

Countywide Household Hazardous & Electronic Waste Management Program

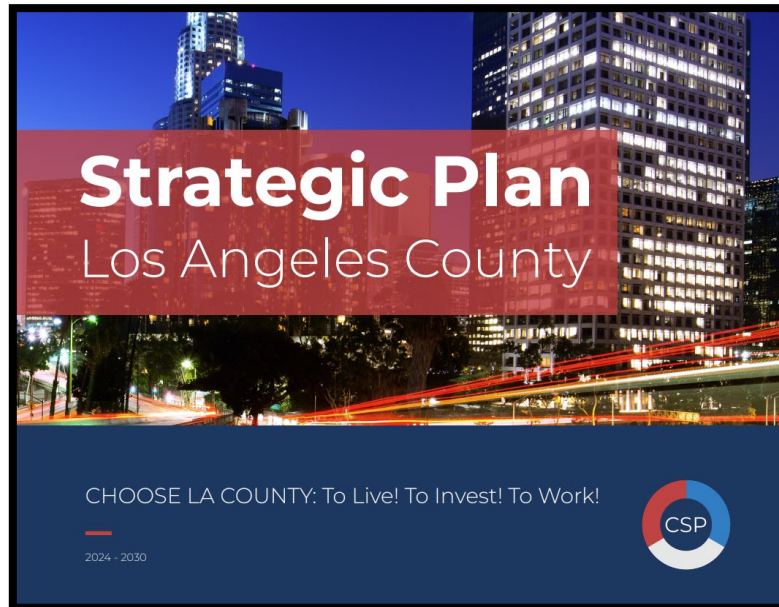
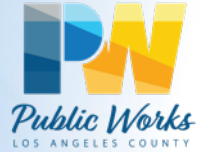


Overview

- Overview & Strategic Alignment
- Collection Events & Participation
- Public Education & Outreach
- Challenges & Long-Term Solutions



Strategic Plan Alignment



County's 2024-2030 Strategic Plan

- Enhances Public Health
- Supports Sustainability
- Promotes Equity

Public Works 2022-2027 Strategic Plan

- Sustainability
- Equity
- Resiliency
- Customer Experience
- Financial Health



Collection Events

Temporary Events

- Throughout LA County

Permanent Centers

- EDCO
- A.V. Environmental Collection Center
- S.A.F.E. Centers
- Reuse Centers

Additional Programs

- Household Batteries
- Sharps Waste
- Used Motor Oil

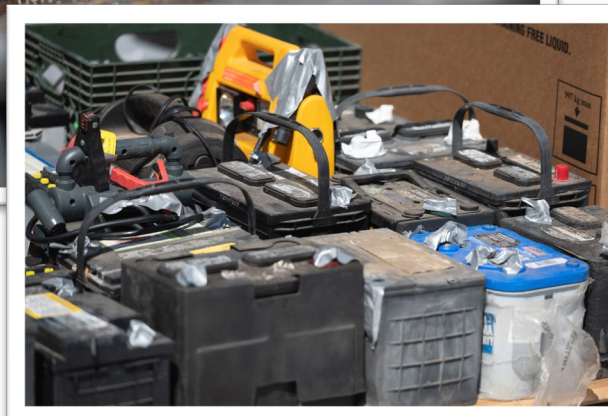


Education & Outreach

- Local Newspaper Ads
- Banners
- Social Media
- Flyers
- Community Based Organizations
- Websites



Challenges



- Fluctuating Participation Rates
- Operating Costs
- Regulatory Requirements
- Coordination with Multiple Agencies & Jurisdictions

Extended Producer Responsibility

- Cost Effectiveness
- Local Actions
- State Legislation
- Next Steps



Thank You

Public Works | HHW/E-Waste Program



pw.lacounty.gov