

HOMELESS POLICY DEPUTIES MEETING AGENDA

MEETING WILL TAKE PLACE IN PERSON WITH A VIRTUAL OPTION

Date: Thursday, March 27, 2025
Time: 2:00 – 4:00 PM
Location: Kenneth Hahn Hall of Administration
500 West Temple St.,
Room 374-A
Los Angeles, CA 90012

For members of the public who wish to join virtually or over the phone, please see below:

Microsoft Teams Link: [Click here to join the meeting](#)

Teleconference Number: +1 323-776-6996,,728455318#

For Spanish interpretation, members of the public should send emails within 48 hours in advance of the meeting to ClusterAccommodationRequest@bos.lacounty.gov

	AGENDA ITEM	LEAD
I.	Welcome and Introductions	Tyler Cash, Fifth District Lilit Bagdzhyan, Fifth District
II.	Pathway Home Update	Carter Hewgley Senior Manager, Homeless Initiative and Affordable Housing
III.	Presentation on People Experiencing Homelessness Mortality	William Nicholas Director, Center for Health Impact Evaluation Los Angeles County Department of Public Health
IV.	Items Recommended for Future Discussion	
V.	Public Comment*	

* Public Comment is limited to one minute. Those joining virtually interested in speaking should raise their hand on Microsoft Teams and unmute once called upon by the Chair. Those on their phones should press *5 to raise their hand and *6 to unmute.

NEXT MEETING: April 10, 2025

March 27, 2025

Homeless Initiative

Pathway Home Update

State of Emergency on Homelessness



Chief
Executive
Office.



County of Los Angeles
Homeless
Initiative

AGENDA

1. Status Update

1. Pathway Home (PWH) Participants
2. Inside Safe Participants (Funded by PWH)
3. Encampment Resolution Fund (ERF) Implementation

2. Partnerships & Coordination

3. Program Improvements

4. Cost Drivers

5. Future Planning

Pathway Home Status Update

Pathway Home Participants

Program Snapshot							
Supervisory District	Interim Housing Sites			Operations		Participants	
	Sites Under Agreement	Sites Under Negotiation	Sites Under Consideration	# of Operations	% Share	Participant Count	% Share
1	4	1	1	5	12%	197	15%
2	5	1	0	18	44%	523	40%
3	1	0	1	2	5%	45	3%
4	6	1	2*	9	22%	269	21%
5	3	0	0	6	15%	259	20%
CEO-HI Approved Placements	N/A	N/A	N/A	1	2%	15	1%
TOTAL	19	3	2	41	100%	1,308	100%

*Two SD4 sites previously used to resolve encampments in SD2 are being considered for closure, which would allow us to open other sites in other communities.

Exit Outcomes			
People Served	Total Exits	Permanent Housing Placements	Average Length of Stay (Days)
1,308	425	265	213

Demographics	
Race/Ethnicity	Percentage Share
American Indian, Alaska Native, or Indigenous	1%
Asian or Asian American	1%
Black, African American, or African	27%
Data not collected	5%
Hispanic/Latina/e/o	41%
Native Hawaiian or Pacific Islander	1%
White	24%
Gender	Percentage Share
Man (Boy, if child)	57%
Woman (Girl, if child)	42%
Transgender or Non-Binary	1%
Age Range	Percentage Share
0-17	1%
18-24	3%
25-49	55%
50-64	31%
65+	10%

Pathway Home Status Update

Inside Safe Participants (Funded by Pathway Home)

Program Snapshot

County-Funded Inside Safe Clients

Supervisory District	Client Count
1	0
2	83
3	36
4	11
5	0
TOTAL	95

Exit Outcomes

People Served	Total Exits	Permanent Housing Placements	Average Length of Stay (Days)
95	51	14	258

Demographics

Race/Ethnicity	Percentage Share
American Indian, Alaska Native, or Indigenous	0%
Asian or Asian American	1%
Black, African American, or African	45%
Hispanic/Latina/e/o	32%
Native Hawaiian or Pacific Islander	0%
White	22%
Gender	Percentage Share
Man (Boy, if child)	68%
Woman (Girl, if Child)	32%
Age Range	Percentage Share
0-17	4%
18-24	3%
25-49	63%
50-64	25%
65+	4%

Pathway Home Status Update

Service Connection Events (SCE)

Completed

- 8/23/23 in Hawthorne (serving people from Inglewood and Unincorporated Lennox)
- 12/13/23 in Lynwood (serving people from Unincorporated East Gardena)
- 12/15/23 in Pomona
- 9/20/23 in Lynwood (serving people from Unincorporated West Rancho Dominguez)
- 1/17/24 in El Monte (serving people evacuated during Tropical Storm Hilary)
- 1/31/24 in Lynwood
- 2/12/24 in Long Beach (serving people from Compton and Long Beach)
- 2/27/24 in Santa Monica
- 3/4/24 in Hawthorne
- 4/4/24 in Long Beach (serving people from Signal Hill and Long Beach)
- 7/3/24 in Monrovia/Duarte
- 9/4/24 in Palmdale
- 11/19/24 in Inglewood
- 12/10/24 in the City of Los Angeles (LA) (serving people from the City of LA and Unincorporated Florence/Firestone)
- 12/11/24 in Lancaster
- 3/24/25 in the City of LA (Regional Event for Pathway Home and Inside Safe)

Planned

- TBD in Unincorporated West Athens
- TBD in Unincorporated Santa Fe Springs
- TBD in Unincorporated East LA

Wildfire Disruption

SCE have been temporarily paused due to the activation of LA County Disaster Recovery Centers. During this pause, CEO-HI conducted surveys with various County departments to assess their capacity to continue serving Pathway Home and Inside Safe clients and meet demands, particularly during this critical time. Some core departments did not currently have capacity to serve both Disaster Recovery Centers and SCE.

Core departments include:

- **Department of Public Social Services (DPSS):** process applications for benefits, emergency services, and other social programs.
- **Registrar-Recorder:** manage vital records services (like birth, death, marriage certificates).
- **Department of Motor Vehicles (DMV):** manage licensing, registration services, and other DMV operations.

Core departments should be able to resume participation in SCE after being released from the recovery centers.

Pathway Home Status Update

Status of ERF-3R Implementation

Application & Award

Timeline

- Application Submitted on 1/31/24
- Award Notification on 4/18/24
- Award received on 1/16/25

Grant Expectations

- \$52M in new funding
- \$16M Leveraged
- 212 Motel Rooms for 475 households and 586 individuals
- 200 Permanent Housing Units
- 180 Housing Navigation Slots
- 58 RVs

Progress to Date

- **8 ERF-Funded Operations Conducted in:**
 - Bellflower
 - Inglewood
 - Norwalk
 - Unincorporated West Athens/Westmont
 - Unincorporated Willowbrook
 - Santa Fe Springs
 - South Gate
 - Los Angeles
- **212 ERF-funded motel rooms** under occupancy agreement
- **253 ERF-funded individuals enrolled** in the Pathway Home Program
- Creating **200 permanent housing slots** to generate program throughput

Pathway Home Status Update

Partnerships & Coordination

Local Jurisdiction Partners

- Bellflower
- Compton
- Culver City
- Downey
- Duarte
- El Monte
- East Los Angeles (UA)
- Florence/Firestone (UA)
- East Gardena (UA)
- Hawthorne
- Inglewood
- Lancaster
- Lennox (UA)
- Long Beach
- Los Angeles
- Lynwood
- Monrovia
- Norwalk
- Palmdale
- Pomona
- Santa Fe Springs
- Santa Monica
- Signal Hill
- South Gate
- West Athens (UA)
- West Rancho Dominguez (UA)
- Willowbrook (UA)
- Westmont (UA)

Interim & Permanent Housing Providers

All providers below have **Housing Navigation** and **Time-Limited Subsidy** contracts through LAHSA.

LAHSA-Contracted Interim Housing:

- People Assisting the Homeless (PATH)
- St Joseph Center
- Union Station Homeless Services

DHS-Contracted Interim Housing:

- Helpline Youth Counseling
- Hope The Mission
- HOPICS
- People Assisting the Homeless (PATH)
- The People Concern
- Volunteers of America
- Whittier First Day
- Shower of Hope

Service Connection Partnerships

- Outreach & Outreach Coordination (ECRC, LAHSA, DHS, LA Metro & LASD)
- Connection to Medical Care & Treatment
 - Managed Care Support (LA Care)
 - Mobile Medical Services (DHS)
- Mental Health Care (DMH)
- Access to Substance Use Disorder Treatment (DPH-SAPC)
- HMIS Program Enrollment (LAHSA)
- Immigration Services (DCBA-OIA)
- Animal Care (DACC)
- Free Cell Phones & Tablets
- Birth Certificate services for LA County born residents (RRCC)
- Record Clearing/Expungement
- Employment Services
- Transportation Assistance
- Benefits Enrollment

Other Key Partnerships

- Command Center & Motel Staging Setup (ISD)
- Debris & Property Removal (DPW)
- Environmental Assessments (DPH)
- Fire Investigation Support (LACoFD)
- Street Cleanup & Repair (DPW)
- Motel Canvassing & Brokerage Support (CEO-RED)
- 19 Motel Partnerships
- Landlord Partnerships
- RV Towing & Dismantling Partnerships
- Food Reimbursement through Southern California Grant Makers

Pathway Home Status Update

Program Improvements

Structural:

- Continuing to **onboard new IH providers** (Helpline Youth Counseling, Whittier First Day, Hope the Mission)
- Converting **all interim housing contracts to DHS-Housing for Health**
- Preparing to **implement the Interim Housing Rate Increase** for our smaller sites
- **Consolidating struggling providers** so they can focus on success at fewer sites
- **Closing sites where we are oversaturated** so we can open sites in other communities

Programmatic:

- Preparing to launch an **Encampment-to-Home version of Pathway Home**
- **Revising the Participant Agreement** to set clearer expectations
- Launched **customized technical assistance and training series** for providers with Iain De Jong and Michele Williams
- Creating a **Pathway Home Community of Practice** for service providers to share best practices
- Conducting **Point-in-Time program assessments** to address challenges and improve program performance
- Implementing new processes to **focus more attention on throughput** to permanent housing
- Executed MOU with DMH to **provide beds to HOME clients** and **improve access to mental health services**

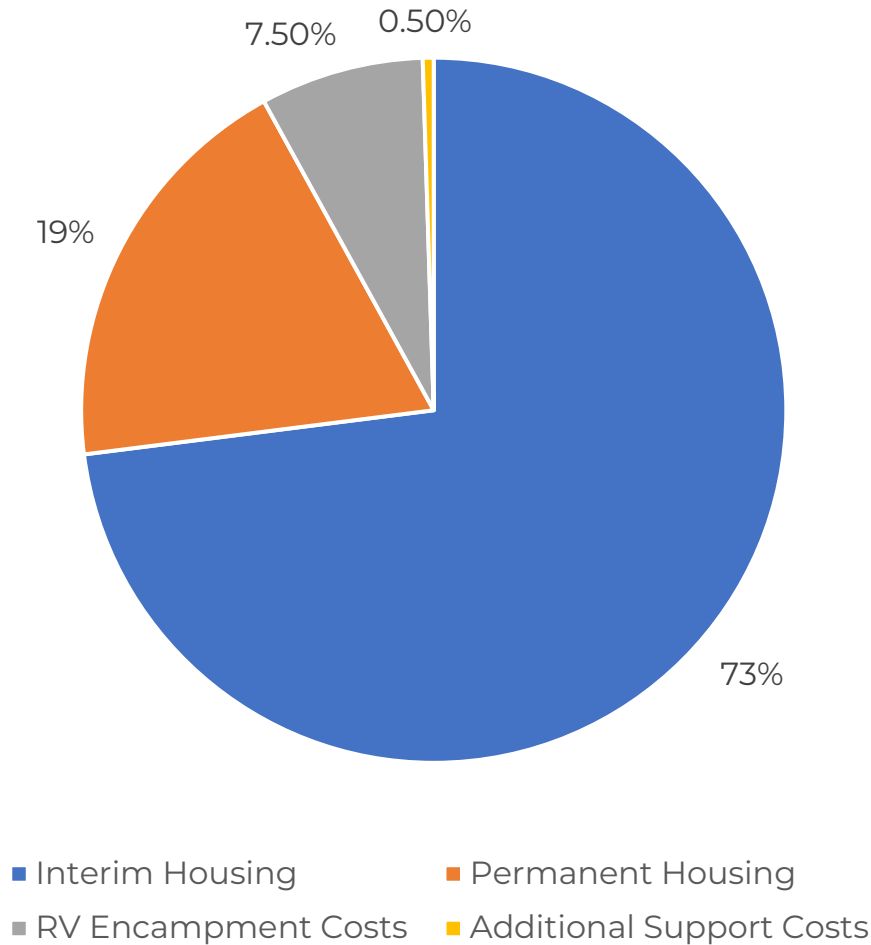
Technical:

- Conducting **quantitative analysis of performance patterns** (e.g., throughput, racial equity, provider variance)
- Providing **Fact Sheets for Local Jurisdiction partners**
- Continuing to **improve how beds, encampments, and participants are tracked** in HMIS
- Improving **coordination with County and local partners** through ECRC

Pathway Home Status Update

Budget Cost Drivers

Pathway Home Budget

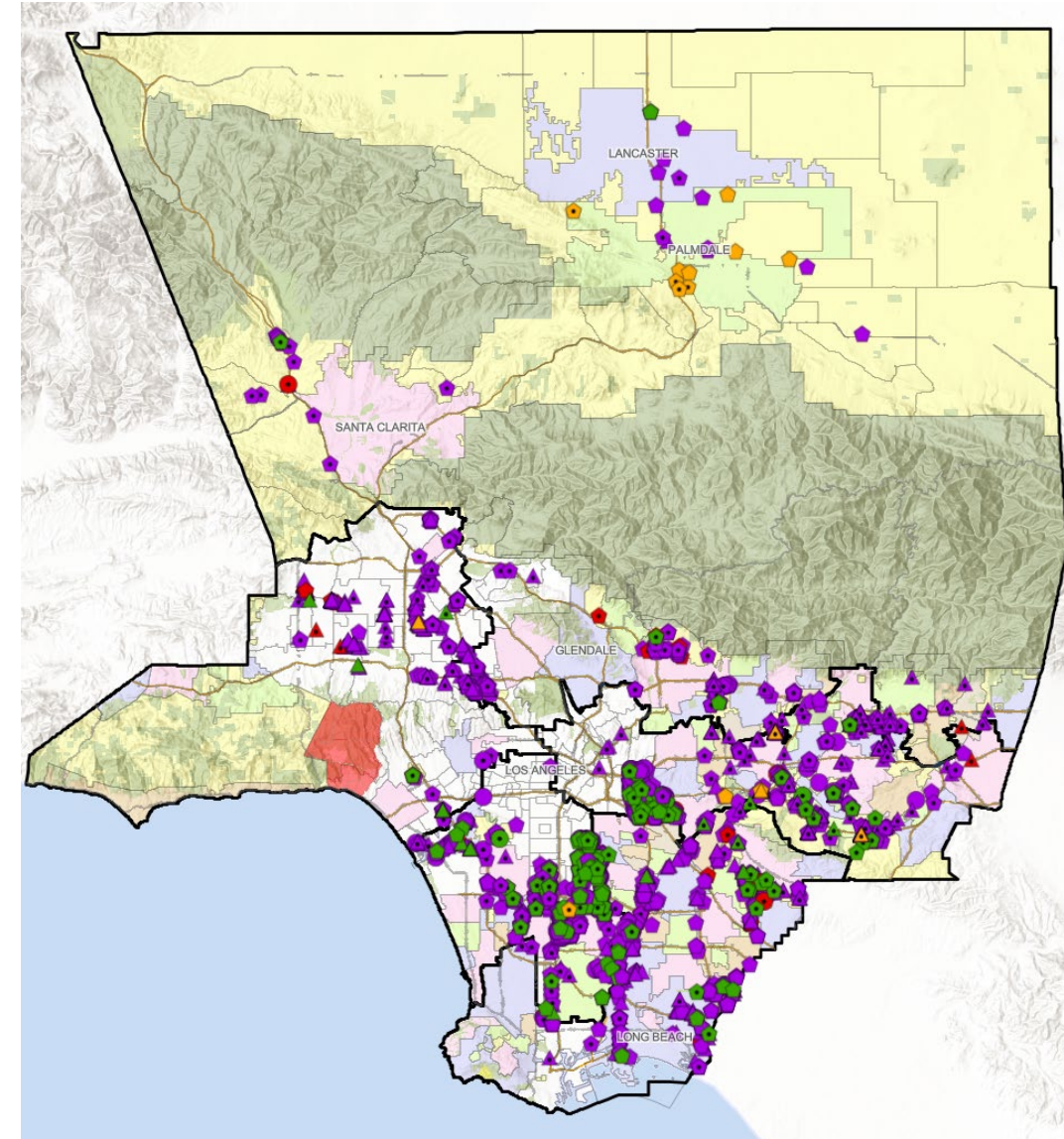


Categories	Cost Drivers
Interim Housing	<ul style="list-style-type: none"> Quantity of Rooms Daily Room Rates Transient Occupancy Taxes (TOT) Damage Mitigation Quantity of Participants Interim Housing Service Rates City of LA Funding Agreement Household Pre-Placement Costs Interim Housing Administrative Fees
Permanent Housing	<ul style="list-style-type: none"> Housing Navigation Slot Quantity Housing Navigation Slot Cost Time-Limited Subsidy Slot Quantity Time-Limited Subsidy Slot Costs Pace of Enrollments & Lease Ups Permanent Housing Administrative Fees
RV Encampment Costs	<ul style="list-style-type: none"> Number of RVs surrendered RV Storage, Pumping, and Safe Parking Costs RV Outreach Support from LAHSA & LASD HOST Debris Removal Costs Environmental Assessment Costs Animal Care Services Costs Fire/Arson Investigation Costs
Additional Supports	<ul style="list-style-type: none"> Motel Canvassing & Brokerage Support Command Center & Motel Staging, and Service Connection Event Setup/Strike Participant Transportation Support Animal Supplies and Services for Non-RV Operations

Pathway Home Status Update

Future Planning (For the remainder of FY 2024-2025)

- 1. House More People:** Increase throughput to permanent housing at our 20 current sites and use vacant units to conduct additional encampment resolutions in the surrounding communities.
- 2. Open New Sites:** Open three additional sites in:
 1. MacArthur Park (finalizing occupancy agreement)
 2. Unincorporated Gardena (finalizing occupancy agreement)
 3. La Puente or San Fernando Valley (whichever comes first)
- 3. Swap Sites:** Close two small sites so we can open one to two others.
- 4. Identify New Funding Streams:** Apply for Encampment Resolution Grant – Round 4 if the State releases a Notice of Funding Availability (NOFA).
- 5. Move People Directly-to-Housing:** Launch an Encampment-to-Home and/or Shelter-to-Home version of Pathway Home so our progress does not depend on the opening of motel-based interim housing.

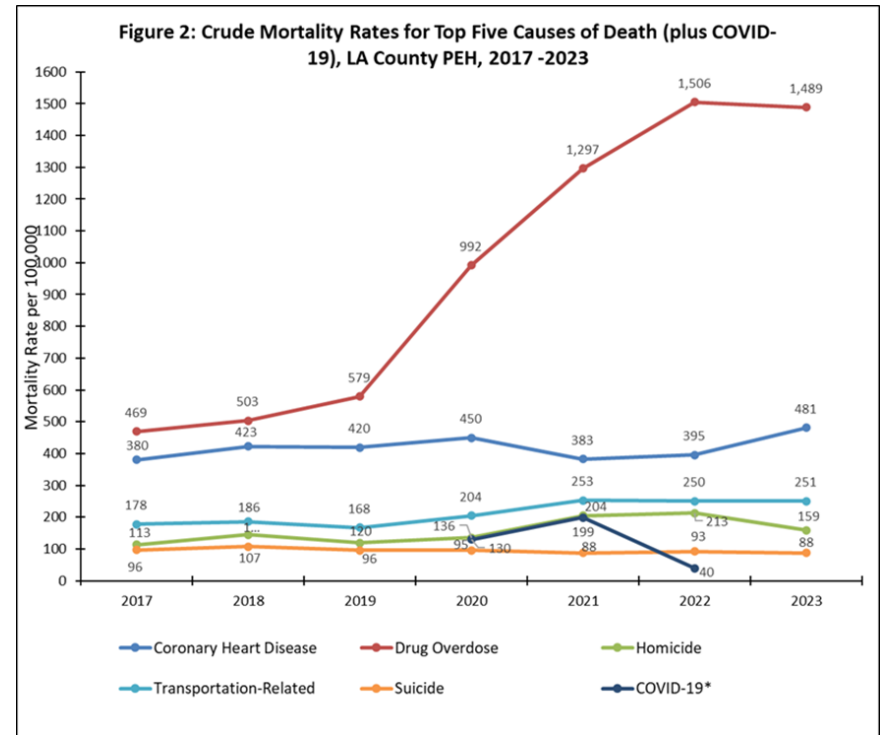
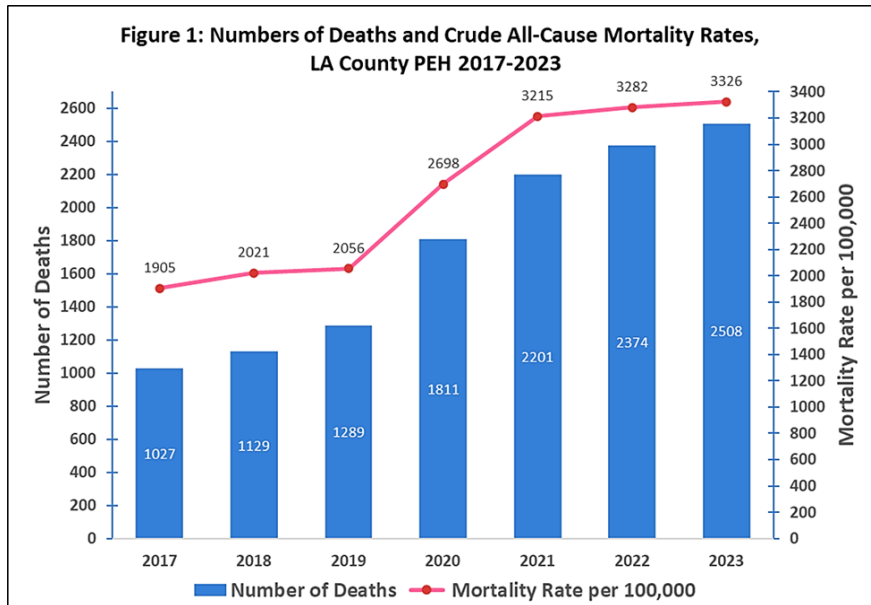


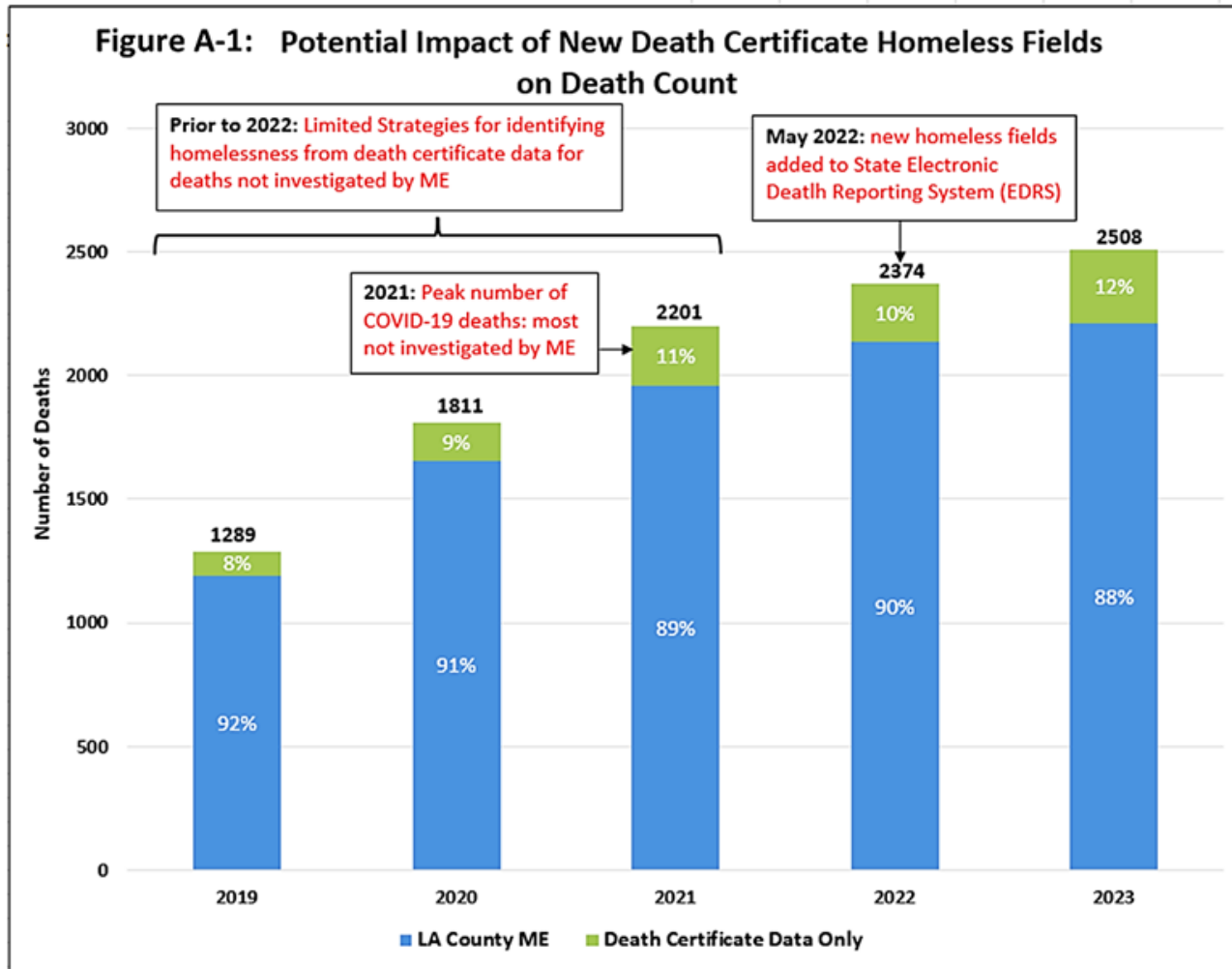


Mortality Rates and Causes of Death among People Experiencing Homelessness in Los Angeles County: 2017-2023

**Homeless Policy Board Deputies Meeting
March 27th, 2025**

**Will Nicholas PhD, MPH
Director, Center for Health Impact Evaluation
Los Angeles County Department of Public Health**





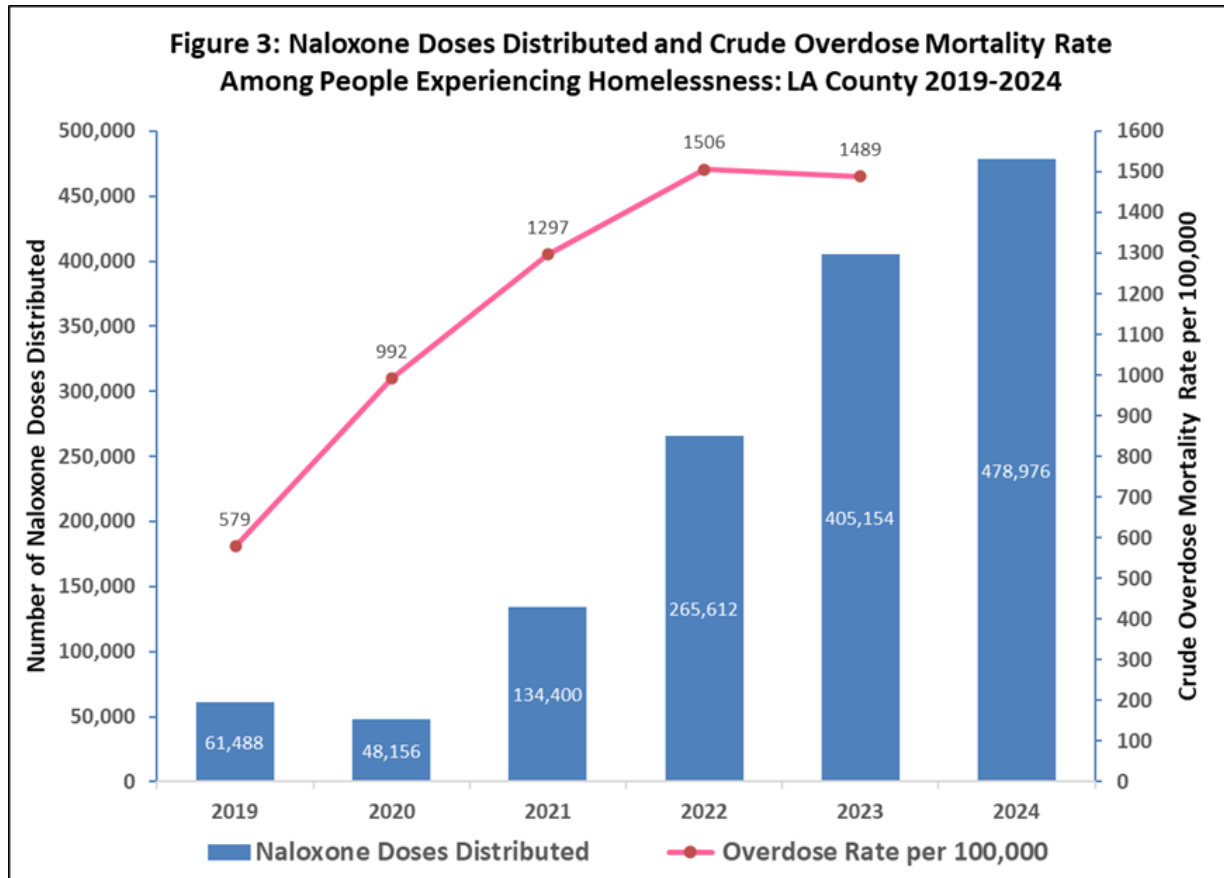


Figure 10: Percentage of Drug Overdose Deaths among PEH Involving Specific Drug Types, 2018-2023

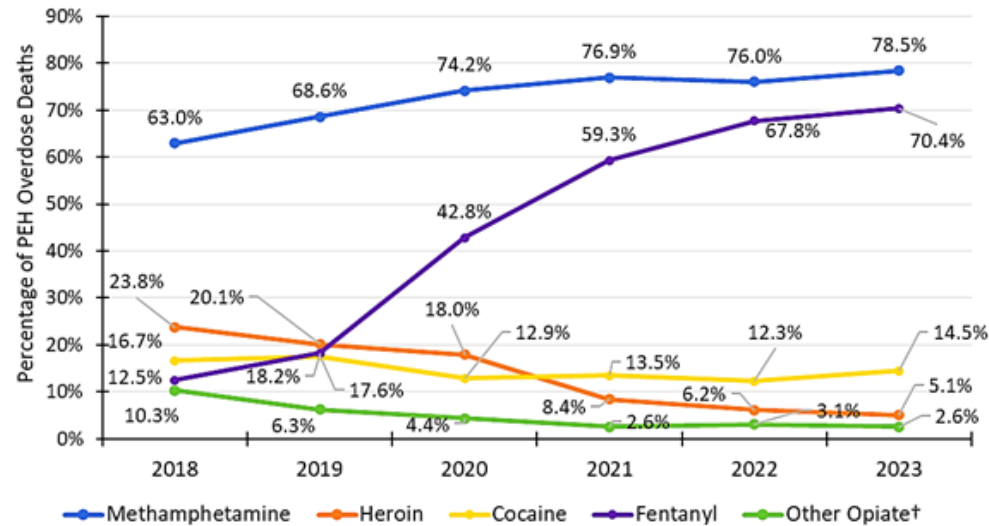


Figure 13: Percentage of Drug Overdose Deaths among PEH for which Specific Drug Types Were the Sole Cause Listed on the Death Certificate, 2018-2023

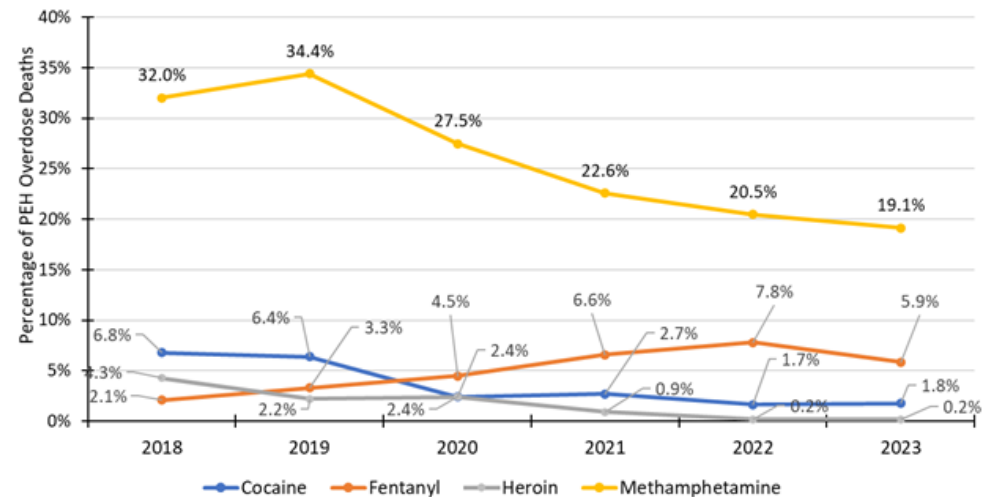


Figure 4: Age-Adjusted All-Cause Mortality Rates, LA County PEH by Race/Ethnicity, 2020-2023

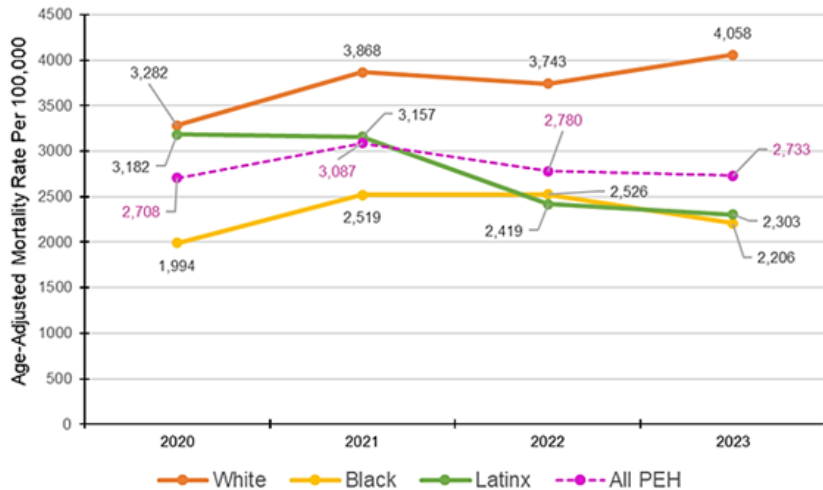


Figure 5: Age-Adjusted Drug Overdose Mortality Rates, LA County PEH by Race/Ethnicity, 2020-2023

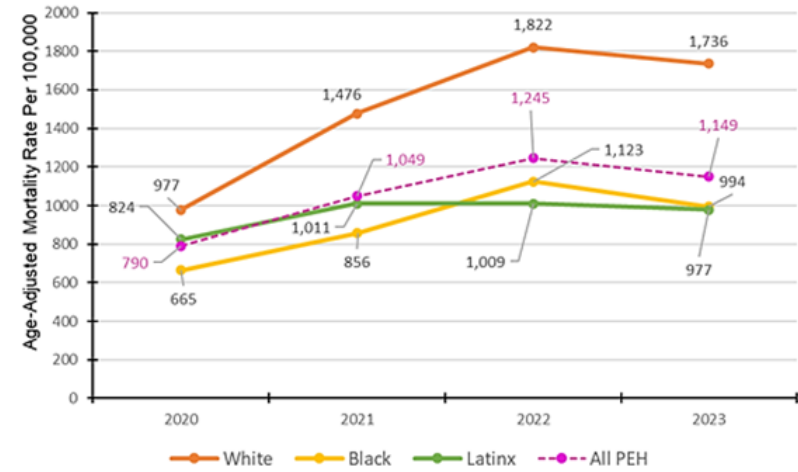


Figure 6: Age-Adjusted Coronary Heart Disease Mortality Rates, LA County PEH by Race/Ethnicity, 2020-2023

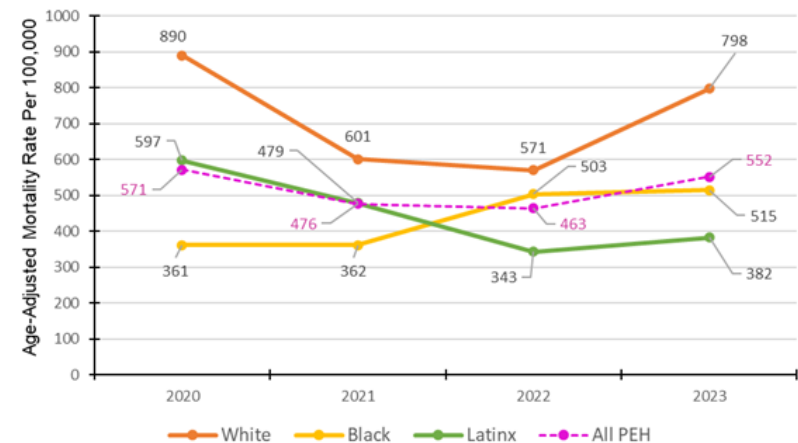


Figure 14: Age and Gender Adjusted All-Cause Mortality Rates, PEH compared to LA County Population, 2020-2023

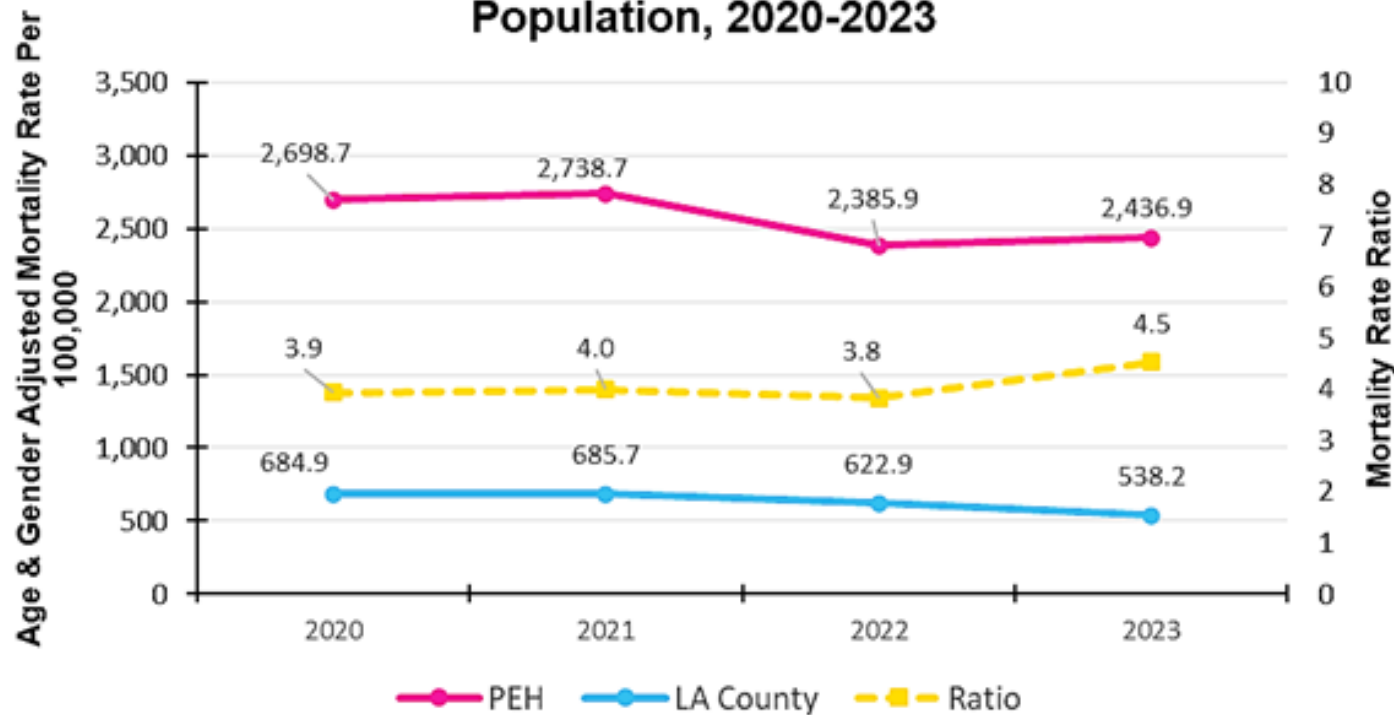


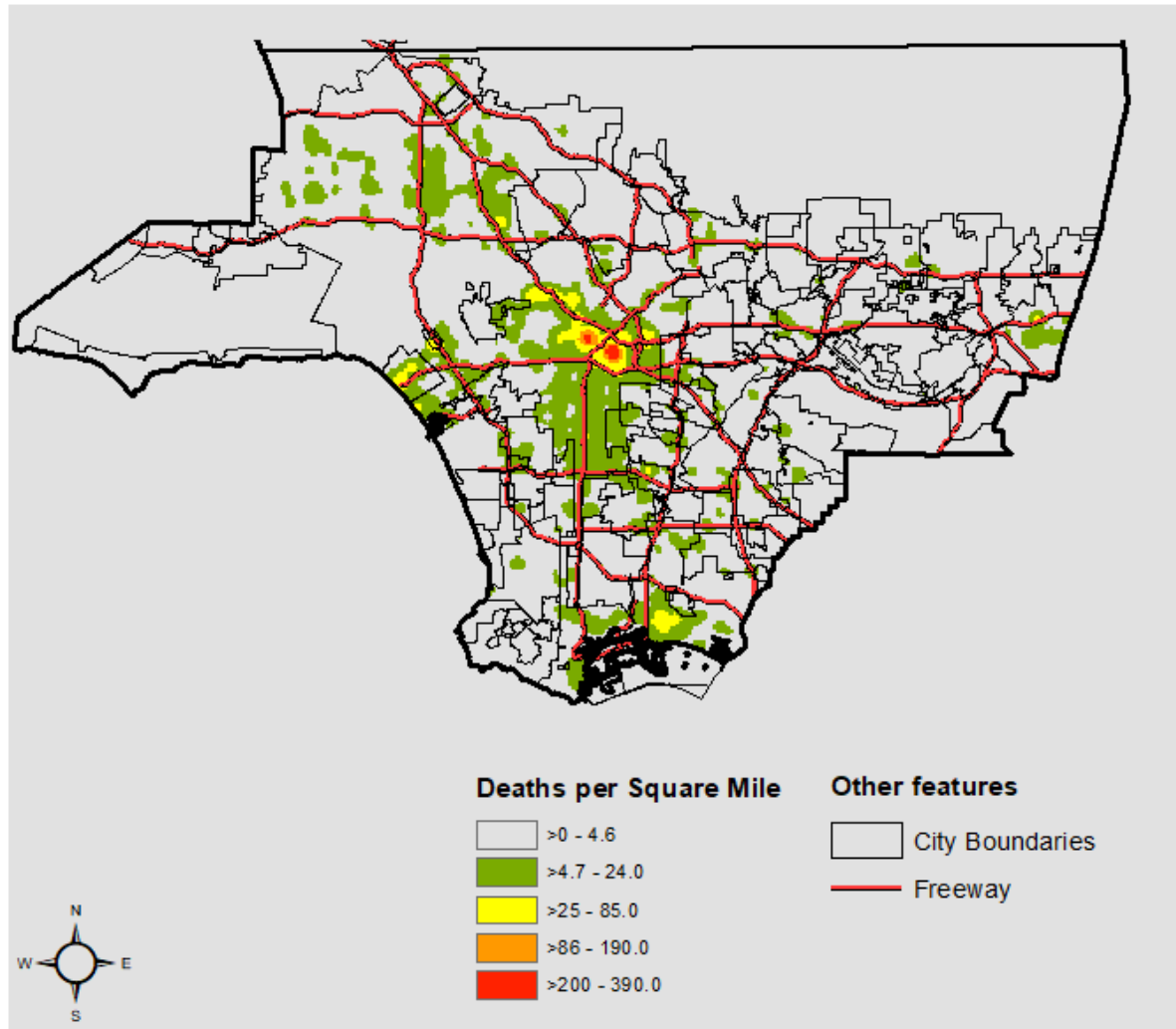


Table 4: Age-Adjusted Mortality Rate Ratios, by Gender and Race and Ethnicity, PEH Compared to LA County Population, 2023

Mortality Rate Ratio				
Gender		Race and Ethnicity*		
Male	Female	Black	Latino	White
4.9	4.0	2.7	4.8	7.0

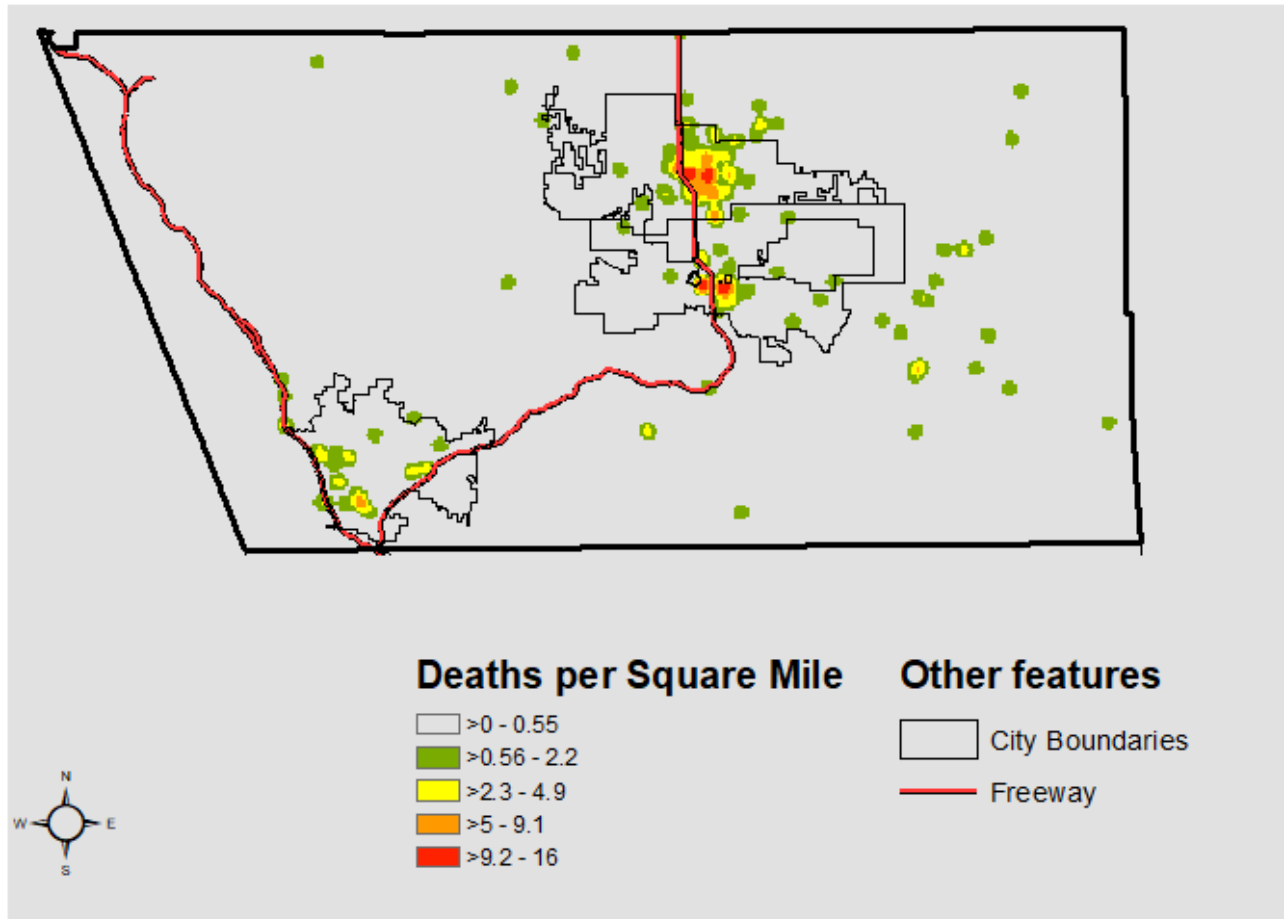
* Estimates for racial and ethnic subgroups could not be adjusted for both age and gender due to data limitations. Other racial and ethnic groups are not included per state vital records data reporting rules.

Heat Map 3: Deaths from All Causes Among PEH, 2022 - 2023 South Los Angeles County (n = 4,031)*



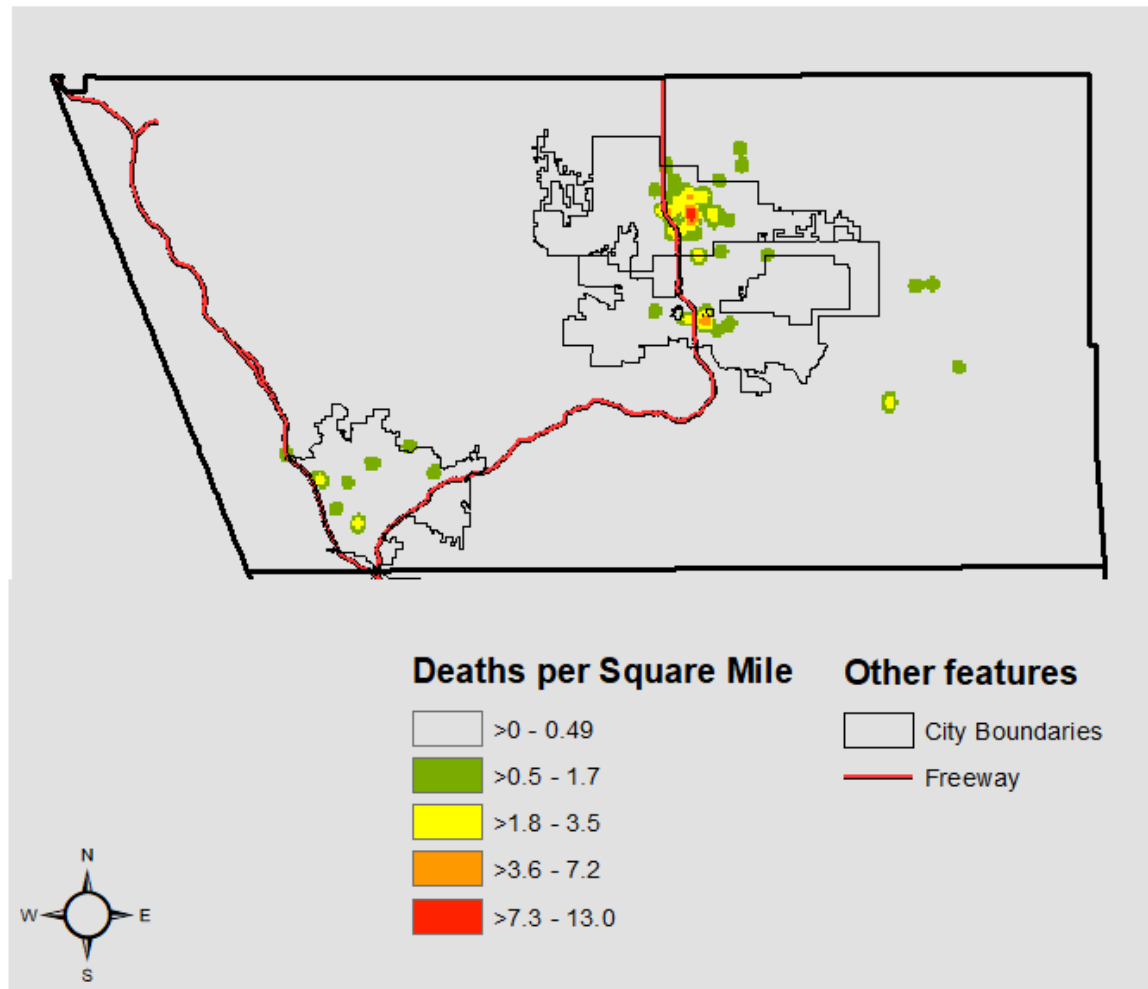
*Out of 4,868 total deaths, 835 were not included in the map because they occurred in hospitals and no event location was available (599) or there was no cause of death information (38)

Heat Map 1: Deaths from All Causes Among PEH, 2022 - 2023 North Los Angeles County (n=195)*



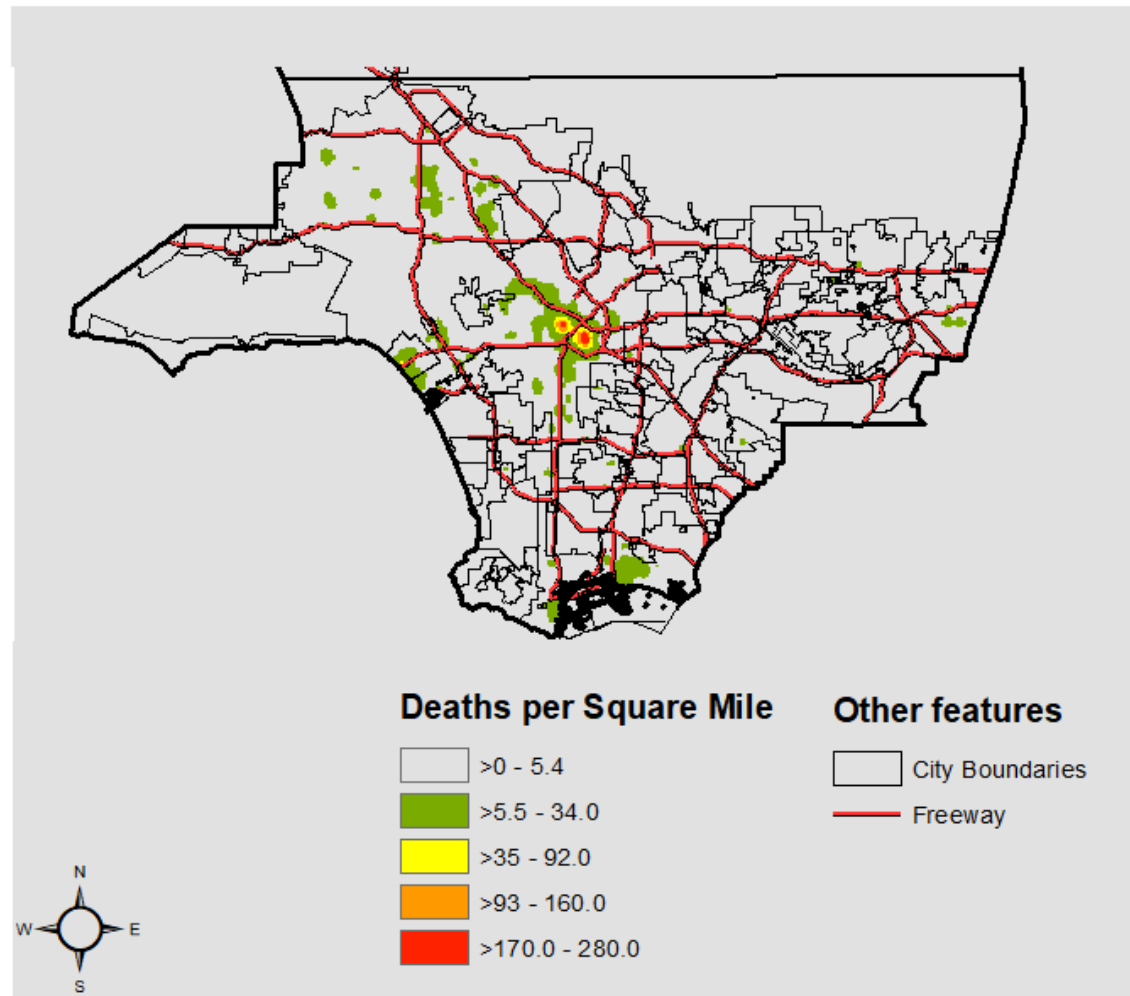
*Out of 216 total deaths, 21 were not included in the map because they occurred in hospitals and no event location was available (19), or there was no cause of death information (2)

Heat Map 2: Overdose Deaths Among PEH, 2022 - 2023 North Los Angeles County (n= 66)*



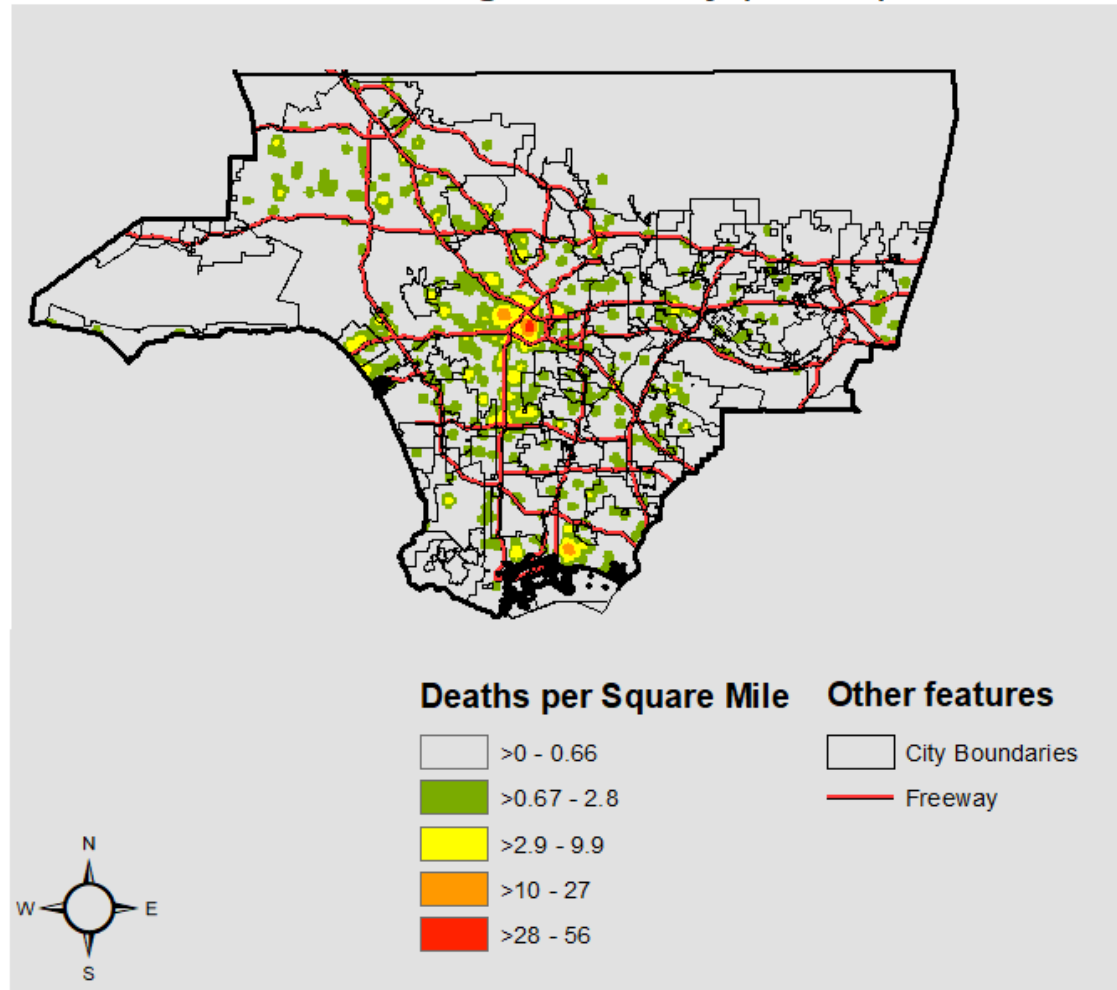
*Out of 73 Overdose deaths, 7 were not included in the map because they occurred in hospitals and no event location was available

Heat Map 4: Overdose Deaths Among PEH, 2022 - 2023 South Los Angeles County (n= 1,930)*



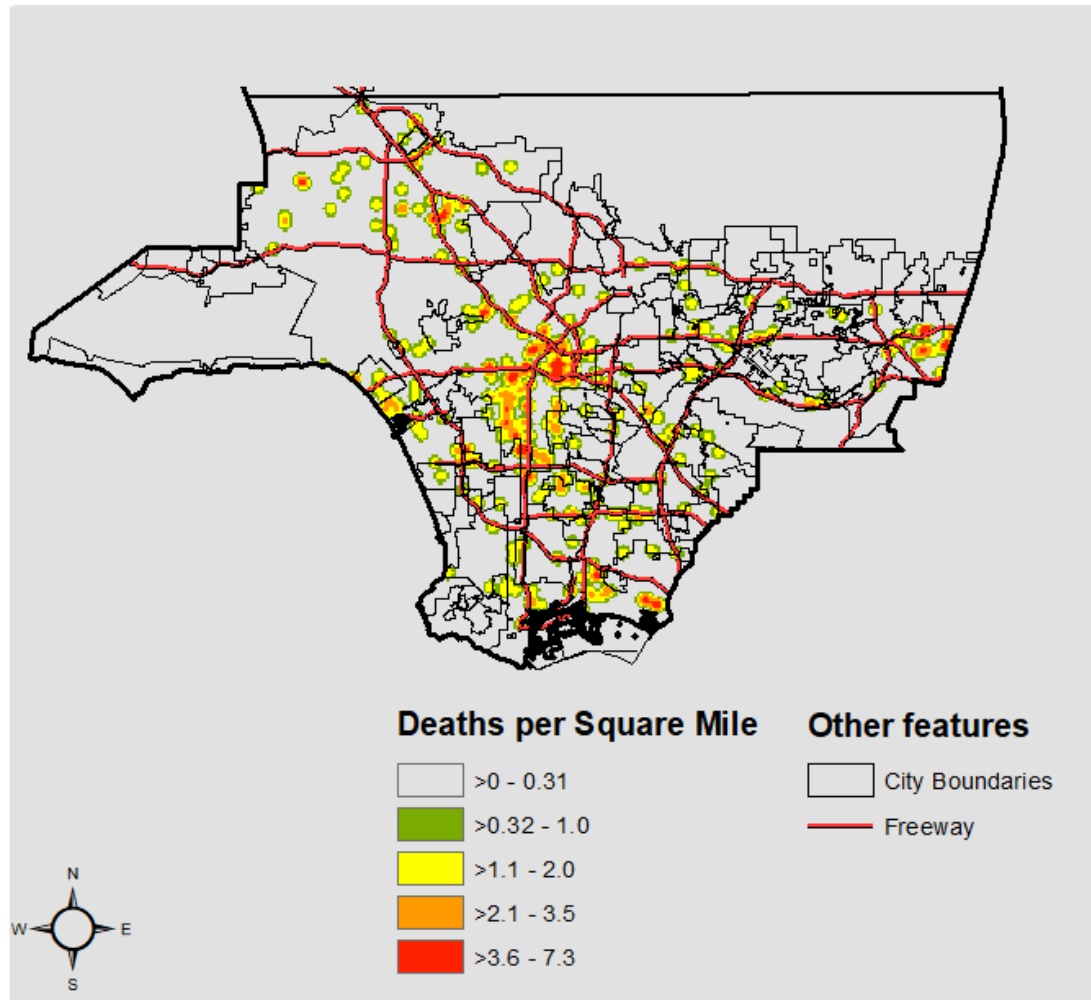
*Out of 2,139 Overdose deaths, 209 were not included in the map because they occurred in hospitals and no event location was available.

Heat Map 5 : Coronary Heart Disease Deaths Among PEH, 2022 - 2023 South Los Angeles County (n= 546)*



*Out of 624 Coronary Heart Disease deaths, 78 were not included in the map because they occurred in hospitals and no event location was available (74), or there was no address (4).

Heat Map 6: Transportation-Related Deaths Among PEH, 2022 - 2023 South Los Angeles County (n= 345)*



*Out of 347 Transportation-Related deaths, 2 were not included in the map because they occurred in hospitals no event location was available.



Recommendations



Rapid and Responsive Access to Housing and Shelter

1. Staff providing outreach and engagement, physical health, mental health, substance use, and social services to PEH are regularly trained on tools to facilitate linkage to housing options.
2. LA County's supply of permanent supportive and interim housing options are sustained, expanded, and aligned with the needs of PEH.
3. The range of housing options is expanded and responsive such that: 1) people who use drugs will not lose their housing due to substance use; 2) recovery-oriented housing is available to residents who benefit from abstinence-focused living environments; and 3) all congregate housing settings have readily available overdose prevention services.



Expanded Harm Reduction and Overdose Prevention Services

4. Advance legislation, regulation and advocacy that make the continuum of substance use prevention, harm reduction, and substance use treatment services more accessible, including safer consumption sites when there is a legal pathway to do so.
5. Sustain and expand harm reduction and overdose prevention service infrastructure for people in jails, hospitals and congregate residential settings, and through street-based outreach and engagement teams.
6. Sustain and expand drop-in spaces, with low barriers to access, where PEH can access harm reduction services, including linkage and referral to substance use treatment and other needed physical and mental health services in a friendly and welcoming environment.



Expanded Harm Reduction and Overdose Prevention Services

7. Sustain and expand telehealth and mobile physical health, mental health, and substance use services to meet the needs of PEH where they reside.
8. Integrate peer-driven/peer-led services to ensure that people with lived experience have a direct role in shaping and delivering services to PEH.
9. Support the development and expansion of outreach and engagement, harm reduction, overdose prevention, and substance use field- and facility-based services for Black, Indigenous, and people of color, and transgender, gender non-conforming, and intersex residents experiencing homelessness.



Access to Responsive Physical Health, Mental Health, and Substance Use Treatment Services

10. Train health care and social service providers to better understand and accommodate the special needs of PEH when making chronic disease management recommendations.
11. Sustain and expand comprehensive primary and preventive care services for PEH with or at risk for coronary heart disease and other chronic conditions, including street medicine programs, mobile clinics, and case management that links clients to needed facility-based medical care.
12. Facilitate PEH access to cardiac testing, medications, procedures, and specialty care, as well as voluntary placement in recuperative care and other supportive interim housing settings to better diagnose or manage cardiac disease.



Access to Responsive Physical Health, Mental Health, and Substance Use Treatment Services

13. Sustain/expand mental health services for PEH, including the full range of outreach and engagement, and community and congregate setting-based services for PEH who may also be experiencing serious mental illness.
14. Sustain/expand LA County's Reaching the 95% (R95) Initiative by removing abstinence as a prerequisite to initiating substance use treatment services, extending the duration of engagement in services, and increasing the presence of community-based outreach and engagement teams for PEH.
15. Sustain/expand access to FDA-approved addiction medication services from all physical health, mental health, and substance use treatment providers in LA County; implement clinically effective medication services where they can be feasibly provided.



16. Ensure best-practices for the implementation of infectious disease protocols are deployed in settings that serve and/or house PEH.

Collaborative Strategies for Reduce Traffic Deaths

17. Collaborate with municipalities and unincorporated communities to identify concentrations of fatal injury collisions involving PEH to inform community planning, and strengthen local infrastructure, programming, and policy interventions that can prevent future traffic deaths.



Questions?

Download Report Here:

<http://publichealth.lacounty.gov/chie/>