

ODR Permanent Steering Committee (PSC)

Quarterly Meeting
December 18, 2024

LAND ACKNOWLEDGEMENT

A Land Acknowledgement is a formal statement that recognizes and respects Indigenous Peoples as traditional stewards of this land and the enduring relationship that exists between Indigenous Peoples and their traditional territories. Developed over many months of collaboration with leaders from local tribes, on November 1, 2022 the Board of Supervisors unanimously voted to adopt a Land Acknowledgement for the County of Los Angeles.

LAND ACKNOWLEDGEMENT

The County of Los Angeles recognizes that we occupy land originally and still inhabited and cared for by the Tongva, Tataviam, Serrano, Kizh, and Chumash Peoples. We honor and pay respect to their elders and descendants past, present, and emerging as they continue their stewardship of these lands and waters. We acknowledge that settler colonization resulted in land seizure, disease, subjugation, slavery, relocation, broken promises, genocide, and multigenerational trauma. This acknowledgement demonstrates our responsibility and commitment to truth, healing and reconciliation and to elevating the stories, culture, and community of the original inhabitants of Los Angeles County. We are grateful to have the opportunity to live and work on these ancestral lands. We are dedicated to growing and sustaining relationships with Native peoples and local tribal governments, including (in no particular order):

- Fernandeno Tataviam Band of Mission Indians
- Gabrielino Tongva Indians of California Tribal Council
- Gabrieleno/Tongva San Gabriel Band of Mission Indians
- Gabrieleno Band of Mission Indians Kizh Nation
- San Manuel Band of Mission Indians
- San Fernando Band of Mission Indians

PSC Agenda / December 18, 2024

1. Welcome and Introductions of PSC membership (including new representatives)
2. Substance Use Disorder Workgroup
3. Updates from Spring ODR Board Presentation (including ODR Site Visits by Judicial and Elected Officers)
4. ODR Lived Experiences Council/Committee and standing representative at PSC
5. Public Comments

PSC Standing Representatives

The PSC has participation and standing representation from:

- Partners in various County roles [Chief Executive Office, Superior Court, Offices/Departments of the Public Defender, Alternative Public Defender, District Attorney, Sheriff, Probation, Fire, Justice Care and Opportunities, Mental Health, Public Health, and Health Services]
- Community Members [Mental Health Service Providers, Mental Health Advocacy Organizations, Community Based Organizations, Peer Services, and those nominated by each Board office]

All of whom gather quarterly to advise ODR leadership on current and future prospective clinical programs and supportive services

PSC Standing Representatives

County Departments	
Los Angeles County Alternate Public Defender (APD)	Julia Dixon
Los Angeles County Board of Supervisors (BOS) - First District/Hilda L. Solis	TBD
Los Angeles County Board of Supervisors (BOS) - Second District/Holly J. Mitchell	Travion Chamberlain, Terrall Tillman (Alternate)
Los Angeles County Board of Supervisors (BOS) - Third District/Lindsey P. Horvath	Karen Goldberg
Los Angeles County Board of Supervisors (BOS) - Fourth District/Janice Hahn	Heidi DeLeon, Sara Rodriguez (Alternate)
Los Angeles County Board of Supervisors (BOS) - Fifth District/Kathryn Barger	TBD
Los Angeles County Chief Executive Officer (CEO)	Maggie Carter
Los Angeles Department of County Counsel	Jennifer Lehman
Los Angeles County Department of District Attorney's Office (DA)	John Niedermann

PSC Standing Representatives

County (con'd)	
County of Los Angeles Fire Department (LACoFD)	Amy Lozano
Los Angeles Department of Health Services (DHS)	Jennifer Hunt
Justice, Care and Opportunities (JCOD)	Yvette Willock
Los Angeles County Sheriff's Department (LASD)	TBD
Los Angeles Department of Mental Health (DMH)	Maria Funk
Los Angeles County Department of Probation	Earl Estell
Los Angeles County Department of Public Defender (PD)	John Alan
Public Health/SAPC	Mandi Bane, Yanira Lima (Alternate)
Los Angeles County Superior Court	Judge Yvette Verastegui or Designee

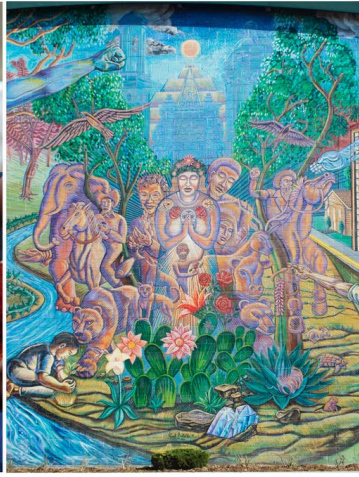
PSC Standing Representatives

Community Partners and Organizations	
ACLU	
Christ Centered Ministries	
City Attorney's Association	
Exodus Recovery	
LA City	
LARRP	
LA Mission	
Los Angeles City Attorney's Office	
Mental Health Advocacy Group (NAMI)	
Project 180	

ODR Lived Experiences Council

As discussed in the September PSC meeting, the establishment of Community Programs Lived Experiences Council/Committee is a priority for leadership:

- Create systems and conversations which stomp out stigma
- Engage with one another with authentic communications and transparency
- Work to build trust among county and community partners
- Provide leadership with recommendations to incorporate lived experience into job exam language and pathway to employment
- Collaborate and co-create: conceptual design, authorship, implementation and outcomes



COMMUNITY PROGRAMS
Lived Experience Boards

We are
Community
Programs.



Housing for Health staff and patients out in the community.

Community Programs at the Department of Health Services supports a range of programs that provide healthcare services and resources to specific focus demographics across Los Angeles County.

HOUSING
FOR
HEALTH

OFFICE OF DIVERSION
AND REENTRY





GOAL: Community Programs will:

- Create 2 committees comprised of people with lived experience in homelessness and/or the justice system who are receiving or have received services from HFH and ODR.
- One board will be for ODR and one for HFH.
- The Lived Experience Boards will collaborate closely with leadership, staff members and contracted community providers.

STAKEHOLDER ENGAGEMENT



1 Executive Leadership

2 Senior
Leadership

3 Frontline
Staff

4 Community
Partners

To inform the development of the Lived Experience Boards Proposal for HFH and ODR.

- 6 listening Sessions were conducted in 2023.
- 8 in-depth interviews with community partners who organize lived experience boards.

Project Funding and Deliverables

\$240,000 for 18 months

- **Primarily support staffing, stipends and basic program expenses**



Some deliverables include:

- Outreach and recruit 8-10 HFH and ODR service recipients with lived experience to comprise the committee and serve for two years.
- Establish a co-design process on charter, plans, objectives.
- Support leadership development and capacity building.
- Engage stakeholders, both within government and community. Create cross-sector partnerships.

OBJECTIVES

The program manager will ensure consistent communication and collaboration to meet the following objectives:

- 1) To engage and collaborate with people who have lived experience in homelessness in order to achieve HFH's mission: Improving the health, dignity and wellbeing of the most vulnerable Los Angeles County residents experiencing homelessness or housing instability through providing integrated housing, social services, benefits advocacy, physical and behavioral healthcare.
- 2) To demonstrate the efficacy of public agencies partnering with people with lived experience of homelessness to support people ending their experience of homelessness, and
- 3) To share decision-making on: a) identifying gaps; b) designing, implementing and refining public programs; and c) improving service delivery overall.





Program Manager Hiring & Recruitment

The Community Engagement Program Manager –Staff Analyst -- will be responsible for the development, including recruitment and retention, and management of two lived experience committees, one for HFH and one for ODR.

- **Management and Recruitment of the Committees**
- **Program and Grant Management**
- **Collaboration and Evaluation**



COMMUNITY ENGAGEMENT TIMELINE 2025

JAN - MAR

APR - JUNE

JULY - SEPT.

OCT - DEC



FIRST QUARTER

- Hiring and Recruitment
- Meeting with Leadership and Community Partners
- Engage Workforce members
- Outreach and Recruitments


SECOND QUARTER

- Select Committee members
- Start Kick-Off Meetings
- Survey committee members

THIRD QUARTER

- Identify priorities for all committee projects
- Attend specific workgroup meetings
- Report back to stakeholders

FOURTH QUARTER

- Evaluate Program
 - Engage workforce and leadership
 - Identify bright spots and challenges
- 

THANK YOU FOR YOUR TIME & ENGAGEMENT

For more info contact:

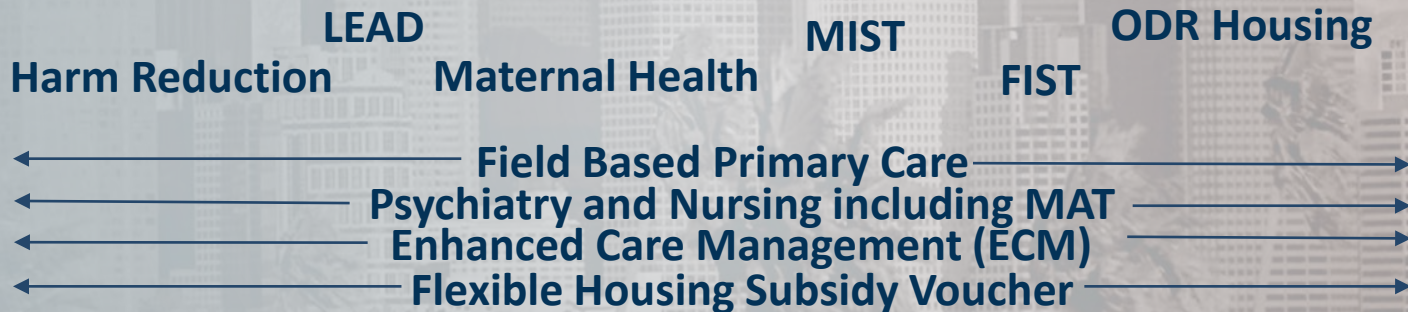
Angel J Martinez

ajmartinez@dhs.county.gov

Anna Gorman

agorman@dhs.lacounty.gov

ODR supports individuals across the entire Sequential Intercept Model (SIM). By addressing the holistic needs of individuals (including their complex underlying physical and behavioral health and social concerns), we create a lifelong continuum of health focused care, housing, and social connections to support ODR members in their community with the help of the community...



ODR Public Discussion

A place and space for conversation and dialogue

2025 Meeting Schedule for the ODR Permanent Steering Committee

*Date	Time	Room	Location
3/19/2025	3:00 p.m.	Virtual via MS Teams and/or in-person	Virtual via MS Teams and/or in-person
6/18/2025	3:00 p.m.	Virtual via MS Teams and/or in-person	Virtual via MS Teams and/or in-person
9/18/2025	3:00 p.m.	Virtual via MS Teams and/or in-person	Virtual via MS Teams and/or in-person
12/18/2025	3:00 p.m.	Virtual via MS Teams and/or in-person	Virtual via MS Teams and/or in-person

*Held quarterly on the third Wednesday

**Thank you for being here today AND being a member of the ODR PSC!
Next meeting: 2025!**

ODR Website / QR

<https://dhs.lacounty.gov/office-of-diversion-and-reentry/our-services/office-of-diversion-and-reentry/>



Thank you for being here today AND being a member of the ODR PSC!
Next meeting: 2025!