

Summer Stars
Tutoring Pilot 2024





Summer Stars Timeline

- 2018 - Reading STARS, a school-year tutoring program offered
- September 2022 LA County Library Community Visioning Sessions held
- September 2023 10-location Summer Tutoring proposal presented to SD4
- October 2023 BOS Tutoring Board Motion program expand to 36 locations
- November 2023 2.9 Million ARP funding allocated for Summer Stars
- February 2024 DEO and Library meet
- February 2024 – July 2024 – 85 Youth Worker candidates identified and processed for placement to support Summer Stars at library locations.
- June 2024 – August 2024 – Summer Stars

LA County Department of Economic Opportunity Youth@Work Summer Stars Program

October 23, 2024

NOW RECRUITING FOR YOUTH@WORK SUMMER STARS

AT PARTICIPATING LA COUNTY LIBRARIES LOCATIONS

Work alongside credentialed educators in delivering tutoring services to school-age students during the summer break.



1PM-5PM
MON-FRI



JUNE 10TH -
AUGUST 9TH, 2024

QUALIFICATION

- LA County Residents ages 14-24
- Must have legal right to work
- Must be available June 10-August 9, 2024 Monday through Friday from 1pm-5pm



<https://bit.ly/3vZOJsv>



Youth@Work Program Model

Program Description

The Youth@Work program offers 160 hours of paid soft skills training and work experience, serving TAY from low-income or CalWORKs households, foster youth, system-impacted, justice-impacted, and LGBTQ youth

The program offers paid work experience to youth facing barriers, promoting career exposure in County and private sectors

It aims to alleviate poverty and enhance social mobility while supporting educational and employment outcomes for young adults.

Objective

Youth@Work Summer Stars enrolled participants to engage youth during the summer months to continue professional skills development while supporting their communities by assisting Library's Summer Stars tutoring program

Youth@Work Summer Stars By the Numbers

Recruitment

April 25, 2024

683 Interest forms received within the month-long recruitment period

Over 101 interviews completed by Library Managers

88 LiveScans completed

85 youth placed at 46 Libraries

Supervisor District

1:
30

Supervisor District

2:
26

Supervisor District

3:
3

Supervisor District

4:
22

Supervisor District

5:
4

DEPARTMENT OF ECONOMIC OPPORTUNITY

Summer Stars Impact

85

YOUTH@WORK
PARTICIPANTS PLACED

11,285

WORK EXPERIENCE
HOURS

131

AVERAGE HOURS
WORKED

\$192,819

PARTICIPANT
WAGES

\$337,203

TOTAL
INVESTMENT

Program Testimonial

Participants gained confidence and personal growth from working with local children, with many eager to participate again next year.

Library staff noted that Youth@Work participants enriched the program and were motivated and helpful in its implementation.

DEO and Library Partnership

As a result of the Summer Stars project and other library placements, Public Library is now Youth@Work's second-largest county partner, hosting 106 out of 708 total participants placed in County departments for PY 2023-24.

71 participants obtained the Countywide Youth Bridges Program Certificate of Completion, qualifying them for a 12-month paid internship with the County of Los Angeles.

Recruitment for next year's Youth@Work Summer Stars program will begin March 2025

An extended recruitment period will allow for increased applicant pools to ensure maximized library worksite placement

Thank you

For more information email us at
youthatwork@opportunity.lacounty.gov



Summer Stars Tutoring Pilot

PREParations

StudentNest

- Contracted to provide Tutors
- Created Curriculum and Engagement Activities

LA County School District Partners

- Lawndale Unified School District
- Mountain View School District
- Keppel Union School District

LA Library Program Preparations

- Procurement program materials and supplies
- Marketing, Promotions & Registrations
- Staff Training



Program Outcomes & Activities

- 3,123 Online Interest forms submitted
- 4,289 Students enrolled
- 2,711 Individual students attended at least one tutoring appointment
- 13,789 Tutoring appointments attended
- 1,574 Student Resource Kits created
- 943 Student Resource Kits distributed



Program Outcomes & Activities

- 85 Youth at Work participant placements at 46 library locations
- 11,000 hours worked by Youth@Work participants



Enrollments

Interest Forms Submitted by Session



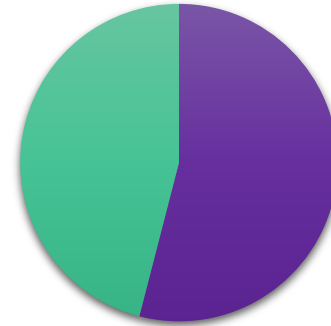
- Reading Session: 499
- Math Session: 657
- Both Sessions: 1,967

Enrollment by Session



- Reading Session: 1,654
- Math Session: 1,601
- Both Sessions: 1,034

Enrollment by Grade



- Grades 1-3: 2,317
- Grades 4-6: 1,972

Attendance

Unique Student Participants



■ Reading: 1,367
■ Math: 1,344
■ Both: 588

Tutoring Appointments Attended



■ Reading: 6,173
■ Math: 7,616

Attendance

Reading				
	# of Libraries	# of Students Enrolled	# of Attendees	Attended at least once %
SD1	17	470	322	69%
SD2	13	453	299	66%
SD3	2	62	39	63%
SD4	12	90	60	67%
SD5	2	64	40	63%

Math				
	# of Libraries	# of Students Enrolled	# of Attendees	Attended at least once %
SD1	17	463	342	74%
SD2	13	453	314	69%
SD3	2	52	41	79%
SD4	12	78	47	60%
SD5	2	67	41	61%

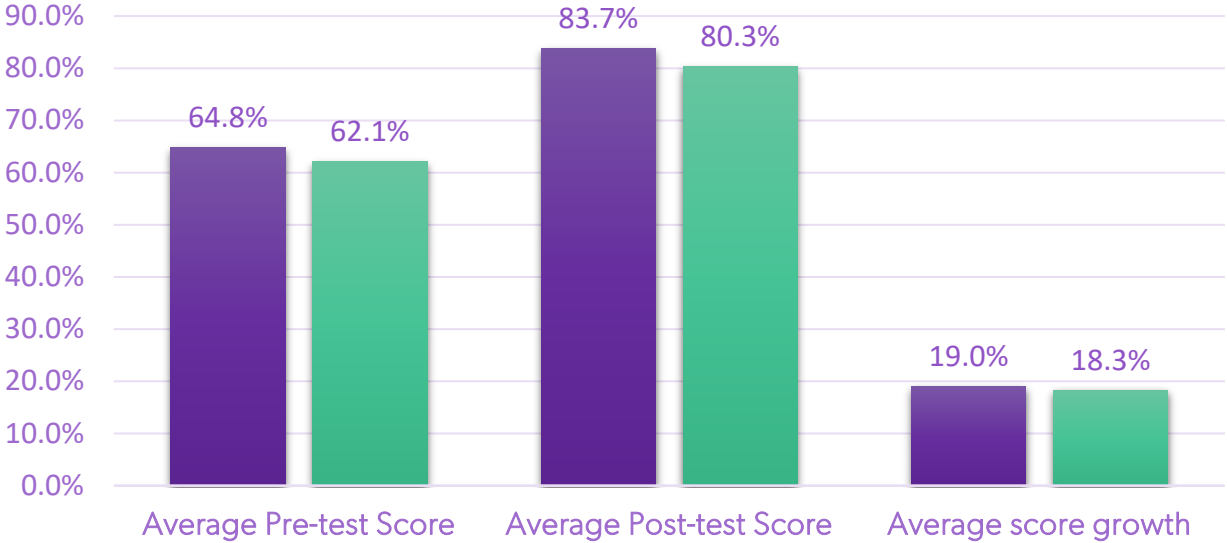
Assessment Scores

Reading Pre-Tests: 1,040

Reading Post-Tests: 717

Math Pre-Tests: 1,012

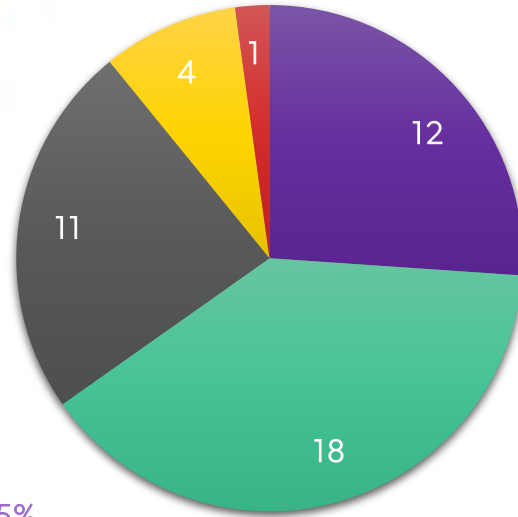
Math Post-Tests: 701



■ Reading Session ■ Math Session

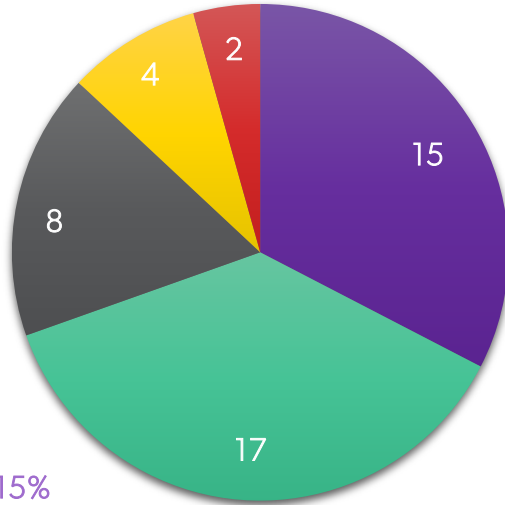


Average Score Growth: Reading Session



- Score Growth between 10-15%
- Score Growth between 15.01-20%
- Score Growth between 20.01-25%
- Score Growth between 25.01-30%
- Score Growth between 30.01-35%

Average Score Growth: Math Session



- Score Growth between 10-15%
- Score Growth between 15.01-20%
- Score Growth between 20.01-25%
- Score Growth between 25.01-30%
- Score Growth between 30.01-35%

Community Feedback

386 survey responses received



■ Reading: 12 ■ Math: 192 ■ Both: 182



Community Feedback: Highlights

- 91% saw improvement in student reading skills after participating in the program
- 93% saw improvement in student math skills after participating in the program
- 94% saw improvement in student confidence with reading and/or math
- 77% noticed an increase in student independent reading time since participating in Summer Stars



Community Feedback: Requests

- School-year tutoring program (27)
- Longer tutoring appointments (26)
- 2 days of tutoring with longer appointments (5)
- Evening or weekend tutoring appointments (9)
- Tutoring locations outside of LA County Library service area (5)
- Communication and scheduling challenges (4)
- Lack of engaged tutors (14)
 - 2 mentions of short tutoring sessions



Community Feedback: Comments

“Loved this resource in our community, which is historically underserved. The tutors were great and my son feels confident transitioning into 6th grade. Tutoring resources are expensive! Was also glad to have something in my neighborhood for once and not have to get resources elsewhere. This fit nicely into our routine and looked forward to each session. Keep this at the Florence lib(rary)!” – from a Florence customer



Next Steps

School-year tutoring program – January – May 2025

- 17-week tutoring program
- 30 library locations
- Place 30 Youth Workers to support the program
- Afternoon and evening 1-hour weekly tutoring appointments

Summer Stars 2025 – June – August 2025

- 8-week program
- Reading and Math Sessions
- 45 library locations
- Place 90 Youth Workers to support the program

Thank You and Questions (?)

Heather Firchow | hfirchow@library.lacounty.gov





2022 Los Angeles Countywide Parks Needs Assessment Plus (PNA+): Implementation Update

Cluster Meeting
October 2024





PNA+ Implementation

A groundbreaking plan that presents a new land conservation paradigm, prioritizing proactive land restoration in vulnerable communities facing concentrated environmental burdens to address environmental justice, climate change, biodiversity, and park land equity.

30x30: Conserve 30% of Lands and Waters by 2030

More than 190 countries sign landmark agreement to halt the biodiversity crisis

By Laurel Peckham, CNN
Updated 6:29 AM EDT, Mon December 30, 2022
f t e



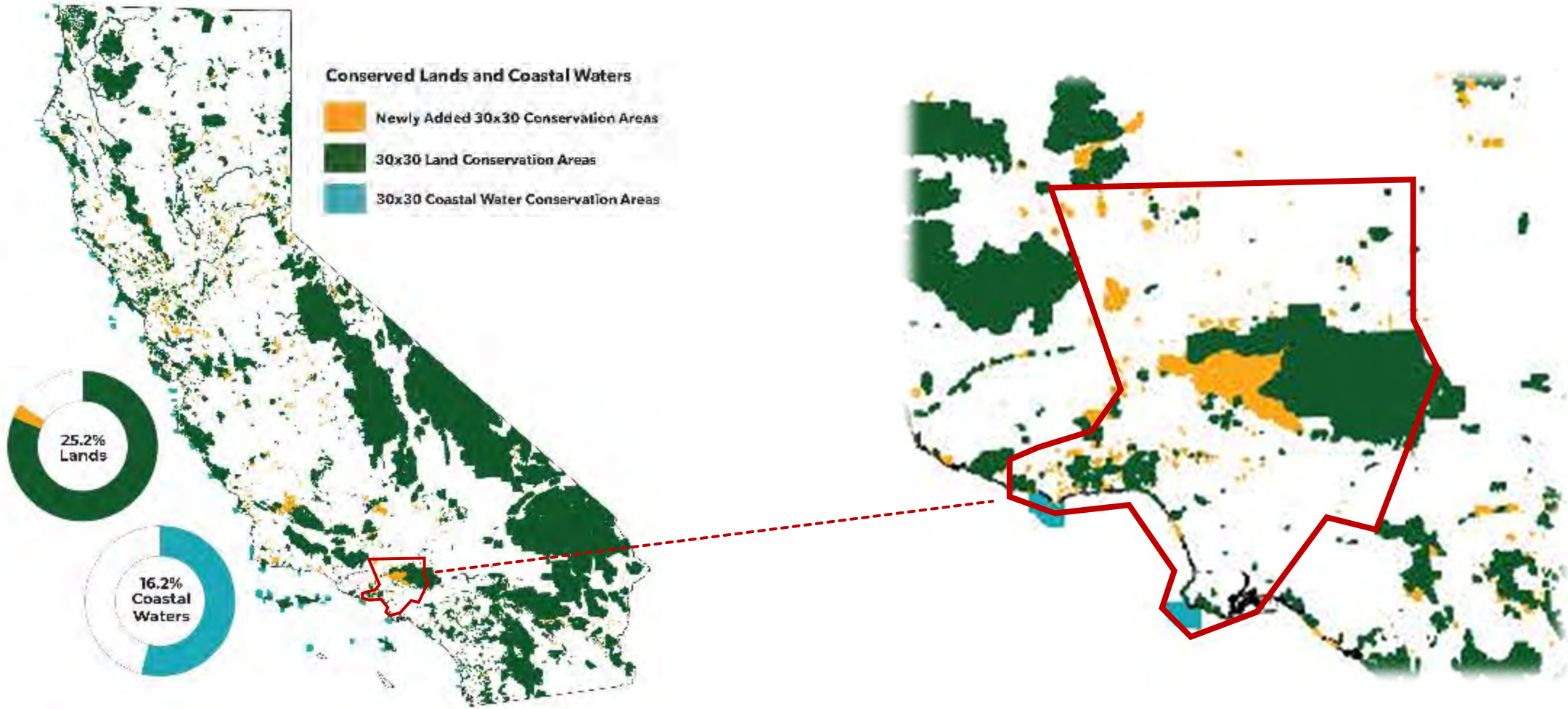
The UN's COP15 biodiversity summit was held at the Palais de Congrès in Montreal.

Biden's commitment to conserve 30 percent of U.S. land by 2030 will require a huge increase in protected areas.

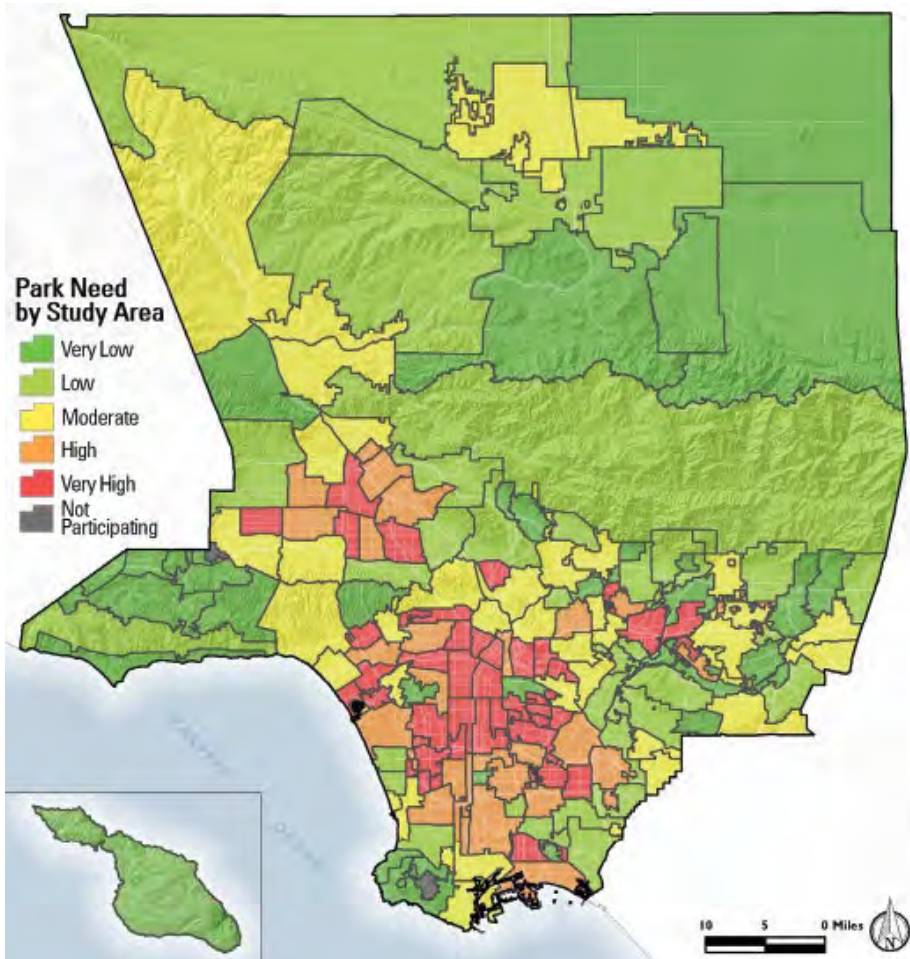
Only 12 percent of total U.S. area has sufficient protections to meet the 30 by 30 conservation goal.



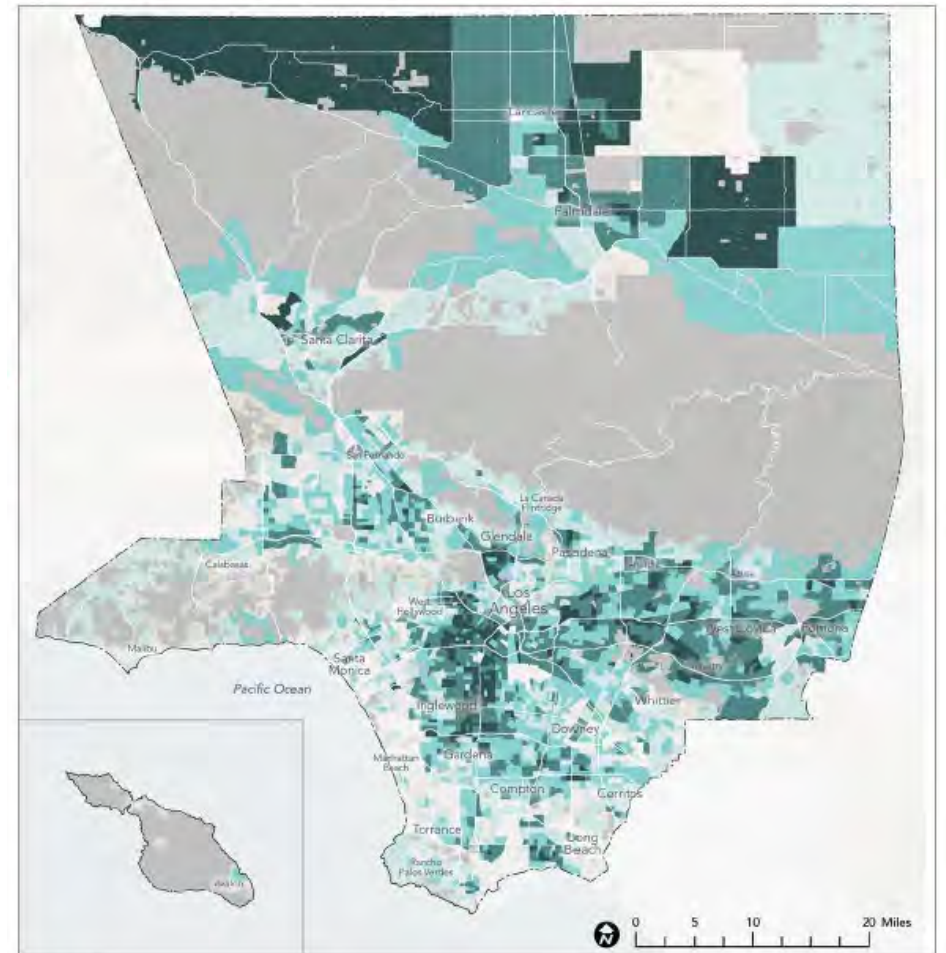
30x30 Two-Year Progress



Prioritize the Most Vulnerable

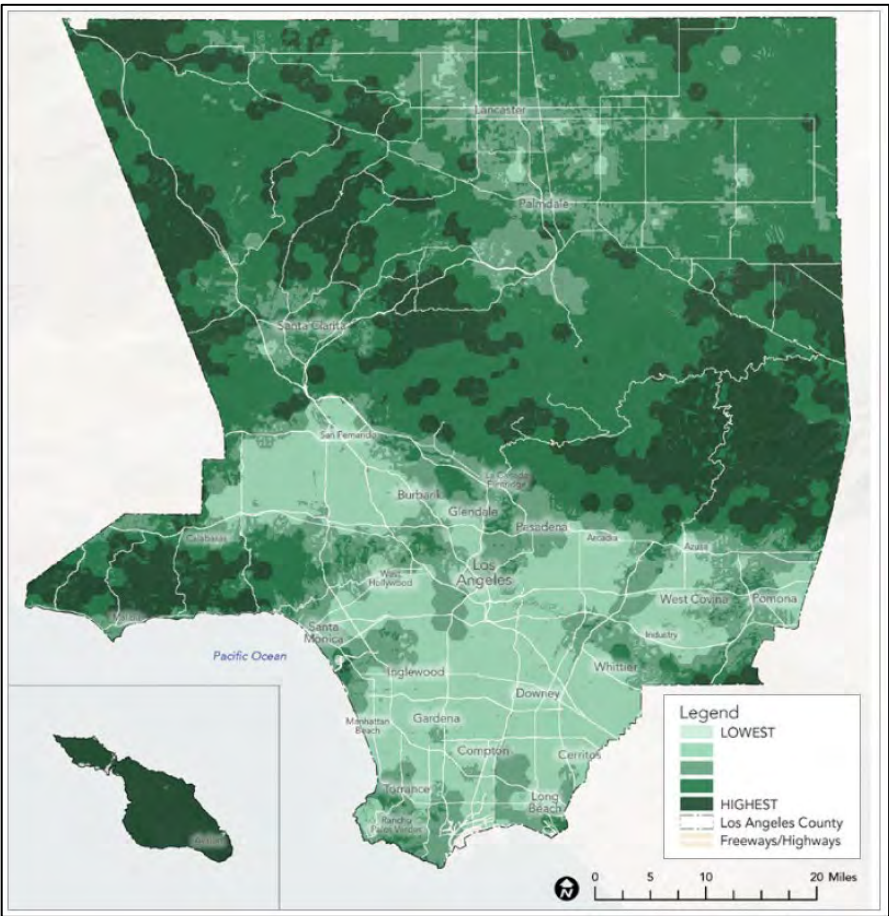


2016 PARK NEED LEVEL

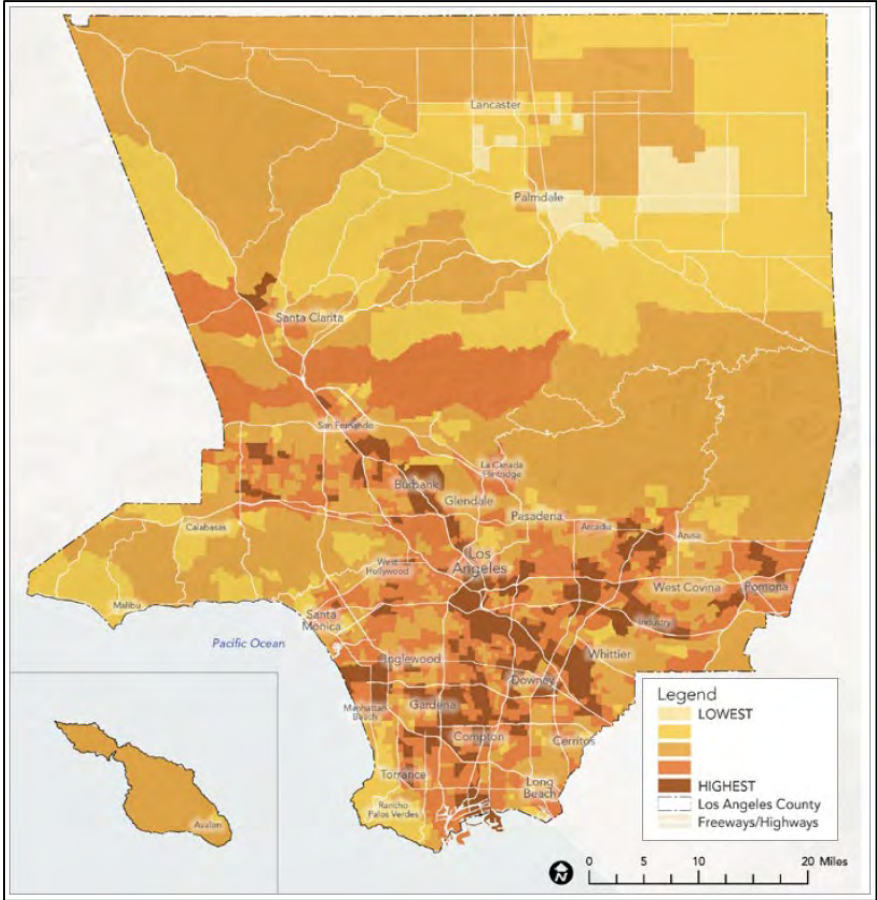


2022 POPULATION VULNERABILITY

Conserve and Restore Lands

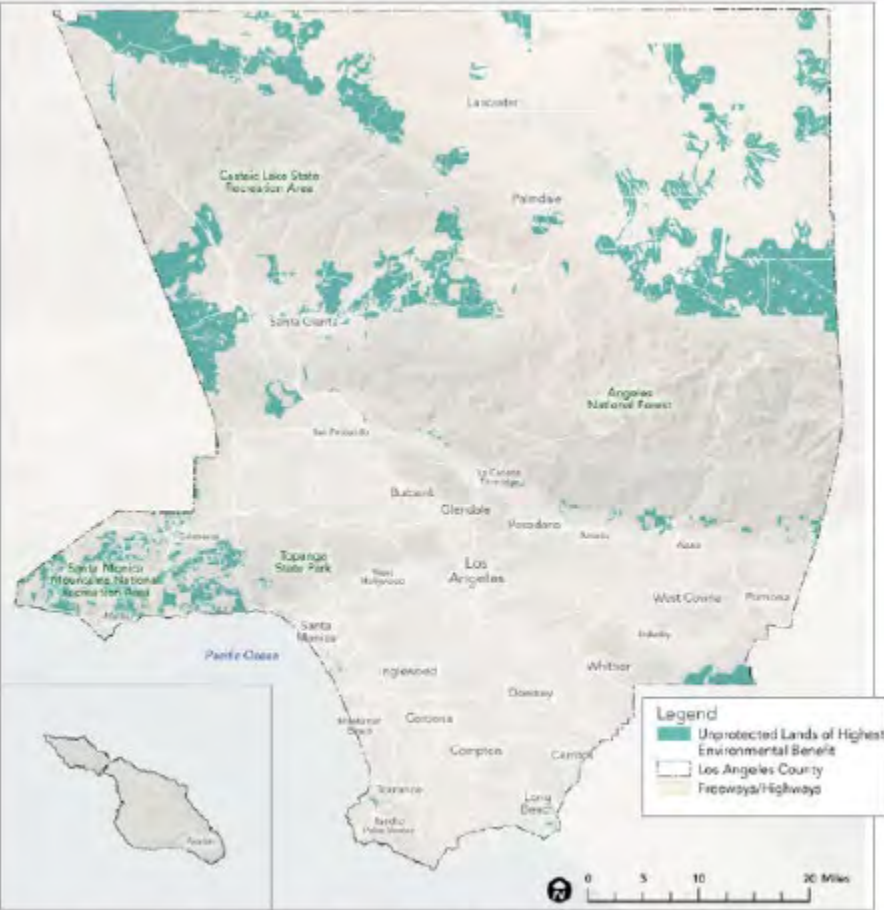


ENVIRONMENTAL BENEFITS



ENVIRONMENTAL BURDENS

Prioritize Areas for Conservation and Restoration

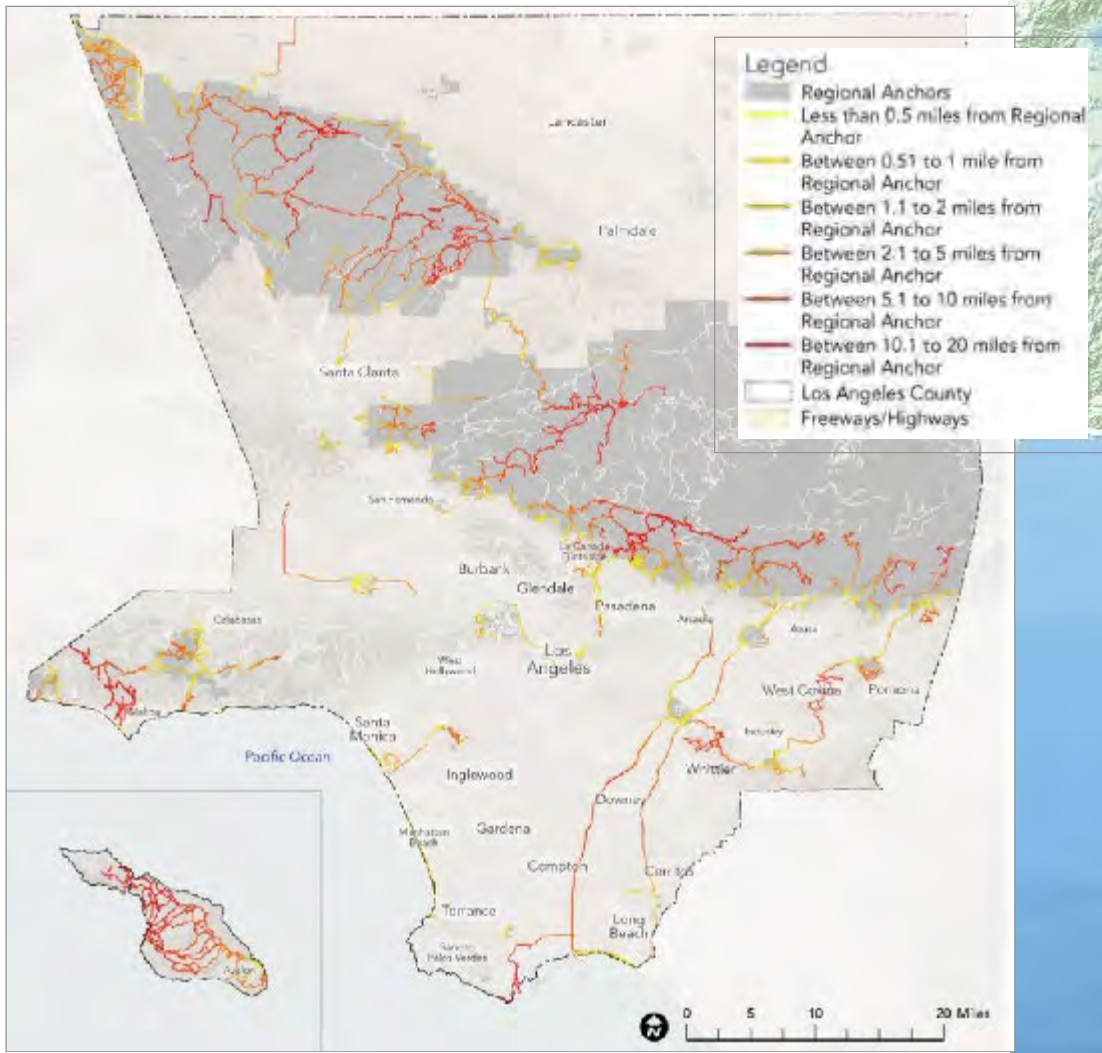


PRIORITY AREAS FOR ENVIRONMENTAL CONSERVATION



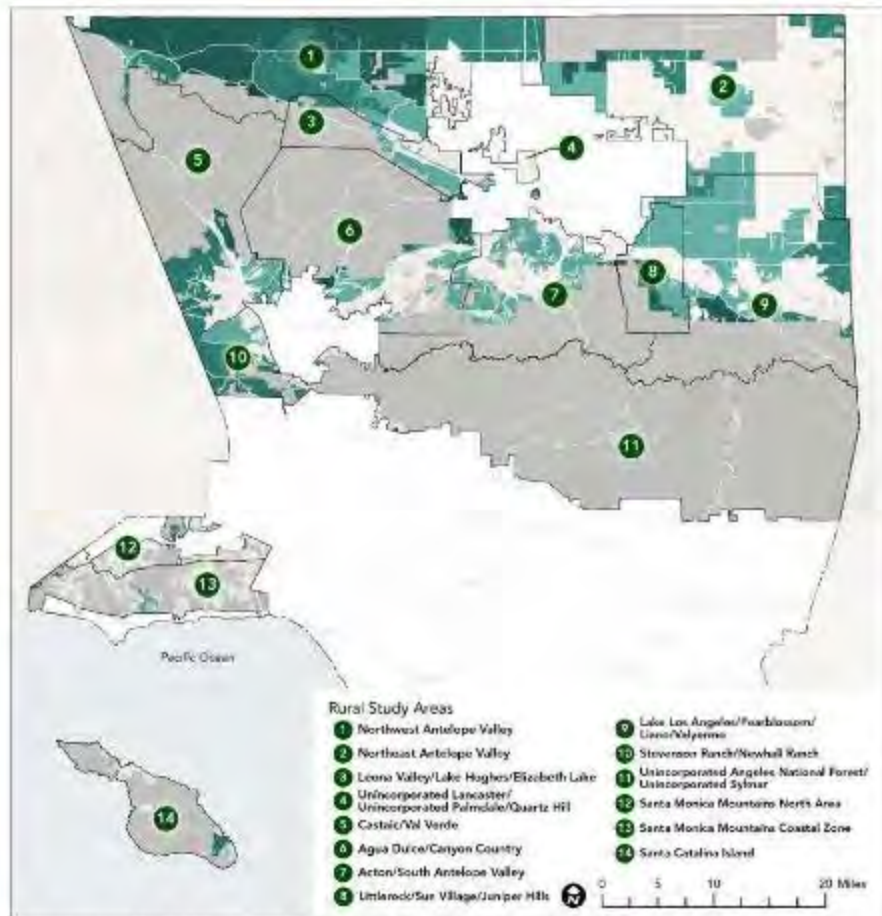
PRIORITY AREAS FOR ENVIRONMENTAL RESTORATION

Regional Trails and Greenways Equity



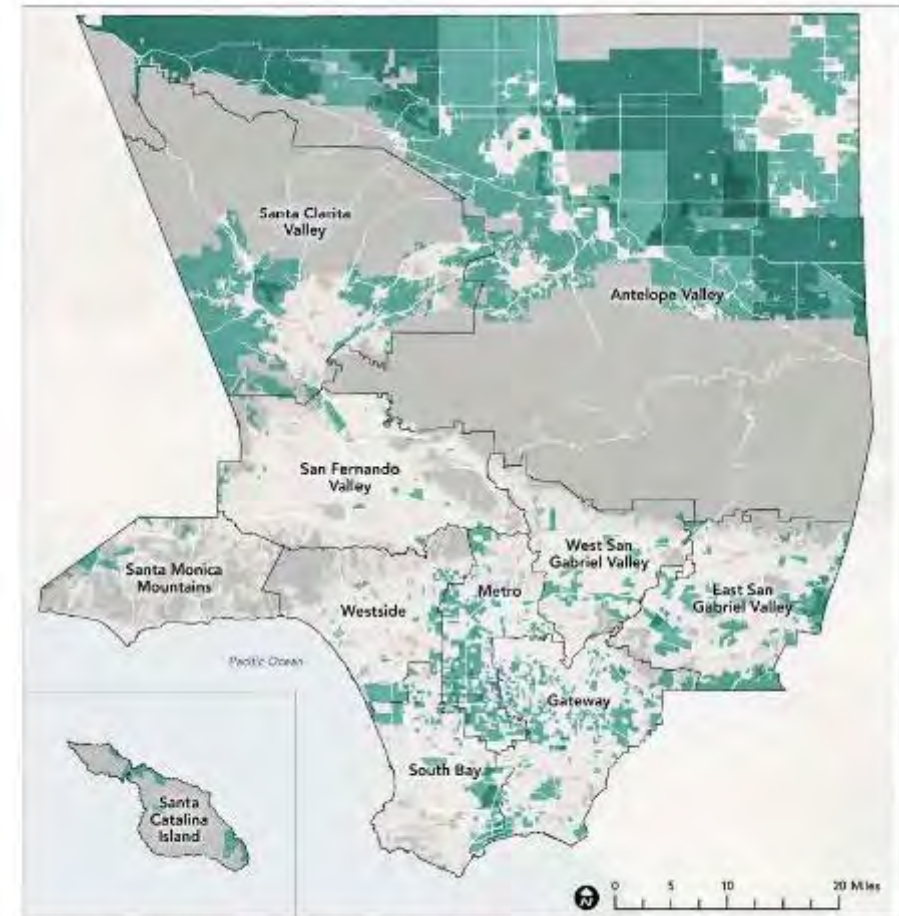
Regional Trail Connectivity

Prioritize Rural Recreation Access and Regional Parks



Map sources: FRA, 2010; US Census, 2013; Esri, 2021; MRS, 2021; LAC GIS, 2021; USGS NHD, 2021

PRIORITY AREAS FOR RURAL RECREATION



Map sources: MRS, 2021; Unacast, 2021; ArcGIS StreetMap Premium, 2021; 2021 RRE Inventory

PRIORITY AREAS FOR REGIONAL RECREATION



Protect Biodiversity through Conservation

**DEVIL'S PUNCHBOWL NATURAL AREA
& WESTERN JOSHUA TREE**



Joshua trees bloom more often with climate change, study finds. Here's why people are worried



Create Multi-Benefit Parks in High Need Areas

NOGALES PARK



Transform Degraded Lands

SAN GABRIEL RIVER PARK





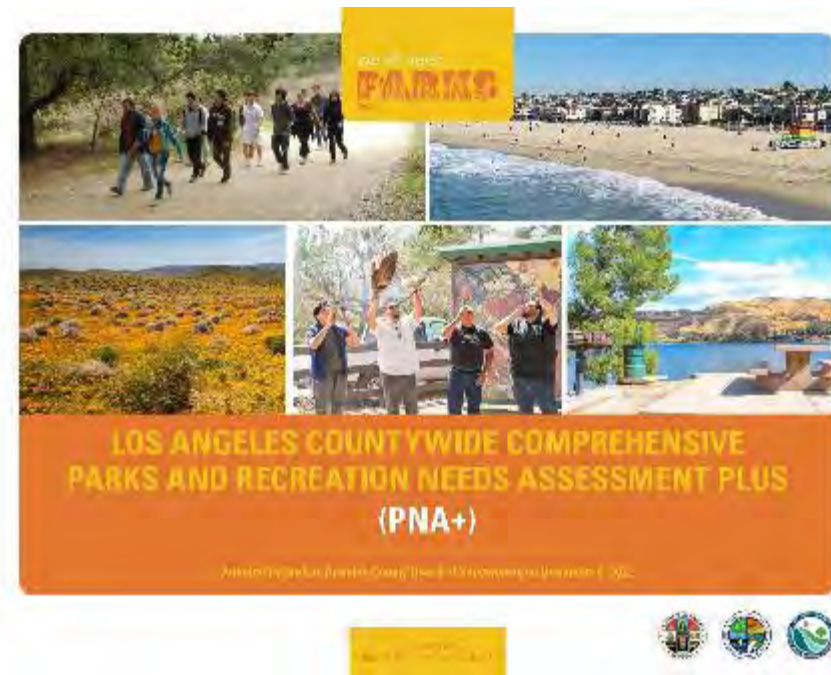
Transform Degraded Lands

WISHING TREE PARK



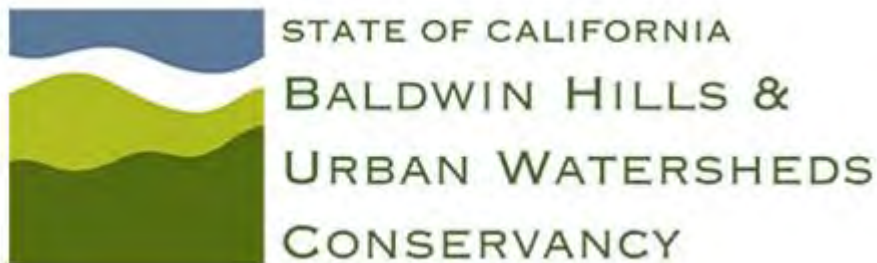
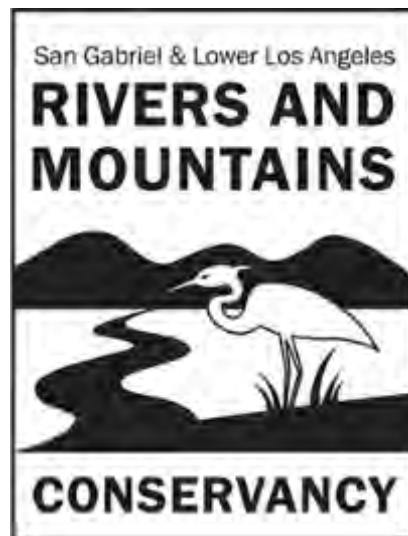
What is the PNA+ Implementation Plan?

- A groundbreaking plan that is the first of its kind in the nation.
- A regionwide strategic approach.
- A framework for prioritizing high need communities.
- In LA County, 84% of the population living in proximity to degraded lands are communities of color.
- Creates resiliency for our most climate vulnerable communities



DPR's Investment Leveraged \$1.5 Million in Grant Funding

- DPR funding launched the project.
- PNA+ Implementation is jointly funded by DPR and three State Conservancies.
- The Plan creates a shared approach across the four government agencies and 16 Coalition members.



Santa Monica Mountains Conservancy

The PNA+ Coalition

- Supports long-term implementation of the PNA+ including advocacy for policy and systems change.
- Provides expert partnership and guidance to co-create project deliverables.
- Led by Nature For All, an organization dedicated to ensuring that everyone has equitable access to the wide range of benefits that nature offers.
- Members are part of dozens of allied networks, creating opportunities to **build bridges with social justice movements.**



Consultant
Team:

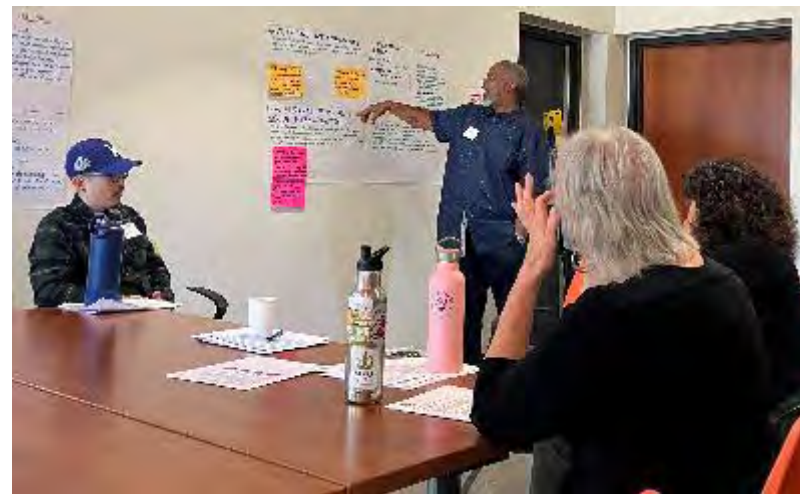


Estolano
ADVISORS



PNA+ Coalition Opportunities

- **Systems change**
 - Focus on **advocacy and policy** to change how conservation and restoration projects are funded at the state and federal level.
- Coalition meets monthly to:
 - Strategize
 - Discuss funding opportunities
 - **Provide critical guiding perspectives** on the PNA+ Implementation Plan



Thank You For
Supporting This
Critical Work!



Contact Information

Los Angeles County Department of Parks and Recreation (DPR)

- Jill Sourial, Deputy Director
jsourial@parks.lacounty.gov
- Sean Woods, Chief of Planning
swoods@parks.lacounty.gov
- Sheela Mathai Kleinknecht, Section Head – Planning
maths@parks.lacounty.gov

