



Community Services Cluster Meeting

LA River Master Plan Update Implementation Report

August 2, 2023

THE LOS ANGELES RIVER

AT A GLANCE

Population:

1M

Residents within
1 mile of the River



Municipalities:

17

River adjacent

River Length:

51

Miles

Linking

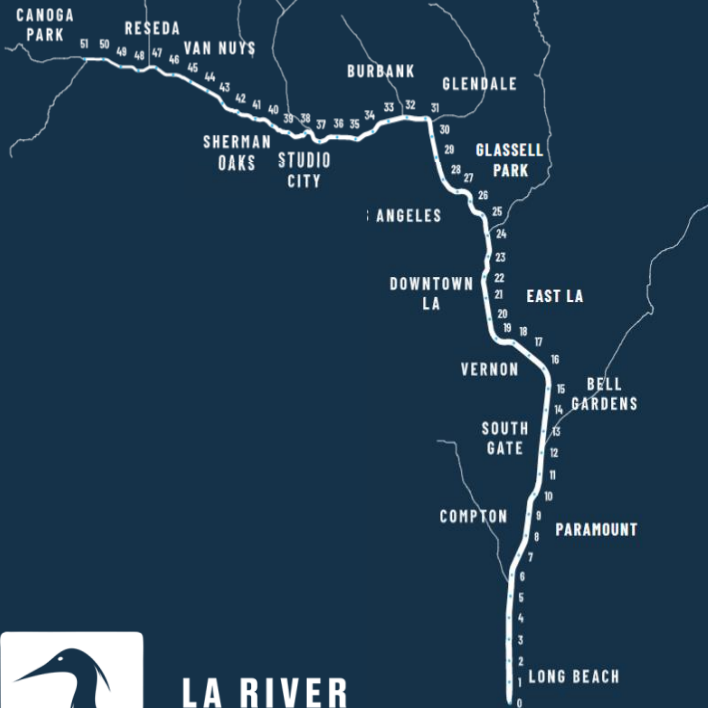
140+

River Related plans

Providing

834

Square miles of
healthy watershed



**LA RIVER
MASTER PLAN**

- LA RIVER MASTER PLAN UPDATE ADOPTION
- IMPLEMENTATION
- EARLY ACTION PROJECTS





3+ Years Community Engagement and Plan Development

1,650

Completed Online and In-Person Surveys

800

Youth Summit Participants

1,306

Participants Across 13 Community Meetings

359

Attendees at Virtual Public Draft Meeting

5,592

Participants in 2 LARMP Telephone Town Halls

981,898

Digital Ad Impressions



3+ yrs

COMMUNITY ENGAGEMENT
AND INPUT



A photograph of a flooded area with power lines in the background.

**Reduce flood
risk and improve
resiliency**

A photograph of people walking on a dirt trail with mountains in the background.

**Provide equitable,
inclusive, and safe
parks, open space,
and trails**

A photograph of a wetland area with tall grass and water.

**Support healthy,
connected
ecosystems**

A photograph of people sitting on a bench in a park-like setting.

**Enhance
opportunities for
equitable access to
the river corridor**

A photograph of a woman speaking at a podium during a community discussion.

**Embrace
and enhance
opportunities for
arts and culture**

NINE GOALS, ONE RIVER.

A photograph of people in a shelter or temporary housing.

**Address potential
adverse impacts
to housing
affordability and
people experiencing
homelessness**

A photograph of a family sitting at a table, engaged in an activity.

**Foster opportunities
for continued
community
engagement,
development, and
education**

A photograph of a large dam structure over a river.

**Improve local water
supply reliability**

A photograph of a city skyline across a body of water.

**Promote healthy,
safe, clean water**

LARMP IMPLEMENTATION MOTION

(Approved by Board of Supervisors on June 14, 2022)

- Establish the LARMP Implementation Team, comprised of various County Departments
- The Implementation Team will establish guidance to prioritize County projects along the River
- PW to further evaluate the 5 Major Project Opportunity Zones and recommend prioritization criteria to the Implementation Team
- PW to further evaluate Extra-Small and Small Opportunity Sites and recommend prioritization criteria to the Implementation Team
- Implementation Team to develop Implementation Strategies including Funding
- Implementation Team to report back annually to the Board on implementation progress

LA RIVER MASTER PLAN IMPLEMENTATION TEAM

EXECUTIVE OFFICE



BOARD OF SUPERVISORS
COUNTY OF LOS ANGELES



LOS ANGELES COUNTY
**CONSUMER &
BUSINESS AFFAIRS**



**Chief
Executive
Office.**



2. PROVIDE EQUITABLE, INCLUSIVE, AND SAFE PARKS, OPEN SPACE, AND TRAILS.

Action/Methods				ACTIONS	Related Actions/Methods
2.1. Create 51 miles of connected, public open space along the river.					
County Lead	Potential Partners	Geographic Boundaries	Potential Funding Sources		
DPR	PW/FCD, DRP, USACE, SMMC, RMC, MRCA, WCA, Conservation Corps	LA River Corridor + Surroundings	Measure A; Prop 68; Proposed State Climate Resilience Bond 2020		
2.1.1	Create a park setting along the entire river that is integrated with native ecology, utilizing this plan's design guidelines (LA River Design Guidelines).				2.4.2.
2.1.2.	Utilize river channel right-of-way and adjacent areas to increase park space and prioritize implementation of right-of-way projects in underserved and/or high and very high park need communities.				
2.1.3.	Promote the river as a central greenway in the larger LA County network of regional parks, multi-use trails, habitat, and open space.				
2.1.4.	Develop river channel right-of-way and adjacent areas equitably to ensure that all LA County residents live within a half mile of a park.				
2.1.5.	Provide river-oriented and other amenities and experiences in existing and new park spaces that are not currently available at nearby parks, and increase unique programming along the river corridor.				
2.1.6.	Preserve and create viewsheds along the river, to the river, and from bridges over the river.				JURISDICTION
2.1.7.	Secure ongoing and long-term funding for land acquisition, construction, and maintenance of additional parks and recreational facilities and prioritize funding for park facilities in high and very high park need areas to ensure that funding benefits the communities with the greatest need.				
2.1.8.	Increase recreation uses within the corridor where compatible with ecological function, safety, and maintenance.				
2.1.9.	Encourage clean-up of brownfield and toxic sites along the river for use as parkland and habitat areas.				
2.1.10.	Encourage active programming of park spaces along the LA River, and pilot interim programming uses of underutilized areas.				
2.2. Complete the LA River Trail so that there is a continuous route along the entire river, and encourage future routes on both sides where feasible.					
County Lead	Potential Partners	Geographic Boundaries	Potential Funding Sources		
DPR	PW, Municipalities, SMMC, RMC, MRCA, WCA	LA River Corridor + Surroundings	Federal Transportation; Prop 68; Measure A; Measure M; Proposed State Climate Resilience Bond 2020		

ACTIONS

FUNDING

JURISDICTION

COUNTY
DEPT
LEAD

PARTNERS

LOWER LA RIVER TRAIL RESTORATION & ACCESS GATEWAY PROJECT

Objective: *Develop schematic designs to improve 1.3 miles of the Lower LA River Trail & elevate 72nd Street Equestrian Park as a proper access gateway that welcomes the community to the river.*



- Phase I Planning Project to lay the groundwork for implementation (Phase II Project)
- Robust community engagement will inform the design and future improvements, including but not limited to:
 - Fencing Upgrades & Landscape Improvements
 - Enhanced Wayfinding & Branding
 - Re-establishment of 0.4 miles of existing trail
 - Underpass enhancements at Atlantic Ave. & Alondra Blvd. (*potential collaboration opportunity with local artist/s*)
 - Access gateway improvements at 72nd Street Equestrian Park to establish a stronger connection with the River

LA RIVER HEADWATERS PAVILION PROJECT





CONTACT:

Ramy Gindi, Principal Engineer
Los Angeles County Public Works
rgindi@pw.lacounty.gov
(626) 458-4309

WEBSITE:

LARiverMasterPlan.Org



Historic Preservation Program

Community Services Cluster

August 2, 2023

Program Components

- Mills Act Program
- Historic Preservation Program
- Certified Local Government Program (CLG)
- Projects

Mills Act Program

- 1972 - State Enacts the Mill Act
- 2013 - Board Adopts the Mills Act Program

Historic Preservation Ordinance

- Adopted in 2015
- 9 Designated Landmarks
- 1 Nominated Landmark
- 1 Nominated Historic District

Certified Local Government Program

- 2020 - County accepted into the national program.
- Program administered by the State.
- National Register nomination reviews.
- Grant access.

Historic Districts - Historic Highlands



Projects

- Historic Context Statements
- Historic Resource Surveys
- Mills Act Maximum Assessed Values Increase Project
- Work Guidelines for Landmarks and Historic Districts
- Program Update
- General Plan Historic Preservation Element

Equity Supporting Cases & Projects

- **Cases**
 - Chester Washington Golf Course Landmark
 - Jackie Robinson Park Landmark
- **Projects**
 - Altadena African American Historic Resources Survey
 - Sun Village African American Historic Resources Survey
 - Florence Firestone Historic Resources Survey

Chester Washington Golf Course Landmark



Maggie Hathaway,
golfer - 1957

Maggie Hathaway

Supervisor Kenneth Hahn



LA COUNTY

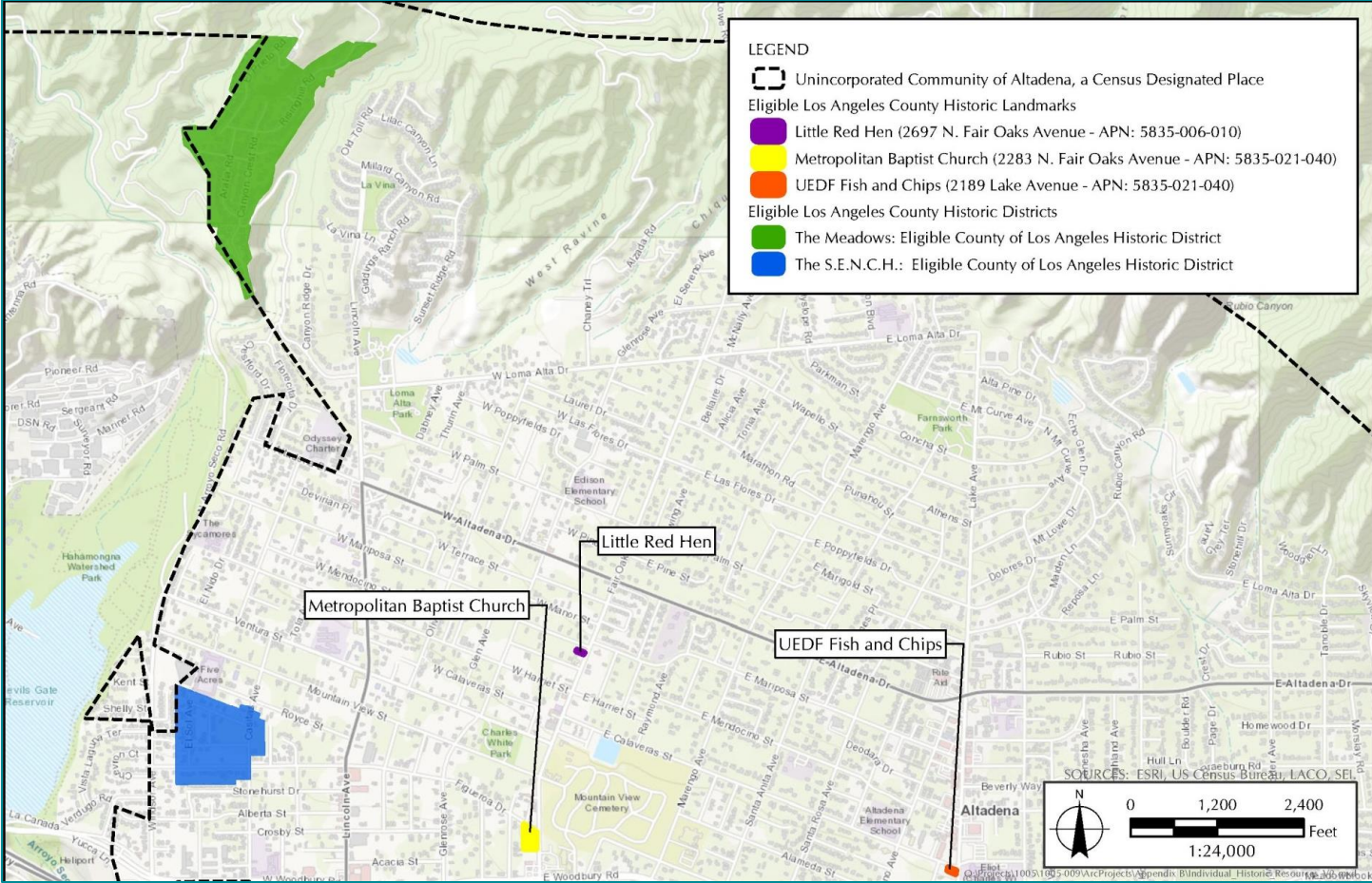
PLANNING

SHAPING TOMORROW

Jackie Robinson Park Landmark



Altadena African American Historic Resources





Sun Village African American Historic Resources Survey

SHAPING TOMORROW

Florence Firestone Historic Resources Survey



Historic Preservation Program

planning.lacounty.gov/preservation

preservation@planning.lacounty.gov