



2023 Storm Season Update

Community Services Cluster
February 1, 2023

Public Works

LOS ANGELES COUNTY



Public Works

LOS ANGELES COUNTY

LA
st
Offic



Official: LA County storm recovery may cost \$100 million

Southern California storms clear, recovery & damage assessment begins



Drivers hit potholes filled with water along Van Nuys Boulevard as rain moves into Southern California Monday, Jan 9, 2023. (Photo by Gene Blevins/Contributing Photographer)

Stormwater Capture

- Region received more than 15.3" of rainfall since October 2022.
- County captured more than 143K AF or 46.6 billion gallons.
 - 555 Rose Bowls
- Enough water for more than 1.1M people for one year.



Reservoir Restoration

- 14 major dams
- Climate Change causing weather whiplash and wildfires, filling our reservoirs with sediment, rocks, and debris—jeopardizing the water resiliency of the region.
- Due to Bobcat Fire, emergency projects at Cogswell and San Gabriel Dams underway at a cost of \$225M and an emergency project at Santa Anita Dam is planned to start in March for \$50M.
- 10-year Reservoir Restoration Program will remove 15 MCY of sediment at a cost of \$550M.

Building Local Supplies

- Safe Clean Water Program:
 - Region will capture another 56,900AF or 18.5 billion gallons a year
 - Enough to serve 500,000 people for one year.
 - To date, Program has awarded \$400M for 101 projects across 47 municipalities.
 - This represents a \$1.2B investment with \$530M going to Disadvantaged Communities.
- County Water Plan:
 - Regional collaboration between water agencies to increase resilience.
 - Board will consider mid-2023.
 - Examples: Pure Water, Tujunga and Pacoima Spreading Grounds, etc.



Public Works

LOS ANGELES COUNTY

Questions?

Historic Storms Coastal Erosion & Coastal Resiliency Update



LOS ANGELES COUNTY
DEPARTMENT OF BEACHES & HARBORS

Point Dume Access Road



Broken Drain/Severe Erosion



Point Dume Restroom



Latigo Shores



South Topanga



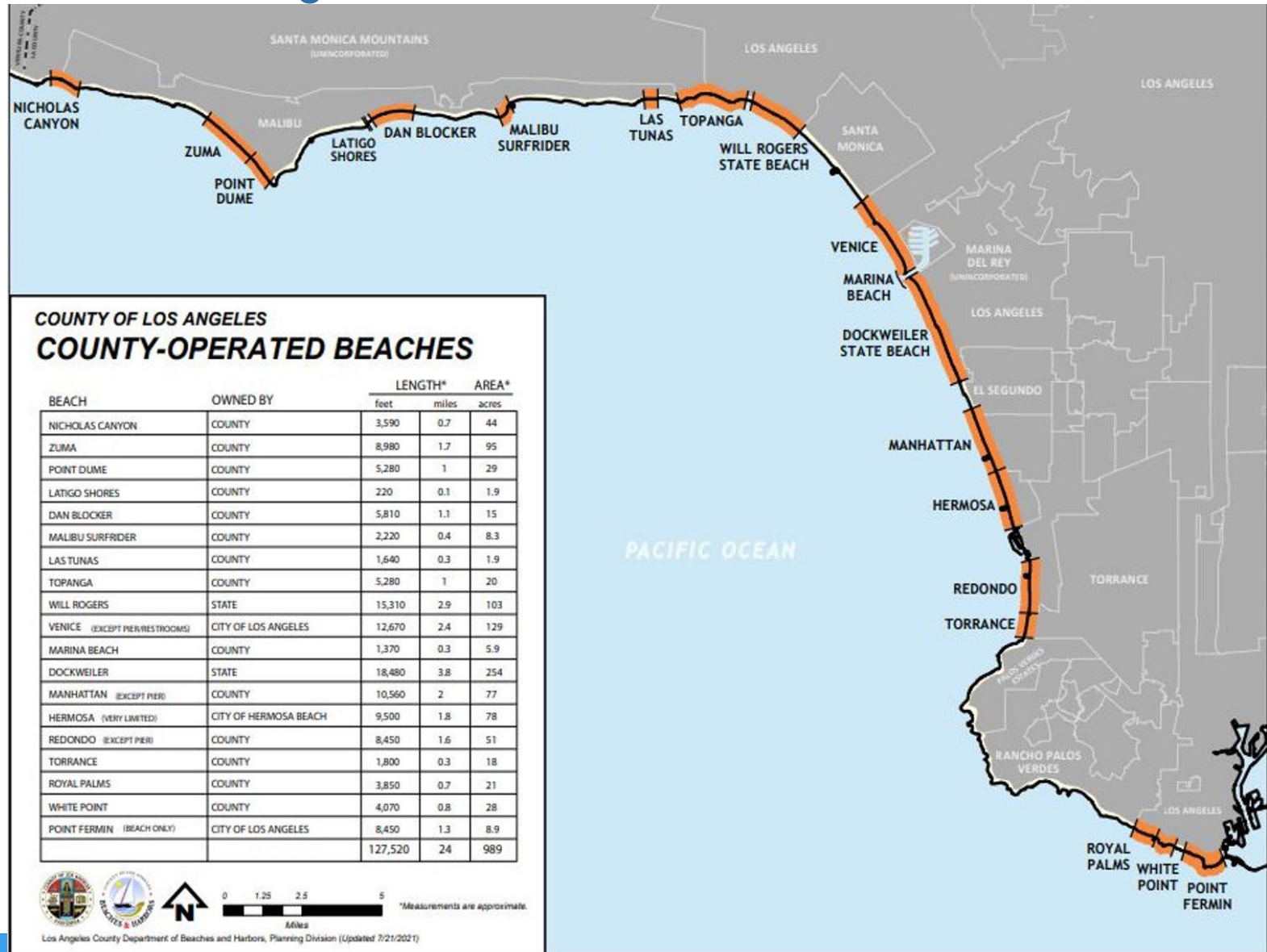
Dockweiler Beach



Manhattan Beach



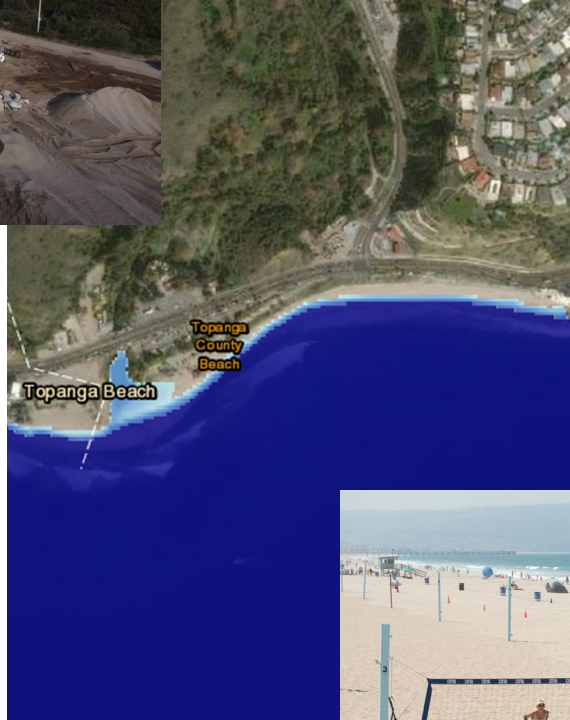
Vulnerability Assessment of 19 Beaches



Decision Matrix Development



Existing
Conditions



Potential Future
Sea Level Rise



Resources
&
Amenities

Potential Adaptation Strategies

