

Los Angeles County

Regional Park & Open Space District (RPOSD)

Community Services Cluster Meeting

September 7, 2022



Norma E. García González

Director, LA County Department of Parks and Recreation (DPR)
Director, RPOSD

Christina Angeles

District Administrator, RPOSD

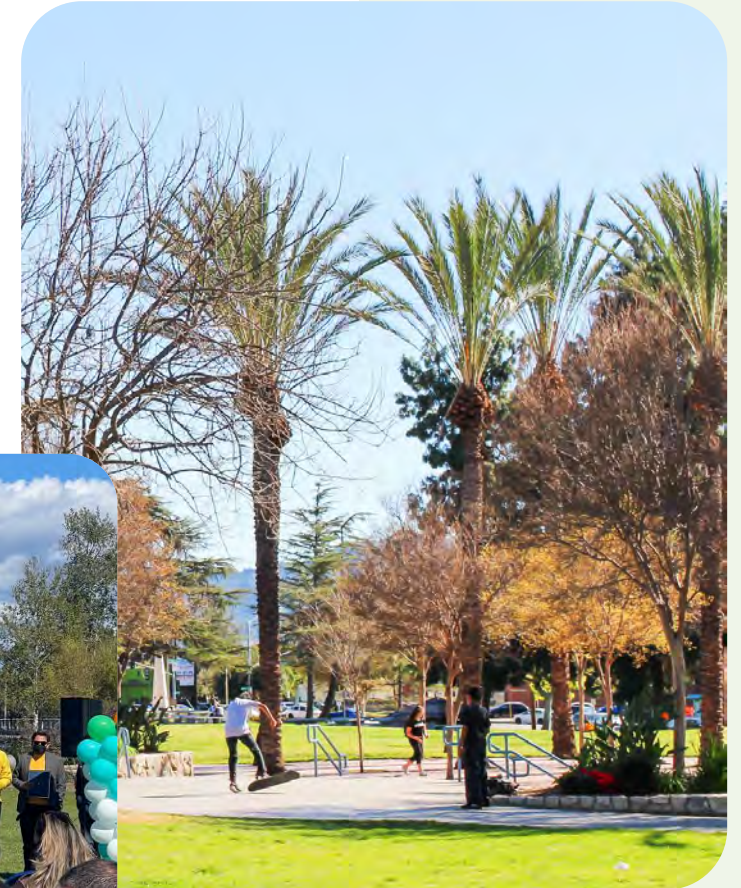


What We Do...



RPOSD is a Grant Funding Agency

- Created in 1992
- Special District whose boundary is the County of Los Angeles
- Includes all 88 Cities and the Unincorporated Areas of the County
- Cities, various County Departments, and Non-Profits/CBO's are provided funding to acquire, improve, and maintain parks and open space



How do we grant funds?



- RPOSD was created through voter approved **Proposition A** of 1992 and a second **Prop A** of 1996 (expired in 2014 and 2018, respectively)
- **Measure A** was approved in 2016
 - Implemented a parcel tax on properties within Los Angeles County
 - Exceptions: Publicly owned parcels and non-profits (churches, schools, etc.)
 - 1.7 cents/square foot of improvements on the parcel, subject to CPI bi-annual adjustment

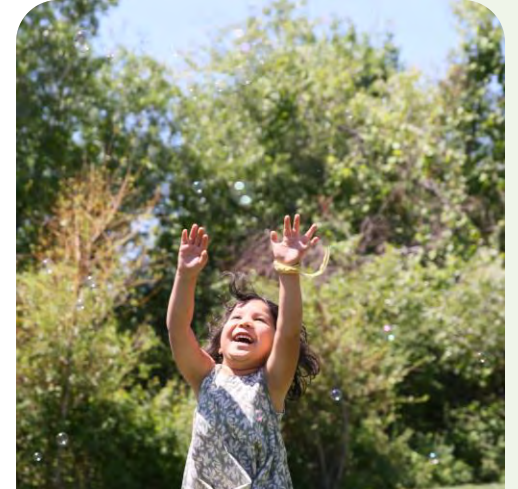


Stats & Achievements



RPOSD has allocated \$1.5 Billion in grant funding since 1992

- ✓ 1,786 Proposition A grants awarded
 - ✓ \$1.2 Billion allocated
- ✓ 262 Measure A grants awarded
 - ✓ \$300 Million allocated



RPOSD's Mission

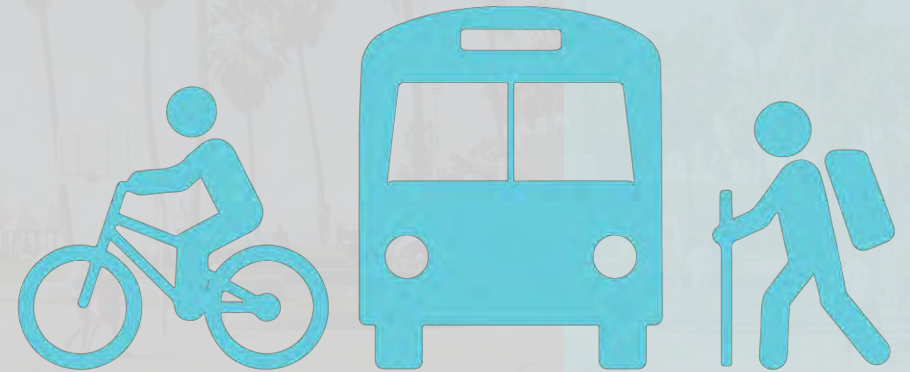


“To enrich and empower the communities of Los Angeles County through innovative grantmaking for parks and open space.”



Since passage of Measure A, RPOSD has allocated approximately \$300M in Measure A funds to cities and park development agencies to help fund new park space, create better access to existing parks, maintain parkland, and improve park amenities.

Competitive Grant Programs



Measure A grant funds are funded through taxpayer dollars to develop, enhance and provide greater access to parks, trails and open space projects, as well as boost the local economy through the creation of jobs.

A portion of these grant funds are available on a **competitive** basis.

Competitive Grant Programs Awarded for 1st Cycle



Natural Lands, Local Beaches, Water Conservation & Protection

- For projects that improve and protect open space, watersheds, and water resources through planning, acquisition, development, improvement, and restoration of multi-benefit parks
- 11 Grants
- \$9.4M



Regional Recreation Facilities, Multi-Use Trails, & Accessibility

- For acquisition, development, improvement, restoration, or rehabilitation projects that improve and protect regional recreational facilities, trails, and accessibility
- 13 Grants
- \$11.1M



Acquisition - Only

- For acquisition-only projects that prioritize urgent acquisitions in Study Areas with High or Very High Park Need as well as trail connections and access, wildlife corridors, and critical habitat
- 6 Grants
- \$5.7M



-



Competitive Grant Programs Launched June 2022 (2nd Cycle)



Youth & Veteran Job Training & Placement

- For education, skills training (career development), certification, and job placement programs in the field of parks and recreation for youth and veterans
- Up to **\$10.9M** available



Recreation Access

- For programs that aim to increase residents' accessibility to public lands, park facilities, including education, interpretive services, safely information, transportation, and other activities, especially High and Very High Need Areas
- Up to **\$11.1M** available funded by Measure A
- Collaboration with Los Angeles County Metropolitan Authority (Metro)
- **\$1M** in Metro Funding towards:
 - Transit to park programs and initiatives
 - Service improvements that directly connect communities to high quality park facilities

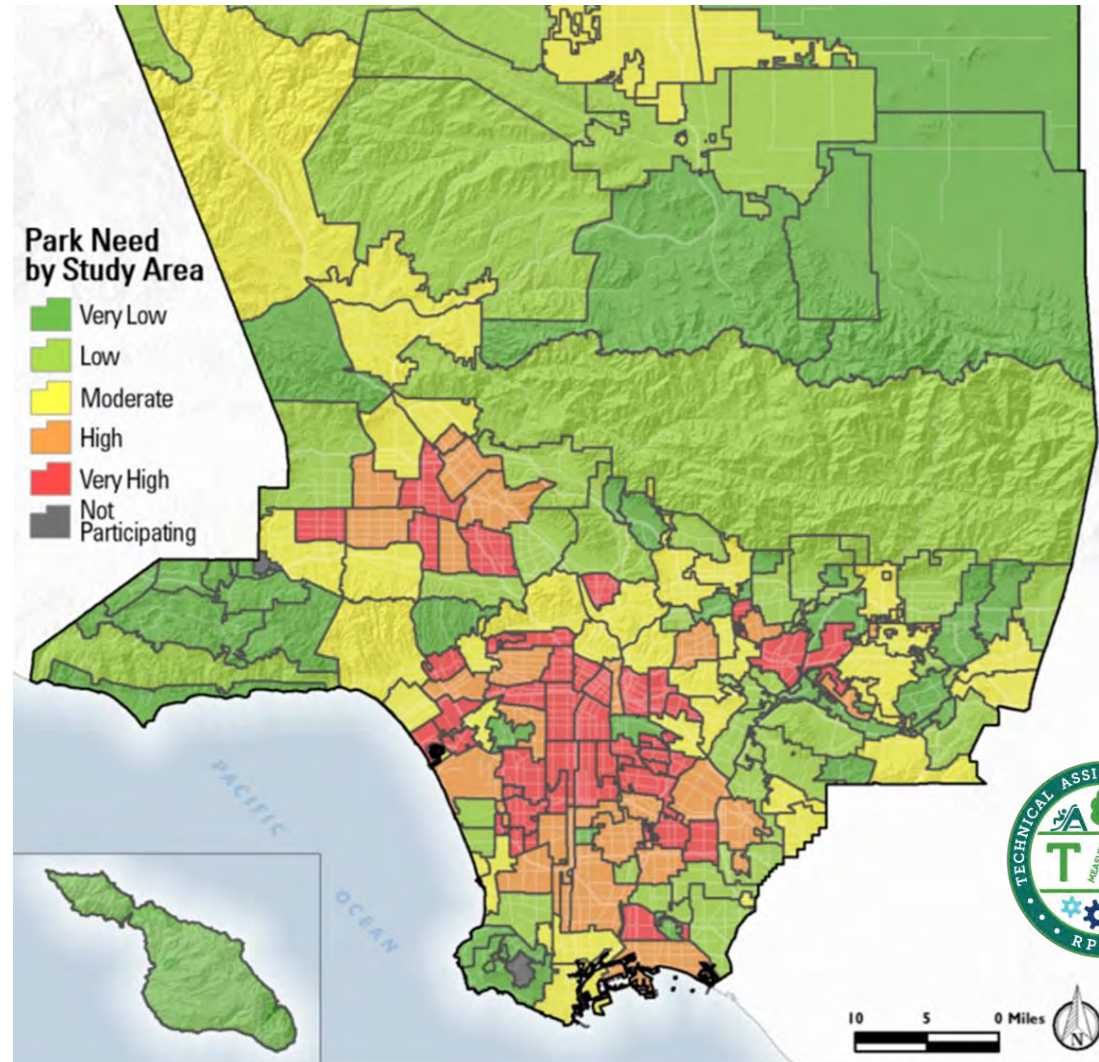


Creation and Implementation of TAP



Measure A sets aside a portion of funding for Technical Assistance to tackle park inequity by pursuing the following goals:

- ❖ Effectuating change in park poor communities by providing financial resources to assist with park acquisition and expansion
- ❖ Ensuring cities in High Park Need areas can:
 - Successfully compete for Measure A
 - Leverage other funding opportunities (local, state, federal, & private)



July 2022

RPOSD announced the allocation of over **\$9 Million** in Measure A funding for technical assistance services to 30 cities and unincorporated areas of Los Angeles County in High & Very High Park Need Areas

TAP Allocations

The announcement was made through a very high-profile and well attended press event. Extensive media coverage resulted in more than two million media impressions and over \$80 thousand in estimated media value.



TAP Allocations – July 2022



- ❖ Innovative Direct Allocation Approach
- ❖ Eliminates need to apply for individual grants
- ❖ Reimbursement of pre-acquisition costs resulting in new park projects
 - Community engagement
 - Planning
 - Real Estate
 - Environmental Services
- ❖ Future TAP allocations will have different areas of emphasizes
 - Community outreach
 - Planning & Design
 - Grant Writing
 - Project & Construction Management
 - Multijurisdictional projects





Christina Angeles

District Administrator

Email: CAngeles@RPOSD.LAcounty.gov

Phone: 626.588.5024

Thank You



Los Angeles County
Regional Park and Open Space District

Email: info@rposd.lacounty.gov

Phone: 626.588.5060

Website: RPOSD.LAcounty.gov

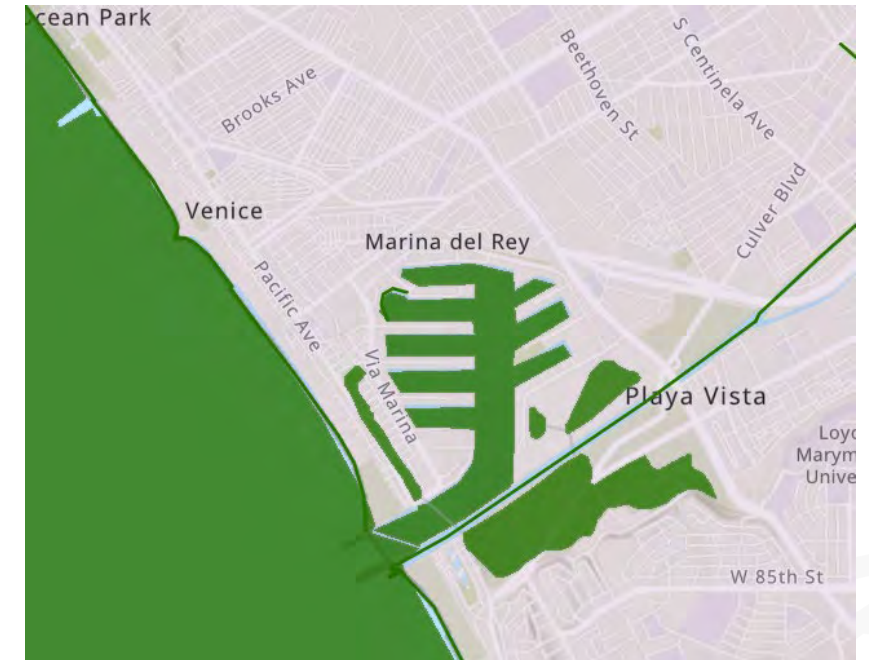
Water Quality Total Maximum Daily Loads (TMDLs)



LOS ANGELES COUNTY
DEPARTMENT OF BEACHES & HARBORS

Water Quality Issues in Marina del Rey (MdR) and at County Beaches

- Los Angeles Regional Water Quality Control Board regulates water quality in Los Angeles County
- Water quality is not meeting the State's standards for multiple pollutants including bacteria and copper in MdR and trash/debris in the Santa Monica Bay.
- A Total Maximum Daily Load (TMDL) sets a limit on the amounts of pollutants a water body can receive while still meeting water quality standards
- DBH works primarily with three TMDLs:
 - Bacteria
 - Trash/Debris
 - Toxics



Trash/Debris TMDL – Overview

- TMDL covers Santa Monica Bay beaches and MdR
- Includes targets to reach both zero trash and zero plastic pellets entering the bay by March 2020, and every year thereafter
- Primary pollutant sources:
 - Littering
 - Commercial establishments and public venues
 - Industrial discharges
 - Garbage transportation
 - Landfills
 - Construction debris
- Best management practices (BMPs) include:
 - Source control at facilities, trash skimmers, installation of full-capture devices at catch basins, street sweeping, school outreach, Clean Marinas Program, etc.



Bacteria TMDL – Overview

- TMDL covers MdR back basins
- TMDL adopted by Regional Board in 2003; approved by EPA in 2004; Revised in 2012/2014
- Includes a limit on allowable exceedance days by sampling location (deadline July 15, 2024)
- Pollutant Sources:
 - Dry-weather and stormwater runoff;
 - Natural sources from birds, waterfowl and other wildlife



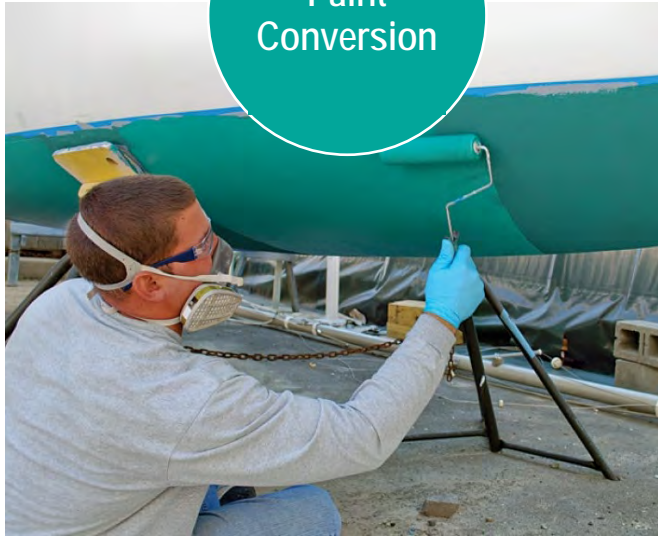
Toxics/Copper TMDL – Overview

- TMDL covers MdR harbor
- Adopted by Regional Board in 2005; approved by EPA in 2006; Revised 2014/2015
- Includes numeric targets for sediment, the water column, and fish tissue
- LA County is responsible for sediment targets
- LA County, anchorages, and boat owners are responsible for dissolved copper targets
 - Primary source of copper from antifouling paints on boats
 - Passive leaching
 - In-water hull cleaning activities
- Current TMDL deadlines:
 - In-harbor sediments: **March 22, 2029**
 - Dissolved copper from boats: **March 22, 2024**

Media	Contaminants with Numeric Targets
Sediment	Copper, lead, zinc, chlordane, PCBs, total DDTs, and p,p'DDE
Water Column	Dissolved copper and PCBs
Fish Tissue	Total PCBs

Copper Reduction Program Initiatives

Paint
Conversion



- Evaluate alternative paints (e.g., non-copper, non-biocide) through pilot studies
- Paint county boats with non-biocide hull paints

Remove
Boat Hull
from Water



- Identify options: boat lifts and in-water dry docks
- Study effectiveness: In-water dry dock pilot

Hull
Cleaning
BMPs



- Require use of in-water hull cleaning best management practices (BMPs) through ordinance
- Provide/develop hull cleaning BMP trainings

Additional TMDL Program Initiatives

- Outreach and Education
 - Flyers
 - Website
 - MdR Copper TMDL Stakeholder Work Group
- Collaboration with Public Works on Special Studies
 - Sediment Stressor Identification Study (2016)
 - Site Specific Objective Study (SSO)
- Contaminated Sediment Management Plan

