

# PARKS' BUSINESS AND OPERATIONS PLAN







LOS ANGELES COUNTY

Parks & Recreation

Life. Enjoyed.

## MISSION

SERVE AS STEWARDS  
OF PARKLANDS

BUILD HEALTHY &  
RESILIENT COMMUNITIES

ADVANCE SOCIAL  
EQUITY  
AND COHESION

PARKS.LACOUNTY.GOV



# BUSINESS OPERATION PLAN

Completed

- Recreation/Park Districts
- Staffing standards with existing on budget and allocated FTE's
- Core Department Programs
- Department Operations Manual
- Production & Programming Schedule
- Cost Recovery Model
- Centralization: Communications, Purchasing and Warehouses
- Partnership: Core and Community Partnership & School MOA
- Scholarship Program
- Department Workforce Pathway(s)
  - Recreation (Youth@Work -to- Park Aide -to- Recurrent RSL -to- Permanent RSL)
  - Grounds Maintenance (PLACE/Conservation Corps to Permanent Grounds Maintenance)



## STAFFING ALLOCATION BASED ON THE STANDARD

- Ensure equitable distribution of staffing by park classification, amenities and equity/high need and park isolation
- Ensure core program delivery
- Maximize park's amenity usage
- Establish park budgets that includes staffing
- Establish consistent (standard) for New Facilities request for staffing and services & supplies
- Forecast operating costs for New Facilities
- Enhance programs through core and community partners, cost recovery and scholarship programs
- Provide for consistent recreation operations and programming Department-wide



# STAFFING STANDARDS



Park  
Classification



Amenities



Core Programs



*Equity/High Need &  
Park Isolation*



Standards



# STAFFING STANDARDS

## Neighborhood Park

- RSL: 1.4
- RSS: 0.5
- Park Aide: 0.6
- Senior Center: 0\*

## Community Park

- RSL: 1.2
- RSS: 1.0
- Park Aide: 0.6
- Senior Center: 0\*

## Community Regional Park

- RSL: 1.2
- RSS: 1.0
- Park Aide: 0.28
- Senior Center: +0.73 RSL

## Neighborhood Park

- RSL: 2.1
- RSS: 1.0
- Park Aide: 0.6
- PAD: +0.65 RSL
- Our Spot: +1.39 RSL
- Senior Center: 0\*

## Community Park

- RSL: 2.1
- RSS: 1.0
- Park Aide: 0.8
- PAD: +0.71 RSL
- Our Spot: +1.39 RSL
- Senior Center: 0\*

## Community Regional Park

- RSL: 3.0
- RSS: 1.0
- Park Aide: 0.8
- PAD: +0.8 RSL
- Our Spot: +1.39 RSL
- Senior Center: +0.73 RSL

High Need Park

Note: \*Senior programming currently not funded and provided by BOS discretionary funds on a year-to-year basis.



# BUSINESS OPERATIONS PLAN

- Provide a road map to drive **equity** in programming, resource allocation and infrastructure investment
- Ensure most **vulnerable communities** are provided free and affordable core programs
- **Standardize Department operations** to align with LA County's Anti-Racism, Diversity and Inclusion (ARDI) and Care First-Jail Last:
  - Extend park hours of operation
  - Extend out of school prevention/diversion programs
  - Extend youth jobs and pathway initiatives



## Staffing Standards



## Core Programs



## Resource Allocation

Adult Programs

Aquatics & Water Sports

Arts & Culture

Fitness & Wellness

Golf

Nature Centers & Education

Community Use & Rentals

Senior Programs

Special Events

Youth Programs

Youth Sports

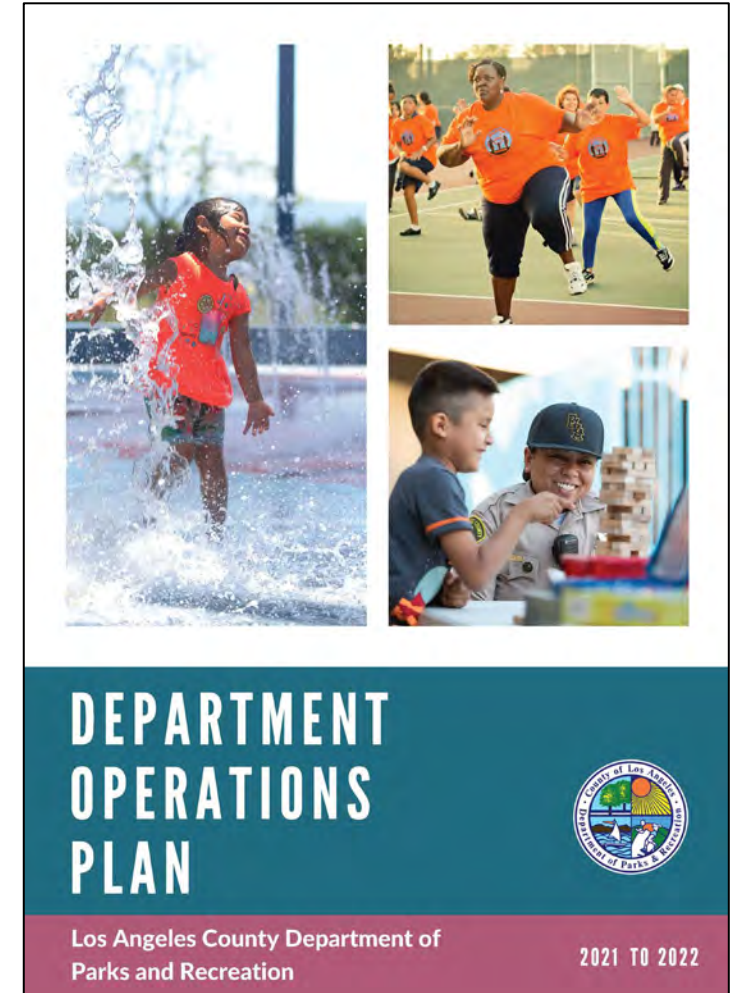
Trails



# DEPARTMENT OPERATIONS PLAN

The Department's Operations Plan was developed to prioritize the safety, equity and access of our operations, services and programming in the following:

- Standardized seasons for programming and operations
- Standardized days/hours of operations based on park classification
- Standardized recreation program schedules





# PROGRAM PRODUCTION SCHEDULE

2021-22 Program Production Schedule

Seasons	Summer June – Aug (13 weeks) 6/7/21 – 9/3/21	Fall Sept – Nov (12 weeks) 9/7/21 – 12/3/21	Winter 2021-22 Dec-Feb (10 weeks) 12/6/21-2/11/22	Spring Mar – June (12 weeks) 2/28/22 – 5/20/22
Solicit New Contract Class Instructors/ Solicit Class Proposals from Returning Instructors	Feb 4-Mar 11		Aug 17-Sept 11	Nov 15-Dec 10
Recruit Recurrent Staff	Feb 4-Mar 11	June 8-16	Aug 17-Sept 11	Nov 15-Dec 10
DPR Staff Submits New Program Proposals	Feb 21 & Mar 4	June 15	Nov 13	Nov 30 & Dec 8
Agencies to Submit Recurrent Items to HR Needed to Support Seasonal Programming	Feb 4-Mar 11	June 8-19	Nov 16	Nov 16, 2020 (DPR programs)
Contractors Submit Proposal Form (s) & DPR Submits New Program/Activity Request Form	Mar 12	June 19	Sept 11	Dec 10
DPR Reviews Contract Class Proposals & DPR Program Review Committee Convenes to Review New Programs	Mar 15-19	June 22-26	Sept 14-18	Dec 13-17
DPR Interviews Recurrent from Ongoing Pool	Mar 15-19	June 22-26	Sept 21-25	Dec 13-17
Confirm Selection of Instructor/Proposals & Notify Instructors	Mar 22-26	June 29-July 3	Sept 28-Oct 4	Dec 20-30
DPR Makes Selection & Commences Hiring Process	Mar 22-26	June 29-July 3	Sept 28-Oct 4	Dec 20-30
Email DPR to Submit Seasonal Programming to Enter Into ActiveNet (i.e., sports, specialty camps, etc).	Mar 15-26	June 15-June 26	Sept 14-25	Dec 13-17
Email Notification to DPR Staff to Copy Over/Retire ActiveNet Activities from Previous Season	Mar 15-19	June 22-26	Sept 21-25	Jan 3-7
Send Advertising Copy to PIO	Apr 5	July 6	Oct 5	Jan 10
Set-up new Instructors in ActiveNet	April 12-16	July 19-23	Oct 5-16	Jan 17-21
Enter Activities into ActiveNet	April 12-16	July 19-23	Oct 4-8	Jan 17-21
Verify GL Account for New Programs	April 12-16	July 19-23	Oct 4-15	Jan 17-21
Open Activities to View in ActiveNet (not open for registration)	April 19	July 26	Oct 12	Jan 24
Launch Marketing	April 19	July 26	Oct 12	Jan 24
<b>Registration Deadline</b>	<b>May 15</b>	<b>Aug 15</b>	<b>Nov 13</b>	<b>Feb 23</b>
Registration Opens	May 3 <b>Summer Camp ONLY March 15</b>	July 26	Oct. 22	Jan 24
Session Begins	June 7	Sept 7	Dec 6	Feb 28
DPR Staff to Audit Classes/Programs	Aug 2-6	Nov 16-20	Feb 14-18	May 17-21
Session Ends	Aug 20	Nov 20	Feb 25	May 20
Class/Program Evaluations to Participants & Instructors	Aug 23-27	Nov 30-Dec 4	Feb 23-26	May 17-20
Make-Up Week	Aug 30-Sept 3	Nov 30-Dec 4	No Make-Up Week	May 23-27
Staff Training for Next Season	Sept 1-4	Nov 30—Dec 4	No Training Week	May 23-27 or May 31-June 3
Break (no contract class/DPR Program offerings)	Aug 30-Sept 3	Nov 30—Dec 4	Dec 20-Jan1	May 23-June 3
Prepare Quarterly Program Report for DPR Staff	Sept 13-17	Dec 14-18	Mar 14-18	June 20-24
Send Eval Feedback to Instructors/Agencies	Sept 30	Jan 8	Apr 11	June 30
Review PM 614 & Contract Class Handbook to update for 2022/23				January 17
Issue 2022/23 Agreement				March 14-Apr 1
No classes/Programs on County observed holidays	7/5-Independence Day	9/6-Labor Day 10/11-Indigenous People Day 11/11-Veteran's Day 11/25 & 26-Thanksgiving Day's	12/24-Christmas Day 12/31-New Year's Day 1/17-Martin Luther King Jr. Day 2/21 -President's Day	3/28-Cesar Chavez Day 5/30-Memorial Day
Tasks Shaded in Green Apply to HR				

Revised 3-10-21

- Consistent programming communities, families and youth can depend on
- Planning for program development, community outreach, procurement of supplies/equipment, hiring processes and public registration (ActiveNET)
- Improved schedule coordination for grounds and trades, including deferred maintenance.
- Marketing campaigns and seasonal programming
- Recruitment and hiring timelines match programmatic needs by season
- Specialized training to support program delivery
- Program evaluation

# PROGRAM COST RECOVERY

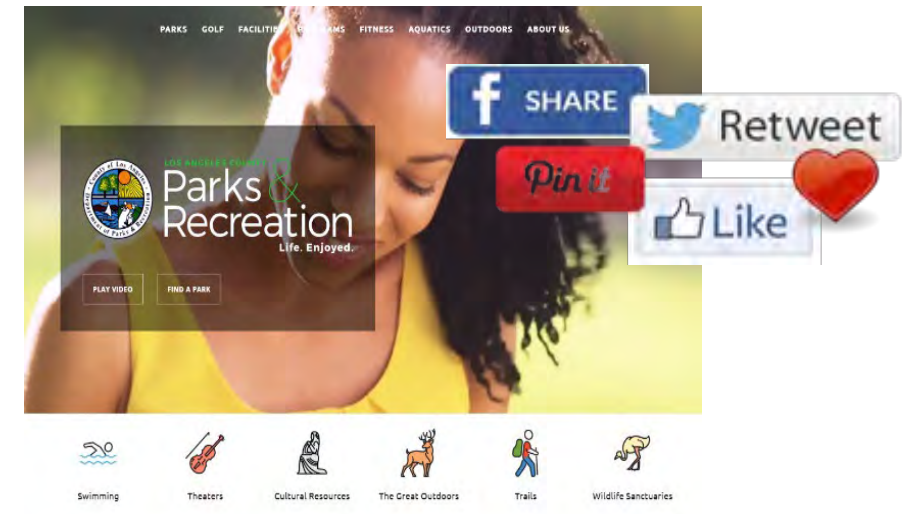
- DPR's program delivery ensures the direct costs of programs are calculated and consistent Department-wide.
- Program, Staff and Service & Supplies (S&S) costs *"must be"* offset by a funding source (NCC, UUT, CDBG, Grants, Program Fees, etc.).
- The pricing model calculates revenues based on the minimum participation required for a program to "go."
- NCC subsidizes staff for park coverage and free and/or affordable core programming (*Everybody Plays, Open Gym, Recreation for All, Everybody Explores, Sports For All Clinics (not league play), Everybody Swims, Swimming Lessons and Aqua Aerobics*).





# CENTRALIZED: PUBLIC INFORMATION & OUTREACH

- Develop county-wide and local community public information campaigns to promote programming
- Develop & implement community engagement plans to promote services with parents, CBOs, schools, churches & key stakeholders.
- Expand hyper-local ethnic media engagement via print, radio, and social media
- Utilize ActiveNet database to promote programs to current and future park users
- Update website to serve as a trusted resource for information, programming and services.
- Create information center hubs at each facility that includes digital program/service displays to information centers

A screenshot of the "Core and Community Program Partnership Application Form". The form has a teal header with the title. Below the header, a paragraph states: "Local Community Organizations who want to provide activities, services, or programs to the local community can be qualified to have access to Department of Parks and Recreation Facilities without any rental fees or at a discounted rate." The form contains a question: "1. Are you a Nonprofit or Not-for-Profit Organization \*", with radio button options for "Yes" and "No". A "Submit" button is at the bottom. At the very bottom, there is a small link: "Never give out your password! Report Abuse".

# CENTRALIZED: WAREHOUSE



Department-wide purchasing and standardization



Allows warehouse staff to provide services and supplies based on need



Realizes purchase discounts from bulk purchases



Streamlines ordering, storage, and distribution processes for warehouse supplies



# CORE AND COMMUNITY PROGRAM PARTNERSHIPS

- No rental fees for qualified Core Program Partners
- Expand and enrich Programming for vulnerable communities
- Increase community organization access to facilities and amenities to provide local programming and services
- Encourage and enable community organizations to provide local programming and services for public benefit
- Discounted rental fees for qualified Community Program Partners for offering affordable, inclusive, and beneficial programming
- Contributions from local community organizations through volunteering, in-kind repairs as well as building and donating capital improvements at park facilities



## SCHOLARSHIP PROGRAM

# Learn to Swim Scholarships



This year, LA County Parks and the American Red Cross, are pleased to introduce the Learn to Swim Scholarship Program for our Winter and Spring swim sessions at our year-round pools. Scholarships are open to children ages 5 to 17 years old.

For more information and assistance with applying, visit or contact our year round facilities Monday thru Friday from 8am-5pm.



# WORKFORCE PATHWAY(S)



**BECOME AN LA COUNTY LIFEGUARD**  
**EARN UP TO \$4000 IN BONUSES!\***

LIFEGUARDING WITH LA COUNTY IS THE PERFECT SUMMER JOB! A FLEXIBLE SCHEDULE THAT PRIORITIZES SCHOOL AND TEACHES LIFELONG SKILLS AS WELL AS A COMPETITIVE SALARY THAT IS WELL ABOVE MINIMUM WAGE. AND NOW, ALL LA COUNTY LIFEGUARDS ARE ELIGIBLE TO EARN UP TO \$4000 IN BONUSES, EVEN NEW HIRES! SIGN UP AT [GOVERNMENTJOBS.COM.CAREERS/LACOUNTY](https://www.governmentjobs.com/careers/lacounty)




**CALLING ALL YOUTH AGES 14 - 24!**

**Work at Your Local LA County Park**

STARTING SEPT. 1 - DEC. 4, 2021  
MONDAY THROUGH FRIDAY 2PM - 7PM  
SATURDAY 9AM - 4PM

NOW HIRING - EARN \$15/HR!  
WORK PERMIT REQUIRED (AGES 17 & YOUNGER)  
FLEXIBLE SCHEDULE AVAILABLE



**WE NEED YOU!**

Starting at **\$15** per hour!  
Starting July 1 - \$15.96 per hour

**Apply TODAY to become a Park Aide!**

Pick from one of the programs below:

<b>Parks After Dark</b> Seasonal Opportunity	<b>Every Body Plays</b> Year Round Opportunity
-------------------------------------------------	---------------------------------------------------

**NO EXPERIENCE NECESSARY!**



**Fun Opportunity?**

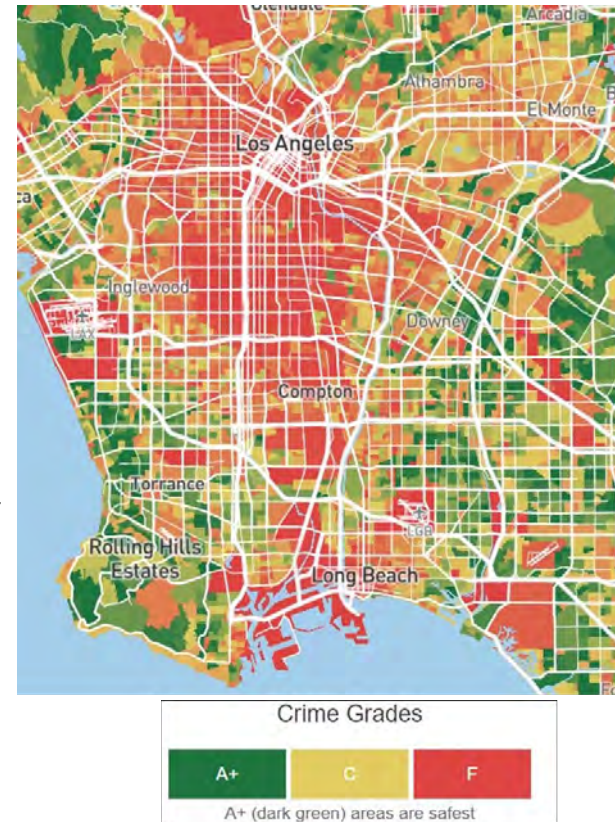
**Apply TODAY to become a Rec Leader!**

Seasonal/Hourly Positions  
**\$15.00 per hour**  
Effective 7/1/2022: Hourly Rate will be \$15.96 to \$19.61

# BUSINESS OPERATION PLAN

In Progress

- Centralization: Business Development
  - Reservations, Rentals and Permits
- Department Training Academy
- Department Volunteer Program
- LA County Parks Foundation
- Community Partnership for Public Safety
- Equity for Pay for Staff Working in High Violence Park Communities
- Strategic Plan



Office of Violence Prevention - County of Los Angeles



A vibrant park scene featuring a large, circular, metallic sculpture with colorful accents (yellow, blue, red) in the background. A red gazebo is visible behind the sculpture. In the foreground, a water splash area with multiple jets is active, creating a misty spray. The ground is covered in a red and yellow safety mat. Several children and adults are present, including a child in a yellow shirt running through the water and a man in a red shirt standing nearby. The text "IT'S PARKS TIME: SUMMER 2022!" is overlaid in large, white, bold letters.

**IT'S PARKS TIME:  
SUMMER 2022!**





# IT'S PARK TIME!

## SOMETHING FOR EVERY BODY

*Explore • Engage • Connect*

Aquatics • Recreational Lake Swim & Boating • Youth & Adult Sports  
Nature Centers • Every Body Plays • Parks After Dark (Concert & Movie Nights)  
Golf • Overnight Camping • Recreation Classes • Our SPOT Teen Program  
Open Gym • Youth Employment • Summer Lunch and Snack Program

[PARKS.LACOUNTY.GOV/SUMMER](https://parks.lacounty.gov/summer)



# ¡ES HORA DE IR AL PARQUE!

## TENEMOS ALGO PARA TODOS

*Explora • Involúcrate • Conéctate*

Deportes Acuáticos • Natación y Pasea en Lancha en el Lago • Deportes para Jóvenes y Adultos • Centros de Naturaleza • Todos Jugamos • Parks After Dark (Noche de Conciertos y Películas) Acampamiento de Noche • Clases de Recreación  
Golf • Gimnasio Abierto • Programa Para Jóvenes "Our SPOT" • Empleos para Jóvenes • Programa de Comida y Bocado de Verano

[PARKS.LACOUNTY.GOV/SUMMER](https://parks.lacounty.gov/summer)



LA County Parks and Recreation



# Splash Pads

Beat the Heat at these LA County Parks

Adventure Park	Magic Johnson Park
Allen Martin Park	Mayberry Park
Alondra Park	Pathfinder Park
Atlantic Park	Pearblossom Park
Bassett Park	Rimgrove Park
Carolyn Rosas Park	San Angelo Park
City Terrace Park	Stephen Sorensen Park
Dalton Park	Sunshine Park
Los Robles Park	Valleydale Park
Washington Avenue Park	



**FREE!**

May 1 - September 30  
10am - 7pm

learn more at [parks.lacounty.gov](https://parks.lacounty.gov)





LOS ANGELES COUNTY DEPARTMENT OF PARKS AND RECREATION PRESENTS

# PARKS AT SUNSET

GREEN SPACES, PHYSICAL ACTIVITY AND SOCIAL CONNECTIONS PLAY A POWERFUL ROLE IN HEALTH, FITNESS AND OVERALL WELLBEING. EVEN THE SIMPLE ACT OF TAKING IN A SUNSET CAN HAVE A POSITIVE IMPACT ON OUR MENTAL HEALTH.

COME FUEL YOUR SOUL BY ATTENDING A FREE DROP-IN ACTIVITY DURING SUNSET AT AN LA COUNTY PARK NEAR YOU. PARKS AT SUNSET FEATURES A VARIETY OF FAMILY-FRIENDLY EXPERIENCES – FROM MEDITATION AND YOGA TO DANCE JAMS AND CANVAS PAINTING. PICK AN EVENING IN MAY AND ENJOY THE HEALING BENEFITS OF BEING PART OF AN OUTDOOR ACTIVITY WITH FRIENDS, FAMILY OR ON YOUR OWN WHILE TAKING IN A BREATHTAKING SUNSET. VISIT [PARKS.LACOUNTY.GOV](https://parks.lacounty.gov) TO LEARN MORE ABOUT ACTIVITIES AND PROGRAMS TO DEVELOP YOUR SELF-CARE PLAN TODAY!

MORE INFO: [WHYWERISE.LA](https://whywerise.la)



**NORTH AGENCY**  
**6:00 PM - 8:00 PM**

**Wednesday, May 11, 2022**

Loma Alta Park (Altadena)

**Thursday, May 19, 2022**

Charles Farnsworth Park (Altadena)

Jackie Robinson Park (Littlerock)

Val Verde Park (Castaic)

**Tuesday, May 24, 2022**

Stephen Sorensen Park (Palmdale)

**Wednesday, May 25, 2022**

Castaic Sports Complex (Castaic)

Dr. Richard H. Rioux Park (Stevenson Ranch)

Dexter Park (Sylmar)

Pearblossom Park (Pearblossom)

**Thursday, May 26, 2022**

Crescenta Valley Park (La Crescenta)

El Cariso Park (Sylmar)

George Lane Park (Lancaster)



**EAST AGENCY**  
**6:00 PM - 8:00 PM**

**Tuesday, May 10, 2022**

City Terrace Park (Los Angeles)

**Thursday, May 12, 2022**

Basset Park (La Puente)

Charter Oak Park (Covina)

Rowland Heights Park (Rowland Heights)

Sunshine Park (La Puente)

**Wednesday, May 18, 2022**

Allen J. Martin Park (La Puente)

**Thursday, May 19, 2022**

Arcadia Park (Arcadia)

Belvedere Park (Los Angeles)

Carolyn Rosas Park (Rowland Heights)

Manzanita Park (Hacienda Heights)

Rimgrove Park (La Puente)

**EAST AGENCY**  
**6:00 PM - 8:00 PM**

**Tuesday, May 24, 2022**

Pamela Park (Duarte)

Pathfinder Park (Rowland Heights)

William Steinmetz Park (Hacienda Heights)

**Wednesday, May 25, 2022**

Saybrook Park (Los Angeles)

**Thursday, May 26, 2022**

Dalton Park (Azusa)

Eugene Obregon Park (Los Angeles)

Hacienda Heights Community & Rec Center  
(Hacienda Heights)

Ruben Salazar Park (Los Angeles)

San Angelo Park (La Puente)

Valleydale Park (Azusa)

Walnut Nature Park (Huntington Park)



**SOUTH AGENCY**  
**6:00 PM - 8:00 PM**

**Tuesday, May 24, 2022**

Bodger Park (Hawthorne)

**Wednesday, May 25, 2022**

Franklin D. Roosevelt Park (Los Angeles)

George Washington Carver Park (Los Angeles)

Ladera Park (Los Angeles)

**Thursday, May 26, 2022**

Athens Park (Los Angeles)

Bethune Park (Los Angeles)

Roy Campanella Park (Compton)

Don Knabe Park (Cerritos)

East Rancho Dominguez Park (Compton)

Lennox Park (Inglewood)

**SOUTH AGENCY**  
**6:00 PM - 8:00 PM**

**Thursday, May 5, 2022**

Mayberry Park (Whittier)

**Wednesday, May 11, 2022**

Amigo Park (Whittier)

Helen Keller Park (Los Angeles)

**Thursday, May 12, 2022**

Adventure Park (Whittier)

Del Aire Park (Hawthorne)

**Tuesday, May 17, 2022**

Alondra Park (Lawndale)

Jesse Owens Park (Los Angeles)

**Thursday, May 19, 2022**

Col. Leon H. Washington Park (Los Angeles)

Earvin Magic Johnson Park (Los Angeles)

Enterprise Park (Los Angeles)

Mona Park (Compton)

Sorensen Park (Whittier)

Ted Watkins Park (Los Angeles)

Victoria Park (Carson)



LA COUNTY PARKS & RECREATION

# EVERY BODY PLAYS



**DROP IN SUMMER ADVENTURES**  
**MONDAY – FRIDAY, 11AM – 4:30PM**  
**JUNE 13 – AUGUST 15**

## REGISTRATION NOT REQUIRED!

Participate in fun summer activities for **FREE** at your local LA County Park!

Join us at Every Body Plays Drop-in Adventure, a safe space where youth can come play, create friendships and partake in activities such as fitness, self-care, sports, arts, games, creative outlets like storytelling and ESTEAM (Environment, Science Technology, Engineering, Arts and Math).

Connect with LA County Parks staff at each location for more information and for assistance. Every Body Plays provides youth ages 7-17 with access to caring and trained park staff who serve as mentors and lead an array of programs and activities. Every day is an adventure in LA County Parks!

Lunch and snack available at select locations. Learn more at [parks.lacounty.gov/snack-program](https://parks.lacounty.gov/snack-program)



EL DEPARTAMENTO DE PARQUES Y RECREACIÓN  
DEL CONDADO DE LOS ANGELES PRESENTA



# TODOS JUGAMOS

**PROGRAMA GRATUITO PARA JÓVENES**  
**LUNES A VIERNES DE 11AM A 4:30 PM**  
**JUNE 13–AUGUST 15**

## ¡NO SE REQUIERE REGISTRO!

¡Participa en divertidas y **GRATUITAS** actividades de verano en tu parque local del Condado de Los Ángeles!

Acompáñanos en Todos Jugamos Aventuras de Verano, un espacio seguro donde los jóvenes pueden venir a jugar, hacer nuevas amistades y participar en actividades de ejercicio, cuidado personal, deportes, artes, juegos, salidas creativas como contar historias y ESTEAM (medio ambiente, ciencia Tecnología, Ingeniería, Artes y Matemáticas).

Todos Jugamos, un espacio positivo enfocado en los jóvenes y diseñado para divertirse.

Comunícate con el personal de Parques del Condado de Los Ángeles en cada ubicación para obtener más información y asistencia. Todos Jugamos, ofrece a los jóvenes de 7 a 17 años acceso al personal del parque quienes actúan como mentores y dirigen una variedad de programas y actividades. ¡Cada día es una aventura en los parques del condado de Los Ángeles!





# FREE SUMMER PROGRAM!

Environment, Science, Technology, Engineering, Art & Math

# ESTEAM

## SUMMER CAMP FOR YOUTH AGES 6-12

The Los Angeles County Department of Parks and Recreation in partnership with the Natural History Museum of Los Angeles County, Beaches and Harbors, and Los Angeles County Public Works are proud to announce the return of ESTEAM camps throughout LA County this summer for five two-week sessions. Campers will connect with the outdoors, explore early career pathways, build their self-confidence and understanding of ESTEAM topics, and learn to take action to improve their natural environment. Curriculum is inclusive and supports the development of school-age youth. ESTEAM provides campers with hands-on learning activities that excites, energizes, and exposes youth to a wide variety of skills and ideas. Children will have fun learning through group games, arts and culture, technology, field trips, guest speakers, and project-based learning. Morning and afternoon snack and lunch is provided at select sites.

### THEME WEEKS & DATES

June 13 - Oceans  
June 27 - Los Angeles  
July 11 - Paleontology  
July 25 - Engineering  
August 8 - Community Science

June 13 - August 19  
Monday - Friday  
9AM - 4PM

### REGISTRATION DEADLINES

Session 1 - May 30  
Session 2 - June 13  
Session 3 - June 27  
Session 4 - July 11  
Session 5 - July 25

**REGISTER TODAY, SPACE IS LIMITED!**  
**RESERVATIONS.LACOUNTY.GOV**

## Camp SITES



Belvedere Park  
4914 E. Cesar Chavez Ave.  
Los Angeles 90022  
(323) 260 2342

Mona Park  
2291 E. 121st St.  
Compton 90222  
(310) 603-3729

Earvin Magic Johnson Park  
905 E. El Segundo Blvd.  
Los Angeles 90059  
(323) 942 8457

Pamela Park  
2236 Goodall Avenue  
Duarte, CA 91010  
(626) 357 1619

El Cariso Park  
13100 Hubbard St.  
Sylmar 91342  
(818) 367 5043

San Angelo Park  
245 S. San Angelo Ave.  
La Puente 91745  
(626) 333 6162

Franklin D. Roosevelt Park  
7600 Graham Ave.  
Los Angeles 90001  
(323) 586 7228

Val Verde Park  
30300 W. Arlington Rd.  
Val Verde 91384  
(661) 257 4014

Loma Alta Park  
3330 N. Lincoln Ave.  
Altadena 91001  
(626) 398 5451

Valleydale Park  
5525 N. Lark Ellen Ave.  
Azusa 91702  
(626) 334 8020



Los Angeles County Supervisor  
**HILDA L. SOLIS**  
First District • One

**HOLLY J. MITCHELL**  
LOS ANGELES COUNTY SUPERVISOR • FOUR DISTRICT



Supervisor Sheila Kuwahara

LOS ANGELES COUNTY SUPERVISOR  
**JANICE HAHN**  
FIFTH DISTRICT



**KATHRYN BARGER**  
LOS ANGELES COUNTY SUPERVISOR • SIXTH DISTRICT



LA COUNTY PARKS & RECREATION

# FREE SUMMER LUNCH & SNACK



## MONDAY–FRIDAY

Lunch: 12:00–1:00PM | Snack: 3:00–4:00 PM  
Summer Only | Year Round  
Ages 18 and under



There is no snack/lunch served  
on County observed holidays.

More info at [parks.lacounty.gov/summerlunch](https://parks.lacounty.gov/summerlunch)

LA COUNTY PARKS & RECREATION

# OUR SPOT

SOCIAL PLACES AND OPPORTUNITIES FOR YOUTH

FREE daily after-school  
activities Monday thru  
Friday from 3PM - 7PM

**GRADES 7 – 12**

Leadership Development  
Positive Youth Development  
Save Haven  
Mentors  
FUN







## PARKS AFTER DARK

- 34 Parks!
- 8 weeks of programming (6/16 – 8/6)
- Thu, Fri, Sat from 6 PM – 10 PM
- Free concerts, movie nights, evening aquatic programming (diving, surf boarding, scuba diving etc.) arts & culture enrichment programming, family activities, wellness programs, sports clinics, fitness & educational classes, games and much more...







**Dodgers  
DREAMTEAM**



**LA INSCRIPCIÓN PARA DODGERS DREAMTEAM ESTÁ ABIERTA PARA NIÑOS Y JÓVENES DE 5 A 18 AÑOS Y ES GRATIS PARA TODOS**

¡Visite [Dodgers.com/dodgersdreamteam](https://Dodgers.com/dodgersdreamteam) para encontrar la ubicación más cercana y registrarse ahora!  
Las divisiones ofrecidas variarán según su localización. Incluye uniformes, equipamiento y mas!

**Dodgers Dreamteam ofrecido en estos parques del condado de Los Ángeles:**

Alondra Park  
Athens Park  
Belvedere Park  
Bethune Park  
Bodger Park  
Campanella Park

Carver Park  
Del Aire Park  
Enterprise Park  
Franklin D. Roosevelt Park  
Helen Keller Park  
Lennox Park  
Mona Park

Obregon Park  
Salazar Park  
Saybrook Park  
Ted Watkins Park  
Victoria Park



@DodgersFoundation  
@LACountyParks

@DodgersFdn  
@LACountyParks

/LosAngelesDodgersFoundation #DodgersDreamTeam  
/Parks.LACounty.gov #LACountyParks



**Dodgers  
DREAMTEAM**



**REGISTRATION FOR DODGERS DREAMTEAM IS NOW OPEN FOR YOUTH AGES 5-18! ONLY \$15 TO REGISTER!**

Visit [Dodgers.com/dodgersdreamteam](https://Dodgers.com/dodgersdreamteam) to find your nearest location and to register!  
Divisions offered will vary by location. Includes uniforms, equipment and more!

**Dodgers Dreamteam offered at these Los Angeles County Parks locations:**

Alondra Park  
Athens Park  
Belvedere Park  
Bethune Park  
Bodger Park  
Campanella Park

Carver Park  
Del Aire Park  
Enterprise Park  
Franklin D. Roosevelt Park  
Helen Keller Park  
Lennox Park  
Mona Park

Obregon Park  
Salazar Park  
Saybrook Park  
Ted Watkins Park  
Victoria Park



@DodgersFoundation  
@LACountyParks

@DodgersFdn  
@LACountyParks

/LosAngelesDodgersFoundation #DodgersDreamTeam  
/Parks.LACounty.gov #LACountyParks





## GOLF IN THE PARK

- Pilot at two parks after school hours
  - San Angelo M/W 4 PM – 6 PM
  - Campanella Tu/Th 4 PM – 6 PM
- Expanding to 8 Parks this summer
- Starting 6/13 for 6-week program



# LAKE SWIM BEACHES

Castaic State Recreation Area  
Bonelli Regional Park  
Santa Fe Dam Recreation  
Area

- Weekends only: 5/21 – 6/19
  - \*Santa Fe Dam opens 5/28
- Open 7 days: 6/20 – 9/5
- Closes 9/6/22
- Hours: 10 AM – 6 PM










# POOL EXTENDED SEASON

- 6/11 – 8/20 & 8/29 – 9/24
- Monday thru Saturday
- 38 pools @ 28 sites
- Programs
  - Every Body Swims
  - Aqua Aerobics
  - Lap Swim
  - Swimming Lessons



LA COUNTY PARKS & RECREATION PRESENTS



## FREE MORNING AQUATIC EXERCISE & LAP SWIM

**FOR SENIORS 65+ AND PERSONS WITH DISABILITIES**

With Aquatic Exercise classes, participants get a great instructor-led workout without the impact on your body that traditional aerobics classes can create.

The Department of Parks and Recreation is offering a pilot program starting December 1st until June 30th, 2022 where Seniors (65+) and Persons with Disabilities can join Aquatic Exercise Classes and Morning Lap Swim for FREE!

All COVID-19 safety guidelines are fully adhered to and participants must pre-register.

**SIGN UP TODAY:**  
[reservations.lacounty.gov](https://reservations.lacounty.gov)

#ItsParkTime
@LACountyParks
@LACountyParks
@LACountyParks
@LACountyParks
@LACountyParks

LA COUNTY PARKS & RECREATION PRESENTS

## FREE AQUATIC EXERCISE & MORNING LAP SWIM

December 1, 2021 - June 30, 2022

**BELVEDERE COMMUNITY REGIONAL PARK**  
 4914 EAST CESAR E CHAVEZ AVE,  
 LOS ANGELES, CA 90022

**CASTAIC REG. SPORTS COMPLEX POOL**  
 31350 CASTAIC RD,  
 CASTAIC, CA 91384

**SAN FERNANDO POOL**  
 300 PARK AVE,  
 SAN FERNANDO, CA 91340

**JESSE OWENS COMMUNITY REGIONAL PARK POOL**  
 9651 S WESTERN AVE,  
 LOS ANGELES, CA 90047

**FRANKLIN D. ROOSEVELT PARK POOL**  
 7600 GRAHAM AVE,  
 LOS ANGELES, CA 90001

**SIGN UP TODAY:**  
[reservations.lacounty.gov](https://reservations.lacounty.gov)

#ItsParkTime
@LACountyParks
@LACountyParks
@LACountyParks
@LACountyParks
@LACountyParks




**DIVE IN THIS SUMMER!**

# LA COUNTY AQUATICS







**NOW OFFERING:**

- ADULT WATER EXERCISE
- EVERY BODY SWIMS
- NOVICE SPORTS
- LEARN TO SWIM

\*OFFERINGS MAY VARY BY LOCATION. CONTACT YOUR LOCAL POOL FOR MORE INFORMATION

Beat the heat this summer with LA County Parks! This summer, our over 30+ pools are returning with a variety of fun and engaging programming for you and the entire family. Learn a new sport with our youth novice teams, get moving with Adult Water Exercise or just come by to cool off during Every Body Swims or our many splash pads! No matter what you're looking for this summer, LA County Parks has got you covered!

**SUMMER SEASON BEGINS JUNE 13**

[parks.lacounty.gov/aquatics](https://parks.lacounty.gov/aquatics)

#ItsParkTime
@LACountyParks
@LACountyParks
@LACountyParks
@LACountyParks
@LACountyParks



COUNTY OF LOS ANGELES   PARKS AND RECREATION

# Overnight FAMILY CAMPING



**FRIDAYS • JUNE 24 • JULY 22 • AUG 26**

 STARTING AT 6:00PM | **\$10** GENERAL ADMISSION | **FREE** KIDS 12 & UNDER

**SANTA FE DAM REGIONAL PARK**  
13801 E. 148TH HWY IRVINE, CA 92704  
MORE INFO AT 926-334-1046 OR WWW.PARKS.LACOUNTY.GOV

COUNTY OF LOS ANGELES   PARKS AND RECREATION

# Overnight FAMILY CAMPING



**FRIDAYS • JUNE 24 • JULY 22 • AUG 26**

 STARTING AT 6:00PM | **\$10** GENERAL ADMISSION | **FREE** KIDS 12 & UNDER

**KENNETH HAHN STATE RECREATION AREA**  
4100 S. LA CIENEGA BLVD LOS ANGELES, CA 90056  
MORE INFO AT 323-298-3660 OR WWW.PARKS.LACOUNTY.GOV

COUNTY OF LOS ANGELES   PARKS AND RECREATION

# Overnight FAMILY CAMPING



**FRIDAYS • JUNE 24 • JULY 22 • AUG 26**

 STARTING AT 6:00PM | **\$10** GENERAL ADMISSION | **FREE** KIDS 12 & UNDER

**FRANK G. BONELLI REGIONAL PARK**  
150 E. 714 YERDES DR SAN DIMAS, CA 91773  
MORE INFO AT 909-597-8411 OR WWW.PARKS.LACOUNTY.GOV

COUNTY OF LOS ANGELES   PARKS AND RECREATION

# Overnight FAMILY CAMPING



**FRIDAYS • JUNE 24 • JULY 22 • AUG 26**

 STARTING AT 6:00PM | **\$10** GENERAL ADMISSION | **FREE** KIDS 12 & UNDER

**CASTAIC LAKE STATE RECREATION AREA**  
53180 CASTAIC PK CASTAIC, CA 91354  
MORE INFO AT 805-257-4090 OR WWW.PARKS.LACOUNTY.GOV

COUNTY OF LOS ANGELES   PARKS AND RECREATION

# Overnight FAMILY CAMPING



**FRIDAYS • JUNE 24 • JULY 22 • AUG 26**

 STARTING AT 6:00PM | **\$10** GENERAL ADMISSION | **FREE** KIDS 12 & UNDER

**WHITTIER NARROWS RECREATION AREA**  
780 S. SANTA ANITA AVE BL MONTE, CA 91731  
MORE INFO AT 626-575-5326 OR WWW.PARKS.LACOUNTY.GOV

L.A. County Parks Natural Areas

# NATURE CENTER DISCOVERY



## FREE WEEKLY PROGRAM

Join us Saturday mornings for a meet and greet with a Natural Areas Superintendents! Learn more about your nature center, ask questions and find out fun ways to make the most of your visit!

**EVERY SATURDAY  
10:00AM & NOON**

AT THESE L.A. COUNTY NATURE CENTERS:

Deane Dana Friendship Park

Eaton Canyon Natural Area

Placerita Canyon Nature Center

San Dimas Canyon Nature Center

Stoneview Nature Center

Vasquez Rocks Natural Area

Whittier Narrows Nature Center

**VISIT [PARKS.LACOUNTY.GOV](https://parks.lacounty.gov) TO LEARN MORE!**



LA COUNTY PARKS & RECREATION PRESENTS

# EVERY BODY EXPLORES

The Every Body Explores program provides participants of all ages an opportunity to check out a Naturalist field backpack they can use to complete self-guided activities, make observations & explore the park!

Check out a Naturalist backpack at a Nature Center near you!

**TUESDAY - FRIDAY**  
**2:30PM - 5:30PM**

**SATURDAY**  
**10:00AM - 1:30PM**



Backpacks include  
exploration equipment,  
activity guides & safety info



## EVERY BODY EXPLORES

CURRENTLY OFFERED AT THESE LOCATIONS:

### EATON CANYON NATURE CENTER

1750 North Altadena Dr  
Pasadena, CA 91107  
(909) 599-7512

### VASQUEZ ROCKS NATURAL AREA

10700 W. Escondido Rd  
Agua Dulce, CA 91390  
(661) 268-0840

### SAN DIMAS CANYON NATURE CENTER

1628 Sycamore Canyon Rd  
San Dimas, CA 91773  
(909) 599-7512

### PLACERITA CANYON NATURE CENTER

19152 Placerita Canyon Rd  
Newhall, CA 91321  
(661) 259-7721

### WHITTIER NARROWS NATURE CENTER

1000 S. Durfee Ave  
South El Monte, CA 91733  
(626) 575-5523

### STONEVIEW NATURE CENTER

5950 Stoneview Dr  
Culver City, CA 90232  
(310) 202-3002

### DEANE DANA FRIENDSHIP PARK NATURE CENTER

1805 West 9th St  
San Pedro, CA 90732  
(310) 519-6115

#LACountyParks



@LACountyParks



@parks.lacounty.gov



parks.lacounty.gov



LA COUNTY PARKS & RECREATION PRESENTS



# YOUNG NATURALIST AFTER SCHOOL CLUB

ACTIVITIES INCLUDE GROUP GAMES, STEM, NATURE HIKES  
AND NATURAL HISTORY LEARNING OPPORTUNITIES. THE  
PROGRAM IS DESIGNED FOR YOUTH TO ENGAGE IN  
TEAMWORK, MAKE NEW FRIENDS, BUILD SELF CONFIDENCE  
AND GAIN AN APPRECIATION FOR THE NATURAL WORLD.



**DATES:** MARCH 1, 2022 - MAY 19, 2022  
**TIMES:** TUESDAYS - THURSDAYS / 3PM - 5PM  
**AGE GROUPS:** 3RD - 5TH GRADE  
**FEE:** \$29 PER WEEK

**REGISTER TODAY!**  
**RESERVATIONS.LACOUNTY.GOV**



#LACountyParks @LACountyParks @parks.lacounty.gov parks.lacounty.gov

LA COUNTY PARKS & RECREATION PRESENTS



# YOUNG NATURALIST AFTER SCHOOL CLUB



CURRENTLY OFFERED AT THESE  
NATURAL AREAS AND NATURE CENTERS:

## EATON CANYON NATURE CENTER

1750 North Altadena Dr  
Pasadena, CA 91107  
(909) 599-7512

## VASQUEZ ROCKS NATURAL AREA

10700 W. Escondido Rd  
Agua Dulce, CA 91390  
(661) 268-0840

## SAN DIMAS CANYON NATURE CENTER

1628 Sycamore Canyon Rd  
San Dimas, CA 91773  
(909) 599-7512

## PLACERITA CANYON NATURE CENTER

19152 Placerita Canyon Rd  
Newhall, CA 91321  
(661) 259-7721

## STONEVIEW NATURE CENTER

5950 Stoneview Dr  
Culver City, CA 90232  
(310) 202-3002

## WHITTIER NARROWS NATURE CENTER

1000 S. Durfee Ave  
South El Monte, CA 91733  
(626) 575-5523

## DEANE DANA FRIENDSHIP PARK & NATURE CENTER

1805 West 9th St  
San Pedro, CA 90732  
(310) 519-6115

**REGISTER TODAY!**  
**RESERVATIONS.LACOUNTY.GOV**



#LACountyParks @LACountyParks @parks.lacounty.gov parks.lacounty.gov





LA COUNTY PARKS & RECREATION PRESENTS



# SUMMER NATURE TEEN CAMP

**AT DEAN DANA FRIENDSHIP PARK**  
**1805 W. 9TH ST SAN PEDRO, CA 90732**  
**310-519-6115**

Summer Nature Teen Camp provides an opportunity for outdoor adventure, stewardship, and exploration for teens and preteens.

During days of exploration, participants will connect deeply with their environment, others, and themselves through hiking adventures, cultural arts, natural history, leadership as stewards and conservation. Weekly field trips take our participants from the beach to the mountains and everywhere in between to hike, learn and explore.

Adventures are balanced with projects, personal and group reflection, stories, and hands-on exploration.

**DATES: JUNE 13- AUGUST 5, 2022**  
**TIMES: MONDAY-FRIDAY/9AM - 3PM**  
**AGES: 11 - 17 YEARS OLD**  
**FEE: \$100 PER WEEK**

**REGISTER TODAY!**  
**RESERVATIONS.LACOUNTY.GOV**

#LACountyParks    @LACountyParks  @parks.lacounty.gov  parks.lacounty.gov



LA COUNTY PARKS & RECREATION PRESENTS



# SUMMER NATURE CAMP

## AT STONEVIEW NATURE CENTER

5950 Stoneview Drive, Culver City, 90232  
(310) 202-3002 | stoneview@parks.lacounty.gov



Activities and themes include nature-based crafts and games, hiking, cultural arts, natural history, and conservation.

Nature Camp promotes positive youth development by providing access to caring staff, who lead experiences designed for mental well-being, socialization and leadership.

**SESSION 1: JUNE 14-17**  
**SESSION 2: JULY 12-16**  
**SESSION 3: AUG 2-5**

**TIMES:**  
**TUESDAY - FRIDAY / 9AM - 4PM**

**AGES:**  
**7-12 YEARS OLD**

**FEE:**  
**\$210 PER WEEK**

**REGISTER TODAY!**  
**RESERVATIONS.LACOUNTY.GOV**



#LACountyParks    @LACountyParks  @parks.lacounty.gov  parks.lacounty.gov





LA COUNTY PARKS & RECREATION PRESENTS



# SUMMER NATURE CAMP HALF DAY

Half Day Camps provide an opportunity for school-age children to explore various themes related to nature, hiking, cultural arts and natural history, and conservation. Activities promote positive youth development by providing access to caring staff that lead experiences designed to promote physical and mental well-being, socialization and leadership.

## DATES:

**VARIES PER NATURE CENTER**

## TIMES:

**TUESDAY-FRIDAY/9AM - 12PM**

## AGES:

**7 - 12 YEARS OLD**

## FEE:

**\$110 PER WEEK**

**REGISTER TODAY!**

**RESERVATIONS.LACOUNTY.GOV**

#LACountyParks @LACountyParks @parks.lacounty.gov parks.lacounty.gov



LA COUNTY PARKS & RECREATION PRESENTS



# SUMMER NATURE CAMP HALF DAY

CURRENTLY OFFERED AT THESE  
NATURAL AREAS AND NATURE CENTERS:

## EATON CANYON NATURE CENTER

**July 19 - July 22, 2022**

1750 North Altadena Dr  
Pasadena, CA 91107  
(909) 599-7512

## PLACERITA CANYON NATURE CENTER

**June 14 - June 17, 2022  
June 21 - June 24, 2022**

19152 Placerita Canyon Rd  
Newhall, CA 91321  
(661) 259-7721

## VASQUEZ ROCKS NATURAL AREA

**June 14 - June 17, 2022**

10700 W. Escondido Rd  
Agua Dulce, CA 91390  
(661) 268-0840

## WHITTIER NARROWS NATURE CENTER

**June 21-June 24, 2022  
July 12-July 15, 2022**

1000 S. Durfee Ave  
South El Monte, CA 91733  
(909) 228-3900

## SAN DIMAS CANYON NATURE CENTER

**June 14-June 17, 2022  
June 21-June 24, 2022  
June 27 - July 1, 2022**

1628 Sycamore Canyon Rd  
San Dimas, CA 91773  
(909) 599-7512

#LACountyParks @LACountyParks @parks.lacounty.gov parks.lacounty.gov





LA COUNTY PARKS & RECREATION PRESENTS



# NATURE KNOWLEDGE NIGHTS

Spend an evening getting to know the beauty of the natural world at a Los Angeles County Nature Center. Activities vary based on topic but may include group activities, ESTEAM fundamentals, community science, nature hikes, guided tours or animal ambassador experience.

**SESSION:** May 1 - August 31, 2022

**DATES:** Varies per Nature Center

**TIMES:** 6:00pm-7:00pm

**AGE GROUPS:** All Ages

**FEE:** Free

**NO REGISTRATION REQUIRED**

#LACountyParks @LACountyParks @parks.lacounty.gov parks.lacounty.gov



LA COUNTY PARKS & RECREATION PRESENTS



# NATURE KNOWLEDGE NIGHTS

CURRENTLY OFFERED AT THESE NATURAL AREAS AND NATURE CENTERS:

## EATON CANYON NATURE CENTER

Tuesday, Thursday & Saturday  
1750 North Altadena Dr  
Pasadena, CA 91107  
(909) 599-7512

## PLACERITA CANYON NATURE CENTER

Tuesday, Thursday & Saturday  
19152 Placerita Canyon Rd  
Newhall, CA 91321  
(661) 259-7721

## VASQUEZ ROCKS NATURAL AREA

Wednesday, Friday & Saturday  
10700 W. Escondido Rd  
Agua Dulce, CA 91390  
(661) 268-0840

## STONEVIEW NATURE CENTER

Wednesday, Friday & Saturday  
5950 Stoneview Dr  
Culver City, CA 90232  
(310) 202-3002

## SAN DIMAS CANYON NATURE CENTER

Tuesday, Thursday & Saturday  
1628 N. Sycamore Canyon Rd  
San Dimas, CA 91773  
(909) 599-7512

## WHITTIER NARROWS NATURE CENTER

Wednesday, Friday & Sunday  
1000 S. Durfee Ave  
South El Monte, CA 91733  
(909) 228-3900

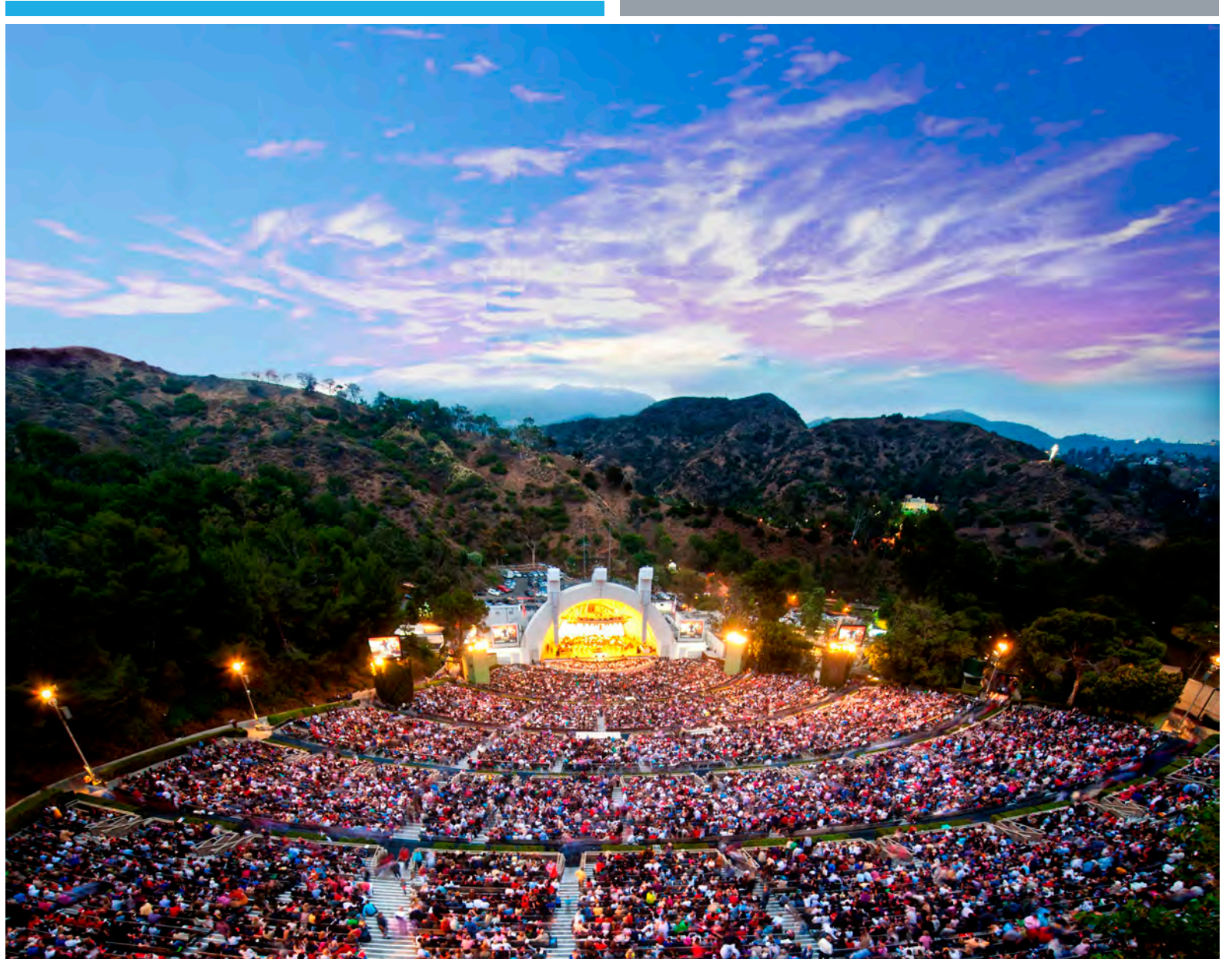
## DEANE DANA FRIENDSHIP PARK & NATURE CENTER

Tuesday, Thursday & Saturday  
1805 West 9th St  
San Pedro, CA 90732  
(310) 519-6115



# HOLLYWOOD BOWL PARK ACCESS PROGRAM

- Contributes to diversity, equity, and inclusion programming
- 2 opportunities for each Our Spot (Teen) Program and Senior Program to attend free concert this summer
- 800+ tickets to youth and Seniors
- Transportation and snacks provided by DPR







# HOLLYWOOD BOWL AND FORD SEASON

## Hollywood Bowl

- Opening Night on June 3rd
- 70+ LA Philharmonic Concerts and 38 Leased Concerts this summer!

## The Ford

- Opening Night FREE 101 festival on June 12th.
- 40+ Concerts this summer!

Register now!



# SUMMER CLASSES



LA County Parks has a class for everyone! Whether you're taking up a new hobby, learning a new skill or being more active, join us this summer at a class near you!

In-person and virtual classes for all ages start **May 30, 2022**. Registration is on a rolling basis.

- Arts and Culture
- Computers and Technology
- Exercise and Fitness
- Health and Wellness
- Martial Arts
- Performing Arts, Music & Dance
- Special Interest
- Sports



Find a class and register online at:  
[parks.lacounty.gov/summerclasses](https://parks.lacounty.gov/summerclasses)



#LearnSomethingNew at #LACountyParks  
@parks.lacounty.gov @LACountyParks

Over 300+  
Classes  
taught by  
200+  
Community  
Instructors  
taking place  
at Parks this  
summer!

¡Regístrate Ahora!



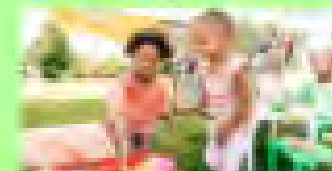
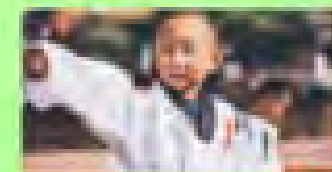
# CLASES DE VERANO



¡El Departamento de Parques y Recreación de Los Angeles tiene una clase para todos! Ya sea que esté tomando un nuevo pasatiempo, aprendiendo una nueva habilidad o simplemente quiere estar más activo, ¡Únase a nosotros este verano en una clase cerca de usted!

Las clases presenciales y virtuales para todas las edades comienzan el 30 de mayo de 2022. El registro es continuo.

- Arte y Cultura
- Computadoras y Tecnología
- Ejercicio y Entrenamiento
- Salud y Bienestar
- Artes Marciales
- Artes Escénicas, Música y Danza
- Intereses Especiales
- Deportes



Encontrar una clase y registrarse en línea en:  
[parks.lacounty.gov/summerclasses](https://parks.lacounty.gov/summerclasses)



#LearnSomethingNew at #LACountyParks  
@parks.lacounty.gov @LACountyParks



# BOTANICAL GARDENS & ARBORETUM ACCESS PROGRAM

- Open to youth 13-18
- EBT card holders
- Free 3rd Tuesday
- Memorial Day to Labor Day:
  - Youth 13 to 18
  - Veteran
  - Teachers

**ARBORETUM MEMBERS**  
**FAMILY BIKE NIGHT**  
**FRIDAY, MAY 13 5PM - 8PM**  
Adults \$3; Children (2-17) \$2; Children under 2 FREE  
Advance registration required at [arboretum.org](http://arboretum.org)

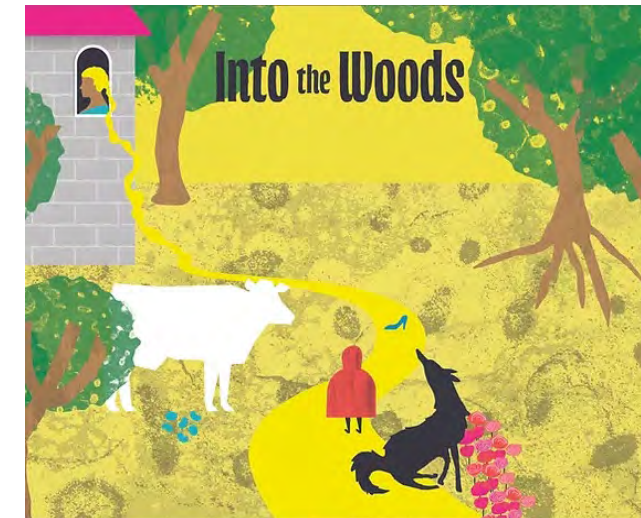
ENJOY THE ARBORETUM AT A DIFFERENT PACE DURING OUR FAMILY BIKE NIGHT!  
PLEASE BRING YOUR RSVP TICKET (PHONE OR PRINT-OUT) AND SIGNED WAIVER!  
Bring your bikes and helmets along with your blankets and picnic-style dinner (no alcohol).  
Snack foods will be available for purchase from the Peacock Cafe.  
Enjoy music and games courtesy of Dance Syndicate Entertainment.  
Visit the REI Arcadia pop up booth!  
Have your cameras ready for a photo scavenger hunt!  
All participants will go through a brief orientation upon entrance.

NOT A MEMBER?  
JOIN ONLINE TODAY!  
[WWW.ARBORETUM.ORG](http://WWW.ARBORETUM.ORG)

**RULES OF THE ROAD**

- ALL PARTICIPANTS MUST SIGN WAIVER
- BIKE HELMETS AND CLOSED-TOE SHOES ARE MANDATORY
- STAY IN THE DESIGNATED AREAS
- EVERYONE RIDES COUNTER-CLOCKWISE
- SLOWER CYCLISTS STAY TO THE RIGHT
- 5 MPH SPEED LIMIT, RACING IS PROHIBITED
- CHILDREN UNDER THE AGE OF 4 MUST RIDE WITH AN ADULT
- RESPECT THE WILDLIFE
- HUMAN-POWERED BIKES ONLY; NO ELECTRIC OR MOTORIZED BIKES
- NO SKATEBOARDS OR ROLLER SKATES

The Arboretum  
THE ARBORETUM IS A CITY-OWNED BOTANICAL GARDEN  
A MEMBERSHIP-OPERATED PUBLIC GARDEN  
301 NORTH BALDWIN AVENUE, ARCADIA, CA 91007 • [WWW.ARBORETUM.ORG](http://WWW.ARBORETUM.ORG) • CALL THE MEMBERSHIP OFFICE FOR DETAILS 626.921.3233





MAY 6 - SEPTEMBER 2

FRIDAY • SATURDAY • SUNDAY

★ BOAT ★  
CINEMA



LAKE CASTAIG



RACK BROCHURE





---

**Parks  
Make  
Life  
Better!**®

*\*Every Summer!*

# Overview of Newhall Ranch aka Valencia

A master planned community by FivePoint in Valencia, CA

Community Services Cluster – May 4, 2022

LA COUNTY DEPARTMENT OF REGIONAL PLANNING





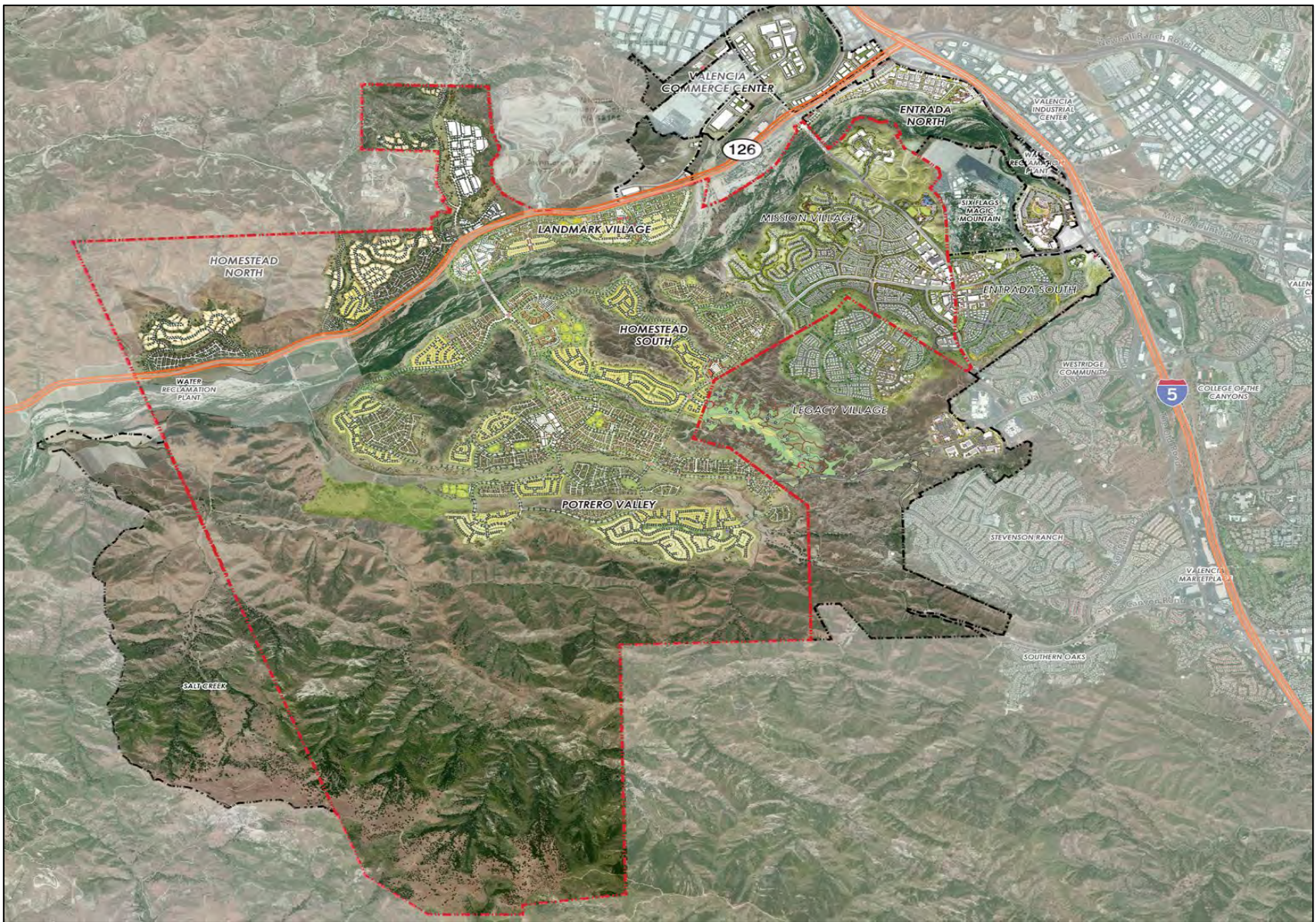
# Newhall Ranch Specific Plan

---

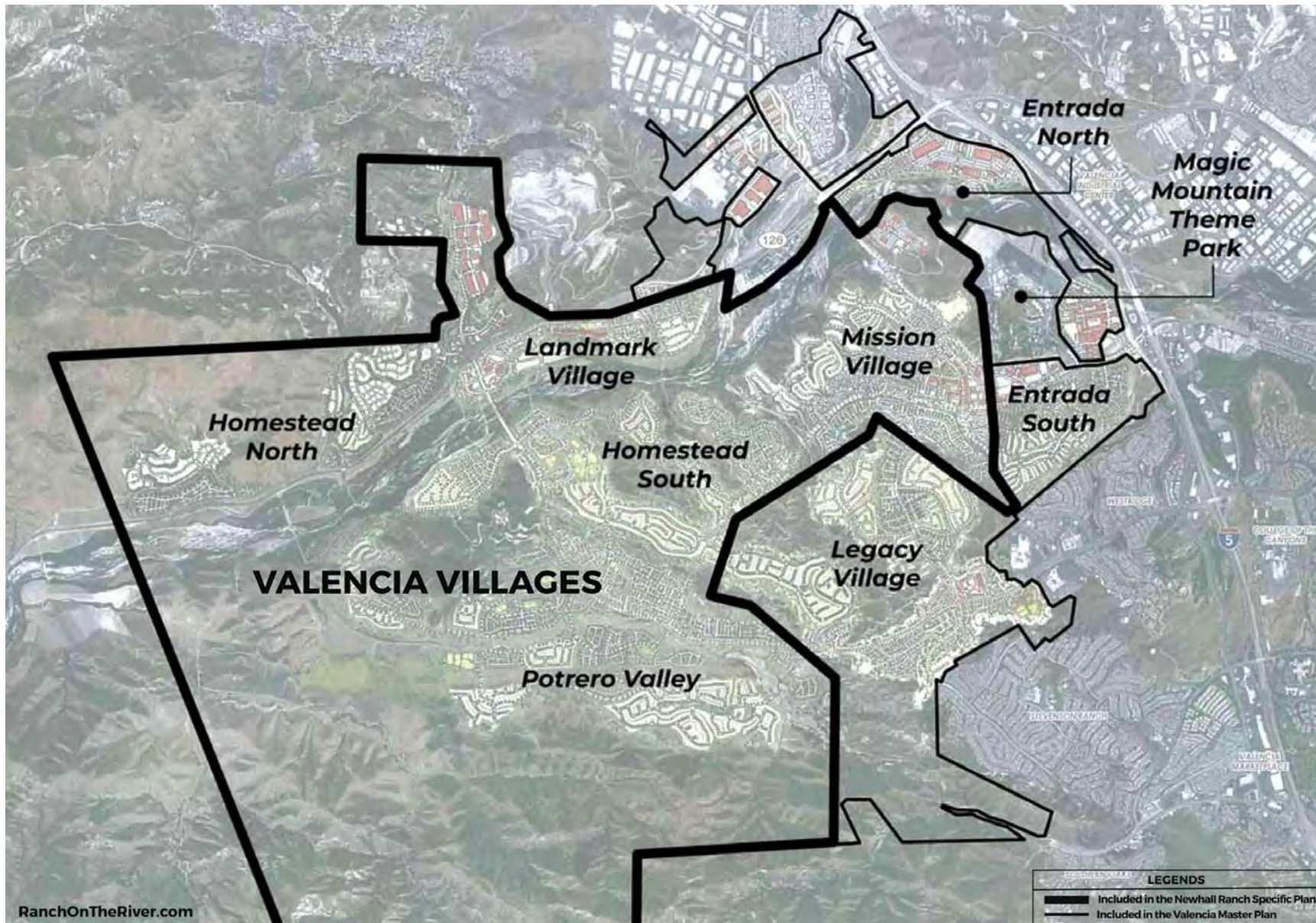
- Adopted in 2003; covers almost 12,000 acres
- Litigation concluded 2017 & 2020; site grading commenced 2018.
- Includes 5 of the 8 Villages:  
Mission, Landmark, Potrero Valley, Homestead North and Homestead South (does not include Entrada North, Entrada South, or Legacy)
- Development Plan proposes:  
20,885 dwelling units; commercial and mixed uses; 5,159 acres of permanent open space; 141 acres of community parks and 10 acres of neighborhood parks; fire stations, library, schools and other infrastructure. [https://planning.lacounty.gov/view/newhall\\_ranch\\_specific\\_plan](https://planning.lacounty.gov/view/newhall_ranch_specific_plan)











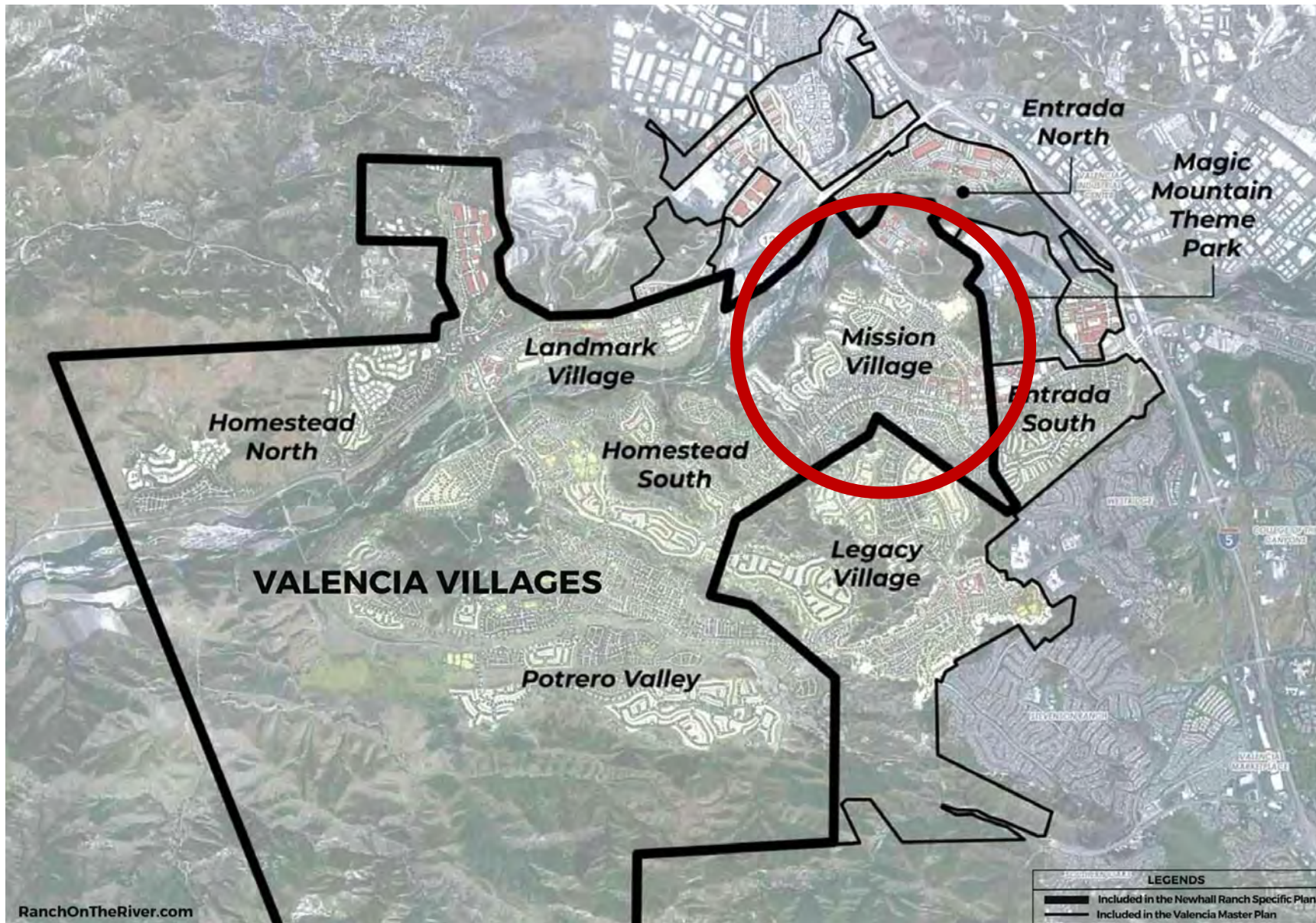
# Phase 1: Mission Village

---

- Multiple merchant builders constructing various product types in 40+ phased Final Maps.
- Approximately 900 dwelling units built or under construction.
- Approximately 200 new families have already moved in!
- Confluence Park opened.
- Community Facilities District No. 2021-01/-02 authorized by BOS in early 2021 – reimburses FivePoint for significant infrastructure investments and County for portion of maintenance costs associated with infrastructure.









# Mission Village Backbone Infrastructure



LA COUNTY DEPARTMENT OF REGIONAL PLANNING







KB Homes (attached townhomes – low \$700,000's) & Lennar (SFR detached (\$900,000-\$1.2 mil)





Lennar at Siena (single family detached homes - selling for low \$900,000's)



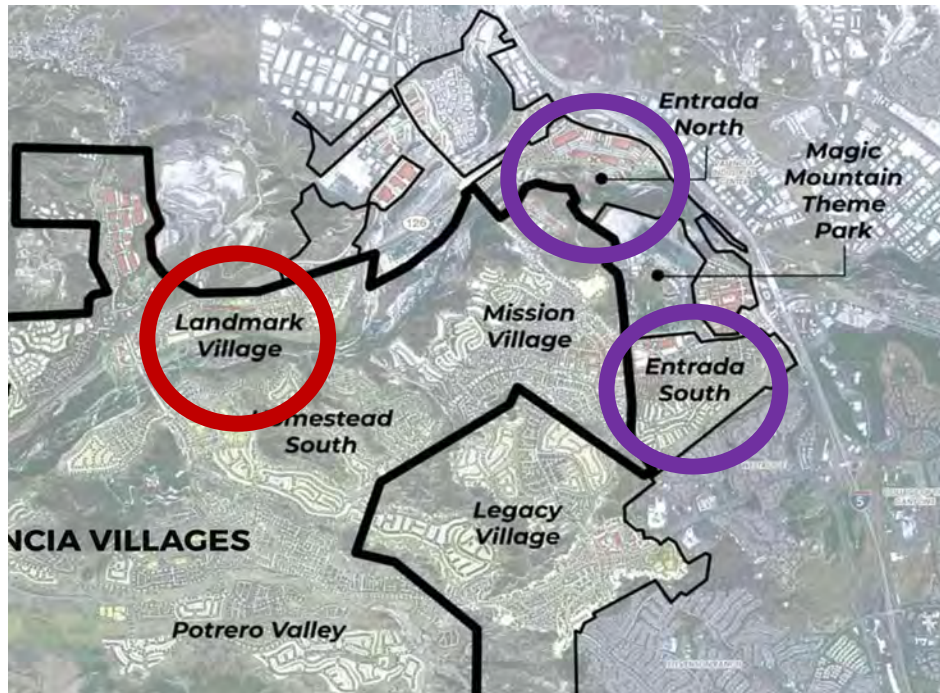


**Confluence Park: Private open space for community; includes community center, pool, spa, playground, etc.**





# What's Next?



Mission Village: build out continues through 2025

Landmark Village: process Final Maps; commence construction (2025+)

Monitor development triggers for public parks, library and first fire station (2023 - 2026)

Entrada South/VCC – circulate Draft EIR, negotiate Development Agreement, process entitlements (through 2023)



# Challenges

---

- Full build out of project expected to take 20+ years – requires ongoing significant staff resources across multiple departments.
- Maintenance and programming for public parks - underfunded or non-existent
- Add'l County needs – permanent staff for parks, library, fire stations; comprehensive affordable housing program; DPW maintenance yard; Old Road construction underfunded



# Successes

---

- Addition of much needed housing resources near major employment center
- Highly efficient, net zero carbon community.
- Sustainability embedded throughout: open space preservation; offsite forest carbon sequestration; on and offsite EV charging stations; hyper-efficient building designs; water efficiency and conservation; onsite transportation mgmt. plan including NEVs.





# THANK YOU to our partners!

---

- Example of coordinated development process: significant collaboration between DRP, DPW, Library, Parks, Fire, Public Health, TTC, Sanitary District, CoCo & SD 5.

