

Caring for Our Coast: Climate Resiliency

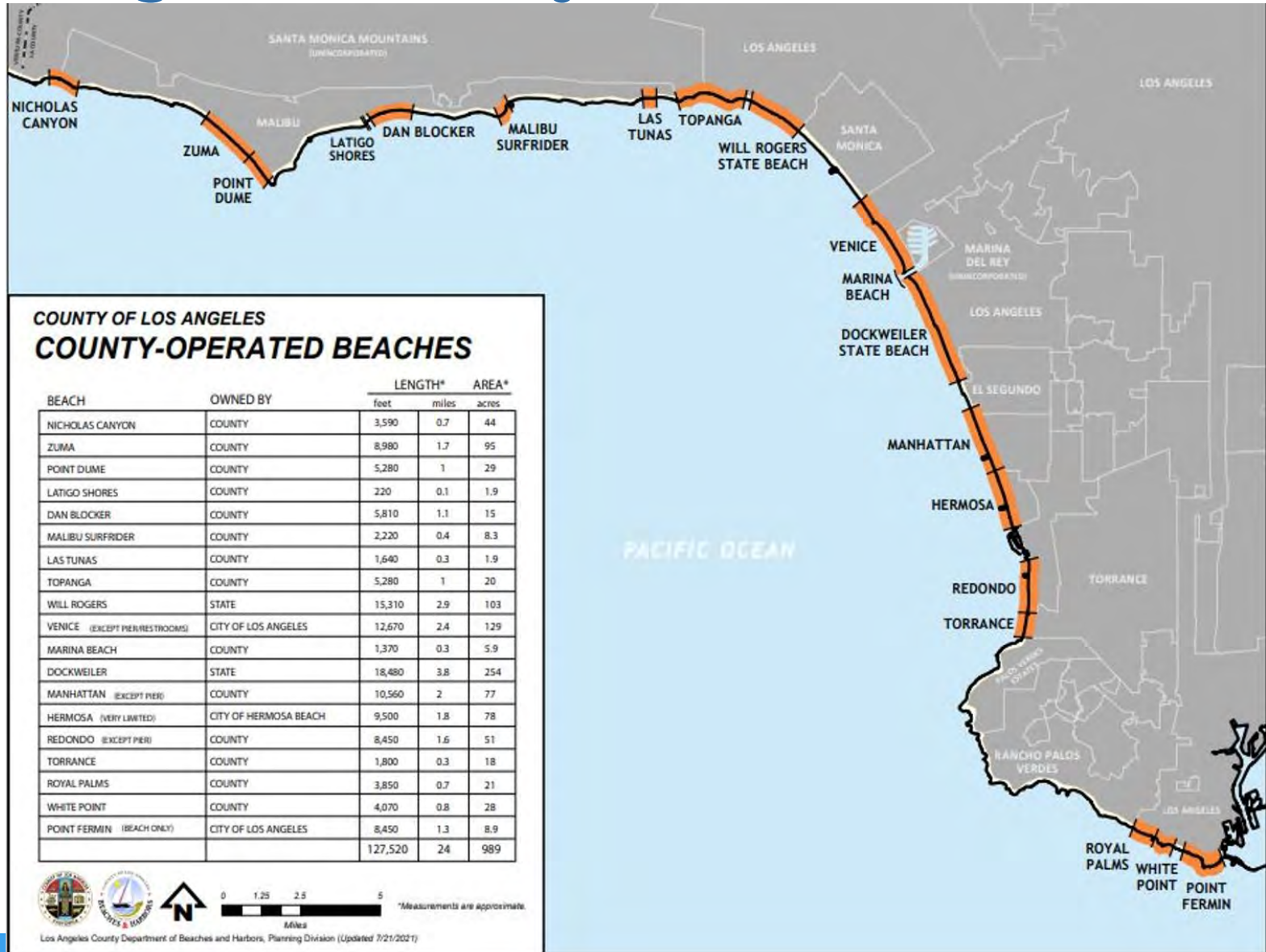


LOS ANGELES COUNTY
DEPARTMENT OF BEACHES & HARBORS

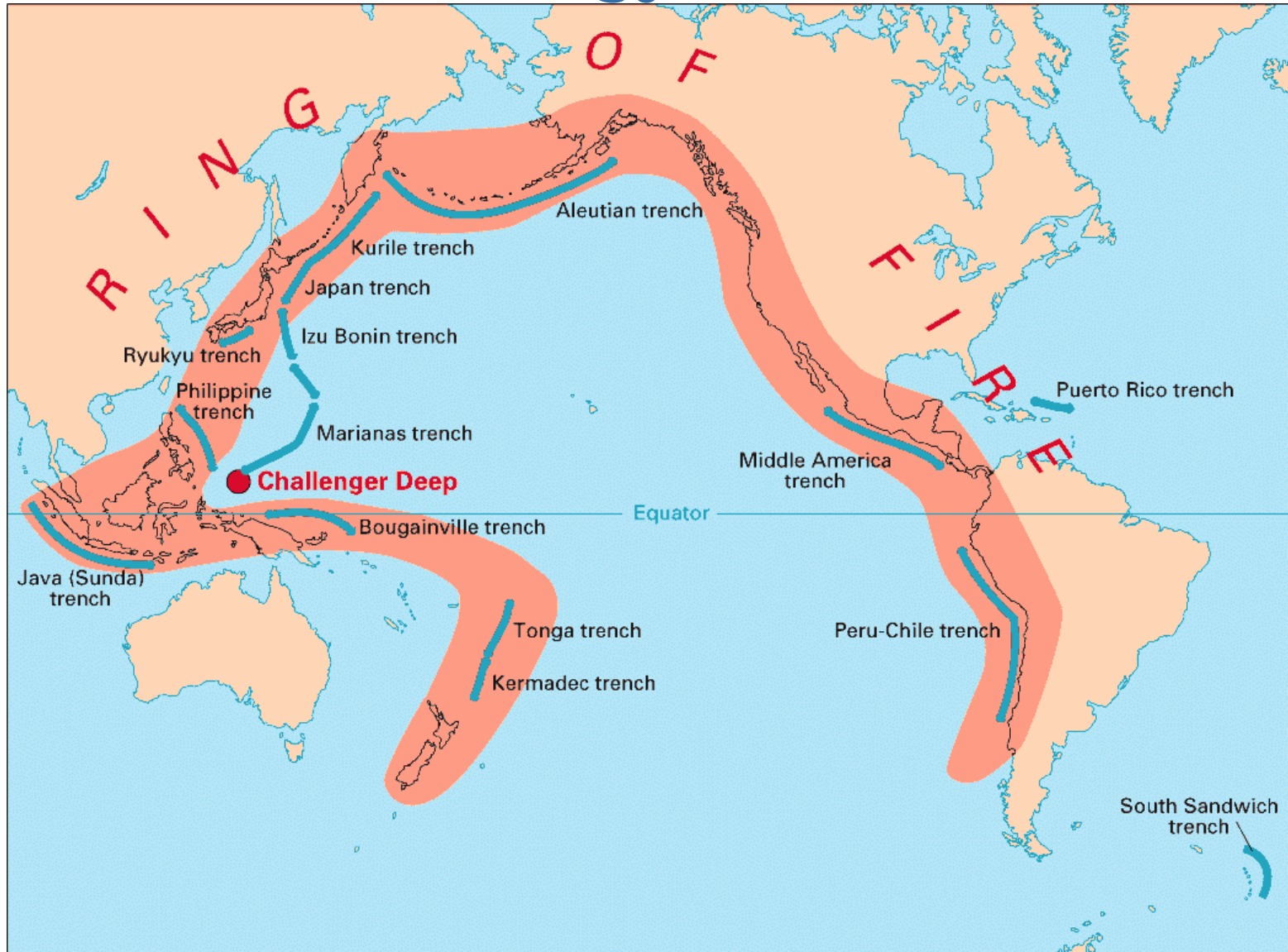
An aerial photograph of a coastal area. On the left, the ocean waves are breaking onto a sandy beach. Below the beach is a rocky shoreline. To the right of the rocks is a sandy area with some sparse vegetation. Further right is a path or road with more dense coastal plants. The text is overlaid on the sandy area.

Coastal resilience means **building the ability of a community to "bounce back"** after hazardous events such as **hurricanes, coastal storms, and flooding** – rather than simply reacting to impacts.

Los Angeles County's Coastline



Pacific Basin Geology



Coastal Regions



NORTH



CENTRAL



SOUTH

Coastal Assets

Beaches & Open Space

- 19 beach facilities
- 24 miles of coastline
- Approx. 992 acres of open space

In 2014, over 65 million visitors came to the beach. With the County's population expected to double by 2100, demand for beach recreation is anticipated to similarly increase.

Facilities & Amenities

Access

- Parking lots
- Beach bike path
- Beach accessways, ramps, staircases

Amenities

- Restroom buildings
- Concession buildings

Safety and Operations

- Lifeguard safety stations
- Maintenance yards
- Utilities (pump stations, septic systems, waterlines, underground fuel tanks, etc.)

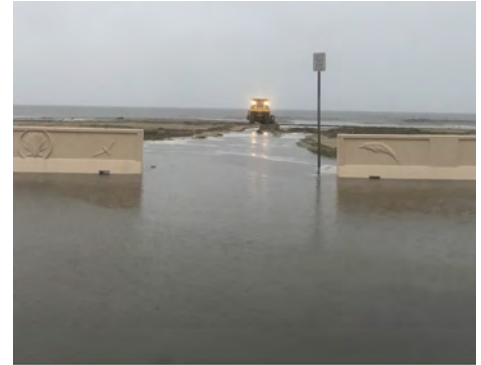
Coastal Management



Ongoing Challenges: Erosion, Flooding, Storm Events



Surfrider Adamson House Historic Wall 6/7/2019



Zuma/Pt Dume Rain Event 12/6/2018

Erosion Hotspots: PCH/South Topanga



PCH Erosion South of Topanga Beach

Erosion Hotspots: Nicholas Canyon



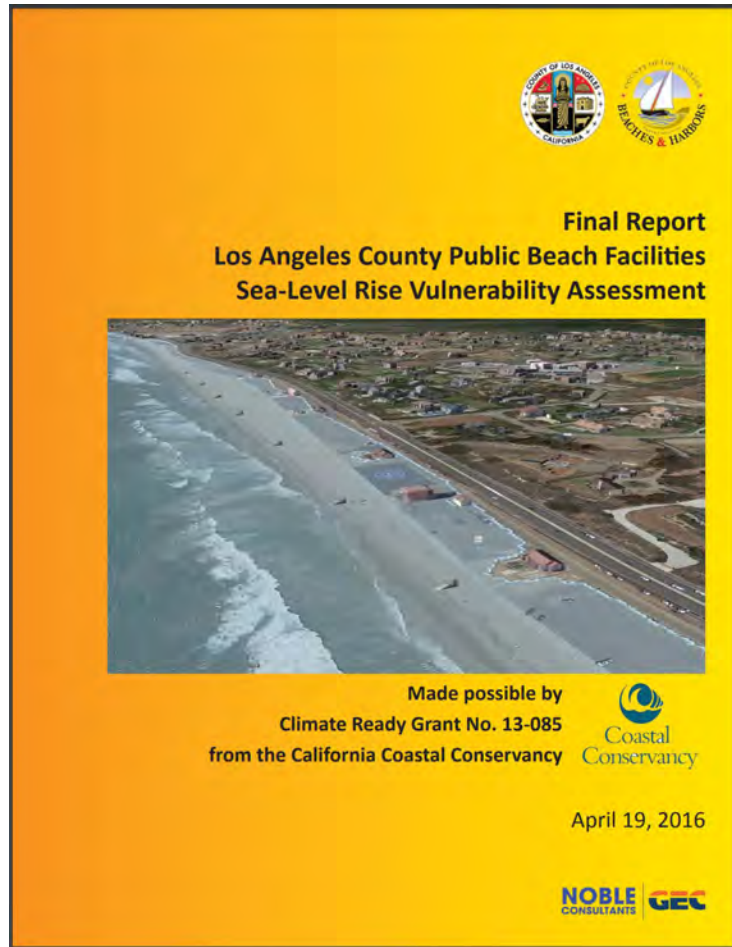
Nicholas Canyon road erosion, 2017

Erosion Hotspots: Point Dume



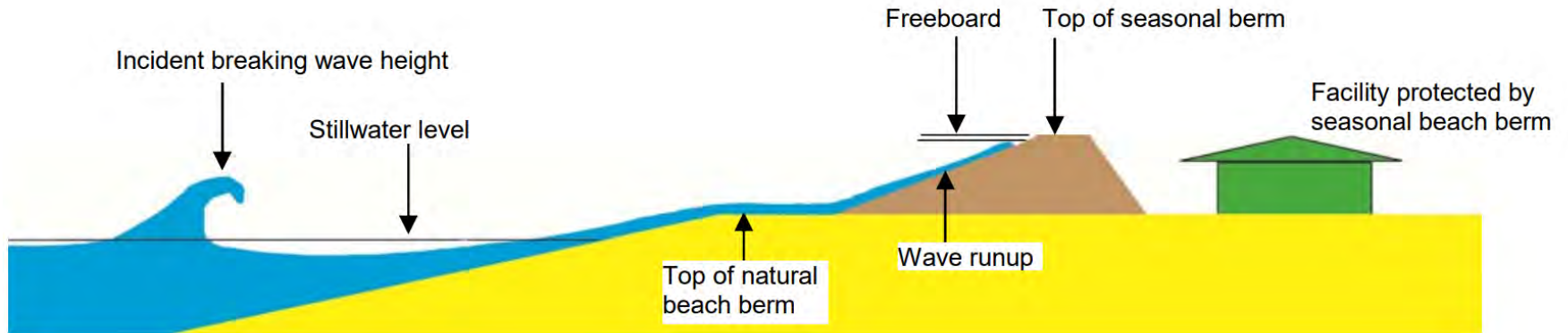
Point Dume erosion, emergency shore protection & access road repairs, 2021

Past Planning: 2016 Sea-Level Rise Vulnerability Assessment

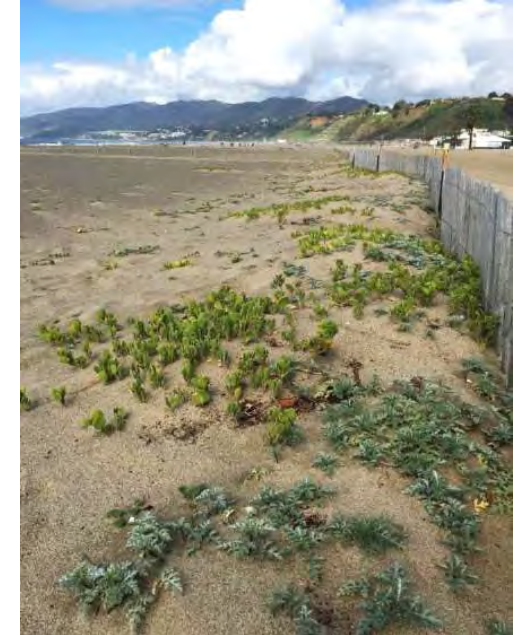
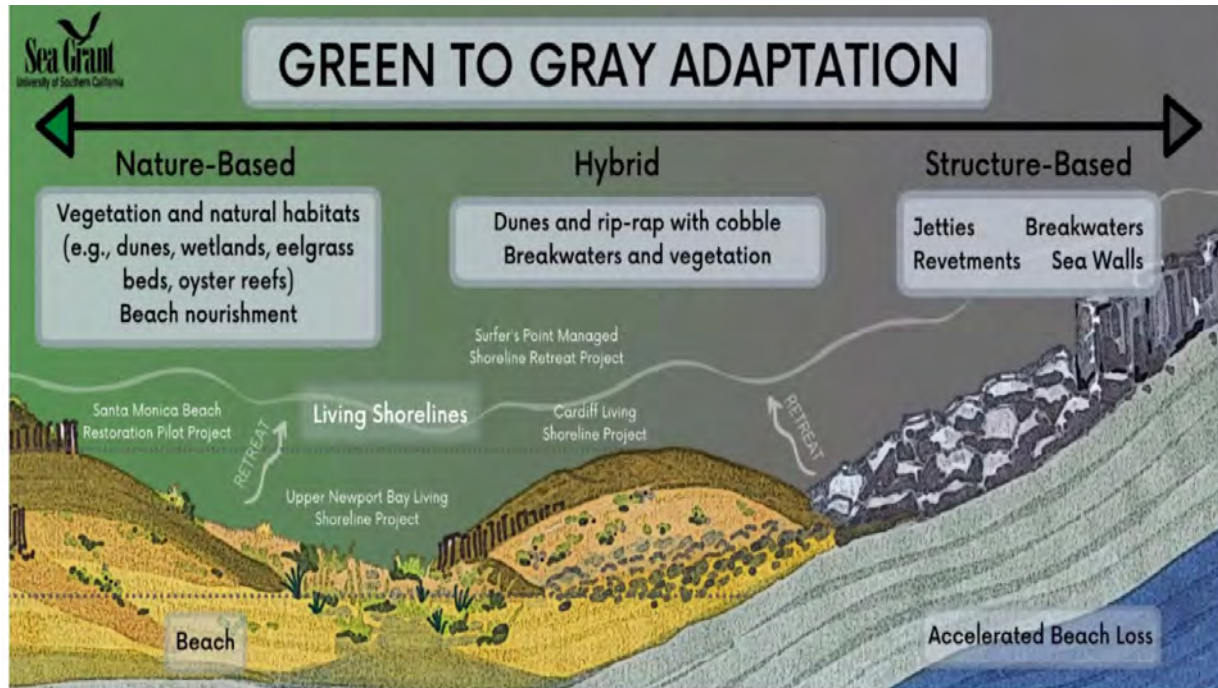


2016 report can be found here: <https://beaches.lacounty.gov/sea-level-rise>

Current Efforts: Seasonal Berms

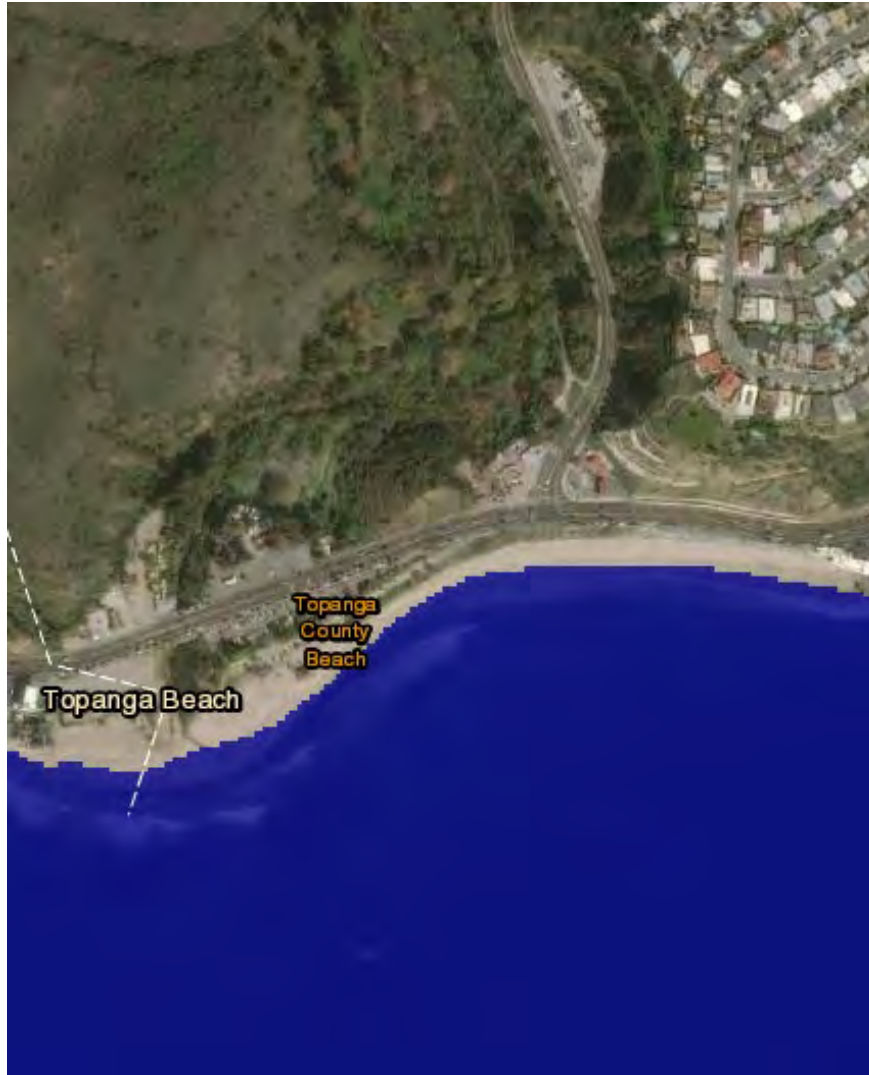


Future Planning: Coastal Resiliency Needs Assessment



REPLICATED FROM: GRIFMAN, GRUBBS, AND JOHNSTON 2020
CREDIT: M. GRUBBS, USC SEA GRANT ADAPTED FROM NOAA 2015

Sea-Level Rise Predictions: Topanga Beach 2100



CURRENT



6 FEET

Potential Adaptation Strategies: Nature-based Shoreline Protection



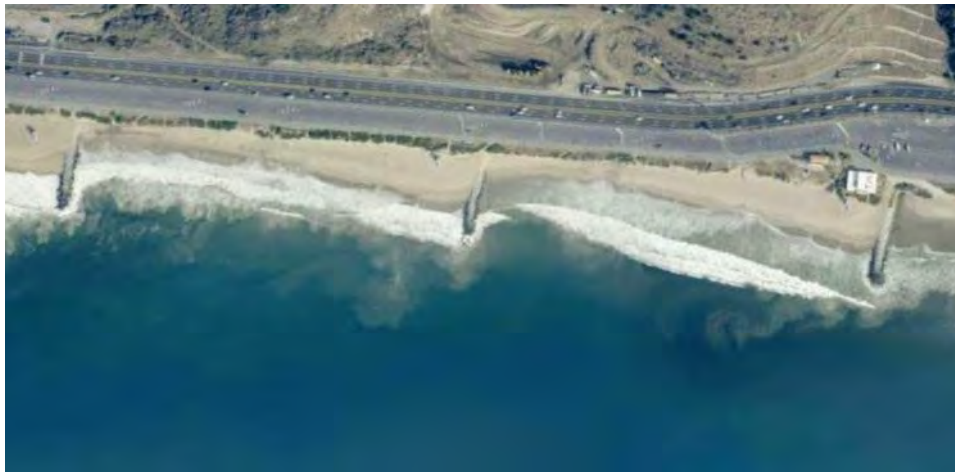
Before



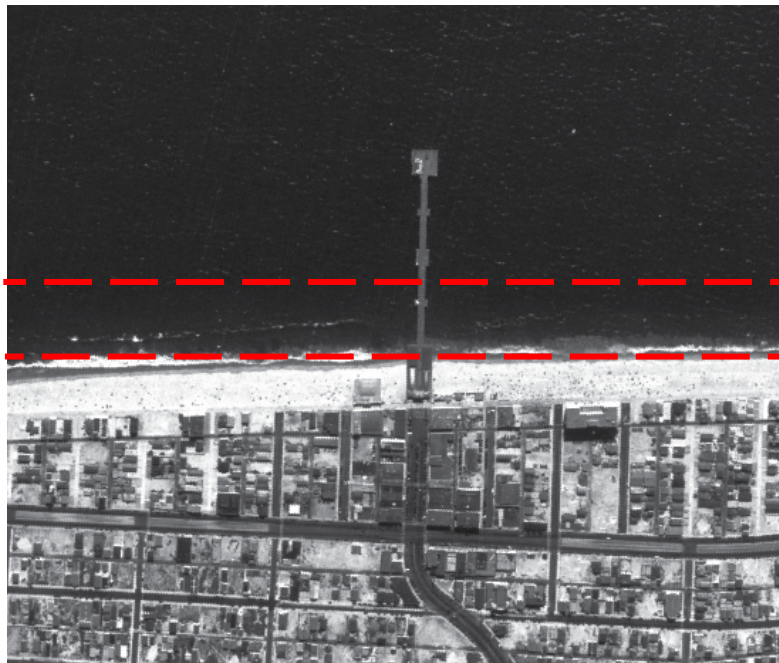
After



Potential Adaptation Strategies: Sediment Retention Infrastructure



Potential Adaptation Strategies: Artificial Beach Nourishment



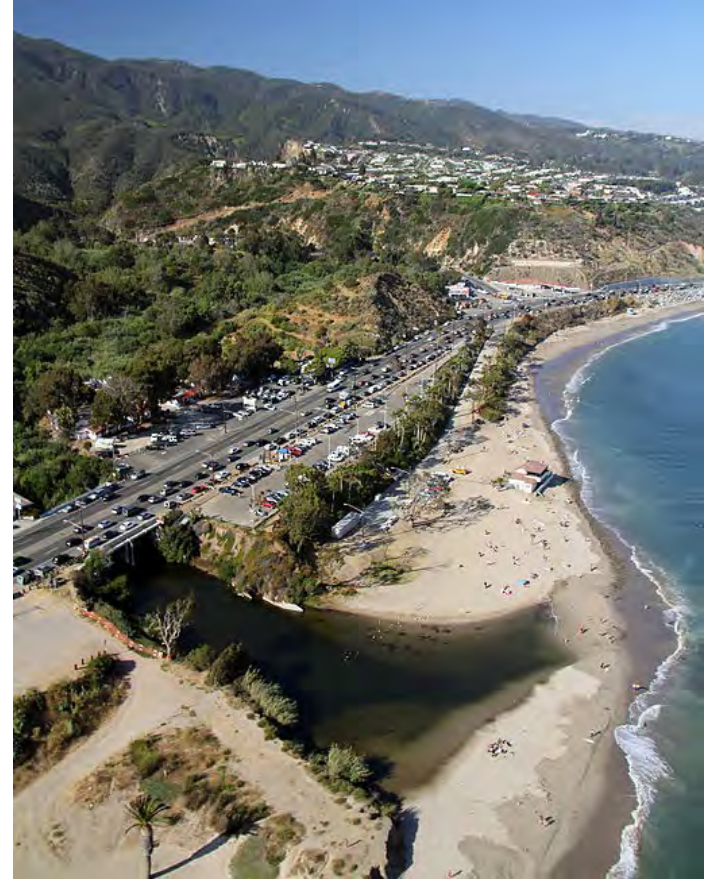
● 2017
● 1938

HERMOSA BEACH

Potential Adaptation Strategies: Nature-based Sediment Transport



Rindge Dam Removal, Santa Monica Mountains

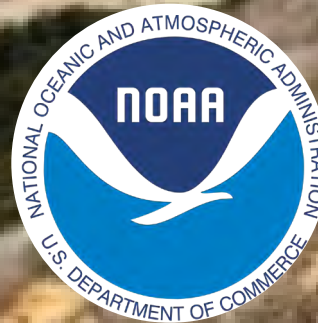


Topanga Lagoon Restoration

Federal, State and County Partnerships and Initiatives



MEASURE A



WARREN ONTIVEROS

WONTIVEROS@BH.LACOUNTY.GOV

(424) 526-7745

CHIEF, PLANNING DIVISION

DEPARTMENT OF BEACHES AND HARBORS

COUNTY OF LOS ANGELES

13837 FIJI WAY

MARINA DEL REY, CA 90292



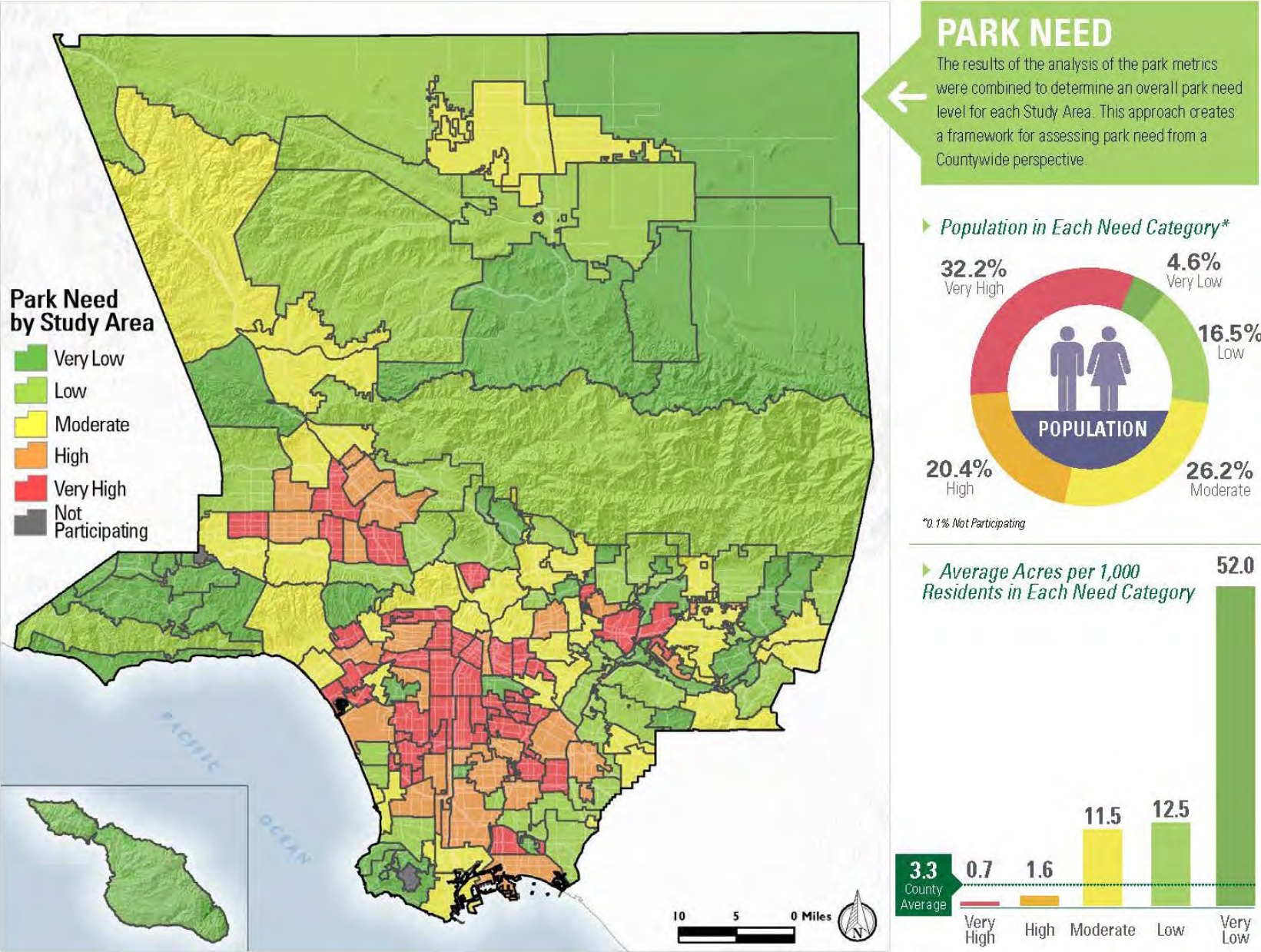


Regional and Rural Edition

An Update to the 2016 Los Angeles Countywide Parks Needs Assessment

April 6, 2022

2016 Countywide Parks Needs Assessment



Building on the 2016 Parks Needs Assessment

ENVIRONMENTAL CONSERVATION AND RESTORATION PRIORITIES

Identifies priority areas based on an analysis of environmental benefits and burdens.

REGIONAL RECREATION PRIORITIES

Focuses on regional recreation parks, natural areas and open spaces including trails, beaches and lakes.

RURAL RECREATION PRIORITIES

Focuses on parks and recreation needs in rural areas.

2016 COUNTYWIDE PARKS NEEDS ASSESSMENT (PNA)

Focuses on close to home access to park amenities located within a 10-minute walk.



Equity-driven Process

This study is all about **EQUITY. WE WANT TO:**

- Ensure that **EVERYONE HAS ACCESS** to our beaches and lakes, open spaces and natural areas, regional parks, trails, and parks and recreational facilities in rural areas, regardless of race, social class, gender, disability status, or other characteristics.
- Collect data and provide analysis that will inform planning and decision-making to ensure that **PARK RESOURCES ARE DISTRIBUTED MORE EQUITABLY** and that all communities will be able to enjoy the full range of benefits offered by parks and recreational facilities.
- Create **OPPORTUNITIES FOR MEANINGFUL DIALOGUES AND CONNECTIONS** among people from diverse backgrounds and cultures.
- **DEVELOP AN INCLUSIVE, ACCESSIBLE, AND TRANSPARENT PROCESS** for public engagement and decision-making.



Regional Focus

OBJECTIVE #1

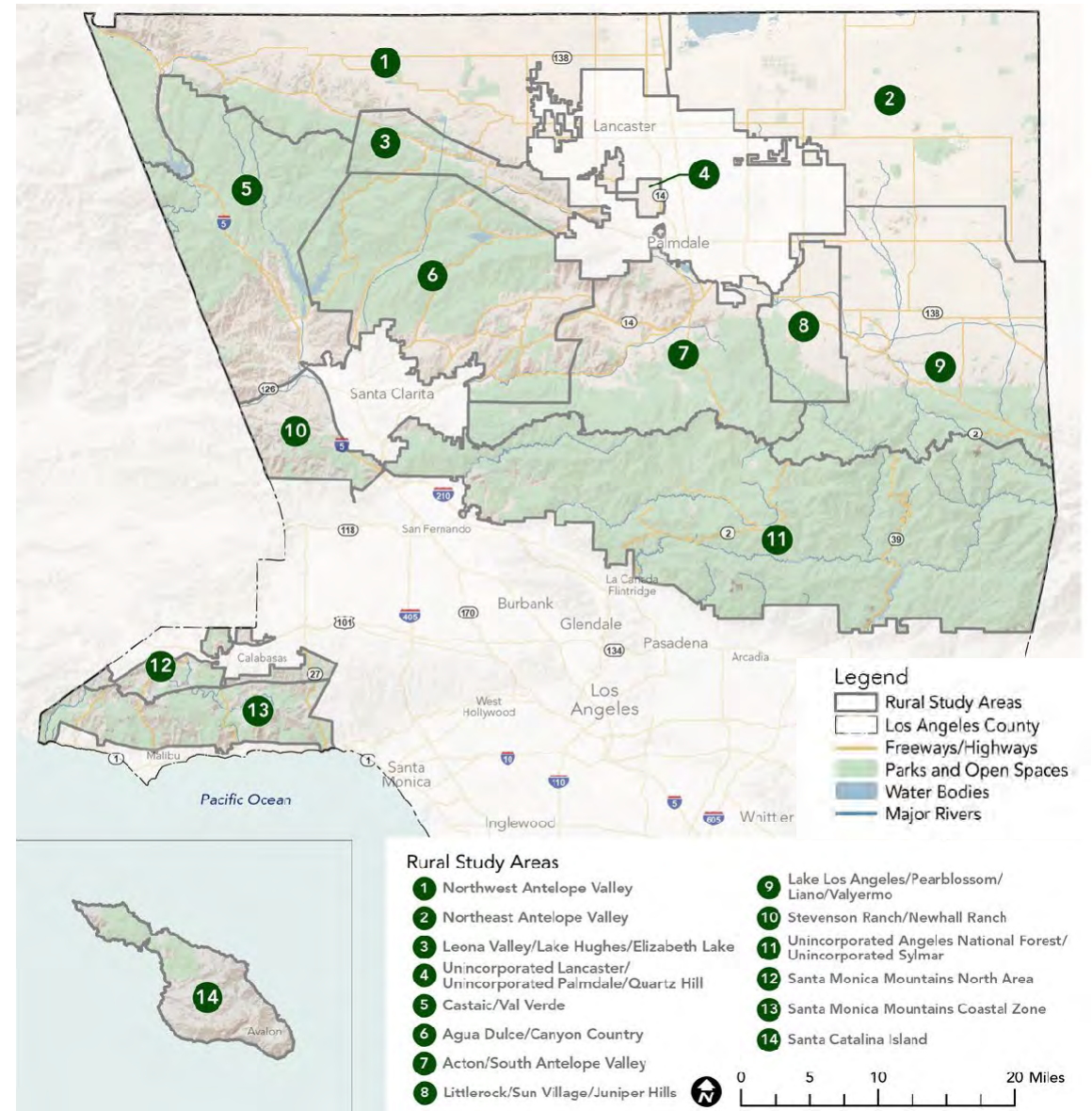
A comprehensive inventory and equity-driven analysis of **Regional** parks and open space assets, including regional recreational facilities, beaches and lakes, open space and natural areas, and trails.



Rural Focus

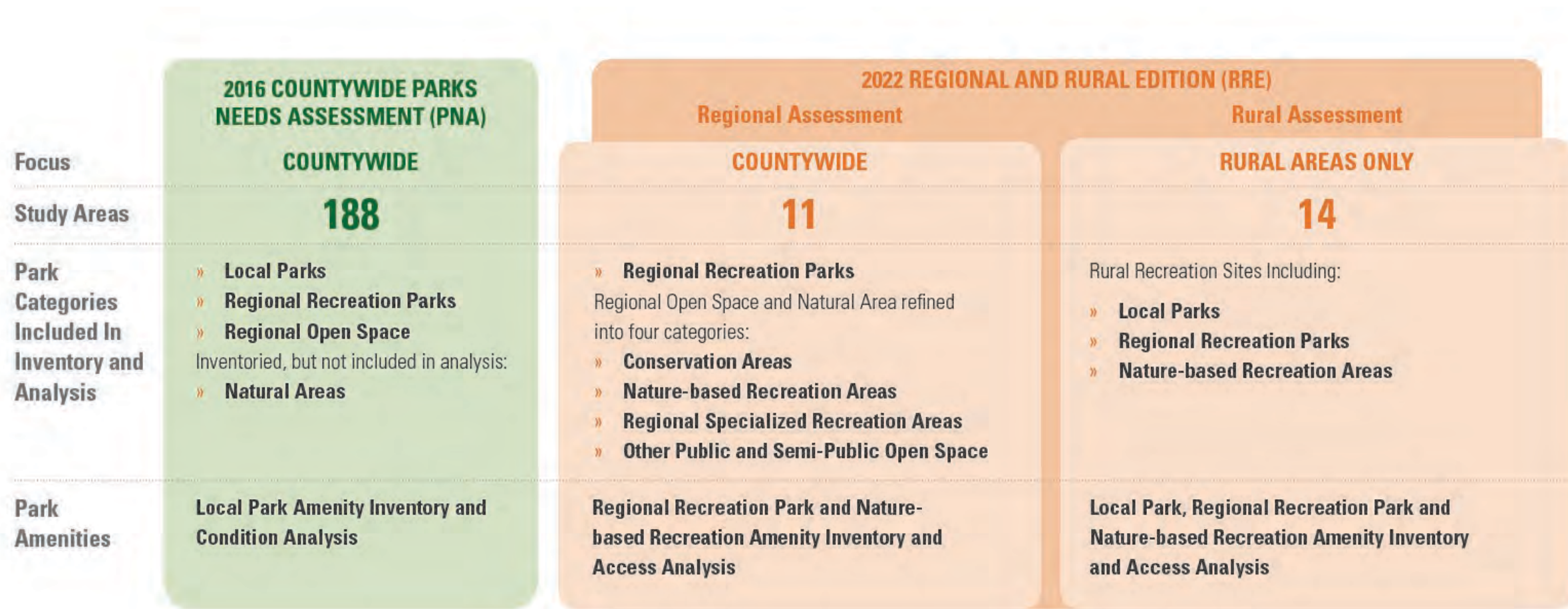
OBJECTIVE #2

An examination of park needs in the **Rural** areas of Los Angeles County using equity-driven methods and metrics.












Rural Study Areas

Building on the 2016 Parks Needs Assessment



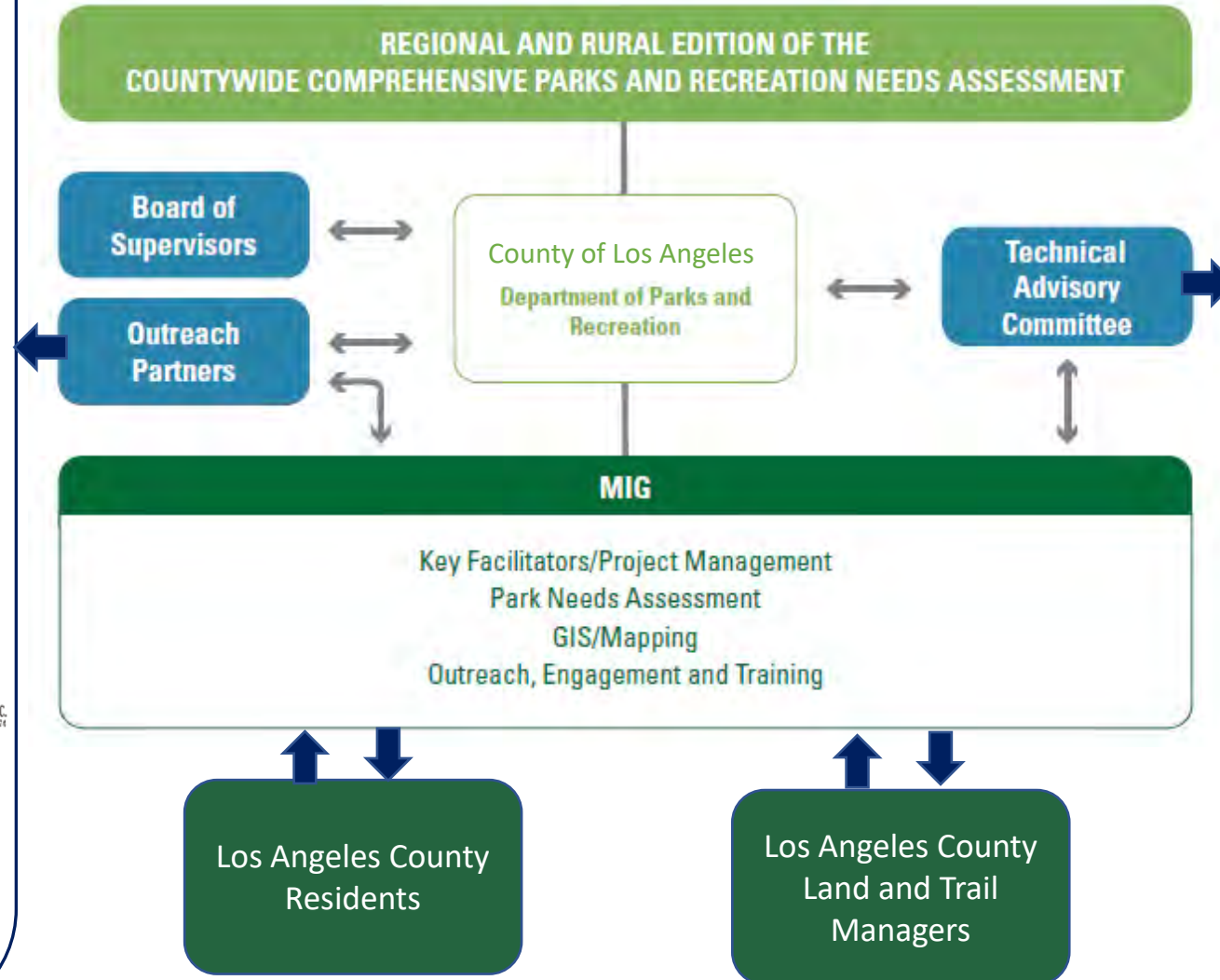
Building on the 2016 Parks Needs Assessment

	2016 COUNTYWIDE PARKS NEEDS ASSESSMENT (PNA) COUNTYWIDE	2022 REGIONAL AND RURAL EDITION (RRE)	
		Regional Assessment COUNTYWIDE	Rural Assessment RURAL AREAS ONLY
Key Metrics	<ul style="list-style-type: none">» Park Land per 1,000 Residents» Park Access» Park Pressure» Population Density	<ul style="list-style-type: none">» Regional Park Land and Trail Miles per 1,000 Residents» Regional Park and Trail Access» Regional Site Visitorship Rates» Environmental Benefits and Burdens» Population Vulnerability	<ul style="list-style-type: none">» Rural Recreation Site Land per 1,000 Residents» Rural Recreation Site Access» Population Vulnerability
Park Access Modes Analyzed	 Walking (10 minutes or 0.5 miles)	 Walking (10 minutes or 0.5 miles)  Cycling (2.5 miles)  Driving (5 miles)  Public Transit (stop within 0.5 miles of entry)	 Walking (10 minutes or 0.5 miles)  Cycling (2.5 miles)  Driving (5 miles and 10 miles)  Public Transit (stop within 0.5 miles of entry)
Priorities Identified	Park Need Category by Study Area based on: <ul style="list-style-type: none">» Population Density» Distance to a Park» Park Acre Need	<ul style="list-style-type: none">» Regional Recreation Priority Areas based on:<ul style="list-style-type: none">» Social, Environmental, Transportation and Health Vulnerability» Distance to Regional Recreation Sites» Regional Site Visitorship Rates» Environmental Conservation and Restoration Priority Areas	<ul style="list-style-type: none">» Priority Areas for Enhancing Rural Recreation based on:<ul style="list-style-type: none">» Social, Environmental, Transportation and Health Vulnerability» Distance to Rural Recreation Sites» Distance to Rural Recreation Amenities» Priority Project Types by Study Area

Community Outreach Partners



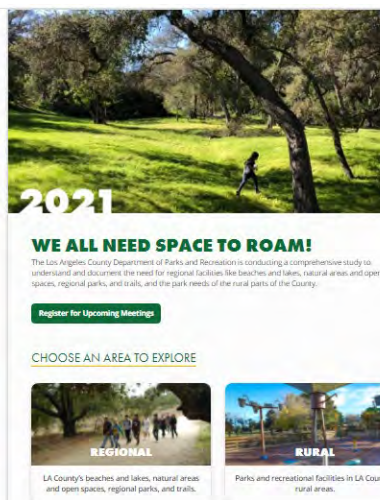
Stakeholder Engagement



Technical Advisory Committee



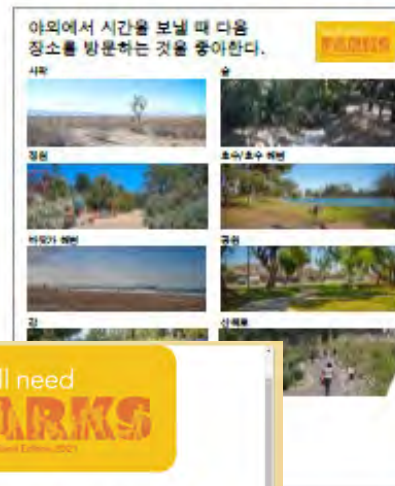
Community Engagement Summary



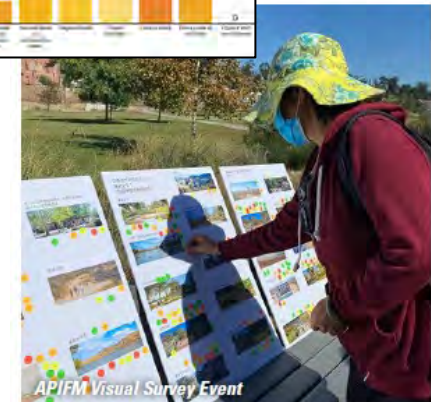
Informational Video



Digital and Printed Surveys



Social Media Posts



Digital Workshops and In-Person Events

Regional Recreation Priorities

COMMUNITY NEEDS: Priorities for Improving Regional Park Access and Experiences



MORE SHADE

More shade structures and mature trees.



ACCESS TO WATER

Water fountain for users and animals, more splash pads and water features for cooling off, and improved water conservation.



TRANSPORTATION OPTIONS

Improve public transit to parks, including more frequent service to address access for community members without cars, and create more opportunities for shuttle services that connect communities to parks.



MORE PARKING

More and expanded parking opportunities at trailheads and parks and advertise parks with free parking.



ACCESS TO INFORMATION

Improve community awareness and expand publicity about regional parks, facilities, and events, and organizations that can connect residents to parks. Provide more frequent public meetings with parks staff.



IMPROVED SIGNAGE

Expand use of interpretive, wayfinding and educational signage in parks and along trails and ensure signage is multilingual and accessible, including audio and braille options.



LIGHTING

Expand lighting at parks and facilities, especially at night.



ADA ACCESSIBILITY

Provide wheelchair and disabled accessible trails and facilities, and plan for places with soft ground for those recovering from injury.



NATIVE AND TRIBAL ACCESS

Provide access and privacy to Native peoples who want to use, enjoy and practice on ancestral lands, and raise awareness and educate the community about tribal stewardship and the indigenous history of the region as part of Tongva, Tataviam, and Chumash lands.



TO FEEL WELCOME

People of color need to feel welcome and safe in regional parks and spaces, and multilingual programming and information should be available to all.



TO FEEL SAFER

Add emergency call devices along trails, address crime and graffiti at parks, and ensure safe sidewalks walking paths for pedestrians.



ADDRESS HOMELESSNESS

Expand services and partnerships to support unhoused people who use parks.



IMPROVED MAINTENANCE AND INFRASTRUCTURE

Provide more regular maintenance and cleaning of restrooms, more trail maintenance to mitigate fire danger, improve trash collection, update play equipment and playgrounds and provide Wi-Fi for park users.



ADDITIONAL STAFFING

Additional parks staff and volunteer ambassadors for programming, facilities maintenance and security at parks.



BETTER ACCESS TO PROGRAMS

Improve and standardize the online reservation system, increase the variety of recreation classes, provide classes for all age groups, including seniors, and expand science, nature and stewardship programs and activities.



MORE RECREATION FACILITIES

Extend facilities hours and build more tennis, pickleball, basketball courts, disc golf and other facilities to meet demand.



DEDICATED USE TRAILS

Provide separate trails for hiking, biking, equestrian use to help mitigate conflict and increase safety for all users along trails.



ENHANCED CONNECTIVITY

Work with cities and other public agencies to develop greenways and greenbelts between parks and in the regional watersheds.



CLIMATE ADAPTATION EDUCATION

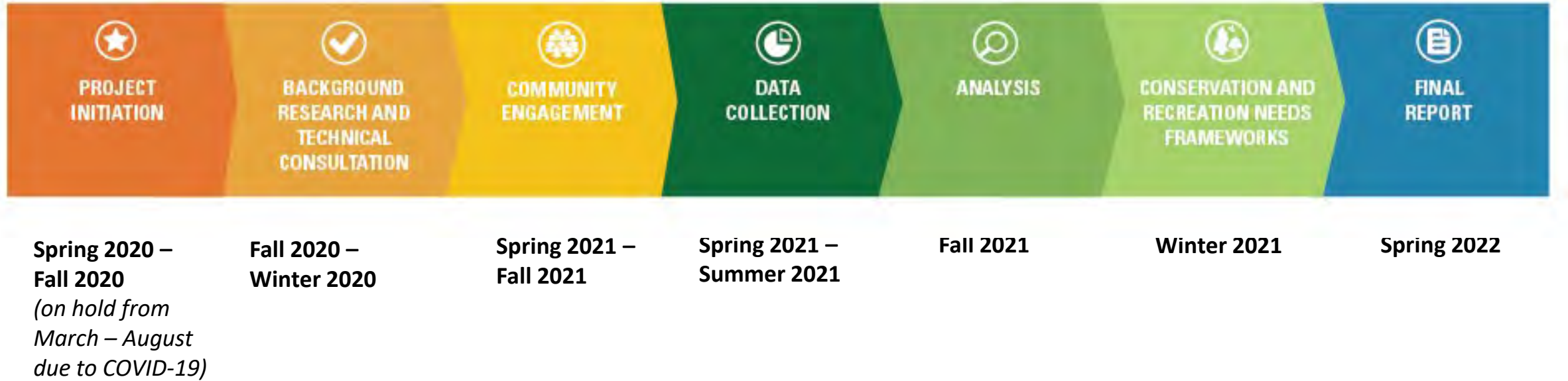
Educate the public about importance of parks for climate health, plant native species and increase local biodiversity.



PARTNERSHIPS WITH SCHOOLS, PUBLIC AGENCIES AND ORGANIZATIONS

Foster environmental stewardship and expand park use and greenspace access through school and community partnerships.

Project Timeline



Population Vulnerability

Social Barriers Dimension:



- » Poverty
- » Unemployment
- » Two Parent Household
- » Majority Minority Population
- » Young Children
- » Elderly
- » Non-English Speaking

Transportation Barriers Dimension:



- » Limited Active Commuting
- » Limited Automobile Access
- » Limited Public Transit Access
- » Traffic Density
- » Pedestrian Injuries

Health Vulnerability Dimension:



- » Life Expectancy at Birth
- » Pollution

Environmental Vulnerability Dimension:

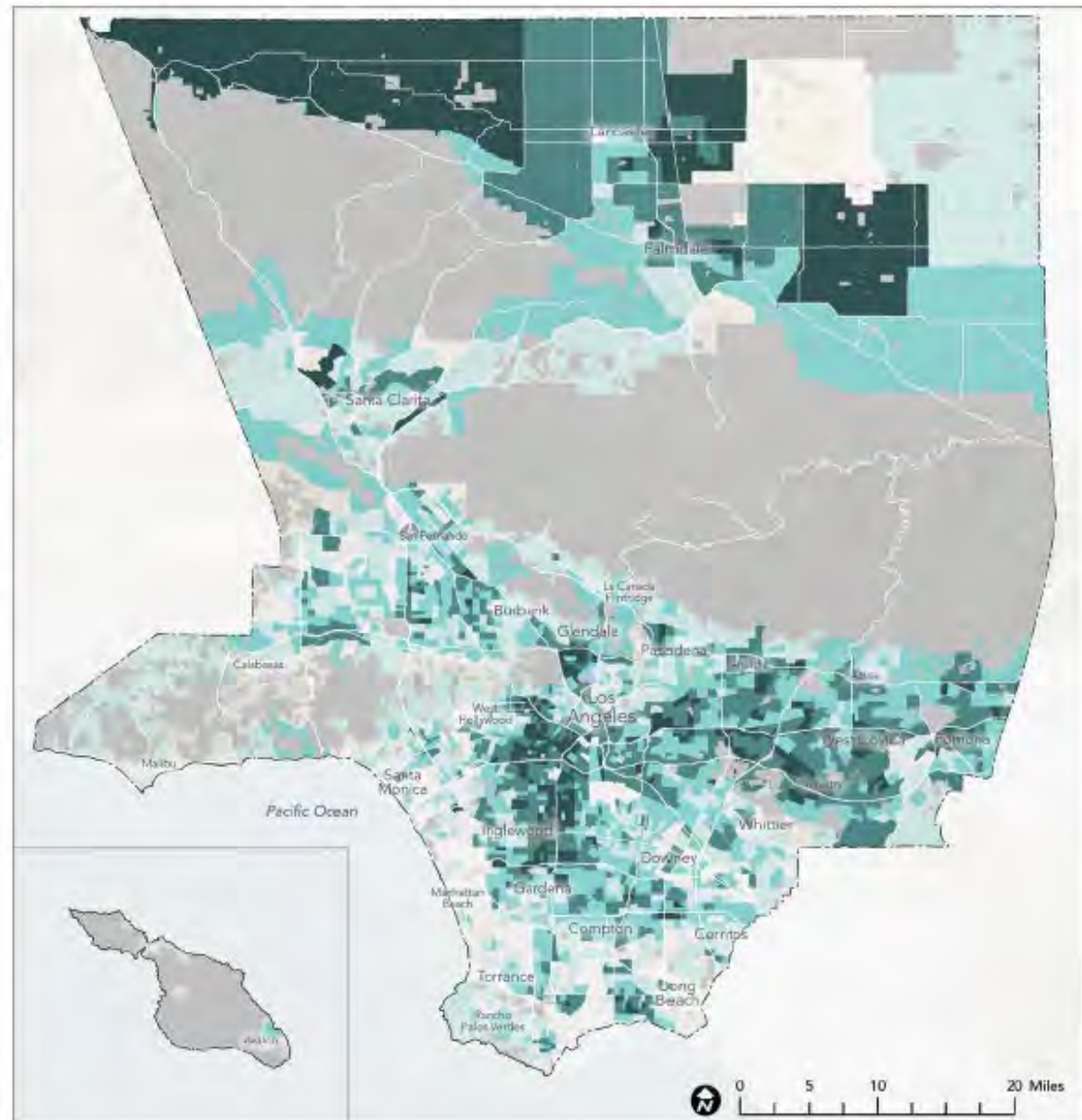


- » Limited Park Access
- » Limited Tree Canopy
- » Impervious Surface
- » Excessive Heat Days
- » Urban Island Heat Index

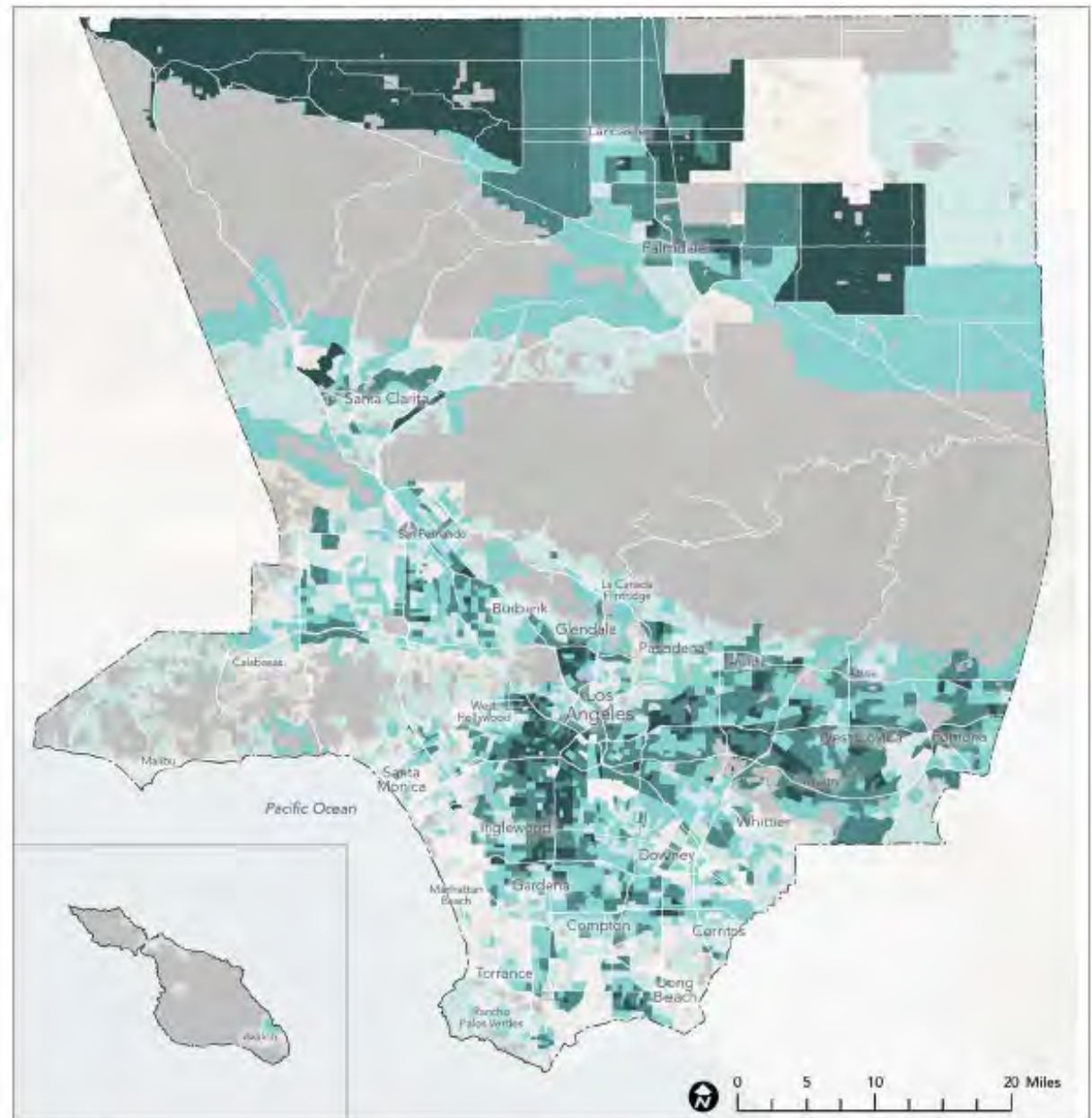
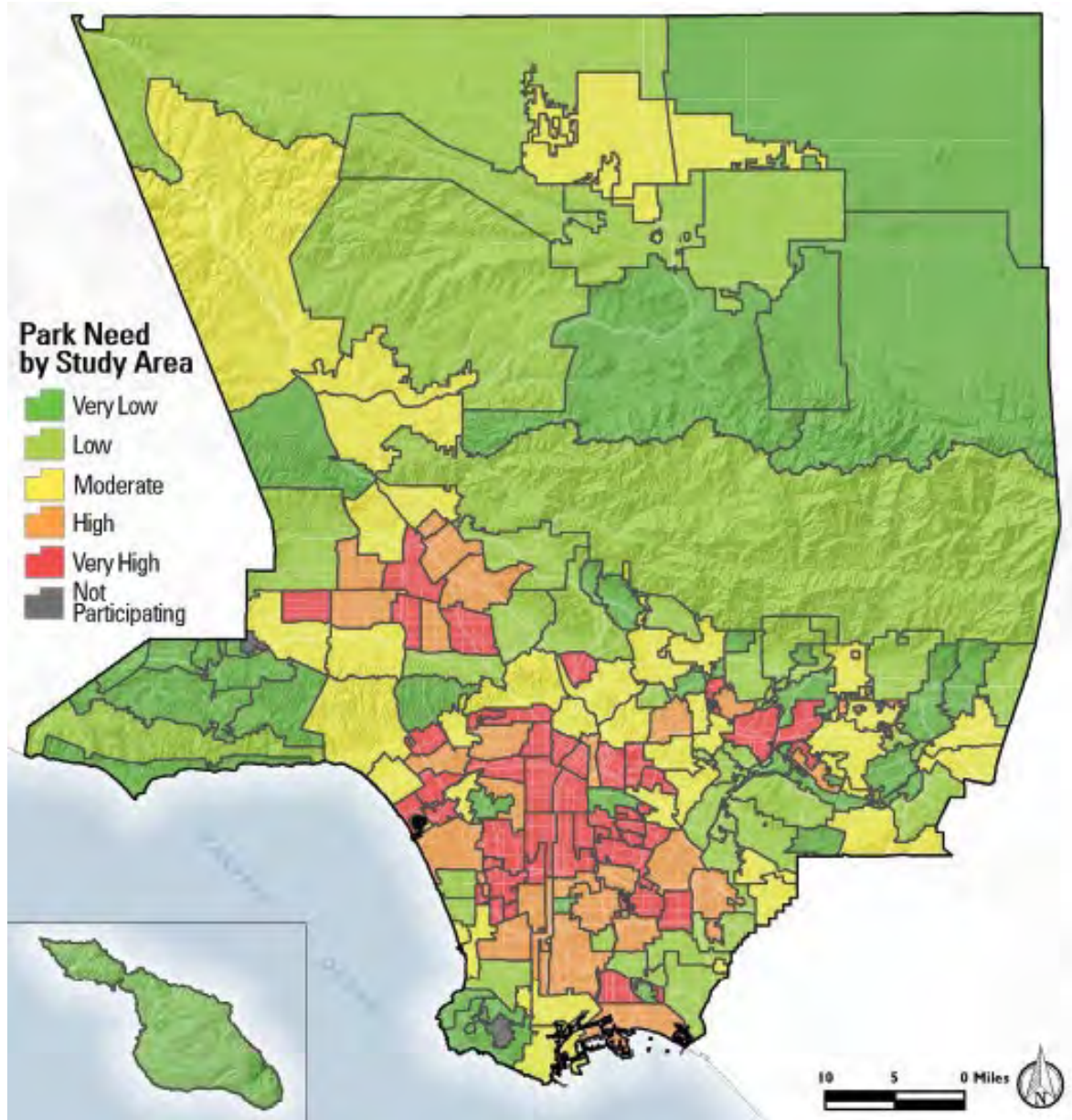
Dimensions of Population Vulnerability

Legend

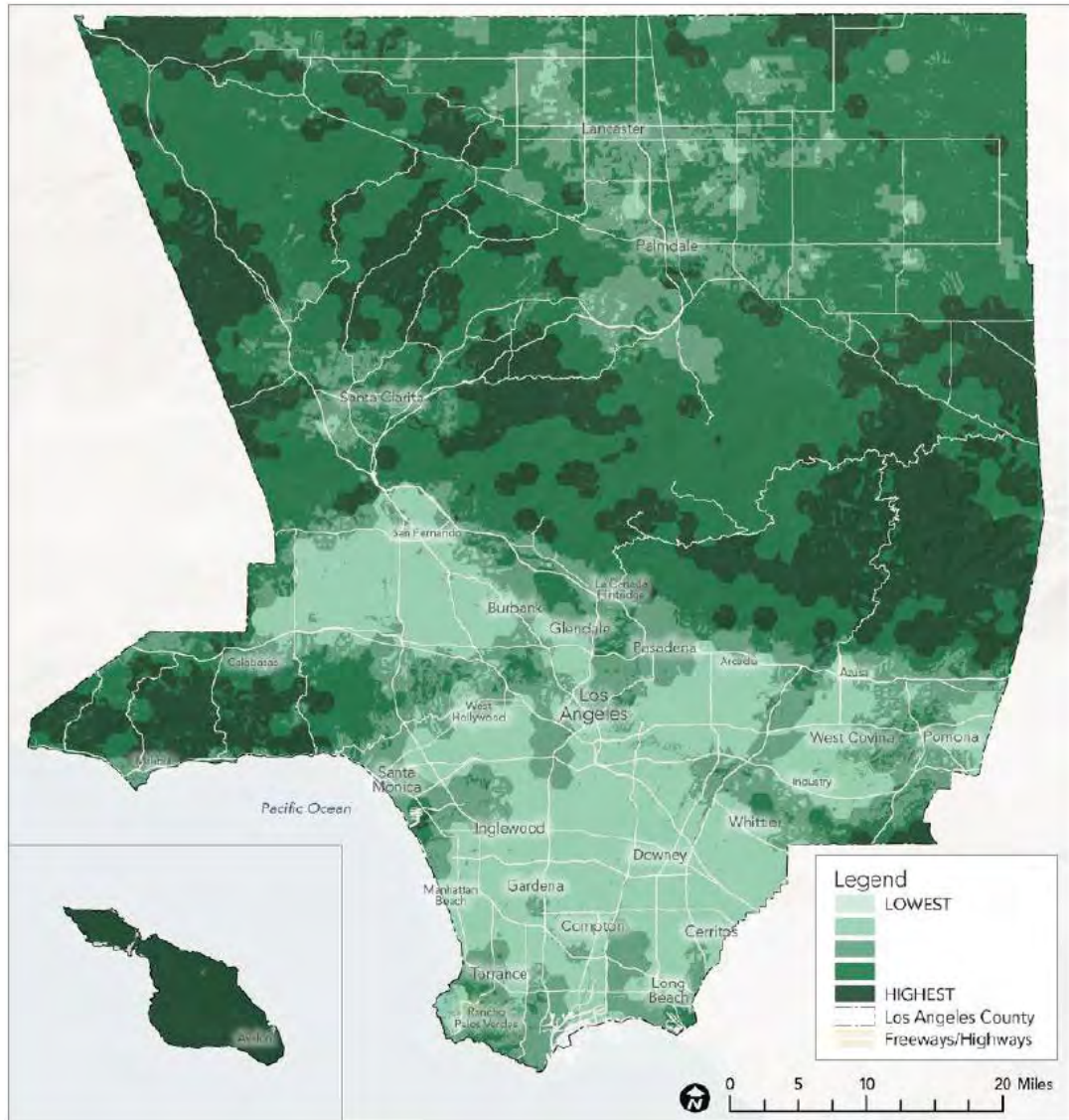
- Moderate to High Vulnerability for ONE Dimension
- Moderate to High Vulnerability for TWO Dimensions
- Moderate to High Vulnerability for THREE Dimensions
- Moderate to High Vulnerability for FOUR Dimensions
- Regional Site Inventory
- Los Angeles County
- Freeways/Highways



Park Need Level and Population Vulnerability

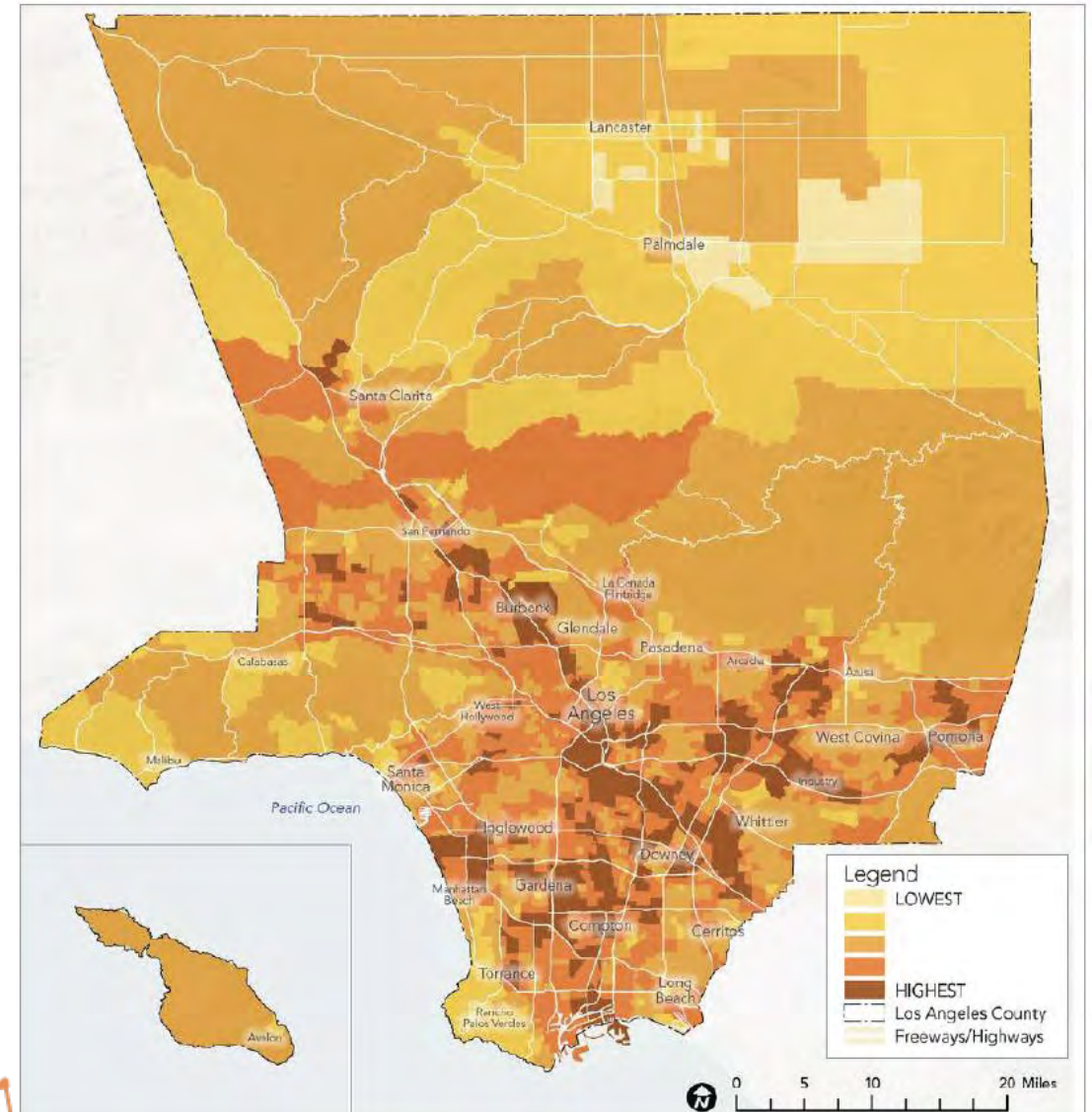


Environmental Benefits and Burdens



Indicators: Species Diversity, Significant Habitat, Habitat Connectivity, Proximity to Waterbody, Habitat Type

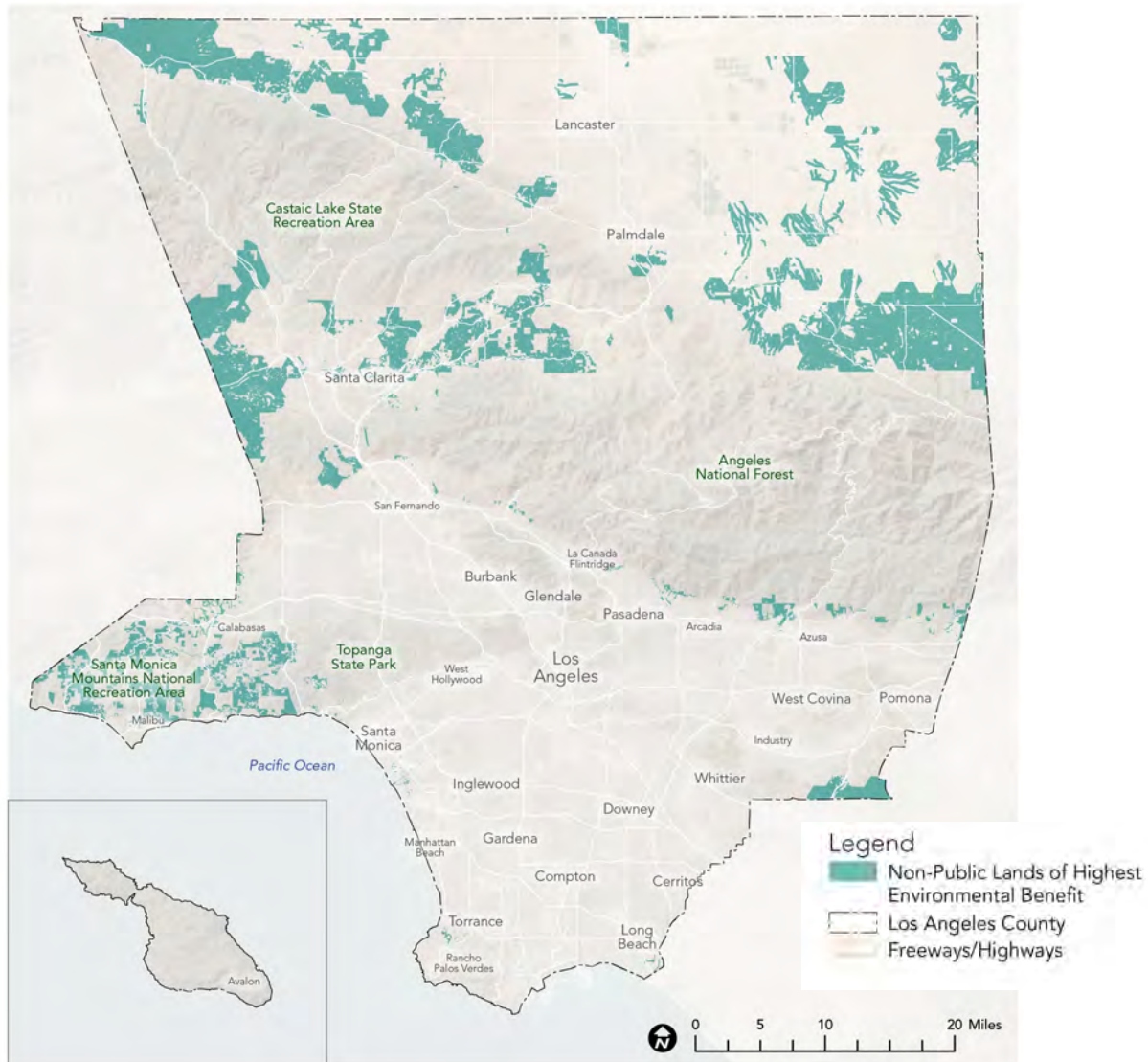
Environmental Benefits



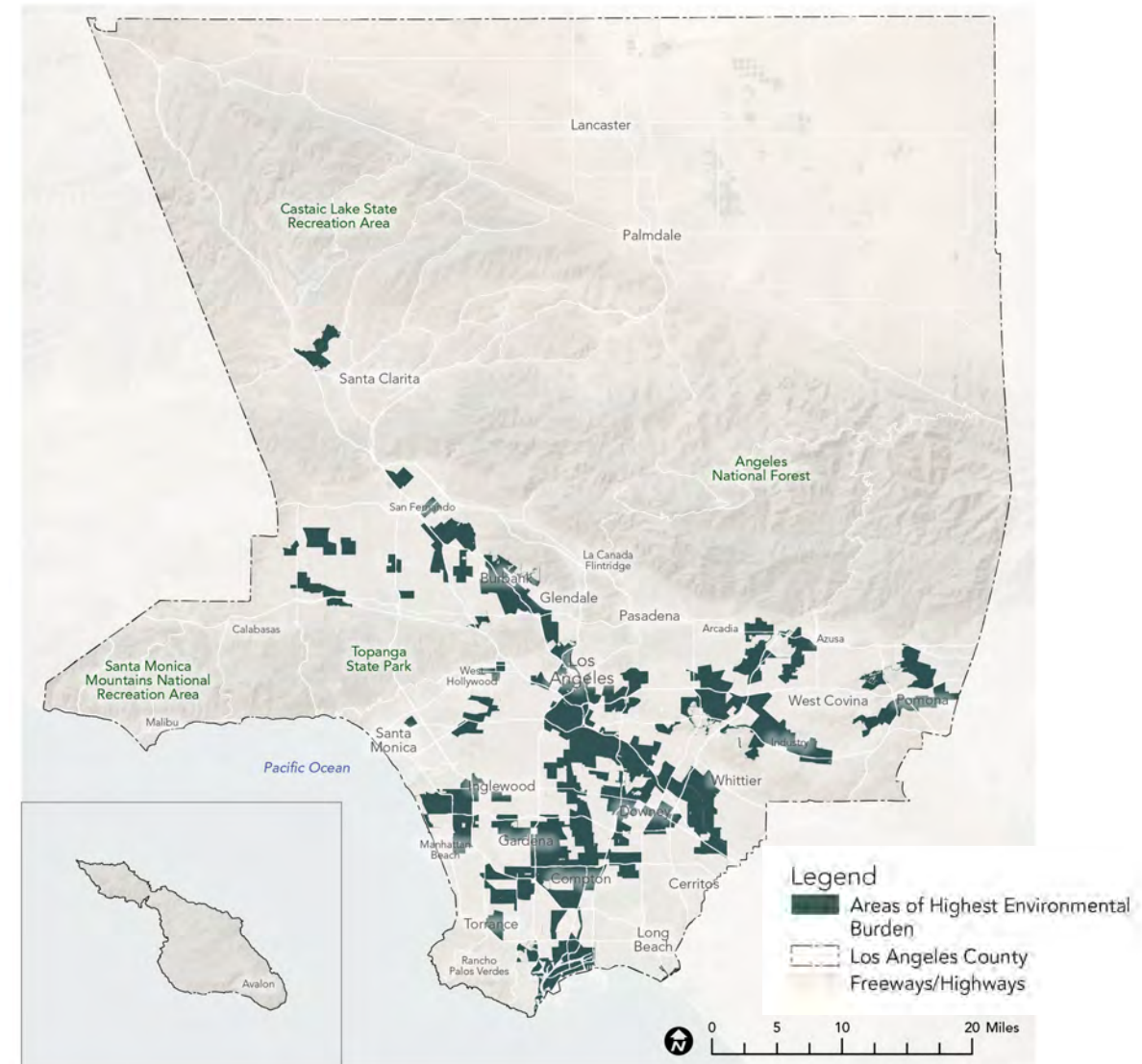
Indicators: Groundwater Threat, Hazardous Waste., Drinking Water Quality, Fine Particulate Matter, Pollution Burden

Environmental Burdens

Priority Areas for Environmental Measures



Priority Areas for Environmental Conservation



Priority Areas for Environmental Restoration

Federal 30x30: America the Beautiful Initiative



California Draft Pathways to 30x30 Strategy

