



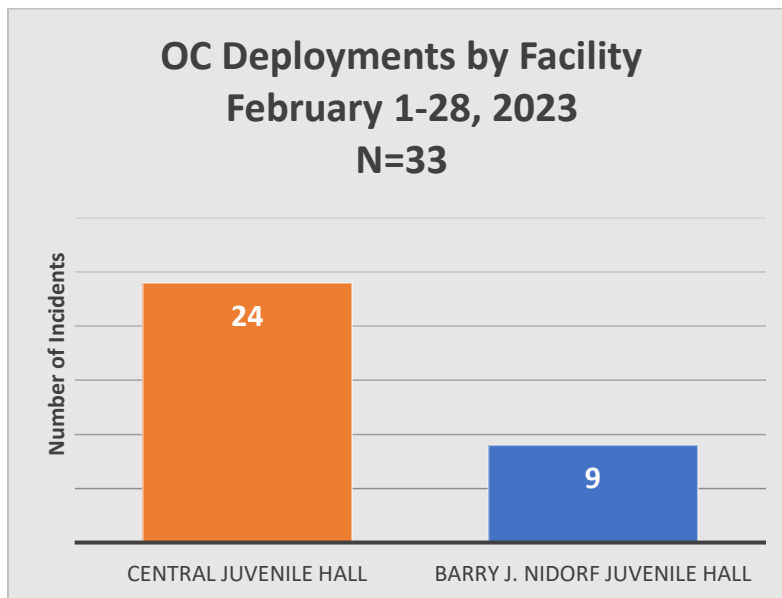
Probation Oversight Commission
 Oleoresin Capsicum (OC) Deployment Summary: Update III
 February 28, 2023

The Probation Oversight Commission (POC) continues to track the deployment of OC spray within Probation’s two juvenile hall facilities, Barry J. Nidorf Juvenile Hall (BJNJH) and Central Juvenile Hall (Central). As called for in the Board of Supervisors’ December 20, 2022 motion, Phase Out of Oleoresin Capsicum (OC) Spray at Central Juvenile Hall¹, the POC continues to analyze Probation’s Weekly OC Deployment Reports and Quarterly OC Phase Out Reports.

Reporting on the utilization of OC has taken place in the following schedule:

Report:	Contains Data Through:
OC Deployment Summary ²	September 30, 2022
Update I ³	December 31, 2022
Update II ⁴	January 31, 2023

During the month of February, there were a reported total of 33 incidents of OC use across both juvenile hall facilities.



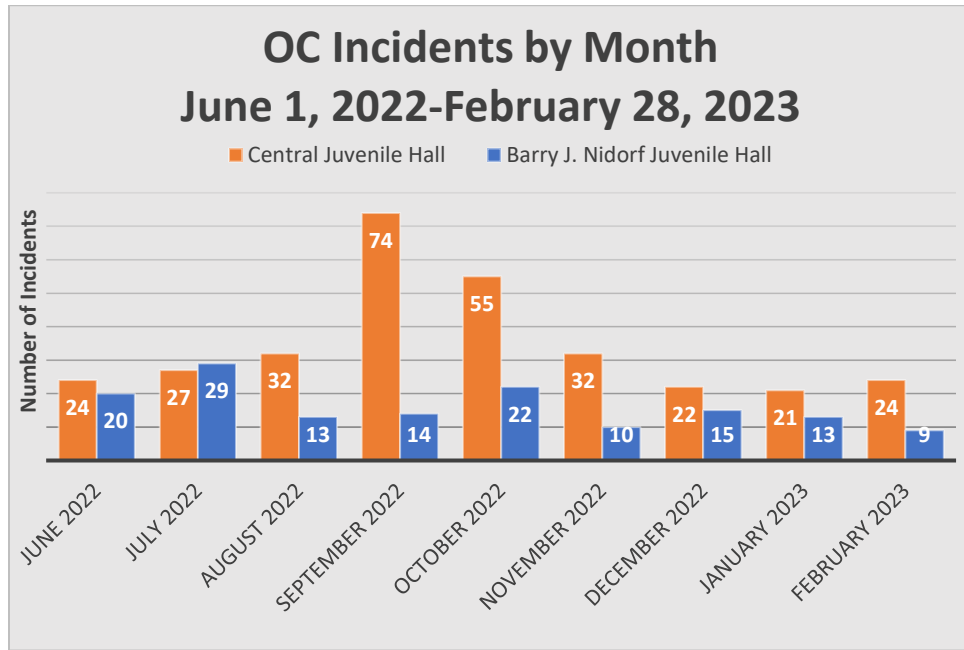
¹ [Phase Out of Oleoresin Capsicum \(OC\) Spray at Central Juvenile Hall](#)

² [OC Deployment Summary](#)

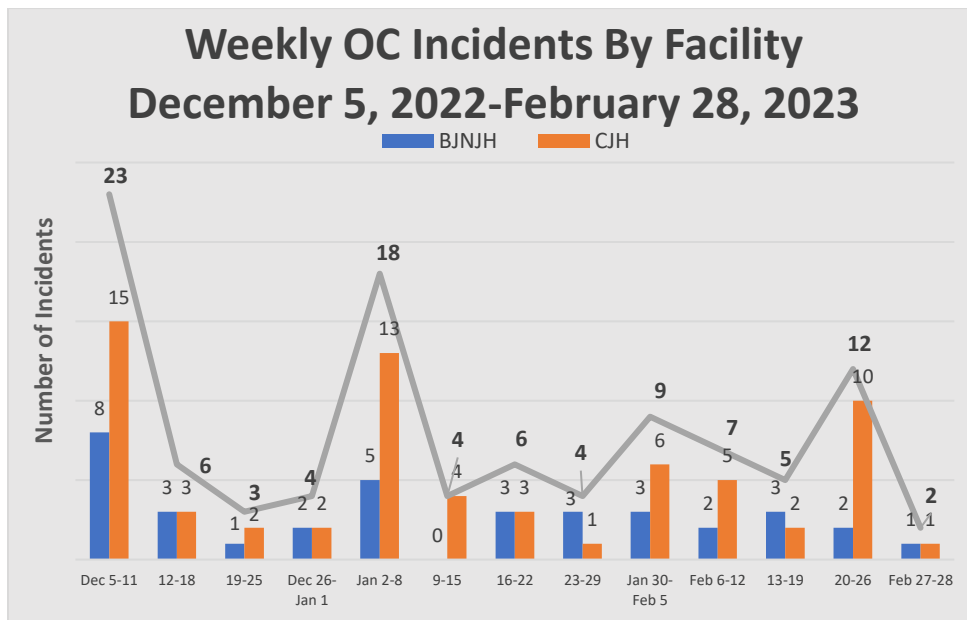
³ [OC Deployment Summary: Update](#)

⁴ [OC Deployment Summary: Update II](#)

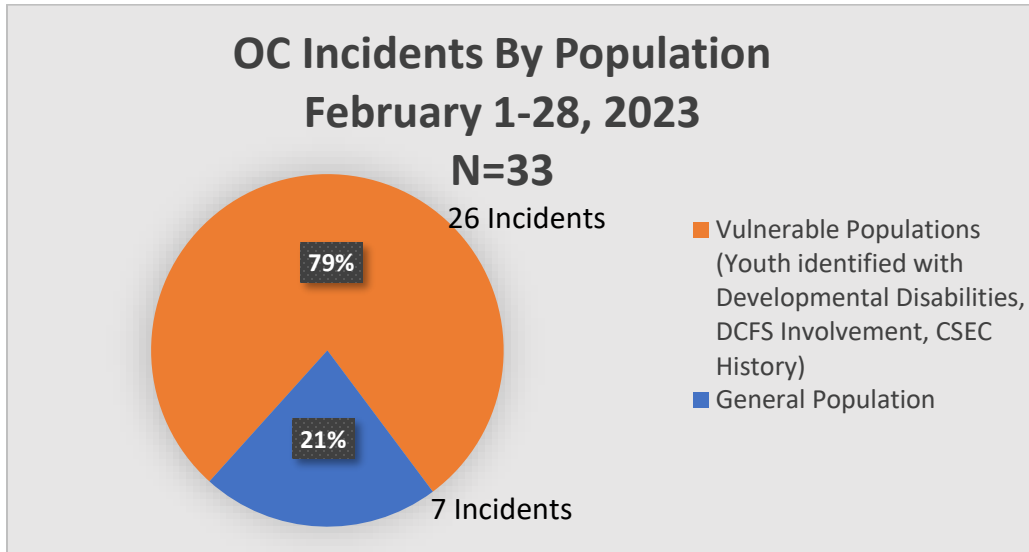
The pattern of higher reliance on OC observed at Central has been observed over several months since the POC began receiving and analyzing OC data. In five of the last nine months, Central has utilized OC at a rate double that used at BJNH.



Similar to what was documented in the last OC update, wide variations in weekly OC use still pose a barrier to proclaiming a decreasing trend. Central Juvenile Hall had numerous weeks of lower facility-wide OC deployment, including weeks that had less than at BJNH, but are punctuated by weeks of high deployment that result in higher monthly totals.



Throughout the month of February, the POC received weekly OC Deployment reports with significant additions that indicated when youth identified as developmentally disabled, having history of commercial sexual exploitation (CSEC), and Department of Children and Family Services (DCFS) involvement were involved in an OC incident. Although administration and staff at Central were preparing for the elimination of OC on units housing girls, gender expansive youth and those with developmental disabilities, examination of reports indicate that most OC incidents in February involved vulnerable youth.



Of the 25 incidents involving vulnerable youth:

- 10 incidents involved girls;
- Eight incidents involved youth with developmental disabilities;
- Four incidents involved youth with CSEC history; and
- 23 incidents involved youth with DCFS involvement.

This was the first month that demographic data was included to identify vulnerable youth involvement in weekly OC Deployment Reports, so there is no other baseline for comparison to confirm whether OC use previously affected vulnerable youth at this rate. This data raises concerns about the department's inability to adequately meet the supervision needs of youth with complex trauma histories, including those with documented histories of child abuse, with the current standard of care and services available in juvenile hall settings. Specifically, if the training and services available are not sufficient to manage the behaviors and mental health symptoms of youth with trauma complex histories, the county has a responsibility to immediately move these youth to a setting where interventions will not add to their trauma.

On February 26, 2023, staff assigned to work on the units identified for phase out, including Units AB, CD, Boys Care, Boys ESU, Girls Care/Girls ESU, had all either turned in their OC spray or had been instructed to do so immediately. Staff on these units substantially understood that OC was not to be used. Laminated signs were posted on most doors of the targeted units to alert anyone responding to the unit that OC is not to be deployed on the units. Given the elimination on these units, it is anticipated that OC involvement of vulnerable youth should decrease in the following months leading up to full elimination from all facilities.

It is worthwhile to note that while Central eliminated OC spray in units that are designated to house youth with developmental disabilities, there were OC deployments on vulnerable youth housed on non-designated units in both facilities. At CJH, there was one deployment on a youth in Movement Control, as well as a deployment in Unit RS. At BJNH, youth with developmental disabilities were affected in one deployment that occurred in Unit NO, otherwise known as the HOPE Center, and another in Unit X, which houses youth dispositioned to Secure Youth Treatment Facility (SYTF). According to Probation's phase out plan, some of the next units that will eliminate OC will include MOU units, with BJNH phase out planned on March 31, 2023, and Central's MOU phase out on April 30, 2023. Housing classifications for BJNH indicate that youth with developmental disabilities are housed on Unit Q, which has been identified for elimination on May 31, 2023.

POC staff continue to make follow up visits to Central Juvenile Hall to verify housing classifications related OC use.

Visit	Date of Visit to CJH
1	January 24, 2023
2	January 30, 2023
3	February 7, 2023
4	February 16, 2023
5	February 23, 2023

During the February 7, 2023 visit, one significant discrepancy was found between the unit classification document and practice. A youth with an SYTF disposition was reportedly housed within the MOU for several days. During that time, the housing protocols were not amended to acknowledge the accommodation of this youth at Central, the staff reported concern at the appropriateness of the housing, and furthermore, the youth's presence in the facility was incorrectly categorized within the population statistics as a youth pending disposition. Feedback was provided to Probation regarding the incorrect categorization and reporting of data which led to revised daily Population Statistics reports.

During the POC's visit to Central on February 16, 2023, Probation staff on multiple units reported information that was not reported to the POC in housing protocols as previously provided. These discrepancies include the following:

- Unit XY was moved into Unit O. Staff reported that they believed the move may have happened as early as Thursday, February 9, 2023.
- Unit XY also reported being utilized as housing an overflow of youth from Unit CD, which they reported causing fights due to mixing youth with diverse supervision needs.
- Receiving is only classified as Transportation Pit Stop, but is reportedly being used to house youth in quarantine as overflow from Unit W.

While Probation acknowledged and corrected the housing change of location for Girls ESU/Girls CARE (formerly housed in unit XY), the same discrepancies identified during the visit that on February 23, 2023, there continued to be variances between the housing classification documents shared with the POC and the actual reported housing of youth:

- Staff assigned to the Girls ESU/Girls CARE (formerly housed in unit XY and currently housed on unit O) reported that the unit is being utilized for overflow from the other girls unit.
- The Receiving Unit, while labeled solely as a Transportation Pit Stop, continued to house the overflow of intakes for Unit W, and staff reported concern that since it was functioning in this

manner, there is a possibility of housing youth with developmental disabilities, though none were housed there at the time of the visit.

Housing discrepancies highlight the importance of data accuracy and tracking of youth by demographics across all facilities. The POC will continue to make site visits to both juvenile halls to verify housing classifications of youth.

The discrepancies that currently exist between Probation's and OIG's timelines for phase out bring the continued need to provide oversight to ensure the continued momentum of the elimination of OC at both juvenile hall facilities. The POC will analyze and report on OC use and phase-out in public meetings and in reports, providing transparency around use of force interventions used in Probation's detention facilities and highlighting importance of Probation tracking and sharing quality data with oversight bodies and the public.

Appendix

1) Barry J. Nidorf Juvenile Hall Unit Classification received on 2/2/23

Barry J. Nidorf Juvenile Hall
HOUSING PROTOCOLS

Division	Unit	Gender	Age Range	Capacity	Description of Unit Housing Criteria	
II	A	MALE	15-16+	20	Level 3 male youth, NODSP, camp ordered overflow, and court ordered drug program. No SYTF, DJJ, or UNFIT youth.	
II	B	MALE	15-16+	20	Level 3 male youth, NODSP, camp ordered overflow, and court ordered drug program. No SYTF, DJJ, or UNFIT youth.	
II	C	MALE	14-18	20	Closed	
II	D	MALE	14-18	20	Closed	
II	E	MALE	17-18	19	Closed	
II	F	MALE	17-18	18	Closed	
II	G	N/A	17-18	15	Level 3 male youth, NODSP, camp ordered overflow, county jail deferred, and court ordered drug program. No SYTF, DJJ, or UNFIT youth.	
II	H	N/A	17-18	17	Level 3 male youth, NODSP, camp ordered overflow, county jail deferred, and court ordered drug program. No Proposition 57, DJJ, or UNFIT youth.	
II	J	MALE	14 to 16	20	Level 3 male youth, NODSP, camp ordered overflow, and court ordered drug program. No SYTF, DJJ, or UNFIT youth.	
II	K	MALE	12 to 14	18	Level 3 male youth, NODSP, camp ordered overflow, and court ordered drug program. No SYTF, DJJ, or UNFIT youth.	
I	L	MALE	16 to 18+	17	Level 3 male youth, NODSP, camp ordered overflow, county jail deferred, and court ordered drug program. No Proposition 57, DJJ, or UNFIT youth.	
I	M	MALE	12 to 16+	16	Post COVID Protocols/Unit Transfer Pending	
III	N	MALE	HOPE CENTER	14-20	18	Healing, Opportunities and Positive Engagement (HOPE) Center: Temporary housing and De-escalation area for youth who are assigned to the Compound unit. SSP's
III	O	MALE	HOPE CENTER	14-20	19	Healing, Opportunities and Positive Engagement (HOPE) Center: Temporary housing and De-escalation area for youth who are assigned to the Compound unit.
III	R	MALE		14-18	20	Closed
III	S	MALE		14-18	20	Closed
III	T	MALE		16 - 20	18	High Risk Offender (HRO): Male youth sentenced to SYTF
III	V	MALE		18 - 24	19	High Risk Offender (HRO): Male youth sentenced to SYTF
IV	W1	MALE		14-17	20	High Risk Offender (HRO): Male youth actively going through Fitness/Transfer setting proceedings in juvenile court, MH Level 3, SYTF Exposure, and 707(B)
IV	W2	MALE		18 +	20	High Risk Offender (HRO): Male youth actively going through Fitness/Transfer setting proceedings in juvenile court, MH Level 3, SYTF Exposure, and 707(B)
IV	W3	MALE	HOPE CENTER	ANY	4	Healing, Opportunities and Positive Engagement (HOPE) Center: College Prep/AA Degree Program and De-escalation area for youth who are assigned to the Compound unit. SSP Adm. Assigned
IV	X1	MALE		18-25	20	High Risk Offender (HRO): Male youth ordered SYTF, SYTF order
IV	X2	MALE		14-18+	20	High Risk Offender (HRO): Male youth ordered SYTF, SYTF order
IV	Y1	MALE		15-18+	20	DJJ returnees; High-Risk Offender (HRO): Male youth sentenced to SYTF
IV	Y2	MALE		14-18	20	High Risk Offender (HRO): Male youth actively going through Fitness/Transfer setting proceedings in juvenile court, MH Level 3, (17+Overflow).
IV	Y3	MALE		15-18+	4	Healing, Opportunities, and Positive Engagement (HOPE) Center: College Prep/AA Degree Program and De-escalation area for youth who are assigned to the Compound unit. SSP Adm. Assigned - Overflow
IV	Z1	MALE		18 +	20	Closed
IV	Z2	MALE		18 +	20	Closed
III	P	MALE		17-18	26	MEDICAL OVERFLOW
III	Q	MALE	DD	15-18 +	10	Compound DD Youth- Regional Center Clients (HRO): Male youth who are currently listed as Developmentally Disabled (DEV/DIS), Level 3, youth who are actively going through Fitness/Transfer Setting in juvenile court, 707(B).
I	MOU	UNISEX		ALL	13	All youth with medical needs or special orders

2) Central Juvenile Hall Unit Classification received on February 3, 2023

The Central Juvenile Hall
HOUSING PROTOCOLS

Revised 2/3/2023

Division	Unit	Gender		Age Range	Capacity	Description of Unit Housing Criteria
1	Receiving	UNISEX				Vacant for repair
4	A	MALE	DD	14-18	14	Regional Center Clients (High Needs): Male youth who are currently listed as Developmentally Disabled (DEV/DIS), Level 3, youth
4	B	MALE	DD	14-18+	14	Regional Center Clients (High Needs): Male youth who are currently listed as Developmentally Disabled (DEV/DIS), Level 3, youth
4	BOYS CARE	MALE	CARE	14-18	12	C.A.R.E. Unit: Short-term stabilization unit for emotionally challenged youth. No Level 3, SYTF, DJJ, or UNFIT youth. NOTE - Population shall not exceed 12 youth.
3	Girls Care	FEMALE	CARE	12-18+	12	Vacant for repair
3	C	FEMALE		14-18+	12	High Risk Offender (HRO): Female youth actively going through Fitness/Transfer setting proceedings in juvenile court, MH Level 3, DJJ, SYTF, and UNFIT, Level 3 female youth (specialized supervision plan), NODSP, CAMPN, CAMPM, fitness/trail setting, or regional center clients awaiting transfer, SYTF, and UNFIT housing.
3	D	FEMALE		17-18+	15	High Risk Offender (HRO): Female youth actively going through Fitness/Transfer setting proceedings in juvenile court, MH Level 3, DJJ, SYTF, and UNFIT, Level 3 female youth (specialized supervision plan), NODSP, CAMPN, CAMPM, fitness/trail setting, or regional center clients awaiting transfer, SYTF, and UNFIT housing.
	E	MALE				Vacant for repair
	F	MALE				Vacant for repair
	G	MALE				Vacant for repair
	H	MALE				Vacant for repair
4	J	UNISEX	BESU	14-18	12	Enhanced Supervision Unit: Level 3 male youth, NODSP, and DKC Placements. No SYTF, DJJ, or UNFIT youth.
	O	MALE		14-18	12	Vacant for repair
6	K	MALE		15-17	20	Level 3 male youth, NODSP, camp ordered overflow, county jail deferred, and court ordered drug program. No Proposition 57, DJJ, or UNFIT youth. (overflow for PQ)
6	L	MALE		17-18+	20	Level 3 male youth, NODSP, camp ordered overflow, county jail deferred, and court ordered drug program. No Proposition 57, DJJ, or UNFIT youth. (overflow for R/S)
	M	MALE			20	Transportation Pit Stop
	N	MALE			20	Transportation Pit Stop
5	P	MALE		15-17	14	Level 3 male youth, NODSP, camp ordered overflow, county jail deferred, and court ordered drug program. No Proposition 57, DJJ, or UNFIT youth.
5	Q	MALE		15-17	13	Level 3 male youth, NODSP, camp ordered overflow, county jail deferred, and court ordered drug program. No Proposition 57, DJJ, or UNFIT youth.
6	R	MALE		16-18+	14	Level 3 male youth, NODSP, camp ordered overflow, county jail deferred, and court ordered drug program. No Proposition 57, DJJ, or UNFIT youth.
6	S	MALE		16-18+	14	Level 3 male youth, NODSP, camp ordered overflow, county jail deferred, and court ordered drug program. No Proposition 57, DJJ, or UNFIT youth.
	T	NA				Permanently Closed
	V	NA				Permanently Closed
1	W1	UNISEX		15-18	20	ISOLATION Unit - for youth positive with Covid 19 who must be isolated in the facility.
1	W2	UNISEX		15-18	20	Receiving - Intake - All youth Pending medical clearance
3	XIY	FEMALE	GESU/GCARE	12-18+	14	ESU-Enhanced Supervision Unit: Level 3 female youth, NODSP, Regional Center Clients, and DKC Placements. No SYTF, DJJ, or UNFIT youth. C.A.R.E. Unit: Short-term stabilization unit for emotionally challenged youth. No Level 3, SYTF, DJJ, or UNFIT youth. NOTE - Population shall not exceed 12 youth.
5	MOU	UNISEX		ALL	8	All youth with medical needs or special orders and youth who are administratively assigned. NOTE: Youth found positive for COVID 19 will be housed here until cleared by JCJS

3) Central Juvenile Hall Unit Classification received on February 9, 2023

The Central Juvenile Hall
HOUSING PROTOCOLS

Revised 2/8/2023

Division	Unit	Gender		Age Range	Capacity	Description of Unit Housing Criteria
1	Receiving	UNISEX				Transportation Pit Stop
4	A	MALE	DD	14-18	14	Regional Center Clients (High Needs): Male youth who are currently listed as Developmentally Disabled (DEV/DIS), Level 3, youth
4	B	MALE	DD	14-18+	14	Regional Center Clients (High Needs): Male youth who are currently listed as Developmentally Disabled (DEV/DIS), Level 3, youth
4	BOYS CARE	MALE	CARE	14-18	12	C.A.R.E. Unit: Short-term stabilization unit for emotionally challenged youth. No Level 3, SYTF, DJJ, or UNFIT youth. NOTE - Population shall not exceed 12 youth.
3	Girls Care	FEMALE	CARE	12-18+	12	Vacant for repair
3	C	FEMALE		14-18+	14	High Risk Offender (HRO): Female youth actively going through Fitness/Transfer setting proceedings in juvenile court, MH Level 3, DJJ, SYTF, and UNFIT. Level 3 female youth (specialized supervision plan), NODSP, CAMPN, CAMPM, fitness/trail setting, or regional center clients awaiting transfer, SYTF, and UNFIT housing.
3	D	FEMALE		17-18+	14	High Risk Offender (HRO): Female youth actively going through Fitness/Transfer setting proceedings in juvenile court, MH Level 3, DJJ, SYTF, and UNFIT. Level 3 female youth (specialized supervision plan), NODSP, CAMPN, CAMPM, fitness/trail setting, or regional center clients awaiting transfer, SYTF, and UNFIT housing.
	E	MALE				Vacant for repair
	F	MALE				Vacant for repair
	G	MALE				Vacant for repair
	H	MALE				Vacant for repair
4	J	UNISEX		14-18	16	Enhanced Supervision Unit: Level 3 male youth, NODSP, and DKC Placements. No SYTF, DJJ, or UNFIT youth.
	O	MALE	BESU	14-18	14	Vacant for repair
6	K	MALE		15-17	20	Level 3 male youth, NODSP, camp ordered overflow, county jail deferred, and court ordered drug program. No Proposition 57, DJJ, or UNFIT youth. (overflow for P/Q)
6	L	MALE		17-18+	20	Level 3 male youth, NODSP, camp ordered overflow, county jail deferred, and court ordered drug program. No Proposition 57, DJJ, or UNFIT youth. (overflow for R/S)
	M	MALE			20	Vacant for repair
	N	MALE			20	Vacant for repair
5	P	MALE		15-17	14	Level 3 male youth, NODSP, camp ordered overflow, county jail deferred, and court ordered drug program. No Proposition 57, DJJ, or UNFIT youth.
5	Q	MALE		15-17	14	Level 3 male youth, NODSP, camp ordered overflow, county jail deferred, and court ordered drug program. No Proposition 57, DJJ, or UNFIT youth.
6	R	MALE		16-18+	14	Level 3 male youth, NODSP, camp ordered overflow, county jail deferred, and court ordered drug program. No Proposition 57, DJJ, or UNFIT youth.
6	S	MALE		16-18+	14	Level 3 male youth, NODSP, camp ordered overflow, county jail deferred, and court ordered drug program. No Proposition 57, DJJ, or UNFIT youth.
	T	NA				Permanently Closed
	V	NA				Permanently Closed
1	W1	UNISEX		15-18	19	ISOLATION Unit - for youth positive with Covid 19 who must be isolated in the facility.
1	W2	UNISEX		15-18	19	Receiving - Intake - All youth Pending medical clearance
3	XIV	FEMALE	GESU/ GCARE	12-18+	16	ESU-Enhanced Supervision Unit: Level 3 female youth, NODSP, Regional Center Clients, and DKC Placements. No SYTF, DJJ, or UNFIT youth. C.A.R.E. Unit: Short-term stabilization unit for emotionally challenged youth. No Level 3, SYTF, DJJ, or UNFIT youth. NOTE - Population shall not exceed 12 youth.
5	MOU	UNISEX		ALL	11	All youth with medical needs or special orders and youth who are administratively assigned. NOTE: Youth found positive for COVID 19 will be housed here until cleared by JCJS

4) Central Juvenile Hall Unit Classification received on February 18, 2023

The Central Juvenile Hall
HOUSING PROTOCOLS

Revised 2/9/2023

Division	Unit	Gender		Age Range	Capacity	Description of Unit Housing Criteria
1	Receiving	UNISEX				Transportation Pit Stop
4	A	MALE	DD	14-18	14	Regional Center Clients (High Needs): Male youth who are currently listed as Developmentally Disabled (DEV/DIS), Level 3, youth
4	B	MALE	DD	14-18+	14	Regional Center Clients (High Needs): Male youth who are currently listed as Developmentally Disabled (DEV/DIS), Level 3, youth
4	BOYS CARE	MALE	CARE	14-18	12	C.A.R.E. Unit: Short-term stabilization unit for emotionally challenged youth. No Level 3, SYTF, DJJ, or UNFIT youth. NOTE - Population shall not exceed 12 youth.
3	Girls Care	FEMALE	CARE	12-18+	12	Vacant for repair
3	C	FEMALE		14-16+	14	High Risk Offender (HRO): Female youth actively going through Fitness/Transfer setting proceedings in juvenile court, MH Level 3, DJJ, SYTF, and UNFIT. Level 3 female youth (specialized supervision plan), NODSP, CAMPN, CAMPM, fitness/trail setting, or regional center clients awaiting transfer, SYTF, and UNFIT housing.
3	D	FEMALE		17-18+	14	High Risk Offender (HRO): Female youth actively going through Fitness/Transfer setting proceedings in juvenile court, MH Level 3, DJJ, SYTF, and UNFIT. Level 3 female youth (specialized supervision plan), NODSP, CAMPN, CAMPM, fitness/trail setting, or regional center clients awaiting transfer, SYTF, and UNFIT housing.
	E	MALE				Vacant for repair
	F	MALE				Vacant for repair
	G	MALE				Vacant for repair
	H	MALE				Vacant for repair
4	J	UNISEX	Boys ESU	14-18	16	Enhanced Supervision Unit: Level 3 male youth, NODSP, and DKC Placements. No SYTF, DJJ, or UNFIT youth.
3	O	FEMALE	GESU/GCARE	12-18+	16	ESU-Enhanced Supervision Unit: Level 3 female youth, NODSP, Regional Center Clients, and DKC Placements. No SYTF, DJJ, or UNFIT youth.
6	K	MALE		15-17	20	Level 3 male youth, NODSP, camp ordered overflow, county jail deferred, and court ordered drug program. No Proposition 57, DJJ, or UNFIT youth. (overflow for PQ)
6	L	MALE		17-18+	20	Level 3 male youth, NODSP, camp ordered overflow, county jail deferred, and court ordered drug program. No Proposition 57, DJJ, or UNFIT youth. (overflow for R/S)
	M	MALE			20	Vacant for repair
	N	MALE			20	Vacant for repair
5	P	MALE		15-17	14	Level 3 male youth, NODSP, camp ordered overflow, county jail deferred, and court ordered drug program. No Proposition 57, DJJ, or UNFIT youth.
5	Q	MALE		15-17	14	Level 3 male youth, NODSP, camp ordered overflow, county jail deferred, and court ordered drug program. No Proposition 57, DJJ, or UNFIT youth.
6	R	MALE		16-18+	14	Level 3 male youth, NODSP, camp ordered overflow, county jail deferred, and court ordered drug program. No Proposition 57, DJJ, or UNFIT youth.
6	S	MALE		16-18+	14	Level 3 male youth, NODSP, camp ordered overflow, county jail deferred, and court ordered drug program. No Proposition 57, DJJ, or UNFIT youth.
	T	NA				Permanently Closed
	V	NA				Permanently Closed
1	W1	UNISEX		15-18	19	ISOLATION Unit - for youth positive with Covid 19 who must be isolated in the facility.
1	W2	UNISEX		15-18	19	Receiving - Intake - All youth Pending medical clearance
3	XIY	FEMALE	GESU/GCARE	12-18+	16	Vacant for repair
5	MOU	UNISEX		ALL	11	All youth with medical needs or special orders and youth who are administratively assigned. NOTE: Youth found positive for COVID 19 will be housed here until cleared by JCJS