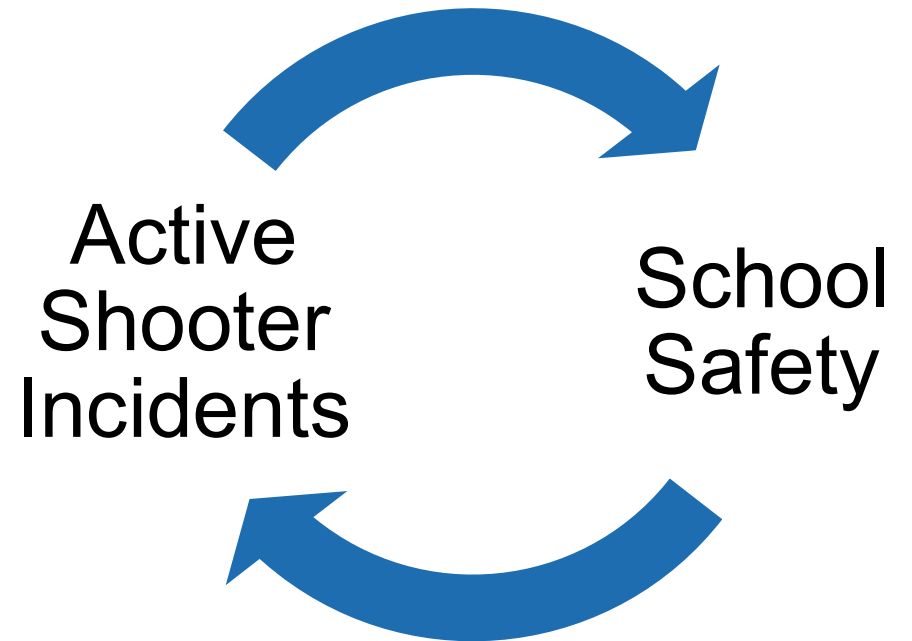
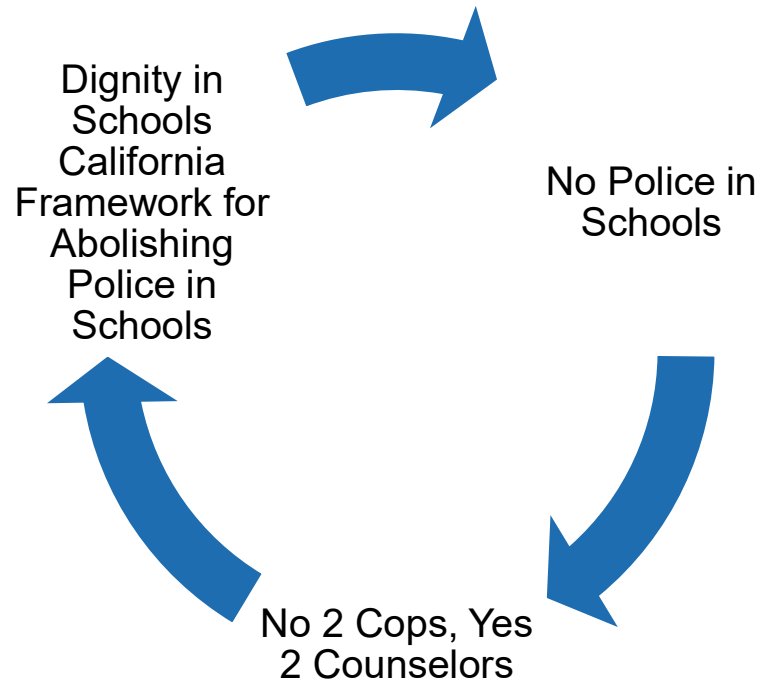


# Redefining the Narrative

Reimagining the Role of Law  
Enforcement on School Campuses



# Historical Roots



# Harmful Patterns

---

Criminalization

---

School to Prison Pipeline

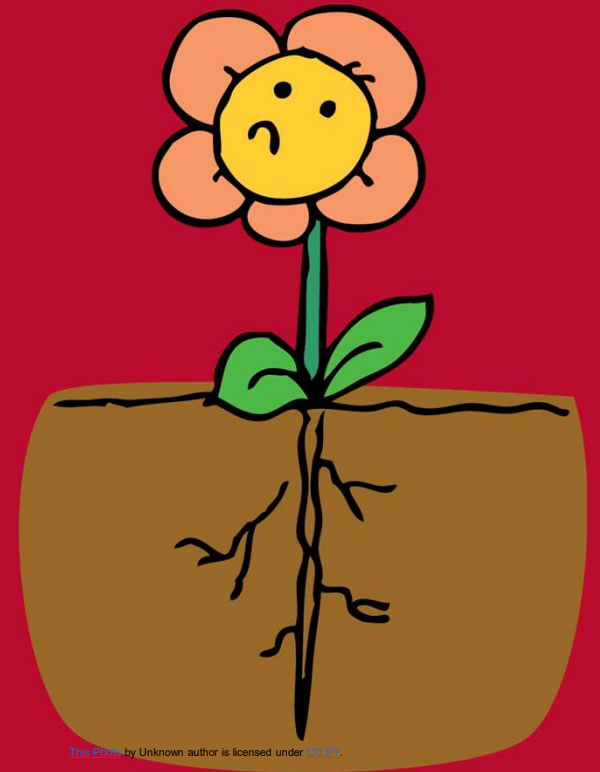
---

Discriminatory Practices

---

Increased Arrests

---



Los Angeles County  
Office of Education

# Some Data...

- Black students are 3x more likely to be referred to law enforcement compared to white students.
- Black girls are 6% of California's female student population but 18% of female student arrests.
- Latino boys are 28% of California's students but 44% of student arrests.
- Students with disabilities are 11% of California's students but 26% of student arrests.
- Black and Latino boys with disabilities are 5% percent of California's students but 13% of referrals to law enforcement and 15% of school arrests.
- Often seems to reflect what we see in the larger community.

California Racial and Identity Profiling Advisory Board



**Los Angeles County**  
**Office of Education**



# Reimagining Law Enforcement Presence in Schools



Los Angeles County  
Office of Education

# Shifting the Narrative

- Clearly Defined Role
- Establishing Appropriate Boundaries
- Effective and Frequent Communication
- Collaborative Relationships
- Use of Data to Drive the Work
- \*\* Training, Training, Training.



# Clearly Defined Role



Mutually  
agreed Upon



Reviewed  
Annually



Written in the  
Contract/MOU



Los Angeles County  
Office of Education



# Collaborative Relationships

- “Intentional Collaboration”
- Regular Team Meetings
- Part of School Community
- Engaged in School Activities/ Community Events
- Build Trust





# Possible Areas of Involvement

---

- School-wide Trainings
- Campus Safety
- Comprehensive Safe School Planning
- Active Shooter Drills
- School Climate Space

\*\*Serve as Liaisons



# Data Use for Decision Making



# Critical Component-Training

- Youth Mental Health First Aid
- Trauma Informed/ACES
- Equity and Social Justice Work
- Implicit Bias
- Youth Mindsets and Behaviors
- Crisis Response

**IMPORTANT**



- 
- Jewel Forbes
  - Project Director II, Mental Health and School Counseling
  - [Forbes\\_jewel@laoe.edu](mailto:Forbes_jewel@laoe.edu)
  - 562 922-6284

