



MARK PESTRELLA, Director

**COUNTY OF LOS ANGELES**  
**DEPARTMENT OF PUBLIC WORKS**

*"To Enrich Lives Through Effective and Caring Service"*

900 SOUTH FREMONT AVENUE  
ALHAMBRA, CALIFORNIA 91803-1331  
Telephone (626) 458-5100  
<http://dpw.lacounty.gov>

ADDRESS ALL CORRESPONDENCE TO:  
P.O. BOX 1460  
ALHAMBRA, CALIFORNIA 91802-1460

IN REPLY PLEASE  
REFER TO FILE

June 23, 2026

The Honorable Board of Supervisors  
County of Los Angeles  
383 Kenneth Hahn Hall of Administration  
500 West Temple Street  
Los Angeles, California 90012

Dear Supervisors:

**PUBLIC HEARING**  
**ENVIRONMENTAL SERVICES CORE SERVICE AREA**  
**SEWER SERVICE CHARGE ANNUAL REPORT FOR**  
**THE CONSOLIDATED SEWER MAINTENANCE DISTRICT AND**  
**THE MARINA SEWER MAINTENANCE DISTRICT**  
**(ALL SUPERVISORIAL DISTRICTS)**  
**(4-VOTES)**

**SUBJECT**

Public Works is seeking Board approval to adopt the Sewer Service Charge Annual Report for Fiscal Year 2026-27 to allow the Consolidated Sewer Maintenance District and the Marina Sewer Maintenance District to continue collecting the sewer service charge through the annual property tax roll for Fiscal Year 2026-27.

**IT IS RECOMMENDED THAT THE BOARD:**

**AFTER THE PUBLIC HEARING:**

1. Find that the proposed actions are exempt from the provisions of the California Environmental Quality Act for the reasons stated in this Board letter and in the record of this reporting.
2. Consider all objections and protests against the proposed Sewer Service Charge Annual Report for Fiscal Year 2026-27 for the Consolidated Sewer Maintenance District and the Marina Sewer Maintenance District.
3. To the extent that no majority protest against the Sewer Service Charge Annual Report for Fiscal

Year 2026-27 exists:

- a. Adopt the Sewer Service Charge Annual Report for Fiscal Year 2026-27 for the Consolidated Sewer Maintenance District and the Marina Sewer Maintenance District.
- b. Upon adoption, instruct the Executive Officer of the Board to file with the Auditor-Controller before August 10, 2026, a copy of the Sewer Service Charge Annual Report for Fiscal Year 2026-27, along with a signed statement by the Executive Officer of the Board that the report has been adopted by the Board.
- c. Instruct the Auditor-Controller, upon receipt of the adopted Sewer Service Charge Annual Report for Fiscal Year 2026-27 from the Executive Officer of the Board, to enter the amounts of the charges against the respective lots or parcels of land as they appear on the current assessment roll.
4. If a majority written protest against the proposed Sewer Service Charge Annual Report for Fiscal Year 2026-27 exists, the Board may adopt, revise, change, reduce, or modify any charge, or overrule any or all objections, or alternatively refer the item back to Public Works. If the Sewer Service Charge Annual Report is not adopted, the sewer service charge for the Consolidated Sewer Maintenance District, its zones, and the Marina Sewer Maintenance District shall be collected separately from the annual property taxes and shall not constitute a lien against any parcel of land.

#### **PURPOSE/JUSTIFICATION OF RECOMMENDED ACTION**

The purpose of the recommended actions is to adopt the Sewer Service Charge (SSC) Annual Report for Fiscal Year 2026-27 (Enclosure A), find that they are not subject to the California Environmental Quality Act (CEQA), and allow the Consolidated Sewer Maintenance District (CSMD) and the Marina Sewer Maintenance District (MSMD) (hereinafter collectively referred to as the Districts) to continue to collect their needed operating revenue with the annual property taxes for Fiscal Year 2026-27.

The annual SSC for the following zones of the CSMD are recommended to remain at their current Fiscal Year 2025-26 levels: Foxpark Zone, Summit Road Zone, Malibu Mesa Zone, and Brassie Lane Zone.

Based on increases approved by the Board on June 23, 2020, the Aneta Zone, located in the unincorporated community of Del Rey in the Second Supervisorial District; the Lake Hughes Zone, located in the unincorporated community of Lake Hughes in the Fifth Supervisorial District; and the Trancas Zone, located in the City of Malibu in the Third Supervisorial District, will implement Consumer Price Index increases as follows: Aneta Zone (GB1), a rate increase of \$7, from \$210 to \$217 per sewage unit; Lake Hughes Zone (GC9), a rate increase of \$42, from \$1,223 to \$1,265; and Trancas Zone (GC4), a rate increase of \$114, from \$3,339 to \$3,453 in Fiscal Year 2026-27.

Based on increases approved by the Board on June 24, 2025, the CSMD, Accumulative Capital Outlay (ACO) Fund, Malibu Zone, Topanga Zone, and the MSMD will implement annual rate increases as follows:

- a. CSMD (GA9), rate increase of \$9, from \$49.50 to \$58.50 per sewage unit;
- b. ACO (J14), rate increase of \$5, from \$15 to \$20 per sewage unit;
- c. Malibu Zone of the CSMD (GB8), rate increase of \$500, from \$2,758 to \$3,258 per sewage unit;
- d. Topanga Zone of CSMD (GC3), rate increase of \$100, from \$750 to \$850 per sewage unit;

e. MSMD (GC6), rate increase of \$85, from \$275 to \$360 in Fiscal Year 2026-27.

The Districts are not "special districts" as that term is defined in State law. Rather, the Districts were established for purposes of collecting a service charge directly from affected property owners, pursuant to Section 5470 et seq. of the Health and Safety Code and Title 20 of the Los Angeles County Code. The established territory of the Districts spans significant parts of 38 cities and unincorporated areas.

The Districts do not receive any General Fund revenue. Instead, the Board has made a finding that the most equitable means to raise revenue is to levy an SSC based on the land use of each parcel of property within the Districts.

The CSMD's base annual service charge of \$58.50 per sewage unit is for the operation and maintenance of the wastewater collection system within its established service territory. There is also a \$20-per-sewage-unit charge to fund ACO projects, such as pipe repair, rehabilitation or in-kind replacement, relief sewers, major improvements to sewage pump stations, and the Condition Assessment Program.

The MSMD's base annual service charge of \$360 per sewage unit is for the operation and maintenance of the wastewater collection system within the Marina del Rey District and includes the costs associated with wastewater treatment carried out by the City of Los Angeles under an agreement previously approved by the Board.

There are nine zones within the CSMD, which receive special services that are distinct from the general services provided throughout the CSMD. Consequently, properties within these nine zones are assessed an additional charge.

### **Implementation of Strategic Plan Goals**

These recommendations support the County Strategic Plan: North Star 2, Foster Vibrant and Resilient Communities, Focus Area Goal D, Sustainability, Strategy i, Climate Health, by improving the environmental, economic, and social well-being of our communities while maximizing and leveraging resources through the collection of adequate revenue to provide for the maintenance of the sewer infrastructure in a manner that protects public health and safety, enhances the environment, and protects and conserves the water resources of our communities.

### **FISCAL IMPACT/FINANCING**

There will be no impact to the County General Fund.

The collection of the SSCs on the tax roll is a cost-effective means for generating sufficient revenue to finance the operation and maintenance costs of the Districts, the ACO Fund of CSMD, and the nine zones of the CSMD. Revenues from the SSC will be included in the Sewer Maintenance Districts Funds (GA9, GB1, GB4, GB8, GC2, GC3, GC4, GC5, GC6, GC9, GD2, and J14; Revenue Sources 9570 and 9614) in Fiscal Year 2026-27 Budgets.

In addition, commencing in Fiscal Years 2022-23 through 2027-28 for the Aneta Zone, Fiscal Years 2024-25 through 2027-28 for the Lake Hughes Zone and Trancas Zone, and Fiscal Years 2028-29 through 2029-30 for the CSMD and the ACO Fund, the additional charges may be increased annually for inflation based on (1) the Consumer Price Index for all urban consumers in the Los

Angeles-Long Beach-Anaheim Area, or (2) the increase in the cost of providing the required services for which the fee is collected, whichever is lesser, as confirmed by the Auditor-Controller.

### **FACTS AND PROVISIONS/LEGAL REQUIREMENTS**

These recommended actions are required to reauthorize annual SSC rates for the various funds of the Districts and allow the collection of these charges with the annual property taxes in Fiscal Year 2026-27.

Pursuant to Section 5473 of the Health and Safety Code, the Districts are required to prepare and file with the Executive Officer of the Board a written report (SSC Annual Report) containing a description of each parcel receiving services and the amount of charge for each parcel for the subsequent year. Enclosed is a copy of the Sewer Maintenance – Tax Rate Area Report and Boundary Maps (Enclosure B), which identifies the parcels within the Districts and nine zones of the CSMD that are subject to the charges.

In accordance with Section 5473.1 of the Health and Safety Code, the notice of filing of the SSC Annual Report and of a time and place of hearing thereon was published once a week for two successive weeks in a newspaper of general circulation pursuant to Section 6066 of the Government Code.

Section 5473.2 of the Health and Safety Code requires that the Board consider all objections or protests, if any, to the SSC Annual Report. In the event of that protest is made by the owners of a majority of separate parcels of property, the SSC Annual Report for Fiscal Year 2026-27 shall not be adopted, and the charges shall be collected separately from the tax roll and shall not constitute a lien against any parcel or parcels of land.

Section 5473.3 of the Health and Safety Code provides that upon the conclusion of the hearing, the Board may adopt, revise, change, reduce, or modify any charge or overrule any or all objections and make a determination upon each charge as described in the report, which determination shall be final.

Section 5473.4 of the Health and Safety Code requires that on or before the tenth day of August of each year, the Executive Officer of the Board must file with the Auditor-Controller a copy of the SSC Annual Report for Fiscal Year 2026-27 with a signed statement indicating that the report has been adopted by the Board.

If the Board adopts the SSC Annual Report, the Auditor-Controller must enter the amounts of the charges against the respective lots or parcels of land as it appears on the current assessment roll.

The Notice of Public Hearing relating to this matter has been reviewed and approved as to form by County Counsel.

### **ENVIRONMENTAL DOCUMENTATION**

The recommended actions are not subject to CEQA because they are activities that are excluded from the definition of a project by Section 21065 of the California Public Resources Code and Section 15378, Subdivision (b) of the State CEQA Guidelines. This proposed action to adopt the

SSC Annual Report with SSC rates previously approved by the Board on June 23, 2020, and June 24, 2025, would create a government funding mechanism that does not involve any commitment to a specific project that may result in a potentially significant impact on the environment.

**IMPACT ON CURRENT SERVICES (OR PROJECTS)**

Approval of the SSC Annual Report with the preapproved SSC increases will provide for the collection of revenue necessary for the maintenance of wastewater facilities within the territory of the Districts.

**CONCLUSION**

Please return one adopted copy of this Board letter and the SSC Annual Report for Fiscal Year 2026 -27 to Public Works, Sewer Maintenance Division.

Respectfully submitted,



MARK PESTRELLA, PE

Director

MP:AN:aa

Enclosures

c: Auditor-Controller  
Chief Executive Office (Christine Frias)  
County Counsel  
Executive Office, Board of Supervisors

**LOS ANGELES COUNTY PUBLIC WORKS**  
**SEWER SERVICE CHARGE ANNUAL REPORT**

**FISCAL YEAR 2026-27**

**CONSOLIDATED SEWER MAINTENANCE DISTRICT AND  
MARINA SEWER MAINTENANCE DISTRICT**

## TABLE OF CONTENTS

<u>Contents</u>	<u>Page</u>
Introduction	3
Consolidated Sewer Maintenance District	3
Special Zones	4
Marina Sewer Maintenance District	5
Sewer Service Charge Rate Increase Based on Consumer Price Index	5
Identification of Parcels to be Charged	5
Districts and Zones	6-7

**LOS ANGELES COUNTY PUBLIC WORKS  
SEWER SERVICE CHARGE ANNUAL REPORT  
FISCAL YEAR 2026-27  
CONSOLIDATED SEWER MAINTENANCE DISTRICT AND  
MARINA SEWER MAINTENANCE DISTRICT**

**INTRODUCTION**

The County of Los Angeles Sewer Maintenance Districts (Districts) are made up of the Consolidated Sewer Maintenance District (CSMD) and the Marina Sewer Maintenance District (MSMD). Together, the Districts' systems serve more than 500,000 parcels and a population of approximately 2 million people within the unincorporated areas of the County and 38 member cities. The system includes over 4,600 miles of sanitary sewers, 88 pump stations, and 4 water pollution control plants.

It is essential that operation and maintenance of these sewage collection and treatment systems be continued without interruption to protect public health and safety. Funding must be available to pay the costs of repairing and cleaning sewers, operating pumping stations and water pollution control plants, and to provide ongoing preventive maintenance.

In July 1978, the Board adopted ordinances to collect the necessary funding for the Districts, including the Zones within the CSMD, on the tax roll as a sewer service charge (SSC).

**CONSOLIDATED SEWER MAINTENANCE DISTRICT**

Authorization for the existing annual SSC for the CSMD is established in Volume 5, Title 20, Division 3, Chapter 20.40 of the Los Angeles County Code (County Code), as amended. The annual SSC levied upon each parcel of real property within the CSMD is calculated by multiplying the basic annual sewage unit charge by the number of sewage units represented by the current land use as shown in Table A of the County Code.

Beginning with Fiscal Year (FY) 2026-27, a preapproved rate increase of \$9 per sewage unit, from \$49.50 to \$58.50, as reflected in the ordinance adopted by the Board on June 24, 2025, will become effective. Multiple residential, certain commercial, and industrial properties are assessed higher amounts based on their Assessor's Use Codes.

There is also an additional \$15 per sewage unit annual charge to fund the Accumulative Capital Outlay Fund, which was first established in 1987. Beginning FY 2026-27, a preapproved rate increase of \$5 per sewage unit, from \$15 to \$20, as reflected in the ordinance adopted by the Board on June 24, 2025, will become effective. This charge allows CSMD to continue to accumulate funds to pay for and offset rising costs of pipe replacement, relief sewers, major improvements to sewage pumping stations, and conduct the Condition-Assessment Program.

## **SPECIAL ZONES**

In addition to the aforementioned assessments, there are certain areas established as zones within the CSMD that are charged additional fees. These zone fees fund special services and/or facilities required by the zone in addition to those standard services provided throughout the CSMD. There are currently nine zones within the CSMD; however, the majority of the CSMD's territory is not included within the zones.

The proposed SSC for each Zone for FY 2026-27 are unchanged from the FY 2025-26 rates, except for Aneta, Trancas, Lake Hughes, Malibu and Topanga Zones:

	CURRENT 2025-26	PROPOSED 2026-27
<b>Aneta Zone</b>	<b>\$210/sewage unit</b>	<b>\$217/sewage unit*</b>
Brassie Lane Zone	\$15.86/sewage unit	\$15.86/sewage unit
Foxpark Drive Zone (improved parcel only)	\$22.10/sewage unit	\$22.10/sewage unit (improved parcel only)
<b>Trancas Zone (improved parcel only)</b>	<b>\$ 3,339/sewage unit</b>	<b>\$3,453/sewage unit* (improved parcel only)</b>
<b>Lake Hughes Zone (improved parcel only)</b>	<b>\$1,223/sewage unit</b>	<b>\$1,265/sewage unit* (improved parcel only)</b>
<b>Malibu Zone (improved parcel only)</b>	<b>\$2,758/sewage unit</b>	<b>\$3,258/sewage unit ** (improved parcel only)</b>
Malibu Mesa Zone (improved parcel only)	\$978/sewage unit	\$978/sewage unit (improved parcel only)
Summit Road Zone	\$15.26/sewage unit	\$15.26/sewage unit
<b>Topanga Zone (improved parcel only)</b>	<b>\$750/sewage unit</b>	<b>\$850/sewage unit ** (improved parcel only)</b>

### Notes

\* Preapproved rate increases adopted by the Board on June 23, 2020

\*\*Preapproved rate increases adopted by the Board on June 24,2025

See pages 6 and 7 for descriptions of districts and zone functions.

## **MARINA SEWER MAINTENANCE DISTRICT**

The existing SSC for the MSMD is established in Chapter 20.44 of the County Code. Under these provisions, the annual SSC levied upon each possessory interest within the MSMD is computed by multiplying the amount of the sewage unit charge by the number of sewage units for the current land use as shown in Table A of the County Code. The basic annual sewage unit charge for each sewage unit is currently \$275 and beginning FY 2026-27, a preapproved rate increase of \$85 per sewage unit, from \$275 to \$360, as reflected in the ordinance adopted by the Board on June 24, 2025, will become effective.

## **SSC RATE INCREASE BASED ON CONSUMER PRICE INDEX (CPI)**

Beginning on July 1, 2022, through July 1, 2027 for Aneta Zone and July 1, 2024, through July 1, 2027 for Lake Hughes Zone and Trancas Zone and beginning on July 1, 2028 through July 1, 2029, in the CSMD and the ACO Fund, the amount of each fee may be adjusted by the lesser of: (1) the increase, if any, in the Consumer Price Index (CPI) for all urban consumers in the Los Angeles-Long Beach-Anaheim areas, as published by the U.S. Government Bureau of Labor Statistics, from March of the previous calendar year to March of the current calendar year for Aneta Zone, Lake Hughes Zone, and Trancas Zone; and from January of the previous calendar year to January of the current calendar year for the CSMD and ACO Fund, or (2) the increase, if any, in the cost of providing the service for which the fee is collected, as confirmed by the Auditor-Controller; the adjusted fee shall be rounded to the nearest dollar; provided, however, notwithstanding any of the above, no fee shall exceed the cost of providing the service for which the fee is collected.

## **IDENTIFICATION OF PARCELS TO BE CHARGED**

All parcels of real property within the 2026-27 Tax Rate Areas listed in pages 8 through 17, more particularly described in maps prepared in accordance with Section 327, Revenue and Taxation Code, and on file with the County of Los Angeles Assessor, will be charged an SSC in accordance with the County Code.

## DISTRICTS AND ZONES

<b>DISTRICTS OR ZONE</b>	<b>SUPERVISORIAL DISTRICT</b>	<b>FUNCTION</b>
CSMD	1, 2, 3, 4, 5	Operate and maintain complete sewer system; encompasses 99 percent of total system.
Aneta Zone	2	Pay disposal costs to the City of Los Angeles.
Brassie Lane Zone	5	Pay sewage conveyance costs to the City of La Verne.
Foxpark Drive Zone	1	Pay sewage conveyance costs to the City of Pomona.
Lake Hughes Zone	5	Provide funds for the operation, maintenance, and rehabilitation of the water pollution control plant.
Malibu Zone	3	Provide funds for the operation, maintenance, and rehabilitation of the water pollution control plant.
Malibu Mesa Zone	3	Provide funds for the operation, maintenance, and rehabilitation of the water pollution control plant.
Summit Road Zone	5	Pay sewage conveyance costs to the City of La Verne.
Topanga Zone	3	Pay disposal costs to Las Virgenes Municipal Water District.

<b>DISTRICT OR ZONE</b>	<b>SUPERVISORIAL DISTRICT</b>	<b>FUNCTION</b>
Trancas Zone	3	Provide funds for the operation, maintenance, and rehabilitation of the water pollution control plant.
Accumulative Capital Outlay	1, 2, 3, 4, 5	Provide for necessary sewer pipe replacement, relief sewers and upgrades to sewage pump stations, and to conduct the Condition-Assessment Program.
MSMD	2	Operate and maintain complete sewer system. Has contractual obligation with the City of Los Angeles to pay for disposal of sewage generated within the Marina del Rey service area.

Los Angeles County Public Works  
Sewer Maintenance Districts  
Tax Rate Area Report and Boundary Maps

CSMD	00141	00281	00634	00908	01021	01075	01123	01177	01232	01345	01427	01565
00053	00142	00282	00635	00932	01023	01077	01126	01179	01235	01347	01430	01566
00057	00147	00325	00636	00933	01024	01079	01127	01180	01237	01352	01434	01568
00075	00148	00330	00637	00935	01025	01080	01128	01182	01240	01353	01436	01572
00076	00150	00331	00638	00936	01026	01081	01130	01183	01242	01358	01437	01575
00077	00153	00353	00639	00940	01028	01083	01131	01185	01243	01369	01438	01576
00078	00154	00360	00640	00947	01029	01084	01132	01187	01246	01370	01470	01577
00082	00155	00364	00641	00955	01030	01087	01133	01188	01247	01371	01473	01580
00083	00156	00373	00653	00956	01032	01088	01134	01190	01248	01372	01474	01584
00084	00157	00386	00655	00964	01033	01089	01135	01191	01249	01374	01476	01585
00085	00162	00397	00656	00965	01034	01090	01136	01192	01251	01375	01481	01587
00086	00165	00405	00666	00977	01036	01091	01137	01193	01253	01380	01482	01588
00087	00166	00418	00669	00984	01037	01093	01138	01194	01255	01381	01486	01589
00088	00167	00420	00679	00985	01038	01097	01139	01196	01256	01383	01488	01592
00090	00170	00431	00699	00986	01040	01098	01140	01197	01257	01384	01495	01594
00091	00174	00439	00729	00989	01041	01099	01141	01198	01261	01385	01498	01595
00093	00175	00443	00732	00990	01043	01100	01142	01200	01263	01386	01501	01597
00094	00176	00448	00750	00991	01044	01101	01144	01202	01264	01387	01504	01600
00096	00177	00450	00763	00992	01045	01102	01146	01206	01265	01389	01505	01601
00097	00178	00508	00765	00996	01046	01104	01147	01208	01267	01395	01511	01604
00098	00185	00520	00777	00999	01047	01105	01148	01211	01268	01397	01516	01607
00099	00186	00521	00793	01000	01048	01108	01150	01213	01269	01398	01519	01609
00104	00187	00522	00801	01003	01050	01109	01153	01214	01270	01399	01520	01615
00106	00188	00526	00802	01005	01052	01110	01157	01217	01276	01400	01530	01616
00108	00191	00532	00803	01007	01057	01111	01158	01218	01278	01406	01533	01621
00112	00192	00554	00824	01009	01058	01112	01160	01220	01299	01409	01534	01623
00113	00196	00558	00826	01010	01062	01113	01161	01221	01308	01410	01540	01624
00122	00205	00567	00837	01011	01063	01114	01163	01223	01310	01411	01548	01627
00123	00223	00569	00866	01013	01064	01115	01164	01224	01311	01412	01552	01630
00124	00229	00584	00884	01014	01065	01116	01166	01225	01312	01413	01553	01633
00126	00234	00597	00885	01015	01066	01118	01169	01226	01314	01416	01557	01635
00127	00250	00603	00887	01016	01067	01119	01170	01227	01315	01417	01558	01639
00128	00261	00612	00893	01018	01068	01120	01173	01228	01318	01421	01560	01644
00130	00266	00613	00896	01019	01069	01121	01175	01229	01327	01423	01561	01647
00139	00270	00631	00906	01020	01073	01122	01176	01230	01340	01426	01563	01655

Los Angeles County Public Works  
Sewer Maintenance Districts  
Tax Rate Area Report and Boundary Maps

01658	01775	02014	02136	02219	02297	02591	02681	02885	02971	03113	03306	03415
01661	01781	02027	02139	02222	02298	02592	02682	02887	02973	03119	03315	03416
01664	01782	02031	02140	02223	02303	02593	02684	02888	02976	03122	03317	03417
01669	01783	02032	02142	02224	02306	02594	02685	02889	02979	03130	03318	03418
01671	01790	02033	02144	02226	02308	02595	02688	02890	02981	03144	03320	03419
01673	01791	02038	02150	02227	02315	02597	02691	02892	02982	03156	03329	03420
01674	01792	02039	02151	02228	02317	02598	02692	02894	02987	03157	03330	03422
01677	01810	02040	02152	02233	02322	02599	02700	02901	02988	03158	03336	03423
01683	01811	02049	02153	02239	02325	02600	02701	02902	02989	03161	03346	03426
01684	01824	02052	02156	02243	02336	02601	02703	02903	03002	03167	03348	03427
01701	01825	02054	02157	02244	02350	02603	02707	02904	03006	03179	03351	03430
01708	01826	02061	02167	02245	02369	02604	02708	02910	03011	03193	03352	03432
01710	01827	02066	02168	02246	02375	02608	02713	02913	03014	03203	03353	03461
01715	01828	02068	02172	02247	02387	02610	02715	02923	03016	03206	03354	03473
01719	01830	02084	02173	02248	02390	02611	02716	02924	03017	03209	03358	03474
01720	01831	02086	02175	02252	02392	02612	02720	02929	03018	03214	03362	03476
01722	01858	02087	02178	02253	02394	02613	02736	02933	03026	03215	03363	03486
01727	01859	02088	02179	02254	02395	02614	02738	02935	03033	03217	03365	03487
01728	01861	02090	02181	02259	02399	02618	02764	02937	03036	03219	03366	03488
01733	01945	02092	02182	02260	02467	02619	02798	02938	03038	03222	03368	03490
01735	01952	02093	02185	02261	02509	02646	02809	02939	03043	03223	03369	03500
01740	01955	02095	02187	02264	02520	02647	02811	02940	03044	03225	03371	03503
01741	01956	02096	02189	02265	02521	02653	02843	02941	03061	03226	03377	03504
01745	01964	02098	02192	02267	02522	02655	02852	02945	03063	03227	03386	03508
01754	01965	02099	02194	02269	02523	02656	02855	02946	03071	03234	03387	03511
01759	01967	02100	02195	02271	02524	02658	02856	02947	03074	03235	03388	03513
01760	01968	02102	02196	02273	02525	02659	02857	02948	03075	03237	03396	03516
01761	01971	02103	02200	02274	02526	02660	02861	02949	03076	03238	03398	03517
01762	01972	02111	02206	02275	02528	02661	02863	02951	03078	03243	03399	03518
01763	01977	02120	02207	02276	02550	02662	02864	02952	03080	03261	03402	03523
01764	01981	02126	02208	02277	02576	02665	02867	02956	03084	03272	03404	03524
01765	01984	02128	02210	02280	02577	02668	02869	02957	03097	03280	03406	03525
01767	01990	02131	02213	02288	02584	02669	02881	02964	03108	03288	03407	03526
01769	01996	02133	02216	02291	02585	02672	02883	02967	03109	03296	03408	03527
01774	01999	02135	02218	02293	02586	02677	02884	02970	03110	03302	03413	03528

Los Angeles County Public Works  
Sewer Maintenance Districts  
Tax Rate Area Report and Boundary Maps

03530	03580	03687	03781	03848	03987	04127	04248	04327	04398	04452	04529	04628
03531	03581	03688	03782	03849	03988	04129	04249	04330	04399	04454	04530	04633
03532	03582	03697	03783	03855	03992	04130	04250	04331	04400	04455	04531	04644
03533	03583	03698	03784	03888	03993	04131	04266	04332	04401	04457	04532	04645
03534	03595	03699	03785	03889	03996	04132	04267	04333	04402	04461	04533	04646
03535	03600	03700	03786	03896	03997	04133	04268	04334	04403	04462	04536	04648
03536	03603	03701	03788	03897	03998	04136	04269	04335	04405	04465	04537	04649
03537	03604	03702	03789	03900	03999	04139	04270	04336	04406	04466	04548	04650
03538	03605	03703	03797	03908	04000	04141	04271	04338	04407	04468	04549	04717
03539	03606	03704	03798	03909	04002	04142	04272	04342	04409	04471	04550	04722
03540	03607	03705	03801	03910	04008	04145	04273	04344	04411	04472	04551	04725
03541	03608	03706	03803	03917	04012	04147	04276	04345	04412	04473	04582	04735
03542	03609	03707	03806	03921	04013	04149	04284	04346	04415	04474	04583	04737
03543	03611	03719	03807	03928	04016	04153	04286	04350	04416	04475	04584	04861
03544	03614	03725	03808	03931	04029	04154	04290	04352	04419	04476	04585	04912
03546	03615	03726	03809	03941	04030	04155	04292	04353	04422	04480	04594	04916
03547	03618	03727	03812	03943	04036	04156	04293	04354	04423	04481	04597	04918
03548	03625	03728	03813	03944	04043	04169	04294	04355	04426	04482	04598	04926
03550	03633	03732	03819	03945	04052	04172	04295	04356	04427	04483	04599	04928
03551	03634	03739	03821	03948	04053	04173	04296	04360	04430	04486	04600	04929
03552	03635	03740	03822	03951	04054	04175	04297	04361	04431	04487	04601	04931
03554	03636	03741	03823	03953	04055	04177	04301	04362	04432	04488	04602	04935
03556	03637	03742	03824	03957	04060	04179	04302	04364	04433	04495	04603	04936
03558	03642	03744	03825	03960	04062	04185	04304	04368	04434	04498	04605	04938
03563	03643	03745	03826	03961	04063	04191	04305	04371	04438	04509	04606	04939
03564	03644	03747	03835	03962	04066	04195	04309	04384	04439	04515	04607	04943
03565	03645	03753	03836	03964	04070	04196	04310	04386	04440	04516	04608	04944
03566	03652	03754	03837	03968	04095	04230	04311	04387	04441	04517	04609	04947
03567	03656	03758	03838	03972	04097	04238	04312	04390	04444	04518	04611	04948
03568	03657	03763	03839	03975	04115	04239	04313	04391	04445	04521	04612	04954
03569	03662	03771	03843	03976	04117	04240	04317	04392	04446	04522	04613	04957
03572	03668	03773	03844	03977	04121	04241	04321	04393	04447	04524	04617	04964
03576	03677	03777	03845	03978	04122	04242	04324	04394	04448	04525	04623	04967
03578	03681	03778	03846	03984	04123	04244	04325	04395	04449	04526	04624	04972
03579	03682	03780	03847	03985	04126	04245	04326	04397	04450	04527	04625	04977

Los Angeles County Public Works  
Sewer Maintenance Districts  
Tax Rate Area Report and Boundary Maps

04979	05130	05198	05358	05547	05641	05694	05903	05960	06032	06226	06371	06457
04990	05133	05200	05360	05548	05645	05699	05904	05961	06033	06248	06373	06458
04991	05134	05204	05361	05549	05646	05701	05905	05963	06034	06253	06374	06459
04994	05135	05236	05362	05563	05647	05702	05906	05964	06037	06261	06375	06466
04997	05144	05237	05363	05564	05648	05703	05907	05966	06038	06262	06378	06468
05000	05149	05291	05364	05567	05650	05705	05908	05967	06039	06263	06391	06480
05001	05156	05297	05365	05568	05651	05706	05909	05968	06040	06264	06392	06481
05002	05157	05301	05366	05582	05653	05707	05910	05969	06041	06266	06395	06482
05012	05161	05306	05368	05583	05654	05708	05912	05970	06042	06269	06396	06483
05015	05164	05308	05369	05584	05655	05709	05914	05978	06043	06270	06397	06484
05017	05165	05310	05378	05585	05656	05710	05916	05980	06044	06271	06398	06485
05018	05166	05314	05415	05586	05658	05713	05917	05982	06045	06272	06399	06487
05025	05167	05319	05420	05587	05659	05714	05921	05985	06046	06285	06400	06488
05049	05168	05320	05429	05588	05660	05715	05922	05986	06047	06286	06406	06490
05062	05170	05322	05430	05589	05661	05716	05923	05987	06050	06289	06408	06491
05063	05171	05325	05433	05593	05662	05717	05925	05988	06051	06292	06410	06492
05064	05172	05326	05434	05594	05663	05728	05928	05990	06057	06296	06412	06494
05068	05174	05328	05435	05595	05664	05758	05936	05991	06058	06309	06419	06498
05075	05175	05331	05437	05609	05665	05759	05939	05992	06059	06310	06423	06501
05081	05176	05332	05447	05611	05667	05760	05940	05995	06068	06316	06425	06503
05082	05178	05333	05476	05613	05668	05761	05942	05998	06099	06318	06427	06504
05083	05179	05335	05477	05614	05671	05764	05944	05999	06100	06319	06430	06509
05088	05180	05337	05478	05616	05679	05770	05945	06001	06108	06321	06431	06511
05092	05181	05339	05479	05621	05680	05779	05946	06003	06119	06323	06432	06513
05094	05182	05340	05480	05623	05681	05780	05947	06004	06140	06324	06433	06516
05098	05183	05341	05484	05624	05682	05783	05948	06005	06141	06327	06434	06518
05102	05184	05342	05485	05625	05683	05785	05949	06007	06142	06339	06435	06519
05103	05186	05344	05489	05629	05684	05791	05951	06009	06143	06343	06439	06520
05105	05188	05346	05491	05630	05685	05798	05952	06011	06147	06350	06441	06521
05108	05189	05347	05497	05632	05687	05805	05953	06012	06159	06351	06444	06522
05113	05190	05349	05518	05633	05688	05811	05954	06014	06181	06354	06445	06527
05116	05191	05351	05519	05637	05689	05826	05956	06022	06182	06355	06446	06530
05117	05192	05352	05527	05638	05690	05900	05957	06023	06185	06357	06447	06536
05120	05194	05353	05535	05639	05692	05901	05958	06025	06195	06360	06451	06537
05123	05197	05354	05546	05640	05693	05902	05959	06027	06223	06370	06454	06538

Los Angeles County Public Works  
Sewer Maintenance Districts  
Tax Rate Area Report and Boundary Maps

06545	06695	06846	06907	07114	07272	07494	07637	07728	07966	08018	08118	08207
06548	06696	06847	06908	07115	07273	07502	07642	07776	07967	08034	08119	08209
06558	06697	06848	06909	07116	07274	07508	07643	07782	07968	08036	08120	08210
06563	06699	06849	06910	07118	07277	07542	07644	07784	07969	08038	08124	08211
06567	06700	06850	06912	07119	07278	07551	07645	07785	07970	08039	08125	08212
06576	06701	06856	06913	07124	07290	07555	07648	07797	07971	08041	08126	08214
06579	06702	06857	06914	07125	07294	07556	07649	07815	07972	08042	08131	08216
06582	06703	06858	06915	07127	07300	07562	07650	07820	07973	08043	08133	08219
06583	06706	06859	06916	07128	07324	07567	07651	07893	07975	08044	08134	08221
06584	06707	06860	06918	07129	07339	07568	07652	07896	07977	08052	08139	08223
06585	06712	06863	06934	07132	07341	07569	07653	07897	07978	08057	08142	08226
06589	06713	06866	06983	07135	07343	07571	07655	07898	07979	08062	08145	08228
06593	06721	06867	07017	07145	07346	07572	07670	07933	07980	08067	08146	08229
06594	06724	06871	07018	07147	07348	07580	07674	07934	07981	08069	08147	08230
06595	06757	06875	07056	07151	07349	07581	07675	07935	07983	08071	08149	08231
06596	06767	06878	07057	07155	07350	07584	07677	07936	07984	08073	08150	08232
06597	06772	06879	07064	07164	07351	07586	07679	07937	07985	08082	08153	08233
06600	06773	06880	07085	07177	07354	07601	07681	07939	07986	08086	08155	08234
06608	06779	06882	07087	07179	07357	07603	07682	07941	07987	08087	08156	08235
06624	06785	06883	07088	07188	07358	07604	07684	07942	07988	08088	08158	08236
06631	06794	06885	07090	07191	07359	07606	07685	07944	07990	08089	08161	08237
06633	06795	06886	07093	07209	07362	07607	07688	07946	07991	08090	08162	08239
06635	06799	06887	07094	07214	07367	07608	07692	07947	07992	08093	08167	08243
06637	06800	06888	07095	07228	07371	07609	07696	07948	07993	08095	08168	08245
06638	06802	06890	07097	07229	07372	07617	07697	07949	07995	08096	08169	08247
06641	06805	06891	07099	07230	07373	07621	07698	07950	07996	08101	08174	08248
06642	06818	06892	07100	07235	07379	07622	07699	07952	07997	08103	08175	08249
06648	06821	06893	07103	07237	07382	07623	07706	07957	07998	08107	08176	08250
06649	06823	06898	07105	07238	07405	07625	07711	07958	07999	08109	08178	08251
06665	06831	06900	07106	07255	07462	07627	07712	07959	08000	08110	08182	08252
06671	06834	06901	07108	07260	07468	07631	07713	07960	08001	08111	08193	08253
06689	06837	06902	07109	07262	07473	07632	07714	07961	08002	08113	08196	08254
06690	06841	06904	07110	07263	07485	07633	07715	07962	08010	08115	08197	08255
06693	06842	06905	07112	07265	07488	07634	07716	07963	08015	08116	08201	08256
06694	06843	06906	07113	07271	07492	07635	07727	07964	08016	08117	08204	08257

Los Angeles County Public Works  
Sewer Maintenance Districts  
Tax Rate Area Report and Boundary Maps

08258	08323	08372	08448	08500	08566	08788	09002	09065	09113	09246	09337	09407
08259	08325	08373	08451	08501	08567	08791	09003	09066	09115	09257	09339	09411
08260	08326	08374	08452	08502	08568	08794	09004	09067	09116	09260	09341	09418
08261	08327	08375	08455	08503	08569	08798	09008	09068	09117	09261	09346	09423
08262	08329	08376	08456	08504	08570	08803	09009	09069	09118	09263	09348	09426
08267	08330	08377	08457	08505	08573	08805	09010	09070	09122	09265	09349	09432
08268	08334	08379	08458	08507	08574	08806	09014	09071	09123	09266	09351	09436
08269	08335	08380	08459	08509	08575	08807	09020	09072	09171	09270	09352	09442
08270	08336	08381	08460	08510	08576	08808	09022	09073	09177	09276	09353	09451
08271	08337	08382	08462	08512	08581	08810	09025	09075	09195	09280	09354	09452
08272	08338	08383	08463	08513	08582	08812	09028	09076	09196	09281	09358	09453
08274	08340	08387	08466	08514	08597	08814	09034	09077	09197	09283	09360	09456
08280	08343	08388	08471	08515	08600	08818	09036	09079	09207	09285	09368	09457
08282	08344	08389	08472	08516	08601	08821	09037	09080	09208	09286	09369	09458
08284	08345	08391	08473	08518	08619	08822	09038	09081	09211	09287	09375	09473
08286	08347	08393	08474	08519	08624	08823	09040	09083	09212	09288	09376	09474
08287	08350	08395	08475	08521	08625	08845	09042	09085	09216	09289	09377	09479
08288	08351	08399	08477	08522	08629	08847	09044	09088	09217	09298	09378	09491
08289	08352	08400	08480	08523	08642	08857	09045	09090	09218	09300	09379	09500
08290	08353	08406	08481	08524	08645	08858	09046	09092	09219	09301	09380	09507
08291	08354	08408	08482	08527	08646	08861	09047	09094	09220	09304	09381	09517
08292	08355	08409	08483	08530	08649	08865	09048	09095	09221	09305	09382	09518
08295	08356	08431	08484	08533	08651	08866	09049	09096	09222	09308	09383	09519
08296	08357	08433	08486	08535	08652	08905	09050	09097	09224	09310	09385	09521
08297	08358	08434	08487	08536	08653	08907	09051	09098	09226	09311	09389	09522
08300	08360	08435	08488	08537	08661	08912	09052	09099	09227	09312	09390	09523
08302	08361	08436	08489	08539	08665	08913	09053	09100	09229	09313	09394	09524
08313	08363	08439	08490	08544	08679	08969	09054	09101	09230	09314	09395	09525
08314	08364	08440	08491	08548	08694	08970	09055	09102	09231	09315	09397	09529
08315	08365	08441	08492	08549	08704	08971	09056	09103	09232	09317	09399	09530
08317	08366	08442	08493	08550	08710	08972	09060	09104	09233	09319	09400	09533
08318	08367	08443	08494	08556	08762	08973	09061	09106	09235	09320	09402	09534
08320	08368	08445	08495	08559	08777	08974	09062	09107	09238	09322	09404	09538
08321	08370	08446	08496	08562	08778	08975	09063	09109	09244	09324	09405	09546
08322	08371	08447	08499	08564	08781	09000	09064	09112	09245	09327	09406	09553

Los Angeles County Public Works  
Sewer Maintenance Districts  
Tax Rate Area Report and Boundary Maps

09557	09657	09725	09781	09928	10024	10064	10108	10143	10182	10366	10449	10562
09562	09658	09726	09782	09930	10025	10068	10109	10144	10183	10372	10455	10563
09568	09661	09727	09783	09931	10026	10069	10110	10145	10184	10373	10456	10564
09569	09662	09729	09784	09932	10027	10071	10111	10146	10186	10374	10459	10566
09573	09666	09731	09785	09933	10028	10074	10112	10147	10188	10376	10461	10568
09574	09667	09732	09786	09952	10029	10075	10113	10148	10190	10377	10462	10571
09575	09669	09734	09790	09953	10030	10076	10114	10149	10196	10378	10465	10577
09579	09671	09736	09792	09965	10032	10077	10115	10150	10199	10379	10469	10582
09588	09677	09738	09793	09975	10033	10078	10116	10152	10200	10382	10474	10590
09593	09678	09741	09794	09976	10034	10079	10117	10153	10204	10383	10476	10596
09595	09680	09744	09797	09981	10035	10080	10118	10154	10208	10385	10477	10601
09598	09683	09748	09798	09982	10036	10082	10119	10155	10215	10386	10480	10605
09611	09684	09749	09804	09984	10037	10083	10120	10156	10237	10387	10484	10615
09612	09686	09751	09826	09987	10039	10084	10121	10157	10266	10388	10495	10617
09613	09687	09752	09841	09989	10040	10085	10122	10158	10269	10389	10496	10618
09614	09689	09753	09842	09990	10041	10086	10123	10159	10274	10392	10498	10634
09615	09690	09754	09852	09994	10042	10087	10124	10160	10275	10393	10499	10640
09616	09691	09755	09853	09995	10043	10088	10125	10161	10285	10394	10522	10648
09617	09693	09756	09864	09997	10044	10089	10126	10162	10287	10395	10523	10652
09618	09694	09757	09865	10000	10045	10090	10127	10164	10293	10396	10526	10655
09620	09697	09759	09869	10003	10046	10091	10128	10165	10294	10399	10527	10656
09621	09700	09762	09872	10007	10047	10092	10129	10166	10295	10400	10535	10657
09622	09701	09763	09874	10008	10048	10093	10130	10167	10299	10401	10536	10673
09623	09702	09764	09877	10010	10049	10094	10131	10168	10301	10403	10541	10674
09624	09704	09766	09878	10011	10050	10095	10132	10171	10302	10415	10542	10697
09625	09705	09767	09880	10012	10051	10096	10133	10172	10305	10419	10543	10698
09626	09706	09769	09881	10014	10052	10097	10134	10173	10306	10421	10544	10705
09627	09708	09770	09882	10015	10053	10099	10135	10174	10315	10423	10545	10721
09628	09710	09771	09883	10016	10054	10100	10136	10175	10318	10424	10547	10724
09629	09714	09772	09887	10017	10055	10101	10137	10176	10325	10429	10549	10725
09630	09718	09773	09889	10018	10056	10103	10138	10177	10328	10430	10552	10727
09631	09720	09777	09890	10019	10058	10104	10139	10178	10333	10436	10555	10732
09633	09721	09778	09893	10021	10059	10105	10140	10179	10358	10440	10556	10733
09634	09723	09779	09894	10022	10060	10106	10141	10180	10362	10447	10557	10735
09654	09724	09780	09924	10023	10061	10107	10142	10181	10365	10448	10558	10738

Los Angeles County Public Works  
Sewer Maintenance Districts  
Tax Rate Area Report and Boundary Maps

10742	10843	10926	10978	11031	11157	11276	11453	11525	11585	11699	11873	11958
10743	10844	10927	10980	11032	11158	11277	11454	11526	11587	11702	11874	11960
10746	10856	10934	10981	11033	11159	11278	11455	11533	11589	11710	11877	11963
10754	10858	10936	10982	11035	11166	11280	11457	11534	11590	11711	11878	11971
10759	10861	10937	10983	11036	11167	11281	11458	11535	11591	11713	11879	11973
10760	10862	10939	10984	11037	11168	11283	11459	11536	11594	11714	11880	11980
10761	10880	10940	10985	11038	11172	11284	11460	11538	11596	11715	11882	11981
10762	10881	10941	10987	11039	11181	11285	11462	11539	11597	11716	11884	11982
10764	10882	10944	10988	11040	11185	11288	11466	11540	11598	11717	11885	11983
10769	10885	10947	10989	11042	11186	11289	11467	11544	11599	11727	11886	11984
10771	10887	10948	10990	11046	11187	11290	11468	11545	11600	11728	11888	11995
10782	10888	10949	10991	11048	11200	11317	11469	11546	11601	11733	11889	11999
10791	10889	10950	10993	11050	11213	11325	11470	11547	11602	11738	11890	12000
10792	10892	10951	10994	11054	11216	11341	11471	11548	11603	11740	11894	12001
10793	10893	10952	10995	11055	11217	11355	11472	11549	11614	11742	11896	12002
10794	10894	10955	10996	11060	11235	11356	11473	11550	11615	11745	11897	12003
10796	10896	10956	10998	11064	11237	11362	11474	11551	11617	11747	11898	12004
10797	10897	10957	10999	11065	11238	11364	11475	11554	11618	11769	11899	12005
10809	10898	10958	11000	11073	11239	11365	11476	11559	11620	11776	11901	12006
10810	10899	10959	11001	11079	11240	11370	11477	11562	11628	11779	11915	12007
10811	10900	10960	11002	11080	11241	11372	11478	11563	11629	11795	11919	12012
10812	10902	10961	11003	11083	11242	11374	11479	11564	11631	11830	11920	12013
10813	10904	10962	11004	11093	11243	11379	11480	11567	11633	11831	11935	12014
10814	10905	10963	11006	11095	11244	11380	11481	11568	11634	11833	11936	12015
10815	10908	10964	11007	11103	11245	11391	11496	11572	11635	11834	11937	12018
10816	10909	10965	11009	11104	11246	11410	11498	11573	11650	11835	11939	12020
10817	10910	10968	11010	11109	11256	11411	11499	11574	11651	11836	11940	12021
10818	10911	10969	11011	11113	11259	11412	11500	11575	11654	11843	11945	12022
10819	10912	10970	11012	11114	11260	11413	11501	11576	11655	11851	11947	12023
10820	10913	10971	11013	11115	11261	11414	11505	11577	11670	11853	11950	12026
10822	10914	10972	11014	11117	11262	11420	11508	11578	11675	11854	11951	12032
10823	10915	10973	11025	11119	11263	11421	11512	11580	11681	11855	11952	12033
10829	10918	10974	11026	11133	11266	11429	11520	11582	11690	11856	11953	12034
10830	10923	10975	11027	11151	11272	11436	11522	11583	11691	11858	11954	12035
10842	10924	10976	11030	11152	11274	11448	11523	11584	11698	11859	11955	12042

Los Angeles County Public Works  
Sewer Maintenance Districts  
Tax Rate Area Report and Boundary Maps

12043	12178	12304	12354	12417	12515	12623	12783	12918	12979	13052	13146	13294
12045	12180	12307	12355	12419	12517	12624	12786	12919	12982	13055	13147	13295
12056	12182	12315	12356	12420	12523	12625	12787	12920	12983	13056	13149	13296
12057	12183	12316	12357	12421	12526	12627	12794	12921	12987	13057	13150	13297
12058	12184	12317	12358	12422	12527	12628	12805	12922	12988	13058	13151	13299
12059	12185	12318	12359	12423	12528	12629	12807	12928	12989	13059	13155	13300
12064	12187	12319	12368	12424	12529	12630	12809	12929	12990	13061	13164	13314
12066	12188	12320	12370	12425	12536	12631	12810	12931	12993	13071	13167	13315
12070	12189	12321	12371	12428	12537	12632	12813	12934	12999	13072	13173	13316
12071	12195	12322	12372	12429	12538	12634	12814	12935	13000	13073	13175	13318
12074	12196	12323	12373	12431	12539	12635	12815	12936	13002	13074	13177	13320
12076	12204	12325	12376	12432	12540	12643	12816	12937	13010	13075	13186	13322
12080	12205	12326	12377	12433	12543	12644	12817	12947	13013	13078	13187	13323
12081	12258	12327	12381	12434	12544	12645	12818	12949	13014	13081	13189	13324
12082	12259	12332	12386	12446	12546	12651	12828	12950	13017	13083	13201	13325
12084	12260	12333	12388	12454	12551	12655	12830	12951	13018	13084	13204	13326
12085	12265	12334	12392	12460	12552	12656	12831	12953	13019	13085	13208	13331
12087	12266	12335	12394	12462	12555	12657	12837	12954	13020	13086	13214	13332
12088	12267	12336	12395	12467	12557	12676	12838	12956	13021	13087	13215	13333
12089	12268	12337	12396	12468	12566	12686	12843	12957	13023	13090	13216	13336
12093	12269	12338	12399	12469	12567	12687	12849	12958	13025	13097	13217	13337
12097	12270	12339	12400	12470	12569	12688	12855	12959	13026	13099	13227	13340
12121	12275	12341	12401	12477	12594	12695	12857	12960	13027	13103	13271	13342
12125	12279	12342	12402	12479	12595	12707	12859	12961	13028	13106	13276	13354
12131	12280	12343	12403	12483	12596	12708	12861	12962	13029	13109	13277	13355
12133	12282	12344	12404	12486	12597	12709	12862	12963	13033	13110	13282	13356
12137	12284	12345	12405	12487	12602	12711	12865	12965	13035	13111	13283	13357
12142	12286	12346	12408	12496	12603	12715	12866	12967	13037	13112	13284	13358
12151	12290	12347	12410	12497	12605	12729	12884	12968	13038	13114	13285	13359
12152	12292	12348	12411	12498	12608	12756	12886	12970	13039	13115	13286	13360
12156	12294	12349	12412	12499	12610	12757	12887	12971	13040	13116	13287	13373
12159	12295	12350	12413	12501	12614	12769	12888	12972	13042	13117	13290	13386
12160	12296	12351	12414	12502	12617	12770	12908	12974	13043	13119	13291	13387
12169	12302	12352	12415	12503	12618	12771	12916	12977	13044	13129	13292	13388
12177	12303	12353	12416	12514	12622	12782	12917	12978	13050	13145	13293	13390

Los Angeles County Public Works  
Sewer Maintenance Districts  
Tax Rate Area Report and Boundary Maps

13391	13450	13570	13663	13730	13818	13881	14048	14174	14249	14332	14427	14535
13392	13455	13571	13664	13731	13822	13884	14049	14175	14250	14339	14429	14547
13393	13456	13572	13665	13732	13825	13885	14050	14187	14252	14343	14434	14556
13394	13457	13573	13666	13735	13826	13886	14054	14188	14253	14344	14437	14561
13395	13474	13574	13667	13736	13827	13889	14060	14190	14254	14345	14438	14565
13396	13475	13575	13668	13737	13829	13890	14061	14191	14255	14348	14445	14569
13397	13476	13576	13669	13738	13832	13891	14073	14192	14256	14349	14449	14571
13398	13478	13601	13670	13739	13833	13892	14076	14193	14257	14350	14450	14574
13402	13479	13603	13673	13740	13834	13896	14103	14194	14258	14351	14452	14579
13403	13480	13604	13674	13741	13837	13897	14121	14195	14259	14352	14453	14581
13404	13485	13611	13675	13747	13838	13904	14122	14196	14260	14353	14457	14582
13405	13491	13612	13676	13751	13840	13934	14124	14197	14263	14354	14458	14584
13406	13499	13614	13677	13757	13843	13940	14126	14198	14264	14356	14461	14589
13407	13500	13617	13679	13758	13846	13945	14127	14200	14265	14357	14476	14591
13408	13503	13627	13680	13760	13847	13948	14128	14201	14266	14358	14479	14592
13409	13507	13629	13681	13768	13848	13950	14129	14202	14267	14359	14485	14593
13410	13513	13632	13684	13769	13849	13951	14131	14203	14268	14360	14490	14594
13411	13516	13642	13689	13770	13850	13952	14132	14204	14271	14362	14491	14596
13412	13530	13643	13690	13772	13851	13954	14133	14206	14280	14363	14492	14597
13413	13531	13644	13708	13773	13852	13955	14141	14207	14281	14364	14493	14598
13414	13533	13645	13709	13775	13853	13956	14147	14208	14286	14365	14494	14599
13415	13534	13646	13710	13777	13855	13967	14148	14209	14289	14366	14498	14600
13419	13536	13647	13711	13779	13856	13968	14150	14211	14290	14370	14499	14601
13421	13537	13648	13714	13780	13866	13969	14152	14212	14291	14384	14500	14602
13422	13547	13649	13715	13781	13867	13971	14157	14213	14309	14387	14501	14603
13429	13552	13650	13719	13785	13868	13972	14159	14214	14315	14388	14502	14604
13434	13556	13651	13720	13786	13869	13973	14160	14216	14316	14393	14503	14612
13435	13557	13652	13722	13787	13870	13974	14161	14220	14317	14403	14505	14618
13436	13558	13653	13723	13798	13871	13978	14162	14229	14319	14404	14511	14620
13437	13561	13654	13724	13799	13872	13979	14163	14230	14321	14408	14513	14621
13442	13562	13656	13725	13800	13873	13985	14164	14231	14322	14416	14514	14622
13443	13565	13659	13726	13802	13876	13989	14168	14245	14323	14418	14515	14626
13444	13566	13660	13727	13810	13878	14043	14169	14246	14324	14421	14516	14627
13448	13567	13661	13728	13811	13879	14044	14170	14247	14328	14422	14519	14628
13449	13569	13662	13729	13816	13880	14045	14173	14248	14331	14423	14520	14629

Los Angeles County Public Works  
Sewer Maintenance Districts  
Tax Rate Area Report and Boundary Maps

14635	14747	14786	14843	14940	14993	15077	15150	15204	15290	15358	15450	15499
14636	14748	14787	14844	14949	14994	15084	15151	15207	15291	15359	15451	15501
14637	14749	14788	14846	14951	14995	15085	15152	15209	15292	15360	15452	15503
14638	14751	14790	14848	14952	14996	15086	15153	15212	15293	15361	15453	15510
14639	14752	14791	14849	14953	14997	15087	15154	15226	15294	15363	15454	15512
14647	14753	14795	14853	14955	14998	15088	15155	15235	15295	15364	15455	15513
14661	14754	14801	14855	14960	14999	15089	15156	15241	15296	15365	15456	15519
14670	14755	14802	14856	14963	15000	15090	15157	15242	15297	15367	15457	15520
14671	14756	14803	14857	14964	15001	15091	15158	15244	15300	15368	15458	15521
14674	14757	14804	14858	14965	15002	15097	15159	15248	15301	15369	15459	15523
14679	14758	14805	14859	14967	15010	15098	15160	15250	15302	15370	15460	15528
14681	14759	14806	14860	14968	15015	15099	15161	15251	15303	15374	15461	15531
14687	14760	14807	14861	14969	15019	15100	15162	15252	15304	15377	15462	15532
14690	14761	14808	14864	14970	15026	15104	15163	15253	15306	15380	15463	15533
14691	14762	14811	14870	14971	15030	15105	15166	15254	15307	15382	15464	15546
14692	14763	14814	14871	14972	15037	15110	15167	15255	15311	15383	15465	15547
14704	14764	14815	14872	14973	15042	15111	15168	15256	15312	15386	15466	15552
14706	14765	14816	14873	14974	15043	15112	15169	15257	15313	15387	15467	15555
14712	14766	14817	14874	14975	15044	15113	15170	15258	15314	15388	15468	15558
14713	14767	14818	14878	14976	15045	15114	15171	15259	15315	15390	15469	15561
14714	14768	14823	14879	14977	15046	15115	15172	15260	15316	15391	15470	15568
14715	14769	14824	14880	14978	15047	15116	15173	15261	15318	15394	15471	15569
14716	14770	14825	14893	14979	15048	15124	15174	15262	15319	15395	15474	15570
14717	14771	14826	14898	14980	15049	15138	15175	15263	15320	15408	15477	15573
14721	14773	14827	14899	14981	15050	15139	15179	15264	15321	15409	15483	15594
14722	14774	14830	14903	14982	15051	15140	15181	15265	15331	15419	15484	15596
14723	14775	14831	14905	14983	15052	15141	15182	15266	15336	15420	15485	15597
14724	14776	14832	14909	14984	15058	15142	15183	15277	15340	15422	15487	15598
14725	14777	14834	14910	14985	15065	15143	15195	15278	15342	15423	15488	15599
14726	14778	14837	14921	14986	15066	15144	15196	15279	15343	15433	15489	15601
14727	14780	14838	14931	14988	15067	15145	15199	15280	15344	15434	15490	15602
14729	14781	14839	14932	14989	15069	15146	15200	15282	15353	15439	15491	15603
14730	14782	14840	14933	14990	15072	15147	15201	15284	15354	15445	15494	15606
14740	14783	14841	14935	14991	15073	15148	15202	15286	15356	15446	15497	15608
14746	14785	14842	14939	14992	15074	15149	15203	15287	15357	15449	15498	15609

Los Angeles County Public Works  
Sewer Maintenance Districts  
Tax Rate Area Report and Boundary Maps

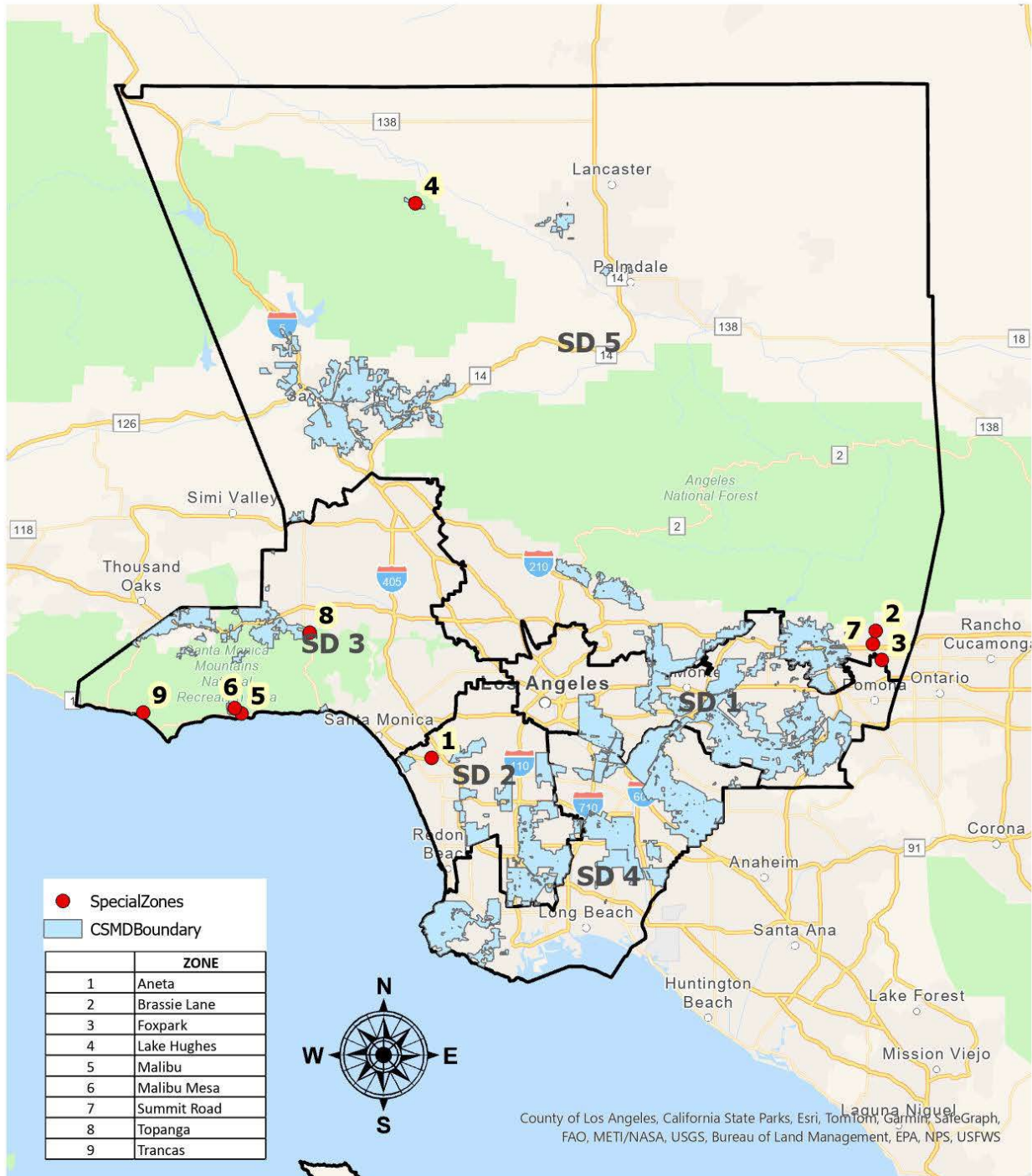
15610	15668	15706	15750	15817	15962	16098	16162	16235	16333	16438	16490	16559
15611	15669	15707	15751	15818	15971	16101	16163	16238	16338	16439	16491	16563
15615	15670	15708	15752	15831	15972	16102	16166	16239	16342	16440	16492	16564
15617	15671	15709	15754	15832	15974	16103	16168	16240	16343	16442	16493	16565
15619	15672	15710	15755	15833	15990	16104	16170	16241	16344	16443	16494	16571
15620	15673	15711	15756	15834	15993	16105	16176	16242	16345	16444	16495	16575
15621	15675	15713	15757	15835	15998	16106	16177	16243	16346	16445	16496	16577
15622	15676	15714	15758	15836	15999	16107	16182	16244	16347	16459	16497	16579
15623	15677	15715	15759	15837	16000	16108	16185	16245	16348	16461	16498	16580
15624	15678	15716	15760	15838	16009	16109	16191	16246	16349	16462	16499	16581
15625	15679	15717	15761	15842	16038	16111	16193	16247	16350	16463	16500	16583
15626	15680	15718	15765	15848	16047	16112	16197	16249	16351	16464	16504	16586
15627	15681	15719	15766	15858	16060	16113	16207	16250	16353	16465	16505	16590
15628	15683	15720	15767	15863	16069	16114	16209	16251	16354	16466	16506	16592
15629	15684	15721	15768	15868	16070	16115	16212	16252	16356	16468	16508	16594
15630	15685	15723	15769	15873	16071	16116	16213	16253	16360	16469	16509	16595
15631	15686	15724	15770	15878	16072	16117	16214	16255	16369	16470	16511	16597
15632	15687	15725	15771	15907	16073	16125	16215	16259	16372	16471	16512	16598
15633	15688	15727	15772	15908	16074	16126	16216	16262	16377	16472	16513	16599
15634	15689	15728	15776	15909	16075	16128	16217	16263	16387	16473	16514	16603
15635	15690	15731	15778	15913	16076	16131	16218	16268	16394	16474	16515	16604
15636	15691	15732	15779	15915	16077	16133	16220	16284	16400	16475	16516	16605
15637	15692	15734	15780	15918	16078	16134	16221	16286	16401	16476	16519	16607
15644	15693	15735	15781	15927	16079	16136	16222	16291	16402	16477	16528	16608
15647	15694	15736	15782	15932	16080	16137	16223	16296	16403	16478	16531	16609
15648	15695	15737	15783	15933	16081	16139	16224	16306	16404	16479	16532	16611
15649	15696	15741	15794	15935	16082	16140	16226	16315	16407	16480	16534	16612
15656	15697	15742	15796	15937	16083	16142	16227	16319	16408	16481	16535	16613
15657	15698	15743	15798	15938	16084	16144	16228	16320	16409	16482	16539	16617
15662	15699	15744	15799	15941	16085	16148	16229	16321	16411	16483	16540	16618
15663	15700	15745	15803	15944	16086	16149	16230	16322	16413	16485	16541	16619
15664	15701	15746	15804	15953	16088	16150	16231	16325	16430	16486	16543	16620
15665	15702	15747	15814	15954	16091	16154	16232	16326	16432	16487	16547	16621
15666	15703	15748	15815	15957	16095	16158	16233	16327	16436	16488	16549	16622
15667	15704	15749	15816	15959	16097	16160	16234	16330	16437	16489	16550	16623

Los Angeles County Public Works  
Sewer Maintenance Districts  
Tax Rate Area Report and Boundary Maps

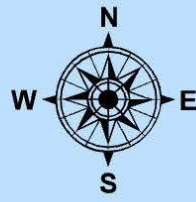
16624	16718	16816	16888	16946	16985	17041	17198	17249	17301	17371	17460	08642
16625	16720	16821	16889	16947	16986	17042	17200	17251	17302	17372	17461	08651
16626	16723	16824	16891	16948	16987	17074	17201	17253	17303	17374	17462	10858
16627	16728	16825	16892	16949	16989	17113	17202	17254	17304	17380	17464	11046
16628	16736	16826	16893	16950	16990	17117	17203	17255	17305	17382	17465	11048
16630	16737	16827	16894	16951	16993	17118	17204	17256	17307	17386	17466	11050
16631	16738	16828	16895	16952	16994	17137	17205	17257	17308	17388	17467	FOXPARK DRIVE
16632	16739	16829	16896	16953	16995	17138	17206	17258	17309	17391	17468	02798
16633	16740	16830	16897	16954	16996	17139	17207	17259	17310	17402	17469	16714
16634	16741	16831	16898	16955	16997	17141	17208	17260	17313	17411	17470	SUMMIT ROAD
16635	16742	16848	16899	16956	16998	17142	17209	17261	17314	17412	17471	02929
16636	16743	16850	16900	16958	16999	17143	17210	17263	17316	17414	17473	05123
16638	16744	16854	16901	16959	17000	17146	17211	17264	17317	17415	17475	06119
16639	16745	16858	16903	16960	17001	17147	17212	17265	17318	17416	17476	12614
16640	16746	16860	16904	16961	17002	17155	17213	17266	17319	17418	17477	TRANCAS
16641	16747	16861	16905	16962	17006	17158	17214	17267	17321	17420	10856	12627
16642	16748	16865	16906	16963	17010	17160	17215	17268	17324	17421	11003	LAKE HUGHES
16643	16749	16868	16907	16964	17011	17161	17216	17269	17330	17422	11004	01858
16645	16750	16869	16909	16965	17012	17167	17217	17270	17332	17424	16919	01859
16648	16751	16871	16911	16966	17013	17170	17218	17271	17333	17425	TOPANGA	01861
16650	16752	16872	16912	16967	17014	17173	17220	17272	17340	17426	01438	BRASSIE LANE
16651	16753	16873	16913	16968	17017	17174	17222	17273	17343	17427	01516	01436
16652	16755	16874	16915	16969	17021	17175	17223	17274	17344	17430	10419	01437
16658	16756	16875	16919	16970	17023	17176	17224	17275	17346	17431	MALIBU	MARINA
16659	16757	16876	16921	16971	17025	17177	17225	17279	17348	17432	10861	00369
16672	16758	16877	16922	16974	17026	17181	17234	17282	17349	17438	10862	01460
16674	16762	16878	16923	16975	17027	17182	17235	17283	17350	17439	ANETA	01608
16676	16763	16879	16925	16976	17028	17183	17236	17286	17351	17444	01163	
16677	16764	16880	16926	16977	17030	17184	17237	17287	17352	17448	01473	
16678	16765	16881	16928	16978	17031	17185	17238	17288	17353	17449	01482	
16690	16782	16882	16930	16979	17032	17190	17239	17291	17354	17453	11151	
16707	16802	16883	16942	16980	17033	17191	17242	17292	17356	17455	MALIBU MESA	
16713	16806	16884	16943	16982	17035	17192	17243	17298	17357	17457	08625	
16714	16812	16885	16944	16983	17036	17193	17244	17299	17358	17458		
16716	16813	16886	16945	16984	17037	17194	17247	17300	17363	17459		

Los Angeles County Public Works  
 Sewer Maintenance Districts  
 Tax Rate Area Report and Boundary Maps

**Los Angeles County Public Works**  
**Consolidated Sewer Maintenance District and Special Service Zones**



ZONE	
1	Aneta
2	Brassie Lane
3	Foxpark
4	Lake Hughes
5	Malibu
6	Malibu Mesa
7	Summit Road
8	Topanga
9	Trancas



0 44,055 88,110 176,220 Feet

Map generated on April 11, 2024

Los Angeles County Public Works  
 Sewer Maintenance Districts  
 Tax Rate Area Report and Boundary Maps



**Los Angeles County Public Works**  
**Aneta Zone**  
**Supervisory District 2**

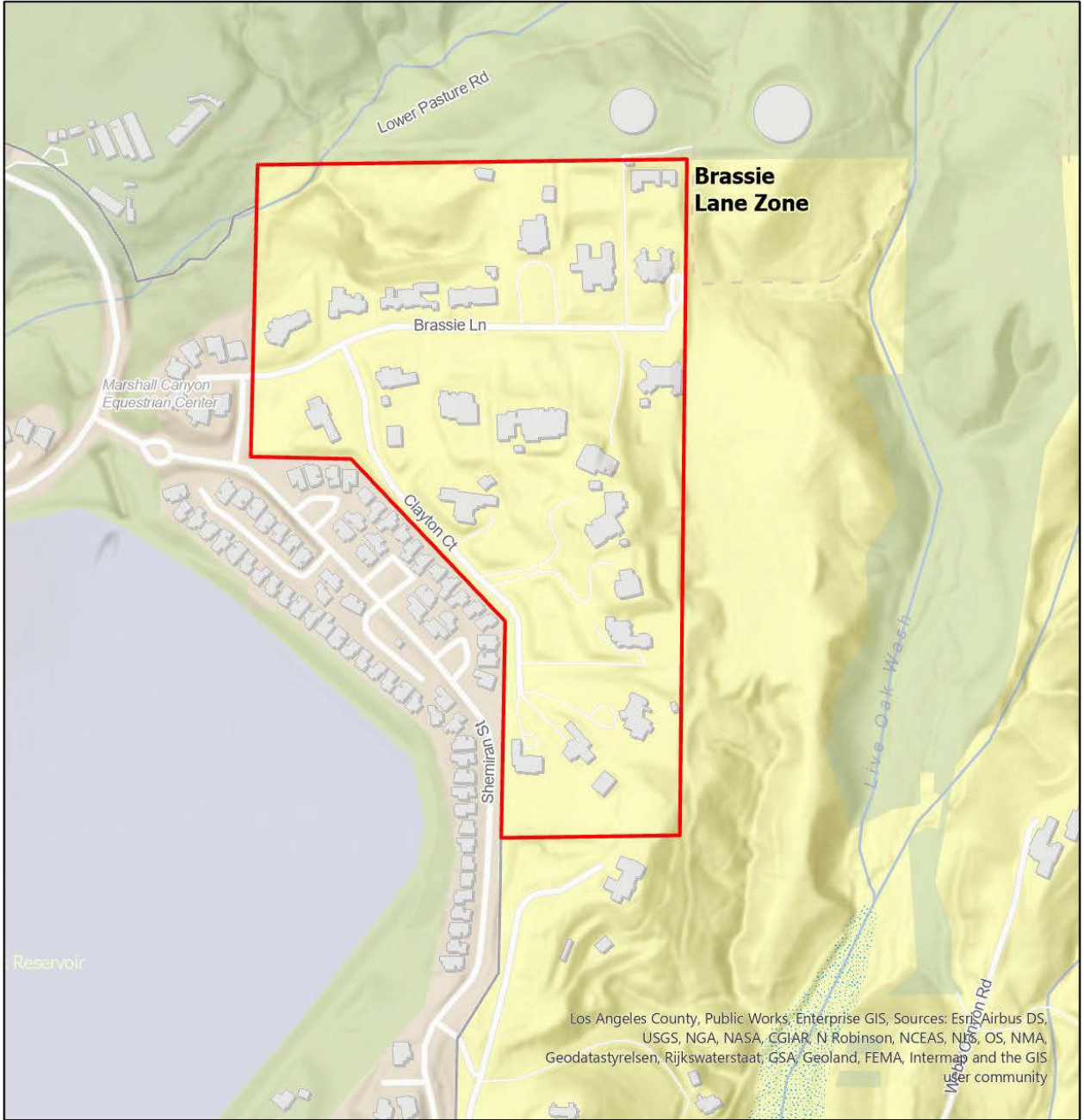


Los Angeles County, Public Works, Enterprise GIS, Sources: Esri, Airbus DS, USGS, NGA, NASA, CGIAR, N Robinson, NCEAS, NLS, OS, NMA, Geodastystyrelsen, Rijkswaterstaat, GSA, Geoland, FEMA, Intermap and the GIS user community

	<b>ANETA ZONE</b>	
	<b># of Assessor Parcel</b>	<b>Sewage Units</b>
	<b>103</b>	<b>328</b>

Los Angeles County Public Works  
 Sewer Maintenance Districts  
 Tax Rate Area Report and Boundary Maps

**Los Angeles County Public Works**  
**Brassie Lane Zone**  
**Supervisorial District 5**

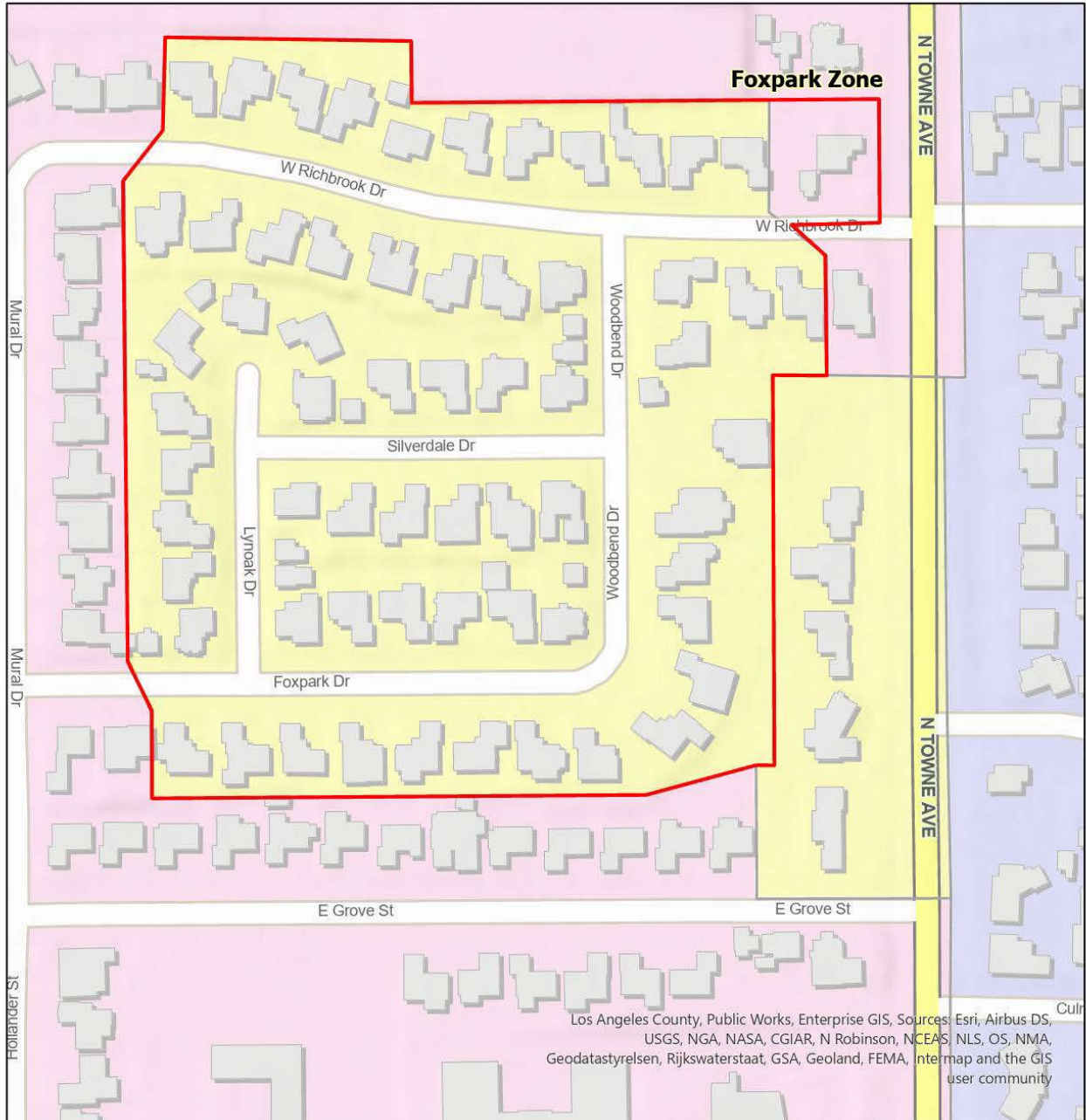


	<b>BRASSIE LANE ZONE</b>	
	<b># of Assessor Parcel</b>	<b>Sewage Units</b>
	<b>20</b>	<b>20</b>

Los Angeles County Public Works  
 Sewer Maintenance Districts  
 Tax Rate Area Report and Boundary Maps



**Los Angeles County Public Works  
 Foxpark Zone  
 Supervisorial District 1**

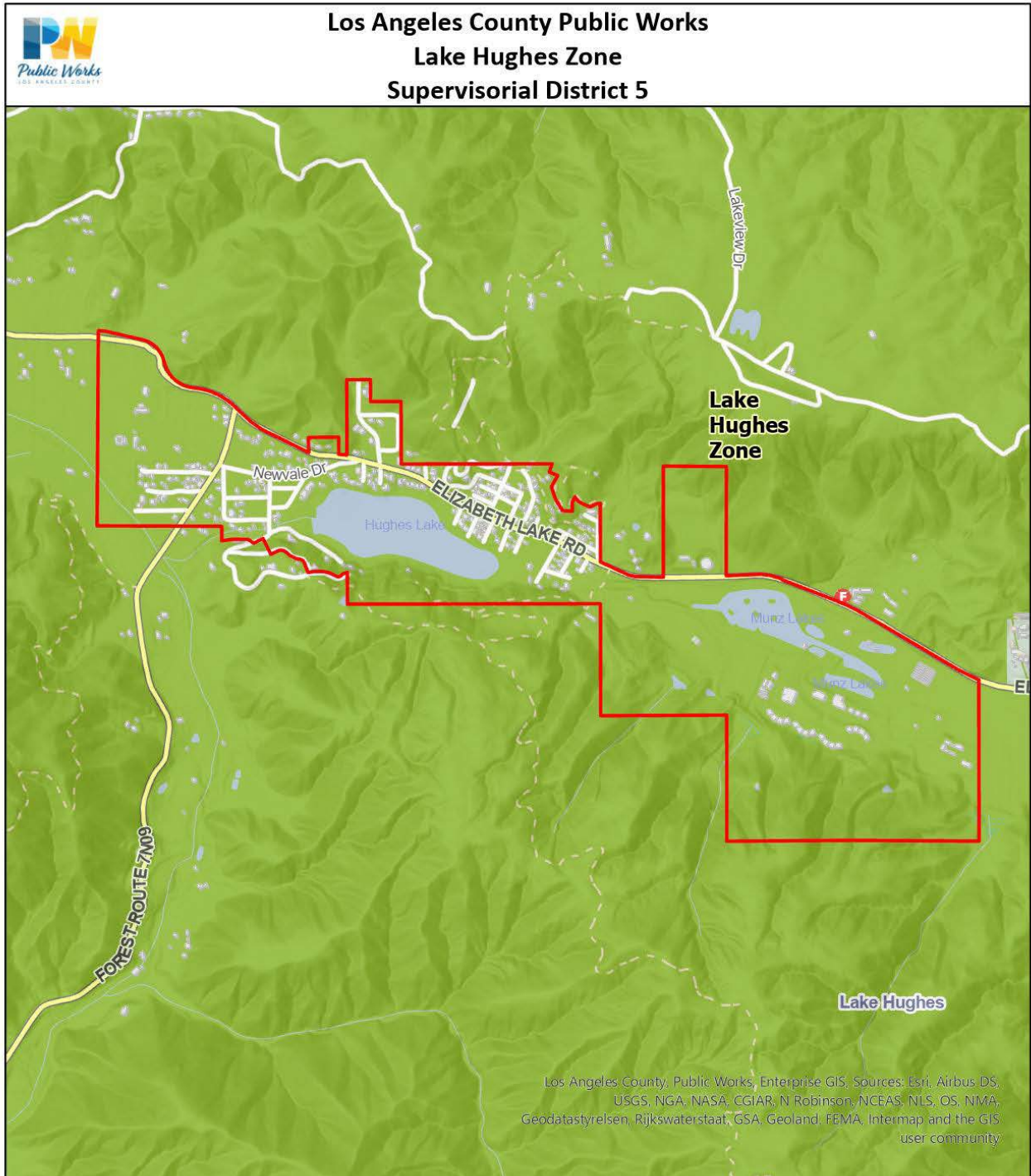


Los Angeles County, Public Works, Enterprise GIS. Sources: Esri, Airbus DS, USGS, NGA, NASA, CGIAR, N Robinson, NCEAS, NLS, OS, NMA, Geodastyrrelsen, Rijkswaterstaat, GSA, Geoland, FEMA, Intermap and the GIS user community



FOXPARK ZONE	
# of Assessor Parcel	Sewage Units
61	61

Los Angeles County Public Works  
 Sewer Maintenance Districts  
 Tax Rate Area Report and Boundary Maps



	<b>LAKE HUGHES ZONE</b>	
	<b># of Assessor Parcel</b>	<b>Sewage Units</b>
	<b>211</b>	<b>282</b>

Los Angeles County Public Works  
 Sewer Maintenance Districts  
 Tax Rate Area Report and Boundary Maps

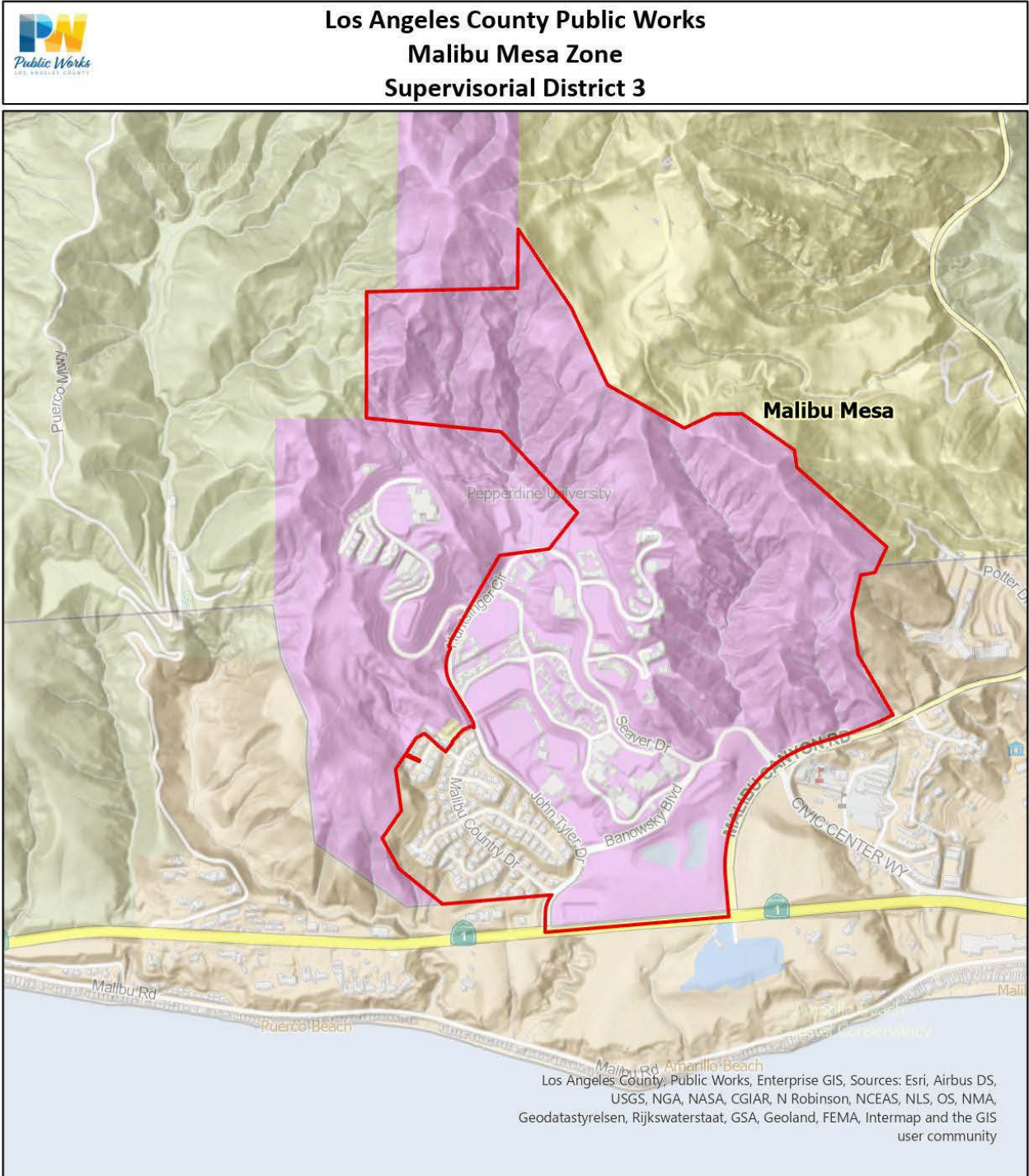
**Los Angeles County Public Works**  
**Malibu Zone**  
**Supervisorial District 3**



Los Angeles County, Public Works, Enterprise GIS, Sources: Esri, Airbus DS, USGS, NGA, NASA, CGIAR, N Robinson, NCEAS, NLS, OS, NMA, Geodatastyrelsen, Rijkswaterstaat, GSA, Geoland, FEMA, Intermap and the GIS user community

	<b>MALIBU ZONE</b>	
	<b># of Assessor Parcel</b>	<b>Sewage Units</b>
	<b>191</b>	<b>191</b>

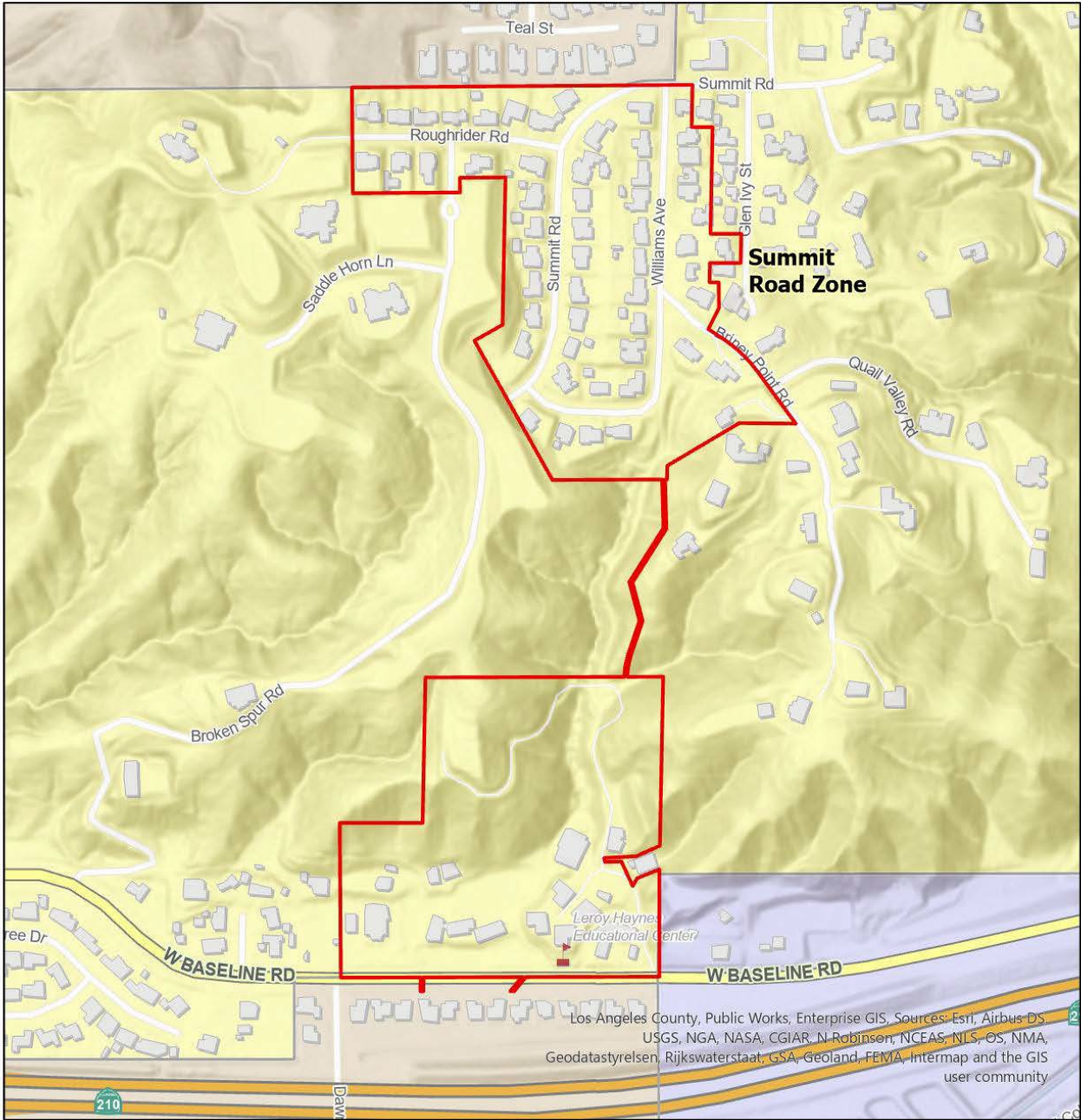
Los Angeles County Public Works  
 Sewer Maintenance Districts  
 Tax Rate Area Report and Boundary Maps



	<b>MALIBU MESA ZONE</b>	
	<b># of Assessor Parcel</b>	<b>Sewage Units</b>
	<b>187</b>	<b>989</b>

Los Angeles County Public Works  
 Sewer Maintenance Districts  
 Tax Rate Area Report and Boundary Maps

**Los Angeles County Public Works**  
**Summit Road Zone**  
**Supervisorial District 5**

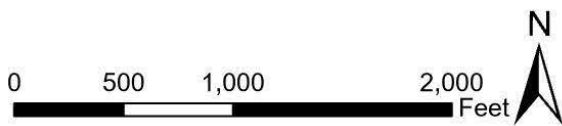
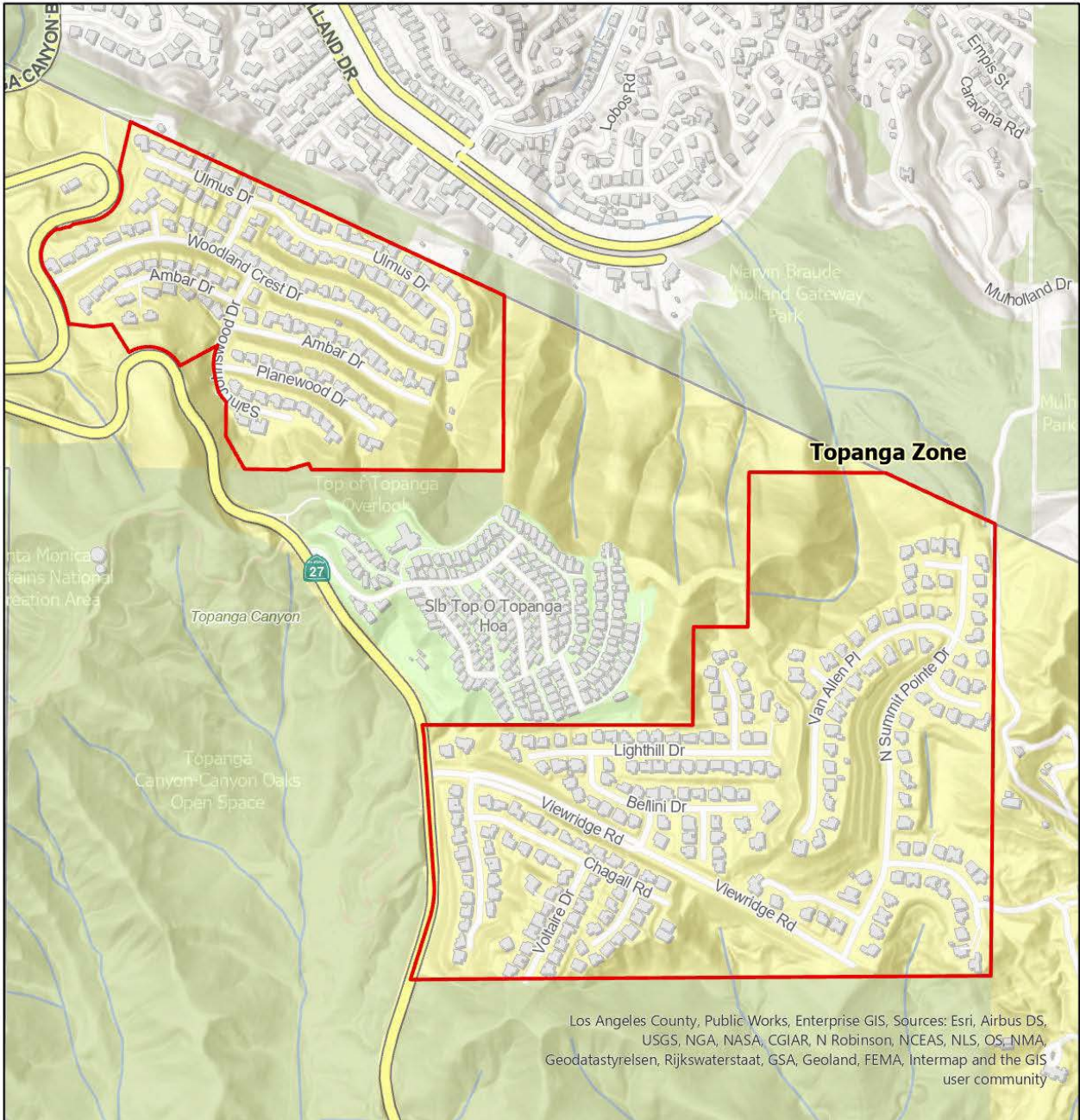


Los Angeles County, Public Works, Enterprise GIS. Sources: Esri, Airbus DS, USGS, NGA, NASA, CGIAR, N Robinson, NCEAS, NLS, OS, NMA, Geodatastyrelsen, Rijkswaterstaat, GSA, Geoland, FEMA, Intermap and the GIS user community

<p>0      375      750      1,500        Feet</p>		<p><b>SUMMIT ROAD ZONE</b></p>	
		<p><b># of Assessor Parcel</b></p>	<p><b>Sewage Units</b></p>
		<p><b>59</b></p>	<p><b>63</b></p>

Los Angeles County Public Works  
 Sewer Maintenance Districts  
 Tax Rate Area Report and Boundary Maps

**Los Angeles County Public Works**  
**Topanga Zone**  
**Supervisorial District 3**



TOPANGA ZONE	
# of Assessor Parcel	Sewage Units
355	355

Los Angeles County Public Works  
 Sewer Maintenance Districts  
 Tax Rate Area Report and Boundary Maps




**Los Angeles County Public Works**  
**Trancas Zone**  
**Supervisorial District 3**



TRANCAS ZONE	
# of Assessor Parcel	Sewage Units
271	271

Los Angeles County Public Works  
Sewer Maintenance Districts  
Tax Rate Area Report and Boundary Maps

 **Los Angeles County Public Works  
Marina Sewer Maintenance District  
Supervisorial District 2**

