



MARK PESTRELLA, Director

**COUNTY OF LOS ANGELES
DEPARTMENT OF PUBLIC WORKS**

"To Enrich Lives Through Effective and Caring Service"

900 SOUTH FREMONT AVENUE
ALHAMBRA, CALIFORNIA 91803-1331
Telephone (626) 458-5100
<http://dpw.lacounty.gov>

ADDRESS ALL CORRESPONDENCE TO:
P.O. BOX 1460
ALHAMBRA, CALIFORNIA 91802-1460

ADOPTED

IN REPLY PLEASE
REFER TO FILE

December 17, 2024

BOARD OF SUPERVISORS
COUNTY OF LOS ANGELES

The Honorable Board of Supervisors
County of Los Angeles
383 Kenneth Hahn Hall of Administration
500 West Temple Street
Los Angeles, California 90012

49 December 17, 2024

EDWARD YEN
EXECUTIVE OFFICER

Dear Supervisors:

**MUNICIPAL SERVICES CORE SERVICE AREA
APPROVAL OF THE FINAL MAP FOR TRACT 45465-04 AND
ACCEPTANCE OF GRANTS AND DEDICATIONS IN CONNECTION
THEREWITH IN UNINCORPORATED SANTA MONICA MOUNTAINS
(SUPERVISORIAL DISTRICT 3)
(3 VOTES)**

SUBJECT

Public Works is seeking Board approval of the final map for Tract 45465-04 in the County unincorporated community of Santa Monica Mountains and acceptance of grants and dedications as indicated on the final map.

IT IS RECOMMENDED THAT THE BOARD:

1. Find that the approval of the final map for Tract 45465-04 is categorically exempt from the California Environmental Quality Act for the reasons stated in this Board letter.
2. Make findings as follows:
 - a. That the proposed subdivision complies with the applicable requirements and conditions imposed pursuant to the State Subdivision Map Act (Government Code, Section 66410, et seq.) and the County of Los Angeles Subdivision Ordinance (Los Angeles County Code, Title 21) and is in substantial conformance with the Second Amendment to Vesting Tentative Tract Map 45465, previously approved by the Regional Planning Commission on October 5, 1988.
 - b. That division and development of the property, in the manner set forth on the approved tentative map for this subdivision, will not unreasonably interfere with the free and complete exercise

of any rights of way or easements owned by any public entity and/or public utility in accordance with Government Code, Section 66436, subsections (a)(3)(A)(i), of the State Subdivision Map Act.

3. Approve the final map for Tract 45465-04.
4. Accept grants and dedications as indicated on the final map for Tract 45465-04.

PURPOSE/JUSTIFICATION OF RECOMMENDED ACTION

The purpose of the recommended actions is to approve the final map for Tract 45465-04 (enclosed). The proposed final map consists of 48.83 acres and will create 12 single-family residential lots. The 12 single-family residential lots will benefit the public by allowing for the construction of additional housing to help address the County's housing demands.

The Regional Planning Commission approved a Second Amendment to the Vesting Tentative Tract Map for this subdivision on October 5, 1988. The subdivider has complied with all requirements imposed as a condition of the approval of the tentative map, and the final map is in substantial conformance with the approved tentative map.

Pursuant to the State Subdivision Map Act, a local agency must approve a final map if the subdivider has complied with all applicable requirements of State and local law and the legislative body finds that the final map is in substantial conformance with the approved tentative map.

The grants and dedications, as indicated on the final map, are necessary for the construction and maintenance of public infrastructure required by the County for this development.

Implementation of Strategic Plan Goals

These recommendations support the County Strategic Plan: North Star 1, Make Investments that Transform Lives, Focus Area Goal C, Housing and Homelessness, Strategy i, Affordable Housing, by allowing the County to record the final map to develop housing opportunities within the County and provide additional property tax revenue for Los Angeles County.

FISCAL IMPACT/FINANCING

There will be no adverse impact to the County General Fund. The 12 single-family residential lots created by the recordation of this final map will generate additional property tax revenue that is shared by all taxing entities.

FACTS AND PROVISIONS/LEGAL REQUIREMENTS

The approval of the final map is subject to provisions of the State Subdivision Map Act [Government Code, Sections 66410, et seq.; 66458, subsection (a); 66473; 66474.1; 66436, subsections (a)(3)(A)(i); and 66427.1, subsection (A)], which states that a legislative body shall not deny approval of a final map if it has previously approved a tentative map for the proposed subdivision and finds that the final map is in substantial conformance with the previously approved tentative map.

The final map has been reviewed by Public Works for mathematical accuracy, survey analysis, title information, and for compliance with local ordinances and the State Subdivision Map Act. Public Works' review indicates that the subdivision is substantially the same as it appears on the approved

tentative map, that all State and local provisions and legal requirements have been met on this final map, and that the final map is technically correct.

All agreements and improvement securities, which were required as a condition of the approval of the final map, have been accepted on behalf of the County by the appropriate official.

ENVIRONMENTAL DOCUMENTATION

On October 5, 1988, the Regional Planning Commission approved and certified the Final Environmental Impact Report for Vesting Tentative Tract Map 45465, which was completed in compliance with the California Environmental Quality Act (CEQA) guidelines and found no substantial evidence that the project will have a significant effect on the environment.

The recommended actions are not subject to CEQA because the approval of a final subdivision map is ministerial pursuant to Section 15268, subsections (b)(3), of the CEQA guidelines and Section 21080, subsections (b)(1), of the California Public Resources Code.

IMPACT ON CURRENT SERVICES (OR PROJECTS)

There will be no negative impact on current County services or projects as a result of approving the final map for Tract 45465-04.

CONCLUSION

Please return one adopted copy of this Board letter to Public Works, Land Development Division.

Respectfully submitted,



MARK PESTRELLA, PE
Director

MP:CB:tb

Enclosures

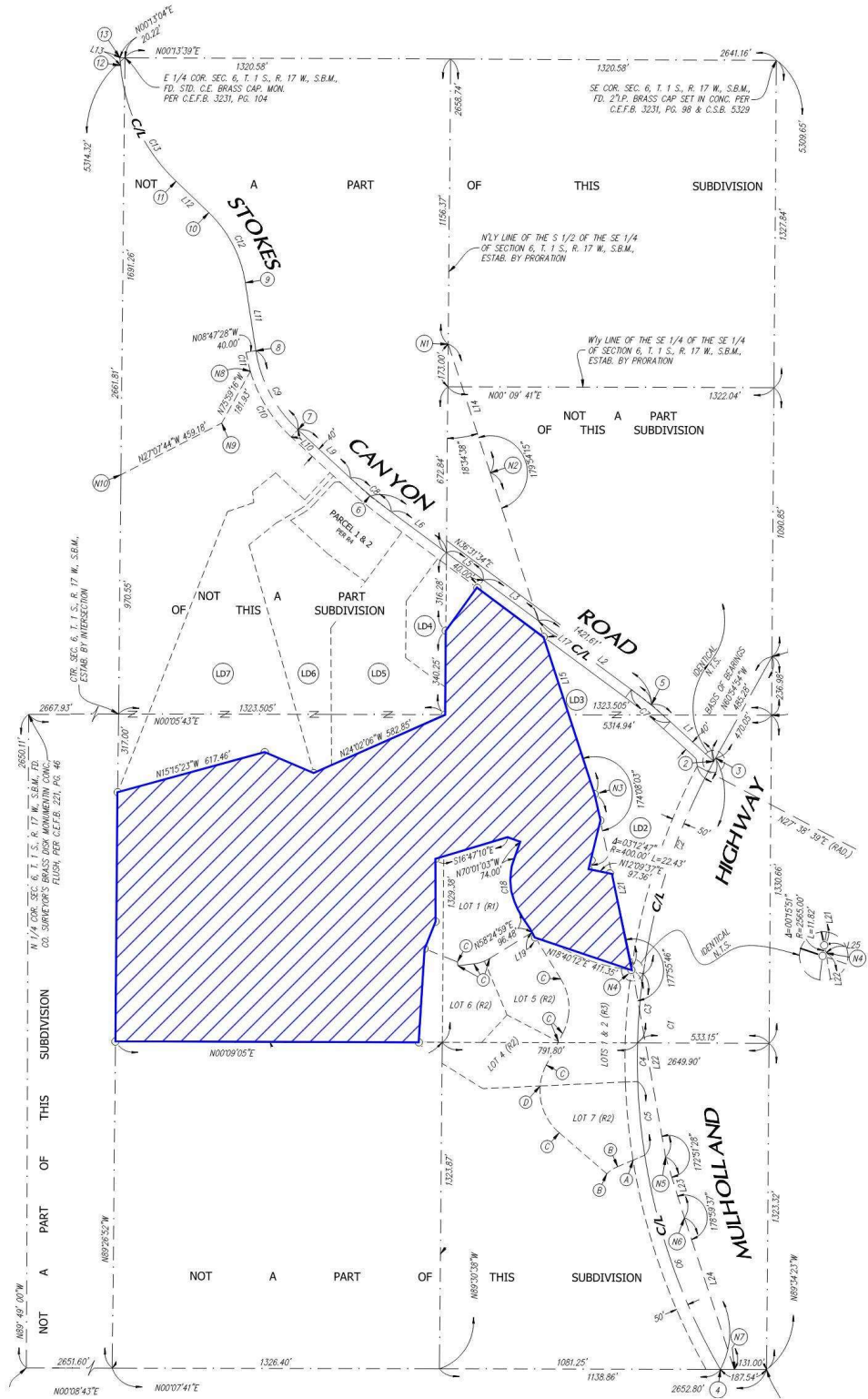
c: Chief Executive Office (Chia-Ann Yen)
County Counsel
Executive Office
Department of Regional Planning

NOTES

TRACT NO. 45465-04

IN THE UNINCORPORATED TERRITORY OF THE
COUNTY OF LOS ANGELES, STATE OF CALIFORNIA

BOUNDARY ESTABLISHMENT



LEGEND: 
 INDICATES THE BOUNDARY OF THE
 LAND BEING SUBDIVIDED BY THIS MAP