



MARK PESTRELLA, Director

**COUNTY OF LOS ANGELES
DEPARTMENT OF PUBLIC WORKS**

"To Enrich Lives Through Effective and Caring Service"

900 SOUTH FREMONT AVENUE
ALHAMBRA, CALIFORNIA 91803-1331
Telephone (626) 458-5100
<http://dpw.lacounty.gov>

ADDRESS ALL CORRESPONDENCE TO:
P.O. BOX 1460
ALHAMBRA, CALIFORNIA 91802-1460

IN REPLY PLEASE
REFER TO FILE

September 10, 2024

ADOPTED

BOARD OF SUPERVISORS
COUNTY OF LOS ANGELES

The Honorable Board of Supervisors
County of Los Angeles
383 Kenneth Hahn Hall of Administration
500 West Temple Street
Los Angeles, California 90012

75 September 10, 2024

Edward Yen
EDWARD YEN
EXECUTIVE OFFICER

Dear Supervisors:

**TRANSPORTATION CORE SERVICE AREA
TRAFFIC REGULATIONS IN THE UNINCORPORATED COMMUNITIES OF ALTADENA, AZUSA,
COVINA (CHARTER OAK), DUARTE,
LA CRESCENTA-MONTROSE, LAKE LOS ANGELES,
STEVENSON RANCH, AND SUN VILLAGE
(SUPERVISORIAL DISTRICT 5)
(3 VOTES)**

SUBJECT

Public Works is seeking Board approval to implement traffic regulations to support traffic safety, enhance traffic flow, facilitate street sweeping services, facilitate passenger loading at a school, and encourage parking turnover in the unincorporated communities of Altadena, Azusa, Covina (Charter Oak), Duarte, La Crescenta-Montrose, Lake Los Angeles, Stevenson Ranch, and Sun Village.

IT IS RECOMMENDED THAT THE BOARD:

1. Find that adopting and/or rescinding traffic regulation orders and posting or removing the corresponding regulatory and advisory signage are categorically exempt from the provisions of the California Environmental Quality Act.
2. Adopt a traffic regulation order prohibiting parking for a period longer than 1 hour from 7 a.m. to 12 a.m. on the south side of Figueroa Drive between a point 60 feet and a point 150 feet west of Lincoln Avenue in the unincorporated community of Altadena.

3. Adopt a traffic regulation order establishing a disabled person's parking zone on the south side of Figueroa Drive between a point 40 feet and a point 60 feet west of Lincoln Avenue in the unincorporated community of Altadena.
4. Adopt a traffic regulation order prohibiting stopping at any time on the north side of Mariposa Street between a point 93 feet east of Madison Avenue and El Molino Avenue in the unincorporated community of Altadena.
5. Adopt a traffic regulation order prohibiting stopping at any time on the south side of Rubio Canyon Road between Maiden Lane and a point 225 feet east of Maiden Lane in the unincorporated community of Altadena.
6. Adopt a traffic regulation order prohibiting parking from 10 p.m. to 6 a.m. on the west side of Marengo Avenue between Calaveras Street and Sacramento Street in the unincorporated community of Altadena.
7. Adopt a traffic regulation order prohibiting parking from 10 p.m. to 6 a.m. on the east side of Marengo Avenue between Alameda Street and Sacramento Street in the unincorporated community of Altadena.
8. Adopt a traffic regulation order prohibiting parking of vehicles over 6 feet in height on the west side of Marengo Avenue between a point 35 feet and a point 85 feet south of Sacramento Street in the unincorporated community of Altadena.
9. Adopt a traffic regulation order prohibiting parking from 2 a.m. to 4 a.m. on the north side of Arrow Highway between a point 875 feet east of Citrus Avenue and a point 295 feet west of Barranca Avenue in the unincorporated community of Azusa.
10. Adopt a traffic regulation order prohibiting parking from 2 a.m. to 4 a.m. on the south side of Arrow Highway between a point 880 feet east of Citrus Avenue and a point 115 feet west of Arrow Grand Circle in the unincorporated community of Azusa.
11. Adopt a traffic regulation order prohibiting parking for a period longer than 2 hours from 7 a.m. to 5 p.m. on the south side of Arrow Highway between a point 164 feet and a point 205 feet west of Valley Center Avenue in the unincorporated community of Covina (Charter Oak).
12. Adopt a traffic regulation order prohibiting parking from 2 a.m. to 4 a.m. on the north side of Arrow Highway between a point 630 feet east of Glendora Avenue and Valley Center Avenue in the unincorporated community of Covina (Charter Oak).
13. Adopt a traffic regulation order prohibiting parking from 2 a.m. to 4 a.m. on the south side of Arrow Highway between a point 975 feet east of Grand Avenue and Valley Center Avenue in the unincorporated community of Covina (Charter Oak).
14. Rescind a traffic regulation order prohibiting parking for street sweeping purposes from 9 a.m. to 1 p.m., Mondays only, on the south side of Shrode Avenue from Mountain Avenue to its easterly terminus in the unincorporated community of Duarte as established on June 14, 2022.
15. Adopt a traffic regulation order prohibiting parking for street sweeping purposes from 9 a.m. to 1 p.m., Mondays only, on the south side of Shrode Avenue from Mountain Avenue to Citrus View Avenue in the unincorporated community of Duarte.

16. Adopt a traffic regulation order prohibiting parking for street sweeping purposes from 9 a.m. to 1 p.m., Tuesdays only, on the south side of Shrode Avenue from Citrus View Avenue to its easterly terminus in the unincorporated community of Duarte.

17. Rescind a traffic regulation order prohibiting parking for a period longer than 1 hour from 7 a.m. to 4 p.m., school days only, on the south side of Community Avenue between a point 455 feet and a point 570 feet east of Ramsdell Avenue in the unincorporated community of La Crescenta-Montrose as established on April 15, 2003.

18. Adopt a traffic regulation order establishing a passenger loading zone from 7 a.m. to 4 p.m., school days only, on the south side of Community Avenue between a point 455 feet and a point 570 feet east of Ramsdell Avenue in the unincorporated community of La Crescenta-Montrose.

19. Adopt a traffic regulation order requiring northbound and southbound traffic on 170th Street East to stop at its intersection with Avenue P, establishing all-way stop control in the unincorporated community of Lake Los Angeles.

20. Adopt a traffic regulation order prohibiting stopping at any time on both sides of Westridge Parkway between approximately 230 feet west of Stonegate Drive and Valencia Boulevard in the unincorporated community of Stevenson Ranch.

21. Adopt a traffic regulation order requiring eastbound and westbound traffic on Avenue Q-12 to stop at its intersection with 95th Street East, establishing all-way stop control in the unincorporated community of Sun Village.

PURPOSE/JUSTIFICATION OF RECOMMENDED ACTION

The purpose of the recommended traffic regulation actions is to adopt and/or rescind traffic regulation orders, which will allow Public Works to post or remove the corresponding regulatory and advisory signage. Public Works is recommending these actions to enhance traffic flow, facilitate street sweeping services, facilitate passenger loading at a school, and encourage parking turnover. These actions will benefit all users of the various roadways and will support Public Works' transportation priority to improve traffic safety. Requests for the traffic regulations were generated by residents or community groups. The affected areas are indicated on the enclosed maps (Enclosures A, B, C, D, E, F, G, and H).

Implementation of Strategic Plan Goals

These recommendations support the County Strategic Plan: North Star 2, Foster Vibrant and Resilient Communities, Focus Area Goal D, Sustainability, Strategy i, Climate Health, by supporting multimodal transportation investments that improve safety and mobility, reduce traffic congestion, and reduce greenhouse gas emissions.

FISCAL IMPACT/FINANCING

There will be no impact to the County General Fund. Funding is included in the Road Fund (B03 – Services and Supplies) Fiscal Year 2024-25 Budget to cover the minor costs of installing and/or removing the necessary signs and markings.

FACTS AND PROVISIONS/LEGAL REQUIREMENTS

The California Vehicle Code authorizes the Board to implement these traffic regulations which are required prior to enforcement by the California Highway Patrol and the Sheriff's Department.

ENVIRONMENTAL DOCUMENTATION

The establishment of these regulations, including the installation or removal of related traffic control devices required to notify the motoring public is categorically exempt from the provisions of the California Environmental Quality Act pursuant to Section 15301(c) of the California Environmental Quality Act Guidelines and Class I(x) 7 of the Environmental Reporting Procedures and Guidelines approved by the Board on November 17, 1987.

IMPACT ON CURRENT SERVICES (OR PROJECTS)

Implementation of these traffic controls will have a positive impact by enhancing traffic flow and safety. Upon the Board's approval of this traffic regulation, the corresponding signs and markings will be installed within 12 weeks.

CONCLUSION

Please return one adopted copy of this letter to Public Works, Traffic Safety and Mobility Division. Also, please forward adopted copies of this letter to the Sheriff's Department, Parking Enforcement Detail; and the California Highway Patrol's Altadena, Antelope Valley, Baldwin Park, and Newhall offices.

Respectfully submitted,



MARK PESTRELLA, PE

Director

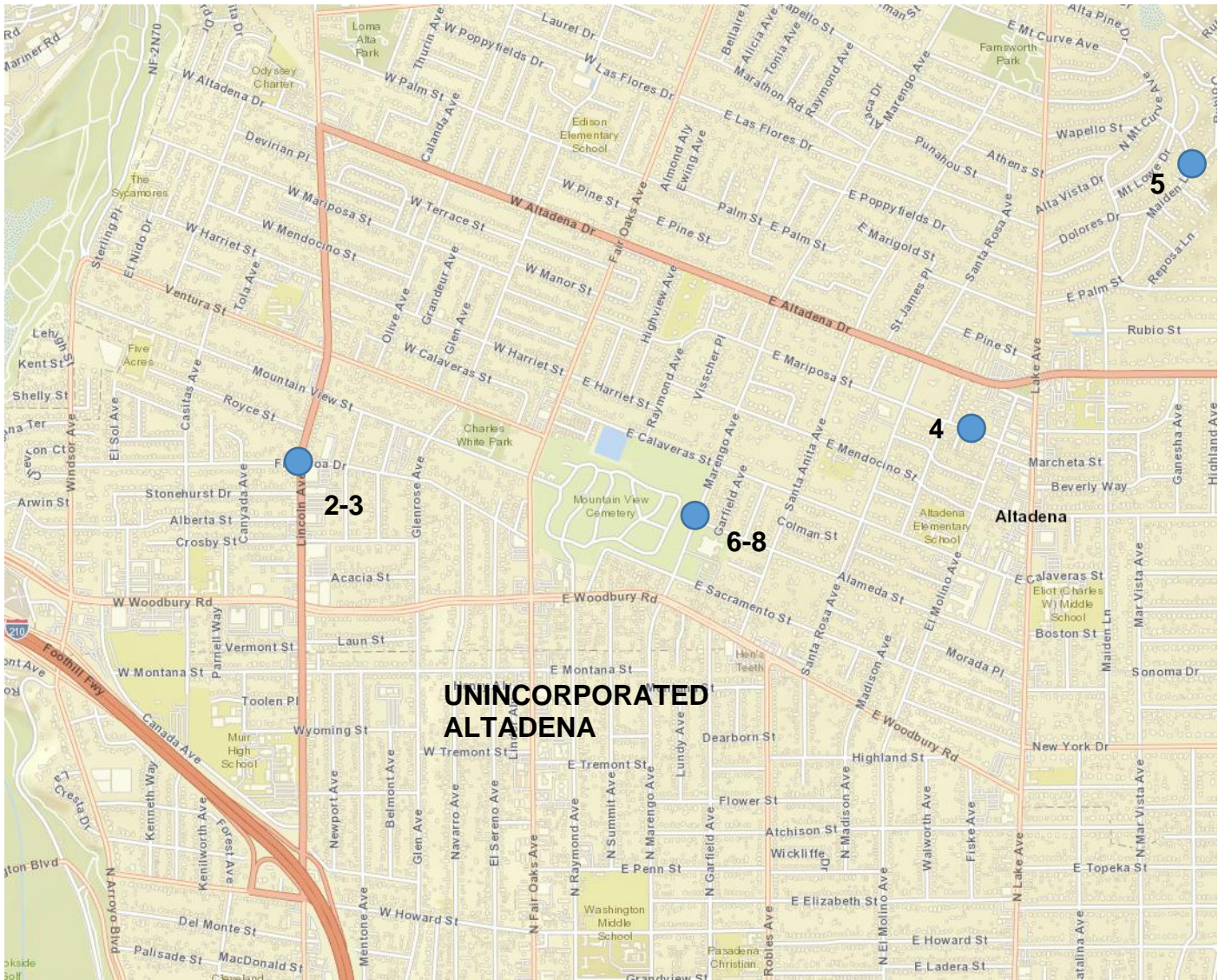
MP:EK:wm


Enclosures

- c: Chief Executive Office (Chia-Ann Yen)
- County Counsel
- Executive Office
- Sheriff's Department (Parking Enforcement Detail)
- California Highway Patrol (Altadena, Antelope Valley, Baldwin Park, and Newhall)



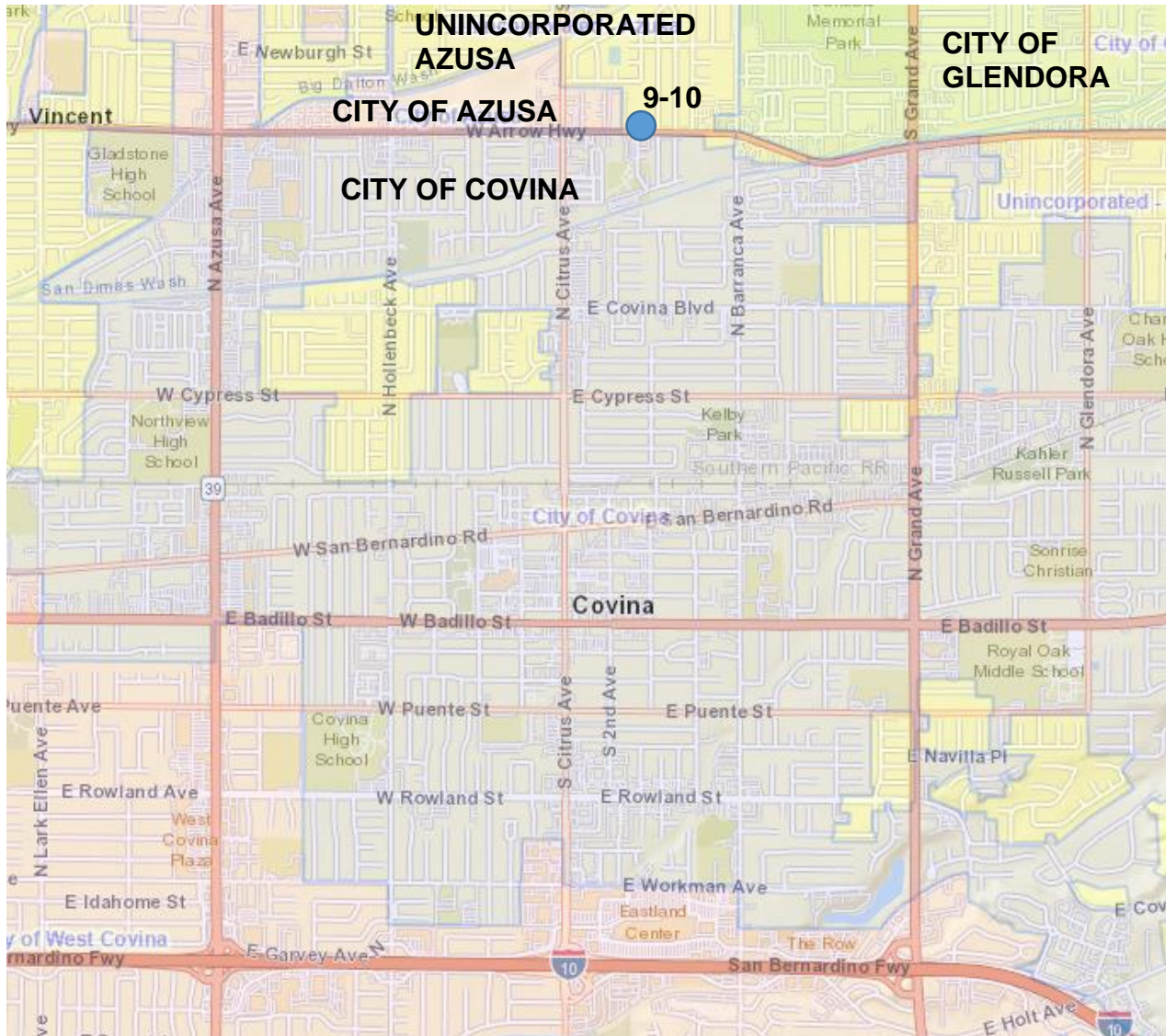
**ENCLOSURE A
PROPOSED TRAFFIC REGULATIONS
ALTADENA
SUPERVISORIAL DISTRICT 5**



 Items for adoption in the Board letter



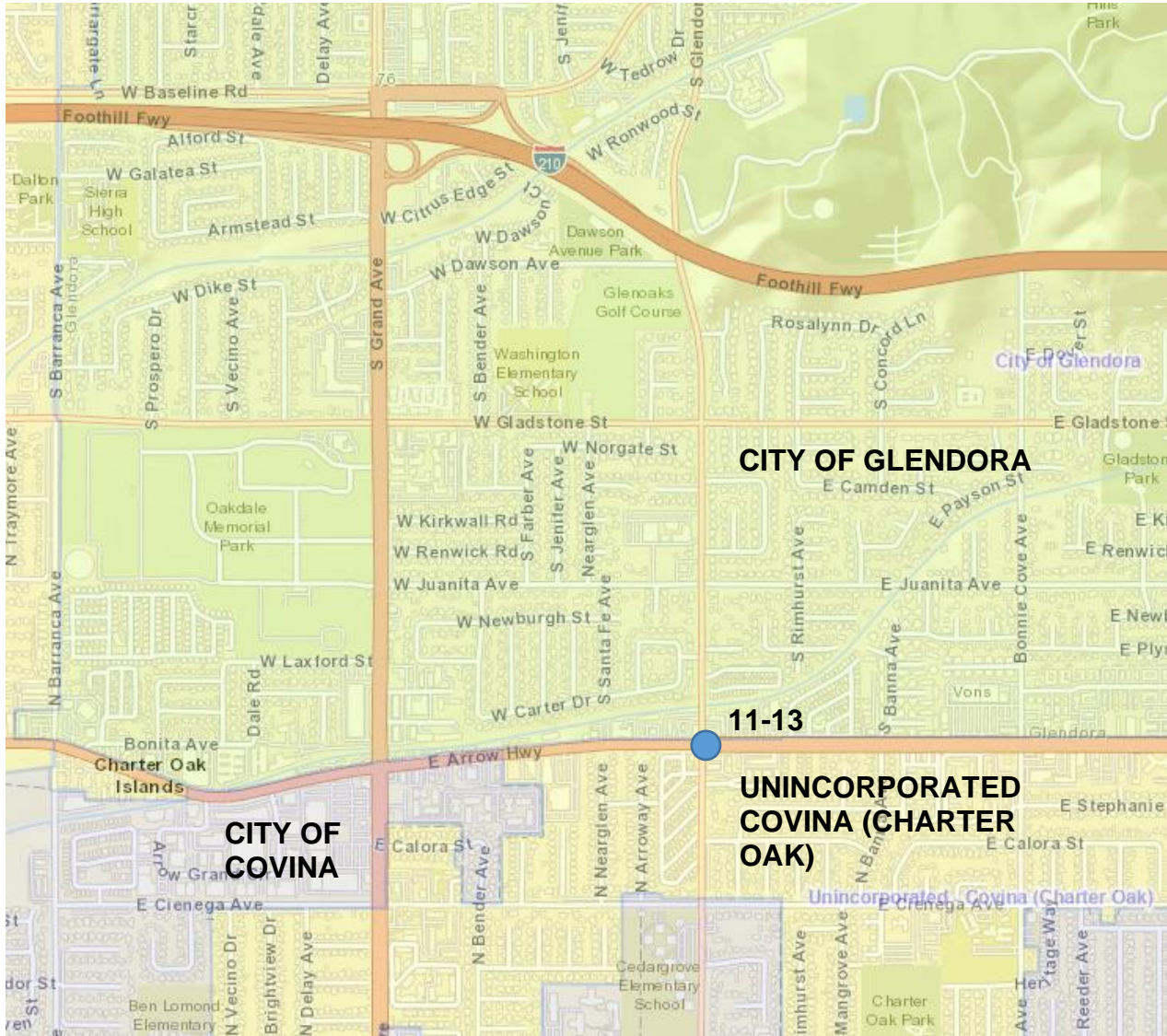
**ENCLOSURE B
PROPOSED TRAFFIC REGULATIONS
AZUSA
SUPERVISORIAL DISTRICT 5**




● Items for adoption in the Board letter



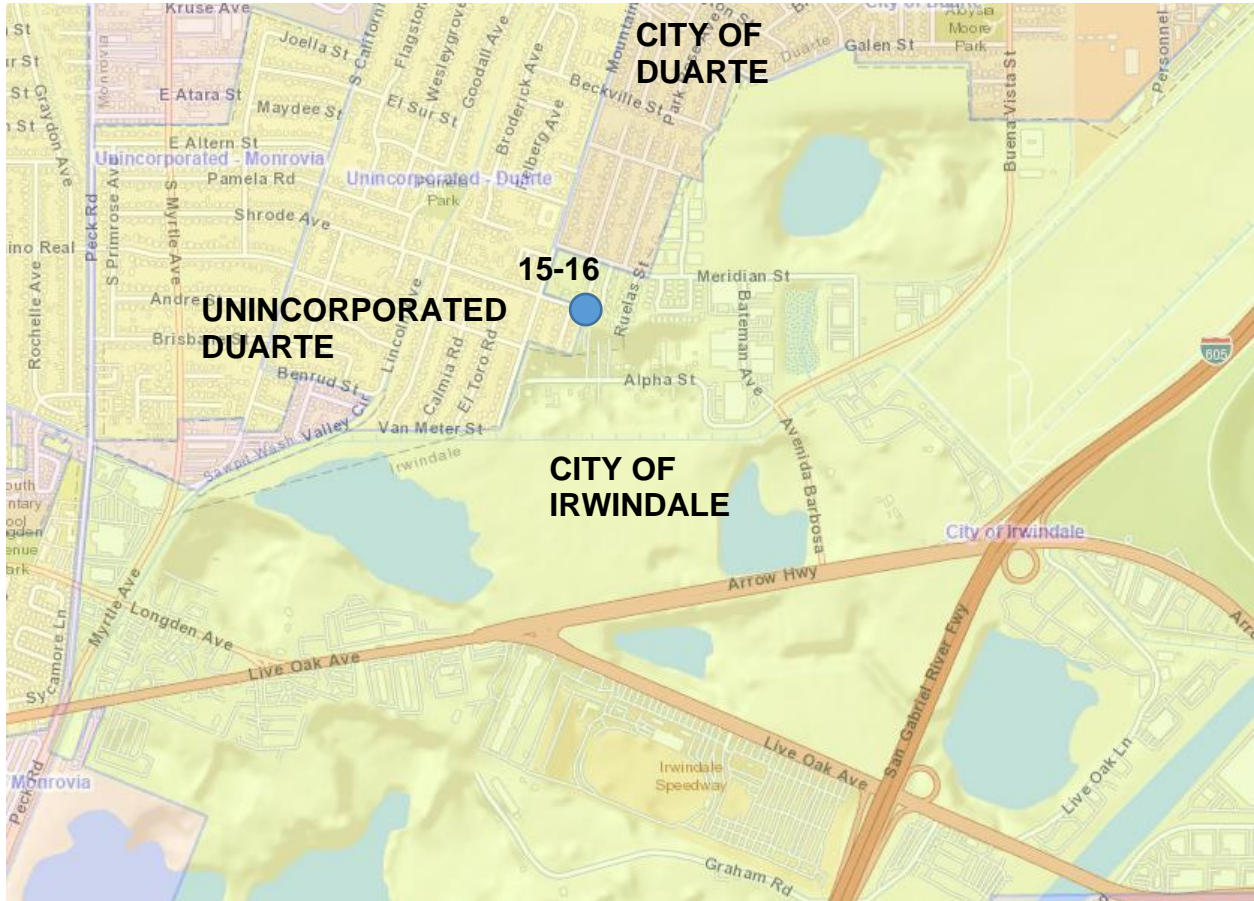
**ENCLOSURE C
PROPOSED TRAFFIC REGULATIONS
COVINA (CHARTER OAK)
SUPERVISORIAL DISTRICT 5**



 Items for adoption in the Board letter



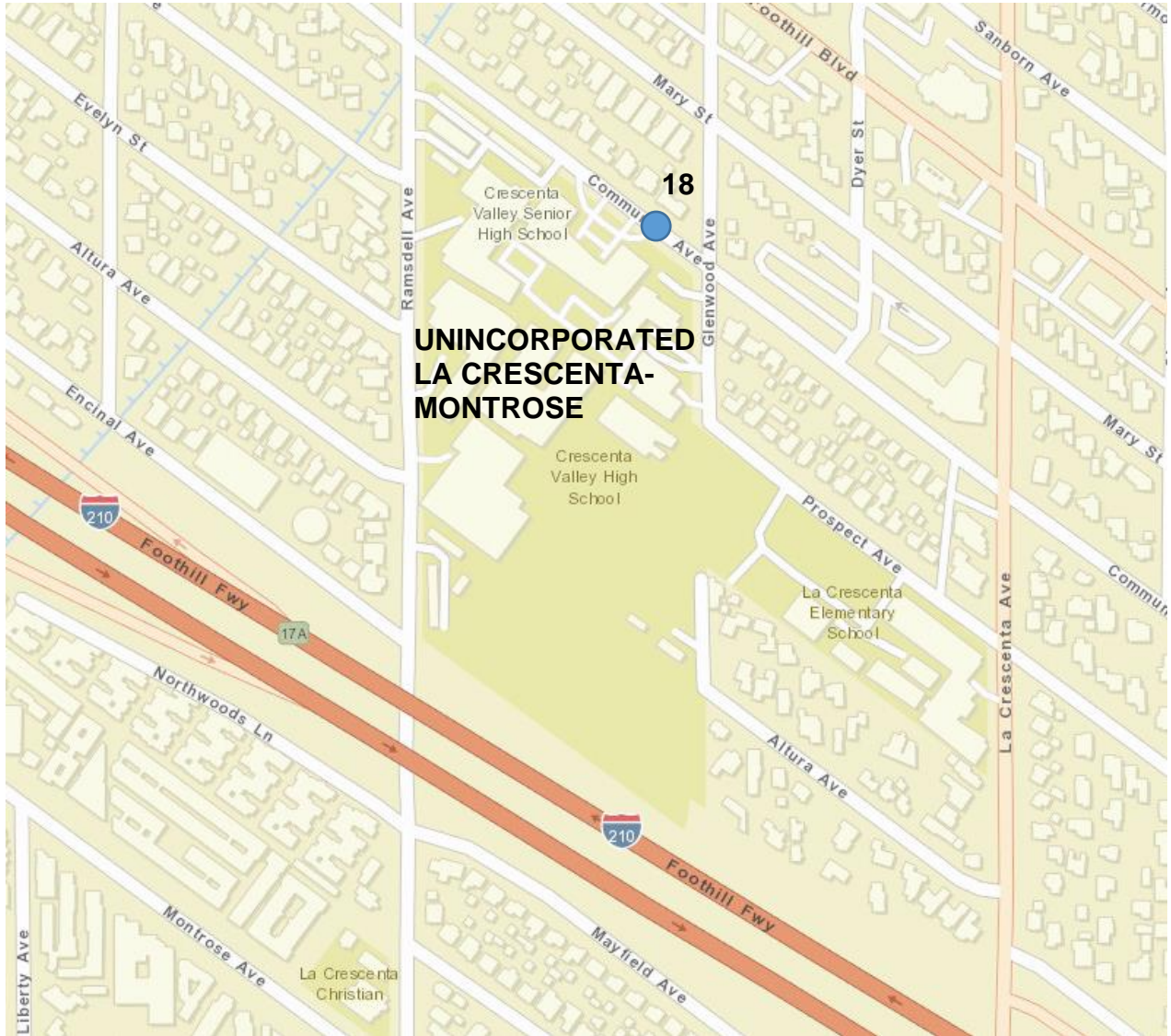
**ENCLOSURE D
PROPOSED TRAFFIC REGULATIONS
DUARTE
SUPERVISORIAL DISTRICT 5**



● Items for adoption in the Board letter



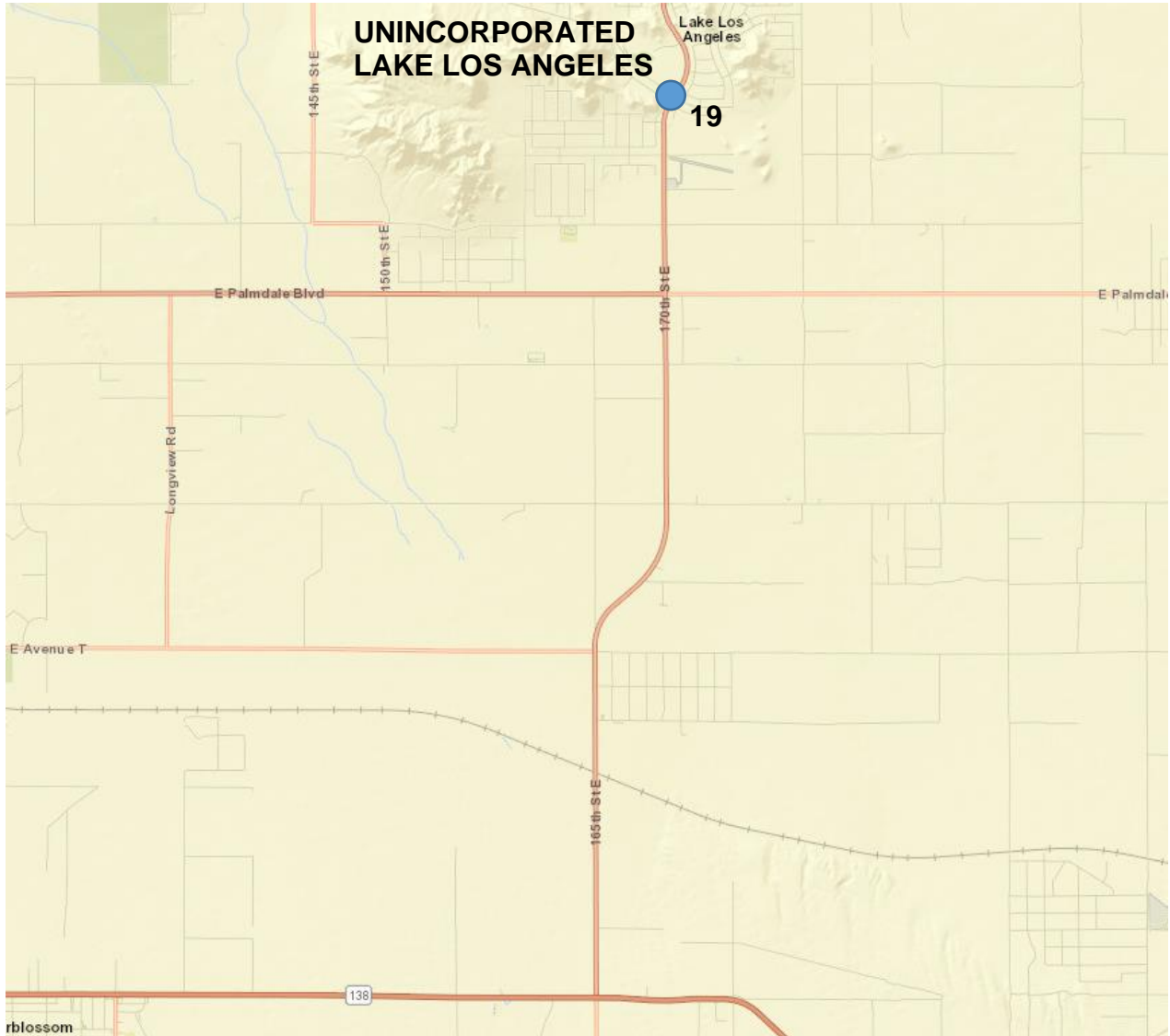
**ENCLOSURE E
PROPOSED TRAFFIC REGULATION
LA CRESCENTA-MONTROSE
SUPERVISORIAL DISTRICT 5**



● Item for adoption in the Board letter



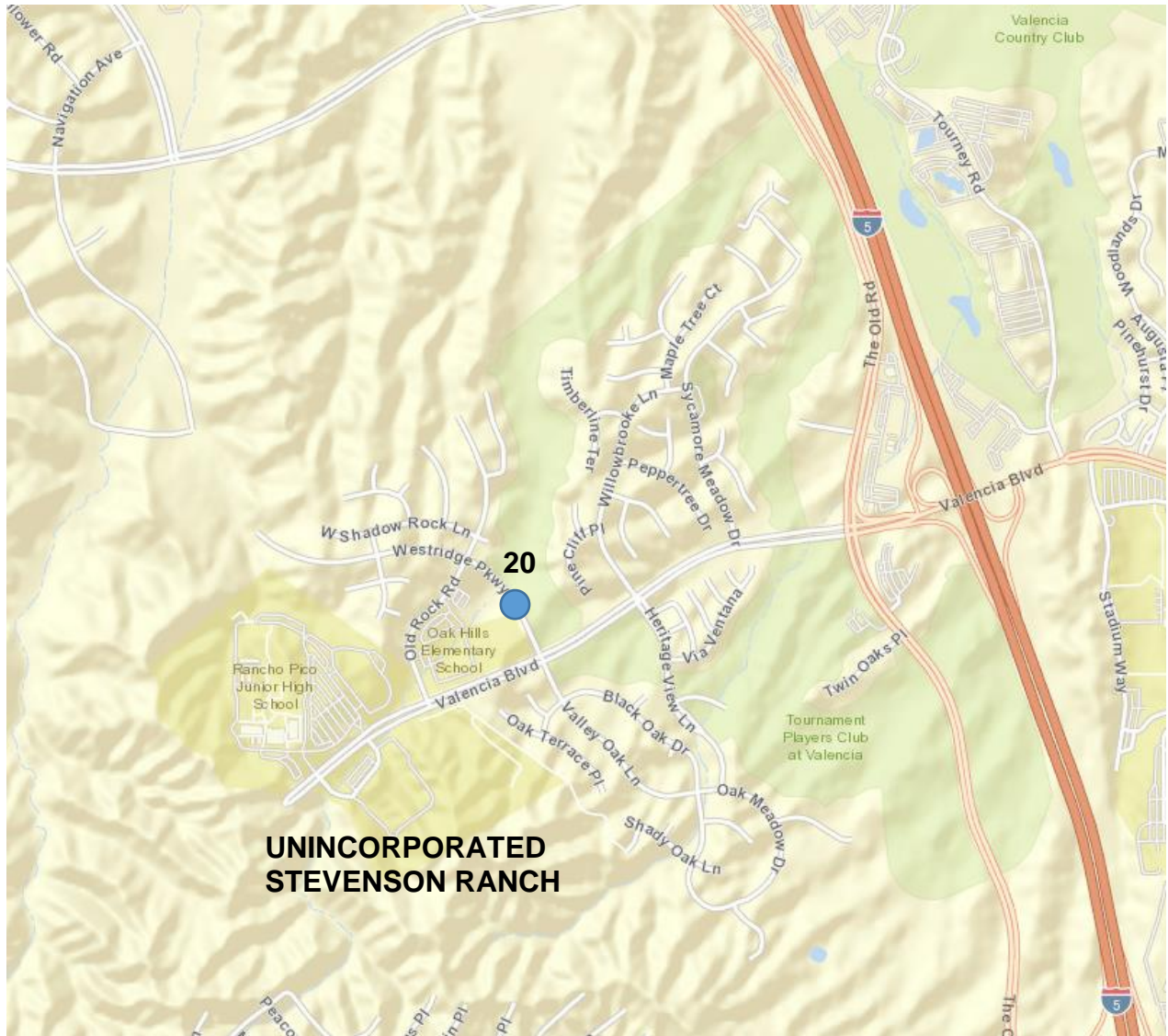
**ENCLOSURE F
PROPOSED TRAFFIC REGULATION
LAKE LOS ANGELES
SUPERVISORIAL DISTRICT 5**



● Item for adoption in the Board letter



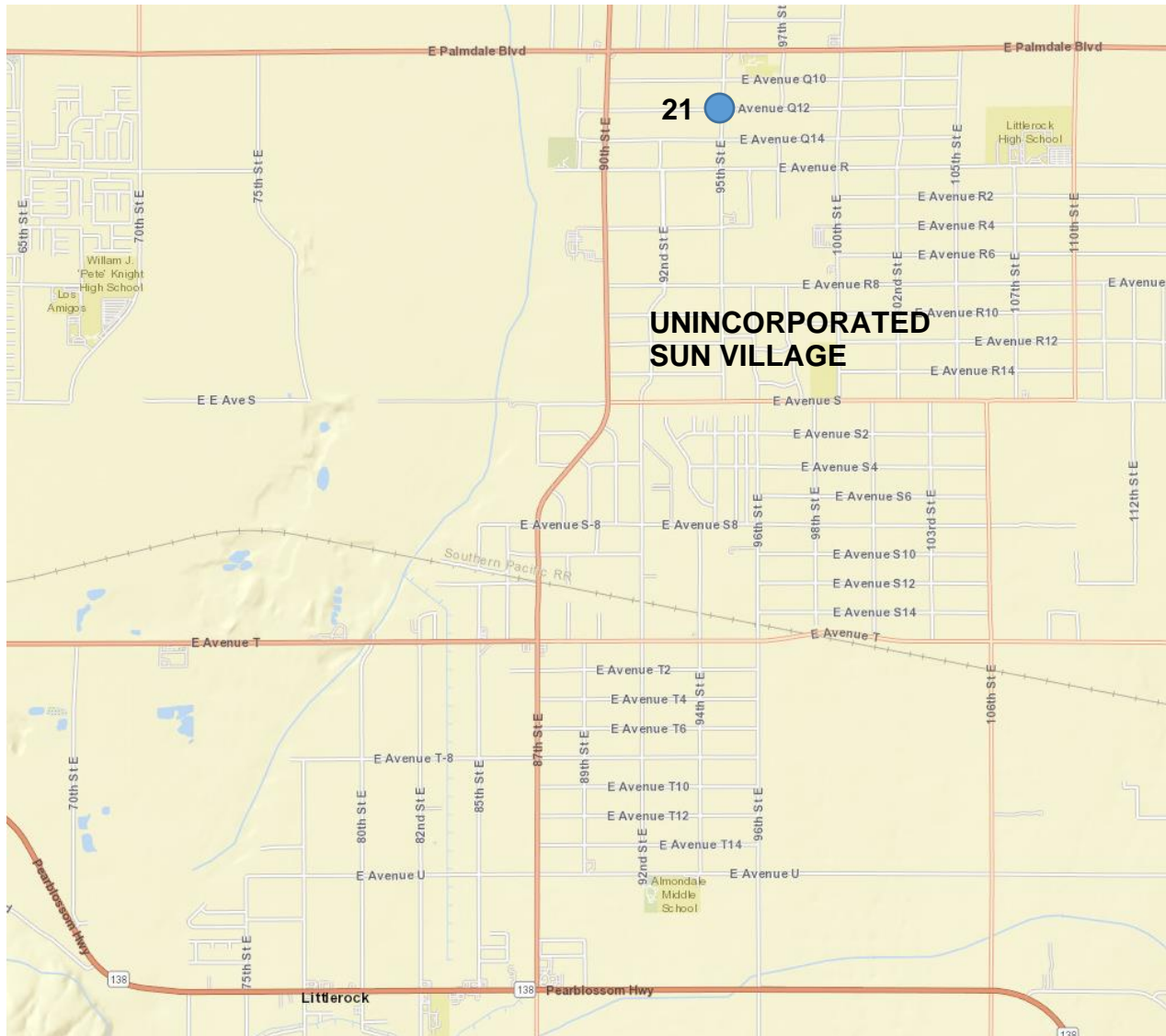
**ENCLOSURE G
PROPOSED TRAFFIC REGULATION
STEVENSON RANCH
SUPERVISORIAL DISTRICT 5**



● Item for adoption in the Board letter



**ENCLOSURE H
PROPOSED TRAFFIC REGULATION
SUN VILLAGE
SUPERVISORIAL DISTRICT 5**



● Item for adoption in the Board letter