



MARK PESTRELLA, Director

**COUNTY OF LOS ANGELES  
DEPARTMENT OF PUBLIC WORKS**

*"To Enrich Lives Through Effective and Caring Service"*

900 SOUTH FREMONT AVENUE  
ALHAMBRA, CALIFORNIA 91803-1331  
Telephone (626) 458-5100  
<http://dpw.lacounty.gov>

ADDRESS ALL CORRESPONDENCE TO:  
P.O. BOX 1460  
ALHAMBRA, CALIFORNIA 91802-1460

IN REPLY PLEASE  
REFER TO FILE

June 11, 2024

The Honorable Board of Supervisors  
County of Los Angeles  
383 Kenneth Hahn Hall of Administration  
500 West Temple Street  
Los Angeles, California 90012

Dear Supervisors:

**ADOPTED**

BOARD OF SUPERVISORS  
COUNTY OF LOS ANGELES

3 June 11, 2024

EDWARD YEN  
EXECUTIVE OFFICER

**PUBLIC HEARING  
ENVIRONMENTAL SERVICES CORE SERVICE AREA  
SEWER SERVICE CHARGE ANNUAL REPORT FOR  
THE CONSOLIDATED SEWER MAINTENANCE DISTRICT AND  
THE MARINA SEWER MAINTENANCE DISTRICT  
(ALL SUPERVISORIAL DISTRICTS)  
(4 VOTES)**

**SUBJECT**

Public Works is seeking Board approval to adopt the Sewer Service Charge Annual Report for Fiscal Year 2024-25 to allow the Consolidated Sewer Maintenance District and the Marina Sewer Maintenance District to continue to collect the sewer service charge with the annual property taxes for Fiscal Year 2024-25.

**IT IS RECOMMENDED THAT THE BOARD:**

AFTER THE PUBLIC HEARING:

1. Find that the proposed actions are not a project under the California Environmental Quality Act for the reasons stated in the Board letter and the record.
2. Consider all objections and protests against the proposed Sewer Service Charge Annual Report for Fiscal Year 2024-25 for the Consolidated Sewer Maintenance District and the Marina Sewer Maintenance District.
3. To the extent that no majority protest exists against the Sewer Service Charge Annual Report for

Fiscal Year 2024-25:

- a. Adopt the Sewer Service Charge Annual Report for Fiscal Year 2024-25 for the Consolidated Sewer Maintenance District and the Marina Sewer Maintenance District.
  - b. Upon the adoption of the Sewer Service Charge Annual Report for Fiscal Year 2024-25, instruct the Executive Officer of the Board to file with the Auditor-Controller before August 10, 2024, a copy of the Sewer Service Charge Annual Report for Fiscal Year 2024-25 with a signed statement by the Executive Officer of the Board that the report has been adopted by the Board.
  - c. Instruct the Auditor-Controller, upon receipt of the adopted Sewer Service Charge Annual Report for Fiscal Year 2024-25 from the Executive Officer of the Board to enter the amounts of the charges against the respective lots or parcels of land as they appear on the current assessment roll.
4. If a majority written protest against the proposed Sewer Service Charge Annual Report for Fiscal Year 2024-25 exists, refer the item back to Public Works. If the Sewer Service Charge Annual Report is not adopted, the sewer service charge for the Consolidated Sewer Maintenance District, its zones, and the Marina Sewer Maintenance District shall be collected separately from the annual property taxes and shall not constitute a lien against any parcel or parcels of land.

#### **PURPOSE/JUSTIFICATION OF RECOMMENDED ACTION**

Approval of the recommended actions to adopt the Sewer Service Charge (SSC) Annual Report for Fiscal Year 2024-25 (Enclosure A) will find that they are not subject to the California Environmental Quality Act (CEQA) and allow the Consolidated Sewer Maintenance District (CSMD) and the Marina Sewer Maintenance District (Marina SMD) (hereinafter collectively referred to as the Districts) to continue to collect their needed operating revenue with the annual property taxes for Fiscal Year 2024-25.

The annual SSC for the Districts, Accumulative Capital Outlay (ACO) Fund for the CSMD, and the following zones of the CSMD are recommended to remain at their current Fiscal Year 2023-24 levels: Brassie Lane Zone, Foxpark Drive Zone, Malibu Mesa Zone, Malibu Zone, Topanga Zone, and Summit Road Zone. Based on increases approved by the Board on June 23, 2020, the Aneta Zone located in the unincorporated Del Rey community in the Second Supervisorial District, the Lake Hughes Zone located in the unincorporated community of Lake Hughes in the Fifth Supervisorial District, and the Trancas Zone located in the City of Malibu in the Third Supervisorial District, will implement preapproved annual rate increases as follows: Aneta Zone rate increase of \$8, from \$202 to \$210; Lake Hughes Zone rate increase of \$47, from \$1,176 to \$1,223; and Trancas Zone rate increase of \$128, from \$3,211 to \$3,339 in Fiscal Year 2024-25.

The Districts are not "special districts" as that term is defined in State law. Rather, the Districts were established for purposes of collecting a service charge directly from affected property owners, pursuant to section 5470 et seq of the Health and Safety Code and Title 20 of the Los Angeles County Code. The established territory of the Districts spans significant parts of 37 cities and unincorporated areas.

The Districts do not receive any General Fund revenue. Instead, the Board has made a finding that the most equitable means to raise revenue is to levy an SSC based on the land use of each parcel of property within the Districts.

The CSMD's base annual service charge of \$41.50 per single-family home is for the operation and maintenance of the wastewater collection system within its established service territory. There is also a \$9 per single-family home charge to fund the ACO projects, such as pipe repair, rehabilitation or replacement, relief sewers, major improvements to sewage pump stations, and the Condition-Assessment Program.

The Marina SMD's base annual service charge of \$190 per a typical single-family home is for the operation and maintenance of the wastewater collection system within Marina del Rey District and includes the costs associated with wastewater treatment carried out by the City of Los Angeles under an agreement previously approved by the Board.

There are nine zones within the CSMD, which receive special services that are distinct from the general services provided throughout the CSMD. Consequently, properties within these nine zones are assessed an additional charge.

### **Implementation of Strategic Plan Goals**

These recommendations support the County Strategic Plan: North Star 2, Foster Vibrant and Resilient Communities, Focus Area Goal D, Sustainability, Strategy i, Climate Health, by improving the environmental, economic, and social well-being of our communities while maximizing and leveraging resources through the collection of adequate revenue to provide for the maintenance of the sewer infrastructure in a manner that protects public health and safety, enhances the environment, and protects and conserves the water resources of our communities.

### **FISCAL IMPACT/FINANCING**

There will be no impact to the County General Fund. The collection of the SSCs on the tax roll is a cost-effective means for generating sufficient revenue to finance the operation and maintenance costs of the Districts, ACO Fund of the CSMD, and nine zones of the CSMD for Fiscal Year 2024-25. Revenues from the SSC are included in the Sewer Maintenance Districts Funds (Funds GA9, GB1, GB4, GB8, GC2, GC3, GC4, GC5, GC6, GC9, GD2, and J14, Revenue Sources 9570 and 9614) Fiscal Year 2024-25 Budgets.

### **FACTS AND PROVISIONS/LEGAL REQUIREMENTS**

These recommended actions are required to reauthorize annual SSC rates for the various funds of the Districts and allow the collection of these charges with the annual property taxes in Fiscal Year 2024-25.

Pursuant to Section 5473 of the Health and Safety Code, the Districts are required to prepare and file with the Executive Officer of the Board a written report (SSC Annual Report) containing a description of each parcel receiving services and the amount of charge for each parcel for the subsequent year. Enclosed is a copy of the Sewer Maintenance – Tax Rate Area Report and Boundary Maps (Enclosure B), which identifies the parcels within the Districts and nine zones of the CSMD that are subject to the charges.

In accordance with Section 5473.1 of the Health and Safety Code, the notice of filing of the SSC Annual Report and of a time and place of hearing thereon was published once a week for two successive weeks in a newspaper of general circulation pursuant to Section 6066 of the Government Code.

Section 5473.2 of the Health and Safety Code requires that the Board consider all objections or protests, if any, to the SSC Annual Report. In the event of that protest is made by the owners of a majority of separate parcels of property, the SSC Annual Report for Fiscal Year 2024-25 shall not be adopted, and the charges shall be collected separately from the tax roll and shall not constitute a lien against any parcel or parcels of land.

Section 5473.3 of the Health and Safety Code provides that upon the conclusion of the hearing, the Board may adopt, revise, change, reduce, or modify any charge or overrule any or all objections and make a determination upon each charge as described in the report, which determination shall be final.

Section 5473.4 of the Health and Safety Code requires that on or before the tenth day of August of each year, the Executive Officer of the Board must file with the Auditor-Controller a copy of the SSC Annual Report for Fiscal Year 2024-25 with a signed statement indicating that the report has been adopted by the Board.

If the Board adopts the SSC Annual Report, the Auditor-Controller must enter the amounts of the charges against the respective lots or parcels of land as it appears on the current assessment roll.

The Notice of Public Hearing relating to this matter have been reviewed and approved as to form by County Counsel.

### **ENVIRONMENTAL DOCUMENTATION**

The recommended actions are not subject to CEQA because they are activities that are excluded from the definition of a project by Section 21065 of the Public Resources Code and Section 15378, Subdivision (b) of the State CEQA Guidelines. This proposed action to adopt the SSC Annual Report for Fiscal Year 2024-25 would create a government funding mechanism that does not involve any commitment to a specific project that may result in a potentially significant impact on the environment.

### **IMPACT ON CURRENT SERVICES (OR PROJECTS)**

Approval of the SSC Annual Report will provide for the collection of revenue necessary for the maintenance of wastewater facilities within the territory of the Districts.

**CONCLUSION**

Please return two adopted copies of this letter and the SSC Annual Report for Fiscal Year 2024-25 to Public Works, Sewer Maintenance Division.

Respectfully submitted,

A handwritten signature in black ink, appearing to read "Mark Pestrella". The signature is fluid and cursive, with the first name "Mark" and last name "Pestrella" clearly distinguishable.

MARK PESTRELLA, PE  
Director

MP:AN:vr

Enclosures

c: Auditor-Controller  
Chief Executive Office (Chia-Ann Yen)  
County Counsel  
Executive Office

# **ENCLOSURE A**

**LOS ANGELES COUNTY PUBLIC WORKS**  
**SEWER SERVICE CHARGE ANNUAL REPORT**

**FISCAL YEAR 2024-25**

**CONSOLIDATED SEWER MAINTENANCE DISTRICT AND  
MARINA SEWER MAINTENANCE DISTRICT**

## TABLE OF CONTENTS

<u>Contents</u>	<u>Page</u>
Introduction	2
Consolidated Sewer Maintenance District	2
Special Zones	3
Marina Sewer Maintenance District	4
Sewer Service Charge Rate Increase Based on Consumer Price Index	4
Identification of Parcels to be Charged	4
Districts and Zones	5-6



**LOS ANGELES COUNTY PUBLIC WORKS  
SEWER SERVICE CHARGE ANNUAL REPORT  
FISCAL YEAR 2024-25  
CONSOLIDATED SEWER MAINTENANCE DISTRICT AND  
MARINA SEWER MAINTENANCE DISTRICT**

**INTRODUCTION**

The County of Los Angeles Sewer Maintenance Districts (Districts) are made up of the Consolidated Sewer Maintenance District (CSMD) and the Marina Sewer Maintenance District (Marina SMD). Together, the Districts' systems serve more than 500,000 parcels and a population of approximately 2 million people within the unincorporated areas of the County and 37 cities. The system includes over 4,600 miles of sanitary sewers, 88 pump stations, and 4 water pollution control plants.

It is essential that operation and maintenance of these sewage collection and treatment systems be continued without interruption to protect public health and safety. Funding must be available to pay the costs of repairing and cleaning sewers, operating pumping stations and water pollution control plants, and to provide ongoing preventive maintenance.

In July 1978, the Board adopted ordinances to collect the necessary funding for the Districts, including the Zones within the CSMD, on the tax roll as a sewer service charge (SSC).

**CONSOLIDATED SEWER MAINTENANCE DISTRICT**

Authorization for the existing annual SSC for the CSMD is established in Volume 5, Title 20, Division 3, Chapter 20.40 of the Los Angeles County Code (County Code), as amended. The annual SSC levied upon each parcel of real property within the CSMD is calculated by multiplying the basic annual sewage unit charge by the number of sewage units represented by the current land use as shown in Table A of the County Code.

The current Fiscal Year (FY) 2023-24 basic annual sewage unit charge for each sewage unit is \$41.50 and will remain the same for FY 2024-25. Multiple residential, certain commercial, and industrial properties are assessed higher amounts based on their Assessor's Use Codes.

There is also an additional \$9 per sewage unit annual charge to fund the Accumulative Capital Outlay Fund, which was first established in 1987. This charge allows the CSMD to accumulate funds to pay for pipe replacement, relief sewers, major improvements to sewage pumping stations, and conduct the Condition-Assessment Program.

## **SPECIAL ZONES**

In addition to the aforementioned assessments, there are certain areas established as zones within the CSMD that are charged additional fees. These zone fees fund special services and/or facilities required by the zone in addition to those standard services provided throughout the CSMD. There are currently nine zones within the CSMD; however, the majority of the CSMD's territory is not included within the zones.

The proposed SSC for each Zone for FY 2024-25 is unchanged from the FY 2023-24 rates, except for Aneta, Trancas, and Lake Hughes Zone (shown in bold):

	<u>CURRENT 2023-24</u>	<u>PROPOSED 2024-25</u>
Aneta Zone	\$202/sewage unit	\$210*/sewage unit
Brassie Lane Zone	\$15.86/sewage unit	\$15.86/sewage unit
Foxpark Drive Zone (improved parcel only)	\$22.10/sewage unit	\$22.10/sewage unit (improved parcel only)
Lake Hughes Zone (improved parcel only)	\$1,176/sewage unit	\$1,223*/sewage unit (improved parcel only)
Malibu Zone (improved parcel only)	\$2,258/sewage unit	\$2,258/sewage unit (improved parcel only)
Malibu Mesa Zone (improved parcel only)	\$978/sewage unit	\$978/sewage unit (improved parcel only)
Summit Road Zone	\$15.26/sewage unit	\$15.26/sewage unit
Topanga Zone	\$650/sewage unit	\$650/sewage unit
Trancas Zone (improved parcel only)	\$3,211/sewage unit	\$3,339*/sewage unit (improved parcel only)

\*Rate increase based on Consumer Price Index as reflected in the ordinance adopted by the Board on June 23, 2020.

See pages 5 and 6 for descriptions of districts and zone functions.

## **MARINA SEWER MAINTENANCE DISTRICT**

The existing SSC for the Marina SMD is established in Chapter 20.44 of the County Code. Under these provisions, the annual SSC levied upon each possessory interest within the Marina SMD is computed by multiplying the amount of the sewage unit charge by the number of sewage units for the current land use as shown in Table A of the County Code. The basic annual sewage unit charge for each sewage unit is currently \$190 and will remain the same for FY 2024-25.

## **SSC RATE INCREASE BASED ON CONSUMER PRICE INDEX (CPI)**

Beginning on July 1, 2022, through July 1, 2026, in the Aneta Zone and July 1, 2024, through July 1, 2026, in the Lake Hughes and Trancas Zones, the amount of each fee may be adjusted by the lesser of: (1) the increase, if any, in the Consumer Price Index (CPI) for all urban consumers in the Los Angeles-Long Beach-Anaheim areas, as published by the U.S. Government Bureau of Labor Statistics, from March of the previous calendar year to March of the current calendar year, or (2) the increase, if any, in the cost of providing the service for which the fee is collected, as confirmed by the Auditor-Controller; the adjusted fee shall be rounded to the nearest dollar; provided, however, notwithstanding any of the above, no fee shall exceed the cost of providing the service for which the fee is collected.

## **IDENTIFICATION OF PARCELS TO BE CHARGED**

All parcels of real property within the 2024-25 Tax Rate Areas listed in pages 8 through 17, more particularly described in maps prepared in accordance with Section 327, Revenue and Taxation Code, and on file with the County of Los Angeles Assessor, will be charged a SSC in accordance with the County Code.

## DISTRICTS AND ZONES

DISTRICTS OR ZONE	SUPERVISORIAL DISTRICT	FUNCTION
Accumulative Capital Outlay	1, 2, 3, 4, 5	Provide for necessary sewer pipe replacement, relief sewers and upgrades to sewage pump stations, and to conduct the Condition-Assessment Program.
Aneta Zone	2	Pay disposal costs to the City of Los Angeles.
Brassie Lane Zone	5	Pay sewage conveyance costs to the City of La Verne.
CSMD	1, 2, 3, 4, 5	Operate and maintain complete sewer system; encompasses 99 percent of total system.
Foxpark Drive Zone	1	Pay sewage conveyance costs to the City of Pomona.
Lake Hughes Zone	5	Provide funds for the operation, maintenance, and rehabilitation of the water pollution control plant.
Malibu Zone	3	Provide funds for the operation, maintenance, and rehabilitation of the water pollution control plant.
Malibu Mesa Zone	3	Provide funds for the operation, maintenance, and rehabilitation of the water pollution control plant.
Marina SMD	2	Operate and maintain complete sewer system. Has contractual obligation with the City of
Summit Road Zone	5	Pay sewage conveyance costs to the City of La Verne.

<b>DISTRICT OR ZONE</b>	<b>SUPERVISORIAL DISTRICT</b>	<b>FUNCTION</b>
Topanga Zone	3	Pay disposal costs to Las Virgenes Municipal Water District.
Trancas Zone	3	Provide funds for the operation, maintenance, and rehabilitation of the water pollution control plant.

**ENCLOSURE B**

Los Angeles County Public Works  
Sewer Maintenance Districts  
Tax Rate Area Report and Boundary Maps

CSMD	157	450	884	1024	1090	1146	1221	1340	1473	1595	1745	1984
57	162	508	885	1025	1091	1147	1223	1345	1474	1597	1754	1990
75	165	520	887	1026	1093	1148	1224	1347	1476	1600	1759	1996
76	166	521	893	1028	1097	1150	1225	1352	1481	1601	1760	1999
77	167	522	896	1029	1098	1153	1226	1353	1482	1604	1761	2014
78	174	526	906	1030	1099	1157	1227	1358	1486	1607	1762	2027
82	175	532	908	1032	1100	1158	1228	1369	1488	1609	1763	2031
83	176	554	932	1033	1101	1160	1229	1370	1495	1615	1764	2032
84	177	558	933	1034	1102	1161	1230	1371	1498	1616	1765	2033
85	178	567	935	1036	1104	1163	1232	1372	1501	1621	1767	2038
86	185	569	936	1037	1105	1164	1235	1374	1504	1623	1769	2039
87	186	584	940	1038	1108	1166	1237	1375	1505	1624	1774	2040
88	187	597	947	1040	1109	1169	1240	1380	1511	1627	1775	2049
90	188	603	955	1041	1110	1170	1242	1381	1516	1630	1781	2052
91	191	612	956	1043	1111	1173	1243	1383	1519	1633	1782	2054
93	192	613	964	1044	1112	1175	1246	1384	1520	1635	1783	2061
94	196	631	965	1045	1113	1176	1247	1385	1530	1639	1790	2066
96	205	634	977	1046	1114	1177	1248	1386	1533	1644	1791	2068
97	223	635	984	1047	1115	1179	1249	1387	1534	1647	1792	2084
98	229	636	985	1048	1116	1180	1251	1389	1540	1655	1810	2086
99	234	637	986	1050	1118	1182	1253	1395	1548	1658	1811	2087
104	250	638	989	1052	1119	1183	1255	1397	1552	1661	1824	2088
106	261	639	990	1057	1120	1185	1256	1398	1553	1664	1825	2090
108	266	640	991	1058	1121	1187	1257	1399	1557	1669	1826	2092
112	270	642	992	1062	1122	1188	1261	1400	1558	1671	1827	2093
113	281	643	996	1063	1123	1190	1263	1406	1560	1673	1828	2095
122	282	666	999	1064	1126	1191	1264	1409	1561	1674	1830	2096
123	325	669	1000	1065	1127	1192	1265	1410	1563	1677	1831	2098
124	330	679	1003	1066	1128	1193	1267	1411	1565	1683	1858	2099
126	331	699	1005	1067	1130	1194	1268	1412	1566	1684	1859	2100
127	353	729	1007	1068	1131	1196	1269	1413	1568	1701	1861	2102
128	360	732	1009	1069	1132	1197	1270	1416	1572	1708	1945	2103
130	364	750	1010	1073	1133	1198	1276	1417	1575	1710	1952	2111
139	373	763	1011	1075	1134	1200	1278	1421	1576	1715	1955	2120
141	386	765	1013	1077	1135	1202	1299	1423	1577	1719	1956	2126
142	397	777	1014	1079	1136	1206	1308	1426	1580	1720	1964	2128
147	405	793	1015	1080	1137	1208	1310	1427	1584	1722	1965	2131
148	418	801	1016	1081	1138	1211	1311	1430	1585	1727	1967	2133
150	420	802	1018	1083	1139	1213	1312	1434	1587	1728	1968	2135
153	431	803	1019	1084	1140	1214	1314	1436	1588	1733	1971	2136
154	439	824	1020	1087	1141	1217	1315	1437	1589	1735	1972	2139
155	443	826	1021	1088	1142	1218	1318	1438	1592	1740	1977	2140
156	448	837	1023	1089	1144	1220	1327	1470	1594	1741	1981	2142

Los Angeles County Public Works  
Sewer Maintenance Districts  
Tax Rate Area Report and Boundary Maps

2144	2246	2509	2661	2887	3002	3217	3388	3527	3603	3725	3824	3976
2150	2247	2520	2662	2888	3006	3219	3396	3528	3604	3726	3825	3977
2151	2248	2521	2665	2889	3011	3222	3398	3530	3605	3727	3826	3978
2152	2252	2522	2668	2890	3014	3223	3399	3531	3606	3728	3835	3984
2153	2253	2523	2669	2892	3016	3225	3402	3532	3607	3732	3836	3985
2156	2254	2524	2672	2894	3017	3226	3404	3533	3608	3739	3837	3987
2157	2259	2525	2677	2901	3018	3227	3406	3534	3609	3740	3838	3988
2167	2260	2526	2681	2902	3026	3234	3407	3535	3611	3741	3839	3992
2168	2261	2528	2682	2903	3033	3235	3408	3536	3614	3742	3843	3993
2172	2264	2550	2684	2904	3036	3237	3413	3537	3615	3744	3844	3996
2173	2265	2576	2685	2910	3038	3238	3415	3538	3618	3745	3845	3997
2175	2267	2577	2688	2913	3043	3243	3416	3539	3625	3747	3846	3998
2178	2269	2584	2691	2923	3044	3261	3417	3540	3633	3753	3847	3999
2179	2271	2585	2692	2924	3061	3272	3418	3541	3634	3754	3848	4000
2181	2273	2586	2700	2929	3063	3280	3419	3542	3635	3758	3849	4002
2182	2274	2591	2701	2933	3071	3288	3420	3543	3636	3763	3855	4008
2185	2275	2592	2703	2935	3074	3296	3422	3544	3637	3771	3888	4012
2187	2276	2593	2707	2937	3075	3302	3423	3546	3642	3773	3889	4013
2189	2277	2594	2708	2938	3076	3306	3426	3547	3643	3777	3896	4016
2192	2280	2595	2713	2939	3078	3315	3427	3548	3644	3778	3897	4029
2194	2288	2597	2715	2940	3080	3317	3430	3550	3645	3780	3900	4030
2195	2291	2598	2716	2941	3084	3318	3432	3551	3652	3781	3908	4036
2196	2293	2599	2720	2945	3097	3320	3461	3552	3656	3782	3909	4043
2200	2297	2600	2736	2946	3108	3329	3473	3554	3657	3783	3910	4052
2206	2298	2601	2738	2947	3109	3330	3474	3556	3662	3784	3917	4053
2207	2303	2603	2764	2948	3110	3336	3476	3558	3668	3785	3921	4054
2208	2306	2604	2798	2949	3113	3346	3486	3563	3677	3786	3928	4055
2210	2308	2608	2809	2951	3119	3348	3487	3564	3681	3788	3931	4060
2213	2315	2610	2811	2952	3122	3351	3488	3565	3682	3789	3941	4062
2216	2317	2611	2843	2956	3130	3352	3490	3566	3687	3797	3943	4063
2218	2322	2612	2852	2957	3144	3353	3500	3567	3688	3798	3944	4066
2219	2325	2613	2855	2964	3156	3354	3503	3568	3697	3801	3945	4070
2222	2336	2614	2856	2967	3157	3358	3504	3569	3698	3803	3948	4095
2223	2350	2618	2857	2970	3158	3362	3508	3572	3699	3806	3951	4097
2224	2369	2619	2861	2971	3161	3363	3511	3576	3700	3807	3953	4115
2226	2375	2646	2863	2973	3167	3365	3513	3578	3701	3808	3957	4117
2227	2387	2647	2864	2976	3179	3366	3516	3579	3702	3809	3960	4121
2228	2390	2653	2867	2979	3193	3368	3517	3580	3703	3812	3961	4122
2233	2392	2655	2869	2981	3203	3369	3518	3581	3704	3813	3962	4123
2239	2394	2656	2881	2982	3206	3371	3523	3582	3705	3819	3964	4126
2243	2395	2658	2883	2987	3209	3377	3524	3583	3706	3821	3968	4127
2244	2399	2659	2884	2988	3214	3386	3525	3595	3707	3822	3972	4129
2245	2467	2660	2885	2989	3215	3387	3526	3600	3719	3823	3975	4130



Los Angeles County Public Works  
Sewer Maintenance Districts  
Tax Rate Area Report and Boundary Maps

4131	4276	4360	4441	4529	4717	5064	5182	5352	5567	5660	5764	5954
4132	4284	4361	4444	4530	4722	5068	5183	5353	5568	5661	5779	5956
4133	4286	4362	4445	4531	4725	5075	5184	5354	5582	5662	5780	5957
4136	4290	4364	4446	4532	4735	5081	5186	5358	5583	5663	5783	5958
4139	4292	4368	4447	4533	4737	5082	5188	5360	5584	5664	5785	5959
4141	4293	4371	4448	4536	4861	5083	5189	5361	5585	5665	5791	5960
4142	4294	4384	4449	4537	4912	5088	5190	5362	5586	5667	5798	5961
4145	4295	4386	4450	4548	4916	5092	5191	5363	5587	5668	5805	5963
4147	4296	4387	4452	4549	4918	5094	5192	5364	5588	5671	5811	5964
4149	4297	4390	4454	4550	4926	5098	5194	5365	5589	5679	5826	5966
4153	4301	4391	4455	4551	4928	5102	5197	5366	5593	5680	5900	5967
4154	4302	4392	4457	4582	4929	5103	5198	5368	5594	5681	5901	5968
4155	4304	4393	4461	4583	4931	5105	5200	5369	5595	5682	5902	5969
4156	4305	4394	4462	4584	4935	5108	5204	5378	5609	5683	5903	5970
4169	4309	4395	4465	4585	4936	5113	5236	5415	5611	5684	5904	5978
4172	4310	4397	4466	4594	4938	5116	5237	5420	5613	5685	5905	5980
4173	4311	4398	4468	4597	4939	5117	5291	5429	5614	5687	5906	5982
4175	4312	4399	4471	4598	4943	5120	5297	5430	5616	5688	5907	5985
4177	4313	4400	4472	4599	4944	5123	5301	5433	5621	5689	5908	5986
4179	4317	4401	4473	4600	4947	5130	5306	5434	5623	5690	5909	5987
4185	4321	4402	4474	4601	4948	5133	5308	5435	5624	5692	5910	5988
4191	4324	4403	4475	4602	4954	5134	5310	5437	5625	5693	5912	5990
4195	4325	4405	4476	4603	4957	5135	5314	5447	5629	5694	5914	5991
4196	4326	4406	4480	4605	4964	5144	5319	5476	5630	5699	5916	5992
4230	4327	4407	4481	4606	4967	5149	5320	5477	5632	5701	5917	5995
4238	4330	4409	4482	4607	4972	5156	5322	5478	5633	5702	5921	5998
4239	4331	4411	4483	4608	4977	5157	5325	5479	5637	5703	5922	5999
4240	4332	4412	4486	4609	4979	5161	5326	5480	5638	5705	5923	6001
4241	4333	4415	4487	4611	4990	5164	5328	5484	5639	5706	5925	6003
4242	4334	4416	4488	4612	4991	5165	5331	5485	5640	5707	5928	6004
4244	4335	4419	4495	4613	4994	5166	5332	5489	5641	5708	5936	6005
4245	4336	4422	4498	4617	4997	5167	5333	5491	5645	5709	5939	6007
4248	4338	4423	4509	4623	5000	5168	5335	5497	5646	5710	5940	6009
4249	4342	4426	4515	4624	5001	5170	5337	5518	5647	5713	5942	6011
4250	4344	4427	4516	4625	5002	5171	5339	5519	5648	5714	5944	6012
4266	4345	4430	4517	4628	5012	5172	5340	5527	5650	5715	5945	6014
4267	4346	4431	4518	4633	5015	5174	5341	5535	5651	5716	5946	6022
4268	4350	4432	4521	4644	5017	5175	5342	5546	5653	5717	5947	6023
4269	4352	4433	4522	4645	5018	5176	5344	5547	5654	5728	5948	6025
4270	4353	4434	4524	4646	5025	5178	5346	5548	5655	5758	5949	6027
4271	4354	4438	4525	4648	5049	5179	5347	5549	5656	5759	5951	6032
4272	4355	4439	4526	4649	5062	5180	5349	5563	5658	5760	5952	6033
4273	4356	4440	4527	4650	5063	5181	5351	5564	5659	5761	5953	6034

Los Angeles County Public Works  
Sewer Maintenance Districts  
Tax Rate Area Report and Boundary Maps

6037	6272	6425	6520	6695	6859	7064	7229	7485	7648	7934	7991	8110
6038	6285	6427	6521	6696	6860	7085	7230	7488	7649	7935	7992	8111
6039	6286	6430	6522	6697	6863	7087	7235	7492	7650	7936	7993	8113
6040	6289	6431	6527	6699	6866	7088	7237	7494	7651	7937	7995	8115
6041	6292	6432	6530	6700	6867	7090	7238	7502	7652	7939	7996	8116
6042	6296	6433	6536	6701	6871	7093	7255	7508	7653	7941	7997	8117
6043	6309	6434	6537	6702	6875	7094	7260	7542	7655	7942	7998	8118
6044	6310	6435	6538	6703	6878	7095	7262	7551	7670	7944	7999	8119
6045	6316	6439	6545	6706	6879	7097	7263	7555	7674	7946	8000	8120
6046	6318	6441	6548	6707	6880	7099	7265	7556	7675	7947	8001	8124
6047	6319	6444	6558	6712	6882	7100	7271	7562	7677	7948	8002	8125
6050	6321	6445	6563	6713	6883	7103	7272	7567	7679	7949	8010	8126
6051	6323	6446	6567	6721	6885	7105	7273	7568	7681	7950	8015	8131
6057	6324	6447	6576	6724	6886	7106	7274	7569	7682	7952	8016	8133
6058	6327	6451	6579	6757	6887	7108	7277	7571	7684	7957	8018	8134
6059	6339	6454	6582	6767	6888	7109	7278	7572	7685	7958	8034	8139
6068	6343	6457	6583	6772	6890	7110	7290	7580	7688	7959	8036	8142
6099	6350	6458	6584	6773	6891	7112	7294	7581	7692	7960	8038	8145
6100	6351	6459	6585	6779	6892	7113	7300	7584	7696	7961	8039	8146
6108	6354	6466	6589	6785	6893	7114	7324	7586	7697	7962	8041	8147
6119	6355	6468	6593	6794	6898	7115	7339	7601	7698	7963	8042	8149
6140	6357	6480	6594	6795	6900	7116	7341	7603	7699	7964	8043	8150
6141	6360	6481	6595	6799	6901	7118	7343	7604	7706	7966	8044	8153
6142	6370	6482	6596	6800	6902	7119	7346	7606	7711	7967	8052	8155
6143	6371	6483	6597	6802	6904	7124	7348	7607	7712	7968	8057	8156
6147	6373	6484	6600	6805	6905	7125	7349	7608	7713	7969	8062	8158
6159	6374	6485	6608	6818	6906	7127	7350	7609	7714	7970	8067	8161
6181	6375	6487	6624	6821	6907	7128	7351	7617	7715	7971	8069	8162
6182	6378	6488	6631	6823	6908	7129	7354	7621	7716	7972	8071	8167
6185	6391	6490	6633	6831	6909	7132	7357	7622	7727	7973	8073	8168
6195	6392	6491	6635	6834	6910	7135	7358	7623	7728	7975	8082	8169
6223	6395	6492	6637	6837	6912	7145	7359	7625	7776	7977	8086	8174
6226	6396	6494	6638	6841	6913	7147	7362	7627	7782	7978	8087	8175
6248	6397	6498	6641	6842	6914	7151	7367	7631	7784	7979	8088	8176
6253	6398	6501	6642	6843	6915	7155	7371	7632	7785	7980	8089	8178
6261	6399	6503	6648	6846	6916	7164	7372	7633	7797	7981	8090	8182
6262	6400	6504	6649	6847	6918	7177	7373	7634	7815	7983	8093	8193
6263	6406	6509	6665	6848	6934	7179	7379	7635	7820	7984	8095	8196
6264	6408	6511	6671	6849	6983	7188	7382	7637	7893	7985	8096	8197
6266	6410	6513	6689	6850	7017	7191	7405	7642	7896	7986	8101	8201
6269	6412	6516	6690	6856	7018	7209	7462	7643	7897	7987	8103	8204
6270	6419	6518	6693	6857	7056	7214	7468	7644	7898	7988	8107	8207
6271	6423	6519	6694	6858	7057	7228	7473	7645	7933	7990	8109	8209

Los Angeles County Public Works  
Sewer Maintenance Districts  
Tax Rate Area Report and Boundary Maps

8210	8272	8352	8436	8499	8575	8823	9050	9106	9263	9368	9517	9628
8211	8274	8353	8439	8500	8576	8845	9051	9107	9265	9369	9518	9629
8212	8280	8354	8440	8501	8581	8847	9052	9109	9266	9375	9519	9630
8214	8282	8355	8441	8502	8582	8857	9053	9112	9270	9376	9521	9631
8216	8284	8356	8442	8503	8597	8858	9054	9113	9276	9377	9522	9633
8219	8286	8357	8443	8504	8600	8861	9055	9115	9280	9378	9523	9634
8221	8287	8358	8445	8505	8601	8865	9056	9116	9281	9379	9524	9654
8223	8288	8360	8446	8507	8619	8866	9060	9117	9283	9380	9525	9657
8226	8289	8361	8447	8509	8624	8905	9061	9118	9285	9381	9529	9658
8228	8290	8363	8448	8510	8625	8907	9062	9122	9286	9382	9530	9661
8229	8291	8364	8451	8512	8629	8912	9063	9123	9287	9383	9533	9662
8230	8292	8365	8452	8513	8642	8913	9064	9171	9288	9385	9534	9666
8231	8295	8366	8455	8514	8645	8969	9065	9177	9289	9389	9538	9667
8232	8296	8367	8456	8515	8646	8970	9066	9195	9298	9390	9546	9669
8233	8297	8368	8457	8516	8649	8971	9067	9196	9300	9394	9553	9671
8234	8300	8370	8458	8518	8651	8972	9068	9197	9301	9395	9557	9677
8235	8302	8371	8459	8519	8652	8973	9069	9207	9304	9397	9562	9678
8236	8313	8372	8460	8521	8653	8974	9070	9208	9305	9399	9568	9680
8237	8314	8373	8462	8522	8661	8975	9071	9211	9308	9400	9569	9683
8239	8315	8374	8463	8523	8665	9000	9072	9212	9310	9402	9573	9684
8243	8317	8375	8466	8524	8679	9002	9073	9216	9311	9404	9574	9686
8245	8318	8376	8471	8527	8694	9003	9075	9217	9312	9405	9575	9687
8247	8320	8377	8472	8530	8704	9004	9076	9218	9313	9406	9579	9689
8248	8321	8379	8473	8533	8710	9008	9077	9219	9314	9407	9588	9690
8249	8322	8380	8474	8535	8762	9009	9079	9220	9315	9411	9593	9691
8250	8323	8381	8475	8536	8777	9010	9080	9221	9317	9418	9595	9693
8251	8325	8382	8477	8537	8778	9014	9081	9222	9319	9423	9598	9694
8252	8326	8383	8480	8539	8781	9020	9083	9224	9320	9426	9611	9697
8253	8327	8387	8481	8544	8788	9022	9085	9226	9322	9432	9612	9700
8254	8329	8388	8482	8548	8791	9025	9088	9227	9324	9436	9613	9701
8255	8330	8389	8483	8549	8794	9028	9090	9229	9327	9442	9614	9702
8256	8334	8391	8484	8550	8798	9034	9092	9230	9337	9451	9615	9704
8257	8335	8393	8486	8556	8803	9036	9094	9231	9339	9452	9616	9705
8258	8336	8395	8487	8559	8805	9037	9095	9232	9341	9453	9617	9706
8259	8337	8399	8488	8562	8806	9038	9096	9233	9346	9456	9618	9708
8260	8338	8400	8489	8564	8807	9040	9097	9235	9348	9457	9620	9710
8261	8340	8406	8490	8566	8808	9042	9098	9238	9349	9458	9621	9714
8262	8343	8408	8491	8567	8810	9044	9099	9244	9351	9473	9622	9718
8267	8344	8409	8492	8568	8812	9045	9100	9245	9352	9474	9623	9720
8268	8345	8431	8493	8569	8814	9046	9101	9246	9353	9479	9624	9721
8269	8347	8433	8494	8570	8818	9047	9102	9257	9354	9491	9625	9723
8270	8350	8434	8495	8573	8821	9048	9103	9260	9358	9500	9626	9724
8271	8351	8435	8496	8574	8822	9049	9104	9261	9360	9507	9627	9725

Los Angeles County Public Works  
Sewer Maintenance Districts  
Tax Rate Area Report and Boundary Maps

9726	9794	9995	10051	10106	10149	10269	10401	10552	10754	10888	10959	11011
9727	9797	9997	10052	10107	10150	10274	10403	10555	10759	10889	10960	11012
9729	9798	10000	10053	10108	10152	10275	10415	10556	10760	10892	10961	11013
9731	9804	10003	10054	10109	10153	10285	10419	10557	10761	10893	10962	11014
9732	9826	10007	10055	10110	10154	10287	10421	10558	10762	10894	10963	11025
9734	9841	10008	10056	10111	10155	10293	10423	10562	10764	10896	10964	11026
9736	9842	10010	10058	10112	10156	10294	10424	10563	10769	10897	10965	11027
9738	9852	10011	10059	10113	10157	10295	10429	10564	10771	10898	10968	11030
9741	9853	10012	10060	10114	10158	10299	10430	10566	10782	10899	10969	11031
9744	9864	10014	10061	10115	10159	10301	10436	10568	10791	10900	10970	11032
9748	9865	10015	10064	10116	10160	10302	10440	10571	10792	10902	10971	11033
9749	9869	10016	10068	10117	10161	10305	10447	10577	10793	10904	10972	11035
9751	9872	10017	10069	10118	10162	10306	10448	10582	10794	10905	10973	11036
9752	9874	10018	10071	10119	10164	10315	10449	10590	10796	10908	10974	11037
9753	9877	10019	10074	10120	10165	10318	10455	10596	10797	10909	10975	11038
9754	9878	10021	10075	10121	10166	10325	10456	10601	10809	10910	10976	11039
9755	9880	10022	10076	10122	10167	10328	10459	10605	10810	10911	10978	11040
9756	9881	10023	10077	10123	10168	10333	10461	10615	10811	10912	10980	11042
9757	9882	10024	10078	10124	10171	10358	10462	10617	10812	10913	10981	11046
9759	9883	10025	10079	10125	10172	10362	10465	10618	10813	10914	10982	11048
9762	9887	10026	10080	10126	10173	10365	10469	10634	10814	10915	10983	11050
9763	9889	10027	10082	10127	10174	10366	10474	10640	10815	10918	10984	11054
9764	9890	10028	10083	10128	10175	10372	10476	10648	10816	10923	10985	11055
9766	9893	10029	10084	10129	10176	10373	10477	10652	10817	10924	10987	11060
9767	9894	10030	10085	10130	10177	10374	10480	10655	10818	10926	10988	11064
9769	9924	10032	10086	10131	10178	10376	10484	10656	10819	10927	10989	11065
9770	9928	10033	10087	10132	10179	10377	10495	10657	10820	10934	10990	11073
9771	9930	10034	10088	10133	10180	10378	10496	10673	10822	10936	10991	11079
9772	9931	10035	10089	10134	10181	10379	10498	10674	10823	10937	10993	11080
9773	9932	10036	10090	10135	10182	10382	10499	10697	10829	10939	10994	11083
9777	9933	10037	10091	10136	10183	10383	10522	10698	10830	10940	10995	11093
9778	9952	10039	10092	10137	10184	10385	10523	10705	10842	10941	10996	11095
9779	9953	10040	10093	10138	10186	10386	10526	10721	10843	10944	10998	11103
9780	9965	10041	10094	10139	10188	10387	10527	10724	10844	10947	10999	11104
9781	9975	10042	10095	10140	10190	10388	10535	10725	10856	10948	11000	11109
9782	9976	10043	10096	10141	10196	10389	10536	10727	10858	10949	11001	11113
9783	9981	10044	10097	10142	10199	10392	10541	10732	10861	10950	11002	11114
9784	9982	10045	10099	10143	10200	10393	10542	10733	10862	10951	11003	11115
9785	9984	10046	10100	10144	10204	10394	10543	10735	10880	10952	11004	11117
9786	9987	10047	10101	10145	10208	10395	10544	10738	10881	10955	11006	11119
9790	9989	10048	10103	10146	10215	10396	10545	10742	10882	10956	11007	11133
9792	9990	10049	10104	10147	10237	10399	10547	10743	10885	10957	11009	11151
9793	9994	10050	10105	10148	10266	10400	10549	10746	10887	10958	11010	11152

Los Angeles County Public Works  
Sewer Maintenance Districts  
Tax Rate Area Report and Boundary Maps

11157	11288	11474	11572	11690	11882	12002	12097	12294	12357	12432	12566	12715
11158	11289	11475	11573	11691	11884	12003	12121	12295	12358	12433	12567	12729
11159	11290	11476	11574	11698	11885	12004	12125	12296	12359	12434	12569	12756
11166	11317	11477	11575	11699	11886	12005	12131	12302	12368	12446	12594	12757
11167	11325	11478	11576	11702	11888	12006	12133	12303	12370	12454	12595	12769
11168	11341	11479	11577	11710	11889	12007	12137	12304	12371	12460	12596	12770
11172	11355	11480	11578	11711	11890	12012	12151	12307	12372	12462	12597	12771
11181	11356	11481	11580	11713	11894	12013	12152	12315	12373	12467	12602	12782
11185	11362	11496	11582	11714	11896	12014	12156	12316	12376	12468	12603	12783
11186	11364	11498	11583	11715	11897	12015	12159	12317	12377	12469	12605	12786
11187	11365	11499	11584	11716	11898	12018	12160	12318	12381	12470	12608	12787
11200	11370	11500	11585	11717	11899	12020	12169	12319	12386	12477	12610	12794
11213	11372	11501	11587	11727	11901	12021	12177	12320	12388	12479	12614	12805
11216	11374	11505	11589	11728	11915	12022	12178	12321	12392	12483	12617	12807
11217	11379	11508	11590	11733	11919	12023	12180	12322	12394	12486	12618	12809
11235	11380	11512	11591	11738	11920	12026	12182	12323	12395	12487	12622	12810
11237	11391	11520	11594	11740	11935	12032	12183	12325	12396	12496	12623	12813
11238	11410	11522	11596	11742	11936	12033	12184	12326	12399	12497	12624	12814
11239	11411	11523	11597	11745	11937	12034	12185	12327	12400	12498	12625	12815
11240	11412	11525	11598	11769	11939	12035	12187	12332	12401	12499	12627	12816
11241	11413	11526	11599	11776	11940	12042	12188	12333	12402	12501	12628	12817
11242	11414	11533	11600	11779	11945	12043	12189	12334	12403	12502	12629	12818
11243	11420	11534	11601	11795	11947	12045	12195	12335	12404	12503	12630	12828
11244	11421	11535	11602	11830	11950	12056	12196	12336	12405	12514	12631	12830
11245	11429	11536	11603	11831	11951	12057	12204	12337	12408	12515	12632	12831
11246	11436	11538	11614	11833	11952	12058	12205	12338	12410	12517	12634	12837
11256	11448	11539	11615	11834	11953	12059	12258	12339	12411	12523	12635	12838
11259	11453	11540	11617	11835	11954	12060	12259	12341	12412	12526	12643	12843
11260	11454	11544	11618	11836	11955	12064	12260	12342	12413	12527	12644	12849
11261	11455	11545	11620	11843	11958	12066	12265	12343	12414	12528	12645	12855
11262	11457	11546	11628	11851	11960	12070	12266	12344	12415	12529	12651	12857
11263	11458	11547	11629	11853	11963	12071	12267	12345	12416	12536	12655	12859
11266	11459	11548	11631	11854	11971	12074	12268	12346	12417	12537	12656	12861
11272	11460	11549	11633	11855	11973	12076	12269	12347	12419	12538	12657	12862
11274	11462	11550	11634	11856	11980	12080	12270	12348	12420	12539	12676	12865
11276	11466	11551	11635	11858	11981	12081	12275	12349	12421	12540	12686	12866
11277	11467	11554	11650	11859	11982	12082	12279	12350	12422	12543	12687	12884
11278	11468	11559	11651	11873	11983	12084	12280	12351	12423	12544	12688	12886
11280	11469	11562	11654	11874	11984	12085	12282	12352	12424	12546	12695	12887
11281	11470	11563	11655	11877	11995	12087	12284	12353	12425	12551	12707	12888
11283	11471	11564	11670	11878	11999	12088	12286	12354	12428	12552	12708	12908
11284	11472	11567	11675	11879	12000	12089	12290	12355	12429	12555	12709	12916
11285	11473	11568	11681	11880	12001	12093	12292	12356	12431	12557	12711	12917

Los Angeles County Public Works  
Sewer Maintenance Districts  
Tax Rate Area Report and Boundary Maps

12918	12999	13085	13277	13387	13475	13614	13709	13798	13884	14121	14204	14315
12919	13000	13086	13282	13388	13476	13617	13710	13799	13885	14122	14206	14316
12920	13002	13087	13283	13390	13478	13627	13711	13800	13886	14124	14207	14317
12921	13010	13090	13284	13391	13479	13629	13714	13802	13889	14126	14208	14319
12922	13013	13097	13285	13392	13480	13632	13715	13810	13890	14127	14209	14321
12928	13014	13099	13286	13393	13485	13642	13719	13811	13891	14128	14211	14322
12929	13017	13103	13287	13394	13491	13643	13720	13816	13892	14129	14212	14323
12931	13018	13106	13290	13395	13499	13644	13722	13818	13896	14131	14213	14324
12934	13019	13109	13291	13396	13500	13645	13723	13822	13897	14132	14214	14328
12935	13020	13110	13292	13397	13503	13646	13724	13825	13904	14133	14216	14331
12936	13021	13111	13293	13398	13507	13647	13725	13826	13934	14141	14220	14332
12937	13023	13112	13294	13402	13513	13648	13726	13827	13940	14147	14229	14339
12947	13025	13114	13295	13403	13516	13649	13727	13829	13945	14148	14230	14343
12949	13026	13115	13296	13404	13530	13650	13728	13832	13948	14150	14231	14344
12950	13027	13116	13297	13405	13531	13651	13729	13833	13950	14152	14245	14345
12951	13028	13117	13299	13406	13533	13652	13730	13834	13951	14157	14246	14348
12953	13029	13119	13300	13407	13534	13653	13731	13837	13952	14159	14247	14349
12954	13033	13129	13314	13408	13536	13654	13732	13838	13954	14160	14248	14350
12956	13035	13145	13315	13409	13537	13656	13735	13840	13955	14161	14249	14351
12957	13037	13146	13316	13410	13547	13659	13736	13843	13956	14162	14250	14352
12958	13038	13147	13318	13411	13552	13660	13737	13846	13967	14163	14252	14353
12959	13039	13149	13320	13412	13556	13661	13738	13847	13968	14164	14253	14354
12960	13040	13150	13322	13413	13557	13662	13739	13848	13969	14168	14254	14356
12961	13042	13151	13323	13414	13558	13663	13740	13849	13971	14169	14255	14357
12962	13043	13155	13324	13415	13561	13664	13741	13850	13972	14170	14256	14358
12963	13044	13164	13325	13419	13562	13665	13747	13851	13973	14173	14257	14359
12965	13050	13167	13326	13421	13563	13666	13751	13852	13974	14174	14258	14360
12967	13052	13173	13331	13422	13565	13667	13757	13853	13978	14175	14259	14362
12968	13055	13175	13332	13429	13566	13668	13758	13855	13979	14187	14260	14363
12970	13056	13177	13333	13434	13567	13669	13760	13856	13985	14188	14263	14364
12971	13057	13186	13336	13435	13569	13670	13768	13866	13989	14190	14264	14365
12972	13058	13187	13337	13436	13570	13673	13769	13867	14043	14191	14265	14366
12974	13059	13189	13340	13437	13571	13674	13770	13868	14044	14192	14266	14370
12977	13061	13201	13342	13442	13572	13675	13772	13869	14045	14193	14267	14384
12978	13071	13204	13354	13443	13573	13676	13773	13870	14048	14194	14268	14387
12979	13072	13208	13355	13444	13574	13677	13775	13871	14049	14195	14271	14388
12982	13073	13214	13356	13448	13575	13679	13777	13872	14050	14196	14280	14393
12983	13074	13215	13357	13449	13576	13680	13779	13873	14054	14197	14281	14403
12987	13075	13216	13358	13450	13601	13681	13780	13876	14060	14198	14286	14404
12988	13078	13217	13359	13455	13603	13684	13781	13878	14061	14200	14289	14408
12989	13081	13227	13360	13456	13604	13689	13785	13879	14073	14201	14290	14416
12990	13083	13271	13373	13457	13611	13690	13786	13880	14076	14202	14291	14418
12993	13084	13276	13386	13474	13612	13708	13787	13881	14103	14203	14309	14421

Los Angeles County Public Works  
Sewer Maintenance Districts  
Tax Rate Area Report and Boundary Maps

14422	14571	14691	14770	14838	14952	15015	15114	15183	15290	15368	15466	15594
14423	14574	14692	14771	14839	14953	15019	15115	15195	15291	15369	15467	15596
14427	14579	14704	14773	14840	14955	15026	15116	15196	15292	15370	15468	15597
14429	14581	14706	14774	14841	14960	15030	15124	15199	15293	15374	15469	15598
14434	14582	14712	14775	14842	14963	15037	15138	15200	15294	15377	15470	15599
14437	14584	14713	14776	14843	14964	15042	15139	15201	15295	15380	15471	15601
14438	14589	14714	14777	14844	14965	15043	15140	15202	15296	15382	15474	15602
14445	14591	14715	14778	14846	14967	15044	15141	15203	15297	15383	15477	15603
14449	14592	14716	14780	14848	14968	15045	15142	15204	15300	15386	15483	15606
14450	14593	14717	14781	14849	14969	15046	15143	15207	15301	15387	15484	15608
14452	14594	14721	14782	14853	14970	15047	15144	15209	15302	15388	15485	15609
14453	14596	14722	14783	14855	14971	15048	15145	15212	15303	15390	15487	15610
14457	14597	14723	14785	14856	14972	15049	15146	15226	15304	15391	15488	15611
14458	14598	14724	14786	14857	14973	15050	15147	15235	15306	15394	15489	15615
14461	14599	14725	14787	14858	14974	15051	15148	15241	15307	15395	15490	15617
14476	14600	14726	14788	14859	14975	15052	15149	15242	15311	15408	15491	15619
14479	14601	14727	14790	14860	14976	15058	15150	15244	15312	15409	15494	15620
14485	14602	14729	14791	14861	14977	15065	15151	15248	15313	15419	15497	15621
14490	14603	14730	14795	14864	14978	15066	15152	15250	15314	15420	15498	15622
14491	14604	14740	14801	14870	14979	15067	15153	15251	15315	15422	15499	15623
14492	14612	14746	14802	14871	14980	15069	15154	15252	15316	15423	15501	15624
14493	14618	14747	14803	14872	14981	15072	15155	15253	15318	15433	15503	15625
14494	14620	14748	14804	14873	14982	15073	15156	15254	15319	15434	15510	15626
14498	14621	14749	14805	14874	14983	15074	15157	15255	15320	15439	15512	15627
14499	14622	14751	14806	14878	14984	15077	15158	15256	15321	15445	15513	15628
14500	14626	14752	14807	14879	14985	15084	15159	15257	15331	15446	15519	15629
14501	14627	14753	14808	14880	14986	15085	15160	15258	15336	15449	15520	15630
14502	14628	14754	14811	14893	14988	15086	15161	15259	15340	15450	15521	15631
14503	14629	14755	14814	14898	14989	15087	15162	15260	15342	15451	15523	15632
14505	14635	14756	14815	14899	14990	15088	15163	15261	15343	15452	15528	15633
14511	14636	14757	14816	14903	14991	15089	15166	15262	15344	15453	15531	15634
14513	14637	14758	14817	14905	14992	15090	15167	15263	15353	15454	15532	15635
14514	14638	14759	14818	14909	14993	15091	15168	15264	15354	15455	15533	15636
14515	14639	14760	14823	14910	14994	15097	15169	15265	15356	15456	15546	15637
14516	14647	14761	14824	14921	14995	15098	15170	15266	15357	15457	15547	15644
14519	14661	14762	14825	14931	14996	15099	15171	15277	15358	15458	15552	15647
14520	14670	14763	14826	14932	14997	15100	15172	15278	15359	15459	15555	15648
14535	14671	14764	14827	14933	14998	15104	15173	15279	15360	15460	15558	15649
14547	14674	14765	14830	14935	14999	15105	15174	15280	15361	15461	15561	15656
14556	14679	14766	14831	14939	15000	15110	15175	15282	15363	15462	15568	15657
14561	14681	14767	14832	14940	15001	15111	15179	15284	15364	15463	15569	15662
14565	14687	14768	14834	14949	15002	15112	15181	15286	15365	15464	15570	15663
14569	14690	14769	14837	14951	15010	15113	15182	15287	15367	15465	15573	15664

Los Angeles County Public Works  
Sewer Maintenance Districts  
Tax Rate Area Report and Boundary Maps

15665	15711	15767	15915	16085	16166	16247	16377	16480	16550	16632	16746	16874
15666	15713	15768	15918	16086	16168	16249	16387	16481	16559	16633	16747	16875
15667	15714	15769	15927	16088	16170	16250	16394	16482	16563	16634	16748	16876
15668	15715	15770	15932	16091	16176	16251	16400	16483	16564	16635	16749	16877
15669	15716	15771	15933	16095	16177	16252	16401	16485	16565	16636	16750	16878
15670	15717	15772	15935	16097	16182	16253	16402	16486	16571	16638	16751	16879
15671	15718	15776	15937	16098	16185	16255	16403	16487	16575	16639	16752	16880
15672	15719	15778	15938	16101	16191	16259	16404	16488	16577	16640	16753	16881
15673	15720	15779	15941	16102	16193	16262	16407	16489	16579	16641	16755	16882
15675	15721	15780	15944	16103	16197	16263	16408	16490	16580	16642	16756	16883
15676	15723	15781	15953	16104	16207	16268	16409	16491	16581	16643	16757	16884
15677	15724	15782	15954	16105	16209	16284	16411	16492	16583	16645	16758	16885
15678	15725	15783	15957	16106	16212	16286	16413	16493	16586	16647	16762	16886
15679	15727	15794	15959	16107	16213	16291	16430	16494	16590	16648	16763	16888
15680	15728	15796	15962	16108	16214	16296	16432	16495	16592	16650	16764	16889
15681	15731	15798	15971	16109	16215	16306	16436	16496	16594	16651	16765	16891
15683	15732	15799	15972	16111	16216	16315	16437	16497	16595	16652	16782	16892
15684	15734	15803	15974	16112	16217	16319	16438	16498	16597	16658	16802	16893
15685	15735	15804	15990	16113	16218	16320	16439	16499	16598	16659	16806	16894
15686	15736	15814	15993	16114	16220	16321	16440	16500	16599	16672	16812	16895
15687	15737	15815	15998	16115	16221	16322	16442	16504	16603	16674	16813	16896
15688	15741	15816	15999	16116	16222	16325	16443	16505	16604	16676	16816	16897
15689	15742	15817	16000	16117	16223	16326	16444	16506	16605	16677	16821	16898
15690	15743	15818	16009	16125	16224	16327	16445	16508	16607	16678	16824	16899
15691	15744	15831	16038	16126	16226	16330	16459	16509	16608	16690	16825	16900
15692	15745	15832	16047	16128	16227	16333	16461	16511	16609	16707	16826	16901
15693	15746	15833	16060	16131	16228	16338	16462	16512	16611	16713	16827	16903
15694	15747	15834	16069	16133	16229	16342	16463	16513	16612	16714	16828	16904
15695	15748	15835	16070	16134	16230	16343	16464	16514	16613	16716	16829	16905
15696	15749	15836	16071	16136	16231	16344	16465	16515	16617	16718	16830	16906
15697	15750	15837	16072	16137	16232	16345	16466	16516	16618	16720	16831	16907
15698	15751	15838	16073	16139	16233	16346	16468	16519	16619	16723	16848	16909
15699	15752	15842	16074	16140	16234	16347	16469	16528	16620	16728	16850	16911
15700	15754	15848	16075	16142	16235	16348	16470	16531	16621	16736	16854	16912
15701	15755	15858	16076	16144	16238	16349	16471	16532	16622	16737	16858	16913
15702	15756	15863	16077	16148	16239	16350	16472	16534	16623	16738	16860	16915
15703	15757	15868	16078	16149	16240	16351	16473	16535	16624	16739	16861	16919
15704	15758	15873	16079	16150	16241	16353	16474	16539	16625	16740	16865	16921
15706	15759	15878	16080	16154	16242	16354	16475	16540	16626	16741	16868	16922
15707	15760	15907	16081	16158	16243	16356	16476	16541	16627	16742	16869	16923
15708	15761	15908	16082	16160	16244	16360	16477	16543	16628	16743	16871	16925
15709	15765	15909	16083	16162	16245	16369	16478	16547	16630	16744	16872	16926
15710	15766	15913	16084	16163	16246	16372	16479	16549	16631	16745	16873	16928

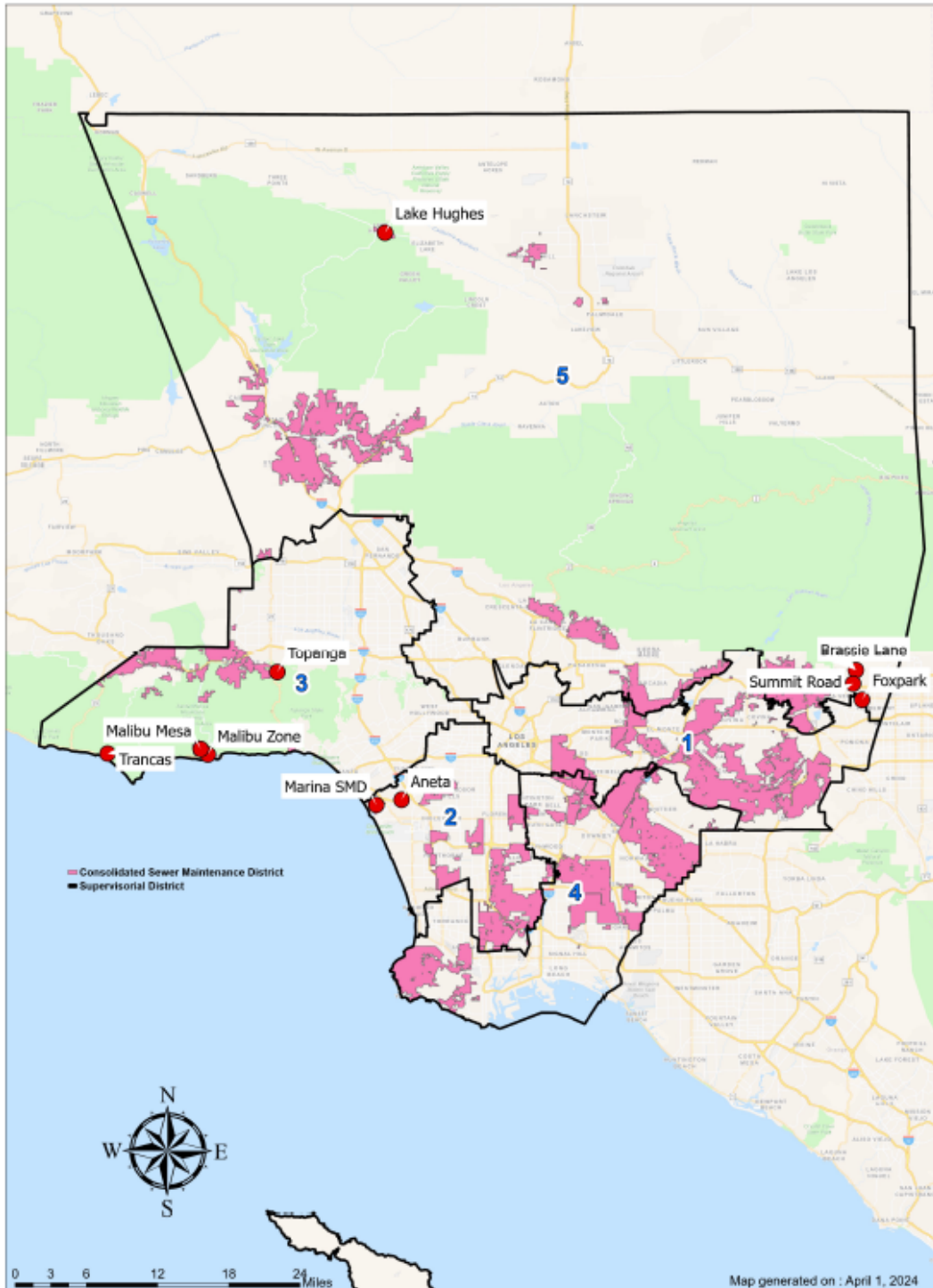


Los Angeles County Public Works  
Sewer Maintenance Districts  
Tax Rate Area Report and Boundary Maps

16930	16961	16983	17012	17074	17174	17207	17236	17263	17291	17319	1482	6119
16942	16962	16984	17013	17113	17175	17208	17237	17264	17292	17321	11151	12614
16943	16963	16985	17014	17117	17176	17209	17238	17265	17298	TRANCAS ZONE	MALIBU MESA ZONE	12627 LAKE HUGHES ZONE
16944	16964	16986	17017	17118	17177	17210	17239	17266	17299	10856	8625	
16945	16965	16987	17021	17137	17181	17211	17242	17267	17300	11003	8642	1858
16946	16966	16989	17023	17138	17182	17212	17243	17268	17301	11004	8651	1859
16947	16967	16990	17025	17139	17183	17213	17244	17269	17302	16919	10858	1861
16948	16968	16993	17026	17141	17184	17214	17247	17270	17303	TOPANGA ZONE	11046	BRASSIE LANE ZONE
16949	16969	16994	17027	17142	17185	17215	17249	17271	17304	1438	11048	
16950	16970	16995	17028	17143	17190	17216	17251	17272	17305	1516	11050	1436
16951	16971	16996	17030	17146	17191	17217	17253	17273	17307	10419	FOX PARK ZONE	1437
16952	16974	16997	17031	17147	17192	17218	17254	17274	17308	MALIBU ZONE	2798	MARINA SMD
16953	16975	16998	17032	17155	17193	17220	17255	17275	17309	10861	16714	369
16954	16976	16999	17033	17158	17194	17222	17256	17279	17310	10862	SUMMIT ROAD ZONE	1460
16955	16977	17000	17035	17160	17198	17223	17257	17282	17313	ANETA ZONE	1163	2929
16956	16978	17001	17036	17161	17203	17224	17258	17283	17314	1163	2929	1608
16958	16979	17002	17037	17167	17204	17225	17259	17286	17316	1473	5123	
16959	16980	17010	17041	17170	17205	17234	17260	17287	17317			
16960	16982	17011	17042	17173	17206	17235	17261	17288	17318			



### Los Angeles County Public Works Consolidated Sewer Maintenance District and Special Service Zones





**Los Angeles County Public Works**  
**Aneta Zone**  
**Supervisorial District 2**

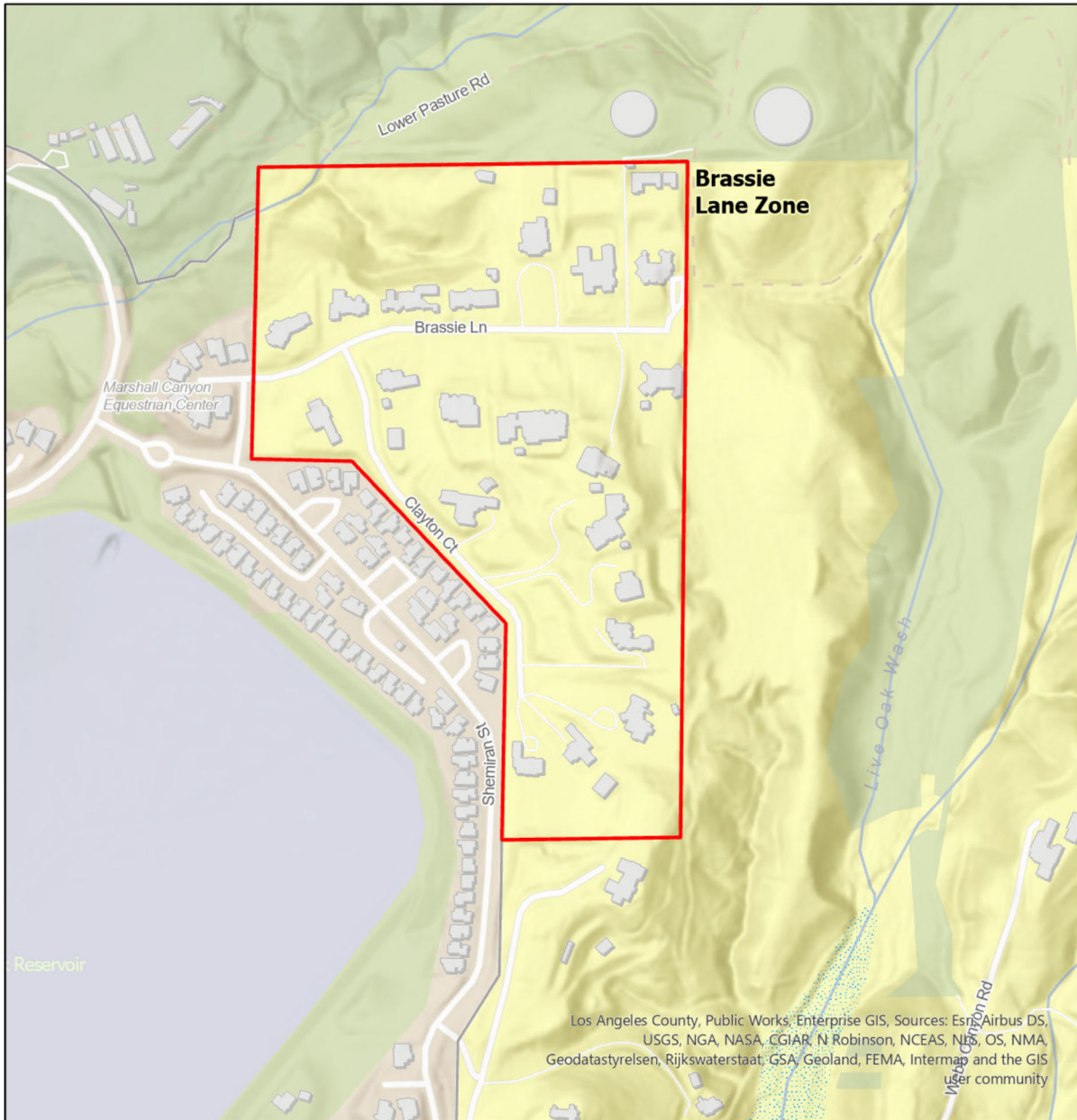


Los Angeles County, Public Works, Enterprise GIS, Sources: Esri, Airbus DS, USGS, NGA, NASA, CGIAR, N-Robinson, NCEAS, NLS, OS, NMA, Geodastyrrelsen, Rijkswaterstaat, GSA, Geoland, FEMA, Intermap and the GIS user community

	<b>ANETA ZONE</b>	
	<b># of Assessor Parcel</b>	<b>Sewage Units</b>
	<b>103</b>	<b>328</b>



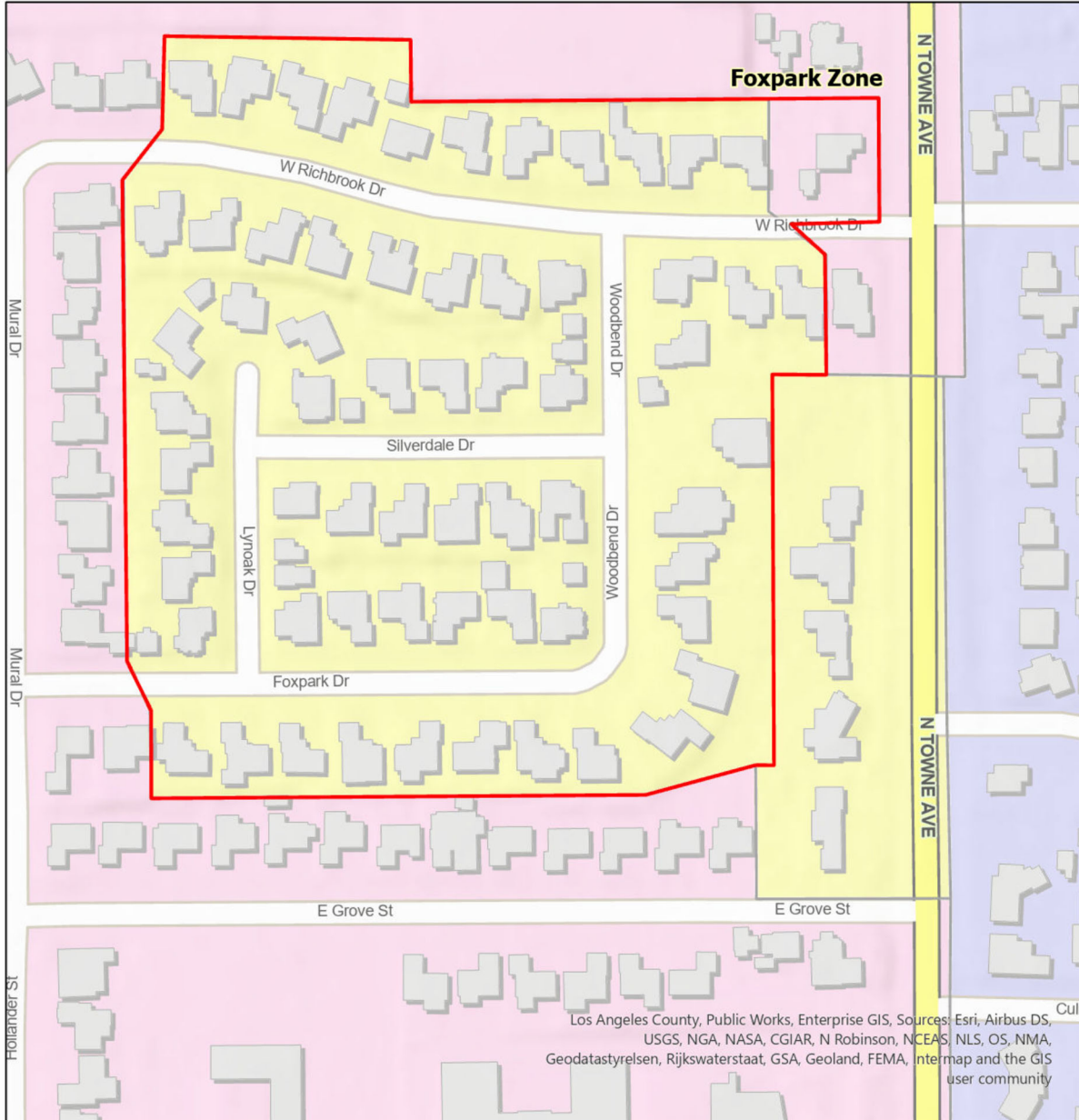
**Los Angeles County Public Works  
Brassie Lane Zone  
Supervisorial District 5**



	<b>BRASSIE LANE ZONE</b>	
	<b># of Assessor Parcel</b>	<b>Sewage Units</b>
	<b>20</b>	<b>20</b>



Los Angeles County Public Works  
Foxpark Zone  
Supervisorial District 1

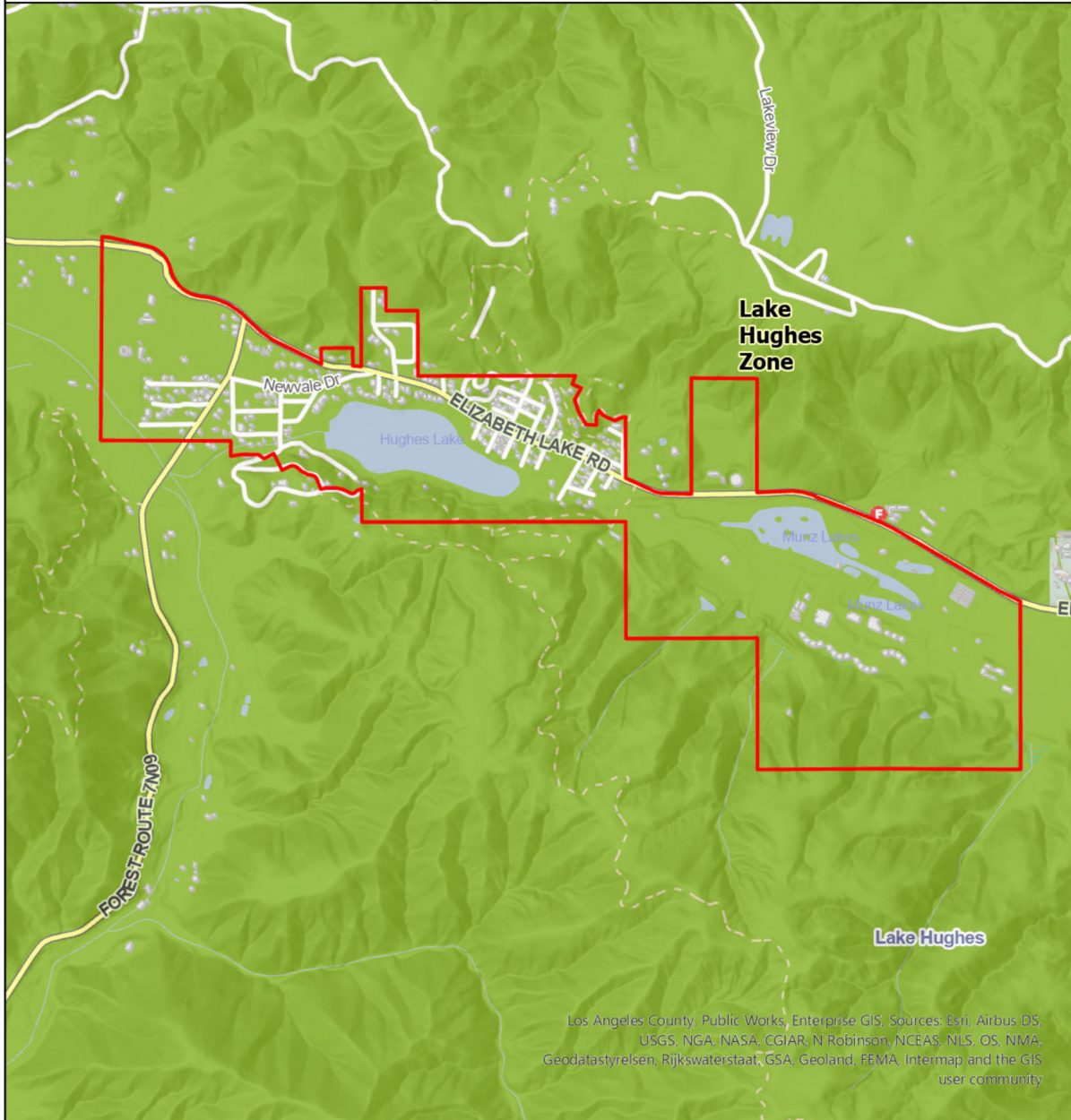


0 125 250 500 Feet

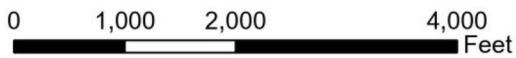
FOXPAK ZONE	
# of Assessor Parcel	Sewage Units
61	61



# Los Angeles County Public Works Lake Hughes Zone Supervisorial District 5



Los Angeles County, Public Works, Enterprise GIS. Sources: Esri, Airbus DS, USGS, NGA, NASA, CGIAR, N Robinson, NCEAS, NLS, OS, NMA, Geodatastyrelsen, Rijkswaterstaat, GSA, Geoland, FEMA, Intermap and the GIS user community



LAKE HUGHES ZONE	
# of Assessor Parcel	Sewage Units
211	282



**Los Angeles County Public Works  
Malibu Zone  
Supervisorial District 3**



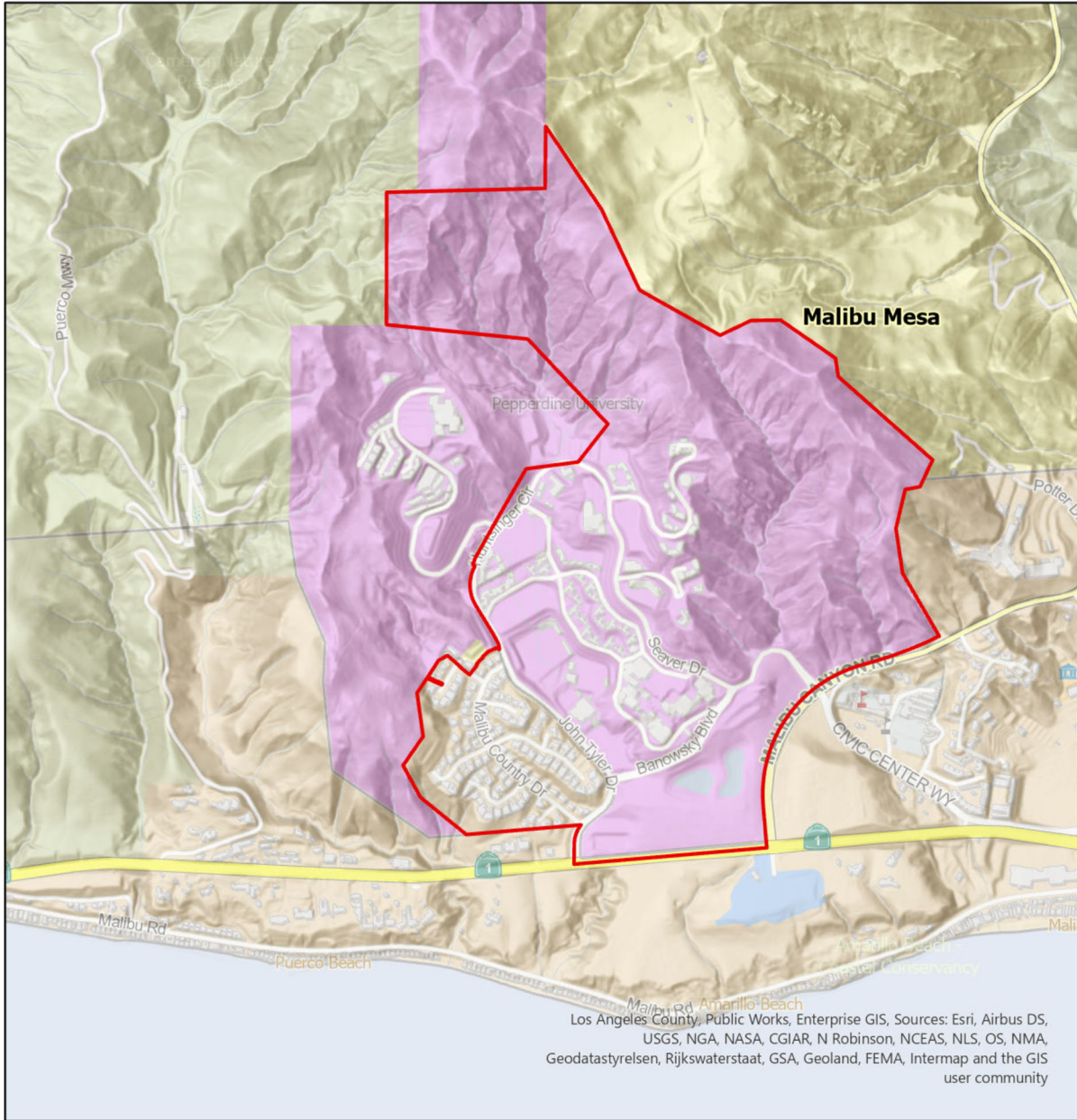
Los Angeles County, Public Works, Enterprise GIS, Sources: Esri, Airbus DS, USGS, NGA, NASA, CGIAR, N Robinson, NCEAS, NLS, OS, NMA, Geodastyrelsen, Rijkswaterstaat, GSA, Geoland, FEMA, Intermap and the GIS user community



<b>MALIBU ZONE</b>	
<b># of Assessor Parcel</b>	<b>Sewage Units</b>
<b>191</b>	<b>191</b>



**Los Angeles County Public Works  
Malibu Mesa Zone  
Supervisorial District 3**



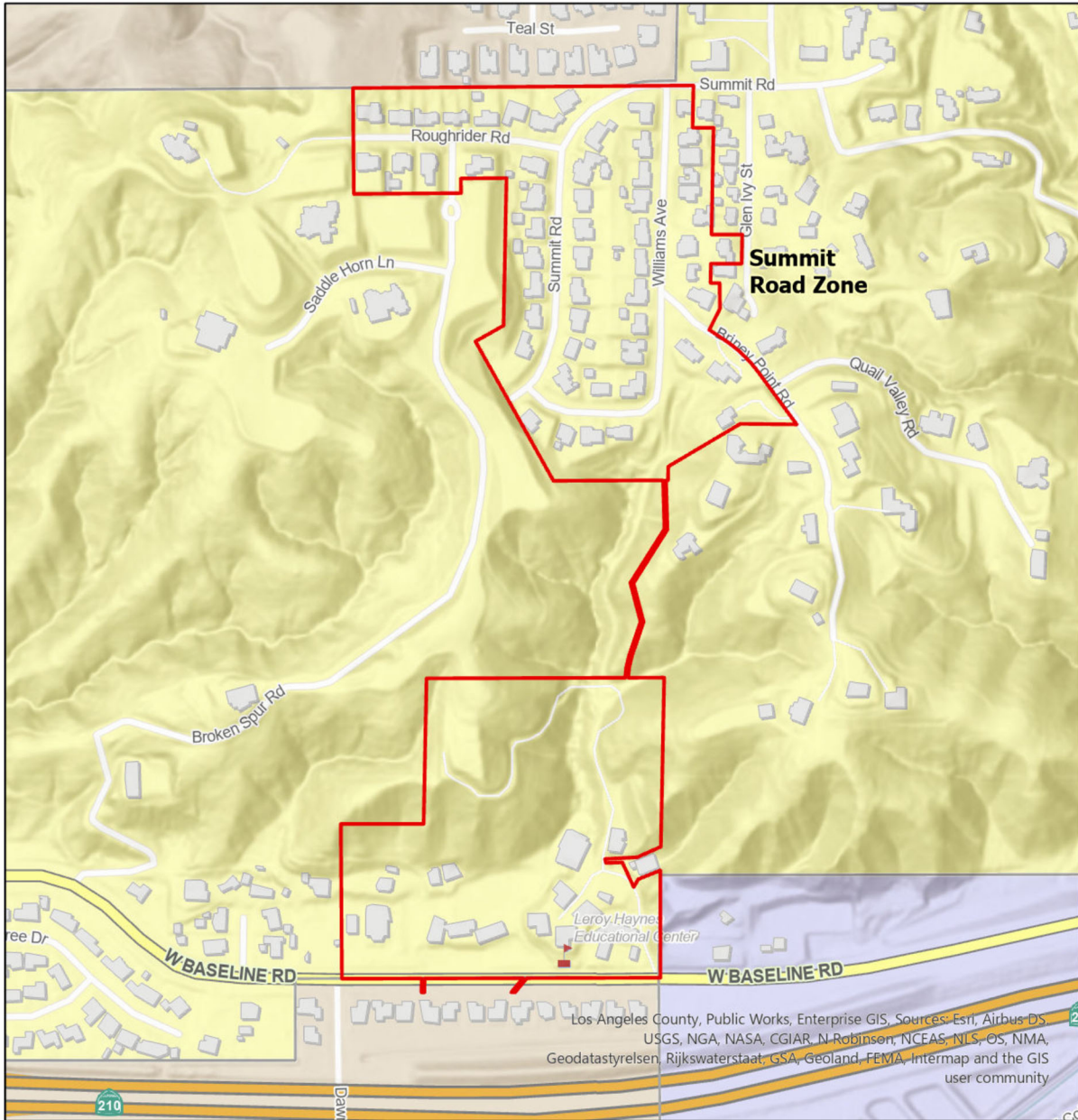
Los Angeles County, Public Works, Enterprise GIS, Sources: Esri, Airbus DS, USGS, NGA, NASA, CGIAR, N Robinson, NCEAS, NLS, OS, NMA, Geodastyrelsen, Rijkswaterstaat, GSA, Geoland, FEMA, Intermap and the GIS user community

			<b>MALIBU MESA ZONE</b>	
			<b># of Assessor Parcel</b>	<b>Sewage Units</b>
			<b>187</b>	<b>989</b>





**Los Angeles County Public Works  
Summit Road Zone  
Supervisorial District 5**

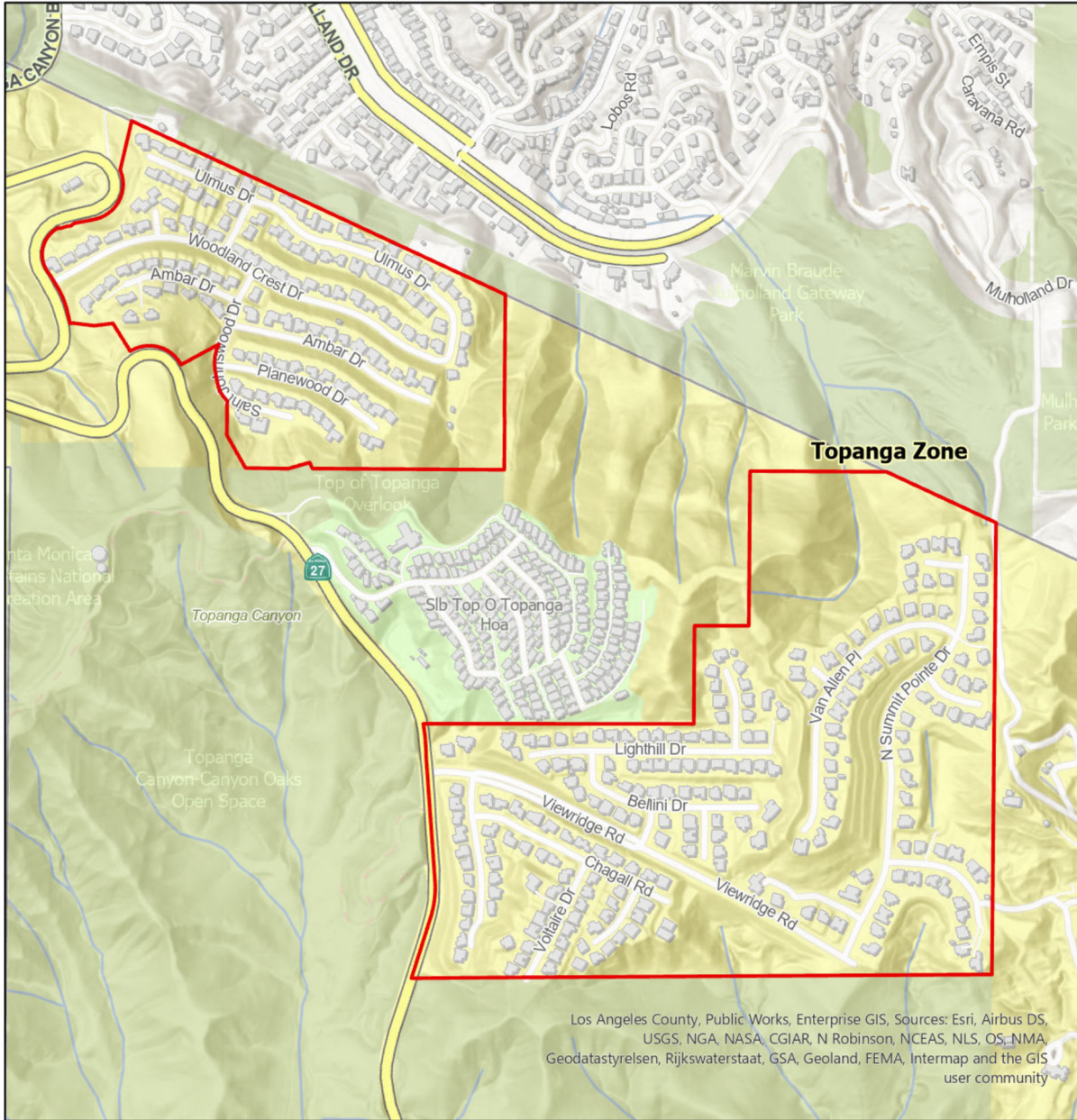


Los Angeles County, Public Works, Enterprise GIS. Sources: Esri, Airbus DS, USGS, NGA, NASA, CGIAR, N. Robinson, NCEAS, NLS, OS, NMA, Geodatastyrelsen, Rijkswaterstaat, GSA, Geoland, FEMA, Intermap and the GIS user community

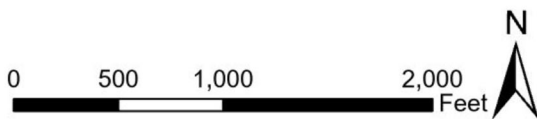
<b>SUMMIT ROAD ZONE</b>			
<b># of Assessor Parcel</b>		<b>Sewage Units</b>	
<b>59</b>		<b>63</b>	



**Los Angeles County Public Works  
Topanga Zone  
Supervisorial District 3**



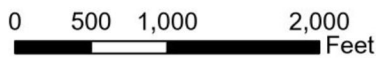
Los Angeles County, Public Works, Enterprise GIS, Sources: Esri, Airbus DS, USGS, NGA, NASA, CGIAR, N Robinson, NCEAS, NLS, OS, NMA, Geodastyrelsen, Rijkswaterstaat, GSA, Geoland, FEMA, Intermap and the GIS user community



TOPANGA ZONE	
# of Assessor Parcel	Sewage Units
355	355



### Los Angeles County Public Works Trancas Zone Supervisorial District 3



TRANCAS ZONE	
# of Assessor Parcel	Sewage Units
271	271



# Los Angeles County Public Works Marina Sewer Maintenance District Supervisorial District 2

