

Los Angeles County Board of Supervisors

April 5, 2022

Set Item 2. Public Health Order

Barbara Ferrer, PhD, MPH, MEd

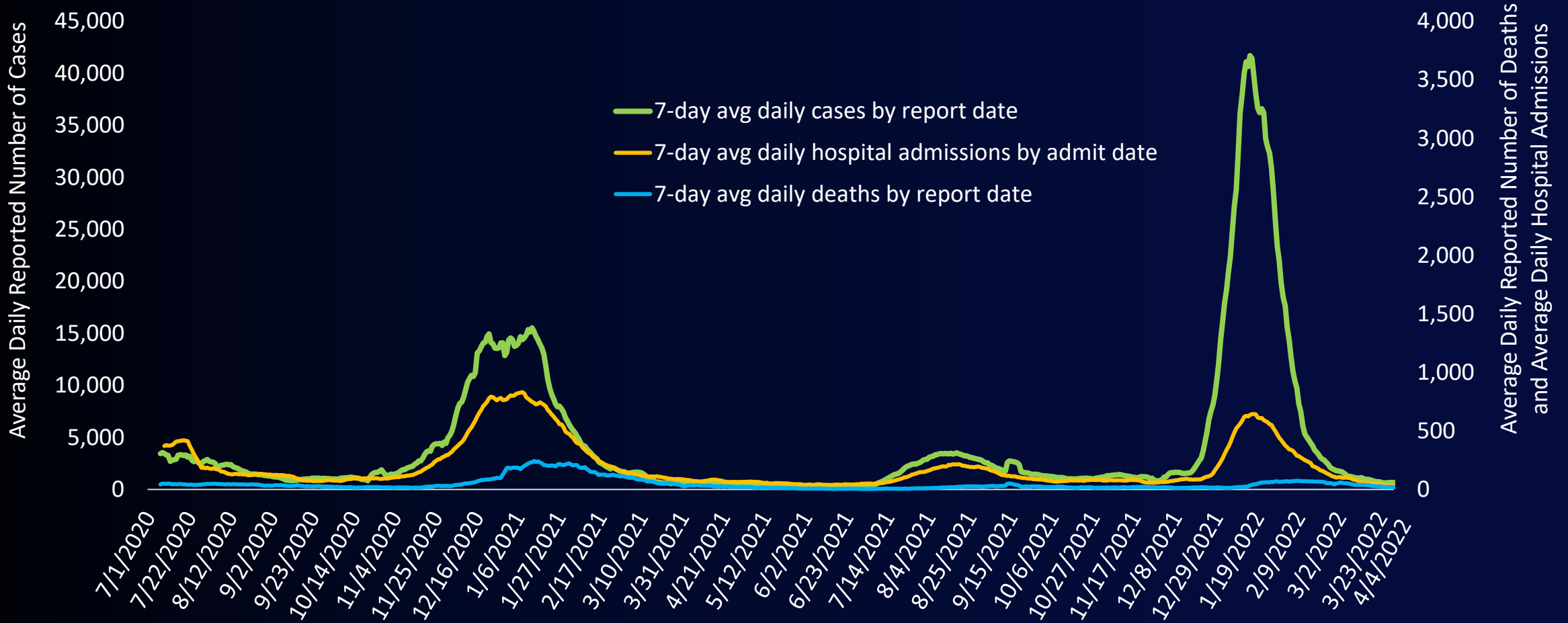
Director, Department of Public Health



[covid19.lacounty.gov](https://covid19.lacounty.gov)

4/5/2022

# 7-Day Average Daily COVID-19 Cases and Deaths by Report Date\* and Daily Hospital Admissions by Admit Date July 1, 2020 – April 4, 2022



# CDC COVID-19 Community Levels

New Cases (per 100,000 people in last 7 days)	Indicators	Low	Medium	High	LA County Current Values <u>New Cases:</u> 56/100,000 (as of 3/31/22)
Fewer than 200	New COVID-19 admissions per 100,000 population (7-day total)	<10.0	10.0-19.9	≥20.0	2.4
	Proportion of staffed inpatient beds occupied by COVID-19 patients (7-day average)	<10.0%	10.0-14.9%	≥15.0%	2.0%
200 or more	New COVID-19 admissions per 100,000 population (7-day total)	NA	<10.0	≥10.0	N/A
	Proportion of staffed inpatient beds occupied by COVID-19 patients (7-day average)	NA	<10.0%	≥10.0%	N/A

The COVID-19 community level is determined by the higher of the inpatient beds and new admissions indicators, based on the current level of new cases per 100,000 population in the past 7 days.

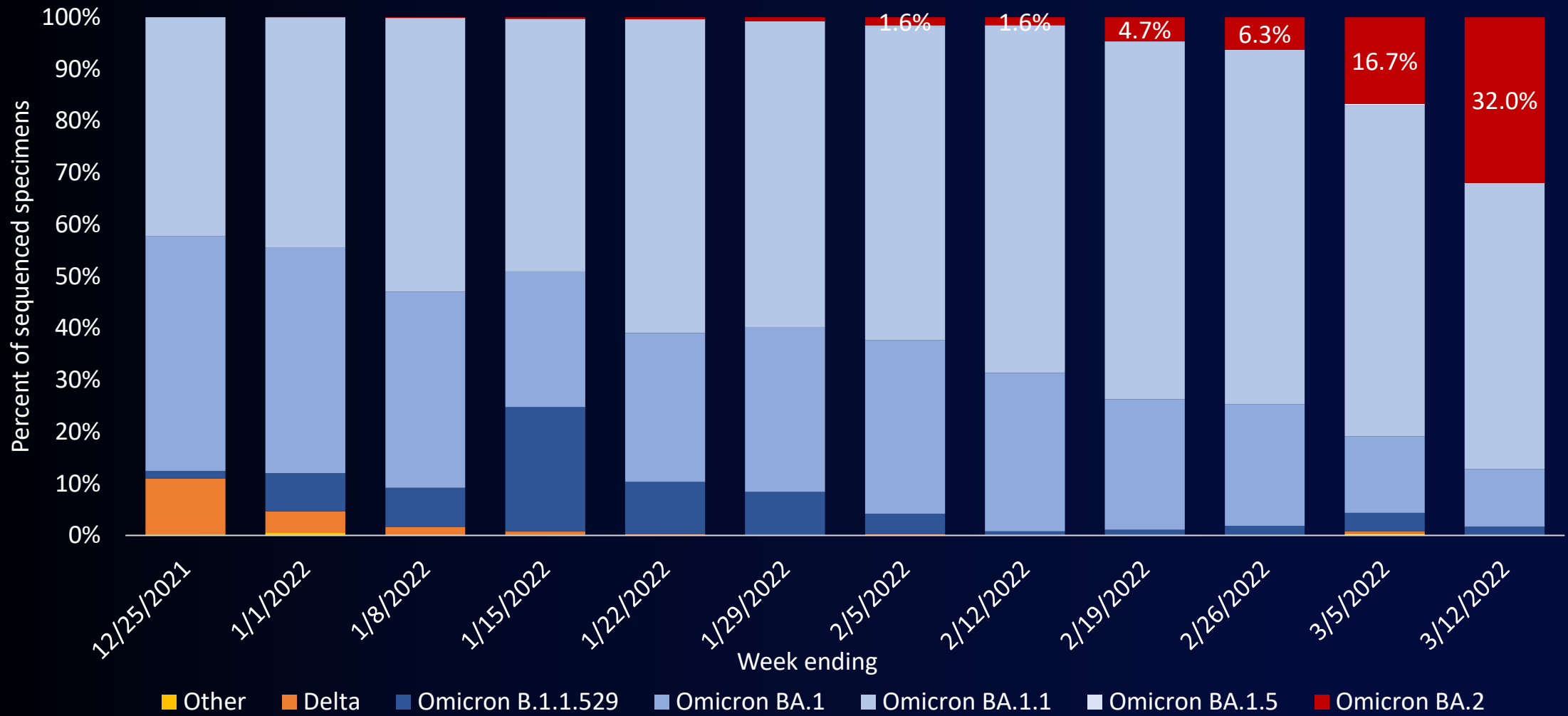


# LA County Early Alert Signals

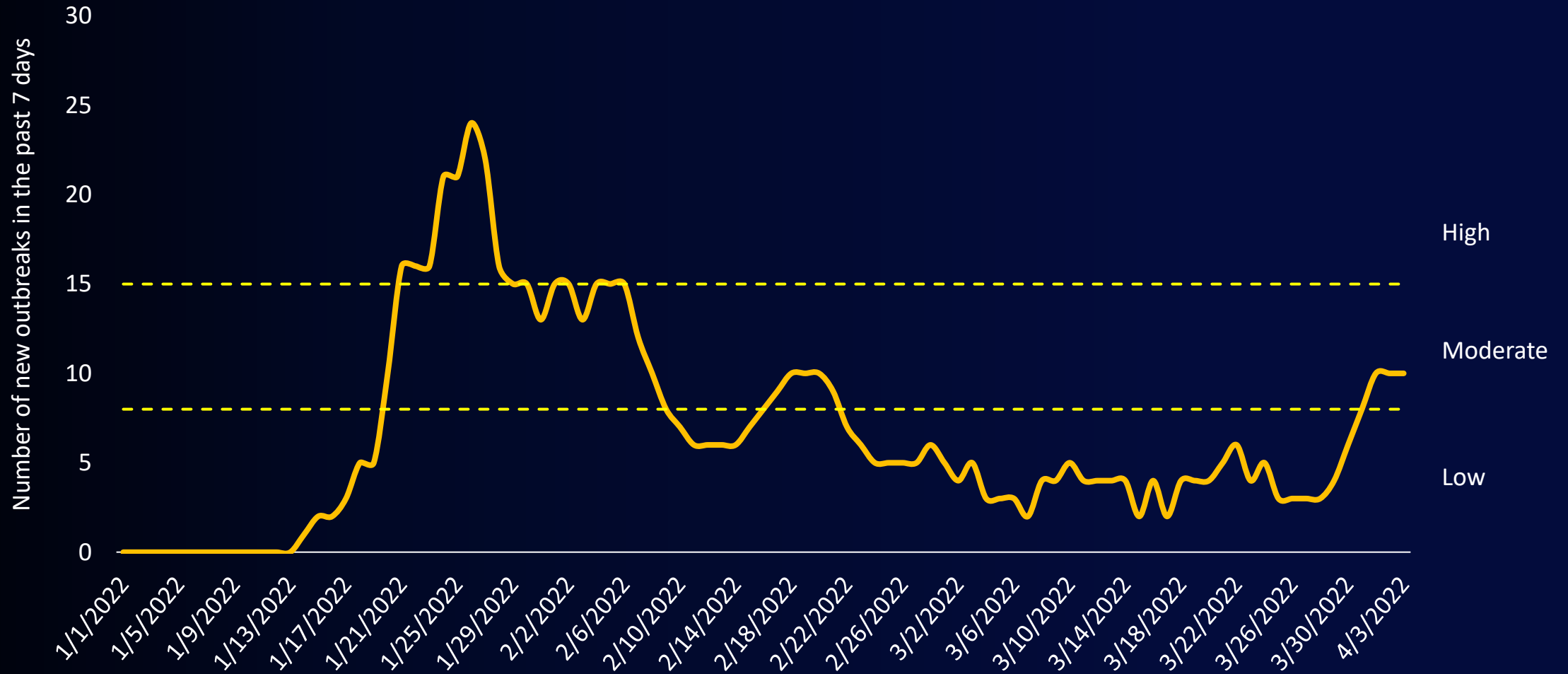
Indicator	Thresholds			LA County Current Values
	Low Concern	Moderate Concern	High Concern	
Percent of specimens sequenced that are identified as a new variant of concern (including subvariants) <i>(based on WHO designation)</i> <sup>1</sup>	< 10%	10%-20%	> 20%	<b>32%</b>
7-day average percent of Emergency Department encounters classified as coronavirus-related <sup>2</sup>	< 5%	5%-10%	> 10%	<b>2.7%</b>
7-day cumulative crude case rate for the lowest income areas (30-100% area poverty) <sup>3</sup>	< 100 per 100,000	100-200 per 100,000	> 200 per 100,000	<b>39 per 100,000</b>
Number of new outbreaks in skilled nursing facilities in past 7 days <sup>4</sup>	≤10	11-20	>20	<b>4</b>
Number of new outbreaks in TK-12 school classrooms in past 7 days <sup>4</sup>	≤ 7	8-14	≥ 15	<b>10</b>
Number of new outbreaks in PEH settings in past 7 days <sup>4</sup>	≤ 10	11-20	>20	<b>1</b>
Number of worksite cluster reports in past 7 days <sup>5</sup>	< 100	100-300	> 300	<b>25</b>



# Delta and Omicron Variants as a Percentage of All Specimens Sequenced for Baseline Variant Surveillance



# New Outbreaks in TK-12 School Classrooms\* in the Past 7 Days January 1, 2022 – April 3, 2022



[covid19.lacounty.gov](https://covid19.lacounty.gov)

4/5/2022

\*Other school-associated outbreaks that are outside of the classroom setting (e.g., youth sports, extracurricular activities, staff only) are excluded

# LAC Post-Surge Preparedness Dashboard

Indicator	Thresholds			LA County Current Value
	Needs Improvement	Adequate	Outstanding	
<b>Access to vaccines:</b> Number of mobile vaccination sites per week	< 200	200-300	> 300	701 <sup>1</sup>
<b>Access to vaccines:</b> Number of fixed vaccination sites	< 900	900-1,100	> 1,100	1,071 <sup>2</sup>
<b>Access to vaccines:</b> Percentage of eligible homebound residents referred to DPH who received their vaccine within 2 weeks from date of referral	< 60%	60%-75%	> 75%	90% <sup>3</sup>
<b>Access to vaccines:</b> Percentage of eligible residents 12+ in the most vulnerable communities who have had 1+ additional dose/booster	< 45%	45%-60%	> 60%	53% <sup>4</sup>
<b>Outbreak management:</b> Percentage of high-risk worksite outbreaks that have had at least one site visit by DPH	< 75%	75%-85%	> 85%	100% <sup>5</sup>
<b>Access to therapeutics:</b> Number of sites in the most vulnerable communities that dispense therapeutics	< 150 sites	150-250 sites	> 250 sites	151 <sup>6</sup>
<b>Access to therapeutics:</b> Percentage of eligible residents using the call center who received recommended therapeutics	< 80%	80%-90%	> 90%	100% <sup>7</sup>



[covid19.lacounty.gov](https://covid19.lacounty.gov)

4/5/2022

Current values reflect data from the following dates:

<sup>1</sup> 3/25/22 - 4/01/22

<sup>5</sup> Outbreaks created 2/22/22 - 3/22/22

<sup>2</sup> 3/23/22 - 3/29/22

<sup>6</sup> Data as of 3/30/22

<sup>3</sup> 2/27/22 - 3/05/22

<sup>7</sup> 3/22/22 - 3/28/22

<sup>4</sup> 8/13/21 - 3/27/22

# LAC Post-Surge Preparedness Dashboard

Indicator	Thresholds			LA County Current Value
	Needs Improvement	Adequate	Outstanding	
<b>Testing access for the public:</b> Average wait time across all County-run testing sites	> 60 minutes	30-60 minutes	< 30 minutes	10 minutes <sup>1</sup>
<b>Testing access at schools:</b> Percentage of TK-12 public schools that have capacity for response testing	< 80%	80%-90%	> 90%	99% <sup>2</sup>
<b>Testing access at SNFs:</b> Percentage of Skilled Nursing Facilities (SNFs) that have capacity for routine response testing	< 90%	90%-99%	100%	100% <sup>3</sup>
<b>Surveillance – Sequencing:</b> Percentage of positive case specimens that are sequenced per week	< 5%	5%-15%	> 15%	5% <sup>4</sup>
<b>Surveillance – Wastewater:</b> Number of Service Planning Areas (SPAs) represented in wastewater collection and testing 3X/week	< 5	5-7	> 8	7 <sup>5</sup>
<b>Surveillance – EDs:</b> Percentage of EDs reporting COVID-like illness data	< 80%	80%-90%	> 90%	81% <sup>2</sup>



[covid19.lacounty.gov](https://covid19.lacounty.gov)

4/5/2022

Current values reflect data from the following dates:

<sup>1</sup> 3/21/22 - 3/26/22

<sup>2</sup> Data as of 3/30/22

<sup>3</sup> 3/20/22 - 3/26/22

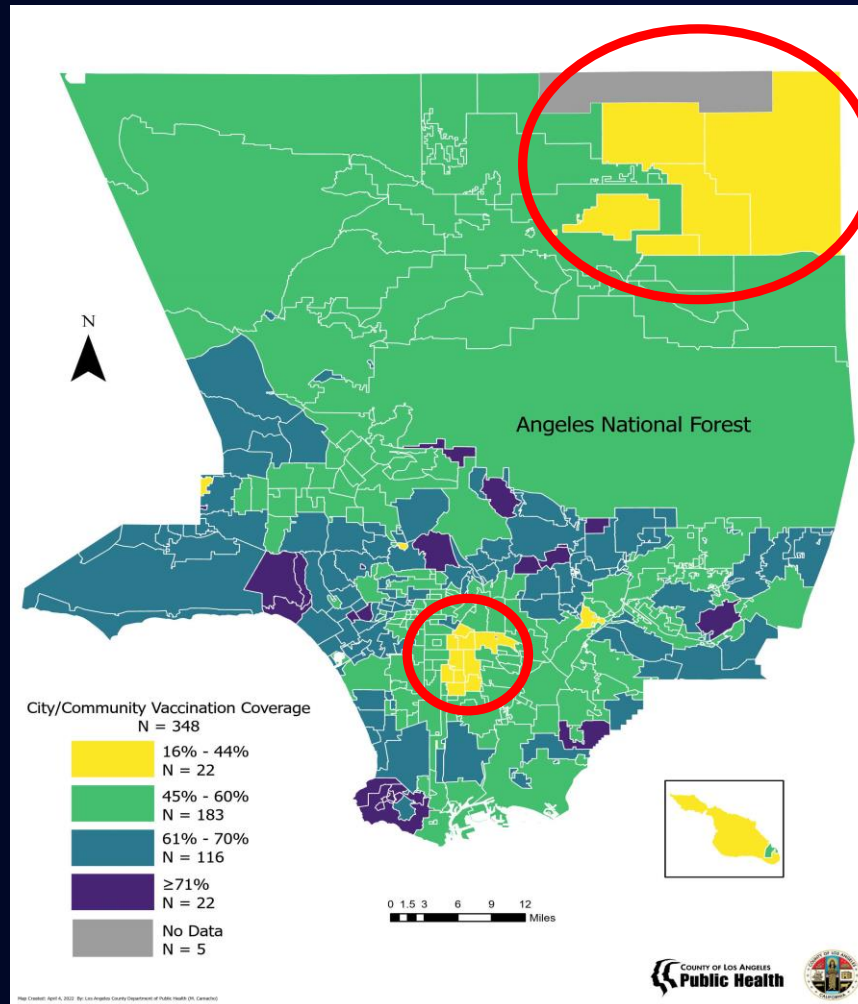
<sup>4</sup> 3/6/22 - 3/12/22

<sup>5</sup> Data as of 3/15/22



# Additional/Booster Dose Gaps by Geography

Percent of Eligible LAC Residents 12+ Years with 1+ Additional/Booster Dose by City/Community



Dark Purple and Dark Blue = Higher Vaccination Coverage Yellow and Light Green = Lower Vaccination Coverage



[covid19.lacounty.gov](https://covid19.lacounty.gov)

4/5/2022

# Percent of Eligible LA County Residents With 1+ Dose of Additional/Booster Vaccine by Age and Race/Ethnicity<sup>1</sup> as of March 27th, 2022

	12-17 <sup>2</sup>	18-29	30-49	50-64	65+	Entire racial/ethnic group <sup>3</sup>
<b>Black/African American</b>	31	42	50	64	73	57%
<b>Latinx</b>	27	40	46	59	70	49%
<b>American Indian/Alaska Native<sup>4</sup></b>	33	46	53	60	67	54%
<b>White</b>	48	55	64	70	76	66%
<b>Asian</b>	54	67	69	75	80	71%
<b>Entire age group<sup>5</sup></b>	36%	47%	54%	64%	74%	57%

<sup>1</sup>Number of LAC residents with a Moderna/Pfizer/J&J vaccine series completion who also received at least one additional dose of Moderna/Pfizer or Moderna/Pfizer/J&J booster dose on or after 8/13/2021 and ≥ 24 days after series completion.

<sup>2</sup> Additional doses may be highly variable in these age groups due to on-going record clean ups conducted by the State in CAIR.

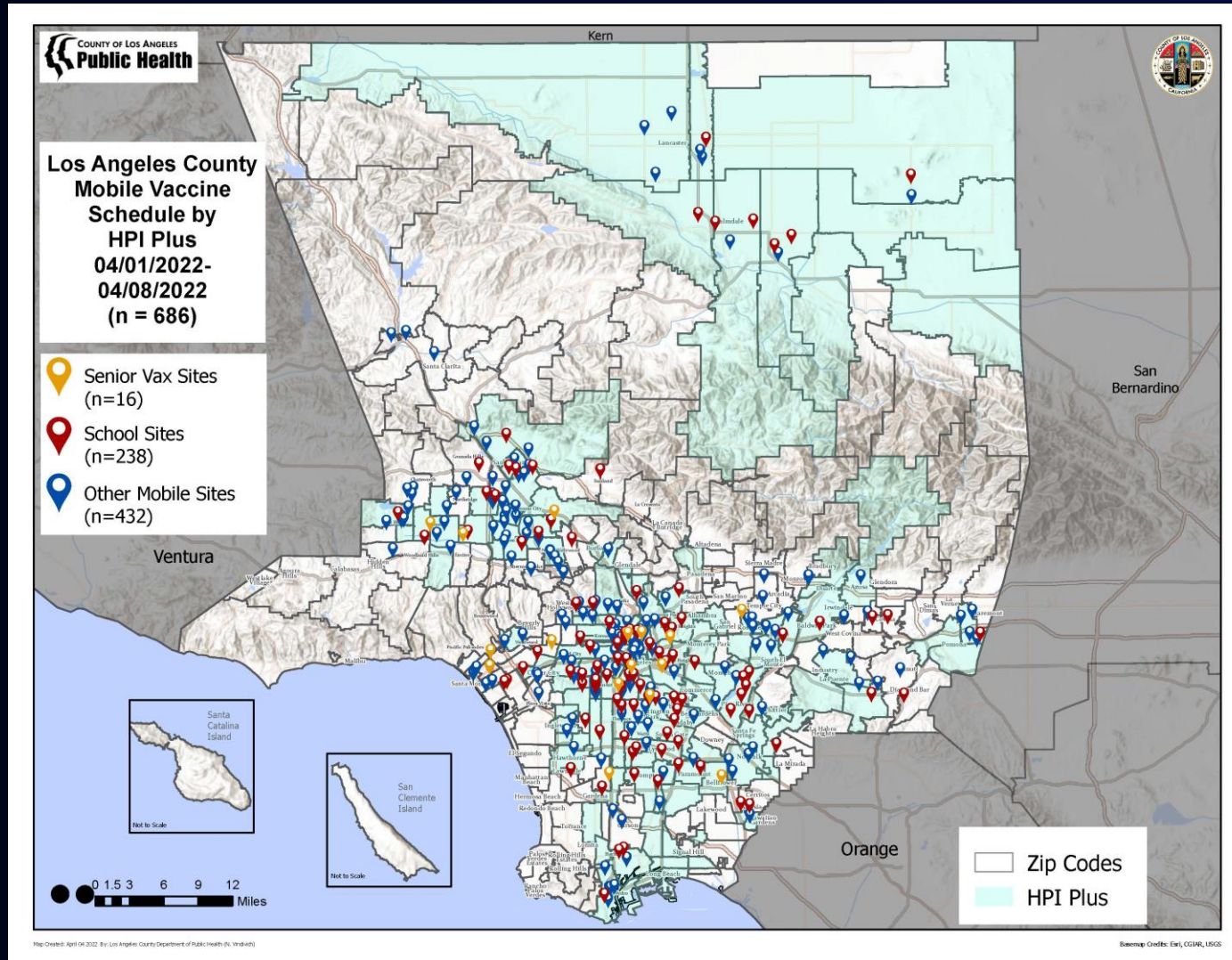
<sup>3</sup>LAC residents 12 and older (including Long Beach and Pasadena)

<sup>4</sup>Likely an overestimate due to inclusion of multiracial people

<sup>5</sup>Subgroup data for NHOPI, multiracial, other, and unknown categories included in overall count but not displayed due to likely inaccurate estimates.



# School and Senior Mobile Vaccination Sites by HPI Plus

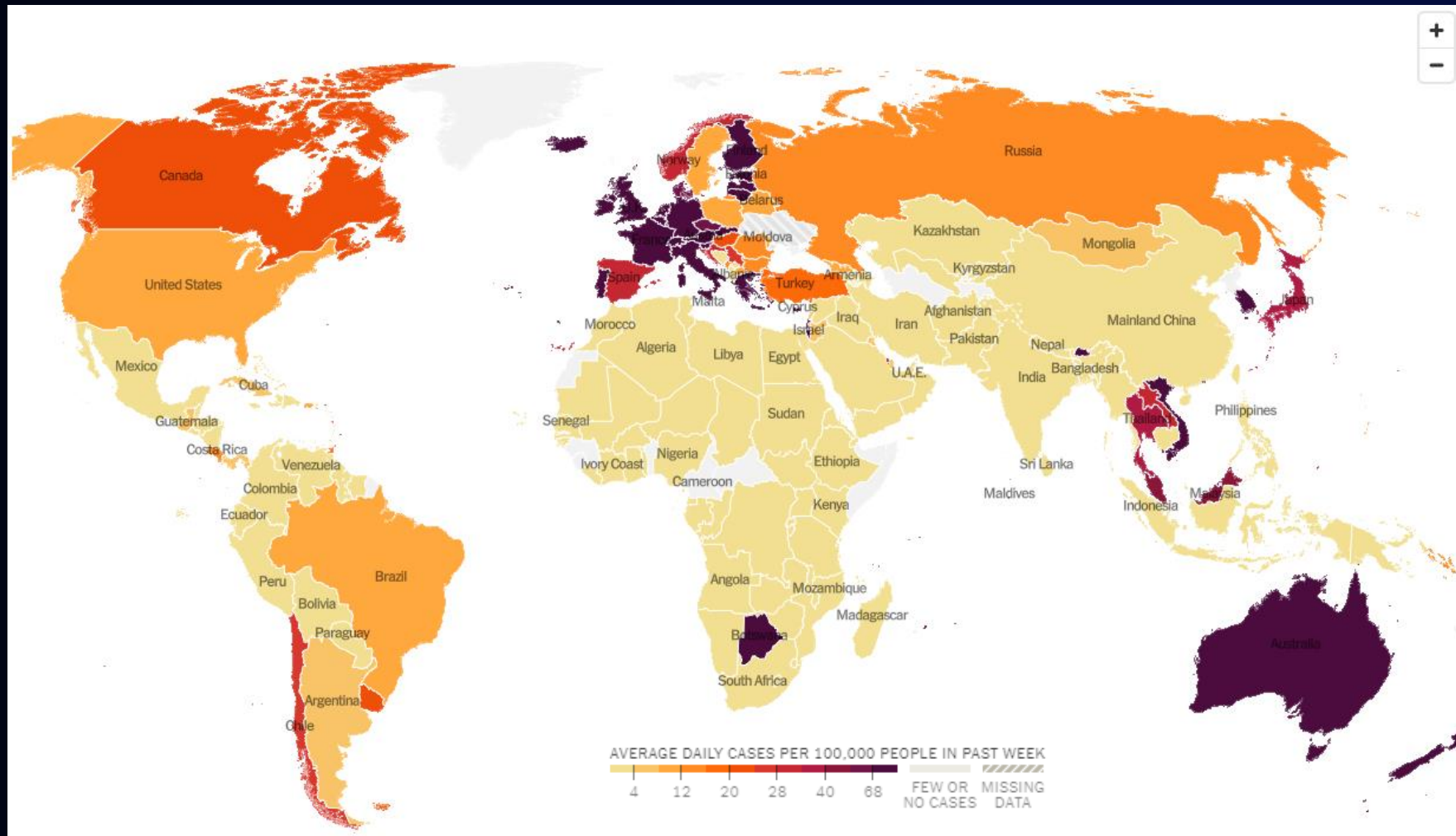


[covid19.lacounty.gov](https://covid19.lacounty.gov)

4/5/2022

# COVID-19 Case Rates in the Past Week Around the World

*Data from the New York Times as of April 4, 2022*



[covid19.lacounty.gov](https://covid19.lacounty.gov)

4/5/2022

# Four Action Steps to Reduce Risk from BA.2

1

## GET VACCINATED AND/OR BOOSTED AS SOON AS POSSIBLE

Being fully vaccinated provides strong protection against infection, hospitalization, and death. Being vaccinated and boosted provides the BEST protection.



2

## TALK TO YOUR PROVIDER NOW ABOUT THERAPEUTICS

If you can't get vaccinated due to medical reasons or your body can't mount an appropriate immune response, ask your provider about the therapeutic, Evusheld. If you test positive, ask your provider about treatments to reduce severe illness.



3

## GET TESTED

If you have symptoms, were exposed to COVID-19, or are gathering with folks at elevated risk, get tested. Stay home and avoid others if you test positive, are sick, or were exposed.



4

## WEAR A MASK INDOORS IN PUBLIC PLACES

Especially if you or anyone you're in contact with isn't fully vaccinated or is elderly, immunocompromised, or has serious underlying health conditions.



# 7-Day Case, Hospitalization, and Death Rate Ratios Quantify the Risk of Two Groups Relative to Each Other

## Groups Being Compared

Unvaccinated
to
Fully vaccinated

Cases <sup>1</sup>	2
Hospitalizations <sup>1</sup>	5
Deaths <sup>2</sup>	11



<sup>1</sup> Data reflects 3/12/22-3/18/22

<sup>2</sup> Data reflects 3/5/22-3/11/22

# Test to Treat Program

---

## Test to Treat Sites must:

- ✓ Offer services regardless of individuals' insurance status or ability to pay.
- ✓ Have accessible hours of operation and language translation services available.
- ✓ Either be able to conduct rapid COVID-19 testing (result available at time of visit) on-site or provide an evaluation of at-home testing results.
- ✓ Have health care providers available to provide assessment and discussion relevant to treatment option(s)
- ✓ Be able to readily dispense oral medications to eligible patients.
- ✓ Have a plan to refer patients to a provider able to offer infusion services should oral medications be contraindicated, and the patient needs to receive either an anti-SARS- CoV-2 monoclonal antibody (e.g., Bebtelovimab) or IV Remdesivir.

---

## Department of Public Health “Test to Treat” Tele-Health Services:

- DPH Call Center: seven days a week from 8:00am-8:30pm at 833-540-0473
- Healthvana Pilot Project: DHS-Fulgent testing sites located in HPI+ communities; referrals to telehealth visits
- DPH POD Sites: patients who require testing can come to one of three POD sites in LA County



# Department of Public Health “Test to Treat” Tele-Health Services

---



## DPH Call Center/Tele-Health Services: CALL 833-540-0473

- Seven days a week from 8:00am-8:30pm
  - Answer questions and connect to services (Test to Treat site, DHS-Fulgent Testing, or DPH POD site)
  - Patients who already have a positive test result but need evaluation and treatment will either be referred to a nearby Test to Treat center or can use the DPH telehealth services.
  - If using telehealth service, provider will evaluate and, if appropriate, have medications shipped overnight
- 



## Healthvana Pilot Project:

- 26 DHS-Fulgent testing sites located in underserved communities
  - Patients who test positive at one of these sites will receive a text from Healthvana with their test results and, if symptomatic, will be directed to DPH Call center
  - Routed for a telehealth visit with overnight shipment of medications
- 



## DPH Vaccination Sites:

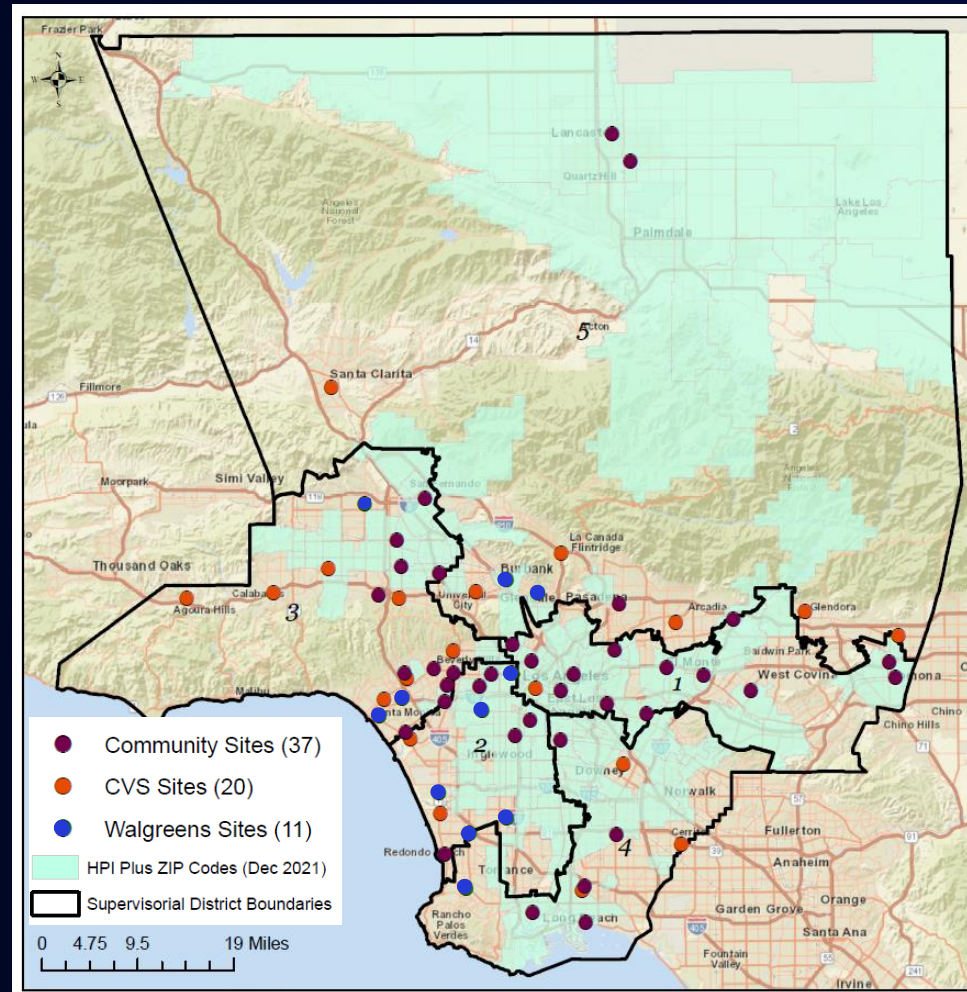
- Patients who require testing can go to one of three DPH Vaccination sites:
    - Market Street Center, Santa Clarita
    - Obregon Park, East LA
    - Ted Watkins Memorial Park, South LA
  - If they test positive and are symptomatic, they will be directed to the call center where they will be connected to a DPH telehealth provider who can determine eligibility with medications shipped overnight.
- 





# COVID Test to Treat Sites by HPI Plus and Supervisorial Districts

## April 1, 2022



[covid19.lacounty.gov](https://covid19.lacounty.gov)

4/5/2022