



# Secure Youth Treatment Facility

---



# Secure Youth Treatment Facility

Los Angeles County continues to discuss the best possible location for the Secure Youth Treatment Facility (SYTF).

Los Angeles County continues to decrease the number of youth in detention, which has resulted in a population with higher risks and higher needs.

The youth ordered to SYTF have committed serious offenses and need longer-term care in a safe and secure environment. Most of these youth have mental health needs, and many have had contact with the child welfare system.

# SYTF POPULATION

---

Most DJJ youth have prior Juvenile Court ordered delinquency wardship prior to their DJJ disposition. They will serve longer sentences because of their DJJ disposition.

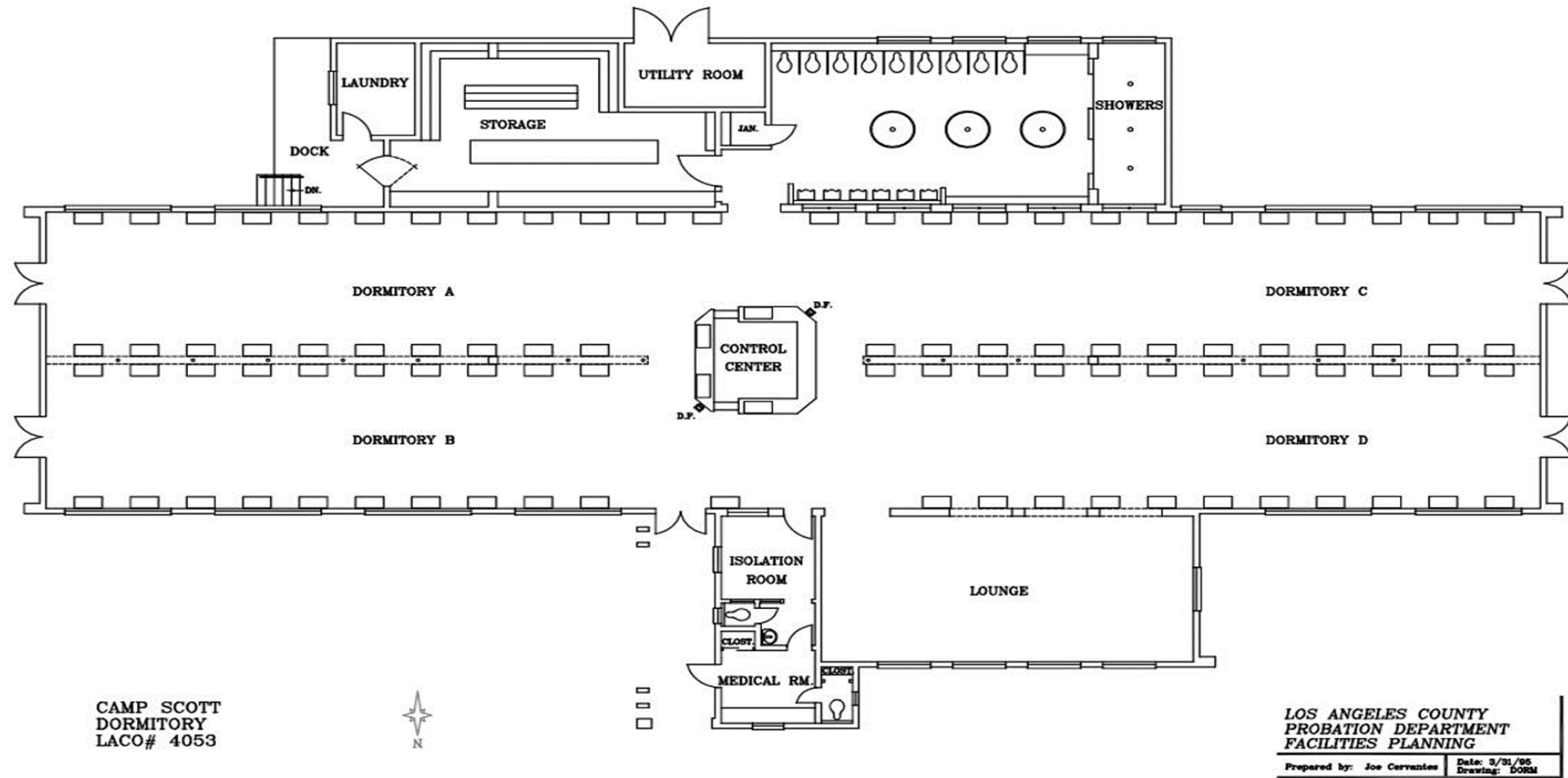


The annual average of LA County youth at DJJ is 150. We anticipate that our SYTF will grow to 100-150 over the next 18-24 months.

# SYTF Background

Camps Scott, Paige, and Afflerbaugh were identified as potential permanent SYTF sites; any option would only provide capacity for 40.

Proposed camps all require enhancements, capital investment and require more than one site to meet population need.



# Current Camp Dormitory





# REIMAGINING BARRY J. NIDORF Juvenile Hall (BJNJH)

---



# Providing a Trauma-informed **CONTINUUM OF CARE**

---

In order to comply with Title 15 standards and provisions of the California DOJ stipulated judgment, Juvenile Halls must be transformed to represent a more homelike environment.

We imagine a transformational environment that is conducive to a therapeutic milieu consistent with the LA Model.



# BJNJH AS A PERMANENT SYTF

---

Centralized location is ideal for families, community-based providers, partner agencies and County employees

Allows for time and space to implement while there is a small SYTF population

Minimal community opposition

Can accommodate individualized programming for 150

No adverse impact to other camp or detention programs

Can implement a 5/40 staffing schedule (which is ideal for the LA Model)

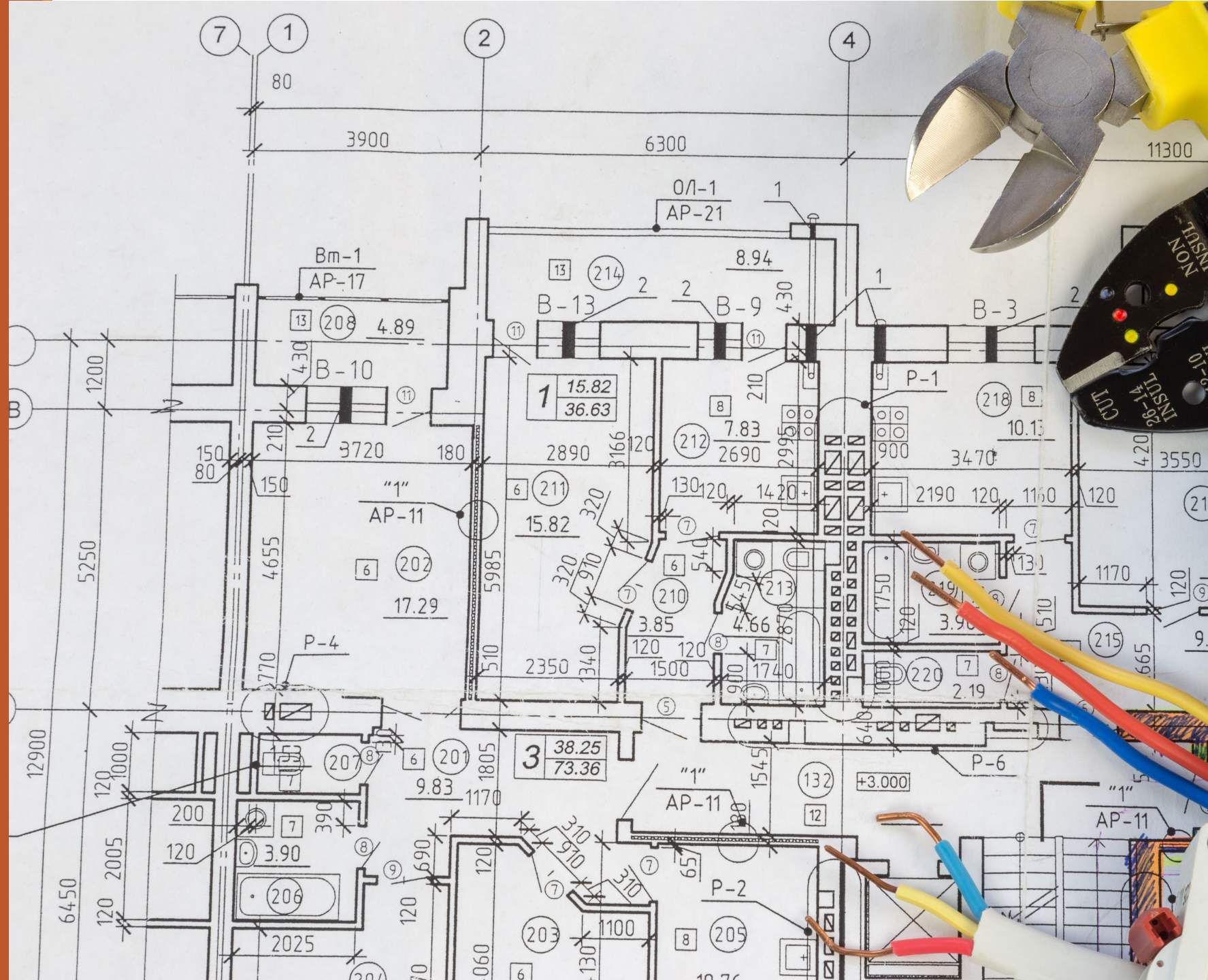
Increased opportunities to partner with community organizations for CTE/Vocational Training programs



# Ideal Design at BJNIH

Convert half the Compound to SYTF and section off northeast portion of BJNIH to create a new SYTF facility.

- Remove the fence around the Compound,
- Divide Compound buildings A and B
- Section off northeast portion
- Create a separate entrance



# Ideal Design OFFERS

---

Approximate Capacity – 220 SYTF and 360 non-SYTF

---

Designates different buildings for intake, stages and step down

---

Designates space for HOPE Center

---

Designates dedicated area outside the living unit for programming

---

Designates area for visiting which would allow for visiting 7 days a week

---

Creates space for CTEs and college classes

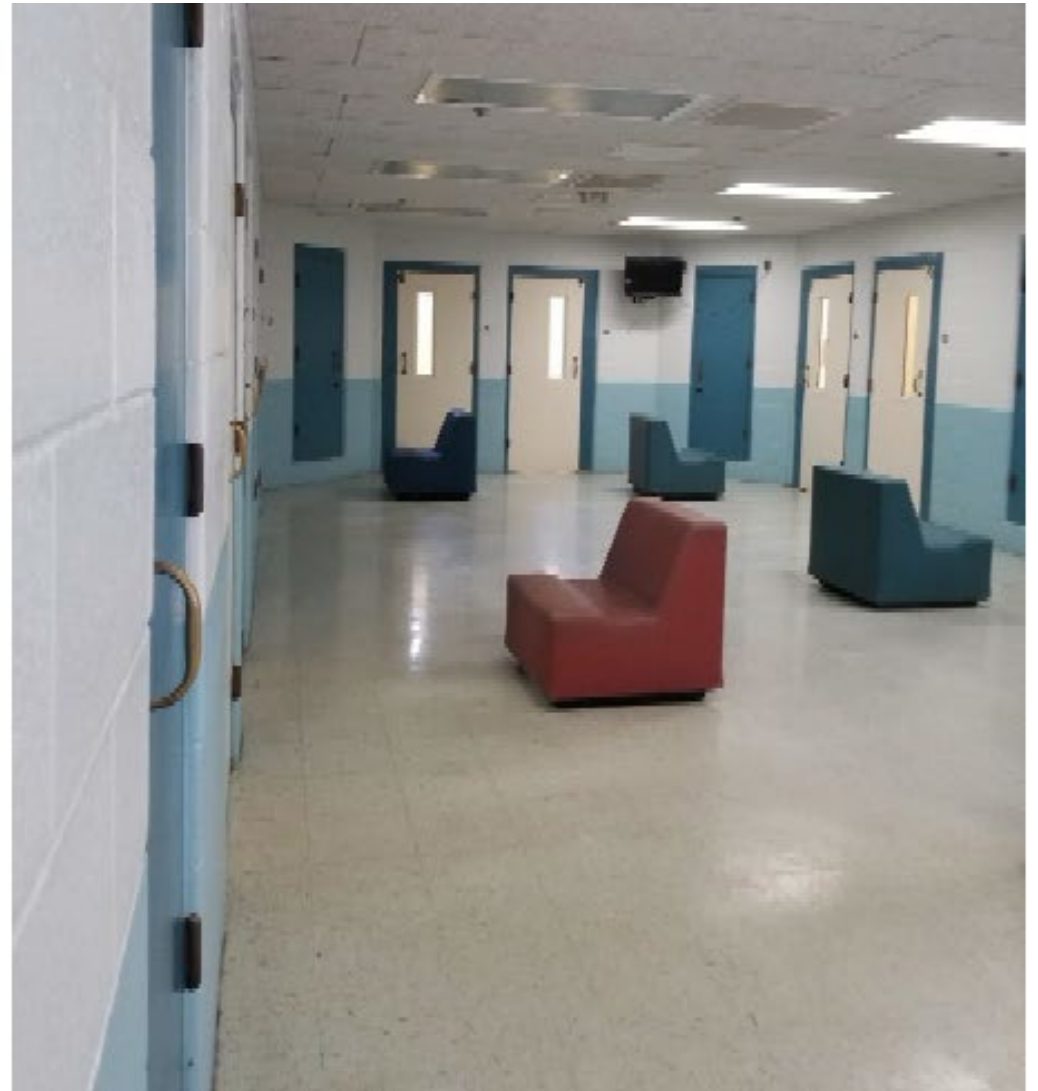
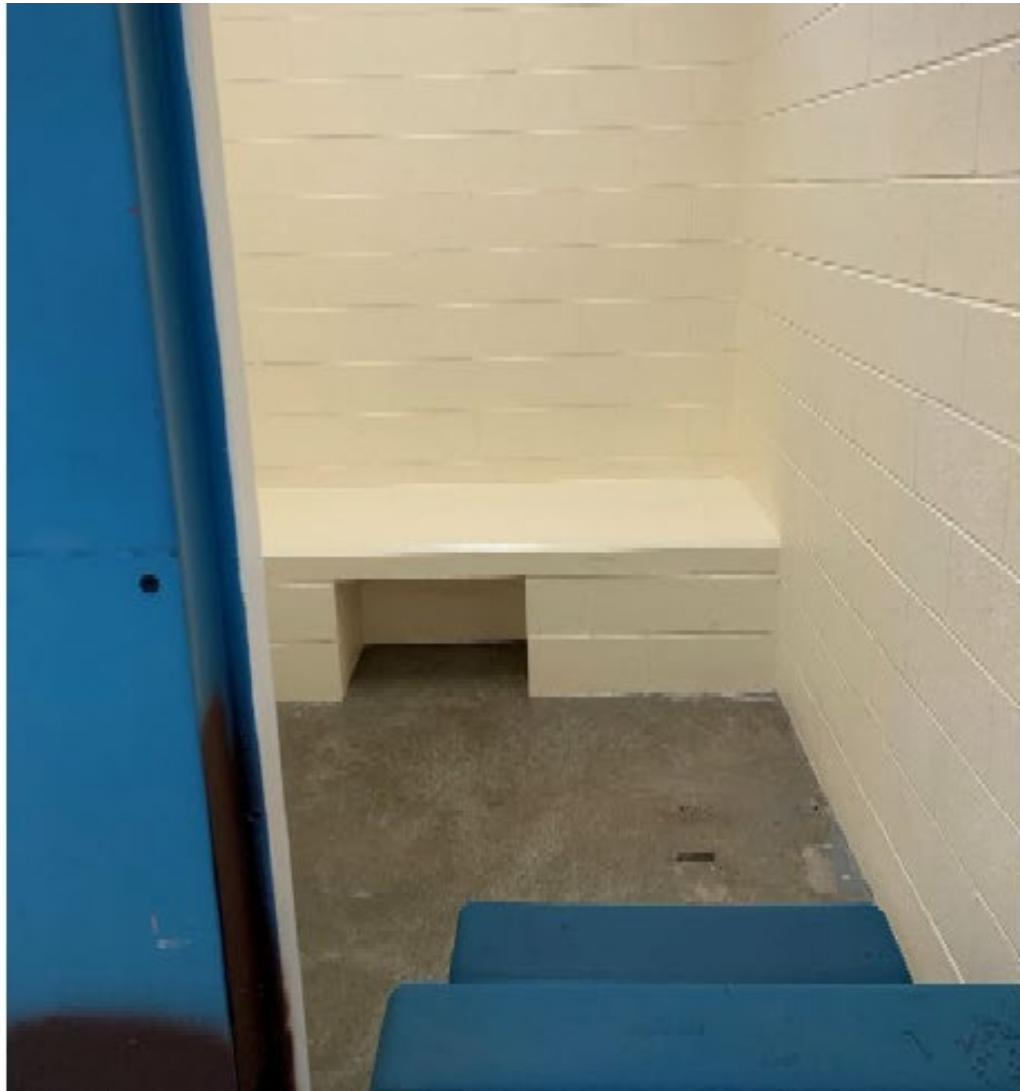
---

Designates a building for administrative office

---

Creates a non-locked facility for stage 8 that can be ran by YDD or CBO















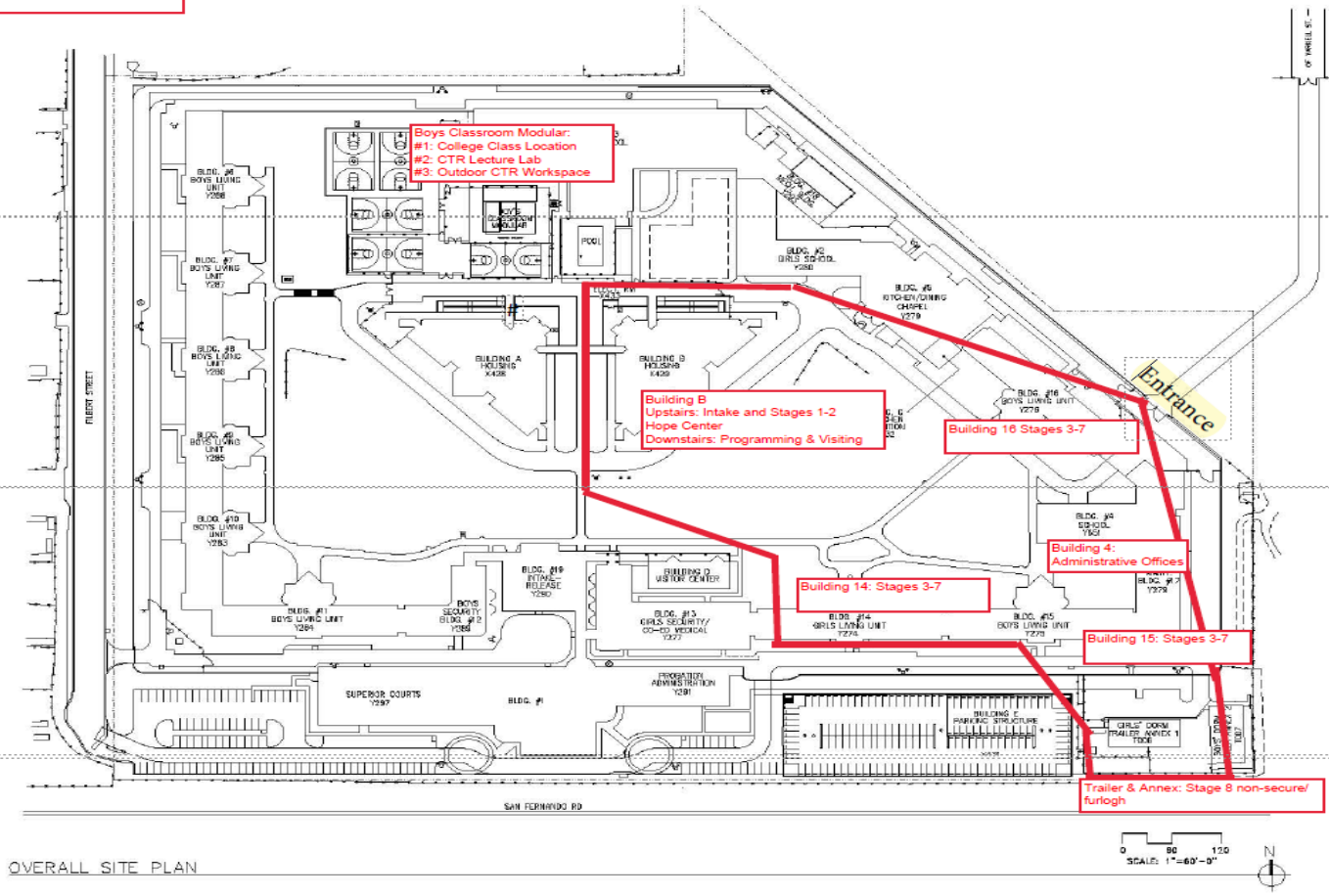












OVERALL SITE PLAN

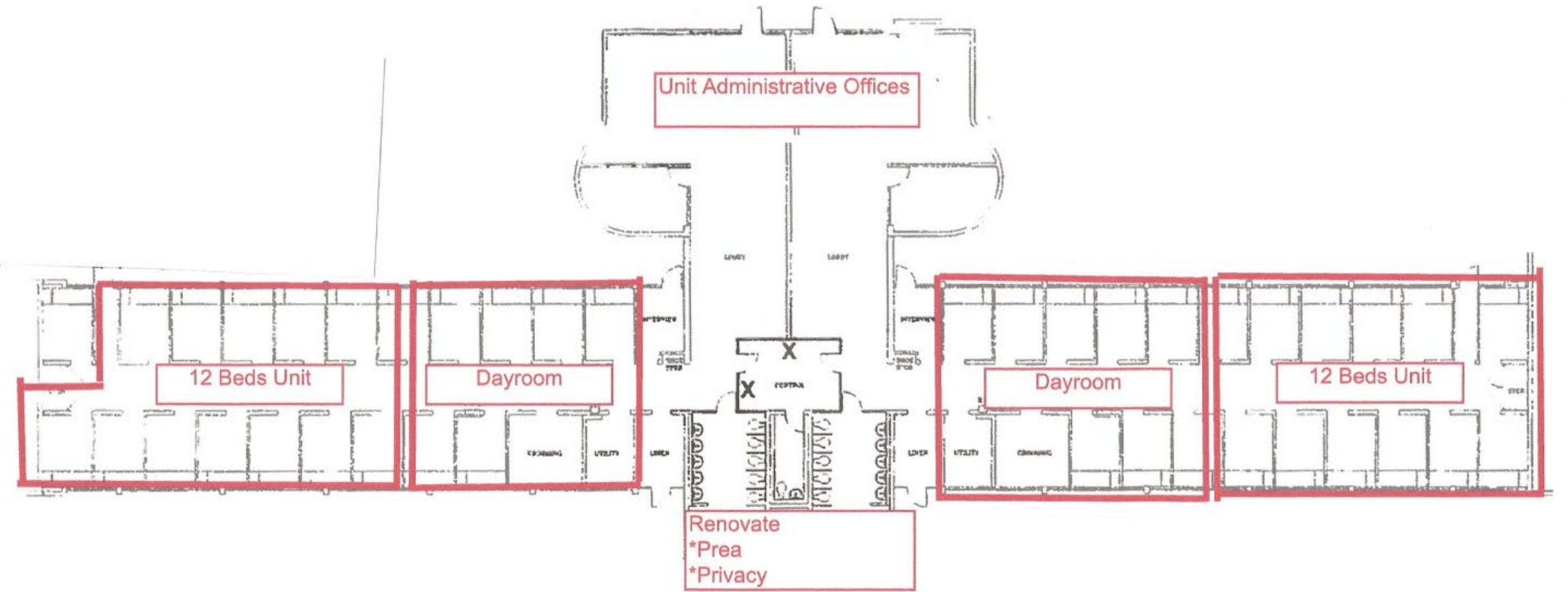
LOS ANGELES COUNTY  
PROBATION DEPARTMENT  
FACILITIES PLANNING

PROBATION DEPARTMENT  
BARRY NIDORE JUVENILE HALL  
16350 FILBERT STREET  
STYLAR, CA 91302

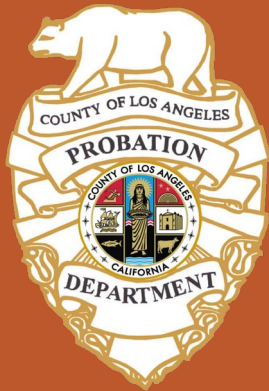
SITE PLAN

A-1

IDEAL OPTION



# REIMAGINING BJNJH



Only facility that can accommodate projected SYTF capacity while providing homelike living quarters, individual rooms and open-dorm setting

BJNJH will be transformed into a less carceral space for a continuum of care and therapeutic services

Consolidates resources into one location rather than multiple sites

Aligns with Youth Justice Reimagined by maintaining the same number of juvenile facilities in LA County

Can be fully implemented in a shorter amount of time