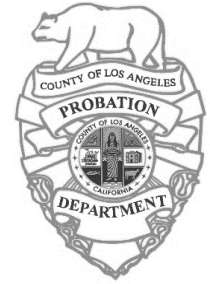




ADOLFO GONZALES
Chief Probation Officer

COUNTY OF LOS ANGELES PROBATION DEPARTMENT

9150 EAST IMPERIAL HIGHWAY – DOWNEY, CALIFORNIA 90242
(562) 940-2501



February 8, 2022

Proposal for a Secure Youth Track facility at Barry J. Nidorf Juvenile Hall

Overview

This is a proposal for the development of a Secure Youth Track Facility (SYTF) at Barry J. Nidorf Juvenile Hall (BJNJH). It offers viable options for a permanent SYTF site at BJNJH that achieves the goals identified by various stakeholders and upholds Probation's commitment and responsibilities to the SYTF youth in our care.

Background

Efforts to identify a permanent SYTF facility have been in motion since July 2021. As of January 2022, no permanent SYTF site has been identified and there are 16 youth, who would have otherwise been committed to the DJJ, temporarily being housed at BJNJH.

Over the past several months, Probation collaborated with facility experts to assess each of its licensed juvenile facilities. Each facility was evaluated in a total of thirty-three areas, based on the "ideal program" characteristics, predicated on national best practices, LA Model, and visioning of Youth Justice Reimagined (YJR). The Juvenile Justice Realignment Block Grant (JJRBG) subcommittee reviewed and analyzed these findings and submitted scoring and site recommendations to the Board on October 18, 2021, that identified Camp Afflerbaugh, Camp Paige, Campus Kilpatrick, Camp Scott, and Dorothy Kirby Center (for females) as feasible sites. Probation engaged the community in several public meetings to share these recommendations and received significant opposition.

Objective

- Need #1: Move the identification of a permanent SYTF forward

- Need #2: Consolidate resources to fulfill an immediate, short term, and long-term solution to house youth ordered to SYTF.

Rebuild Lives and Provide for Healthier and Safer Communities

Need #3: Utilize a site that has the capacity to serve the SYTF population in an ideal manner

The Opportunity

Goal #1: Lead efforts to identify a permanent SYTF site and initiate eliminating the negative stigma associated with the Compound while operationalizing Youth Justice Reimagined at BJNJH

Goal #2: Identify and renovate initial SYTF location at BJNJH and have youth placed before the end of this fiscal year

Goal #3: Identify, recruit, hire, and train staff that would work a 5/40 schedule and implement before the end of the fiscal year

Goal #4: Create a three-year phased plan to transform BJNJH, develop a SYTF. Initial renovations to begin by March 15, 2022

OUR PROPOSAL

The below options offer two scenarios for development of a permanent SYTF at BJNJH. The estimated cost and length of time to develop needs to be determined. Each option aligns with the vision of Youth Justice Reimagined, will serve as an excellent site to implement the LA Model, and offers a step-down option. It should be noted that each option does decrease BJNJH's total capacity of approximately 580 to house pre-adjudicated youth. The capacity remaining after adding the projected 150-bed SYTF is 430, which more than sufficient. The five-year average population at BJNJH is 181. Both proposed options offer the below benefits:

- BJNJH is centrally located which is ideal for families, community-based providers, partner agencies and County employees
- Allows for time and space to reconfigure buildings while we have a relatively small SYTF population
- Community based opposition would be minimal as this population and 707(b) youth have always been housed at BJNJH and meets the necessary security needs
- BJNJH has plenty of available space to accommodate individualized programming for the projected population of 150
- Utilizing BJNJH would not adversely impact any other camp or detention programs

- It is easier to negotiate a 5/40 staffing schedule (which is ideal for the LA Model) because BJNJH is not a camp and more centrally located
- Creates increased opportunities to partner with community organizations for Career Training Education (CTE)/Vocational Training programs in the community

Scenarios

Option #1: Convert half the Compound to SYTF and section off the northeast portion. This would include removing the fence around the Compound, divide buildings A and B, section off northeast portion and create a separate entrance. (Attachment 1).

- Approximate Capacity – 220 SYTF and 360 non-SYTF
- Intake and Stages 1-2 – Upstairs in the former Compound building B
- HOPE Center – Upstairs in the former Compound building B
- School – Could share with the Compound or designate building #2
- CTEs – Build area for college classes, lecture lab and outdoor workspace in Boys Classroom Modular
- Programming – Downstairs in the former Compound building B
- Outside Area – Designated green space and can add basketball or hand ball courts
- Step down – Buildings 14, 15 and 16 stages 3-7; stage 8 trailer and annex 1 non-secure/furlough
- Medical – Shared with BJNJH
- Administrative Offices – Building 4
- Visiting – Downstairs in the former Compound
- Entrance – Separate off Yarnell St.

Option #2: Build a new facility and designate the northeast portion SYTF. This would continue the fence around the Compound, create a separate entrance and construct a new building in the green space. (Attachment 2). The below outlines information related to the existing infrastructure and does not account for the additional space a new building would offer.

- Approximate Capacity – 80 SYTF and 500 non-SYTF
- Intake and Stages 1-2 – Building 14 with HOPE Center
- HOPE Center – Building 14 with intake and stages 1 and 2

- School – Could share with the Compound or designate building #2
- CTEs – Build area for college classes, lecture lab and outdoor workspace in Boys Classroom Modular
- Programming – In the units
- Outside Area – Designated green space and can add basketball or hand ball courts
- Step down – Building 15 & 16 stages 3-7; stage 8 trailer and annex 1 non-secure/furlough
- Medical – Shared with BJNJH
- Administrative Offices – Building 4
- Visiting – Shared with BJNJH
- Entrance – Separate off Yarnell St.

CONCLUSION

This proposal for the development of a permanent SYTF at BJNJH offers options that are more feasible than any of the options recommended by JJRBG. Moving forward with one of these options puts Probation at the forefront of the SYTF decision making efforts as the experts in the field of youth security and care. Selecting BJNJH as the SYTF site would reflect us leading to move youth justice reimagined forward in a manner that works best for all those potentially impacted.

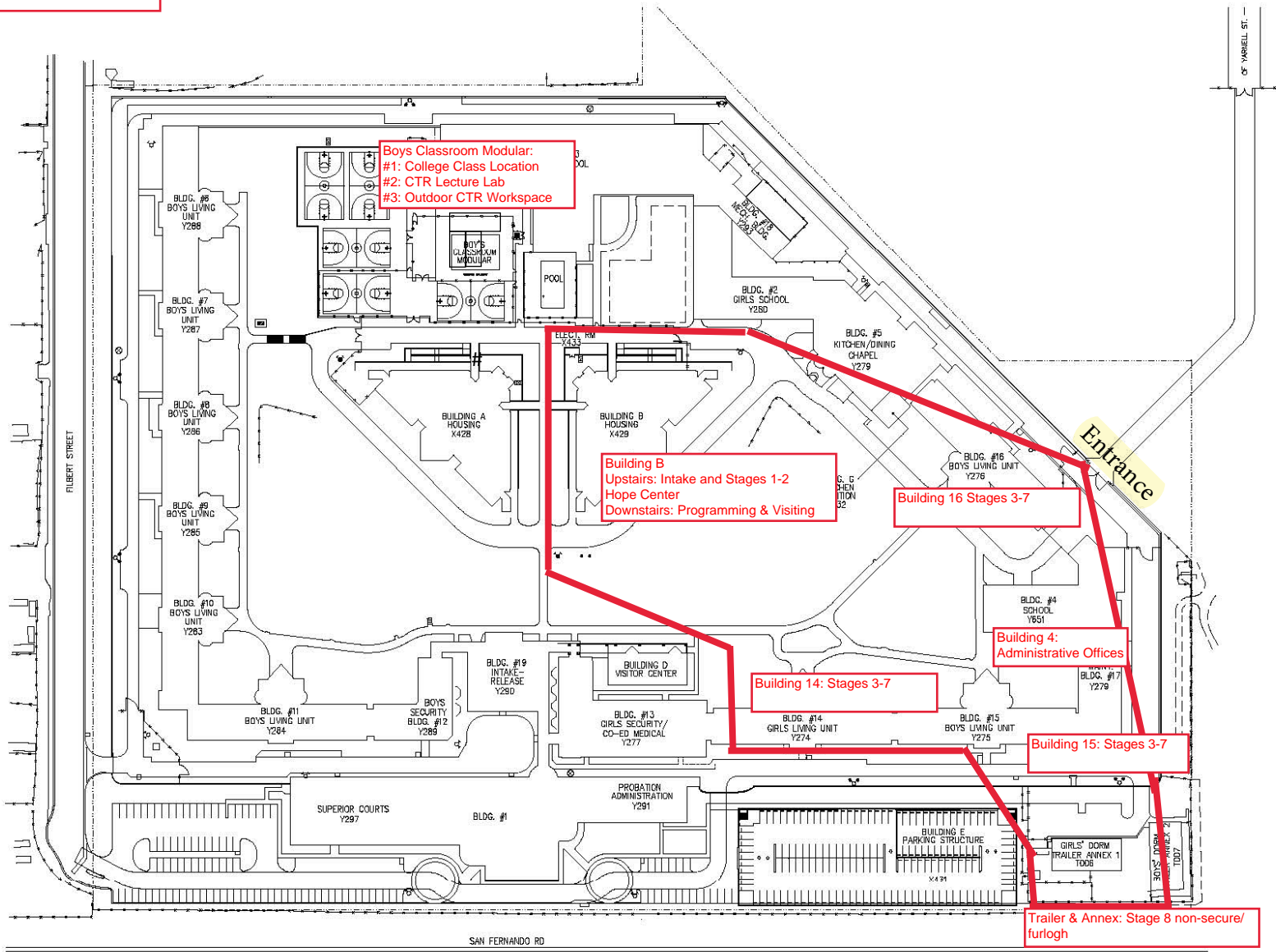
Although there are two scenarios offered in this proposal, option #1 is recommended. It can be fully implemented in a shorter amount of time. It avoids the cost of building any new structures on campus, allows for greater outdoor space, and allows for visiting 7 days a week. Option #1 aligns with the county's priority to maintain a smaller "footprint" of juvenile institutions.

We look forward to your feedback and decision on how best to move forward. Thank you for your consideration.

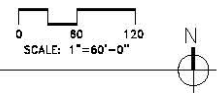
Secure Youth Track Facility Proposal at Barry J. Nidorf Juvenile Hall

Factors for Consideration

| CONSIDERATIONS | FISCAL IMPLICATIONS | ALIGNMENT WITH YOUTH JUSTICE REIMAGINED | COMMUNITY IMPLICATIONS | LIKELY OUTCOMES | NEXT STEPS |
|--|---|---|--|--|--|
| <ul style="list-style-type: none"> • Will avoid potential lawsuits from the city of Santa Clarita, La Verne and Malibu • Will maximize efficiency by not putting efforts towards a facility we will outgrow by the time it is completed • Avoid triggering CEQA • No competing land use • No need for a second facility • Fire danger • Solution for immediate, short term and long term need of a 150 population | <ul style="list-style-type: none"> • Cost estimate TBD based on final approved design • Anticipate relatively moderate cost since it is a newer facility with available space to enhance or build • Estimated cost for DOJ and BSCC approved upgrades to four units is approximately \$4 million • Probation is eligible for State funds to offset cost • Potential to collect revenue by offering beds to other counties • Will avoid dividing financial resources towards other facilities that cannot meet long term population need | <ul style="list-style-type: none"> • Public Access/ Proximity to Family/Community, Operational Emergency, Emergency Services • Proximity to Urban Center, Vocational Schools, Community Colleges • Proximity to Staff Residences • Sufficient space for outdoor recreation, programming, education and visiting • Supports the implementation of the LA Model • Supports the implementation of a non-camp staffing schedule that maximizes ability to build rapport with the youth • Creation of a therapeutic Home-like environment | <ul style="list-style-type: none"> • Anticipate no opposition from the city of Sylmar residential community since this population is currently there and has always been there • Possible opposition from certain advocate communities because of the association of BJNJH with a “kids’ prison” | <ul style="list-style-type: none"> • County – Will resolve an immediate need while consolidating resources into one facility for short term and long-term need • Youth – A continuum of services and programming that support their transition to the community will be centralized and quickly operationalized • Community – Will help develop and design the long-term solution for Youth Justice Reimagined with SYTF • State – Become a flagship treatment center in the state to model for other counties | <ul style="list-style-type: none"> • Develop a phased plan that resolves immediate, short term and long-term needs • Engage community and partner agencies • Rebrand the Compound and BJNJH |



OVERALL SITE PLAN



| | |
|----------|------|
| APPROVAL | DATE |
| REVISION | DATE |
| TITLE | |
| REVISION | DATE |
| TITLE | |
| REVISION | DATE |
| TITLE | |

LOS ANGELES COUNTY
 PROBATION DEPARTMENT
 FACILITIES PLANNING
 810 EAST IMPERIAL HIGHWAY, DOWNEY, CALIFORNIA 90242

PROBATION DEPARTMENT
 BARRY NIDORF JUVENILE HALL
 16950 FILBERT STREET
 SYLMAR, CA 91342

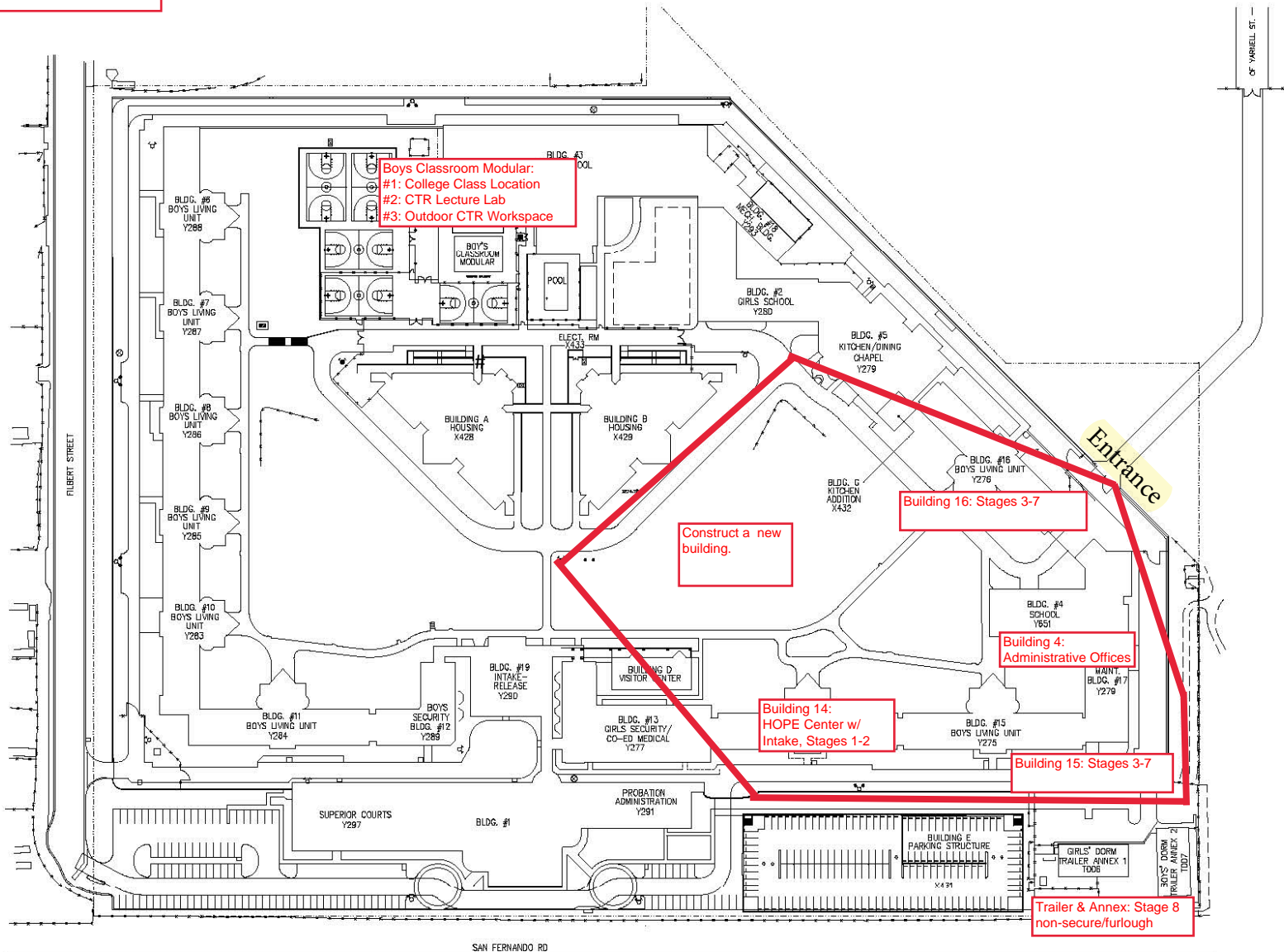
SITE PLAN

| | |
|--------------|--|
| DATE | |
| PROJECT NO. | |
| JOB DIVISION | |
| DRAWN BY | |
| CHECKED BY | |

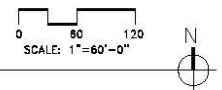
A-1

HEET NO. 1 OF 1

NOTE: CONTRACTOR SHALL VERIFY ALL DIMENSIONS AND BE RESPONSIBLE FOR SAME.



OVERALL SITE PLAN



| | |
|-------------|------|
| APPROVAL | DATE |
| APPROPRIATE | DATE |
| TITLE | |
| APPROPRIATE | DATE |
| TITLE | |
| REVISION | DATE |
| | |
| | |
| | |
| | |

LOS ANGELES COUNTY
PROBATION DEPARTMENT
FACILITIES PLANNING
810 EAST IMPERIAL HIGHWAY, DOWNEY, CALIFORNIA 90242

PROBATION DEPARTMENT
BARRY NIDORF JUVENILE HALL
16950 FILBERT STREET
SYLMAR, CA 91342

SITE PLAN

| | |
|--------------|--|
| DATE | |
| PROJECT NO. | |
| JOB DIVISION | |
| DRAWN BY | |
| CHECKED BY | |

A-1

SHEET NO. 1 OF 1

NOTE: CONTRACTOR SHALL VERIFY ALL DIMENSIONS AND BE RESPONSIBLE FOR SAME.