

Los Angeles County Board of Supervisors

January 25, 2022

Set Item 2. Public Health Order

Barbara Ferrer, PhD, MPH, MEd

Director, Department of Public Health



covid19.lacounty.gov

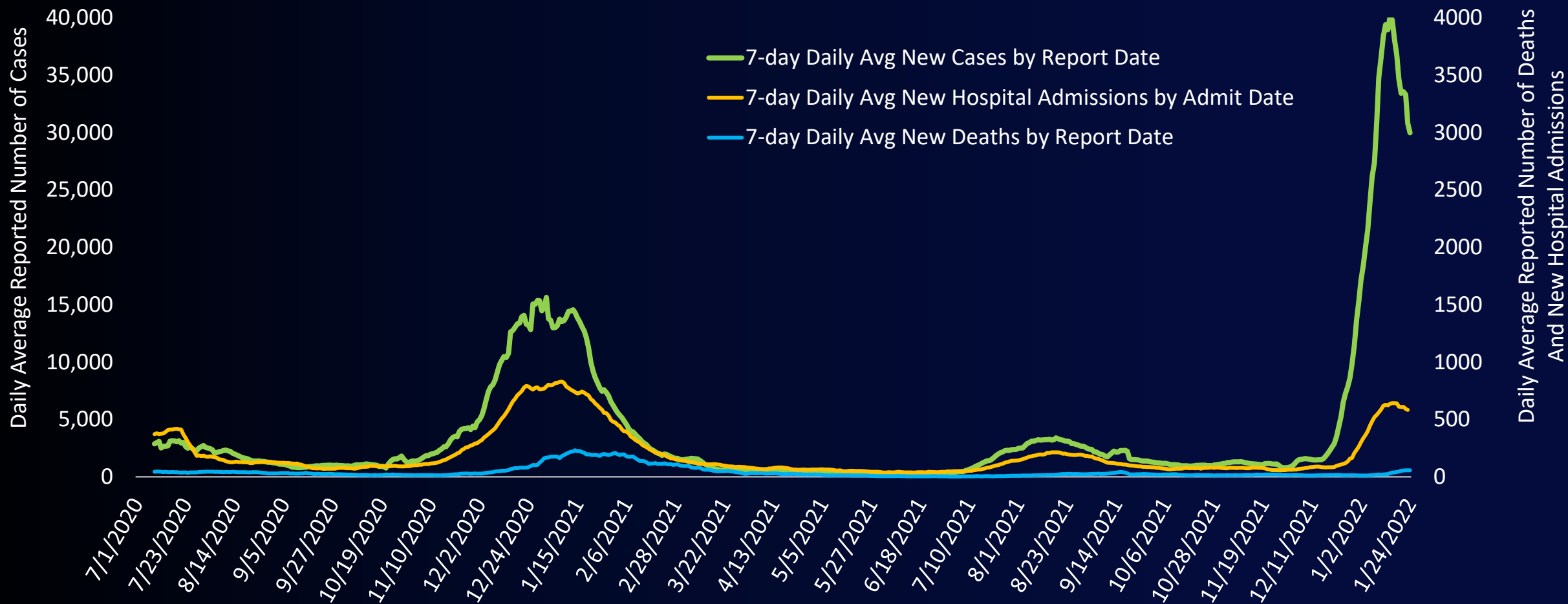
1/25/2022

Past Week Status

	M 1/24	Su 1/23	Sa 1/22	F 1/21	Th 1/20	W 1/19	Tu 1/18
Daily new cases	25,784	26,354	39,117	43,091	42,115	31,018	22,688
Daily deaths	27	63	72	65	102	59	37
Daily hospitalizations of confirmed cases	4,573	4,568	4,698	4,792	4,814	4,799	4,701
Daily positivity rate (7-day avg)	13.5%	14.2%	14.6%	15.3%	15.9%	16.1%	16.9%
Daily Case Rate (7-day avg)	311	319	345	348	346	359	381



New COVID-19 Cases and Deaths by Report Date* and New Hospital Admissions by Admit Date – 7-Day Daily Average July 1st, 2020 - January 24th, 2022



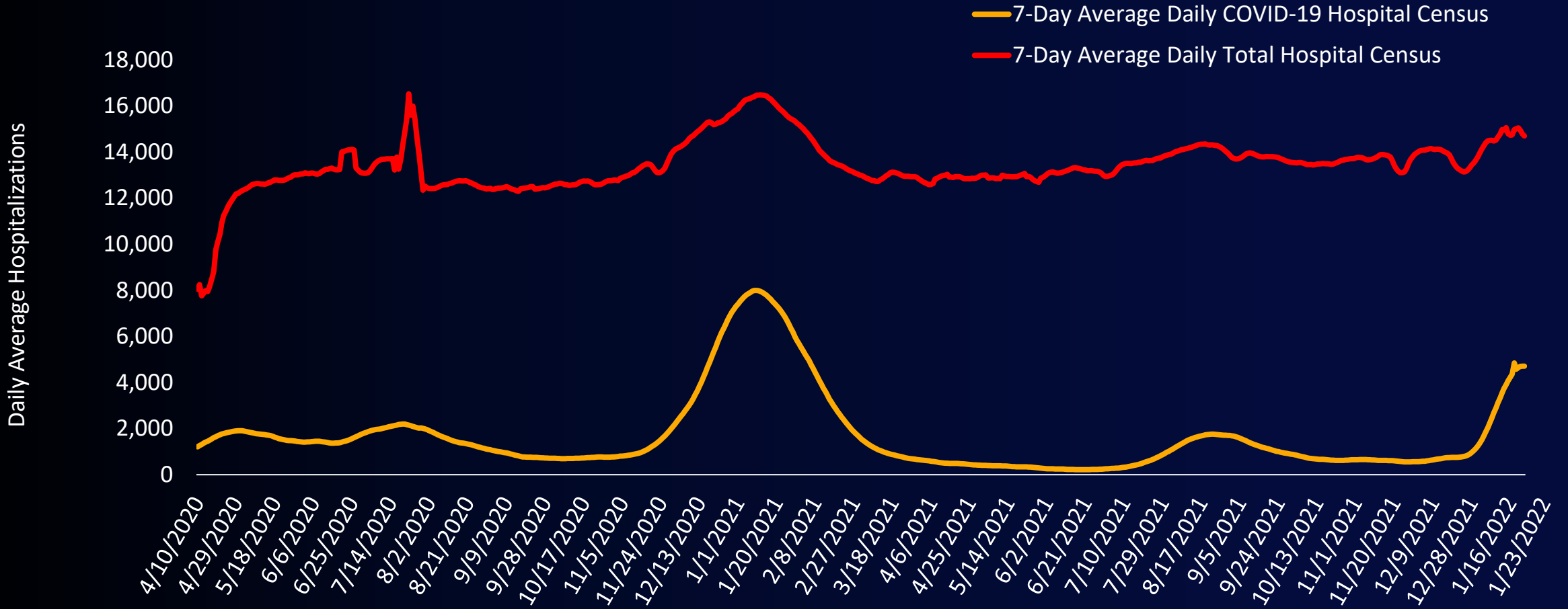
covid19.lacounty.gov

1/25/2022

*Cases and deaths from the cities of Pasadena and Long Beach are NOT included

Daily Average COVID-19 Hospitalization Census

April 10th, 2020 – January 23rd, 2022

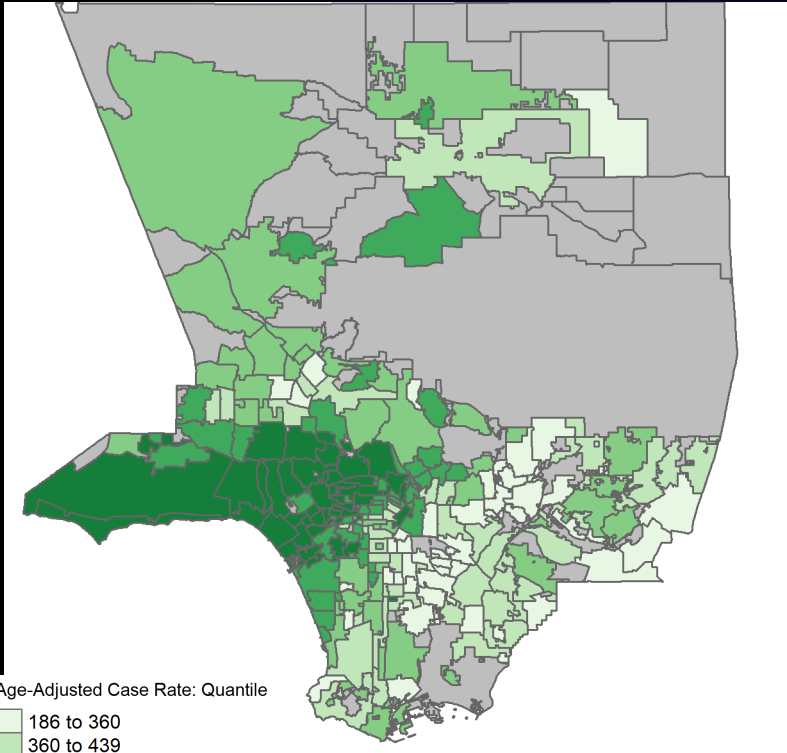


covid19.lacounty.gov

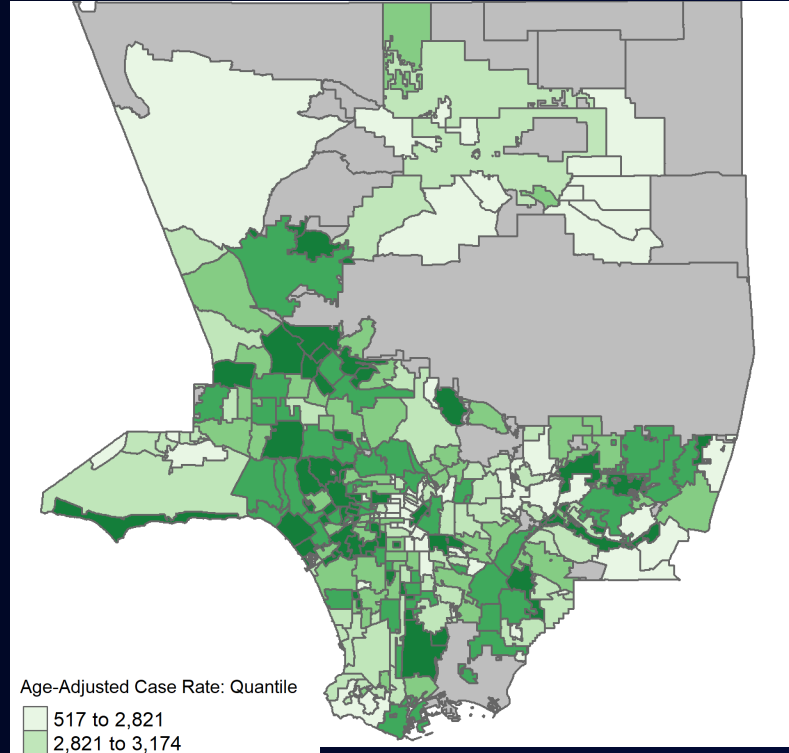
1/25/2022

14-Day Cumulative Age-Adjusted Case Rates per 100,000 by City/Community

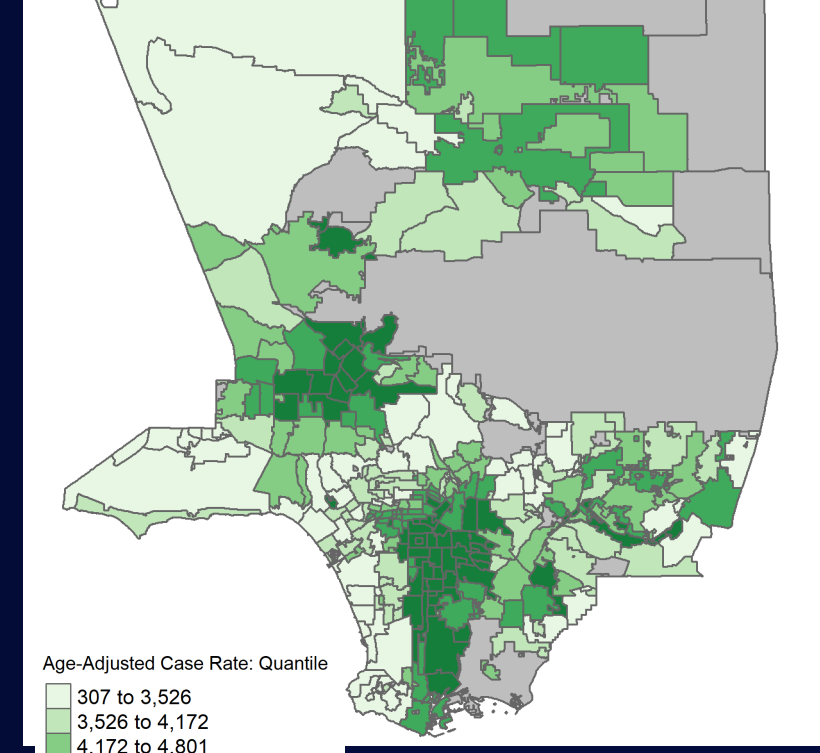
December 7 – December 21



December 22 – January 4



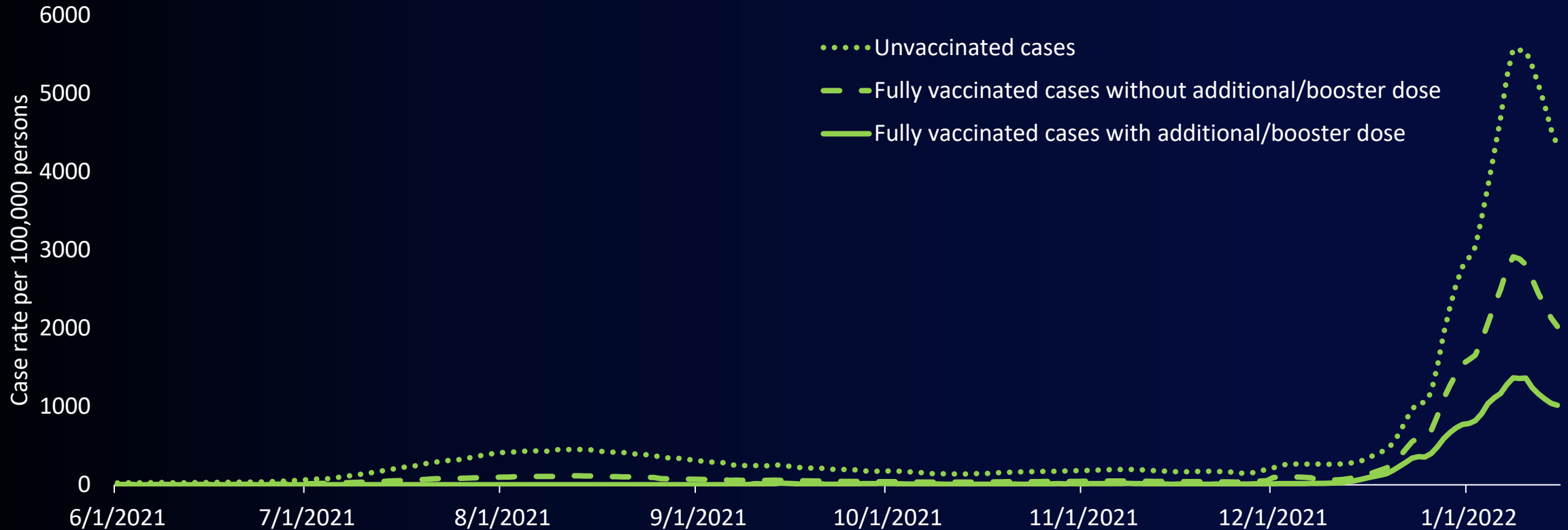
January 5 – January 18



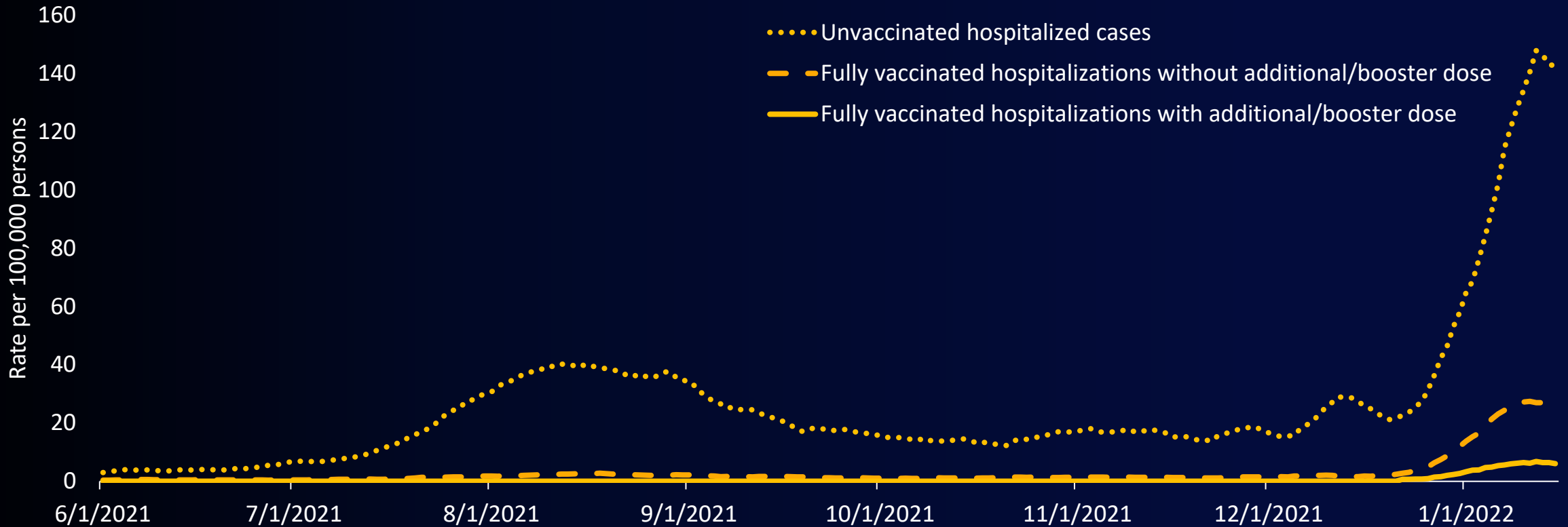
covid19.lacounty.gov

1/25/2022

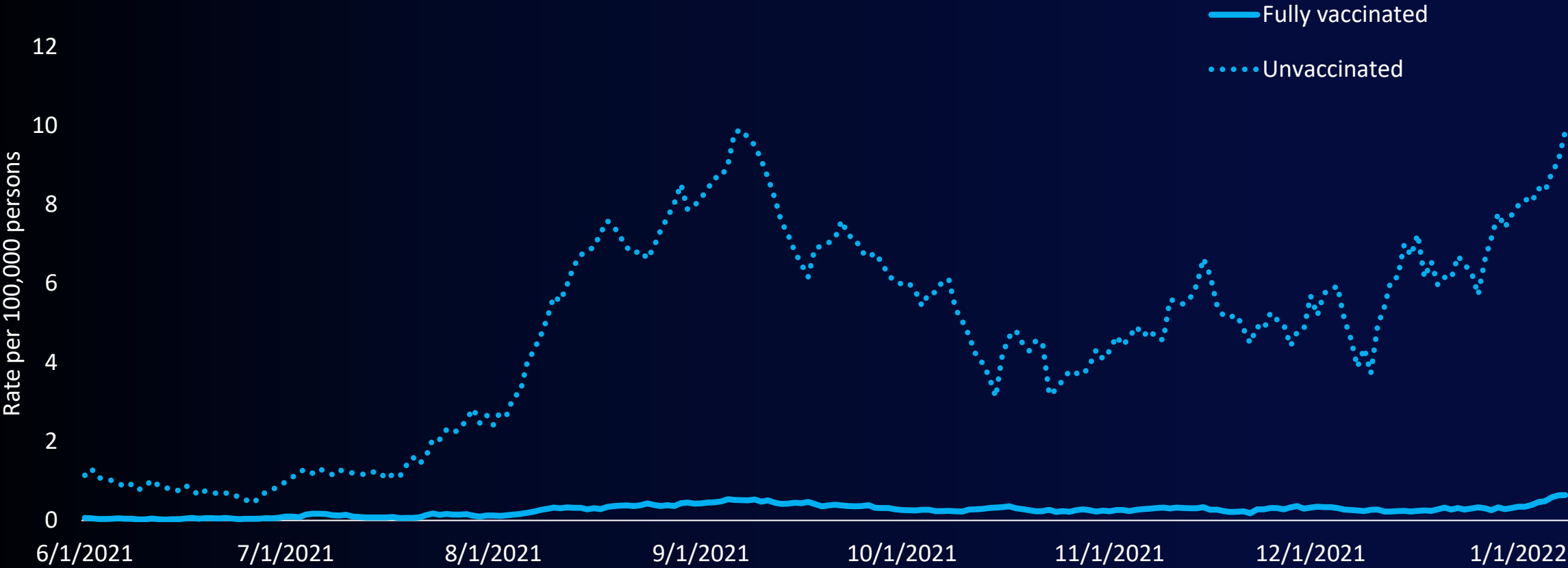
7-Day Cumulative Age-Adjusted Case Rates per 100,000 by Vaccination Status, including Additional/Booster Dose* June 1st, 2021 – January 15th, 2022



7-Day Cumulative Age-Adjusted Hospitalization Rates per 100,000 by Vaccination Status, including Additional/Booster Dose** June 1st, 2021 – January 15th, 2022



7-Day Cumulative Age-Adjusted Death Rates per 100,000 by Vaccination Status* June 1st, 2021 - January 8th, 2022



Relationship Between Vaccination Coverage and Covid Outcomes

Preliminary Data from USC Scientists* Evaluating December 1, 2021 – January 13, 2022

Actual Numbers	Model Projections	
	If everyone eligible had been vaccinated	If everyone eligible had been boosted
~711,000 cases	<ul style="list-style-type: none"> • 85% fewer cases • ~604,000 cases prevented 	<ul style="list-style-type: none"> • 95% fewer cases • ~680,000 cases prevented
~10,500 hospital admissions	<ul style="list-style-type: none"> • 87% fewer hospital admissions • ~9,300 hospitalizations prevented 	<ul style="list-style-type: none"> • 98% fewer hospital admissions • ~10,500 hospitalizations prevented



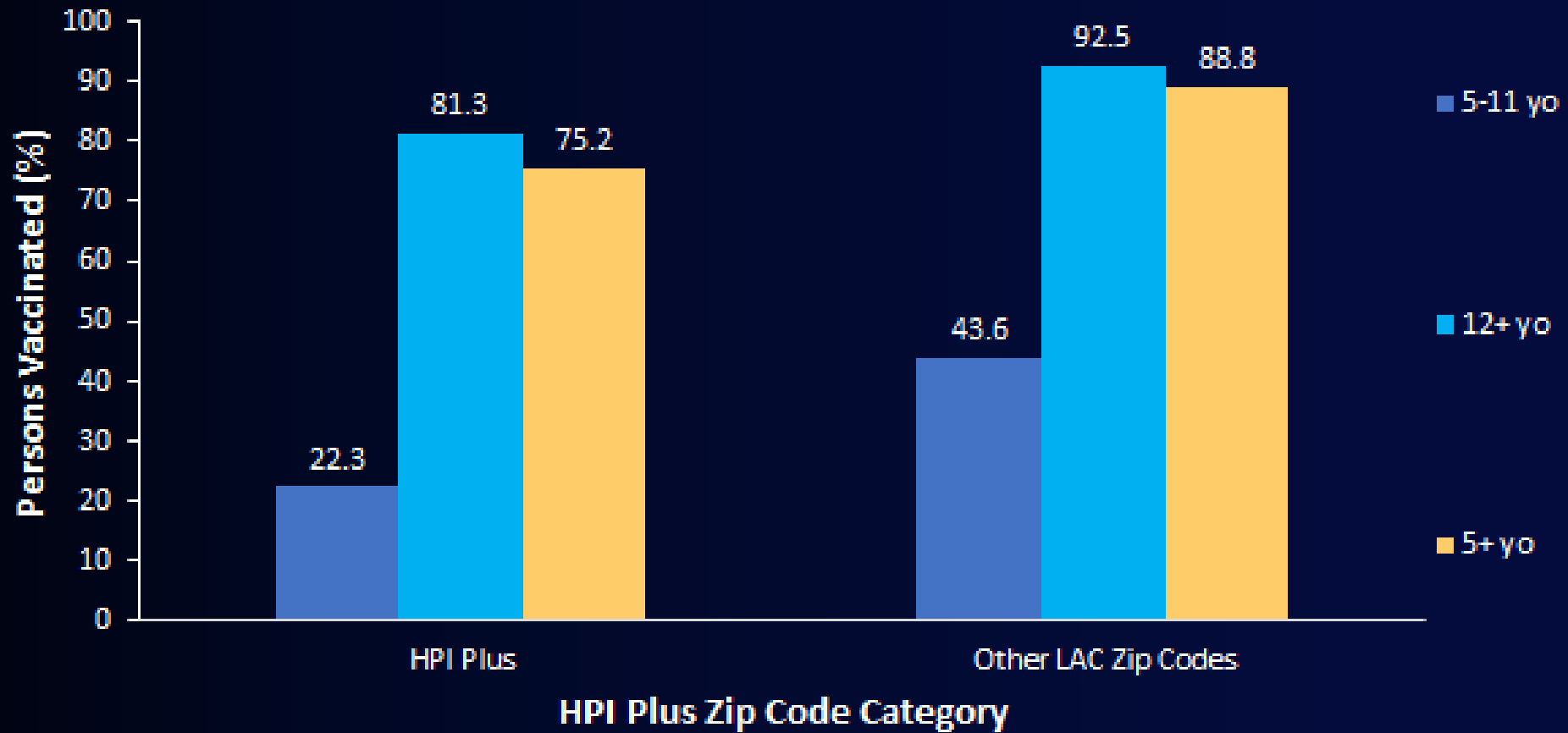
Proportion of LAC Residents Vaccinated by Age Group as of January 20th, 2022

	≥1 Dose	Fully Vaccinated	Vaccinated with an Additional/Booster Dose
% LAC Residents 65+	98%	89%	59%
% LAC Residents 5-11	30%	20%	<0.0%
% LAC Residents 12-17	83%	74%	13%
% LAC Residents 12+	86%	78%	35%
% LAC Residents 5+	81%	72%	32%
% of 10.3 million LAC residents	77%	69%	30%

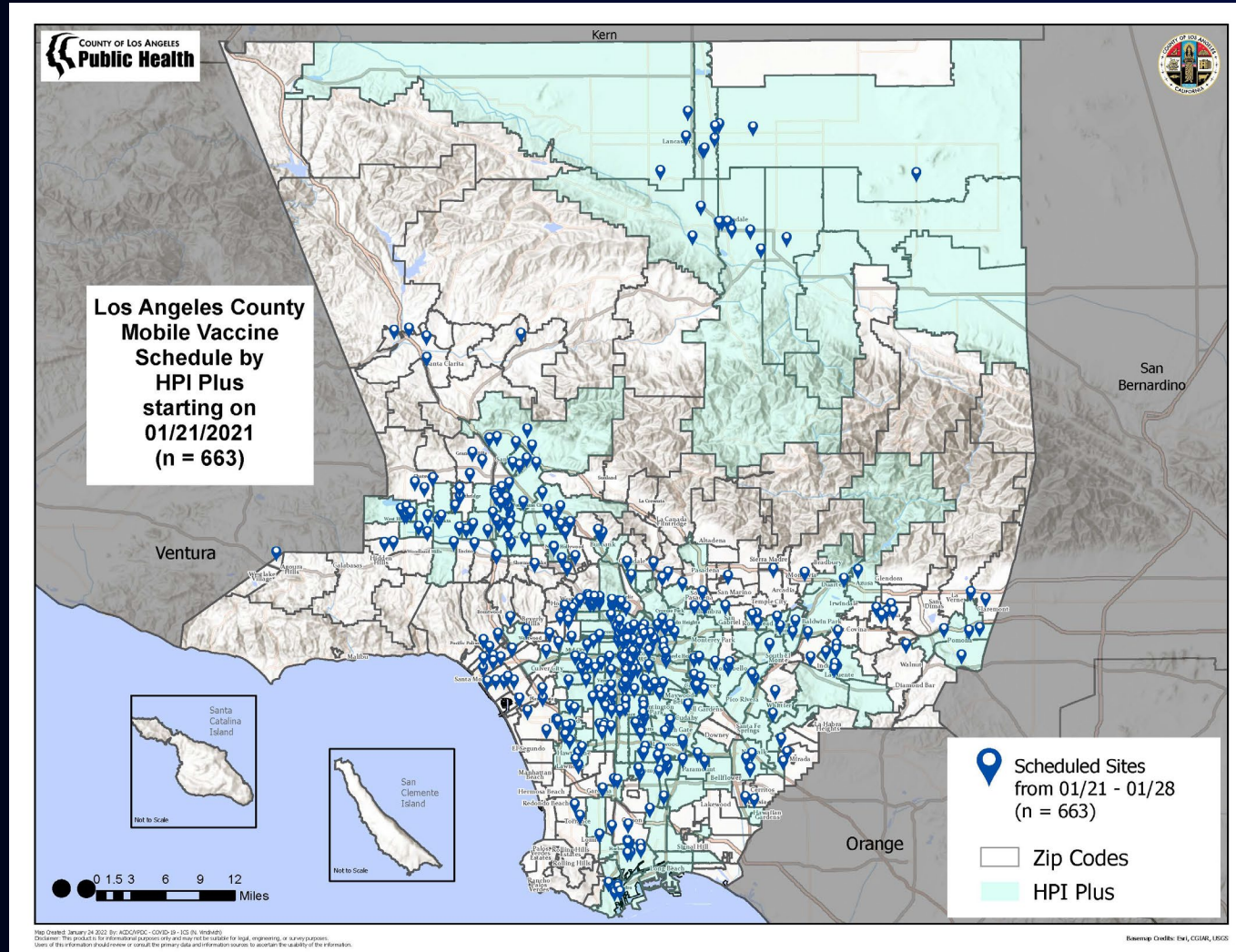
3,089,653 LAC residents have received additional/booster doses



Cumulative Percent of HPI Plus Population Vaccinated with 1+ Dose as of 1/16/2022



Mobile Vaccination Sites Currently Administering Adult and Pediatric Vaccines

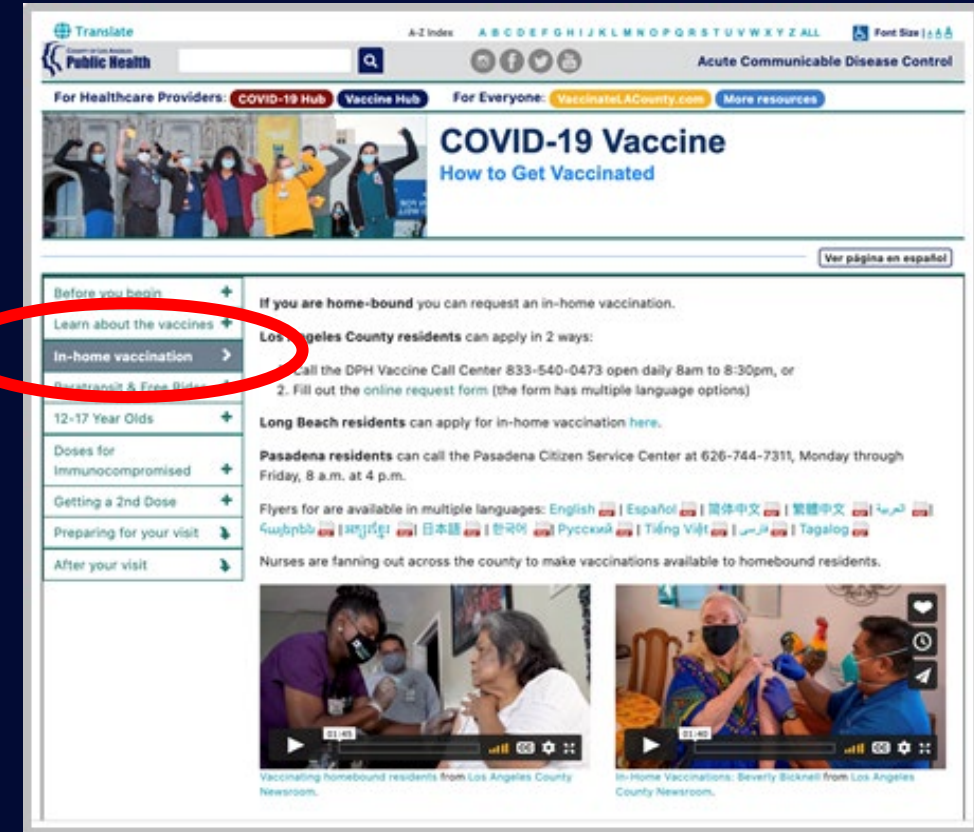


covid19.lacounty.gov

1/25/2022

Homebound Vaccination Program

- 12,571 total requests received by DPH for in-home vaccination
- 9,825 referrals contacted by provider
 - ~17% (1,686) were already vaccinated through another source
 - ~17% (1,669) were unable to reach after 3 call attempts
 - ~8% (828) refused, are deceased, out of jurisdiction, or cancelled for unknown reason
- 4,718 homebound individuals vaccinated
- 2,746 referrals with a pending contact/vaccination appointment
- If you are homebound, you can request an in-home vaccination. Los Angeles County residents can apply for in-home vaccination by:
 - visiting <https://tinyurl.com/drr4kh3k>
 - calling the DPH Vaccine Call Center at 833-540-0473 open daily 8am to 8:30pm

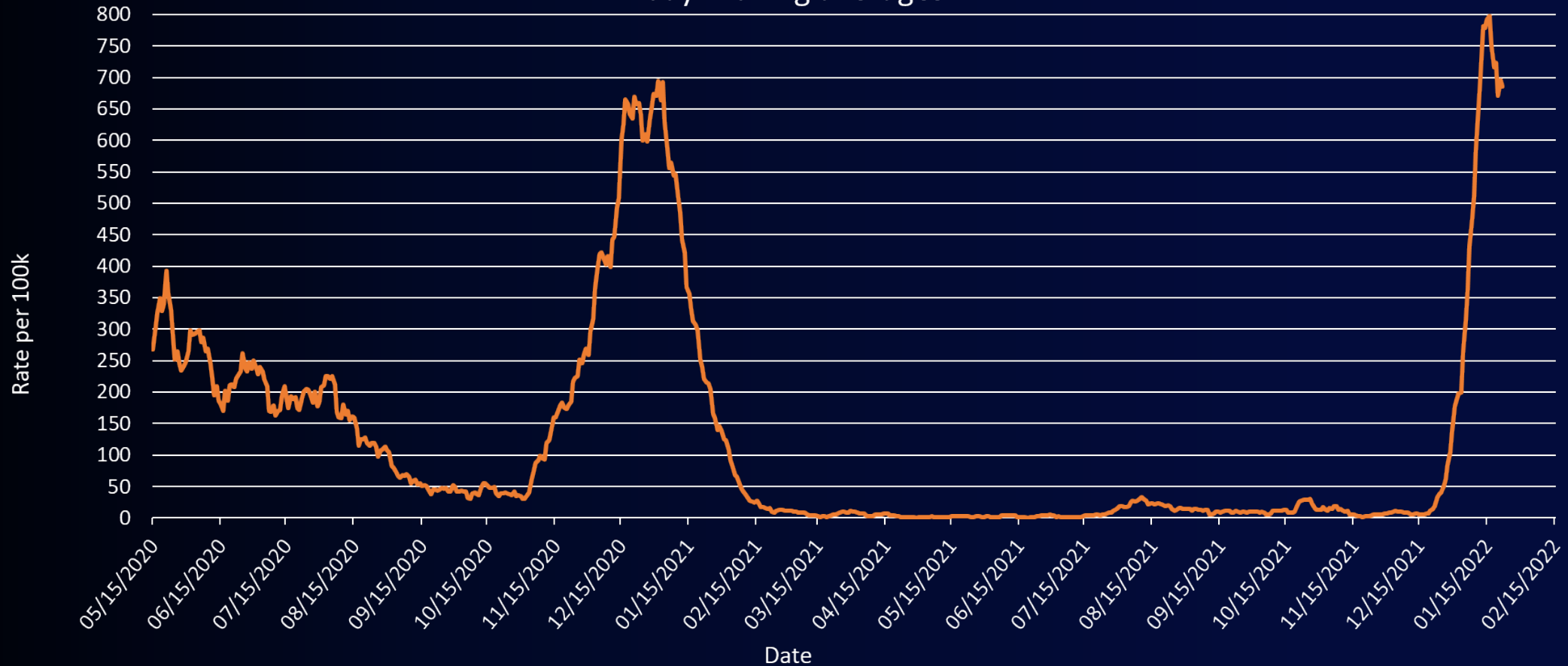


[covid19.lacounty.gov](https://www.covid19.lacounty.gov)

1/25/2022

SNF Resident cases since March 2020

Daily SNF Resident COVID Case Rate* per 100k
7-day moving averages



*Rate per 100,000 is calculated from a 7-day moving average of newly reported resident cases over the 7-day moving average of the daily variable resident census total for all SNFs in LA County. Data is sourced from the self-reported CDPH 123 daily survey data.

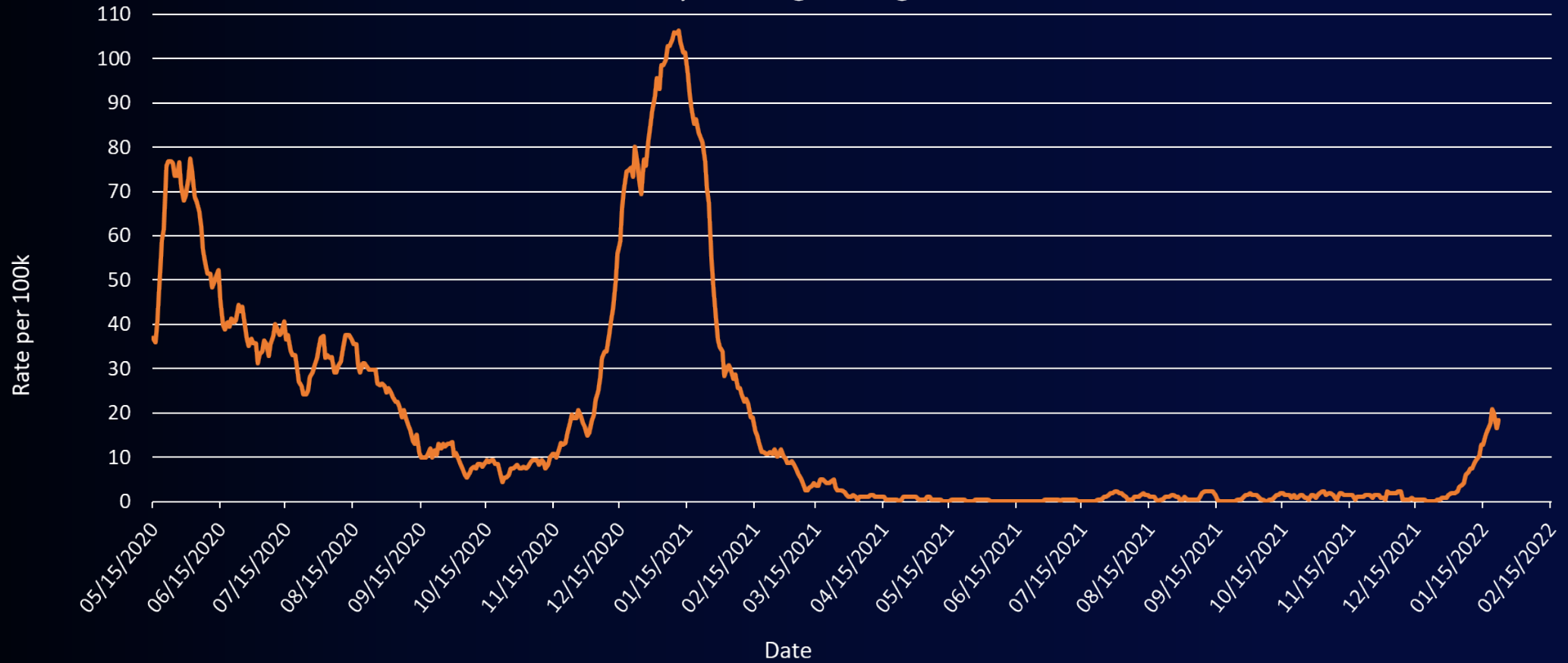


covid19.lacounty.gov

1/25/2022

SNF Resident deaths since March 2020

Daily SNF Resident COVID Mortality Rate per 100k
7-day moving averages

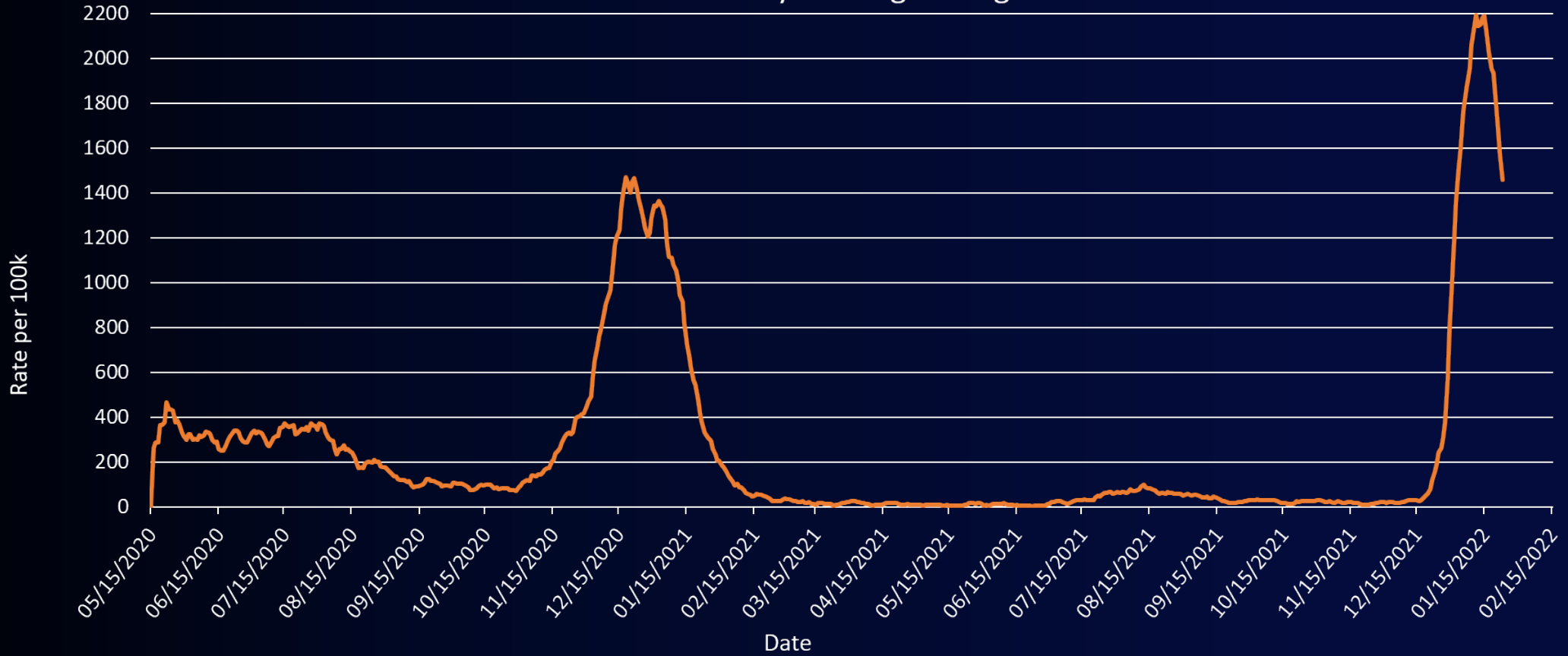


*Rate per 100,000 is calculated from a 7-day moving average of newly resident reported deaths over the 7-day moving average of the daily variable resident census total for all SNFs in LA County. Data is sourced from the self-reported CDPH 123 daily survey data.



SNF Staff cases since March 2020

Daily SNF Staff COVID Case Rate per 100k
7-day moving averages



*Rate per 100,000 is calculated from a 7-day moving average of newly reported staff cases over the 7-day moving average of the daily variable staff total for all SNFs in LA County. Data is sourced from the self-reported CDPH 123 daily survey data.

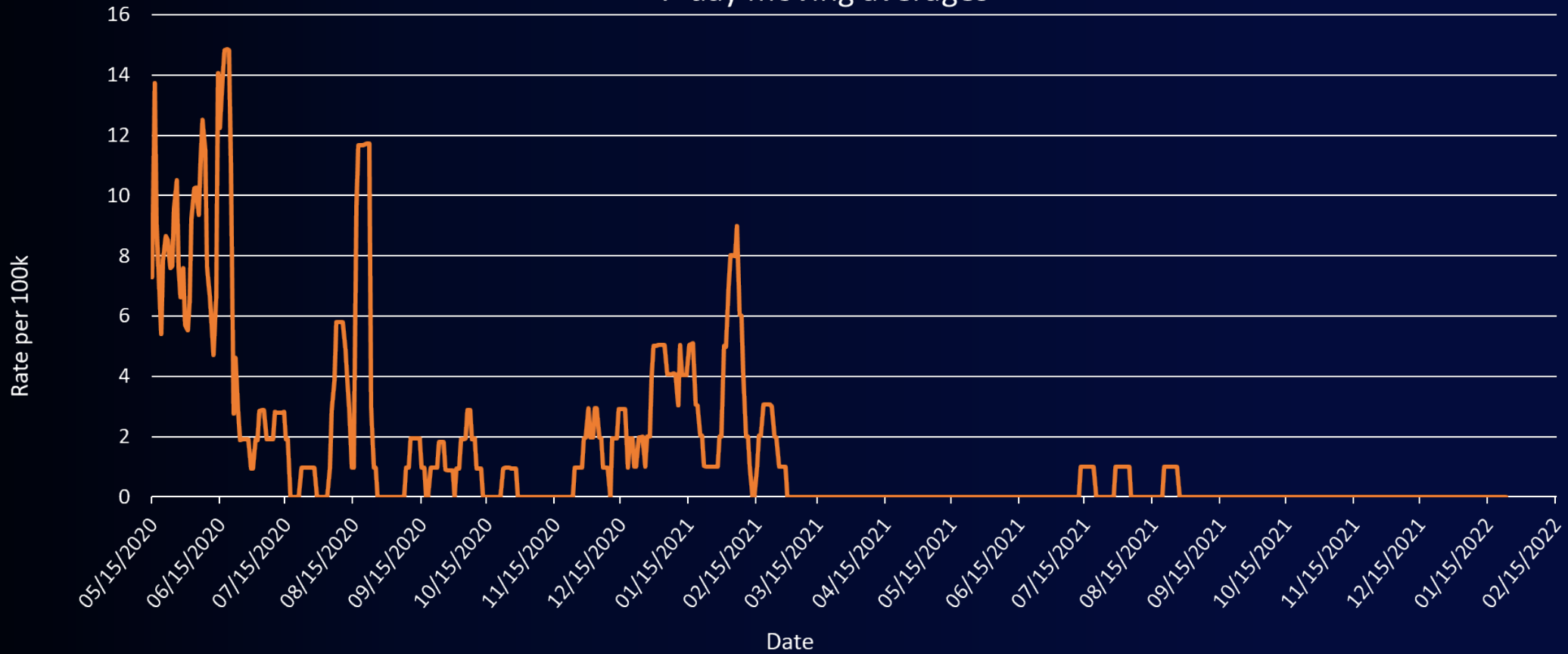


covid19.lacounty.gov

1/25/2022

SNF Staff deaths since March 2020

Daily SNF Staff COVID Mortality Rate per 100k
7-day moving averages



*Rate per 100,000 is calculated from a 7-day moving average of newly reported staff deaths over the 7-day moving average of the daily variable staff total for all SNFs in LA County. Data is sourced from the self-reported CDPH 123 daily survey data.

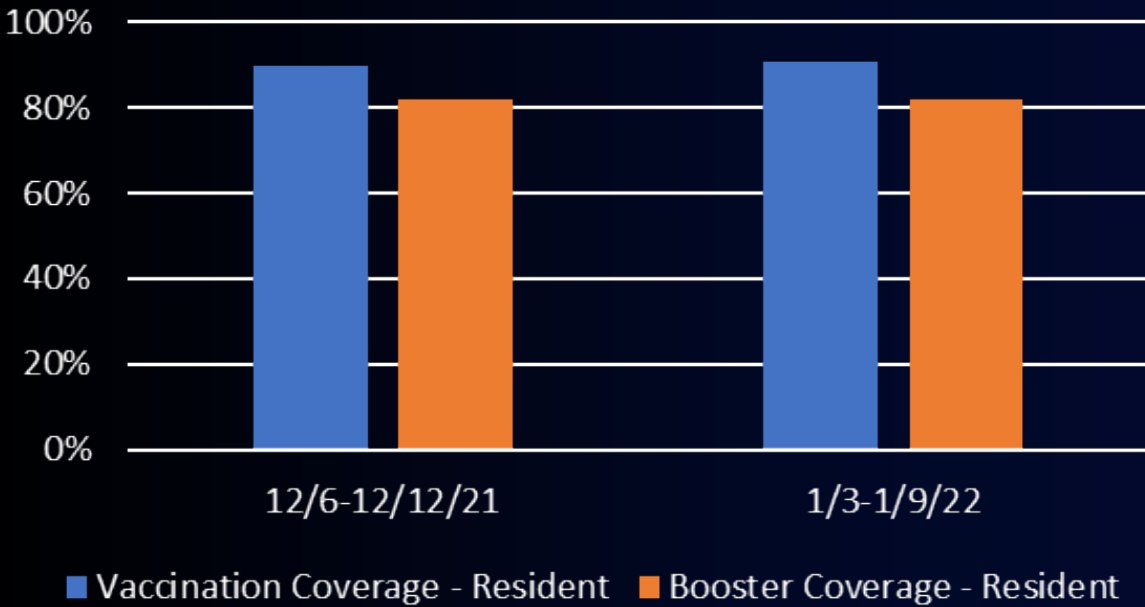


covid19.lacounty.gov

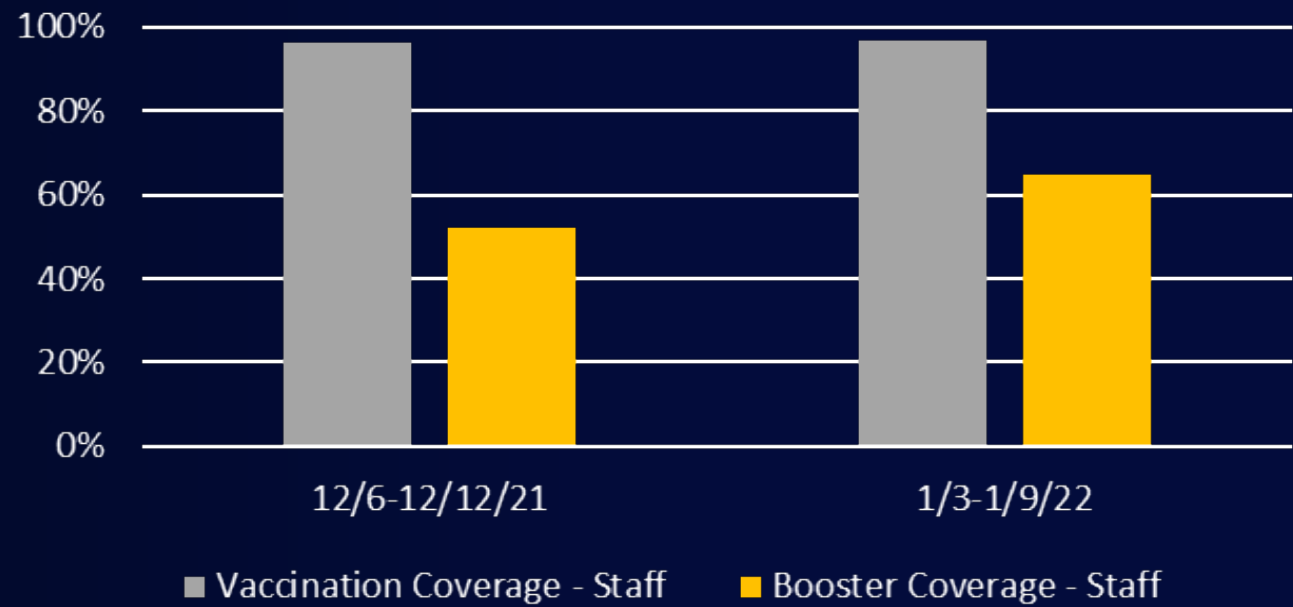
1/25/2022

SNF Vaccination and Booster Coverage

% of SNF Residents Vaccinated and Boosted



% of SNF Staff Vaccinated and Boosted



Safety During Surge: Reducing Exposure Risk

Less Risk

- Masking
- Distancing
- Vaccinated
- Outdoors
- Negative Test

More Risk

- Unmasked
- Crowding
- Unsure Vaccination Status
- Indoors
- No testing



Super Bowl LVI Public Health Safety Planning

➤ Partnership with NFL and SoFi Stadium

- NFL Experience at LA Convention Center
- NFL sponsored events (YouTube Theater, Crypto Arena, SoFi Stadium)
- Super Bowl Sunday at SoFi Stadium
- Supporting safety at community SB gatherings



➤ Mitigation Strategies

- Compliance with HOO and City of LA ordinance for vaccination verification
- Promoting vaccinations/boosters
- Access to vaccinations and testing
- Safety at venues (masking/infection control)
- Messaging: Excitement, Enjoyment, Safety

