

Los Angeles County Board of Supervisors

June 8, 2021

Set Item 1

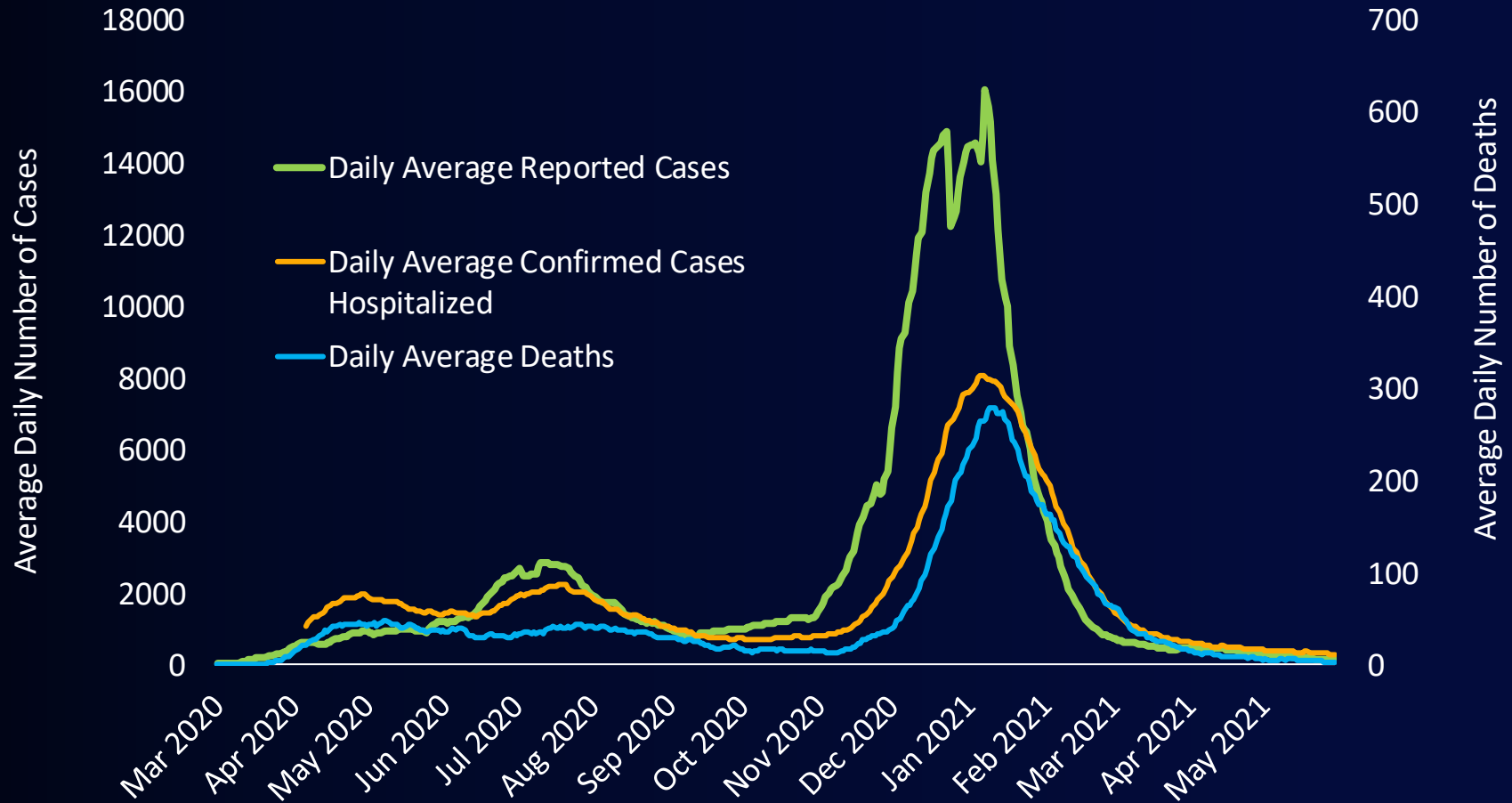
Barbara Ferrer, PhD, MPH, MEd
Director, Department of Public Health



covid19.lacounty.gov

6/8/2021

Daily Number of COVID-19 Cases and Hospitalizations by Episode Date and Deaths by Date of Death – March 1, 2020 to May 30, 2021



LA County's Current Status

Adjusted Cases (per 100K)	Positivity Rate	Positivity Rate Lowest HPI
0.7	0.4%	0.4%

LA County remains in the **Yellow** Tier.



COVID-19 Vaccine Update

As of June 4, 2021

Total Doses Administered	9,619,024
First Doses	5,501,512
Second Doses	4,117,512
LAC Residents with 1 Dose	5,400,962 – 65%
LAC Residents 16+ fully vaccinated	4,508,042 – 54%
LAC residents 65+ fully vaccinated	1,013,131 – 74%



Cumulative Percent of Population who have Received at Least 1 Dose of Vaccine, by Week and Age Group

Age Group	May 04, 2021	June 04, 2021	Relative % Increase
16-17	33.8	46.3	37.0%
18-29	44.6	51.8	16.1%
30-49	54.5	61.0	11.9%
50-64	65.0	70.1	7.9%
65-79	86.6	89.3	3.1%
80+	73.7	75.7	2.7%



Percent of Racial and Ethnic Groups' Age 16+ Population Who Have Received At Least 1 Dose of Vaccine As of June 4, 2021

Race/Ethnicity	# >=16 With At Least 1 Dose Vaccine	# Residents In >=16 Group	% >=16 With At Least 1 Dose Vaccine
Black/African American	288,738	687,786	42.0%
Latinx	1,916,279	3,820,286	50.2%
American Indian/Alaska Native *	11,926	20,310	58.7%
Asian	897,542	1,236,719	72.6%
White	1,492,096	2,362,512	63.2%
Native Hawaiian /Pacific Islander†	22,299	19,694	113.2%
Multi-Race†	79,220	--	--
Other†	543,041	--	--
Unknown	149,821	--	--
Total	5,400,962	8,325,496	64.9%

*Likely an overestimate due to inclusion of multiracial people

† Multi-Race and Other not calculated due to inaccurate estimates.

† NHOPI estimates not reliable due to high likelihood of inaccuracies



Percent of Racial and Ethnic Groups' Age 65+ Population Who Have Received At Least 1 Dose of Vaccine As of June 4, 2021

Race/Ethnicity	# >=65 With At Least 1 Dose Vaccine	# Residents In >=65 Group	% >=65 With At Least 1 Dose Vaccine
Black/African American	80,064	123,433	64.9%
Latinx	300,839	406,155	74.1%
American Indian/Alaska Native*	2,485	3738	66.5%
Asian	203,986	259,133	78.7%
White	435,083	556,057	78.2%
Native Hawaiian /Pacific Islander†	4,246	2833	149.9%
Multi-Race†	20,946	--	--
Other†	107,086	--	--
Unknown	23,468	--	--
Total	1,178,203	1,373,617	85.8%

*Likely an overestimate due to inclusion of multiracial people

† Multi-Race and Other not calculated due to inaccurate estimates.

† NHOPI estimates not reliable due to high likelihood of inaccuracies



Who isn't getting vaccinated?

Percent of LA County Residents With At Least 1 Dose of Vaccine as of May 28, 2021

	12-15	16-17	18-29	30-49	50-64	65-79	80+
Black/African American	10	21	24	35	49	66	59
Latinx	12	32	37	45	61	75	57
American Indian/Alaska Native	23	41	53	61	54	71	66
White	28	51	54	60	58	82	71
Asian	34	67	70	69	71	82	66



**Two-Week Case Incidence, Hospitalization, and Death Rates per
100,000 People and Cumulative Percent Vaccinated
by Race/Ethnicity
May 9 - May 22, 2021**

Race/ Ethnicity	Case Incidence Rate	Hospitalization Rate	Death Rate	% With ≥1 Vaccine
Black	37	7.98	0.74	41%
Latino	22	6.57	0.62	48%
White	17	4.18	0.34	63%
Asian	8	1.46	0.28	71%

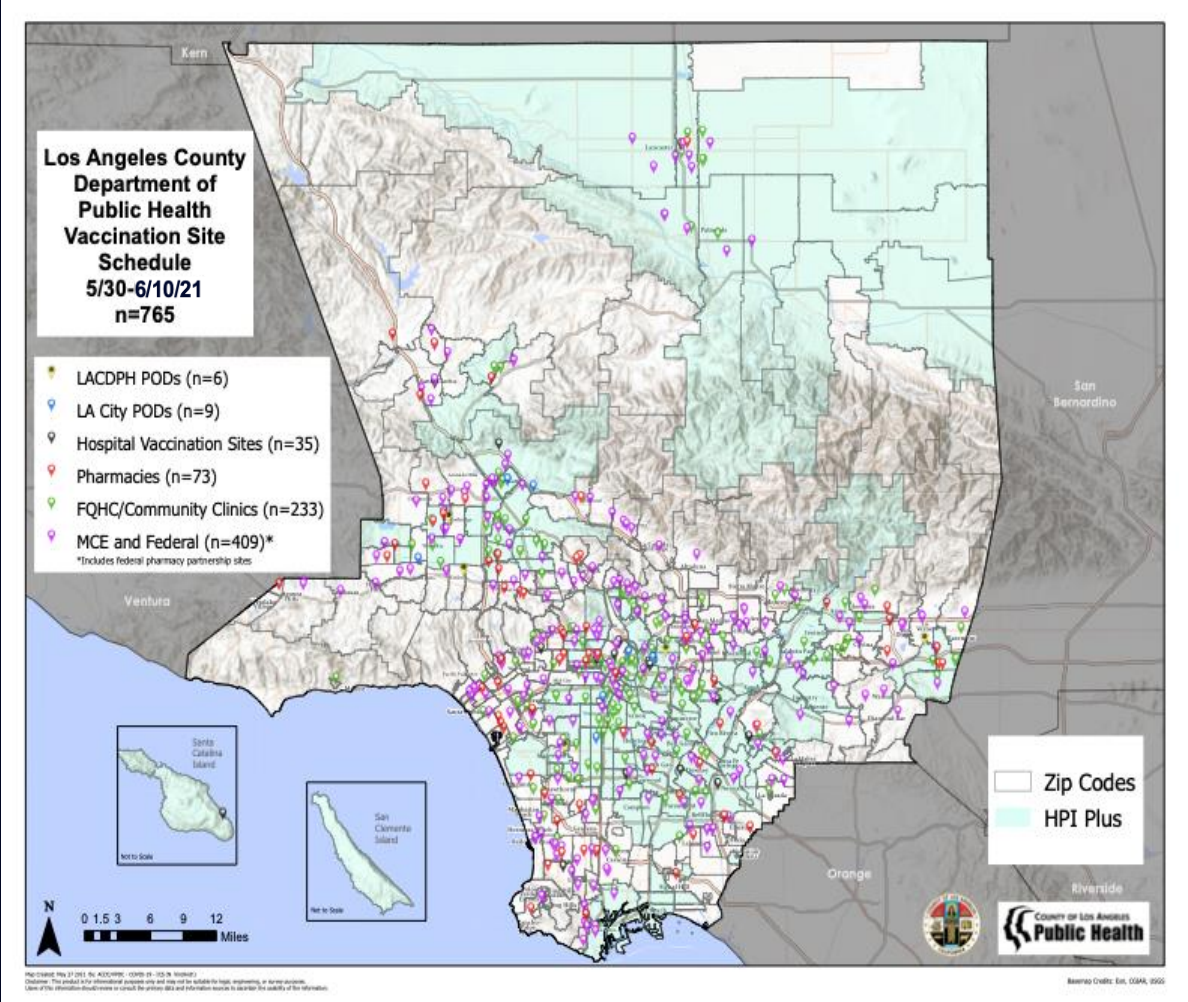


Strategies for Closing the Gap

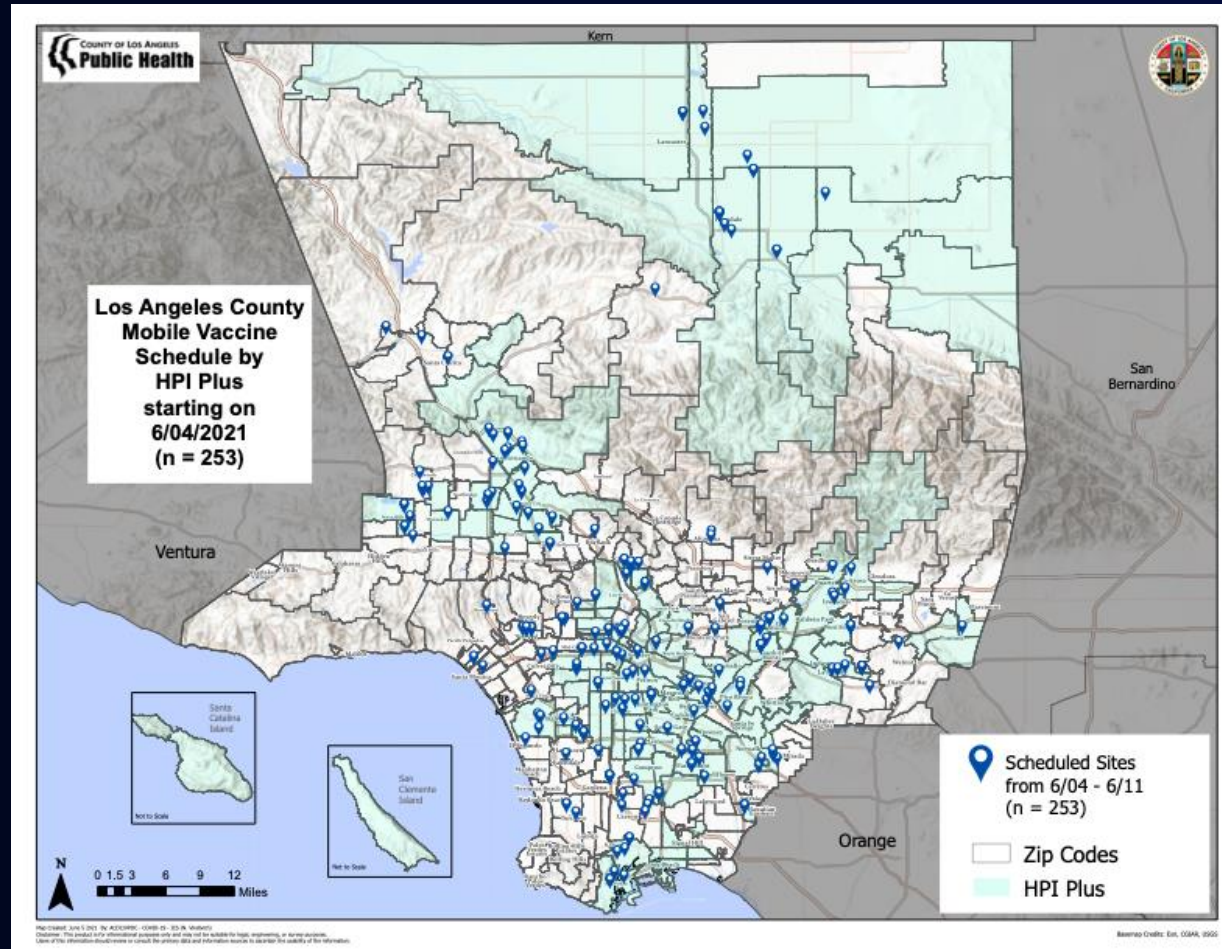
- **Improving Access to Vaccines**
 - Taking vaccines to where people are
 - Walk-ins with few verification requirements
 - Partnering with trusted providers (on-boarding local physicians/clinics)
- **Building Confidence in Vaccines**
 - Providing linguistically/culturally accurate information
 - Supporting trusted messengers (CHWs, FBOs, CBO's)
 - Transparency with data



Vaccination sites in LAC



Mobile Vaccination Units in LAC



covid19.lacounty.gov

6/8/2021

Translate A-Z Index A B C D E F G H I J K L M N O P Q R S T U V W X Y Z ALL Font Size | A A A

County of Los Angeles Public Health

Communications & Public Affairs

COVID-19 Home About COVID-19 Guidances Protection News Updates Help

COVID-19 VACCINE

Información en español

CLICK HERE TO LEARN MORE ABOUT:
VACCINATION SWEEPSTAKES
WIN LA KINGS OR LA GALAXY SEASON TICKETS!

How to Get Vaccinated

Residents with disabilities and no computer access can call 833-540-0400 between 8:00 am and 8:30 pm 7 days a week for assistance with appointments.

Learn How to Secure Your Vaccine Appointments

Translate A-Z Index A B C D E F G H I J K L M N O P Q R S T U V W X Y Z ALL Font Size | A A A

County of Los Angeles Public Health

Acute Communicable Disease Control

For Healthcare Providers: [COVID-19 Hub](#) [Vaccine Hub](#) For Everyone: [VaccinateLACounty.com](#)

COVID-19 Vaccine
How to Get Vaccinated

[Ver página en español](#)

Before you begin

- Learn about the vaccines +
- In-home vaccination +
- Paratransit & Free Rides +
- 12-17 Year Olds +
- Preparing for your visit →
- After your visit →

- The COVID-19 vaccine is free.
- Vaccines are available for everyone age 12 and over.
- You will not be asked about your immigration status when you get a vaccine.
- No appointment is needed at many locations.

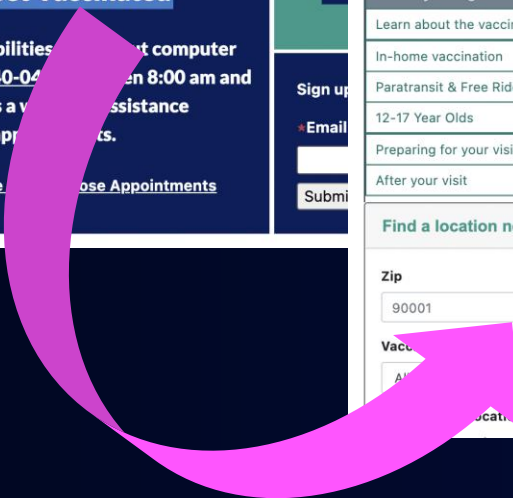
[Need Help?](#)

Find a location near you

Zip: Distance within:

Vaccine: Location hours: Location type:

Locations where an appointment is not needed



covid19.lacounty.gov

6/8/2021

Building Vaccine Confidence

- Vaccine Town Halls
- Partnerships with more than 125 FBOs
- Community Health Worker Outreach Initiative
- Thank You Gifts
- Siting at schools and parks



Preparing for June 15

- Elimination of most distancing and capacity limits and relaxed masking requirements
- Cal/OSHA modifications to the COVID prevention standards
- Exceptions: schools, childcare, camps, healthcare facilities, high-risk congregate settings, indoor mega events, public transit
- Public Health best practice guidance for sectors

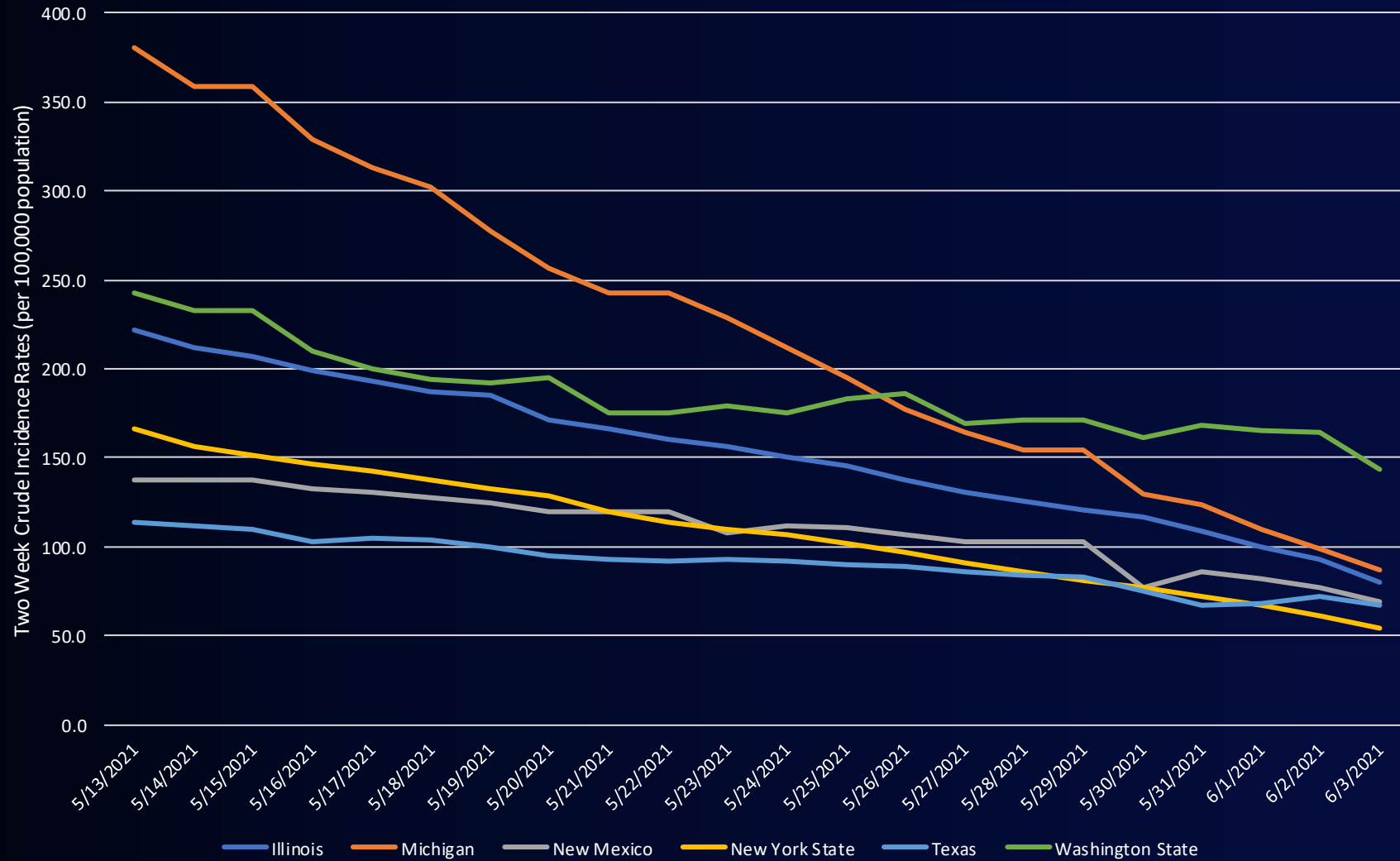


Cal/OSHA Workplace Standards Changes Through July 31st

Face Coverings	<p>Indoors: All workers must be masked regardless of vaccination status</p> <ul style="list-style-type: none">• except when alone or when all persons in a room are fully vaccinated and asymptomatic <p>Outdoors: All asymptomatic workers who are six feet or more away from others can be unmasked regardless of vaccination status</p> <ul style="list-style-type: none">• except at mega events (>10,000 attendees)
Physical Distancing	<p>Not required indoors and outdoors if employers provide respirators (e.g. N95 masks) to unvaccinated employees except during outbreaks</p>
Workplace Exclusion	<p>Fully vaccinated workers who do not have symptoms can go to work even after a close contact with a person infected with COVID-19</p>



Two Week Crude Incidence Rates of COVID-19 Cases by Selected Region, May 13, 2021 to June 3, 2021



covid19.lacounty.gov

6/8/2021

What can each of us do to get ready?

- ★ Get vaccinated if eligible
- ★ Review best practice guidance for businesses
- ★ Adhere to safety measures for specific activities and sectors (e.g., schools, daycare centers, camps, healthcare facilities, high risk congregate living facilities, mega events, public transit)

