



Los Angeles County

PROBATION REFORM AND IMPLEMENTATION TEAM

P.R.I.T. COMMUNITY MEETING

Probation Oversight Commission Composition and Criteria for Commissioners

February 13, 2019





Los Angeles County

PROBATION REFORM AND IMPLEMENTATION TEAM

Welcome and Overview

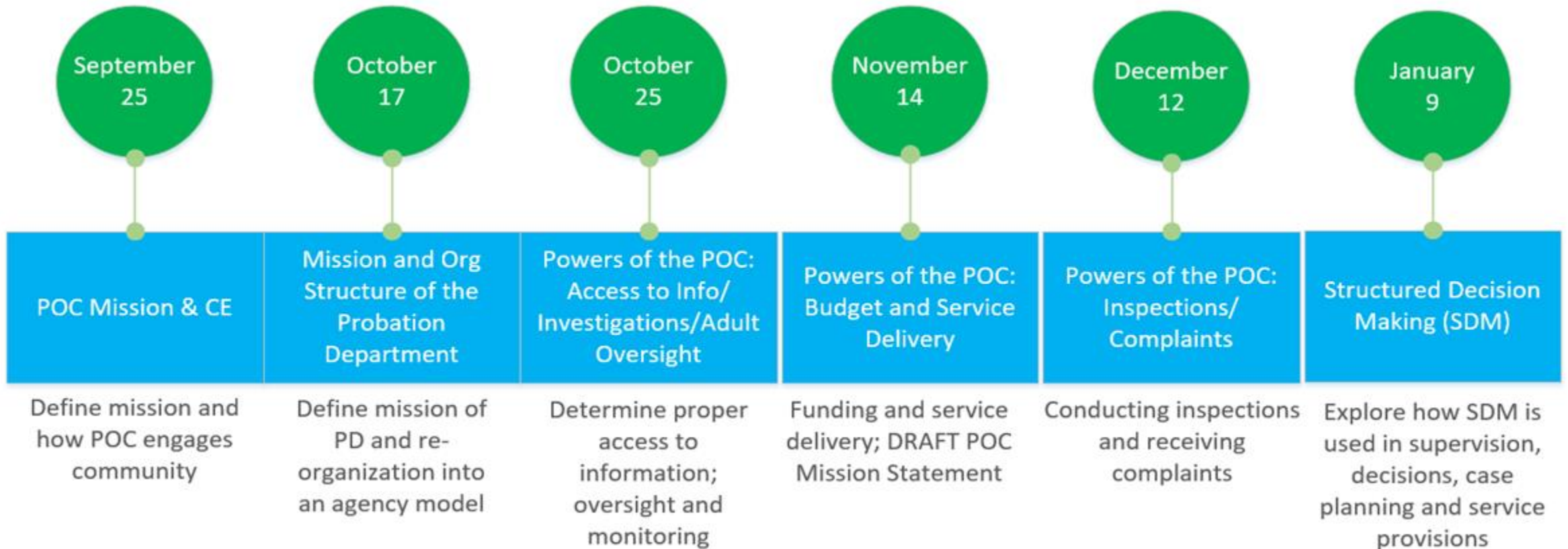




Los Angeles County

PROBATION REFORM AND IMPLEMENTATION TEAM

Where We've Been

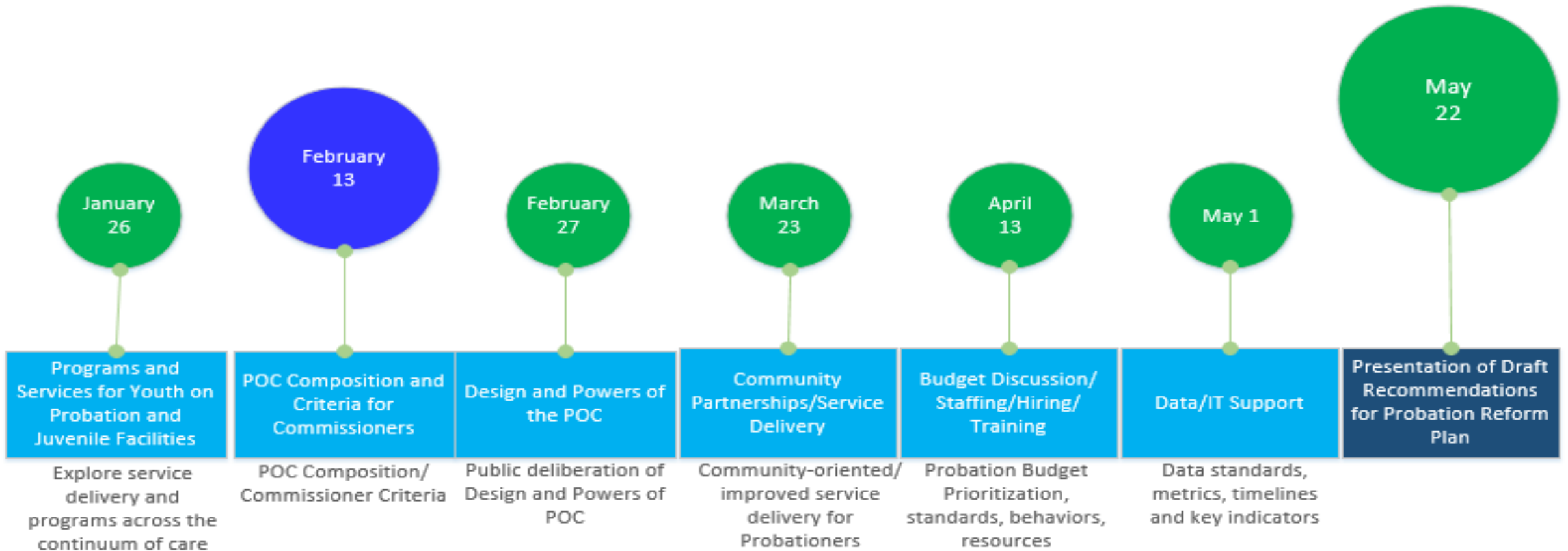




Los Angeles County

PROBATION REFORM AND IMPLEMENTATION TEAM

Where We Are Going





Los Angeles County

PROBATION REFORM AND IMPLEMENTATION TEAM

Overview of the Charge

Cyn Yamashiro, Probation Reform and Implementation Team



Los Angeles County

PROBATION REFORM AND IMPLEMENTATION TEAM

Reflections on Oversight of LA County Law Enforcement Agencies

Civilian Oversight Commissioner Observations and Opportunities

Priscilla Ocen, Sheriff's Civilian Oversight Commissioner (COC)



Los Angeles County

PROBATION REFORM AND IMPLEMENTATION TEAM

Reflections on Oversight of LA County Law Enforcement Agencies

COC Overview of Composition

Brian Williams, COC Executive Director



Los Angeles County

PROBATION REFORM AND IMPLEMENTATION TEAM

Reflections on Oversight of LA County Law Enforcement Agencies

Civilian Oversight Commissioner Observations and Opportunities

Sean Kennedy, Sheriff's Civilian Oversight Commissioner (COC)



Los Angeles County

PROBATION REFORM AND IMPLEMENTATION TEAM

Reflections on Oversight of LA County Law Enforcement Agencies

Community Reflections and Recommendations

Anthony Robles, YJC



Los Angeles County

PROBATION REFORM AND IMPLEMENTATION TEAM

Reflections on Oversight of LA County Law Enforcement Agencies

Community Reflections and Recommendations

Phal Suk, YJC



Los Angeles County

PROBATION REFORM AND IMPLEMENTATION TEAM

PRIT Questions and Answers



Los Angeles County

PROBATION REFORM AND IMPLEMENTATION TEAM

Comment Card Question

Question 1:

***What criteria do you recommend
for the POC Commissioners?***

***What would be lost if that
criteria were not established?***



Los Angeles County

PROBATION REFORM AND IMPLEMENTATION TEAM

Probation Oversight Commission Composition

Probation Commissioner Observations and Recommendations

Cyn Yamashiro, Probation Commissioner

Comparison Chart of Los Angeles Oversight Commissions

Name of Agency	Department Size	Department Budget	Commission Staff Size	Commission Budget	No. of Commissioners
Los Angeles Police Department	13,937	\$1.609B	15	\$3.3M	5
Sheriff's Civilian Oversight Commission	18,246	\$3.346B	9	**\$2M	9
Probation Oversight Commission	6,426	\$1.002B	**9	**\$2M	TBD

**Proposed/estimated numbers

PROPOSED STAFFING FOR THE PROBATION OVERSIGHT COMMISSION

Positions	Number	Estimated Salary and Benefit Costs
Executive Director	1	\$280,000
Community Information Officer	1	\$184,000
Principal Analyst	1	\$173,000
Senior Analyst	2	\$290,000
Board Specialist	1	\$69,000
Data Scientist	1	\$117,000
Paralegal	1	\$155,000
Management Secretary	1	\$128,000
TOTAL	9	\$1,396,000



Los Angeles County

PROBATION REFORM AND IMPLEMENTATION TEAM

PRIT Questions and Answers



Los Angeles County

PROBATION REFORM AND IMPLEMENTATION TEAM

Comment Card Question

Question 2:

***What are your thoughts about
the composition of the POC?***



Los Angeles County

PROBATION REFORM AND IMPLEMENTATION TEAM

Closing and Next Steps





Los Angeles County

PROBATION REFORM AND IMPLEMENTATION TEAM

***Thank you for participating.
We look forward to reading your comments.
The next public meeting will be held on
February 27, 2019, at the Hall of Administration***

Topic: Design and Powers Probation Oversight Commission (Deliberation)





Los Angeles County

PROBATION REFORM AND IMPLEMENTATION TEAM

Upcoming PRIT Community Meeting

Wednesday, February 27, 2019: Design and Powers of the POC (Deliberation)

Contact PRIT Public Information Officer

➤ Robert Battles: rbattles@prt.lacounty.gov

Visit our social media pages: #PRIT & #LACountyProbationReform

- Facebook: @lacountyprit
- Twitter: @lacprit1
- Instagram @prit_lacounty

Visit our PRIT website: www.prit.lacounty.gov