



COUNTY OF LOS ANGELES

DEPARTMENT OF PUBLIC WORKS

"To Enrich Lives Through Effective and Caring Service"

900 SOUTH FREMONT AVENUE
ALHAMBRA, CALIFORNIA 91803-1331
Telephone: (626) 458-5100
www.ladpw.org

ADDRESS ALL CORRESPONDENCE TO:
P.O. BOX 1460
ALHAMBRA, CALIFORNIA 91802-1460

June 2, 2005

IN REPLY PLEASE
REFER TO FILE: PD-3

The Honorable Board of Supervisors
County of Los Angeles
383 Kenneth Hahn Hall of Administration
500 West Temple Street
Los Angeles, CA 90012-2756

Dear Supervisors:

**DRAINAGE BENEFIT ASSESSMENT
AREA NOS. 5, 8, 9, 13, 15, 17, 22, 23, 25, 26, AND 28
RESOLUTIONS DETERMINING AND IMPOSING ANNUAL ASSESSMENTS
VICINITY OF QUARTZ HILL
SUPERVISORIAL DISTRICT 5
3 VOTES**

IT IS RECOMMENDED THAT YOUR BOARD:

1. Direct the Executive Officer to file the enclosed Engineer's Reports (Appendix A) prepared by the Acting Director of Public Works describing services provided under Drainage Benefit Assessment Area Nos. 5, 8, 9, 13, 15, 17, 22, 23, 25, 26, and 28; the affected parcels; the cost of the services; and the proposed assessments.
2. Find and determine the cost of the services financed by the assessments to be as set forth in the enclosed reports by the Acting Director of Public Works.
3. Find that the enclosed Resolutions Determining and Imposing Assessments for Drainage Benefit Assessment Area Nos. 5, 8, 9, 13, 15, 17, 22, 23, 25, 26, and 28 for Fiscal Year 2005-06 are being adopted for the purpose of meeting operational expenses and are, therefore, exempt from the California Environmental Quality Act pursuant to Section 21080(b)(8) of the Public Resources Code and Section 15273 of Title 14 of the California Code of Regulations (the State CEQA guidelines); and

4. Adopt the enclosed Resolutions (Appendix B) Determining and Imposing Annual Assessments for Drainage Benefit Assessment are Nos. 5, 8, 9, 13, 15, 17, 22, 23, 25, 26, and 28 for Fiscal Year 2005-06.

PURPOSE/JUSTIFICATION OF RECOMMENDED ACTION

The adoption of the enclosed Resolution is necessary to determine and levy the annual assessments for 2005 for Drainage Benefit Assessment Are (DBAA) Nos. 5, 8, 9, 13, 15, 17, 22, 23, 25, 26, and 28.

DBAA Nos. 5, 8, 9, 13, 15, 17, 22, 23, 25, 26, and 28 were formed by your Board on February 12, 1985; May 12, 1987; May 19, 1986; November 21, 1986; January 28, 1988; March 30, 1989; February 14, 1989; June 22, 1989; February 15, 1990; September 27, 1990; and January 17, 1991, respectively. These DBAAs were formed pursuant to the Benefit Assessment Act of 1982 to finance the maintenance, operation, and improvement of drainage facilities constructed and dedicated as required for the recordation of various tracts in the vicinity of Quartz Hill.

These drainage facilities are located outside the boundaries of the Los Angeles County Flood Control District and are ineligible for the expenditure of Los Angeles County Flood Control District funds. Accordingly, these assessments constitute an essential source of revenue for the continued maintenance, operation, and improvement of these drainage facilities.

Implementation of Strategic Plan Goals

This action is consistent with the County's Strategic Plan Goal of Fiscal Responsibility as these drainage benefit assessments provide sufficient funds to continue maintaining the flood control systems in a safe and effective operating condition. It also satisfies the goal of Service Excellence since maintaining the flood control facilities provide flood protection to residents, which improves the quality of life in the County.

FISCAL IMPACT/FINANCING

There is no impact to the General Fund as a result of this action. The annual assessments for Fiscal Year 2005-06 are proposed to remain the same as those assessed in Fiscal Year 2004-05. The assessments range between \$50 and \$341 per benefit unit (single-family residence) depending on the number of properties assessed and necessary level of maintenance in each DBAA. The total assessments to be collected for the 11 DBAAs is equal to \$86,176.47.

Sufficient funds were available in the current DBAA's fiscal year budget to prepare the Engineer's Report for each DBAA.

FACTS AND PROVISIONS/LEGAL REQUIREMENTS

The Benefit Assessment Act of 1982 authorizes your Board to determine and impose the annual assessments by either resolution or ordinance. Further, as the amount of the assessments are not being increased, they are exempt from the requirement of a public hearing and the other procedures and approval process of Article XIII D of the State Constitution (Proposition 218). See Constitution, Art. 13D, Section 5(a) and Government Code Section 53753.5.

The enclosed Resolutions Determining and Imposing Annual Assessments have been approved as to form by County Counsel.

The annual assessments cover the maintenance, operation, and improvement costs of drainage facilities required for the protection of area residences and businesses.

ENVIRONMENTAL DOCUMENTATION

As discussed above, the annual assessments, if adopted, will be used to finance the operation, maintenance, and improvement costs of the flood control and drainage facilities serving the referenced DBAAs. Accordingly, the enclosed Resolutions are being adopted for the purpose of meeting operational expenses of the County, and are, therefore, exempt from the California Environmental Quality Act pursuant to Section 21080(b)(8) of the Public Resources Code and Section 15273 of Title 14 of the California Code of Regulations (the State CEQA guidelines).

IMPACT ON CURRENT SERVICES (OR PROJECTS)

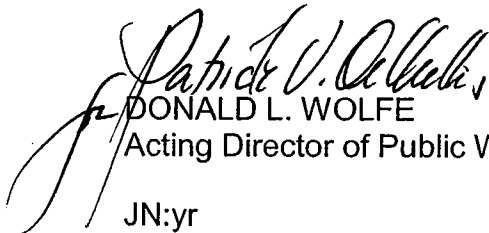
If the assessments are not approved, it is anticipated that the County will be unable to maintain the facilities at current levels.

The Honorable Board of Supervisors
June 2, 2005
Page 4

CONCLUSION

Please return two approved copies of this letter and one certified copy of each adopted Resolution to Public Works.

Respectfully submitted,


DONALD L. WOLFE
Acting Director of Public Works

JN:yr

C051584
P:\PDPUB\EP&A\FCBA & CI UNIT\DBAA\ANNUAL REPORT\2005-06\DBAA BL.DOC

Enc.

cc: Chief Administrative Office, County Counsel

Appendix A

Drainage Benefit Assessment Areas Engineer's Reports 2005

Engineer's Report

Annual Benefit Assessment
(Pursuant to the Benefit Assessment Act of 1982)

Drainage Benefit Assessment Area No. 5
Tract No. 36395 and
Tentative Tract No. 46543



Prepared By
Donald L. Wolfe
Acting Director Of Public Works

Programs Development Division
P.O. Box 1460
Alhambra, Ca 91802-1460

May 2005

1. Description of the Services

The proposed services involve the maintenance, operation, and improvements of drainage facilities constructed for Tract No. 36395 and Tentative Tract No. 46543. The facilities are located at Avenue M-4 and Shain Lane in Quartz Hill. They consist of a retention basin, outlet structure, block wall, fencing, gates, catch basins, and manholes.

Maintenance, operation, and improvement may include, but are not limited to:

- a. Periodic inspection and evaluation of the facilities.
- b. Periodic clean out of catch basins.
- c. Weed control, insect control, and removal of vegetation and litter as needed.
- d. Periodic pumping of the basin and responding to complaints by residents.
- e. Repair of block wall and gates as needed.
- f. Any other maintenance work needed to ensure the facilities operate properly.

The assessment to be levied for Fiscal Year 2005-06 is \$11,036.

2. Description of Each Parcel

Drainage Benefit Assessment Area No. 5 is comprised of Lots 1 to 79 of Tract No. 36395, recorded in Book 1041, pages 12 to 17, and Lot 105 of Tract No. 11760 in Book 216, pages 1 to 4, inclusive of maps in the office of the Registrar-Recorder.

3. Basis and Schedule of Benefits

The basis of benefit was determined to be a buildable parcel, i.e., 1 buildable parcel = 1 benefit unit. There are 89 buildable parcels in Drainage Benefit Assessment Area No. 5. Assessor's Parcel No. 3101-035-900 is occupied by the retention basin and is not assessed.

The schedule of benefit is as follows:

$$\$11,036/89 = \$124 \text{ per unit}$$

4. Proposed Assessment for Each Parcel

The following list indicates the benefit units and the assessment amount for each parcel.

DRAINAGE BENEFIT ASSESSMENT AREA NO. 5

<u>Assessor Parcel No.</u>	<u>Benefit Units</u>	<u>Proposed Assessment</u>
3101-035-007	1	\$ 124
3101-035-008	1	\$ 124
3101-035-009	1	\$ 124
3101-035-010	1	\$ 124
3101-035-011	1	\$ 124
3101-035-012	1	\$ 124
3101-039-003	1	\$ 124
3101-039-004	1	\$ 124
3101-039-005	1	\$ 124
3101-039-006	1	\$ 124
3101-039-007	1	\$ 124
3101-039-008	1	\$ 124
3101-039-009	1	\$ 124
3101-039-010	1	\$ 124
3101-039-011	1	\$ 124
3101-039-012	1	\$ 124
3101-039-013	1	\$ 124
3101-039-014	1	\$ 124
3101-039-015	1	\$ 124
3101-039-016	1	\$ 124
3101-039-017	1	\$ 124
3101-039-018	1	\$ 124
3101-039-019	1	\$ 124
3101-039-020	1	\$ 124
3101-039-021	1	\$ 124
3101-039-022	1	\$ 124
3101-039-023	1	\$ 124
3101-039-024	1	\$ 124
3101-039-025	1	\$ 124
3101-039-026	1	\$ 124
3101-039-027	1	\$ 124
3101-039-028	1	\$ 124
3101-039-029	1	\$ 124
3101-039-030	1	\$ 124
3101-039-031	1	\$ 124
3101-039-032	1	\$ 124
3101-039-033	1	\$ 124
3101-039-034	1	\$ 124
3101-039-035	1	\$ 124
3101-039-036	1	\$ 124
3101-039-037	1	\$ 124

<u>Assessor Parcel No.</u>	<u>Benefit Units</u>	<u>Proposed Assessment</u>
3101-039-038	1	\$ 124
3101-039-039	1	\$ 124
3101-039-040	1	\$ 124
3101-039-041	1	\$ 124
3101-039-042	1	\$ 124
3101-039-043	1	\$ 124
3101-039-044	1	\$ 124
3101-039-045	1	\$ 124
3101-035-013	1	\$ 124
3101-035-014	1	\$ 124
3101-035-015	1	\$ 124
3101-035-016	1	\$ 124
3101-035-017	1	\$ 124
3101-035-018	1	\$ 124
3101-035-019	1	\$ 124
3101-035-020	1	\$ 124
3101-035-021	1	\$ 124
3101-035-022	1	\$ 124
3101-035-023	1	\$ 124
3101-035-024	1	\$ 124
3101-035-025	1	\$ 124
3101-035-026	1	\$ 124
3101-035-027	1	\$ 124
3101-035-028	1	\$ 124
3101-035-029	1	\$ 124
3101-035-030	1	\$ 124
3101-035-031	1	\$ 124
3101-035-032	1	\$ 124
3101-035-033	1	\$ 124
3101-035-034	1	\$ 124
3101-035-035	1	\$ 124
3101-035-036	1	\$ 124
3101-035-037	1	\$ 124
3101-035-038	1	\$ 124
3101-035-900	0	\$ 0
3101-035-039	1	\$ 124
3101-035-040	1	\$ 124
3101-035-041	1	\$ 124
3101-035-001	<u>11</u>	<u>\$1,364</u>
TOTALS	89	\$11,036

Engineer's Report

Annual Benefit Assessment
(Pursuant to the Benefit Assessment Act of 1982)

Drainage Benefit Assessment Area No. 8
Tract No. 43545



Prepared By
Donald L. Wolfe
Acting Director Of Public Works

Programs Development Division
P.O. Box 1460
Alhambra, Ca 91802-1460

May 2005

1. Description of the Services

The proposed services involve the maintenance, operation, and improvement of drainage facilities constructed for Tract No. 43545 near Avenue K and 45th Street West in the vicinity of Quartz Hill. The facilities consist of a detention basin, inlet structure, block wall, fencing, and gates.

Maintenance, operation, and improvement may include, but are not limited to:

- a. Periodic inspection and evaluation of facilities.
- b. Weed control, insect control, and removal of vegetation and litter as needed.
- c. Periodic pumping of the basin and responding to complaints by residents.
- d. Repair of block wall and gates as needed.
- e. Any other maintenance work needed to ensure the facilities operate properly.

The assessment to be levied in Fiscal Year 2005-06 is \$2,366.

2. Description of Each Parcel

Drainage Benefit Assessment Area No. 8 is presently comprised of Lots 1 through 28 of Tract No. 43545, recorded in Book 1068, pages 73 to 76 of maps in the office of the Registrar-Recorder.

3. Basis and Schedule of Benefit

The basis of benefit was determined to be a buildable parcel, i.e., 1 buildable parcel = 1 benefit unit. There are 28 buildable parcels in Drainage Benefit Assessment Area No. 8. The detention basin is located on a portion of Assessor's Parcel No. 3153-040-023.

Thus, the schedule of benefit is as follows:

$$\$2,366/28 = \$84.50 \text{ per unit}$$

4. Proposed Assessment for Each Parcel

The following list indicates the benefit units and the assessment for each parcel.

DRAINAGE BENEFIT ASSESSMENT AREA NO. 8

<u>Assessor Parcel No.</u>	<u>Benefit Units</u>	<u>Proposed Assessment</u>
3153-040-001	1	\$ 84.50
3153-040-002	1	\$ 84.50
3153-040-003	1	\$ 84.50
3153-040-004	1	\$ 84.50
3153-040-005	1	\$ 84.50
3153-040-006	1	\$ 84.50
3153-040-007	1	\$ 84.50
3153-040-008	1	\$ 84.50
3153-040-009	1	\$ 84.50
3153-040-010	1	\$ 84.50
3153-040-011	1	\$ 84.50
3153-040-012	1	\$ 84.50
3153-040-013	1	\$ 84.50
3153-040-014	1	\$ 84.50
3153-040-015	1	\$ 84.50
3153-040-016	1	\$ 84.50
3153-040-017	1	\$ 84.50
3153-040-018	1	\$ 84.50
3153-040-019	1	\$ 84.50
3153-040-020	1	\$ 84.50
3153-040-021	1	\$ 84.50
3153-040-022	1	\$ 84.50
3153-040-023	1	\$ 84.50
3153-040-024	1	\$ 84.50
3153-040-025	1	\$ 84.50
3153-040-026	1	\$ 84.50
3153-040-027	1	\$ 84.50
3153-040-028	<u>1</u>	<u>\$ 84.50</u>
TOTAL	28	\$2,366.00

Engineer's Report

Annual Benefit Assessment
(Pursuant to the Benefit Assessment Act of 1982)

Drainage Benefit Assessment Area No. 9
Tract No. 44330



Prepared By
Donald L. Wolfe
Acting Director Of Public Works

Programs Development Division
P.O. Box 1460
Alhambra, Ca 91802-1460

May 2005

1. Description of Services

The proposed services involve the maintenance, operation, and improvement of drainage facilities constructed for Tract No. 44330. The facilities are located at Avenue L-4 and 62nd Street West in Quartz Hill. They consist of a retention basin, outlet structure, catch basins, fencing, gate, and access road.

Maintenance, operation, and improvement may include, but are not limited to:

- a. Periodic inspection and evaluation of the facilities.
- b. Periodic clean out of catch basins.
- c. Weed control, insect control, and removal of vegetation and litter as needed.
- d. Periodic pumping of the basin and responding to complaints by residents.
- e. Repair of gate as needed.
- f. Any other maintenance work needed to ensure the facilities operate properly.

The estimated maintenance cost for Fiscal Year 2005-06 is \$12,636.

2. Description of Each Parcel

Drainage Benefit Assessment Area No. 9 is comprised of Lots 1 through 117 of Tract No. 44330, recorded in Book 1068, pages 79 to 88 of maps in the office of the Registrar-Recorder.

3. Basis and Schedule of Benefit

The basis of benefit was determined to be a buildable parcel, i.e., 1 buildable parcel = 1 benefit unit. There are 117 buildable parcels in Drainage Benefit Assessment Area No. 9. The retention basin is located on a portion of Assessor's Parcel No. 3024-033-063.

Thus the schedule of benefit is as follows:

$\$12,636/117 = \108 per unit.

4. Proposed Assessment for Each Parcel

The following list indicates the benefit units and assessment for each parcel.

DRAINAGE BENEFIT ASSESSMENT AREA NO. 9

<u>Assessor Parcel No.</u>	<u>Benefit Units</u>	<u>Proposed Assessment</u>
3204-033-005	1	\$ 108
3204-033-006	1	\$ 108
3204-033-007	1	\$ 108
3204-033-008	1	\$ 108
3204-033-009	1	\$ 108
3204-033-010	1	\$ 108
3204-033-011	1	\$ 108
3204-033-012	1	\$ 108
3204-033-013	1	\$ 108
3204-033-014	1	\$ 108
3204-033-015	1	\$ 108
3204-033-016	1	\$ 108
3204-033-017	1	\$ 108
3204-033-018	1	\$ 108
3204-033-019	1	\$ 108
3204-033-020	1	\$ 108
3204-033-021	1	\$ 108
3204-033-022	1	\$ 108
3204-033-023	1	\$ 108
3204-033-024	1	\$ 108
3204-033-025	1	\$ 108
3204-033-026	1	\$ 108
3204-033-027	1	\$ 108
3204-033-028	1	\$ 108
3204-033-029	1	\$ 108
3204-033-030	1	\$ 108
3204-033-031	1	\$ 108
3204-033-032	1	\$ 108
3204-033-033	1	\$ 108
3204-033-034	1	\$ 108
3204-033-035	1	\$ 108
3204-033-036	1	\$ 108
3204-033-037	1	\$ 108
3204-033-038	1	\$ 108
3204-033-039	1	\$ 108
3204-033-040	1	\$ 108
3204-033-041	1	\$ 108
3204-033-042	1	\$ 108
3204-033-043	1	\$ 108
3204-033-044	1	\$ 108
3204-033-045	1	\$ 108

<u>Assessor Parcel No.</u>	<u>Benefit Units</u>	<u>Proposed Assessment</u>
3204-033-046	1	\$ 108
3204-033-047	1	\$ 108
3204-033-048	1	\$ 108
3204-033-049	1	\$ 108
3204-033-050	1	\$ 108
3204-033-051	1	\$ 108
3204-033-052	1	\$ 108
3204-033-053	1	\$ 108
3204-033-054	1	\$ 108
3204-033-055	1	\$ 108
3204-033-056	1	\$ 108
3204-033-057	1	\$ 108
3204-033-058	1	\$ 108
3204-033-059	1	\$ 108
3204-033-060	1	\$ 108
3204-033-061	1	\$ 108
3204-033-062	1	\$ 108
3204-033-063	1	\$ 108
3204-034-127	1	\$ 108
3204-034-063	1	\$ 108
3204-034-064	1	\$ 108
3204-034-065	1	\$ 108
3204-034-066	1	\$ 108
3204-034-067	1	\$ 108
3204-034-068	1	\$ 108
3204-034-069	1	\$ 108
3204-034-070	1	\$ 108
3204-034-071	1	\$ 108
3204-034-072	1	\$ 108
3204-034-073	1	\$ 108
3204-034-074	1	\$ 108
3204-034-075	1	\$ 108
3204-034-076	1	\$ 108
3204-034-077	1	\$ 108
3204-034-078	1	\$ 108
3204-034-079	1	\$ 108
3204-034-080	1	\$ 108
3204-034-081	1	\$ 108
3204-034-082	1	\$ 108
3204-034-083	1	\$ 108
3204-034-084	1	\$ 108
3204-034-085	1	\$ 108
3204-034-086	1	\$ 108

<u>Assessor Parcel No.</u>	<u>Benefit Units</u>	<u>Proposed Assessment</u>
3204-034-087	1	\$ 108
3204-034-088	1	\$ 108
3204-034-089	1	\$ 108
3204-034-090	1	\$ 108
3204-034-091	1	\$ 108
3204-034-092	1	\$ 108
3204-034-093	1	\$ 108
3204-034-094	1	\$ 108
3204-034-095	1	\$ 108
3204-034-096	1	\$ 108
3204-034-097	1	\$ 108
3204-034-098	1	\$ 108
3204-034-099	1	\$ 108
3204-034-100	1	\$ 108
3204-034-101	1	\$ 108
3204-034-102	1	\$ 108
3204-034-103	1	\$ 108
3204-034-104	1	\$ 108
3204-034-105	1	\$ 108
3204-034-106	1	\$ 108
3204-034-109	1	\$ 108
3204-034-129	1	\$ 108
3204-034-130	1	\$ 108
3204-034-131	1	\$ 108
3204-034-132	1	\$ 108
3204-034-133	1	\$ 108
3204-034-121	1	\$ 108
3204-034-122	1	\$ 108
3204-034-123	1	\$ 108
3204-034-124	1	\$ 108
3204-034-125	1	\$ 108
3204-034-126	1	\$ 108
3204-034-128	<u>1</u>	<u>\$ 108</u>
TOTALS	117	\$12,636

Engineer's Report
Annual Benefit Assessment
(Pursuant to the Benefit Assessment Act of 1982)

Drainage Benefit Assessment Area No. 13
Tract No. 44440 and
Tract No. 51587



Prepared By
Donald L. Wolfe
Acting Director Of Public Works

Programs Development Division
P.O. Box 1460
Alhambra, Ca 91802-1460

May 2005

1. Description of the Services

The proposed services involve the maintenance, operation, and improvement of drainage facilities constructed for Tract No. 44440 and Tract No. 51587, near Avenue L-8 and 42nd Street West, in the vicinity of Quartz Hill. The facilities consist of a retention basin, inlet structure, block wall, fencing, and gates.

Maintenance, operation, and improvement may include, but are not limited to:

- a. Periodic inspection and evaluation of facilities.
- b. Weed control, insect control, and removal of vegetation and litter as needed.
- c. Periodic pumping of the basin and responding to complaints by residents.
- d. Repair of block wall and gates as needed.
- e. Any other maintenance work needed to ensure the facilities operate properly.

The estimated maintenance cost for Fiscal Year 2005-06 is \$6,600.

2. Description of Each Parcel

Drainage Benefit Assessment Area No. 13 is presently comprised of Lots 1 through 37 of Tract No. 44440, recorded in Book 1193, pages 11 to 14; and of Lots 1 through 96 of Tract No. 51587, recorded in Book 1290, pages 24 to 30, inclusive of maps in the office of the Registrar-Recorder

3. Basis and Schedule of Benefit

The basis of benefit was determined to be a buildable parcel, i.e., 1 buildable parcel = 1 benefit unit. There are 36 buildable parcels in Tract No. 44440. There are 96 buildable parcels in Tract No. 51587 for a total of 132 buildable parcels for both of the recorded tracts. Assessor's Parcel No. 3103-031-037 is occupied by the retention basin and is not assessed.

Thus, the schedule of benefit is as follows:

$\$6,600/132 = \50 per unit

4. Proposed Assessment for Each Parcel

The following list indicates the benefit units and the assessment for each parcel.

DRAINAGE BENEFIT ASSESSMENT AREA NO. 13

<u>Assessor Parcel No.</u>	<u>Benefit Units</u>	<u>Proposed Assessment</u>
3103-031-001	1	\$ 50
3103-031-002	1	\$ 50
3103-031-003	1	\$ 50
3103-031-004	1	\$ 50
3103-031-005	1	\$ 50
3103-031-006	1	\$ 50
3103-031-007	1	\$ 50
3103-031-008	1	\$ 50
3103-031-009	1	\$ 50
3103-031-010	1	\$ 50
3103-031-011	1	\$ 50
3103-031-012	1	\$ 50
3103-031-013	1	\$ 50
3103-031-014	1	\$ 50
3103-031-015	1	\$ 50
3103-031-016	1	\$ 50
3103-031-017	1	\$ 50
3103-031-018	1	\$ 50
3103-031-019	1	\$ 50
3103-031-020	1	\$ 50
3103-031-021	1	\$ 50
3103-031-022	1	\$ 50
3103-031-023	1	\$ 50
3103-031-024	1	\$ 50
3103-031-025	1	\$ 50
3103-031-026	1	\$ 50
3103-031-027	1	\$ 50
3103-031-028	1	\$ 50
3103-031-029	1	\$ 50
3103-031-030	1	\$ 50
3103-031-031	1	\$ 50
3103-031-032	1	\$ 50
3103-031-033	1	\$ 50
3103-031-034	1	\$ 50
3103-031-035	1	\$ 50
3103-031-036	1	\$ 50
3103-031-037	0	\$ 0
3103-032-001	1	\$ 50
3103-032-002	1	\$ 50
3103-032-003	1	\$ 50

<u>Assessor Parcel No.</u>	<u>Benefit Units</u>	<u>Proposed Assessment</u>
3103-032-004	1	\$ 50
3103-032-005	1	\$ 50
3103-032-006	1	\$ 50
3103-032-007	1	\$ 50
3103-032-008	1	\$ 50
3103-032-009	1	\$ 50
3103-032-010	1	\$ 50
3103-032-011	1	\$ 50
3103-032-012	1	\$ 50
3103-032-013	1	\$ 50
3103-032-014	1	\$ 50
3103-032-015	1	\$ 50
3103-032-016	1	\$ 50
3103-032-017	1	\$ 50
3103-032-018	1	\$ 50
3103-032-019	1	\$ 50
3103-032-020	1	\$ 50
3103-032-021	1	\$ 50
3103-032-022	1	\$ 50
3103-032-023	1	\$ 50
3103-032-024	1	\$ 50
3103-032-025	1	\$ 50
3103-032-026	1	\$ 50
3103-032-027	1	\$ 50
3103-032-028	1	\$ 50
3103-032-029	1	\$ 50
3103-032-030	1	\$ 50
3103-032-031	1	\$ 50
3103-032-032	1	\$ 50
3103-032-033	1	\$ 50
3103-032-034	1	\$ 50
3103-032-035	1	\$ 50
3103-032-036	1	\$ 50
3103-032-037	1	\$ 50
3103-032-038	1	\$ 50
3103-032-039	1	\$ 50
3103-032-040	1	\$ 50
3103-032-041	1	\$ 50
3103-032-042	1	\$ 50
3103-032-043	1	\$ 50
3103-032-044	1	\$ 50
3103-032-045	1	\$ 50
3103-032-046	1	\$ 50

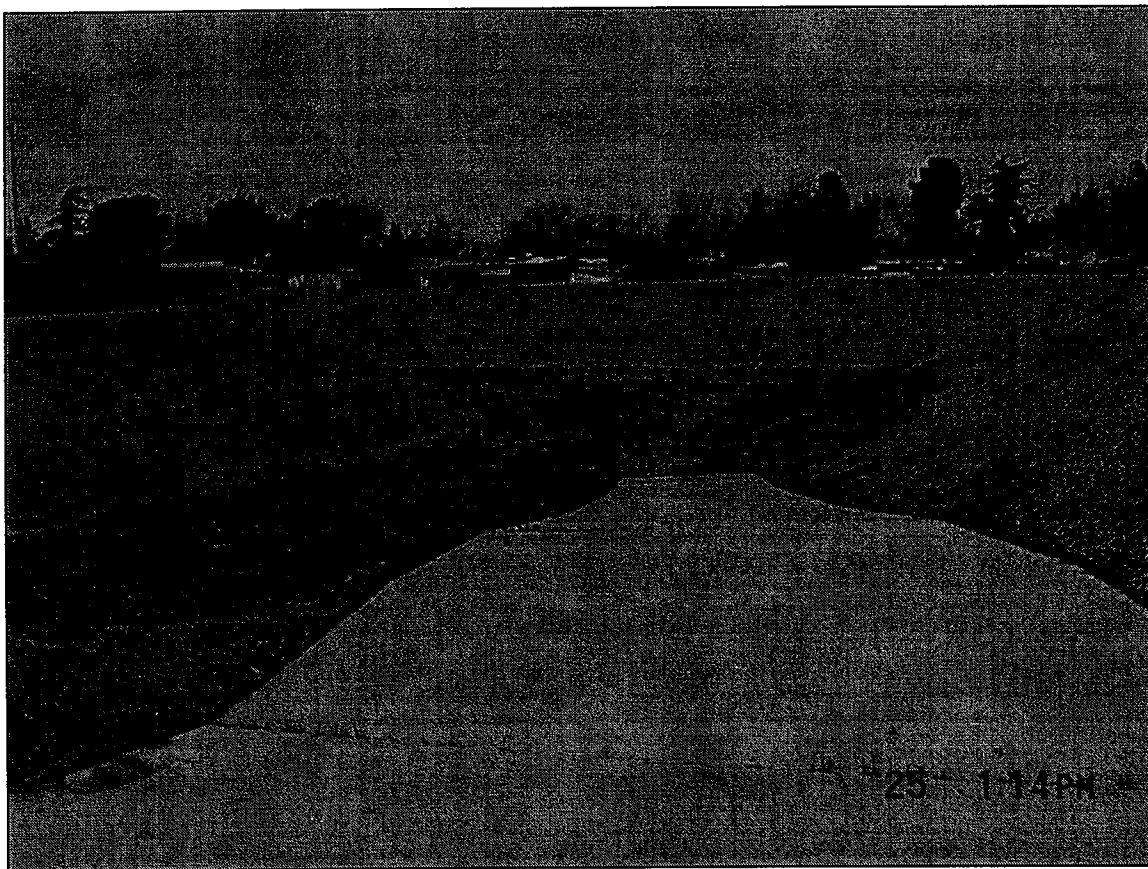
<u>Assessor Parcel No.</u>	<u>Benefit Units</u>	<u>Proposed Assessment</u>
3103-032-047	1	\$ 50
3103-032-048	1	\$ 50
3103-032-049	1	\$ 50
3103-032-050	1	\$ 50
3103-032-051	1	\$ 50
3103-032-052	1	\$ 50
3103-032-053	1	\$ 50
3103-032-054	1	\$ 50
3103-032-055	1	\$ 50
3103-032-056	1	\$ 50
3103-032-057	1	\$ 50
3103-032-058	1	\$ 50
3103-032-059	1	\$ 50
3103-032-060	1	\$ 50
3103-032-061	1	\$ 50
3103-032-062	1	\$ 50
3103-032-063	1	\$ 50
3103-032-064	1	\$ 50
3103-032-065	1	\$ 50
3103-032-066	1	\$ 50
3103-032-067	1	\$ 50
3103-032-068	1	\$ 50
3103-032-069	1	\$ 50
3103-032-070	1	\$ 50
3103-032-071	1	\$ 50
3103-032-072	1	\$ 50
3103-032-073	1	\$ 50
3103-032-074	1	\$ 50
3103-032-075	1	\$ 50
3103-032-076	1	\$ 50
3103-032-077	1	\$ 50
3103-032-078	1	\$ 50
3103-032-079	1	\$ 50
3103-032-080	1	\$ 50
3103-032-081	1	\$ 50
3103-032-082	1	\$ 50
3103-032-083	1	\$ 50
3103-032-084	1	\$ 50
3103-032-085	1	\$ 50
3103-032-086	1	\$ 50
3103-032-087	1	\$ 50
3103-032-088	1	\$ 50
3103-032-089	1	\$ 50

<u>Assessor Parcel No.</u>	<u>Benefit Units</u>	<u>Proposed Assessment</u>
3103-032-090	1	\$ 50
3103-032-091	1	\$ 50
3103-032-092	1	\$ 50
3103-032-093	1	\$ 50
3103-032-094	1	\$ 50
3103-032-095	1	\$ 50
3103-032-096	<u>1</u>	<u>\$ 50</u>
TOTAL	132	\$6,600

Engineer's Report

Annual Benefit Assessment (Pursuant to the Benefit Assessment Act of 1982)

Drainage Benefit Assessment Area No. 15
Tract No. 41294



Prepared By
Donald L. Wolfe
Acting Director Of Public Works

Programs Development Division
P.O. Box 1460
Alhambra, Ca 91802-1460

May 2005

1. Description of the Services

The proposed services involves the maintenance, operation, and improvement of drainage facilities constructed for Tract No. 41294 located near Avenue L-8 and 45th Street West in the vicinity of Quartz Hill. The facilities consist of a retention basin, storm drain, manholes, catch basins, outlet structures, fencing, block wall, and access gates.

Maintenance, operation, and improvement may include, but are not limited to:

- a. Periodic inspection and evaluation of the facilities.
- b. Periodic clean out of catch basins.
- c. Weed control, insect control, and removal of vegetation and litter as needed.
- d. Periodic pumping of the basin and responding to complaints by residents.
- e. Repair of block wall and gates as needed.
- f. Any other maintenance work needed to ensure the facilities operate properly.

The estimated maintenance cost for Fiscal Year 2005-06 is \$5,500.

2. Description of Each Parcel

Drainage Benefit Assessment Area No. 15 is comprised of Lots 1 through 31 of Tract No. 41294, recorded in Book 1110, pages 10 to 13 of maps in the office of the Registrar-Recorder.

3. Basis and Schedule of Benefits

The basis of benefit was determined to be a buildable parcel, i.e., 1 buildable parcel = 1 benefit unit. There are 30 buildable parcels in Drainage Benefit Assessment Area No. 15. Assessor's Parcel No. 3103-018-900 is occupied by the retention basin and is not assessed.

Thus, the schedule of benefit is as follows:

$$\$5,500/30 = \$183.33 \text{ per unit}$$

4. Proposed Assessment for Each Parcel

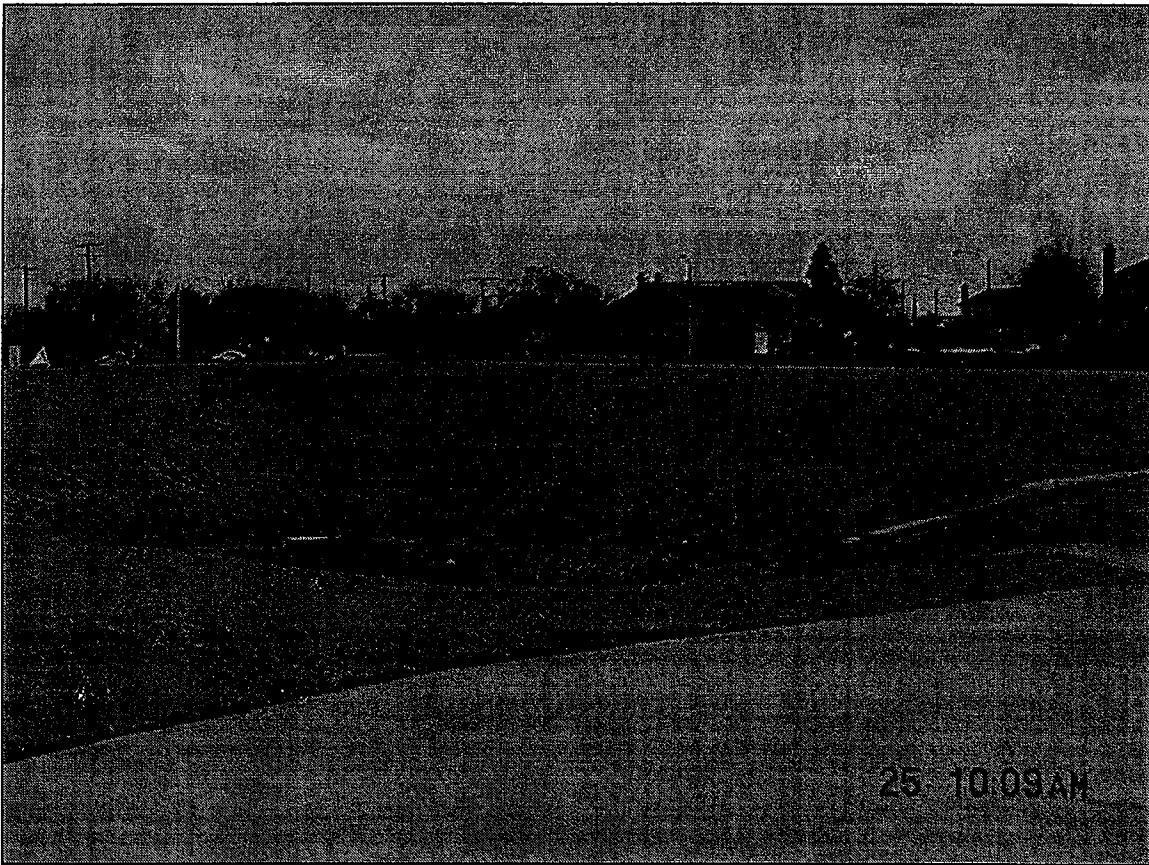
The following list indicates the benefit units and assessment for each parcel.

DRAINAGE BENEFIT ASSESSMENT AREA NO. 15

<u>Assessor Parcel No.</u>	<u>Benefit Units</u>	<u>Proposed Assessment</u>
3103-016-028	1	\$ 183.33
3103-016-029	1	\$ 183.33
3103-016-030	1	\$ 183.33
3103-016-031	1	\$ 183.33
3103-016-032	1	\$ 183.33
3103-016-033	1	\$ 183.33
3103-016-034	1	\$ 183.33
3103-016-035	1	\$ 183.33
3103-016-036	1	\$ 183.33
3103-016-037	1	\$ 183.33
3103-016-038	1	\$ 183.33
3103-016-039	1	\$ 183.33
3103-016-040	1	\$ 183.33
3103-016-041	1	\$ 183.33
3103-016-042	1	\$ 183.33
3103-016-043	1	\$ 183.33
3103-017-026	1	\$ 183.33
3103-017-027	1	\$ 183.33
3103-017-028	1	\$ 183.33
3103-017-029	1	\$ 183.33
3103-017-030	1	\$ 183.33
3103-017-031	1	\$ 183.33
3103-017-032	1	\$ 183.33
3103-017-033	1	\$ 183.33
3103-017-034	1	\$ 183.33
3103-017-035	1	\$ 183.33
3103-017-036	1	\$ 183.33
3103-017-037	1	\$ 183.33
3103-017-038	1	\$ 183.33
3103-017-039	1	\$ 183.43
3103-018-900	<u>0</u>	<u>\$ 0</u>
TOTALS	30	\$5,500.00

Engineer's Report
Annual Benefit Assessment
(Pursuant to the Benefit Assessment Act of 1982)

Drainage Benefit Assessment Area No. 17
Tract No. 37571 and
A Portion of Tract No. 11760



Prepared By
Donald L. Wolfe
Acting Director Of Public Works

Programs Development Division
P.O. Box 1460
Alhambra, Ca 91802-1460

May 2005

1. Description of the Services

The proposed services involves the maintenance, operation, and improvement of drainage facilities constructed for Tract No. 37571 and a portion of Tract No. 11760, located near Avenue M-8 and 50th Street West in the vicinity of Quartz Hill. The facilities consist of an open channel, storm drain, one retention basin, catch basins, block wall, and fences.

Maintenance, operation, and improvement may include, but are not limited to:

- a. Periodic inspection and evaluation of the facilities.
- b. Periodic clean out of catch basins.
- c. Weed control, insect control, and removal of vegetation and litter as needed.
- d. Periodic pumping of the basin and responding to complaints by residents.
- e. Repair of block wall and gates as needed.
- f. Any other maintenance work needed to ensure the facilities operate properly.

The assessment to be levied for Fiscal Year 2005-06 is \$13,853.82.

2. Description of Each Parcel

Drainage Benefit Assessment Area No. 17 is comprised of Lots 1 to 134 of Tract No. 37571 recorded in Book 1087, pages 16 to 20, and Lots 136 to 139, 148, and 149 of Tract No. 11760, recorded in Book 216, pages 1 to 4 of maps in the office of the Registrar-Recorder.

3. Basis and Schedule of Benefit

The basis of benefit was determined to be a buildable parcel, i.e., 1 buildable parcel = 1 benefit unit. Tract No. 37571 has 126 buildable parcels. The adjacent area, portion of Tract No. 11760, has the potential of being divided into 12 buildable parcels. Assessor's Parcel Nos. 3101-044-900 to 3101-044-907 are occupied by the retention basin and are not assessed.

Thus the schedule of benefit is as follows:

$\$13,853.82/138 = \100.39 per unit.

4. Proposed Assessment for Each Parcel

The following list indicates the benefit units and assessment for each parcel.

DRAINAGE BENEFIT ASSESSMENT AREA NO. 17

<u>Assessor Parcel No.</u>	<u>Benefit Units</u>	<u>Proposed Assessment</u>
3101-010-009	1	\$ 100.39
3101-010-010	1	\$ 100.39
3101-010-011	2	\$ 200.78
3101-011-012	2	\$ 200.78
3101-011-013	2	\$ 200.78
3101-011-014	2	\$ 200.78
3101-011-015	2	\$ 200.78
3101-043-001	1	\$ 100.39
3101-043-002	1	\$ 100.39
3101-043-003	1	\$ 100.39
3101-043-004	1	\$ 100.39
3101-043-005	1	\$ 100.39
3101-043-006	1	\$ 100.39
3101-043-007	1	\$ 100.39
3101-043-008	1	\$ 100.39
3101-043-009	1	\$ 100.39
3101-043-010	1	\$ 100.39
3101-043-011	1	\$ 100.39
3101-043-012	1	\$ 100.39
3101-043-013	1	\$ 100.39
3101-043-014	1	\$ 100.39
3101-043-015	1	\$ 100.39
3101-043-016	1	\$ 100.39
3101-043-017	1	\$ 100.39
3101-043-018	1	\$ 100.39
3101-043-019	1	\$ 100.39
3101-043-020	1	\$ 100.39
3101-043-021	1	\$ 100.39
3101-043-022	1	\$ 100.39
3101-043-023	1	\$ 100.39
3101-043-024	1	\$ 100.39
3101-043-025	1	\$ 100.39
3101-043-026	1	\$ 100.39
3101-043-027	1	\$ 100.39
3101-043-028	1	\$ 100.39
3101-043-029	1	\$ 100.39
3101-043-030	1	\$ 100.39
3101-043-031	1	\$ 100.39
3101-043-032	1	\$ 100.39
3101-043-033	1	\$ 100.39
3101-043-034	1	\$ 100.39

<u>Assessor Parcel No.</u>	<u>Benefit Units</u>	<u>Proposed Assessment</u>
3101-043-035	1	\$ 100.39
3101-043-036	1	\$ 100.39
3101-043-037	1	\$ 100.39
3101-043-038	1	\$ 100.39
3101-043-039	1	\$ 100.39
3101-043-040	1	\$ 100.39
3101-043-041	1	\$ 100.39
3101-043-042	1	\$ 100.39
3101-043-043	1	\$ 100.39
3101-043-044	1	\$ 100.39
3101-043-045	1	\$ 100.39
3101-043-046	1	\$ 100.39
3101-043-047	1	\$ 100.39
3101-043-048	1	\$ 100.39
3101-043-049	1	\$ 100.39
3101-043-050	1	\$ 100.39
3101-043-051	1	\$ 100.39
3101-043-052	1	\$ 100.39
3101-043-053	1	\$ 100.39
3101-044-001	1	\$ 100.39
3101-044-002	1	\$ 100.39
3101-044-003	1	\$ 100.39
3101-044-004	1	\$ 100.39
3101-044-005	1	\$ 100.39
3101-044-006	1	\$ 100.39
3101-044-007	1	\$ 100.39
3101-044-008	1	\$ 100.39
3101-044-009	1	\$ 100.39
3101-044-010	1	\$ 100.39
3101-044-011	1	\$ 100.39
3101-044-012	1	\$ 100.39
3101-044-013	1	\$ 100.39
3101-044-014	1	\$ 100.39
3101-044-015	1	\$ 100.39
3101-044-016	1	\$ 100.39
3101-044-017	1	\$ 100.39
3101-044-018	1	\$ 100.39
3101-044-019	1	\$ 100.39
3101-044-020	1	\$ 100.39
3101-044-021	1	\$ 100.39
3101-044-022	1	\$ 100.39
3101-044-023	1	\$ 100.39
3101-044-024	1	\$ 100.39

<u>Assessor Parcel No.</u>	<u>Benefit Units</u>	<u>Proposed Assessment</u>
3101-044-025	1	\$ 100.39
3101-044-026	1	\$ 100.39
3101-044-027	1	\$ 100.39
3101-044-028	1	\$ 100.39
3101-044-029	1	\$ 100.39
3101-044-030	1	\$ 100.39
3101-044-031	1	\$ 100.39
3101-044-032	1	\$ 100.39
3101-044-033	1	\$ 100.39
3101-044-034	1	\$ 100.39
3101-044-035	1	\$ 100.39
3101-044-036	1	\$ 100.39
3101-044-037	1	\$ 100.39
3101-044-038	1	\$ 100.39
3101-044-039	1	\$ 100.39
3101-044-040	1	\$ 100.39
3101-044-041	1	\$ 100.39
3101-044-042	1	\$ 100.39
3101-044-043	1	\$ 100.39
3101-044-044	1	\$ 100.39
3101-044-045	1	\$ 100.39
3101-044-046	1	\$ 100.39
3101-044-047	1	\$ 100.39
3101-044-048	1	\$ 100.39
3101-044-049	1	\$ 100.39
3101-044-050	1	\$ 100.39
3101-044-051	1	\$ 100.39
3101-044-052	1	\$ 100.39
3101-044-053	1	\$ 100.39
3101-044-054	1	\$ 100.39
3101-044-055	1	\$ 100.39
3101-044-056	1	\$ 100.39
3101-044-057	1	\$ 100.39
3101-044-058	1	\$ 100.39
3101-044-059	1	\$ 100.39
3101-044-060	1	\$ 100.39
3101-044-061	1	\$ 100.39
3101-044-062	1	\$ 100.39
3101-044-063	1	\$ 100.39
3101-044-064	1	\$ 100.39
3101-044-065	1	\$ 100.39
3101-044-066	1	\$ 100.39
3101-044-067	1	\$ 100.39

<u>Assessor Parcel No.</u>	<u>Benefit Units</u>	<u>Proposed Assessment</u>
3101-044-068	1	\$ 100.39
3101-044-069	1	\$ 100.39
3101-044-070	1	\$ 100.39
3101-044-071	1	\$ 100.39
3101-044-072	1	\$ 100.39
3101-044-073	1	\$ 100.39
3101-044-900	0	\$ 0
3101-044-901	0	\$ 0
3101-044-902	0	\$ 0
3101-044-903	0	\$ 0
3101-044-904	0	\$ 0
3101-044-905	0	\$ 0
3101-044-906	0	\$ 0
3101-044-907	<u>0</u>	<u>\$ 0</u>
TOTAL	138	\$13,853.82

Engineer's Report

Annual Benefit Assessment
(Pursuant to the Benefit Assessment Act of 1982)

Drainage Benefit Assessment Area No. 22
Tract No. 34734



Prepared By
Donald L. Wolfe
Acting Director Of Public Works

Programs Development Division
P.O. Box 1460
Alhambra, Ca 91802-1460

May 2005

1. Description of the Services

The proposed services involves the maintenance, operation, and improvement of drainage facilities constructed for Tract No. 34734 located near Avenue M-4 and 55th Street West in the vicinity of Quartz Hill. The facilities consist of a retention basin, storm drain, swale, catch basins, outlet structures, fencing, block wall, and access gates.

Maintenance, operation, and improvement may include, but are not limited to:

- a. Periodic inspection and evaluation of the facilities.
- b. Periodic clean out of catch basins.
- c. Weed control, insect control, and removal of vegetation and litter as needed.
- d. Periodic pumping of the basin and responding to complaints by residents.
- e. Repair of block wall and gates as needed.
- f. Any other maintenance work needed to ensure the facilities operate properly.

The assessment to be levied for Fiscal Year 2005-06 is \$4,191.29.

2. Description of Each Parcel

Drainage Benefit Assessment Area No. 22 is comprised of Lots 1 to 24 of Tract No. 34734, recorded in Book 1118, pages 75 to 77 of maps in the office of the Registrar-Recorder.

3. Basis and Schedule of Benefit

The basis of benefit was determined to be a buildable parcel, i.e., 1 buildable parcel = 1 benefit unit. There are 23 buildable parcels in DBAA No. 22. Assessor's Parcel No. 3101-004-054 is occupied by the retention basin and will not be assessed.

Thus the schedule of benefit is as follows:

$\$4,191.29/23 = \182.23 per unit.

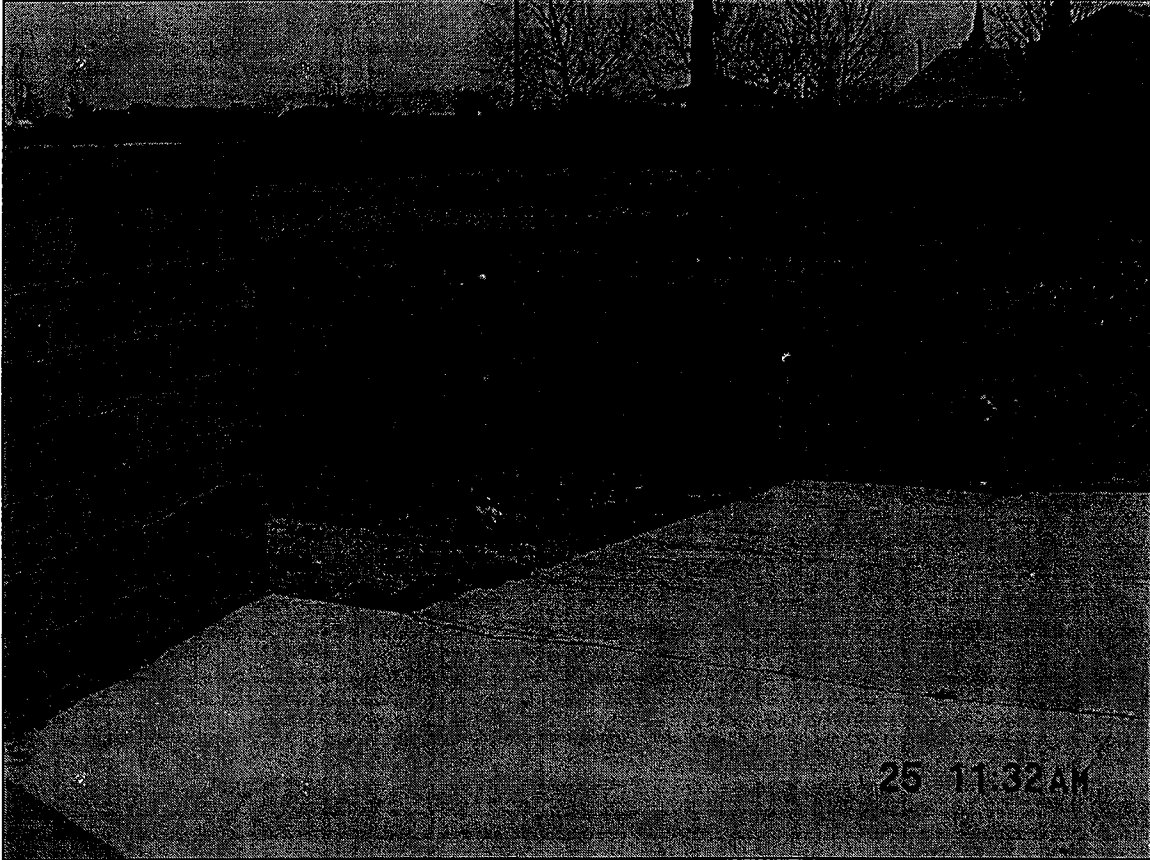
4. Proposed Assessment for Each Parcel

The assessment amount and the benefit units for each parcel is shown below:

DRAINAGE BENEFIT ASSESSMENT AREA NO. 22

<u>Assessor Parcel No.</u>	<u>Benefit Units</u>	<u>Proposed Assessment</u>
3101-004-047	1	\$ 182.23
3101-004-048	1	\$ 182.23
3101-004-049	1	\$ 182.23
3101-004-050	1	\$ 182.23
3101-004-051	1	\$ 182.23
3101-004-052	1	\$ 182.23
3101-004-053	1	\$ 182.23
3101-004-054	0	\$ 0
3101-004-055	1	\$ 182.23
3101-004-056	1	\$ 182.23
3101-004-057	1	\$ 182.23
3101-004-058	1	\$ 182.23
3101-004-059	1	\$ 182.23
3101-004-060	1	\$ 182.23
3101-004-061	1	\$ 182.23
3101-004-062	1	\$ 182.23
3101-004-063	1	\$ 182.23
3101-004-064	1	\$ 182.23
3101-004-065	1	\$ 182.23
3101-004-066	1	\$ 182.23
3101-004-067	1	\$ 182.23
3101-004-068	1	\$ 182.23
3101-004-069	1	\$ 182.23
3101-004-070	<u>1</u>	<u>\$ 182.23</u>
TOTAL	23	\$4,191.29

Engineer's Report
Annual Benefit Assessment
(Pursuant to the Benefit Assessment Act of 1982)
Drainage Benefit Assessment Area No. 23
Tract No. 46057



Prepared By
Donald L. Wolfe
Acting Director Of Public Works

Programs Development Division
P.O. Box 1460
Alhambra, Ca 91802-1460

May 2005

1. Description of the Services

The proposed services involves the maintenance, operation, and improvement of drainage facilities constructed for Tract No. 46057 located near Avenue L-4 and 51st Street West in the vicinity of Quartz Hill. The facilities consist of a retention basin, storm drain, catch basins, outlet structure, block wall, and access gate.

Maintenance, operation, and improvement may include, but are not limited to:

- a. Periodic inspection and evaluation of the facilities.
- b. Periodic clean out of catch basins.
- c. Weed control, insect control, and removal of vegetation and litter as needed.
- d. Periodic pumping of the basin and responding to complaints by residents.
- e. Repair of block wall and gates as needed.
- f. Any other maintenance work needed to ensure the facilities operate properly

The assessment to be levied for Fiscal Year 2005-06 is \$10,383.36.

2. Description of Each Parcel

Drainage Benefit Assessment Area No. 23 is comprised of Lots 1 to 66 of Tract No. 46057, recorded in Book 1118, pages 56 to 60, of maps in the office of the Registrar-Recorder.

3. Basis and Schedule of Benefit

The basis of benefit was determined to be a buildable parcel, i.e., 1 buildable parcel = 1 benefit unit. There are 64 buildable parcels in Drainage Benefit Assessment Area 23. Assessor Parcel Nos. 3102-030-030 and 3102-030-031 are occupied by the retention basin and are not assessed.

Thus the schedule of benefit is as follows:

$$\$10,383.36/64 = \$162.24 \text{ per unit.}$$

4. Proposed Assessment for Each Parcel

The following list indicates the benefit units and assessment amount for each parcel.

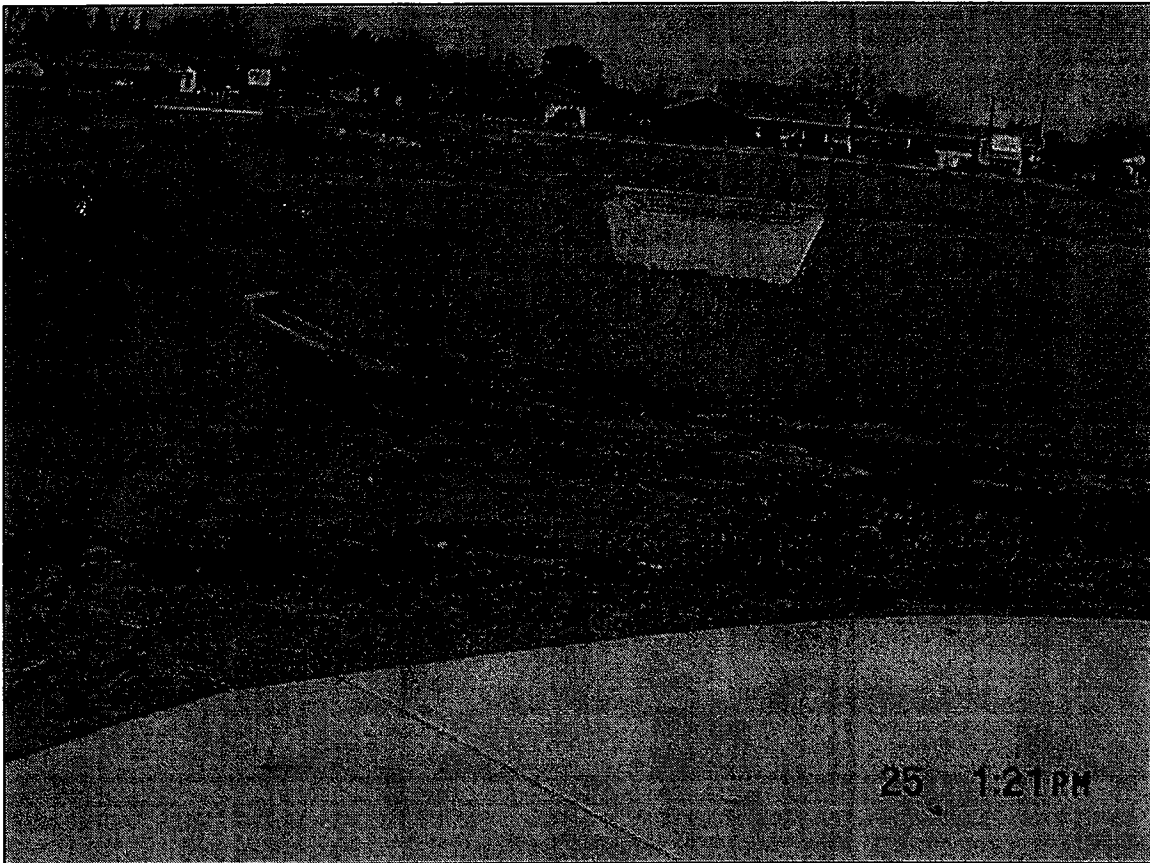
DRAINAGE BENEFIT ASSESSMENT AREA NO. 23

<u>Assessor Parcel No.</u>	<u>Benefit Units</u>	<u>Proposed Assessment</u>
3102-030-001	1	\$ 162.24
3102-030-002	1	\$ 162.24
3102-030-003	1	\$ 162.24
3102-030-004	1	\$ 162.24
3102-030-005	1	\$ 162.24
3102-030-006	1	\$ 162.24
3102-030-007	1	\$ 162.24
3102-030-008	1	\$ 162.24
3102-030-009	1	\$ 162.24
3102-030-010	1	\$ 162.24
3102-030-011	1	\$ 162.24
3102-030-012	1	\$ 162.24
3102-030-013	1	\$ 162.24
3102-030-014	1	\$ 162.24
3102-030-015	1	\$ 162.24
3102-030-016	1	\$ 162.24
3102-030-017	1	\$ 162.24
3102-030-018	1	\$ 162.24
3102-030-019	1	\$ 162.24
3102-030-020	1	\$ 162.24
3102-030-021	1	\$ 162.24
3102-030-022	1	\$ 162.24
3102-030-023	1	\$ 162.24
3102-030-024	1	\$ 162.24
3102-030-025	1	\$ 162.24
3102-030-026	1	\$ 162.24
3102-030-027	1	\$ 162.24
3102-030-028	1	\$ 162.24
3102-030-029	1	\$ 162.24
3102-030-030	0	\$ 0
3102-030-031	0	\$ 0
3102-031-001	1	\$ 162.24
3102-031-002	1	\$ 162.24
3102-031-003	1	\$ 162.24
3102-031-004	1	\$ 162.24
3102-031-005	1	\$ 162.24
3102-031-006	1	\$ 162.24
3102-031-007	1	\$ 162.24
3102-031-008	1	\$ 162.24
3102-031-009	1	\$ 162.24
3102-031-010	1	\$ 162.24

<u>Assessor Parcel No.</u>	<u>Benefit Units</u>	<u>Proposed Assessment</u>
3102-031-011	1	\$ 162.24
3102-031-012	1	\$ 162.24
3102-031-013	1	\$ 162.24
3102-031-014	1	\$ 162.24
3102-031-015	1	\$ 162.24
3102-031-016	1	\$ 162.24
3102-031-017	1	\$ 162.24
3102-031-018	1	\$ 162.24
3102-031-019	1	\$ 162.24
3102-031-020	1	\$ 162.24
3102-031-021	1	\$ 162.24
3102-031-022	1	\$ 162.24
3102-031-023	1	\$ 162.24
3102-031-024	1	\$ 162.24
3102-031-025	1	\$ 162.24
3102-031-026	1	\$ 162.24
3102-031-027	1	\$ 162.24
3102-031-028	1	\$ 162.24
3102-031-029	1	\$ 162.24
3102-031-030	1	\$ 162.24
3102-031-031	1	\$ 162.24
3102-031-032	1	\$ 162.24
3102-031-033	1	\$ 162.24
3102-031-034	1	\$ 162.24
3102-031-035	<u>1</u>	<u>\$ 162.24</u>
TOTALS	64	\$10,383.36

Engineer's Report
Annual Benefit Assessment
(Pursuant to the Benefit Assessment Act of 1982)

Drainage Benefit Assessment Area No. 25
Tract No. 46068 and
Tract No. 52394



Prepared By
Donald L. Wolfe
Acting Director Of Public Works

Programs Development Division
P.O. Box 1460
Alhambra, Ca 91802-1460

May 2005

1. Description of the Services

The proposed services involves the maintenance, operation, and improvement of drainage facilities constructed for Tract No. 46068 and Tract No. 52390 located near Avenue L-8 and 45th Street West in the vicinity of Quartz Hill. The facilities consist of a retention basin, catch basins, outlet structure, block wall, access gate, and driveway.

Maintenance, operation, and improvement may include, but are not limited to:

- a. Periodic inspection and evaluation of the facilities.
- b. Periodic clean out of catch basins.
- c. Weed control, insect control, and removal of vegetation and litter as needed.
- d. Periodic pumping of the basin and responding to complaints by residents.
- e. Repair of block wall and gates as needed.
- f. Any other maintenance work needed to ensure the facilities operate properly

The assessment to be levied for Fiscal Year 2005-06 is \$5,600.

2. Description of Each Parcel

Drainage Benefit Assessment Area No. 25 is comprised of Lots 1 to 54 of Tract No. 46068, recorded in Book 1142, pages 11 to 17, and Lots 1 to 68 of Tract No. 52394, recorded in Book 1269, pages 92 to 96, inclusive of maps in the office of the Registrar-Recorder.

3. Basis and Schedule of Benefit

The basis of benefit was determined to be a buildable parcel, i.e., 1 buildable parcel = 1 benefit unit. There are 50 buildable parcels in Tract No. 46068. There are 88 buildable parcels in Tract No. 52394 for a total of 138 buildable parcels for both of the recorded tracts. Assessor's Parcel Nos. 3103-029-011 to 3103-029-014 are occupied by the retention basin and are not assessed.

Thus, the schedule of benefit is as follows:

$$\$5,600.00/138 = \$40.58 \text{ per unit.}$$

4. Proposed Assessment for Each Parcel

The following list indicates the benefit units and assessment amount for each parcel:

DRAINAGE BENEFIT ASSESSMENT AREA NO. 25

<u>Assessor Parcel No.</u>	<u>Benefit Units</u>	<u>Proposed Assessment</u>
3103-029-001	1	\$ 40.58
3103-029-002	1	\$ 40.58
3103-029-003	1	\$ 40.58
3103-029-004	1	\$ 40.58
3103-029-005	1	\$ 40.58
3103-029-006	1	\$ 40.58
3103-029-007	1	\$ 40.58
3103-029-008	1	\$ 40.58
3103-029-009	1	\$ 40.58
3103-029-010	1	\$ 40.58
3103-029-011	0	\$ 0
3103-029-012	0	\$ 0
3103-029-013	0	\$ 0
3103-029-014	0	\$ 0
3103-029-015	1	\$ 40.58
3103-029-016	1	\$ 40.58
3103-029-017	1	\$ 40.58
3103-029-018	1	\$ 40.58
3103-029-019	1	\$ 40.58
3103-029-020	1	\$ 40.58
3103-029-021	1	\$ 40.58
3103-029-022	1	\$ 40.58
3103-029-023	1	\$ 40.58
3103-029-024	1	\$ 40.58
3103-029-025	1	\$ 40.58
3103-029-026	1	\$ 40.58
3103-029-027	1	\$ 40.58
3103-029-028	1	\$ 40.58
3103-029-029	1	\$ 40.58
3103-029-030	1	\$ 40.58
3103-029-031	1	\$ 40.58
3103-029-032	1	\$ 40.58
3103-029-033	1	\$ 40.58
3103-029-034	1	\$ 40.58
3103-029-035	1	\$ 40.58
3103-029-036	1	\$ 40.58
3103-029-037	1	\$ 40.58
3103-029-038	1	\$ 40.58
3103-029-039	1	\$ 40.58
3103-029-040	1	\$ 40.58
3103-029-041	1	\$ 40.58

<u>Assessor Parcel No.</u>	<u>Benefit Units</u>	<u>Proposed Assessment</u>
3103-029-042	1	\$ 40.58
3103-029-043	1	\$ 40.58
3103-029-044	1	\$ 40.58
3103-029-045	1	\$ 40.58
3103-029-046	1	\$ 40.58
3103-029-047	1	\$ 40.58
3103-029-048	1	\$ 40.58
3103-029-049	1	\$ 40.58
3103-029-050	1	\$ 40.58
3103-029-051	1	\$ 40.58
3103-029-052	1	\$ 40.58
3103-029-053	1	\$ 40.58
3103-029-054	1	\$ 40.58
3103-029-055	1	\$ 40.58
3103-029-056	1	\$ 40.58
3103-029-057	1	\$ 40.58
3103-029-058	1	\$ 40.58
3103-029-059	1	\$ 40.58
3103-029-060	1	\$ 40.58
3103-029-061	1	\$ 40.58
3103-029-062	1	\$ 40.58
3103-029-063	1	\$ 40.58
3103-029-064	1	\$ 40.58
3103-029-065	1	\$ 40.58
3103-029-066	1	\$ 40.58
3103-029-067	1	\$ 40.58
3103-029-068	1	\$ 40.58
3103-029-069	1	\$ 40.58
3103-029-070	1	\$ 40.58
3103-029-071	1	\$ 40.58
3103-029-072	1	\$ 40.58
3103-029-073	1	\$ 40.58
3103-029-074	1	\$ 40.58
3103-029-075	11	\$ 446.38
3103-029-076	11	\$ 446.38
3103-030-001	1	\$ 40.58
3103-030-002	1	\$ 40.58
3103-030-003	1	\$ 40.58
3103-030-004	1	\$ 40.58
3103-030-005	1	\$ 40.58
3103-030-006	1	\$ 40.58

<u>Assessor Parcel No.</u>	<u>Benefit Units</u>	<u>Proposed Assessment</u>
3103-030-007	1	\$ 40.58
3103-030-008	1	\$ 40.58
3103-030-009	1	\$ 40.58
3103-030-010	1	\$ 40.58
3103-030-011	1	\$ 40.58
3103-030-012	1	\$ 40.58
3103-030-013	1	\$ 40.58
3103-030-014	1	\$ 40.58
3103-030-015	1	\$ 40.58
3103-030-016	1	\$ 40.58
3103-030-017	1	\$ 40.58
3103-030-018	1	\$ 40.58
3103-030-019	1	\$ 40.58
3103-030-020	1	\$ 40.58
3103-030-021	1	\$ 40.58
3103-030-022	1	\$ 40.58
3103-030-023	1	\$ 40.58
3103-030-024	1	\$ 40.58
3103-030-025	1	\$ 40.58
3103-030-026	1	\$ 40.58
3103-030-027	1	\$ 40.58
3103-030-028	1	\$ 40.58
3103-030-029	1	\$ 40.58
3103-030-030	1	\$ 40.58
3103-030-031	1	\$ 40.58
3103-030-032	1	\$ 40.58
3103-030-033	1	\$ 40.58
3103-030-034	1	\$ 40.58
3103-030-035	1	\$ 40.58
3103-030-036	1	\$ 40.58
3103-030-037	1	\$ 40.58
3103-030-038	1	\$ 40.58
3103-030-039	1	\$ 40.58
3103-030-040	1	\$ 40.58
3103-030-041	1	\$ 40.58
3103-030-042	1	\$ 40.58
3103-030-043	1	\$ 40.57
3103-030-044	1	\$ 40.57
3103-030-045	1	\$ 40.57
3103-030-046	1	\$ 40.57
TOTALS	138	\$5,600.00

Engineer's Report
Annual Benefit Assessment
(Pursuant to the Benefit Assessment Act of 1982)
Drainage Benefit Assessment Area No. 26
Tract No. 44464 and
A Portion of Parcel Map No. 6980



Prepared By
Donald L. Wolfe
Acting Director Of Public Works

Programs Development Division
P.O. Box 1460
Alhambra, Ca 91802-1460

May 2005

1. Description of the Services

The proposed services involves the maintenance, operation, and improvement of drainage facilities constructed for Tract No. 44464 and a portion of Parcel Map No. 6980, located near Avenue L-4 and 52nd Street West in the vicinity of Quartz Hill. The facilities consist of a retention basin, catch basins, outlet structure, block wall, access gate, and driveway.

Maintenance, operation, and improvements may include, but are not limited to:

- a. Periodic inspection and evaluation of the facilities.
- b. Periodic clean out of catch basins.
- c. Weed control, insect control, and removal of vegetation and litter as needed.
- d. Periodic pumping of the basin and responding to complaints by residents.
- e. Repair of block wall and gates as needed.
- f. Any other maintenance work needed to ensure the facilities operate properly.

The assessment to be levied for Fiscal Year 2005-06 is \$7,500.

2. Description of Each Parcel

Drainage Benefit Assessment Area No. 26 is comprised of Lots 1 to 17 of Tract No. 44464, recorded in Book 1143, pages 9 to 12; and a portion of Lot 1 of Parcel Map No. 6980 recorded in Book 117, pages 76 to 77, of maps in the office of the Registrar-Recorder.

3. Basis and Schedule of Benefits

The basis of benefit was determined to be a buildable parcel, i.e., 1 buildable parcel = one benefit unit. There are 22 buildable parcels in Drainage Benefit Assessment Area 26. Assessor's Parcel No. 3102-030-038 is occupied by the retention basin and is not assessed.

Thus the schedule of benefit is as follows:

$$\$7,500.00/22 = \$340.91$$

4. Proposed Assessment for Each Parcel

The following list indicates the benefit units and assessment amount for each parcel.

DRAINAGE BENEFIT ASSESSMENT AREA NO. 26

<u>Assessor Parcel No.</u>	<u>Benefit Units</u>	<u>Proposed Assessment</u>
3102-024-012	6	\$2,045.44
3102-030-032	1	\$ 340.91
3102-030-033	1	\$ 340.91
3102-030-034	1	\$ 340.91
3102-030-035	1	\$ 340.91
3102-030-036	1	\$ 340.91
3102-030-037	1	\$ 340.91
3102-030-038	0	\$ 0
3102-031-036	1	\$ 340.91
3102-031-037	1	\$ 340.91
3102-031-038	1	\$ 340.91
3102-031-039	1	\$ 340.91
3102-031-040	1	\$ 340.91
3102-031-041	1	\$ 340.91
3102-031-042	1	\$ 340.91
3102-031-043	1	\$ 340.91
3102-031-044	1	\$ 340.91
3102-031-045	<u>1</u>	<u>\$ 340.91</u>
TOTALS	22	\$7,500.00

Engineer's Report

Annual Benefit Assessment
(Pursuant to the Benefit Assessment Act of 1982)

Drainage Benefit Assessment Area No. 28
Tract No. 44414



Prepared By
Donald L. Wolfe
Acting Director Of Public Works

Programs Development Division
P.O. Box 1460
Alhambra, Ca 91802-1460

May 2005

1. Description of the Services

The proposed services involves the maintenance, operation, and improvement of drainage facilities constructed for Tract No. 44414 located near Avenue M-12 and 50th Street West in the vicinity of Quartz Hill. The facilities consist of a retention basin, storm drain, catch basins, inlet structures, block wall, access gate, and access ramp.

Maintenance, operation, and improvements may include, but are not limited to:

- a. Periodic inspection and evaluation of the facilities.
- b. Periodic clean out of catch basins.
- c. Weed control, insect control, and removal of vegetation and litter as needed.
- d. Periodic pumping of the basin and responding to complaints by residents.
- e. Repair of block wall and gates as needed.
- f. Any other maintenance work needed to ensure the facilities operate properly.

The assessment to be levied for Fiscal Year 2005-06 is \$6,510.

2. Description of Each Parcel

Drainage Benefit Assessment Area No. 28 is comprised of Lots 1 to 32 of Tract No. 44414, recorded in Book 1145, pages 65 to 67 of maps in the office of the Registrar-Recorder.

3. Basis and Schedule of Benefits

The basis of benefit was determined to be a buildable parcel, i.e., 1 buildable parcel = one benefit unit. There are 31 buildable parcels in Drainage Benefit Assessment Area 28. Assessor's Parcel No. 3101-046-005 is occupied by the retention basin and is not assessed.

Thus the schedule of benefit is as follows:

$$\$6,510.00/31 = \$210.00$$

4. Proposed Assessment for Each Parcel

The following list indicates the benefit units and assessment amount for each parcel.

DRAINAGE BENEFIT ASSESSMENT AREA NO. 28

<u>Assessor Parcel No.</u>	<u>Benefit Units</u>	<u>Proposed Assessment</u>
3101-046-001	1	\$ 210.00
3101-046-002	1	\$ 210.00
3101-046-003	1	\$ 210.00
3101-046-004	1	\$ 210.00
3101-046-005	0	\$ 0.00
3101-046-006	1	\$ 210.00
3101-046-007	1	\$ 210.00
3101-046-008	1	\$ 210.00
3101-046-009	1	\$ 210.00
3101-046-010	1	\$ 210.00
3101-046-011	1	\$ 210.00
3101-046-012	1	\$ 210.00
3101-046-013	1	\$ 210.00
3101-046-018	1	\$ 210.00
3101-046-019	1	\$ 210.00
3101-046-020	1	\$ 210.00
3101-046-021	1	\$ 210.00
3101-046-022	1	\$ 210.00
3101-046-023	1	\$ 210.00
3101-046-024	1	\$ 210.00
3101-046-025	1	\$ 210.00
3101-046-026	1	\$ 210.00
3101-046-027	1	\$ 210.00
3101-046-028	1	\$ 210.00
3101-046-029	1	\$ 210.00
3101-046-030	1	\$ 210.00
3101-046-031	1	\$ 210.00
3101-046-032	1	\$ 210.00
3101-046-033	2	\$ 420.00
3101-046-034	<u>2</u>	<u>\$ 420.00</u>
TOTALS	31	\$6,510.00

Appendix B

Drainage Benefit Assessment Areas Resolutions 2005

**RESOLUTION OF THE BOARD OF SUPERVISORS OF THE
COUNTY OF LOS ANGELES, CALIFORNIA, DETERMINING AND
IMPOSING THE ANNUAL ASSESSMENT FOR
DRAINAGE BENEFIT ASSESSMENT AREA NO. 5**

WHEREAS, the Board of Supervisors of the County of Los Angeles, State of California, established Drainage Benefit Assessment Area (DBAA) No. 5 on February 12, 1985, pursuant to the Benefit Assessment Act of 1982 (California Government Code Sections 54703, et seq.), to finance the maintenance, operation, and improvement of drainage facilities constructed and dedicated as a condition of approval of a subdivision of land known as Tract No. 36395; and

WHEREAS, Tract No. 36395 has been recorded and the drainage facilities have been constructed; and

WHEREAS, a tentative tract map for another subdivision of land known as Tract No. 46543, located adjacent to Tract No. 36395, has been approved by the County and will utilize the above-referenced drainage facilities to provide drainage and flood control services to the parcels located in said Tract No. 46543; and

WHEREAS, as a condition of approval of Tract No. 46543, DBAA No. 5 was expanded by the Board of Supervisors of the County of Los Angeles, State of California on August 10, 2004, to include Tract No. 46543; and

WHEREAS, an engineer's report, dated May 2005, containing a description of the services proposed to be financed through the revenue derived from the assessment, a description of each parcel of real property subject to the assessment, the amount of the assessment for each parcel, and the basis and schedule of the assessment, has been prepared by the Director of Public Works and filed with the Clerk of this Board.

NOW, THEREFORE, BE IT RESOLVED, that the Board of Supervisors of the County of Los Angeles hereby determines and imposes the assessment in accordance with the Director of Public Works' May 2005 engineer's report for DBAA No. 5 on file with the Clerk of the Board; and that the assessment shall be levied upon the respective parcels of land in the assessment area and collected for the 2005-06 Fiscal Year on the tax roll in the same manner, by the same persons, and at the same time as, together with and separately from, the general taxes of the County of Los Angeles without further action by this Board.

The foregoing Resolution was on the _____ day of _____, 2005, adopted by the Board of Supervisors of the County of Los Angeles and ex-officio of the governing body of all other special assessment and taxing districts, agencies, and authorities for which said Board so acts.

VIOLET VARONA-LUKENS
Executive Officer of the
Board of Supervisors of the
County of Los Angeles

By _____
Deputy

APPROVED AS TO FORM:

RAYMOND G. FORTNER JR.
County Counsel

By 
Deputy

**RESOLUTION OF THE BOARD OF SUPERVISORS OF THE
COUNTY OF LOS ANGELES, CALIFORNIA, DETERMINING AND
IMPOSING THE ANNUAL ASSESSMENT FOR
DRAINAGE BENEFIT ASSESSMENT AREA NO. 8**

WHEREAS, the Board of Supervisors of the County of Los Angeles, State of California, established Drainage Benefit Assessment Area No. 8 on May 12, 1987, pursuant to the Benefit Assessment Act of 1982 (California Government Code Sections 54703, et seq.), to finance the maintenance, operation and improvement of drainage facilities constructed and dedicated as a condition of approval of a subdivision of land known as Tract No. 43545; and

WHEREAS, Tract No. 43545 has been recorded and the drainage facilities have been constructed; and

WHEREAS, an engineer's report, dated May 2005, containing a description of the services proposed to be financed through the revenue derived from the assessment, a description of each parcel of real property subject to the assessment, the amount of the assessment for each parcel, and the basis and schedule of the assessment, has been prepared by the Director of Public Works and filed with the Clerk of this Board.

NOW, THEREFORE, BE IT RESOLVED, that the Board of Supervisors of the County of Los Angeles hereby determines and imposes the assessment in accordance with the Director of Public Works' May 2005 engineer's report for Drainage Benefit Assessment Area No. 8 on file with the Clerk of the Board; and that the assessment shall be levied upon the respective parcels of land in the assessment area and collected for the 2005-06 Fiscal Year on the tax roll in the same manner, by the same persons, and at the same time as, together with and separately from, the general taxes of the County of Los Angeles without further action by this Board.

The foregoing Resolution was on the _____ day of _____, 2005, adopted by the Board of Supervisors of the County of Los Angeles and ex-officio of the governing body of all other special assessment and taxing districts, agencies, and authorities for which said Board so acts.

VIOLET VARONA-LUKENS
Executive Officer of the
Board of Supervisors of the
County of Los Angeles

By _____
Deputy

APPROVED AS TO FORM:

RAYMOND G. FORTNER JR.
County Counsel

By 
Deputy

**RESOLUTION OF THE BOARD OF SUPERVISORS OF THE
COUNTY OF LOS ANGELES, CALIFORNIA, DETERMINING AND
IMPOSING THE ANNUAL ASSESSMENT FOR
DRAINAGE BENEFIT ASSESSMENT AREA NO. 9**

WHEREAS, the Board of Supervisors of the County of Los Angeles, State of California, established Drainage Benefit Assessment Area No. 9 on May 19, 1986, pursuant to the Benefit Assessment Act of 1982 (California Government Code Sections 54703, et seq.), to finance the maintenance, operation and improvement of drainage facilities constructed and dedicated as a condition of approval of a subdivision of land known as Tract No. 44330; and

WHEREAS, Tract No. 44330 has been recorded and the drainage facilities have been constructed; and

WHEREAS, an engineer's report, dated May 2005, containing a description of the services proposed to be financed through the revenue derived from the assessment, a description of each parcel of real property subject to the assessment, the amount of the assessment for each parcel, and the basis and schedule of the assessment, has been prepared by the Director of the Public Works and filed with the Clerk of this Board.

NOW, THEREFORE, BE IT RESOLVED, that the Board of Supervisors of the County of Los Angeles hereby determines and imposes the assessment in accordance with the Director of Public Works' May 2005 engineer's report for Drainage Benefit Assessment Area No. 9 on file with the Clerk of the Board; and that the assessment shall be levied upon the respective parcels of land in the assessment area and collected for the 2005-06 Fiscal Year on the tax roll in the same manner, by the same persons, and at the same time as, together with and separately from, the general taxes of the County of Los Angeles without further action by this Board.

The foregoing Resolution was on the _____ day of _____, 2005, adopted by the Board of Supervisors of the County of Los Angeles and ex-officio of the governing body of all other special assessment and taxing districts, agencies, and authorities for which said Board so acts.

VIOLET VARONA-LUKENS
Executive Officer of the
Board of Supervisors of the
County of Los Angeles

By _____
Deputy

APPROVED AS TO FORM:

RAYMOND G. FORTNER JR.
County Counsel

By 
Deputy

**RESOLUTION OF THE BOARD OF SUPERVISORS OF THE
COUNTY OF LOS ANGELES, CALIFORNIA, DETERMINING AND
IMPOSING THE ANNUAL ASSESSMENT FOR
DRAINAGE BENEFIT ASSESSMENT AREA NO. 13**

WHEREAS, the Board of Supervisors of the County of Los Angeles, State of California, established Drainage Benefit Assessment Area No. 13 on November 21, 1986, pursuant to the Benefit Assessment Act of 1982 (California Government Code Sections 54703, et seq.), to finance the maintenance, operation and improvement of drainage facilities constructed and dedicated as a condition of approval of two subdivisions of land known as Tract No. 44440 and Tract No. 51587; and

WHEREAS, Tract Nos. 44440 and 51587 have been recorded and the drainage facilities have been constructed; and

WHEREAS, an engineer's report, dated May 2005, containing a description of the service proposed to be financed through the revenue derived from the assessment, a description of each parcel of real property subject to the assessment, the amount of the assessment for each parcel, and the basis and schedule of the assessment, has been prepared by the Director of Public Works and filed with the Clerk of this Board.

NOW, THEREFORE, BE IT RESOLVED, that the Board of Supervisors of the County of Los Angeles hereby determines and imposes the assessment in accordance with the Director of Public Works' May 2005 engineer's report for Drainage Benefit Assessment Area No. 13 on file with the Clerk of the Board; and that the assessment shall be levied upon the respective parcels of land in the assessment area and collected for the 2005-06 Fiscal Year on the tax roll in the same manner, by the same persons, and at the same time as, together with and separately from, the general taxes of the County of Los Angeles without further action by this Board.

The foregoing Resolution was on the _____ day of _____, 2005, adopted by the Board of Supervisors of the County of Los Angeles and ex-officio of the governing body of all other special assessment and taxing districts, agencies, and authorities for which said Board so acts.

VIOLET VARONA-LUKENS
Executive Officer of the
Board of Supervisors of the
County of Los Angeles

By _____
Deputy

APPROVED AS TO FORM:

RAYMOND G. FORTNER JR.
County Counsel

By 
Deputy

**RESOLUTION OF THE BOARD OF SUPERVISORS OF THE
COUNTY OF LOS ANGELES, CALIFORNIA, DETERMINING AND
IMPOSING THE ANNUAL ASSESSMENT FOR
DRAINAGE BENEFIT ASSESSMENT AREA NO. 15**

WHEREAS, the Board of Supervisors of the County of Los Angeles, State of California, established Drainage Benefit Assessment Area No. 15 on January 28, 1988, pursuant to the Benefit Assessment Act of 1982 (California Government Code Sections 54703, et seq.), to finance the maintenance, operation and improvement of drainage facilities constructed and dedicated as a condition of approval of a subdivision of land known as Tract No. 41294; and

WHEREAS, Tract No. 41294 has been recorded and the drainage facilities have been constructed; and

WHEREAS, an engineer's report, dated May 2005, containing a description of the services proposed to be financed through the revenue derived from the assessment, a description of each parcel of real property subject to the assessment, the amount of the assessment for each parcel, and the basis and schedule of the assessment, has been prepared by the Director of Public Works and filed with the Clerk of this Board.

NOW, THEREFORE, BE IT RESOLVED, that the Board of Supervisors of the County of Los Angeles hereby determines and imposes the assessment in accordance with the Director of Public Works' May 2005 engineer's report for Drainage Benefit Assessment Area No. 15 on file with the Clerk of the Board; and that the assessment shall be levied upon the respective parcels of land in the assessment area and collected for the 2005-06 Fiscal Year on the tax roll in the same manner, by the same persons, and at the same time as, together with and separately from, the general taxes of the County of Los Angeles without further action by this Board.

The foregoing Resolution was on the _____ day of _____, 2005, adopted by the Board of Supervisors of the County of Los Angeles and ex-officio of the governing body of all other special assessment and taxing districts, agencies, and authorities for which said Board so acts.

VIOLET VARONA-LUKENS
Executive Officer of the
Board of Supervisors of the
County of Los Angeles

By _____
Deputy

APPROVED AS TO FORM:

RAYMOND G. FORTNER JR.
County Counsel

By 
Deputy

**RESOLUTION OF THE BOARD OF SUPERVISORS OF THE
COUNTY OF LOS ANGELES, CALIFORNIA, DETERMINING AND
IMPOSING THE ANNUAL ASSESSMENT FOR
DRAINAGE BENEFIT ASSESSMENT AREA NO. 17**

WHEREAS, the Board of Supervisors of the County of Los Angeles, State of California, established Drainage Benefit Assessment Area No. 17 on March 30, 1989, pursuant to the Benefit Assessment Act of 1982 (California Government Code Section 54703, et seq.), to finance the maintenance, operation and improvement of drainage facilities constructed and dedicated as a condition of approval of two subdivisions of land known as Tract No. 37571 and Tract No. 11760; and

WHEREAS, Tract Nos. 37571 and 11760 have been recorded and the drainage facilities have been constructed; and

WHEREAS, an engineer's report, dated May 2005, containing a description of the service proposed to be financed through the revenue derived from the assessment, a description of each parcel of real property subject to the assessment, the amount of the assessment for each parcel, and the basis and schedule of the assessment, has been prepared by the Director of Public Works and filed with the Clerk of this Board.

NOW, THEREFORE, BE IT RESOLVED, that the Board of Supervisors of the County of Los Angeles hereby determines and imposes the assessment in accordance with the Director of Public Works' May 2005 engineer's report for Drainage Benefit Assessment Area No. 17 on file with the Clerk of the Board; and that the assessment shall be levied upon the respective parcels of land in the assessment area and collected for the 2005-06 Fiscal Year on the tax roll in the same manner, by the same persons, and at the same time as, together with and separately from, the general taxes of the County of Los Angeles without further action by this Board.

The foregoing Resolution was on the _____ day of _____, 2005, adopted by the Board of Supervisors of the County of Los Angeles and ex-officio of the governing body of all other special assessment and taxing districts, agencies, and authorities for which said Board so acts.

VIOLET VARONA-LUKENS
Executive Officer of the
Board of Supervisors of the
County of Los Angeles

By _____
Deputy

APPROVED AS TO FORM:

RAYMOND G. FORTNER JR.
County Counsel

By 
Deputy

**RESOLUTION OF THE BOARD OF SUPERVISORS OF THE
COUNTY OF LOS ANGELES, CALIFORNIA, DETERMINING AND
IMPOSING THE ANNUAL ASSESSMENT FOR
DRAINAGE BENEFIT ASSESSMENT AREA NO. 22**

WHEREAS, the Board of Supervisors of the County of Los Angeles, State of California, established Drainage Benefit Assessment Area No. 22 on February 14, 1989, pursuant to the Benefit Assessment Act of 1982 (California Government Code Section 54703, et seq.), to finance the maintenance, operation and improvement of drainage facilities constructed and dedicated as a condition of approval of a subdivision of land known as Tract No. 34734; and

WHEREAS, Tract No. 34734 has been recorded and the drainage facilities have been constructed; and

WHEREAS, an engineer's report, dated May 2005, containing a description of the services proposed to be financed through the revenue derived from the assessment, a description of each parcel of real property subject to the assessment, the amount of the assessment for each parcel, and the basis and schedule of the assessment, has been prepared by the Director of Public Works and filed with the Clerk of this Board.

NOW, THEREFORE, BE IT RESOLVED, that the Board of Supervisors of the County of Los Angeles hereby determines and imposes the assessment in accordance with the Director of Public Works' May 2005 engineer's report for Drainage Benefit Assessment Area No. 22 on file with the Clerk of the Board; and that the assessment shall be levied upon the respective parcels of land in the assessment area and collected for the 2005-06 Fiscal Year on the tax roll in the same manner, by the same persons, and at the same time as, together with and separately from, the general taxes of the County of Los Angeles without further action by this Board.

The foregoing Resolution was on the _____ day of _____, 2005, adopted by the Board of Supervisors of the County of Los Angeles and ex-officio of the governing body of all other special assessment and taxing districts, agencies, and authorities for which said Board so acts.

VIOLET VARONA-LUKENS
Executive Officer of the
Board of Supervisors of the
County of Los Angeles

By _____
Deputy

APPROVED AS TO FORM:

RAYMOND G. FORTNER JR.
County Counsel

By  _____
Deputy

**RESOLUTION OF THE BOARD OF SUPERVISORS OF THE
COUNTY OF LOS ANGELES, CALIFORNIA, DETERMINING AND
IMPOSING THE ANNUAL ASSESSMENT FOR
DRAINAGE BENEFIT ASSESSMENT AREA NO. 23**

WHEREAS, the Board of Supervisors of the County of Los Angeles, State of California, established Drainage Benefit Assessment Area No. 23 on June 22, 1989, pursuant to the Benefit Assessment Act of 1982 (California Government Code Section 54703, et seq.), to finance the maintenance, operation and improvement of drainage facilities constructed and dedicated as a condition of approval of a subdivision of land known as Tract No. 46057; and

WHEREAS, Tract No. 46057 has been recorded and the drainage facilities have been constructed; and

WHEREAS, an engineer's report, dated May 2005, containing a description of the service proposed to be financed through the revenue derived from the assessment, a description of each parcel of real property subject to the assessment, the amount of the assessment for each parcel, and the basis and schedule of the assessment, has been prepared by the Director of Public Works and filed with the Clerk of this Board.

NOW, THEREFORE, BE IT RESOLVED, that the Board of Supervisors of the County of Los Angeles hereby determines and imposes the assessment in accordance with the Director of Public Works' May 2005 engineer's report for Drainage Benefit Assessment Area No. 23 on file with the Clerk of the Board; and that the assessment shall be levied upon the respective parcels of land in the assessment area and collected for the 2005-06 Fiscal Year on the tax roll in the same manner, by the same persons, and at the same time as, together with and separately from, the general taxes of the County of Los Angeles without further action by this Board.

The foregoing Resolution was on the _____ day of _____, 2005, adopted by the Board of Supervisors of the County of Los Angeles and ex-officio of the governing body of all other special assessment and taxing districts, agencies, and authorities for which said Board so acts.

VIOLET VARONA-LUKENS
Executive Officer of the
Board of Supervisors of the
County of Los Angeles

By _____ Deputy

APPROVED AS TO FORM:

RAYMOND G. FORTNER JR.
County Counsel

By  Deputy

**RESOLUTION OF THE BOARD OF SUPERVISORS OF THE
COUNTY OF LOS ANGELES, CALIFORNIA, DETERMINING AND
IMPOSING THE ANNUAL ASSESSMENT FOR
DRAINAGE BENEFIT ASSESSMENT AREA NO. 25**

WHEREAS, the Board of Supervisors of the County of Los Angeles, State of California, established Drainage Benefit Assessment Areas No. 25 on February 15, 1990, pursuant to the Benefit Assessment Act of 1982 (California Government Code Section 54703, et seq.), to finance the maintenance, operation and improvement of drainage facilities constructed and dedicated as a condition of approval of two subdivisions of land known as Tract No. 46068 and Tract No. 52394; and

WHEREAS, Tract Nos. 46068 and 52394 have been recorded and the drainage facilities have been constructed; and

WHEREAS, an engineer's report, dated May 2005, containing a description of the services proposed to be financed through the revenue derived from the assessment, a description of each parcel of real property subject to the assessment, the amount of the assessment for each parcel, and the basis and schedule of the assessment, has been prepared by the Director of Public Works and filed with the Clerk of this Board.

NOW, THEREFORE, BE IT RESOLVED, that the Board of Supervisors of the County of Los Angeles hereby determines and imposes the assessment in accordance with the Director of Public Works' May 2005 engineer's report for Drainage Benefit Assessment Area No. 25 on file with the Clerk of the Board; and that the assessment shall be levied upon the respective parcels of land in the assessment area and collected for the 2005-06 Fiscal Year on the tax roll in the same manner, by the same persons, and at the same time as, together with and separately from, the general taxes of the County of Los Angeles without further action by this Board.

The foregoing Resolution was on the _____ day of _____, 2005, adopted by the Board of Supervisors of the County of Los Angeles and ex-officio of the governing body of all other special assessment and taxing districts, agencies, and authorities for which said Board so acts.

VIOLET VARONA-LUKENS
Executive Officer of the
Board of Supervisors of the
County of Los Angeles

By _____
Deputy

APPROVED AS TO FORM:

RAYMOND G. FORTNER JR.
County Counsel

By 
Deputy

**RESOLUTION OF THE BOARD OF SUPERVISORS OF THE
COUNTY OF LOS ANGELES, CALIFORNIA, DETERMINING AND
IMPOSING THE ANNUAL ASSESSMENT FOR
DRAINAGE BENEFIT ASSESSMENT AREA NO. 26**

WHEREAS, the Board of Supervisors of the County of Los Angeles, State of California, established Drainage Benefit Assessment Area No. 26 on September 27, 1990, pursuant to the Benefit Assessment Act of 1982 (California Government Code Section 54703, et seq.), to finance the maintenance, operation and improvement of drainage facilities constructed and dedicated as a condition of approval of two subdivisions of land known as Tract No. 44464 and Parcel Map No. 6980; and

WHEREAS, Tract No. 44464 and Parcel Map No. 6980 have been recorded and the drainage facilities have been constructed; and

WHEREAS, an engineer's report, dated May 2005, containing a description of the services proposed to be financed through the revenue derived from the assessment, a description of each parcel of real property subject to the assessment, the amount of the assessment for each parcel, and the basis and schedule of the assessment, has been prepared by the Director of Public Works and filed with the Clerk of this Board.

NOW, THEREFORE, BE IT RESOLVED, that the Board of Supervisors of the County of Los Angeles hereby determines and imposes the assessment in accordance with the Director of Public Works' May 2005 engineer's report for Drainage Benefit Assessment Area No. 26 on file with the Clerk of the Board; and that the assessment shall be levied upon the respective parcels of land in the assessment area and collected for the 2005-06 Fiscal Year on the tax roll in the same manner, by the same persons, and at the same time as, together with and separately from, the general taxes of the County of Los Angeles without further action by this Board.

The foregoing Resolution was on the _____ day of _____, 2005, adopted by the Board of Supervisors of the County of Los Angeles and ex-officio of the governing body of all other special assessment and taxing districts for which said Board so acts.

VIOLET VARONA-LUKENS
Executive Officer of the
Board of Supervisors of the
County of Los Angeles

By _____
Deputy

APPROVED AS TO FORM:

RAYMOND G. FORTNER JR.
County Counsel

By 
Deputy

**RESOLUTION OF THE BOARD OF SUPERVISORS OF THE
COUNTY OF LOS ANGELES, CALIFORNIA, DETERMINING AND
IMPOSING THE ANNUAL ASSESSMENT FOR
DRAINAGE BENEFIT ASSESSMENT AREA NO. 28**

WHEREAS, the Board of Supervisors of the County of Los Angeles, State of California, established Drainage Benefit Assessment Area No. 28 on January 17, 1991, pursuant to the Benefit Assessment Act of 1982 (California Government Code Section 54703, et seq.), to finance the maintenance, operation and improvement of drainage facilities constructed and dedicated as a condition of approval of a subdivision of land known as Tract No. 44414; and

WHEREAS, Tract No. 44414 has been recorded and the drainage facilities have been constructed; and

WHEREAS, an engineer's report, dated May 2005, containing a description of the services proposed to be financed through the revenue derived from the assessment, a description of each parcel of real property subject to the assessment, the amount of the assessment for each parcel, and the basis and schedule of the assessment, has been prepared by the Director of Public Works and filed with the Clerk of this Board.

NOW, THEREFORE, BE IT RESOLVED, that the Board of Supervisors of the County of Los Angeles hereby determines and imposes the assessment in accordance with the Director of Public Works' May 2005 engineer's report for Drainage Benefit Assessment Area No. 28 on file with the Clerk of the Board; and that the assessment shall be levied upon the respective parcels of land in the assessment area and collected for the 2005-06 Fiscal Year on the tax roll in the same manner, by the same persons, and at the same time as, together with and separately from, the general taxes of the County of Los Angeles without further action by this Board.

The foregoing Resolution was on the _____ day of _____, 2005, adopted by the Board of Supervisors of the County of Los Angeles and ex-officio of the governing body of all other special assessment and taxing districts for which said Board so acts.

VIOLET VARONA-LUKENS
Executive Officer of the
Board of Supervisors of the
County of Los Angeles

By _____
Deputy

APPROVED AS TO FORM:

RAYMOND G. FORTNER JR.
County Counsel

By  _____
Deputy