

COUNTY OF LOS ANGELES
DEPARTMENT OF AGRICULTURAL COMMISSIONER/WEIGHTS AND MEASURES

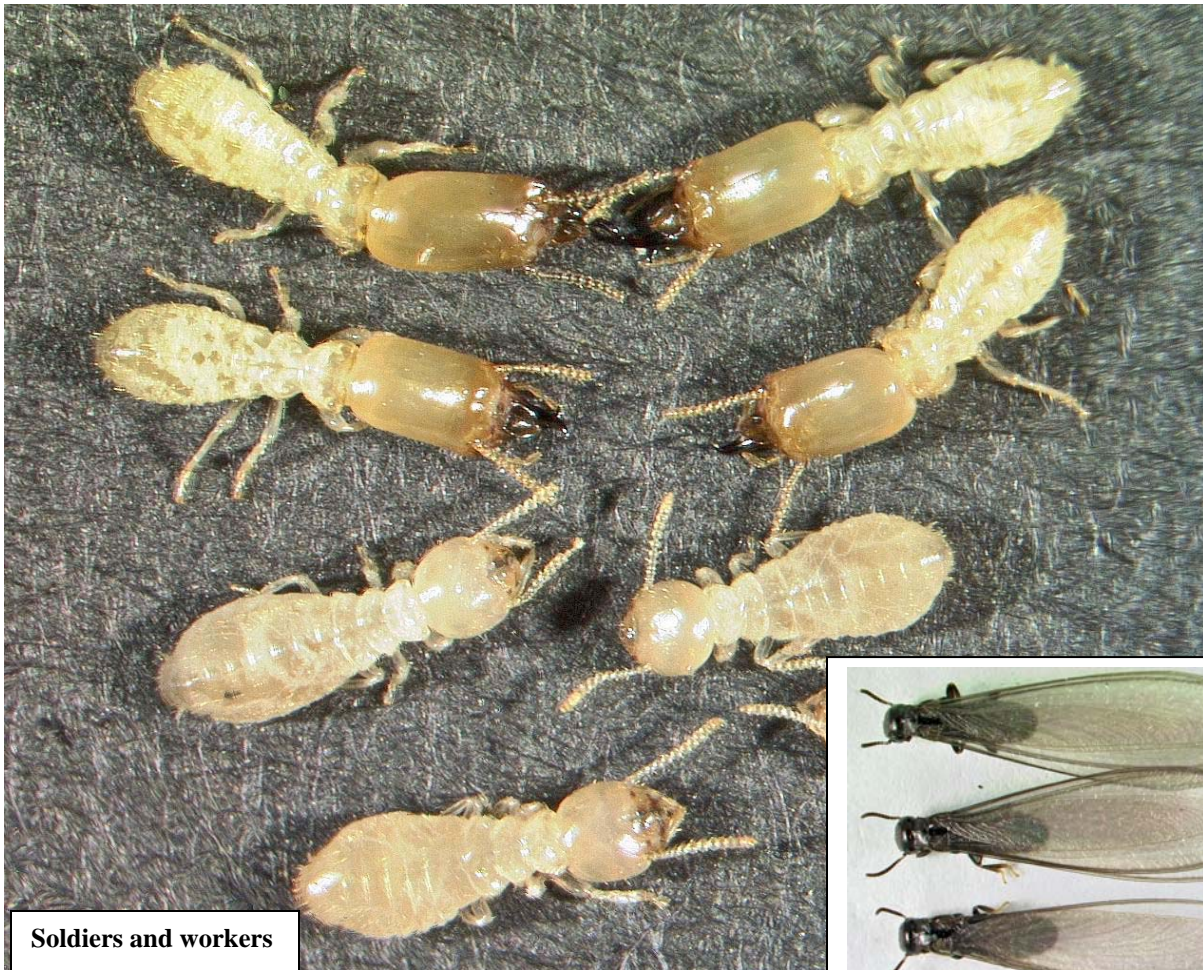
Western Subterranean Termite (*Reticulitermes hesperus*)

Distribution: Known from western Mexico, U.S. (California, Idaho, Nevada, Oregon, Washington), and Canada (British Columbia).

Damage: *R. hesperus* can attack various wood products, as well as trees, and shrubs. Colonies are usually located in the soil with galleries and mud tubes leading to nearby wood. Aerial infestations (with no ground connection) are rare and may be found in places where required moisture and food are present.

Field ID: Reproductives (alates) (about 10 mm long, including wings) have dark brown to almost black bodies. Wings are brownish-gray with only few hairs. Basal part of the wing with 2 dark, heavily sclerotized veins. Head with relatively small ocelli. Fontanelle present (may be indistinct).

Soldiers have light brown, rectangular heads (with dorsal fontanelle) and cream-colored bodies. Long, curved mandibles have no teeth. **Workers** are difficult to distinguish from other termite species and are of little value for identification.



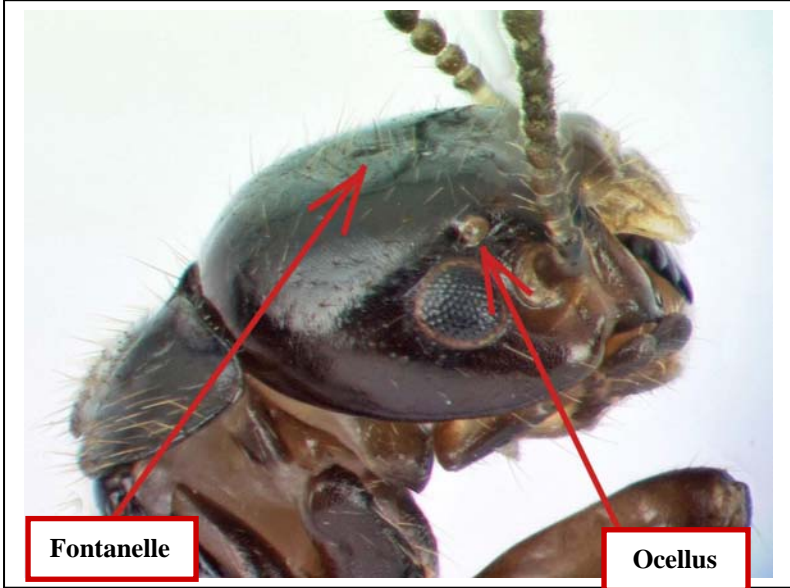
Soldiers and workers



Reproductives (alates)



Head of the soldier

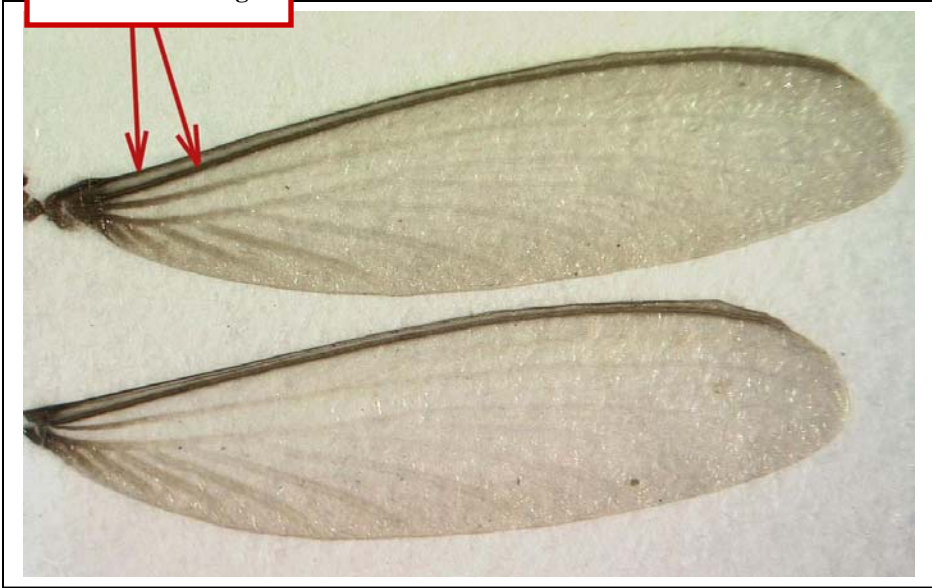


Fontanelle

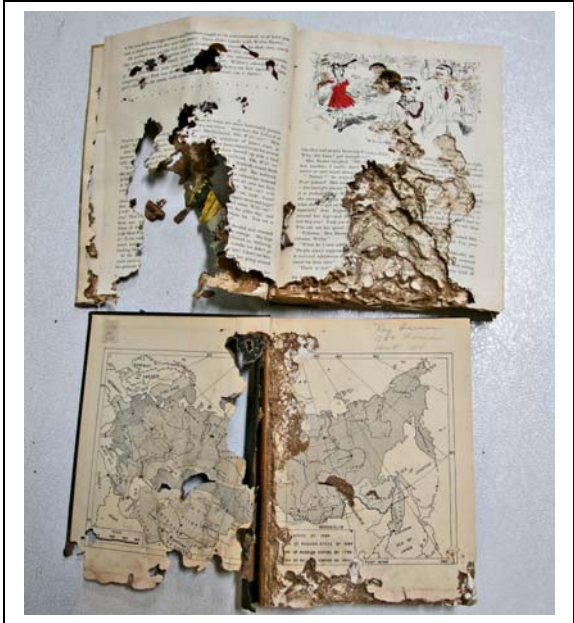
Ocellus

Head of the reproductive (alate)

2 strong veins at base of forewing



Forewing of the reproductive (alate)



Damaged books