

Small Hive Beetle (*Aethina tumida*)

Distribution: Native to South Africa. Introduced into the U.S. (several southeastern and northern states and California) and Australia.

Damage: Pollen, wax, brood and honey are consumed by larvae (the most damaging stage) and adults. Excrements produced by *A. tumida* may cause honey to ferment and drip out of cells. Heavy infestations threaten the survival of the colony and in some cases force the bees to abandon the nest. It has been shown that *A. tumida* can use various fruits as alternative food sources and complete its life cycle on them.

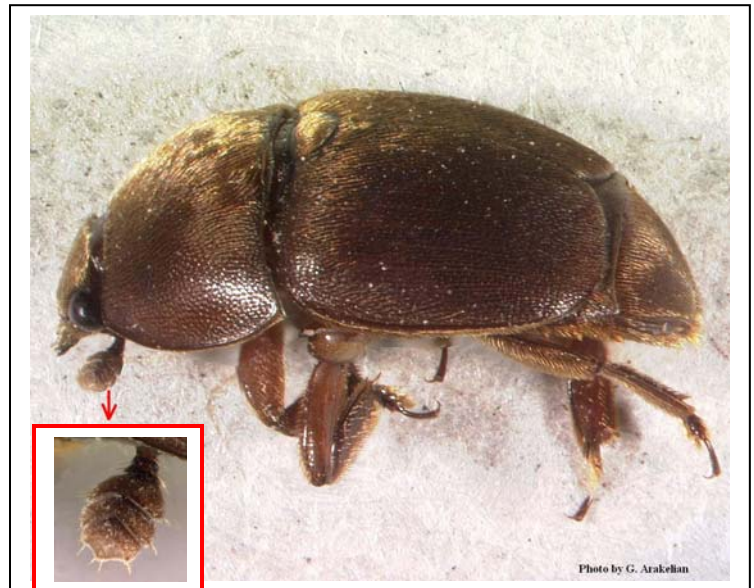
Field ID: Adult (5-7 mm) has oval shape, reddish-brown to black body. Elytra are short and do not cover the entire abdomen. Antennae with 3-segmented, rounded clubs.

Larva (10-11 mm when fully grown) has cream color body with light brown legs and head. Body segments are armed with prominent, paired, brown dorsal spines.

Pupa light tan to brown color and can be found in the soil not far from the beehives.



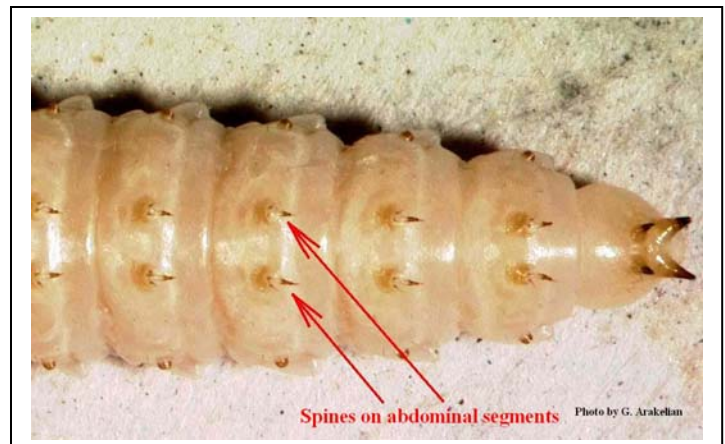
Adult (dorsal view)



Adult (lateral view) and antennal club (magnified)



Larva (lateral view)



Larva (dorsal view)