

COUNTY OF LOS ANGELES  
DEPARTMENT OF AGRICULTURAL COMMISSIONER/WEIGHTS AND MEASURES

## Olive Psyllid (*Euphyllura olivina*)

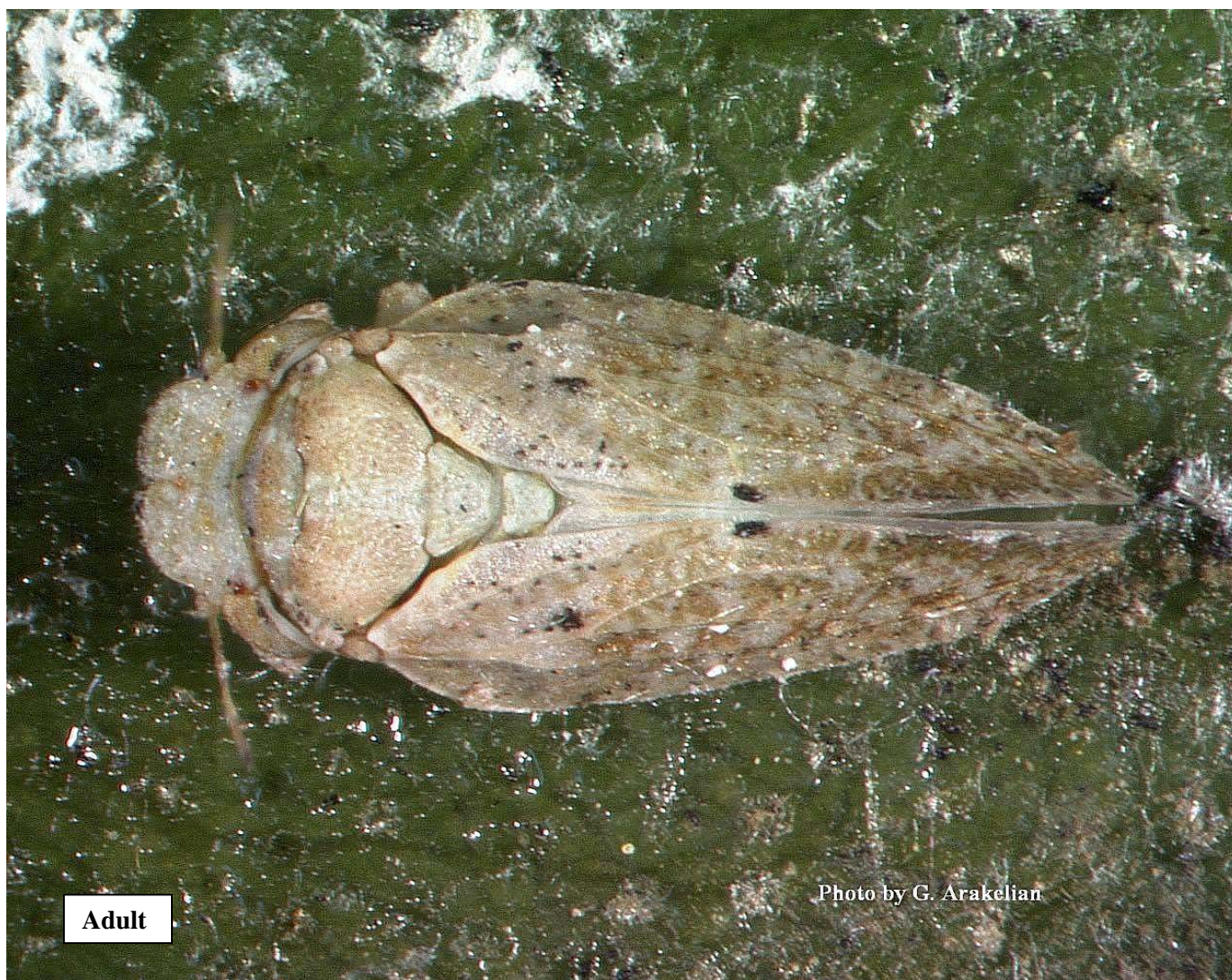
**Distribution:** Olive growing regions from Western Europe to Iran. Introduced into the U.S.: California.

**Hosts:** Olive

**Damage:** Infested trees are contaminated with masses of wax and sticky honeydew (upon which sooty molds develop) produced by larvae. Feeding may cause flowers to drop prematurely. Large populations are able to retard the growth of young trees.

**Field ID: Adults** (about 2-2.5mm) pale green to tan color suffused with light brown. Forewings are marked with few well-defined black spots. Jump readily when disturbed.

**Larvae:** Light green to light brown. Flat body covered with large quantities of white wax. Pass through five instars.



Adult

Photo by G. Arakelian



*E. olivina* infestation on olive trees

