

Los Angeles County CORONER



2007



Annual Report



Los Angeles County Department of Coroner Annual Report



2
0
0
7



Gloria Molina
Supervisor, First District
Yvonne Brathwaite Burke
Supervisor, Second District
Zev Yaroslavsky
Supervisor, Third District
Don Knabe
Supervisor, Fourth District
Michael D. Antonovich
Supervisor, Fifth District

On December 7, 1990, an ordinance approved by the County of Los Angeles Board of Supervisors created a Department of Coroner administered by a nonphysician director for all nonphysician operations, while retaining the Chief Medical Examiner-Coroner to set standards for the entire Department and carry out statutorily-mandated Coroner functions.

The ordinance placed the responsibility for all physician staff under the control of the Chief Medical Examiner-Coroner, subject to the general direction of the Chief Executive Officer, and the nonphysician director was given authority to manage/direct all nonphysician operations and staff with the Department, subject to the general direction of the Chief Executive Officer.

Board of Supervisors



Los Angeles County Department of Coroner Annual Report



2
0
0
7

TABLE OF CONTENTS

Department Heads' Message	4
Organizational Chart.....	6
Administrative Services Bureau	8
Forensic Medicine Bureau	10
Forensic Laboratories Bureau	12
Operations Bureau	14
Public Services Division.....	17
Death Statistics Index	20
Population of Los Angeles County	21
Reported and Accepted cases	22
Final Mode of Coroner's Cases	23
Death Rates per 100,000 Population.....	24
Modes for Child Deaths	25
Statistics Required for NAME	26
Coroner's Cases by Age	27
Coroner's Cases by Gender.....	28
Coroner's Cases by Race.....	29
Mode of Death by Month.....	30
Racial Distribution for Each Mode	31
Mode Distribution for Each Age Group	32
Accidental Deaths.....	33
Transportation Accidents	34
Accidental Falls	35
Homicidal Deaths.....	36
Suicidal Deaths	37
Natural Deaths.....	38
Circulatory System Disease among Natural Deaths	39
Nervous System Disease among Natural Deaths.....	41
Infectious Diseases among Natural Deaths	42
Neoplasms among Natural Deaths	43
Toxicology Statistics Index	44
Cases with Drugs Detected by Mode.....	45
Marijuana Detected by Mode	45
Cocaine (Benzoyllecgonine) Detected by Mode.....	46
Methamphetamine Detected by Mode.....	46
Heroin (6-monoacetyl morphine) Detected by Mode.....	47
Phencyclidine Detected by Mode.....	47
Drugs by Classification	48
Alcohol Detected by Mode	49
Alcohol Detected by Year	49

Table of Contents



Los Angeles County Department of Coroner Annual Report



2
0
0
7

DEPARTMENT HEADS' MESSAGE

This report contains statistical information from the Los Angeles County Department of Coroner for the year 2007, as well as selected statistics from the previous ten years.

Significant Accomplishments

- *Neuropathologists affiliated with the Department published an atlas of neuropathology which presents Coroner's case material.*
- *The Department set up a Department-wide quality assurance committee.*
- *The Coroner participated with other County departments in setting up a review mechanism for elder deaths.*
- *Planning continued for the renovation of the Coroner's building. There was a change in work shifts and environmental studies were completed in preparation for construction.*
- *The Department obtained Board of Supervisors' approval to contract with forensic pathologists for as-needed services.*
- *Operations Bureau implemented a veteran's disposition program designed to expedite veterans' burials for eligible decedents.*
- *Forensic Laboratories began the process of developing an in-house DNA laboratory.*

Legislation

AB 682. Consent is not required for HIV testing during autopsy (California Health & Safety Code 120990)

AB 1689. The Coroner may allow anatomical gifts under specified circumstances. Tissue may be used for research or education only if an anatomical gift has been made. The Coroner may disallow organ donation in Coroner's cases only under specified circumstances. (California Health & Safety Code 7150-7151.40).

SB 1196. The Coroner must inquire into deaths where the decedent has not seen a physician or a hospice-associated registered nurse within 20 days of death. (California Government Code 27491). When requested by the next of kin, the Coroner shall perform an autopsy if there has been no previous autopsy on a decedent, and may perform an autopsy if there has been a previous autopsy (California Government Code 27520).

Department Heads' Message



Los Angeles County Department of Coroner Annual Report



2
0
0
7

Department Heads' Message

Publications

LA Pena, MC Fishbein, "Fatal myocarditis related to *Campylobacter jejuni* infection: A case report" *Cardiovascular Pathology* 2007 Feb;16:119-21.

TT Noguchi, C Rogers, L Sathyavagiswaran, "Quality improvement of patient care—forensic pathologists' perspective", *Legal Medicine* 2007 Mar;9:71-5.

L Sathyavagiswaran, C Rogers, TT Noguchi, "Restraint asphyxia in in-custody deaths: Medical examiner's role in prevention of deaths", *Legal Medicine* 2007 Mar;9:88-93.

L Sathyavagiswaran, MR Pines, "Suicides: Case studies" in *Child Fatality Review: An Interdisciplinary Guide and Photographic Reference*, R. Alexander, ed., 2007.

HH Itabashi, JM Andrews, U Tomiyasu, SE Erlich, L Sathyavagiswaran, *Forensic Neuropathology: A Practical Review of the Fundamentals*, Academic Press, 2007.

Presentations

GL Vale, "Coordinating the DNA and pattern analysis studies in bite mark cases", *American Academy of Forensic Sciences, San Antonio, February 2007*

K Young, C Rogers, "Stowaway on an aircraft", *National Association of Medical Examiners, Savannah, Georgia, October 2007*.

L Sathyavagiswaran, "Scene investigation-directed autopsy", *National Association of Medical Examiners, Savannah, Georgia, October 2007*.

Anthony Hernandez
Director

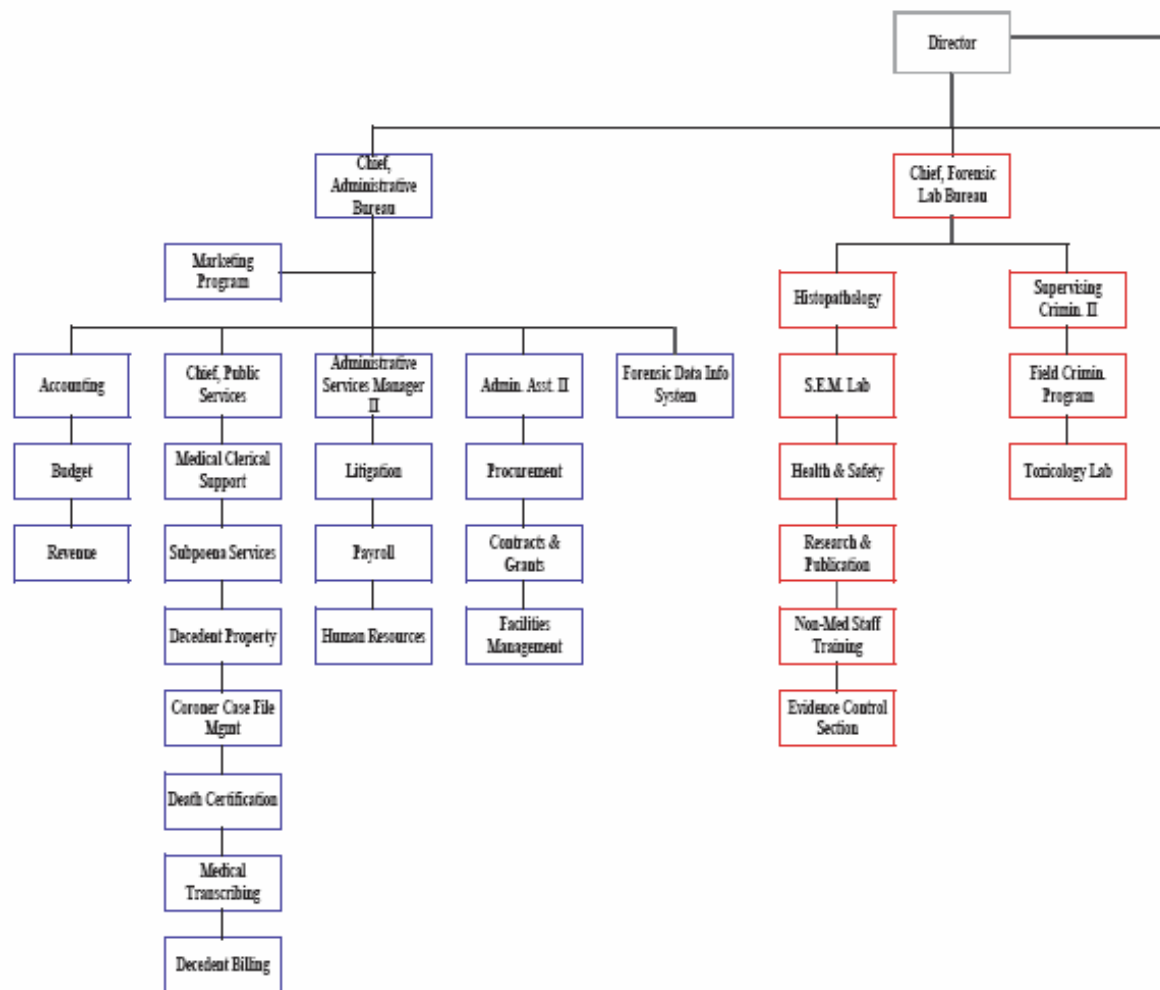
Lakshmanan Sathyavagiswaran, M.D.
Chief Medical Examiner-Coroner



Los Angeles County Department of Coroner Annual Report



2
0
0
7



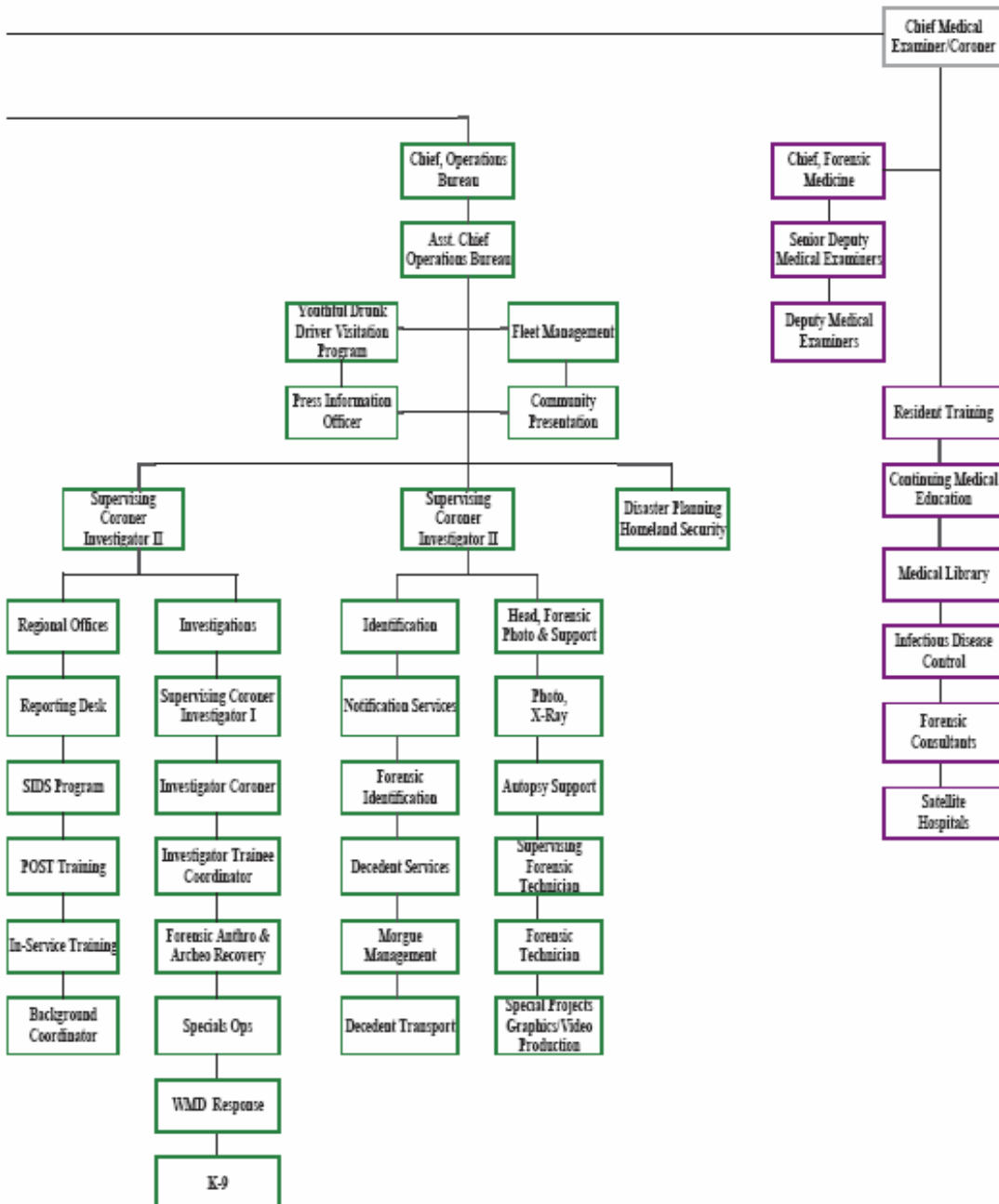
Organizational Chart



Los Angeles County Department of Coroner Annual Report



2
0
0
7



Organizational Chart



Los Angeles County Department of Coroner Annual Report



2
0
0
7

Administrative Services Bureau

Chief, Sarah Ahonima

The Administrative Services Bureau is responsible for all departmental financial operations, departmental budget preparation, fiscal reports, personnel, payroll, litigation, procurement, accounting, revenue collection, marketing, volunteer services, affirmative action, contracts and grants, internal control certification, workfare programs, facilities management, and other related functions.

FISCAL SERVICES

The Accounting section is responsible for all financial transactions performed by the Department of Coroner. All Auditor-Controller guidelines are followed as well as any departmental guidelines governing monetary issues. The section also monitors all departmental accounts, such as salary and benefits, overtime expenditures, services and supplies, and budget.

PROCUREMENT

Procurement is responsible for purchasing equipment, maintenance of buildings, contracts, budgetary support, monitoring of fixed assets, and inventory control.

HUMAN RESOURCES

Human Resources is responsible for personnel issues that are inherent in County government such as benefits, processing examinations, filling vacant positions, litigation, workers compensation, volunteer services, payroll, community support programs such as job fairs, and budgetary support.

MARKETING PROGRAM

"Skeletons in the Closet" has been operating since September 1993. Given the scarcity of resources at that time, revenue generation had to be considered to help offset monetary losses. The intent was to use monies raised to offset some of the costs associated with the youthful Drunk Driver Visitation Program (YDDVP), as well as other Coroner needs. "Skeletons in the Closet" features a complete line of quality souvenir items, such as beach towels, shirts, toe tags, and much more. The items are available to the public via website at LACORONER.COM or by calling (323) 343-0760).

CONTRACT PROGRAMS

The Department administers contracts and agreements for various functions, such as tissue harvesting, regional offices, satellite hospitals, histopathology, transcribing and

Administrative Services Bureau



Los Angeles County Department of Coroner Annual Report



2
0
0
7

Administrative Services Bureau

contract physicians. The staff monitors and studies Department operations in the continuing evaluation of the appropriateness of contracting for other functions.

MORTUARY BILLING PROGRAM

The Department now utilizes the services of the various mortuaries to bill for transportation and storage costs at the time services are billed to the families. This has improved the collection rate, dramatically raising revenues.

FORENSIC DATA INFORMATION SYSTEMS

The mission of Forensic Data Information systems is to enhance and support the Department's long-range goals, mission-critical business goals, and objectives through the administration, project management, and expansion of information technology-related applications and services, including, where appropriate, the delivery of services to agencies referred through appropriate 24/7 e-government technologies.

The FDIS is also responsible for network, database and application administration, preparation of statistics and general client support. The FDIS is responsible to ensure that the Department is in alignment with the County-wide strategic planning effort to conduct County business electronically and maintain compliance with the technological directives as stipulated by the County's Chief Information Officer. The FDIS manages the information technology efforts of subcontracts in the implementation and support of new technologies such as e-commerce content management and voice over internet protocol (VoIP). ▪



Los Angeles County Department of Coroner Annual Report



2
0
0
7

FORENSIC MEDICINE BUREAU

Chief, Christopher Rogers, M.D.

The Forensic Medicine Bureau's full-time permanent staff consists of board-certified forensic pathologists who are responsible for the professional medical investigation and determination of the cause and mode of each death handled by the Department. Our physicians are experts in the evaluation of sudden unexpected natural deaths and unnatural deaths such as deaths from firearms, sharp and blunt force trauma, etc. Physicians are frequently called to court to testify on cause of death, and their medical findings and interpretations, particularly in homicide cases. In addition, the division has consultants in forensic neuropathology, odontology, anthropology, anesthesiology, pediatrics, surgery, ophthalmologic pathology, pulmonary pathology, cardiac pathology, emergency medicine, psychiatry, psychology and radiology to assist the deputy medical examiners in evaluating their cases.



MEDICAL EDUCATION

The Department is approved by the Institute for Medical Quality, a subsidiary of the California Medical Association as a provider of Continuing Medical Education activities.

HEALTH & SAFETY/RISK MANAGEMENT

The Department has implemented an aggressive health & safety committee and risk management program, which has significantly reduced work-related injuries.

ICAN

The Department participates in the interagency Council for Child Abuse and Neglect. This Department is the host of the monthly Child Death Review Committee of ICAN.

IDENTIFICATION OF UNIDENTIFIED BODIES (SB 90)

The Department participates in a State-mandated program to examine dental records and collect appropriate specimens for the identification of John and Jane Does.

Forensic Medicine Bureau



Los Angeles County Department of Coroner Annual Report



2
0
0
7

Forensic Medicine Bureau

MEDICAL EXAMINER-CORONER ALERT PROJECT

The Department of Coroner reports to the Consumer Product Safety Commission all deaths directly from unsafe consumer products.

RESIDENCY PROGRAM

The Medical Division of the Department of Coroner has an Accreditation Council for Graduate Medical Education –approved forensic pathology residency program designed to train deputy medical examiners and prepare them for board certification while performing medical investigations under appropriate supervision.

SCUBA PROGRAM

The Department staff participates in the Los Angeles County Interagency Scuba Committee to investigate and develop programs to prevent future scuba diving fatalities.

TISSUE HARVESTING/ORGAN TRANSPLANTATION

This program provides corneas and other tissues to all in need in our community through coordinated efforts with various tissue banks and hospitals. After family consent is obtained, our medical staff provides review of organ and tissue Procurement in Coroner's cases. In addition, the program makes tissues available to low-income and indigent patients at County hospitals at no cost to the patients or hospitals.

UNIVERSITY HOSPITAL PATHOLOGY RESIDENT TRAINING PROGRAM

We offer the opportunity for pathology residents from local university-affiliated hospital (USC, UCLA and others) to train in our office with costs paid by the hospitals. This program fosters positive relationships with the university hospitals' pathology department and improves the standard of practice of forensic medicine in general, as these pathology residents will be practicing in the community when they finish training. ■



Los Angeles County Department of Coroner Annual Report



2
0
0
7

FORENSIC LABORATORIES BUREAU

Chief, Joseph J. Muto

The Forensic Science Laboratories Bureau is responsible for the identification, collection, preservation, and analysis of physical and medical evidence associated with Coroner's cases. Our mission is to conduct a comprehensive scientific investigation in to the cause and manner of any death within the Coroner's jurisdiction. This is accomplished through the chemical and instrumental analysis of physical and medical evidence. Our goal is to provide our medical examiners, families of decedents, outside investigating agencies, and the judicial system with timely, accurate, and state-of-the art forensic analyses, and to provide expert interpretation of these analyses. The Forensic Laboratory is fully accredited by the prestigious American Society of Crime Laboratory Directors, and our forensic blood alcohol testing program is licensed by the State of California.

CRIMINALISTICS

Our team of specially-trained forensic scientists is on call twenty-four hours a day to respond to crime scenes for the proper documentation, collection and preservation of physical evidence.

HISTOLOGY

This laboratory facilitates the preparation of gross tissue specimens for microscopic examination by the medical staff. This includes hematoxylin and eosin stains, special stains, and immunohistochemical stains. Through the microscopic examination of tissue, our forensic pathologists can determine the age and degree of injury, diagnose disease including cancers, evaluate cellular variation in tissue, and identify the presence of bacterial, medical disorders, and toxins such as asbestos.

TOXICOLOGY

Using state-of-the art equipment and methods, the toxicology laboratory conducts chemical and instrumental analysis on post-mortem specimens to determine the extent to which drugs may have contributed to death.

The laboratory's experienced forensic toxicologists offer expert drug interpretation that assists the medical examiners in answering questions like what drug was taken? How much and when was the drug taken? Did the drug contribute to the cause and/or manner of death? Was the drug use consistent with therapeutic administration, or was it abuse? If the death is due to a drug overdose, was it intentional or accidental?

Forensic Laboratories Bureau



Los Angeles County Department of Coroner Annual Report



2
0
0
7

OPERATIONS BUREAU

Chief, Craig Harvey, F-ABMDI

This Bureau is responsible for the 24-hour-a-day, 7-day-a-week operations of many direct services provided by the Department. The Bureau oversees Investigations and Forensic Services Division. In addition, the Bureau is responsible for disaster planning, homeland security grants, fleet management, public information, and other ancillary programs such as regional offices and the Youthful Drunk Driver Visitation Program (YDDVP).

Coroner's Investigators are also responsible for testimony in court and depositions on Coroner's cases, along with preparation of investigative reports for use in the determination of cause and mode of death. Under State law, all Coroners' Investigators are sworn peace officers. The Coroner's Investigators must meet the same stringent hiring standards as any other California law enforcement agency. The Department of Coroner is a California Peace Officer Standards and Training (POST)-certified agency

IDENTIFICATION OF UNIDENTIFIED BODIES (SB90)

The Department participates in a State-mandated program to examine dental records of known missing persons to aid in the identification of John and Jane Does. In addition, more recent changes in the law have required that DNA specimens be collected from unidentified remains and sent to the State of California DNA lab in Richmond, California.

NURSING HOME DEATHS (SB90)

The Department participates in a State-mandated program to investigate certain nursing home deaths to determine whether a death may be certified as natural by a private physician or handled as a Coroner's case.

PEACE OFFICER STANDARDS AND TRAINING (POST)

The California State Commission on Peace Officer Standards and Training (POST) establishes minimum standards for advanced training that is offered through the Department of Coroner through the annual West Coast Seminar or other specialized training such as Skeletal and Buried Body Recovery. We comply with those standards and all requirements for peace officers in hiring.

REGIONALIZATION-SATELLITE OFFICES

Investigative capabilities have been extended to offices in the Antelope Valley, Santa Clarita Valley, and South Bay areas of Los Angeles County. Efforts are under way to expand regional services to the eastern portion of Los Angeles County. Regional offices provide a more rapid Coroner's response to the scene of death, which results in rapid mitigation of traffic and other public conveyance obstructions.

Operations Bureau



Los Angeles County Department of Coroner Annual Report



2
0
0
7

Operations Bureau

YOUTHFUL DRUNK DRIVER VISITATION PROGRAM (YDDVP)

The Department of Coroner has presented the YDDVP program since 1989 as an alternative sentencing option that can be considered by a judicial officer. The program is designed to present to the participants the consequences of certain behavior in a manner that has an impact and is also educational. The program is currently offered up to 12 times per month and includes classes presented completely in Spanish.

DISASTER PREPAREDNESS AND RESPONSE

This program ensures appropriate Departmental response as one of the lead County agencies in major disasters and significant smaller incidents that involve multiple fatalities requiring successful operation of an Emergency Operations Center (EOC) and field command posts airports, planning and exercises and also through up-to-date manuals. A plan has been developed to form public-private emergency response partnerships with local funeral and cemetery directors for a mass fatality management response system. The Department maintains emergency communications equipment, which includes a command post trailer. County Wide Integrated System (CWIRS) radio communications, a mobile command post, and appropriate ancillary communications equipment. The Department also has eleven disaster cache trailers situated through the County. The Department has emergency short-wave radio communication ability as well.

INVESTIGATIONS

The Investigations Division responds to the scenes of death throughout Los Angeles County twenty-four hours a day, seven days a week. It is the responsibility of the Coroner's Investigator to function as the eyes and ears of the Deputy Medical Examiner, ensure that State law is followed respect to Coroner's cases, and be the advocate for the deceased person. Due to the diverse case load in Los Angeles County, the Coroner's Investigator is in the important position of seeing every death that occurs under other than natural circumstances, and is often the first to identify serial deaths and consumer product safety issues.

SPECIAL OPERATIONS AND RESPONSE TEAM (SORT)

The Department of Coroner has fielded a specialized response unit comprised of Coroner's Investigators, Coroner's Criminalists, and Coroner's consultants in anthropology and archaeology, and as needed, Forensic Attendants and Forensic Photographers.

The SORT team has special purpose vehicles fully equipped to handle certain types of cases thoroughly and as rapidly as possible. The SORT team responds to cases requiring specialized recovery and scene processing techniques such as those required in aircraft crashes, buried bodies, scattered human remains and fires, and also assists law enforcement agencies in general searches for scattered human remains or possible burial sites.



Los Angeles County Department of Coroner Annual Report



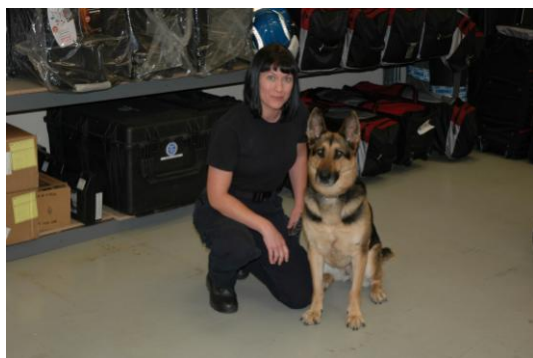
2
0
0
7

FORENSIC SERVICES DIVISION

This Division is responsible for providing direct support in the autopsy room to the deputy medical examiners. Staff duties include, but are not limited to, preparation of the bodies for medical examiners and autopsy, assisting the deputy medical examiners in the performance of the autopsy, preparation and gathering of toxicology specimens, x-ray and photography, and preparation of bodies for release to a mortuary.

The Division is also home to the Forensic Fingerprint Identification Unit that is responsible for post-mortem dental x-rays and specialized fingerprint processing to aid in the identification of Jane, John, and Undetermined Does. Personnel who have been specially trained also fulfill specialized audio-visual and graphic production requirements for the entire Department as well as the courts. Personnel assigned to this unit are responsible for the transportation, processing, storage, and release of bodies that are under the jurisdiction of the Coroner. Bodies may be recovered from any death scene, in almost any environment imaginable, including those in public view, private homes, and hospitals. Decedent processing includes obtaining the height and weight of bodies, the collection, documentation, and safekeeping of personal effects, and to the collection of both physical and medical evidence, fingerprinting of decedents using LIVE-SCAN technology and placement of identification tags on the body. Bodies are maintained in refrigerated crypts while awaiting examination and release to mortuaries or for County cremation.

The Decedent Services Unit is responsible for crypt management of human remains prior to release for photography, x-ray and autopsy. Additionally, staff members are accountable for all human remains and specimens stored in the crypt areas.▪



Operations Bureau



Los Angeles County Department of Coroner Annual Report



2
0
0
7

PUBLIC SERVICES DIVISION

Chief, Silvia Gonzalez

This Division is responsible for Coroner case file management, revenue collection (document sales, decedent billing, etc.), and interaction with the public both telephonically and at the front lobby reception area. In addition to providing information and copies of autopsy reports, Public Services staff offers many services to the public. These services include preparation of "Proof of Death" letters to verify that a death is being investigated by the Coroner, and "Port of Entry" letters to confirm that a decedent had no communicable disease, necessary for the decedent's admission into a foreign country after death.

RECORDS SECTION

Records Section is responsible for Coroner case file control, file retention, document sales, and transportation billing. The Section handles over 2,500 telephone inquiries per month from the public and other agencies requesting information and Coroner's reports. Revenue generated from documents, microscopic slides, photograph sales and transportation billing for a one year period totals over \$1,200,000.

The Coroner is mandated by the California Government Code to retain all files permanently; consequently the Department maintains 100+ years of records that are accessed on a regular basis at the request of the public. Approximately 16,000 pages are copied from compact disk, optical disk and microfilm to fill requests received from the public each year.

DEATH CERTIFICATION & MEDICAL/CLERICAL SECTION

The Section is responsible for the completion and daily issuance of the death certificates to mortuaries, and preparation of amendments stating the final cause of death. Medical/Clerical Section is responsible for reporting SIDS (Sudden Infant Death Syndrome) cases to the State and local health agencies for follow-up by those agencies. This section also provides secretarial and clerical support to the Deputy Medical Examiners.

MEDICAL TRANSCRIBING SECTION

This section is responsible for the transcription of the autopsy report protocols, microscopic slide reports, neuropathology reports, etc. An outside contractor is utilized for routine transcription, and an in-house staff of three full-time employees handles rush, high-priority, and sensitive cases. In a one-year period, over 2,000 cases are transcribed by request of the law enforcement agencies, the families, hospitals, and other outside agencies.

Public Services Division



Los Angeles County Department of Coroner Annual Report



2
0
0
7

PERSONAL PROPERTY SECTION

Personal property of all decedents is brought to the Personal Property Section and safeguarded in a vault until release to the decedent's next of kin. The Department has three Personal Property Custodians who are responsible to receive and inventory the personal effects, contact the next of kin, and arrange for delivery of the personal effects to the decedent's family. The Office of the Public Administrator is consulted when next of kin resides out of State or is unknown. The Custodians are also responsible for disposal of all unclaimed personal effects.

SUBPOENA CONTROL

Approximately 4,000 subpoenas are received and processed by the Public Services Division Subpoena Control Section in a one-year period. This unit is responsible for the scheduling of all Deputy medical Examiners for court appearances, depositions and appointments with law enforcement, Deputy District Attorneys, Public Defender staff, and members of the public. The revenue generated by civil witness fees and collected by this section totals approximately \$55,000 per year. ■



Public Services Division



**Los Angeles County
Department of Coroner
Annual Report**



**2
0
0
7**

Los Angeles County

Death Statistics

Death Statistics



Los Angeles County Department of Coroner Annual Report



2
0
0
7

Death Statistics Table of Contents

Population of Los Angeles County.....	21
Reported and Accepted Cases	22
Final Mode of Coroner's Cases.....	23
Death Rates per 100,000 Population	24
Modes for Child Death	25
Statistics Required by NAME	26
Coroner's Cases by Age	27
Coroner's Cases by Gender	28
Coroner's Cases by Race	29
Mode of Death by Month	30
Racial Distribution for Each Mode	31
Mode Distribution for Each Age Group.....	32
Accidental Deaths	33
Transport Accidents	34
Accidental Falls.....	35
Homicidal Deaths	36
Suicidal Deaths	37
Natural Deaths	38
Circulatory System Disease among Natural Deaths.....	39
Nervous System Disease among Natural Deaths	40
Infectious Diseases among Natural Deaths.....	41
Neoplasms among Natural Deaths	42

Death Statistics Table of Contents

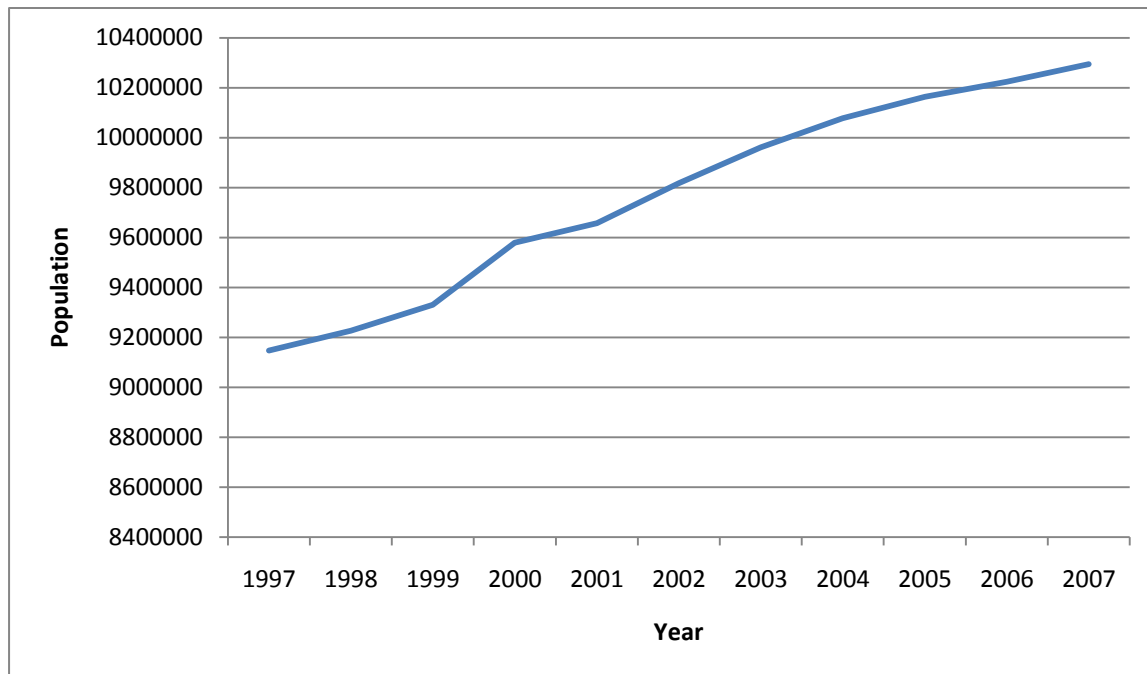


Los Angeles County Department of Coroner Annual Report



2
0
0
7

Population of Los Angeles County, 1997-2007



Population of Los Angeles County

<u>Year</u>	<u>Population</u>
1997	9,147,100
1998	9,225,800
1999	9,330,110
2000	9,579,022
2001	9,656,730
2002	9,816,792
2003	9,961,407
2004	10,077,865
2005	10,163,097
2006	10,223,263
2007	10,294,280

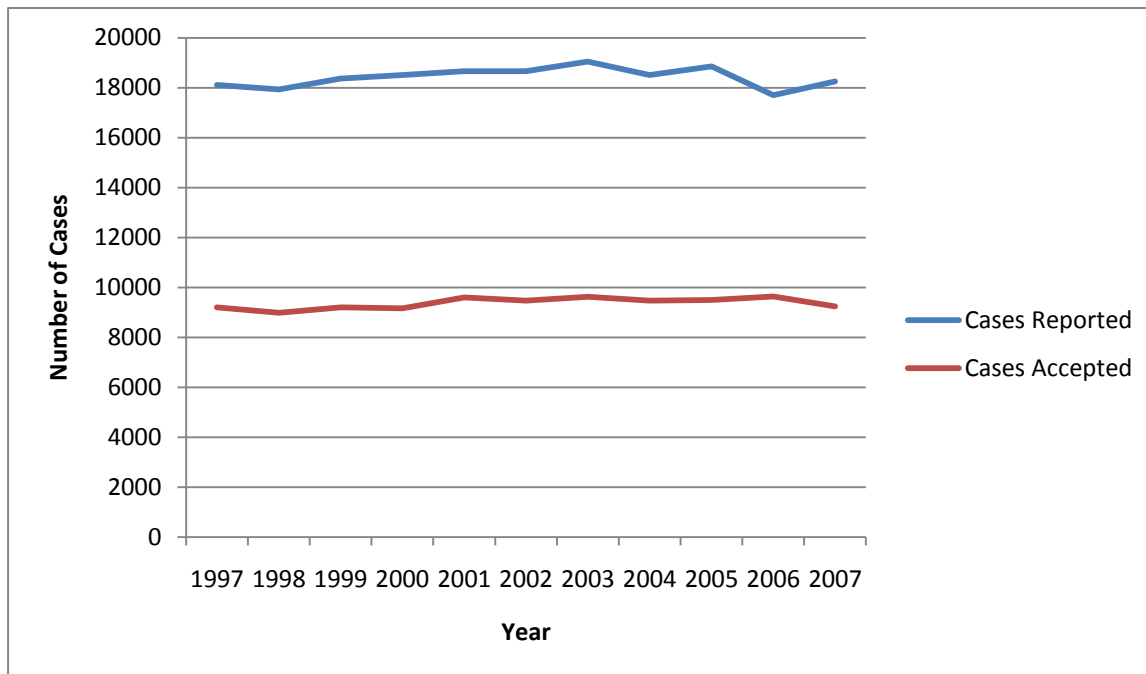


Los Angeles County Department of Coroner Annual Report



2
0
0
7

Number of Reported and Accepted Cases per Year, 1997-2007



Reported and Accepted Cases

<u>Year</u>	<u>Cases Reported</u>	<u>Cases Accepted</u>
1997	18,113	9,202
1998	17,924	8,981
1999	18,362	9,197
2000	18,512	9,156
2001	18,665	9,470
2002	18,665	9,591
2003	19,039	9,620
2004	18,509	9,465
2005	18,854	9,494
2006	17,704	9,637
2007	18,254	9,237

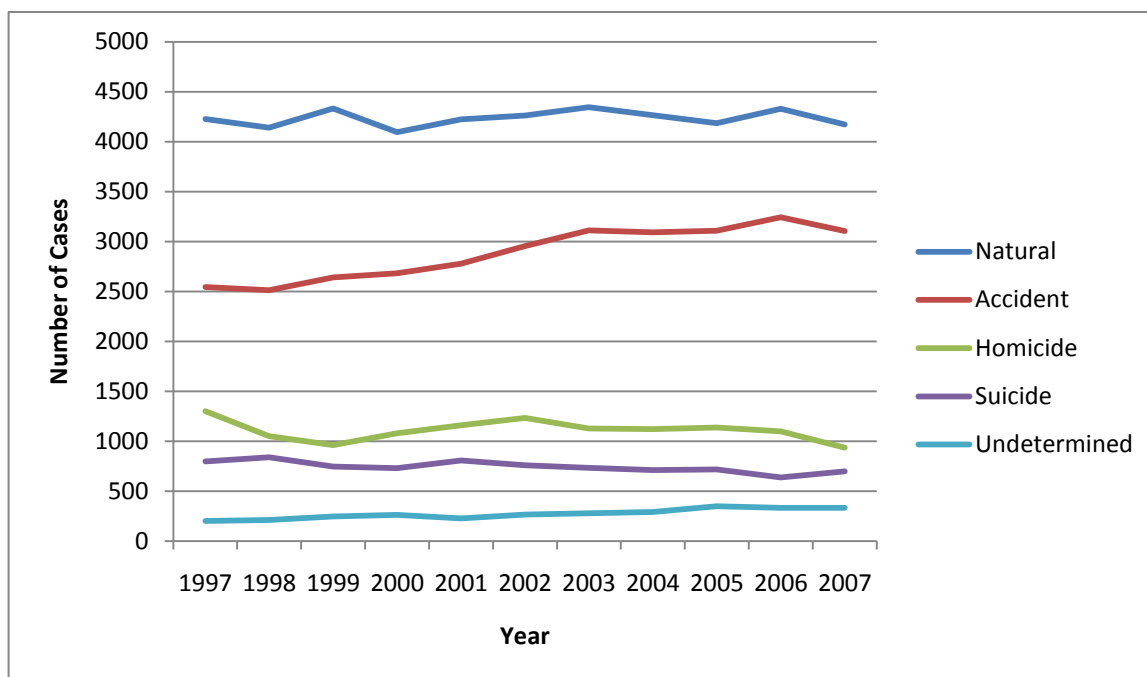


Los Angeles County Department of Coroner Annual Report



2
0
0
7

Final Mode of Coroner's Cases, 1997-2007



<u>Year</u>	<u>Natural</u>	<u>Accident</u>	<u>Homicide</u>	<u>Suicide</u>	<u>Undetermined</u>
1997	4,226	2,542	1,301	798	201
1998	4,139	2,513	1,050	838	210
1999	4,331	2,641	960	744	247
2000	4,094	2,681	1,078	729	263
2001	4,224	2,777	1,159	807	226
2002	4,261	2,955	1,232	757	265
2003	4,344	3,110	1,127	732	279
2004	4,265	3,090	1,121	709	289
2005	4,186	3,106	1,137	716	349
2006	4,330	3,243	1,098	635	331
2007	4,170	3,104	936	696	331

Final Mode of Coroner's Cases

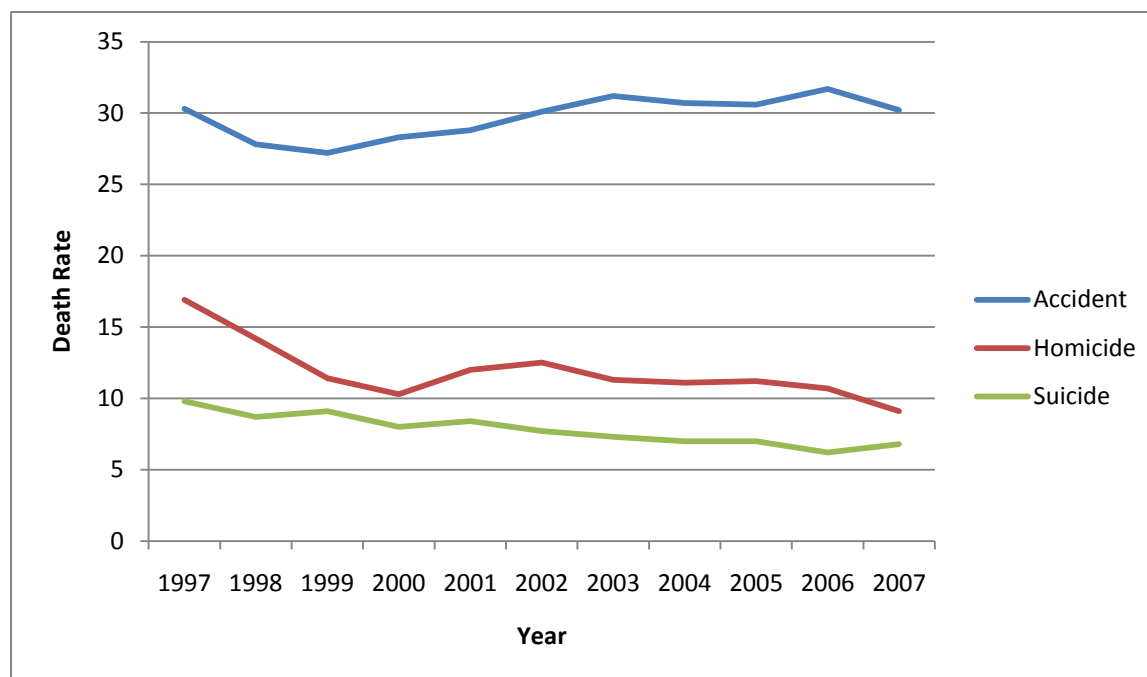


Los Angeles County Department of Coroner Annual Report



2
0
0
7

Death Rates per 100,000 Population, 1997-2007



Death Rates per 100,000 Population

<u>Year</u>	<u>Accident</u>	<u>Homicide</u>	<u>Suicide</u>
1997	30.3	16.9	9.8
1998	27.8	14.2	8.7
1999	27.2	11.4	9.1
2000	28.3	10.3	8.0
2001	28.8	12.0	8.4
2002	30.1	12.5	7.7
2003	31.2	11.3	7.3
2004	30.7	11.1	7.0
2005	30.6	11.2	7.0
2006	31.7	10.7	6.2
2007	30.2	9.1	6.8

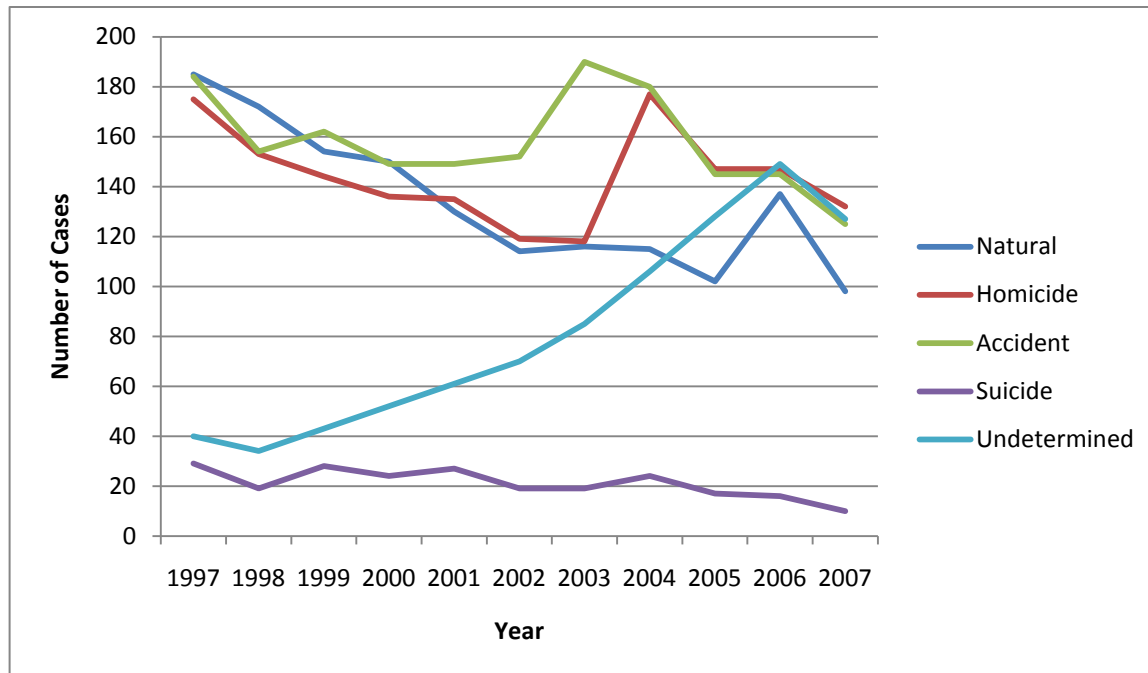


Los Angeles County Department of Coroner Annual Report



2
0
0
7

Modes for Child Death (Ages under 18), 1997-2007



<u>Year</u>	<u>Natural</u>	<u>Homicide</u>	<u>Accident</u>	<u>Suicide</u>	<u>Undetermined</u>
1997	185	175	184	29	40
1998	172	153	154	19	34
1999	154	144	162	28	43
2000	150	136	149	24	52
2001	130	135	149	27	61
2002	114	119	152	19	70
2003	116	118	190	19	85
2004	115	177	180	24	106
2005	102	147	145	17	128
2006	137	147	145	16	149
2007	98	132	125	10	127

Modes for Child Death



Los Angeles County Department of Coroner Annual Report



2007

Statistics Required by National Association of Medical Examiners, 2007

Number of deaths reported:	18254
Number of cases accepted:	9237
Number of cases by manner of death:	
Accident:	3104
Homicide:	936
Natural:	4170
Suicide:	696
Undetermined:	331
Scene visits:	3513
Number of bodies transported:	700
External examinations:	
By physician:	2353
By investigator:	2282
Partial autopsies:	379
Complete autopsies:	4223
Hospital autopsies under ME jurisdiction:	9
Cases where toxicology was performed:	5350
Bodies unidentified after examination:	15
Organ and tissue donations:	
Total transplanted organs:	404
Total tissues donated:	306
Unclaimed bodies:	655
Exhumations:	3

Statistics Required by National Association of Medical Examiners

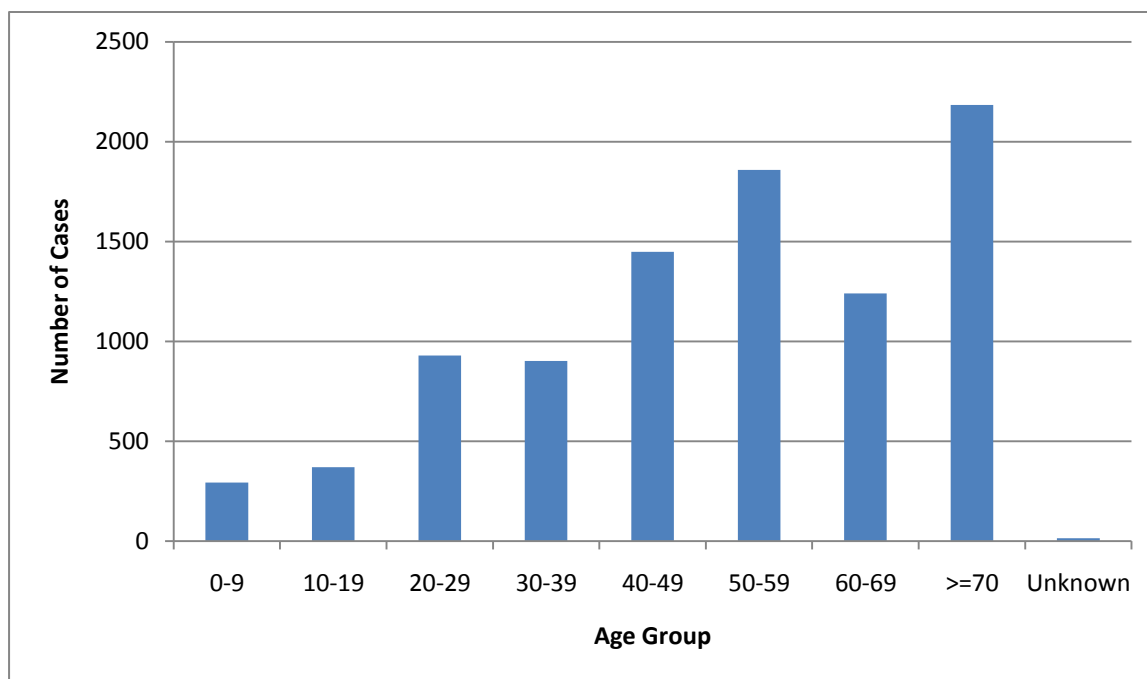


Los Angeles County Department of Coroner Annual Report



2
0
0
7

Number of Coroner's Cases by Age, 2007



Age	Number of Cases
0-9	293
10-19	369
20-29	929
30-39	902
40-49	1448
50-59	1859
60-69	1239
>=70	2184
Unknown	14

Coroner's Cases by Age

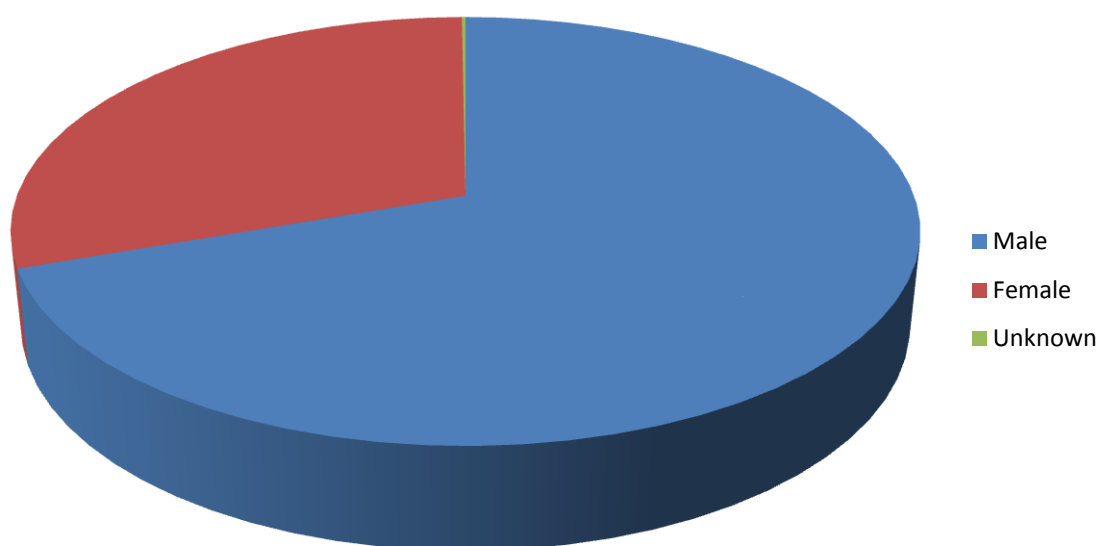


Los Angeles County Department of Coroner Annual Report



2
0
0
7

Coroner's Cases by Gender



Coroner's Cases by Gender

<u>Gender</u>	<u>Number of Cases</u>
Male	6433
Female	2790
Unknown	14

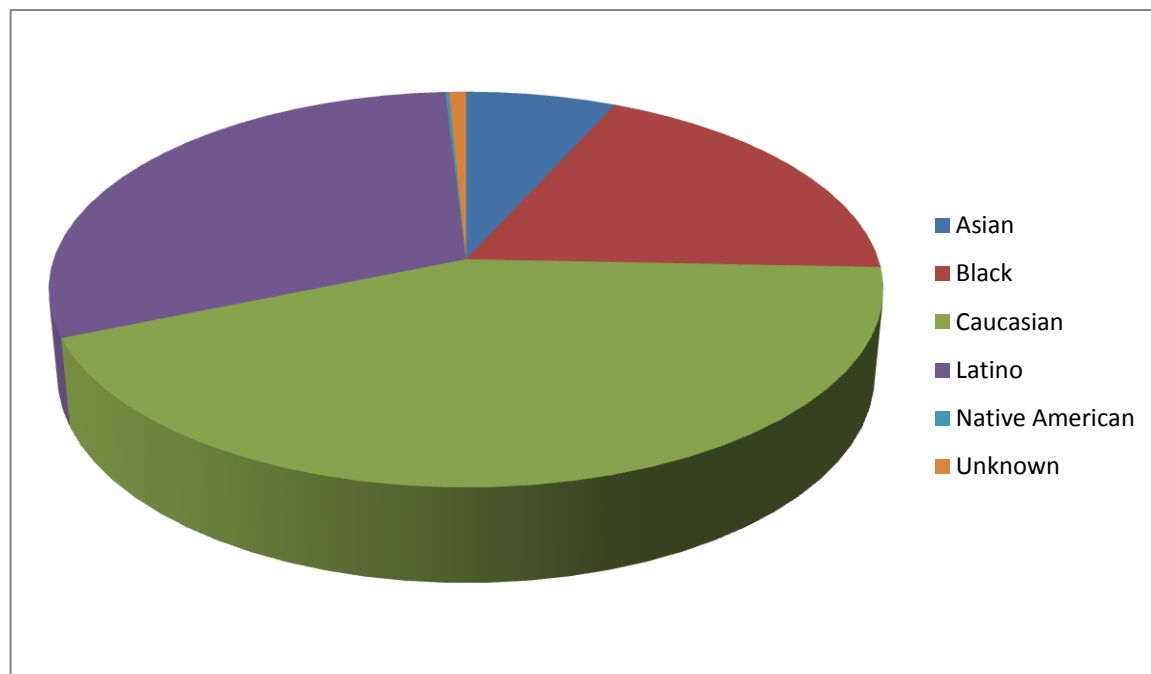


Los Angeles County Department of Coroner Annual Report



2
0
0
7

Coroner's Cases by Race, 2007



Coroner's Cases by Race

<u>Race</u>	<u>Number of Cases</u>
Asian	624
Black	1744
Caucasian	3980
Latino	2804
Native American	15
Unknown	70

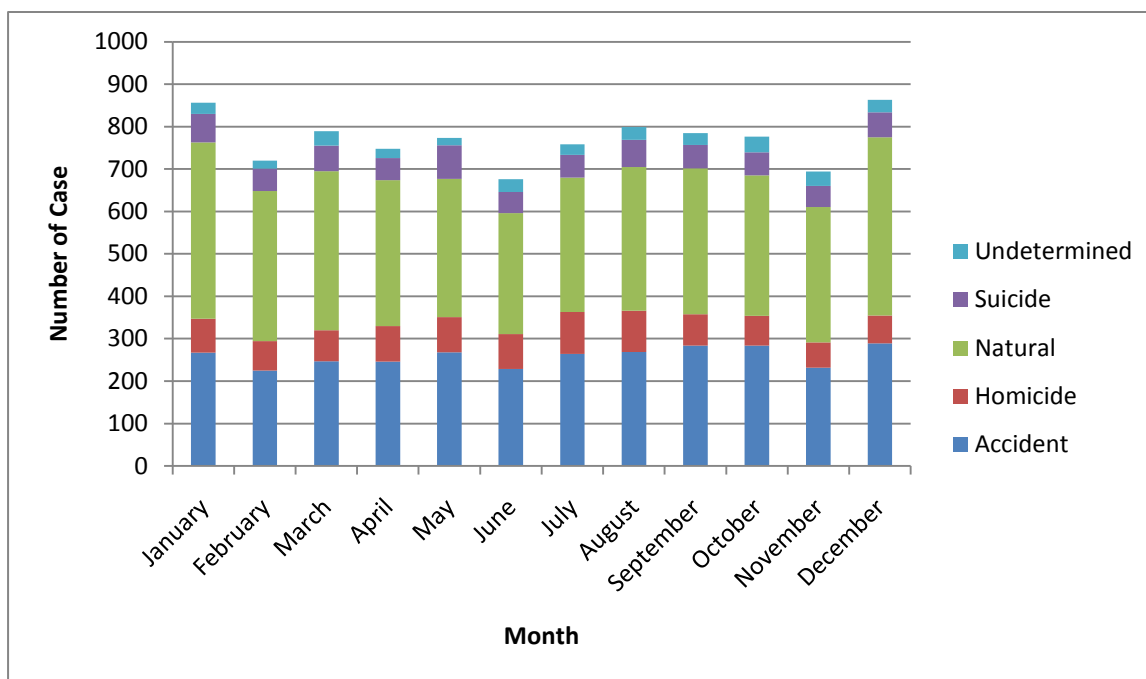


Los Angeles County Department of Coroner Annual Report



2
0
0
7

Mode of Death by Month, 2007



Mode of Death by Month

<u>Month</u>	<u>Accident</u>	<u>Homicide</u>	<u>Natural</u>	<u>Suicide</u>	<u>Undetermined</u>	<u>Total</u>
January	267	80	416	67	26	856
February	225	69	354	53	19	720
March	247	73	375	60	34	789
April	246	84	344	52	22	748
May	268	83	326	79	17	773
June	229	82	285	50	30	676
July	264	99	317	53	25	758
August	269	97	339	64	30	799
September	284	74	344	55	28	785
October	284	70	331	54	37	776
November	232	59	319	50	34	694
December	289	66	420	59	29	863

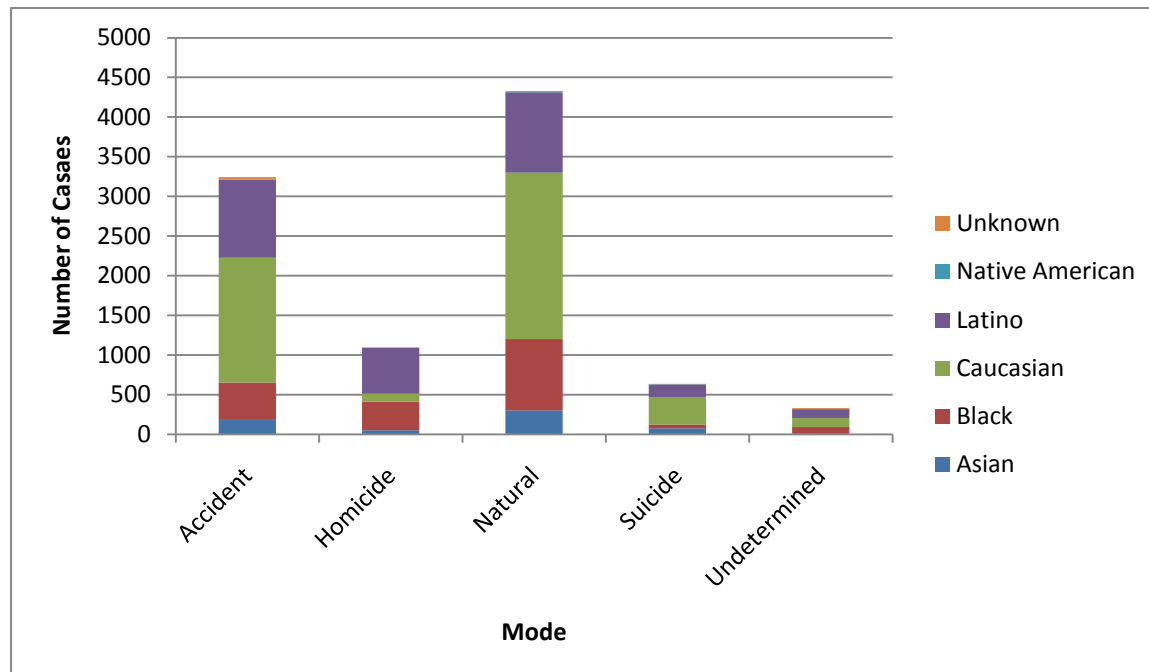


Los Angeles County Department of Coroner Annual Report



2
0
0
7

Racial Distribution for Each Mode, 2007



Racial Distribution for Each Mode

	<u>Accident</u>	<u>Homicide</u>	<u>Natural</u>	<u>Suicide</u>	<u>Undetermined</u>	<u>Total</u>
Asian	197	31	302	76	18	624
Black	457	302	868	52	65	1744
Caucasian	1426	96	1984	401	123	3980
Latino	998	499	1037	160	110	2804
Native American	5	0	8	1	1	15
Unknown	21	8	21	6	14	70

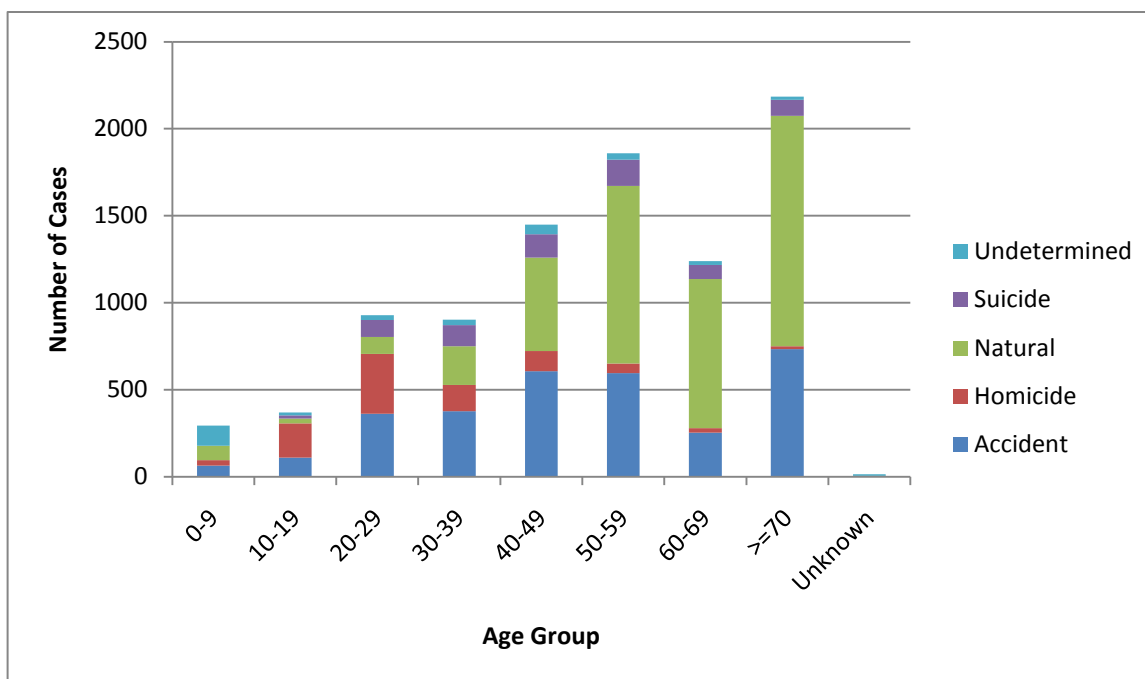


Los Angeles County Department of Coroner Annual Report



2
0
0
7

Mode Distribution for Each Age Group, 2007



	<u>Accident</u>	<u>Homicide</u>	<u>Natural</u>	<u>Suicide</u>	<u>Undetermined</u>
0-9	64	31	82	0	116
10-19	110	196	28	19	16
20-29	362	343	99	97	28
30-39	377	151	222	121	31
40-49	606	117	537	133	55
50-59	595	56	1020	152	36
60-69	254	25	857	81	22
>=70	734	16	1324	92	18
Unknown	2	1	1	1	9

Mode Distribution for Each Age Group

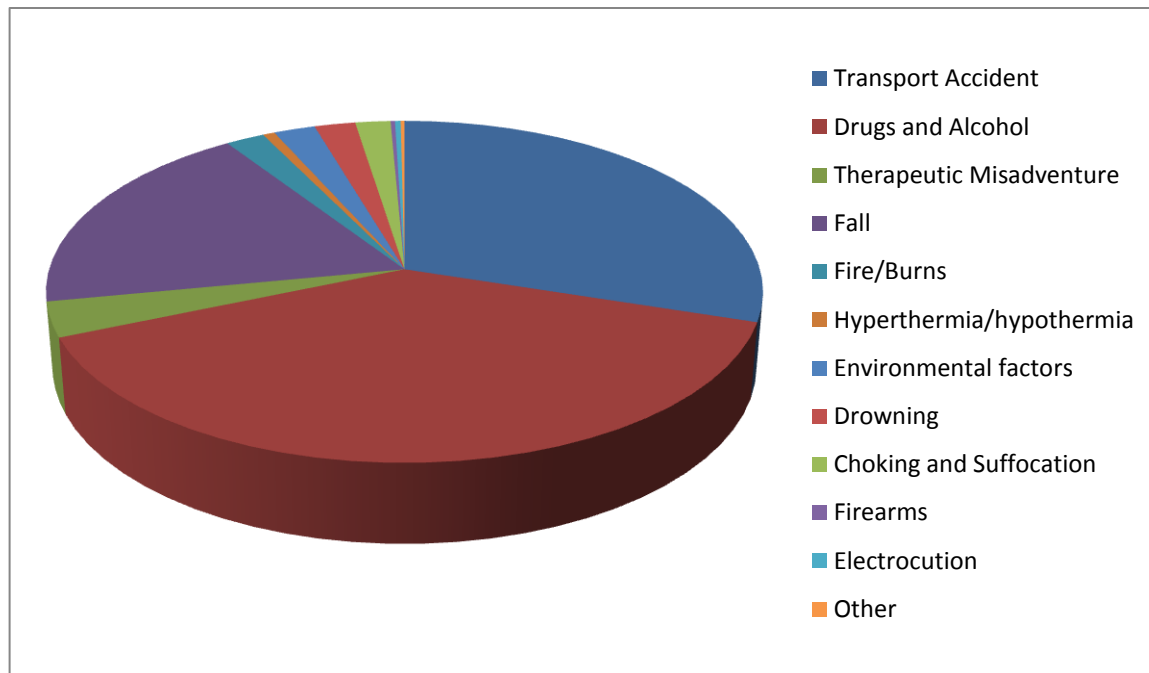


Los Angeles County Department of Coroner Annual Report



2
0
0
7

Accidental Deaths, 2007



Type of Accident	Number of Cases
Transport Accident	928
Drugs and Alcohol	1204
Therapeutic Misadventure	103
Fall	579
Fire/Burns	62
Hyperthermia/hypothermia	19
Environmental factors	66
Drowning	65
Choking and Suffocation	56
Firearms	7
Electrocution	9
Other	6
Total	3104

Accidental Deaths



Los Angeles County Department of Coroner Annual Report



2
0
0
7

Transportation Accidents, 2007

Pedestrians

Collision with car, pick-up truck, or van	249
Collision with pedal cycle or motorcycle	1
Collision with heavy transport vehicle or bus	14
Collision with railway train or railway vehicle	6
Other and unspecified transport accidents	6
Total pedestrians	276

Pedal Cyclists

Collision with car, pick-up truck, or van	22
Collision with heavy transport vehicle or bus	2
Collision with fixed or stationary objects	3
Fall from pedal cycle	3
Total pedal cyclists	30

Motorcycle Riders

Collision with motorcycle	3
Collision with car, pick-up truck, or van	62
Collision with heavy transport vehicle or bus	5
Collision with fixed or stationary objects	32
Non-collision accident (fell or thrown)	9
Other and unspecified transport accidents	4
Total motorcycle riders	115

Car Occupants

Collision with car, pick-up truck, or van	209
Collision with heavy transport vehicle or bus	21
Collision with railway train or railway vehicle	4
Collision with fixed or stationary objects	135
Non-collision accident (fell or thrown)	64
Other and unspecified transport accidents	4
Total car occupants	437

Other Transport Accidents

Occupant of pick-up truck or van	29
Occupant of heavy transport vehicle	11
Occupant of bus	3
Fall from horse	3
Specialized industrial vehicle	1
Off-road vehicle	4
Watercraft	3
Aircraft	3
Other and unspecified transport accidents	13
Total other transport accidents	70

Total Transportation Accidents:	928
--	------------

Transportation Accidents



Los Angeles County Department of Coroner Annual Report



2
0
0
7

Accidental Falls, 2007

Fall on same level from slipping, tripping and stumbling	454
Fall involving skateboard or snowboard	3
Fall while being carried or supported by other persons	1
Fall involving wheelchair	4
Fall involving bed	17
Fall involving chair	7
Fall involving other furniture	3
Fall on or from stairs and steps	37
Fall on and from ladder	13
Fall from scaffolding	3
Fall from, out of or through building or structure	23
Fall from tree	4
Fall from cliff	3
Diving into water causing injury other than drowning	1
Other fall from one level to another	5
Other fall on same level	1
Total Falls	579

Accidental Falls

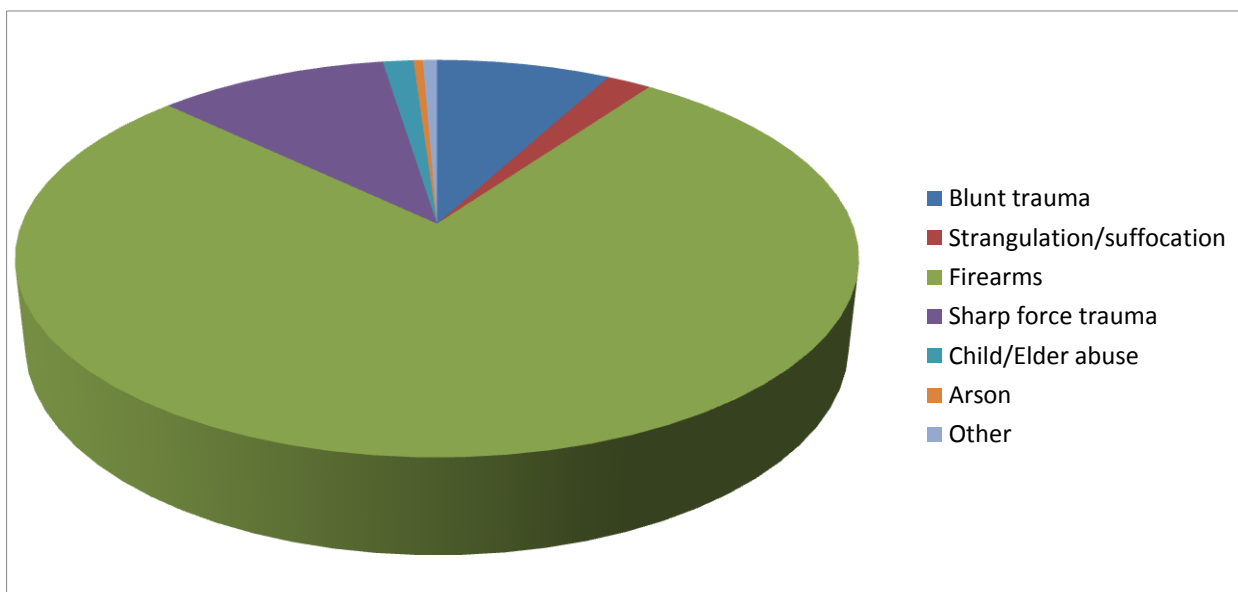


Los Angeles County Department of Coroner Annual Report



2
0
0
7

Homicidal Deaths, 2007



Homicidal Deaths

<u>Method of Homicide</u>	<u>Number of cases</u>
Blunt trauma	74
Strangulation/suffocation	19
Firearms	722
Sharp force trauma	98
Child/Elder abuse	13
Arson	4
Other	6
Total	936

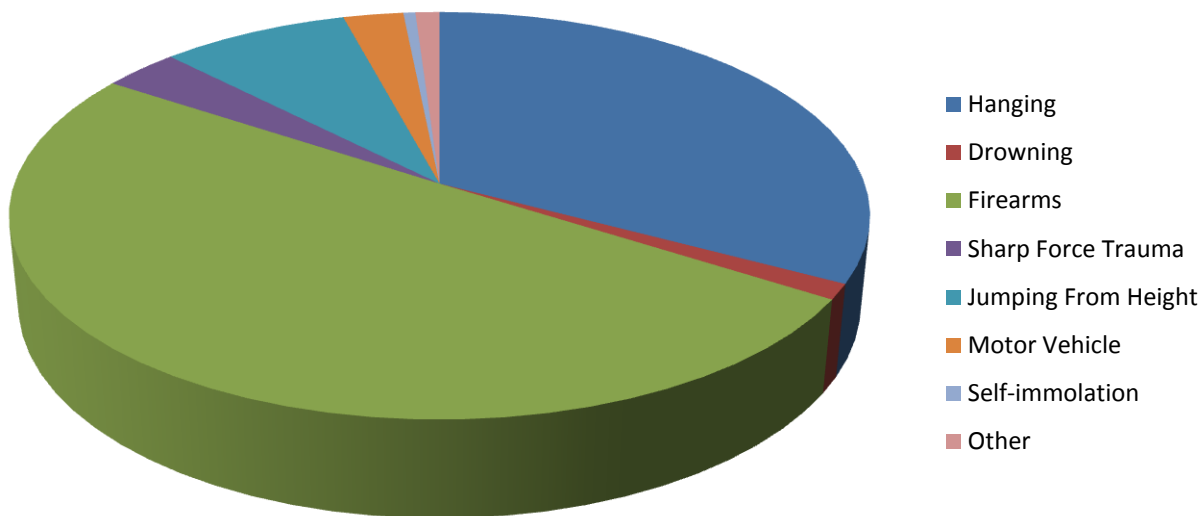


Los Angeles County Department of Coroner Annual Report



2
0
0
7

Suicidal Deaths, 2007



Suicidal Deaths

Method of Suicide	Number of Cases
Overdose	125
Hanging	187
Drowning	7
Firearms	287
Sharp Force Trauma	19
Jumping From Height	47
Motor Vehicle	15
Self-immolation	3
Other	6
Total	696

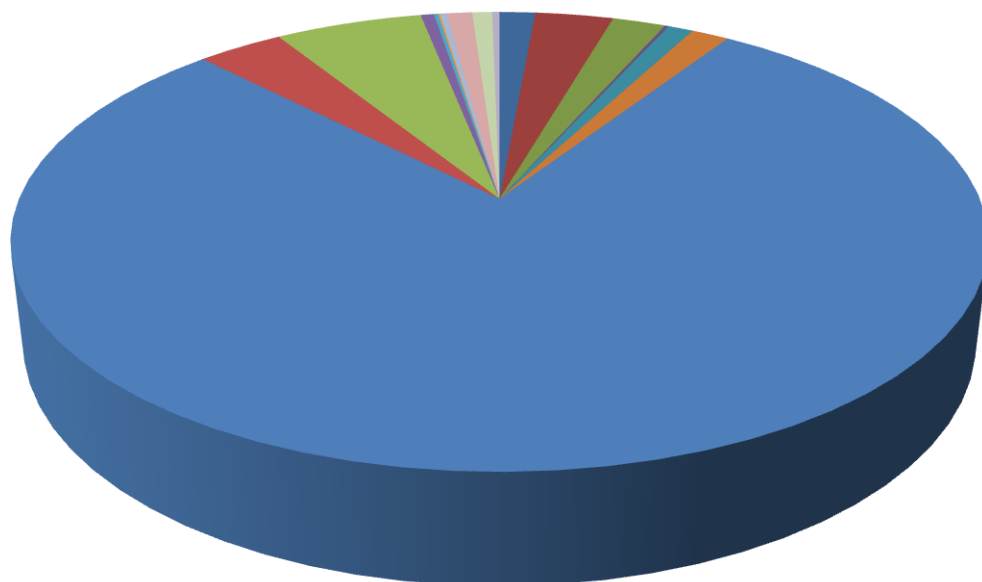


Los Angeles County Department of Coroner Annual Report



2
0
0
7

Natural Deaths, 2007



- | | |
|--------------------------------------|--------------------------------|
| ■ Infectious and Parasitic | ■ Neoplasms |
| ■ Endocrine/Metabolic/Nutritional | ■ Blood/Blood-Forming Organs |
| ■ Psychiatric Conditions | ■ Nervous System |
| ■ Circulatory System | ■ Respiratory System |
| ■ Gastrointestinal System | ■ Genitourinary System |
| ■ Conditions of Pregnancy/Childbirth | ■ Skin and Subcutaneous Tissue |
| ■ Musculoskeletal System | ■ Congenital Anomalies |
| ■ Perinatal Conditions | ■ Other Conditions |

<u>Category</u>	<u>Number of Cases</u>
Infectious and Parasitic	59
Neoplasms	129
Endocrine/Metabolic/Nutritional	88
Blood/Blood-Forming Organs	6
Psychiatric Conditions	42
Nervous System	62
Circulatory System	3269
Respiratory System	142
Gastrointestinal System	243
Genitourinary System	22
Conditions of Pregnancy/Childbirth	7
Skin and Subcutaneous Tissue	3
Musculoskeletal System	11
Congenital Anomalies	42
Perinatal Conditions	33
Other Conditions	12
Total	4170



Los Angeles County
Department of Coroner
Annual Report



2
0
0
7

Circulatory System Disease among Natural Deaths, 2007

<u>Condition</u>	<u>Number of Cases</u>
Amyloidosis	1
Aneurysms	
Cerebral	120
Aortic	45
Other arteries	3
Arteriosclerotic disease	2448
Cardiomyopathy	
Alcoholic	9
Dilated	32
Hypertrophic	133
Endocardial fibroelastosis	1
Idiopathic	68
Right ventricular dysplasia	6
Cerebral hemorrhage/infarction	95
Endocarditis	6
Esophageal varices	8
Hypertensive disease	214
Myocarditis	10
Pericarditis	5
Pulmonary hypertension	2
Rheumatic heart disease	2
Thromboangiitis obliterans	1
Thrombosis/embolism	46
Valvular disease	
Aortic valve disease	2
Mitral valve disease	8
Cardiac arrest/heart failure	5
Total	3269

Circulatory System Disease among Natural Deaths



Los Angeles County
Department of Coroner
Annual Report



2
0
0
7

Nervous System Disease among Natural Deaths, 2007

<u>Cause of Death</u>	<u>Number of Cases</u>
Alzheimer Disease	3
Amyotrophic lateral sclerosis	2
Cerebral abscess	2
Cerebral palsy	3
Dystonia	1
Epilepsy	31
Guillain-Barré syndrome	1
Herpes simplex encephalitis	1
Hydrocephalus	1
Meningitis	5
Meningoencephalitis	2
Multiple sclerosis	1
Multiple system atrophy	1
Muscular dystrophy	3
Parkinson Disease	2
Pick Disease	1
Sleep apnea	2
Total	62

Nervous System Disease among Natural Deaths



Los Angeles County
Department of Coroner
Annual Report



2
0
0
7

Infectious Diseases among Natural Deaths, 2007

<u>Cause of Death</u>		<u>Number of Cases</u>
Bacterial infections:	<i>Salmonella typhi</i>	1
	<i>Clostridium difficile</i>	4
	<i>Mycobacterium tuberculosis</i>	1
	<i>Streptococcus</i>	2
	<i>Pasturella</i>	1
	<i>Listeria</i>	1
	Unspecified bacteria	1
Viral infections:	Hepatitis B	1
	Hepatitis C	9
	Human immunodeficiency virus	26
Fungal infections:	<i>Coccidioides</i>	2
	<i>Aspergillus</i>	2
	<i>Cryptococcus</i>	2
	Unspecified fungus	1
Other infections:	Malaria	1
	Cysticercosis	2
	Enteritis, unspecified organism	2
Total		59

Infectious Disease among Natural Deaths



Los Angeles County Department of Coroner Annual Report



2
0
0
7

Neoplasms among Natural Deaths, 2007

<u>Primary Site</u>	<u>Number of Cases</u>
Bladder	2
Bone	1
Brain	4
Breast	7
Colon	6
Craniopharyngioma	1
Esophagus	1
Leukemia	7
Liver	12
Lung	25
Lymphoma	7
Melanoma	2
Meninges	1
Mesothelioma	11
Myelodysplastic disorder	1
Myeloproliferative disorder	1
Myeloma	1
Nasopharynx	1
Oral cavity	4
Ovary	6
Pancreas	8
Pituitary	1
Prostate	3
Rectum	1
Retroperitoneum/peritoneum	4
Stomach	4
Thyroid	3
Uterus	4
Total	129

Neoplasms among Natural Deaths



Los Angeles County

Toxicology Statistics



Los Angeles County Department of Coroner Annual Report



2
0
0
7

Table of Contents for Toxicology Statistics

Drugs Detected by Mode.....	45
Marijuana Detected by Mode.....	45
Cocaine (Benzoyllecgonine) Detected by Mode	46
Methamphetamine Detected by Mode.....	46
Heroin (6-monoacetylmorphine) Detected by Mode	47
Phencyclidine Detected by Mode.....	47
Drugs by Classification	48
Alcohol Detected by Mode	49
Alcohol Detected by Year	49

Table of Contents for Toxicology Statistics

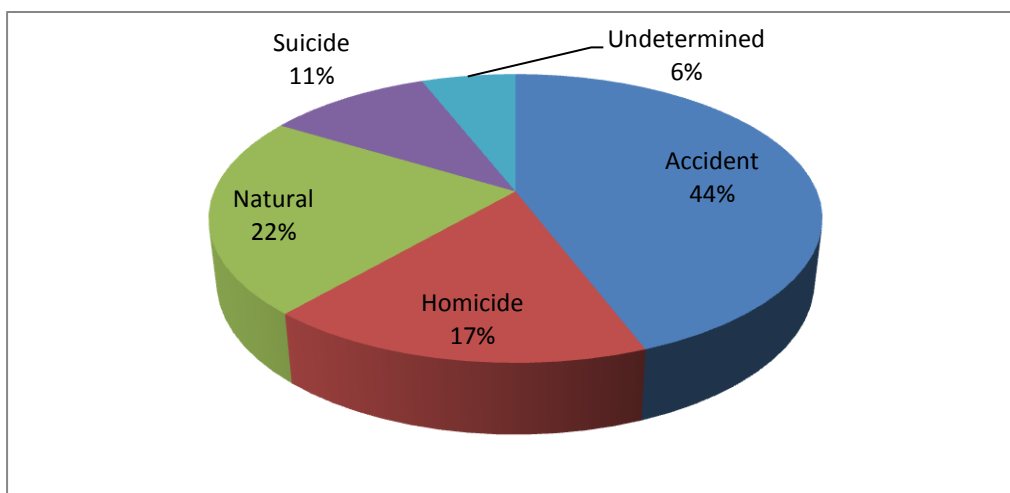


Los Angeles County Department of Coroner Annual Report



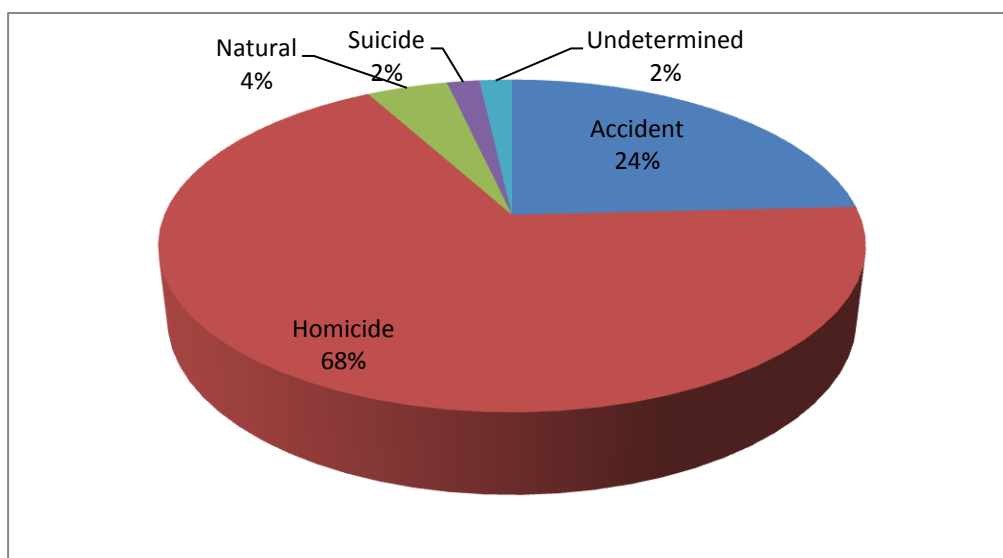
2007

2007 Number of Cases with Drugs Detected by Mode Total Cases of 3,768



Accident – 1666 Homicide – 647 Natural – 840 Suicide – 391 Undetermined – 224

2007 Marijuana Detected by Mode Total Cases of 562



Accident - 136 Homicide - 381 Natural - 25 Suicide - 10 Undetermined - 10

Toxicology Statistics

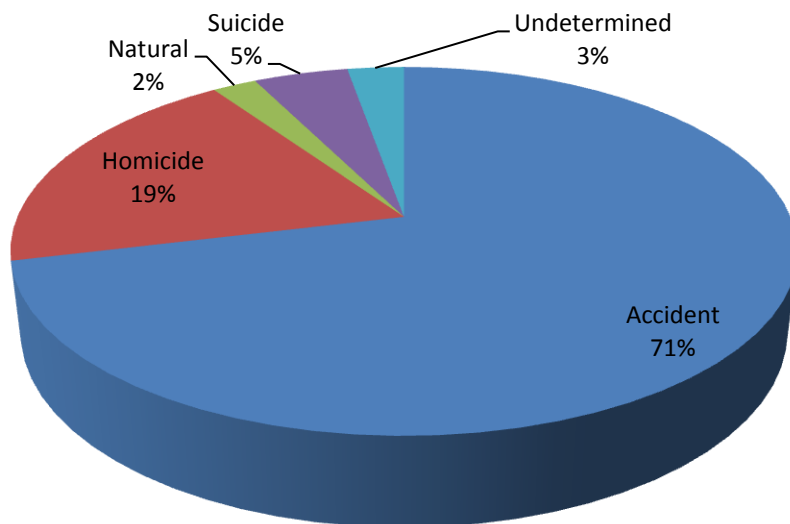


Los Angeles County Department of Coroner Annual Report



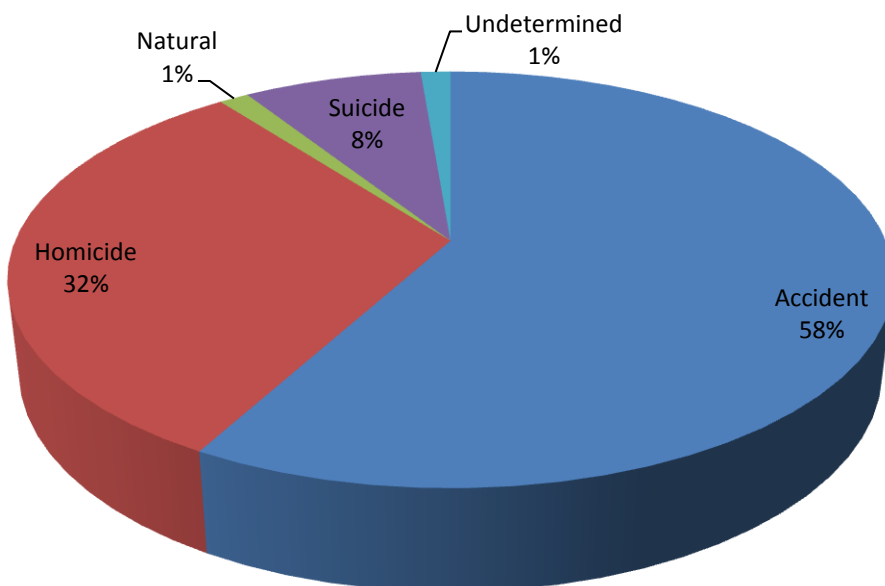
2
0
0
7

2007 Cocaine (Benzoyllecgonine) Detected by Mode Total Cases of 646



Accident – 460 Homicide – 124 Natural – 14 Suicide – 30 Undetermined - 18

2007 Methamphetamine Detected by Mode Total Cases of 462



Accident – 268 Homicide – 146 Natural – 6 Suicide – 36 Undetermined - 6

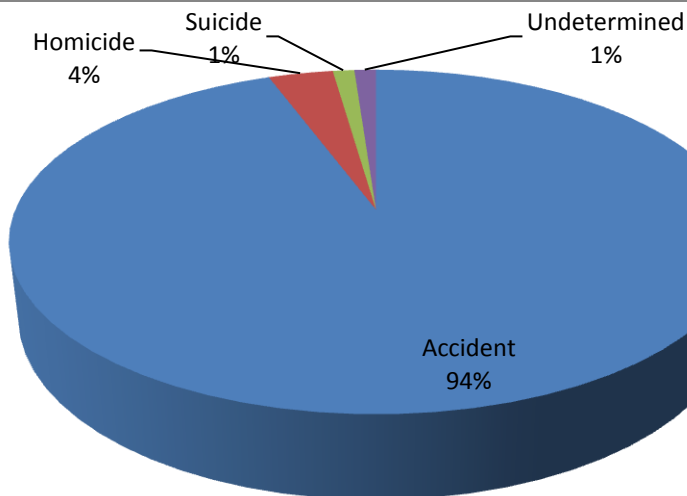


Los Angeles County Department of Coroner Annual Report



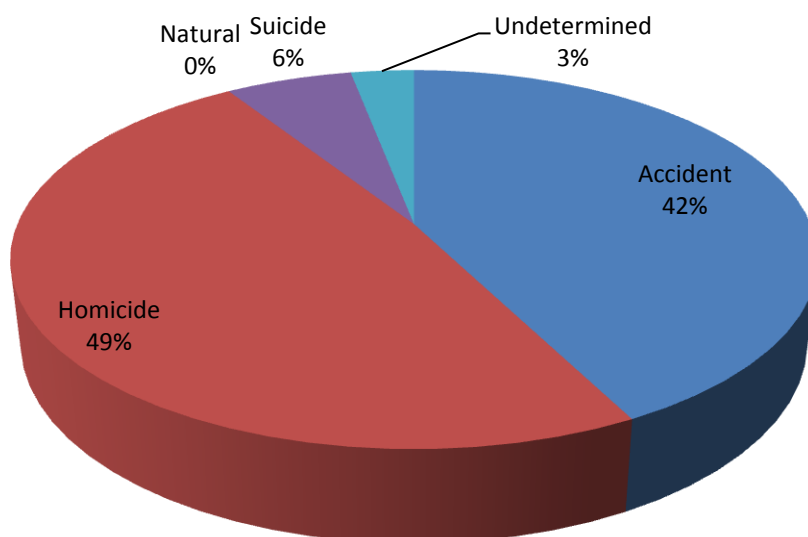
2
0
0
7

2006 Heroin (6-monoacetyl morphine) Detected by Mode Total Cases of 264



Accident – 249 Homicide – 9 Suicide – 3 Undetermined - 1

2007 Phencyclidine Detected by Mode Total Cases of 33



Accident – 14 Homicide – 16 Natural – 0 Suicide – 2 Undetermined - 1

Toxicology Statistics

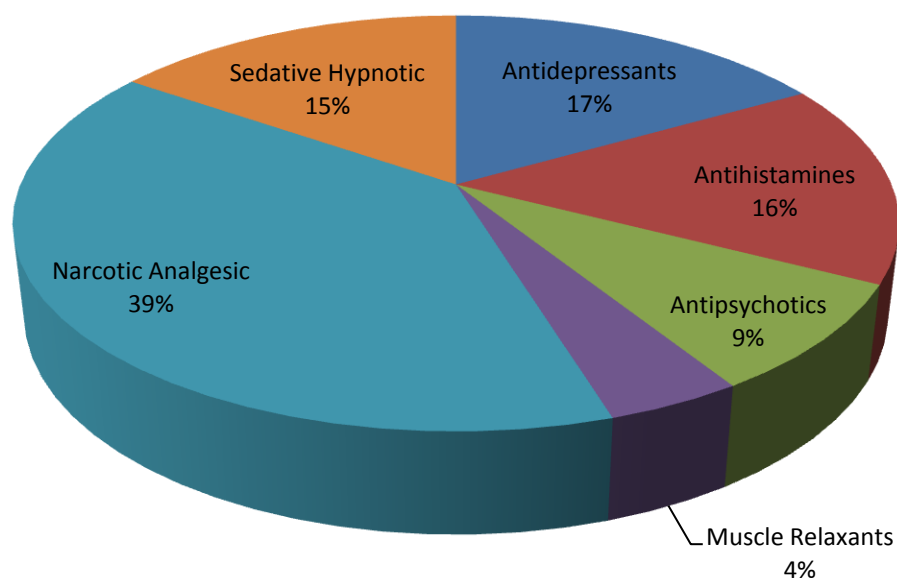


Los Angeles County Department of Coroner Annual Report



2
0
0
7

2007 Drugs by Classification Total Cases of 2660



Antidepressants – 446 Antihistamines – 420 Antipsychotics – 225
Muscle Relaxants – 112 Narcotic Analgesic – 1047 Sedative Hypnotic - 410

Toxicology Statistics

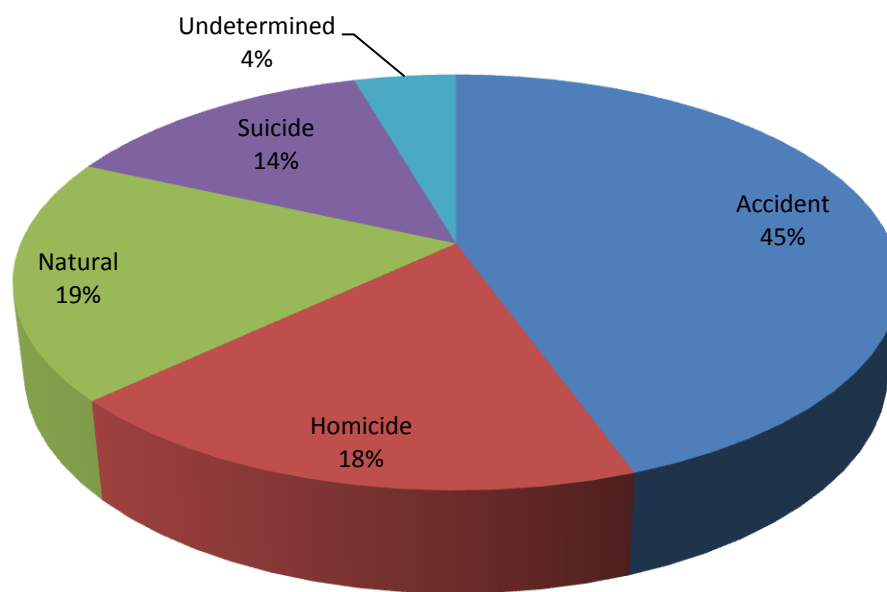


Los Angeles County Department of Coroner Annual Report



2
0
0
7

2007 Alcohol Detected by Mode Total Cases of 1505



Accident – 670 Homicide – 278 Natural – 283 Suicide – 207 Undetermined – 67

2001-2007 Alcohol Detected by Year

