

2014



LOS ANGELES COUNTY DEPARTMENT OF MEDICAL EXAMINER-CORONER ANNUAL REPORT

Law and Science Serving the Community

Los Angeles County Board of Supervisors



Gloria Molina
Supervisor, First District
Mark Ridley Thomas
Supervisor, Second District
Zev Yaroslavsky
Supervisor, Third District
Don Knabe
Supervisor, Fourth District
Michael D. Antonovich
Supervisor, Fifth District

Los Angeles County Department of Medical Examiner-Coroner Annual Report

2014

TABLE OF CONTENTS

Presentations	4
FORENSIC MEDICINE BUREAU	5
FORENSIC SCIENCES LABORATORIES DIVISION	7
OPERATIONS BUREAU	9
ADMINISTRATIVE SERVICES BUREAU	12
PUBLIC SERVICES DIVISION	14
Population of Los Angeles County, 2004-2014	16
Number of Reported and Accepted Cases per Year, 2004-2014	17
Final Manner of Coroner's Cases, 2004-2014	18
Death Rates per 100,000 Population, 2004-2014	19
Manner for Child Deaths (Ages under 18), 2004-2014	20
Statistics Required by National Association of Medical Examiners	21
Number of Coroner's Cases by Age	22
Coroner's Cases by Gender	23
Coroner's Cases by Race	24
Manner of Death by Month	25
Racial Distribution for Each Manner	26
Manner Distribution for Each Age (Years) Group	27
Accidental Deaths	28
Transportation Accidents	29
Accidental Falls	30
Homicidal Deaths	31
Suicidal Deaths	32
Natural Deaths	33
Circulatory System Disease Among Natural Deaths	34
Nervous System Disease Among Natural Deaths	35
Infectious Diseases Among Natural Deaths	36
Neoplasms Among Natural Deaths	37

Los Angeles County Department of Medical Examiner-Coroner Annual Report

2014

All Cases with Drugs Detected by Manner.....	38
Alcohol Detected by Manner	39
Marijuana Detected by Manner.....	39
Cocaine Detected by Manner	40
Methamphetamine Detected by Manner.....	40
Heroin Detected by Manner	41
Phencyclidine Detected by Manner.....	41
Fentanyl Detected by Manner	42

Presentations

This report contains statistical information from the Los Angeles County Department of Medical Examiner-Coroner for the year 2014, as well as selected statistics from the previous ten years.

Presentations

P Marquez, D Terashita, L Mascola, C Rogers, Knocking on Death's Door: Use of Automated Coroner Data to Improve Public Health Unusual Death Surveillance System for Reportable Disease Deaths, Council of State and Territorial Epidemiologists, Nashville TN, June 2014.

M Tadlock, K Chouliaras, M Kennedy, P Talving, O Okoye, H Aksoy, E Karamanos, L Zheng, C Rogers, T Noguchi, D Demetriades, The Origin of Fatal Pulmonary Emboli: A Post Mortem Analysis of 500 Deaths From Pulmonary Embolism in Trauma, Surgical and Medical Patients, Pacific Coast Surgical Association, Dana Point CA, February 2014.

O Pleitez, Oral Presentation, "How Chirality Affects your High", West Coast Training Conference, North Hollywood CA, April 2014.

F Antelo, C Rogers, Death by Flare Gun: An Unusual Case of Suicide, National Association of Medical Examiners, Portland OR September 2014.

F Antelo, Death and the Art of Frida Kahlo: Illustrations of Forensic Pathology, National Association of Medical Examiners, Portland OR September 2014.

N Ellis, M Fajardo, C Rogers, Y Wang, Sudden Death due to Retroperitoneal Hemorrhage: 25 Years' Experience at the Los Angeles County Medical Examiner's Department, National Association of Medical Examiners, Portland OR September 2014.

Y Wang, Accident or Homicide? Your Impression Might not be Correct, International Association of Forensic Sciences, Seoul, Korea, October 2014.

C Dalchele, Poster Presentation, "A Four-Year Retrospective Study of Methamphetamine in Los Angeles County", SOFT Conference, Grand Rapids MI, October 2014.

J Gadway, S Pearring, Full-day workshop in "Advanced Applications of Excel", SOFT Conference, Grand Rapids MI, October 2014.

FORENSIC MEDICINE BUREAU

Chief, Christopher Rogers, M.D.

The Forensic Medicine Bureau's full-time permanent staff consists of board-certified forensic pathologists who are responsible for the professional medical investigation and determination of the cause and mode of each death handled by the Department. Our physicians are experts in the evaluation of sudden unexpected natural deaths and unnatural deaths such as deaths from firearms, sharp and blunt force trauma, etc. Physicians are frequently called to court to testify on cause of death, and their medical findings and interpretations, particularly in homicide cases. In addition, the division has consultants in forensic neuropathology, odontology, anthropology, anesthesiology, pediatrics, surgery, ophthalmologic pathology, pulmonary pathology, cardiac pathology, emergency medicine, psychiatry, psychology and radiology to assist the deputy medical examiners in evaluating their cases.

MEDICAL EDUCATION

The Department is approved by the Institute for Medical Quality, a subsidiary of the California Medical Association as a provider of Continuing Medical Education activities.

HEALTH & SAFETY/RISK MANAGEMENT

The Department has implemented an aggressive health & safety committee and risk management program, which has significantly reduced work-related injuries.

ICAN

The Department participates in the interagency Council for Child Abuse and Neglect. This Department is the host of the monthly Child Death Review Committee of ICAN.

IDENTIFICATION OF UNIDENTIFIED BODIES (SB 90)

The Department participates in a State-mandated program to examine dental records and collect appropriate specimens for the identification of John and Jane Does.

MEDICAL EXAMINER-CORONER ALERT PROJECT

The Department of Coroner reports to the Consumer Product Safety Commission all deaths directly from unsafe consumer products.

RESIDENCY PROGRAM

The Medical Division of the Department of Medical Examiner-Coroner has an Accreditation Council for Graduate Medical Education–approved forensic pathology residency program

designed to train deputy medical examiners and prepare them for board certification while performing medical investigations under appropriate supervision.

SCUBA PROGRAM

The Department staff participates in the Los Angeles County Interagency Scuba Committee to investigate and develop programs to prevent future scuba diving fatalities.

TISSUE HARVESTING/ORGAN TRANSPLANTATION

This program provides corneas and other tissue to all in need in our community through coordinated efforts with various tissue banks and hospitals. After family consent is obtained, our medical staff provides review of organ and tissue Procurement in Coroner's cases. In addition, the program makes tissue available to low-income and indigent patients at County hospital at no cost to the patients or hospitals.

UNIVERSITY HOSPITAL PATHOLOGY RESIDENT TRAINING PROGRAM

We offer the opportunity for pathology residents from local university-affiliated hospital (USC, UCLA, and others) to train in our office with costs paid by the hospitals. This program fosters positive relationships with the university hospitals' pathology department and improves the standard of practice of forensic medicine in general, as these pathology residents will be practicing in the community when they finish training.



Medical Division Staff

FORENSIC SCIENCES LABORATORIES DIVISION

Chief, Ruby Javed-Ghaffar, Ph.D.

The Forensic Sciences Laboratories Division is responsible for the identification, collection, preservation, and analysis of physical and medical evidence associated with Coroner's cases. Our mission is to conduct a comprehensive scientific investigation in to the cause and manner of any death within the Coroner's jurisdiction. This is accomplished through the chemical and instrumental analysis of physical and medical evidence.

Our goal is to provide our medical examiners, families of decedents, outside investigating agencies, and the judicial system with timely, accurate, and advanced forensic analyses; and to provide expert interpretation of these analyses. The Forensic Sciences Laboratories are fully accredited in Controlled Substances, Trace Evidence, Toxicology and Firearm/Toolmarks by the prestigious American Society of Crime Laboratory Directors-Laboratory Accreditation Board (ASCLD/LAB-*International*). Our forensic blood alcohol testing program is licensed by the State of California (Title 17).

CRIMINALISTICS

Our teams of specially-trained forensic scientists are on call twenty-four hours a day to respond to crime scenes for the proper documentation, collection and preservation of physical evidence.

HISTOLOGY

This laboratory facilitates the preparation of gross tissue specimens for microscopic examination by the medical staff. This includes hematoxylin and eosin stains, special stains, and immunohistochemical stains. Through the microscopic examination of tissue, our forensic pathologists can determine the age and degree of injury, diagnose disease including cancers, evaluate cellular variation in tissue, and identify the presence of bacteria, medical disorders, and toxins such as asbestos.

TOXICOLOGY

Using advanced instrumentation and methods, the toxicology laboratory conducts chemical and instrumental analysis on post-mortem specimens to determine the extent to which drugs may have contributed to a death. The laboratory's experienced forensic toxicologists offer expert drug interpretation that assists the medical examiners in answering questions like what drug was taken? How much and when was the drug taken? Did the drug contribute to the

cause and/or manner of death? Was the drug use consistent with therapeutic administration, or was it abuse? If the death is due to a drug overdose, was it intentional or accidental?

SCANNING ELECTRON MICROSCOPY LAB

Our scanning electron microscope (SEM) laboratory conducts gunshot residue (GSR) analyses and toolmark evaluations. Using a SEM equipped with an energy dispersive x-ray detector, GSR analysis is used to determine whether an individual may have fired a weapon. Our laboratory also performs GSR analyses for many law enforcement agencies throughout California.

Toolmark analysis involves the evaluation of trauma to biological material, especially bone and cartilage, as to the type of instrument that might have produced the trauma. This not only helps our pathologists understand the circumstances of a death, but also aids the law enforcement agency in their criminal investigation.

EVIDENCE CONTROL

Our evidence personnel are responsible for maintaining the integrity and chain of custody for all of the evidence collected from Coroner's cases. All of the physical evidence collected by Department investigators, criminalists, pathologists, forensic technicians, and forensic attendants is documented and maintained by the evidence control unit.



Forensic Sciences Laboratory

OPERATIONS BUREAU

Chief, Brian Elias, F-ABMDI

This Bureau is responsible for the 24-hour-a-day, 7-day-a-week operations of many direct services provided by the Department. The Bureau oversees Investigations and Decedent Services Division. In addition, the Bureau is responsible for public information office functions, fleet management, emergency and disaster planning, homeland security grants, and other ancillary programs such as regional offices and the Youthful Drunk Driver Visitation Program (YDDVP).

INVESTIGATIONS

The Investigations Division responds to the scenes of death throughout Los Angeles County twenty-four hours a day, seven days a week. It is the responsibility of the Coroner's Investigator to function as the eyes and ears of the Deputy Medical Examiner, ensure that State law is followed in respect to Coroner's cases, and be the advocate for the deceased person. Coroner's Investigators are responsible for preparation of investigative reports for use in the determination of cause and mode of death along with identifying the deceased and notifying their next of kin. Testimony in court and depositions on Coroner's cases is also an important part of the investigator's duties. Due to the diverse case load in Los Angeles County, the Coroner's Investigator is in the important position of seeing every death that occurs under other than natural circumstances, and is often the first to identify trends such as serial deaths and consumer product safety issues.

The Department of Coroner is a California Peace Officer Standards and Training (POST) certified agency. Under State law (Penal Code 830.35), all Coroner's Investigators are sworn peace officers. The Coroner's Investigators must meet the same stringent hiring standards as any other California law enforcement agency. The Bureau offers specialized POST certified training including the 40 hour annual Skeletal Recovery course which is attended by law enforcement, coroner investigators, criminalists, military and others from around the country.

Investigative capabilities have been extended to offices in the Antelope Valley and San Fernando. Regional offices provide a more rapid Coroner's response to the scene of death, which results in rapid mitigation of traffic and other public conveyance obstructions.

SPECIAL OPERATIONS, DISASTER PREPAREDNESS AND RESPONSE

The Department of Coroner has fielded a specialized response unit comprised of Coroner's staff including investigators, criminalists, technicians, doctors and consultants in anthropology and entomology.

The SORT team responds to cases requiring specialized recovery and scene processing techniques such as those required in aircraft crashes, buried bodies, scattered human remains and fires, and also assists law enforcement agencies in general searches for scattered human remains or possible burial sites. They are the primary responders for mutual aid requests and multiple fatality incidents.

Disaster preparedness and response is a key Departmental responsibility as one of the lead County agencies in major disasters and significant smaller incidents that involve multiple fatalities. The Department also serves as the Region 1 Coroner Mutual Aid Coordinator for the State of California. Our role requires plan development and regular training on the operation of an Emergency Operations Center (EOC) and field response as well as participating in multi-agency emergency exercises. As a result of grant funding the Department has been able to purchase disaster equipment to include multiple decedent storage and transportation vehicles, a command post and mobile autopsy vehicle. We continue to strive to update and keep current with our training and equipment needs.



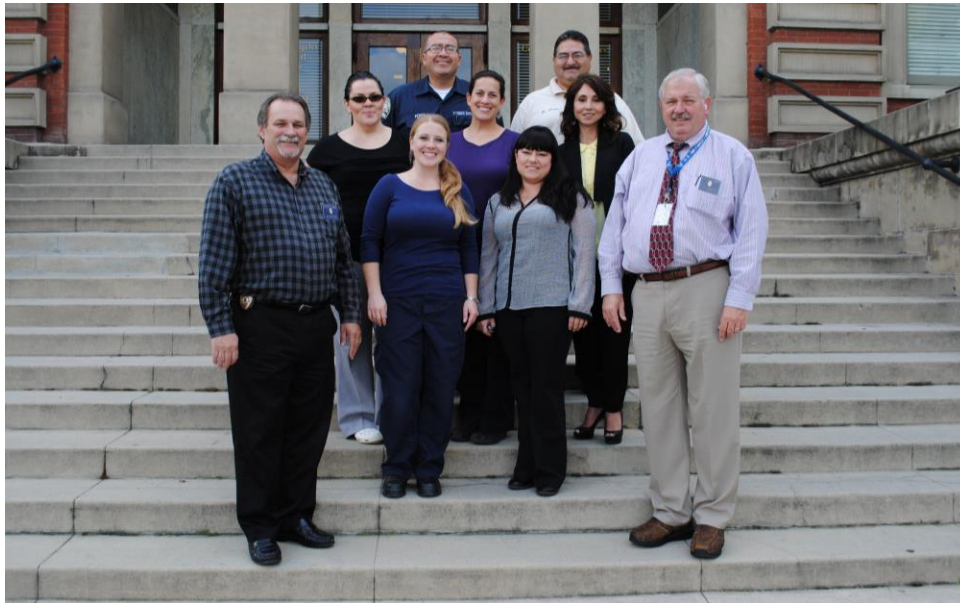
Special Operations Response Team (SORT)

YOUTHFUL DRUNK DRIVER VISITATION PROGRAM (YDDVP)

The Department of Coroner has presented the YDDVP program since 1989 as an alternative sentencing option that can be considered by a judicial officer. The program is designed to present to the participants the consequences of certain behavior in a manner that has an impact and is also educational. The program is currently offered weekly and includes classes presented completely in Spanish.

DECEDENT SERVICES DIVISION

Personnel assigned to this unit are responsible for the transportation, processing, storage, and release of bodies that are under the jurisdiction of the Coroner. Bodies may be recovered from any death scene, in almost any environment imaginable, including those in public view, private homes, and hospitals. Decedent processing includes obtaining the height and weight of bodies, the collection, documentation, and safekeeping of personal effects, and to the collection of both physical and medical evidence, fingerprinting of decedents using LIVE-SCAN technology and placement of identification tags on the body. Bodies are maintained in refrigerated crypts while awaiting examination and release to mortuaries or for County cremation. Additionally, staff members are accountable for all human remains and specimens stored in the crypt areas.



Youthful Drunk Driver Visitation Program Staff

ADMINISTRATIVE SERVICES BUREAU

Chief, Wendy Myring

The Administrative Services Bureau is responsible for all departmental financial operations, departmental budget preparation, fiscal reports, personnel, payroll, procurement, accounting, revenue collection, marketing, volunteer services, contracts and grants, public records request processing, information technology, workfare programs, facilities management, and other related functions.

FISCAL SERVICES

The Accounting section is responsible for all financial transactions performed by the Department of Coroner. All Auditor-Controller guidelines are followed as well as any departmental guidelines governing monetary issues. The section also monitors all departmental accounts, such as salary and benefits, overtime expenditures, services and supplies, and budget.

PROCUREMENT

Procurement is responsible for processing all requests for goods and services for the Department, warehouse and facilities management. Procurement staff works closely with fiscal staff to provide real-time information on services and supplies expenditures, fixed assets and inventory control, playing an important budgetary support role. They also provide guidance to end-users in the development of specifications and scopes of work.

HUMAN RESOURCES

Human Resources is responsible for personnel issues that are inherent in County government such as benefits, processing examinations, filling vacant positions, litigation, workers compensation, volunteer services, payroll, community support programs such as job fairs, and budgetary support.

MARKETING

“Skeletons in the Closet” has been operating since September 1993. “Skeletons in the Closet” features a complete line of quality souvenir items, such as beach towels, shirts, toe tags, and much more. The items are available to the public via website at LACORONER.COM or by calling (323) 343-0760.

CONTRACTS AND GRANTS

The Department administers contracts and agreements for various functions, such as tissue recovery, regional offices lease agreements, cremation services, neuropathology and forensic pathologist physician services. Contracts/Grants staff monitor existing contracts and grants, ensuring all provisions are adhered to. Staff also studies Department operations in the continuing evaluation of the appropriateness of contracting for other functions.

FORENSIC DATA INFORMATION SYSTEMS

The mission of Forensic Data Information systems is to enhance and support the Department's long-range goals, mission-critical business goals, and objectives through the administration, project management, and expansion of information technology-related applications and services, including, where appropriate, the delivery of services to agencies referred through appropriate 24/7 e-government technologies.

The FDIS is also responsible for network, database and application administration, preparation of statistics and general client support. The FDIS is responsible to ensure that the Department is in alignment with the County-wide strategic planning effort to conduct County business electronically and maintain compliance with the technological directives as stipulated by the County's Chief Information Officer. The FDIS manages the information technology efforts of subcontracts in the implementation and support of new technologies such as e-commerce content management and voice over internet protocol (VoIP).

PUBLIC SERVICES DIVISION

Acting Chief, Vanessa Gastelum

This Division is responsible for Coroner case file management, revenue collection (document sales, decedent billing, etc.), and interaction with the public both telephonically and at the front lobby reception area. In addition to providing information and copies of autopsy reports, Public Services staff offers many services to the public. These services include preparation of "Proof of Death" letters to verify that a death is being investigated by the Coroner, and "Port of Entry" letters to confirm that a decedent had no communicable disease, necessary for the decedent's admission into a foreign country after death.

RECORDS SECTION

The Coroner is mandated by the California Government Code to retain all files permanently; therefore the Department maintains 100+ years of records that are accessed on a regular basis at the request of the public, law enforcement and other government agencies. This Section is responsible for maintaining and securing Coroner records. In addition, this section handles a large volume of calls and is tasked with handling requests for records, reports and proof of death letters. Older records are maintained off site, on microfilm or microfiche, and must be transferred on to paper in order to be released. Some of our older records date back to the 19th century and are handwritten in ledgers.

DEATH CERTIFICATION

The Section is responsible for the completion and daily issuance of the death certificates to mortuaries.

MEDICAL/CLERICAL SECTION

This Section is responsible for reporting SIDS (Sudden Infant Death Syndrome) cases to the State and local health agencies for follow-up by those agencies. The section also provides clerical support to the Deputy Medical Examiners.

MEDICAL TRANSCRIBING

The Transcriber is responsible for the transcription of the autopsy report protocols, microscopic slide reports, neuropathology reports, suicide recordings, case review

reports, supplemental reports, etc. An outside contractor is utilized for routine transcriptions.

PERSONAL PROPERTY SECTION

Personal property of all decedents is kept in the Personal Property Section and maintained in a vault until release to the decedent's next of kin. The Department has three Personal Property Custodians who collect, inventory, safeguard and release decedent's personal property to the legal next of kin. The Custodians are also responsible for disposal of all unclaimed personal effects.

SUBPOENA DESK

The desk is responsible for processing all criminal and civil subpoenas, distribution (DocuPeak) of all subpoenas issued to staff on Coroner related business, processes subpoenas requesting documents, collection of witness fees. The desk is also responsible for the scheduling of all Deputy medical Examiners for court appearances, depositions and appointments with law enforcement, Deputy District Attorneys, Public Defender staff, and members of the public.

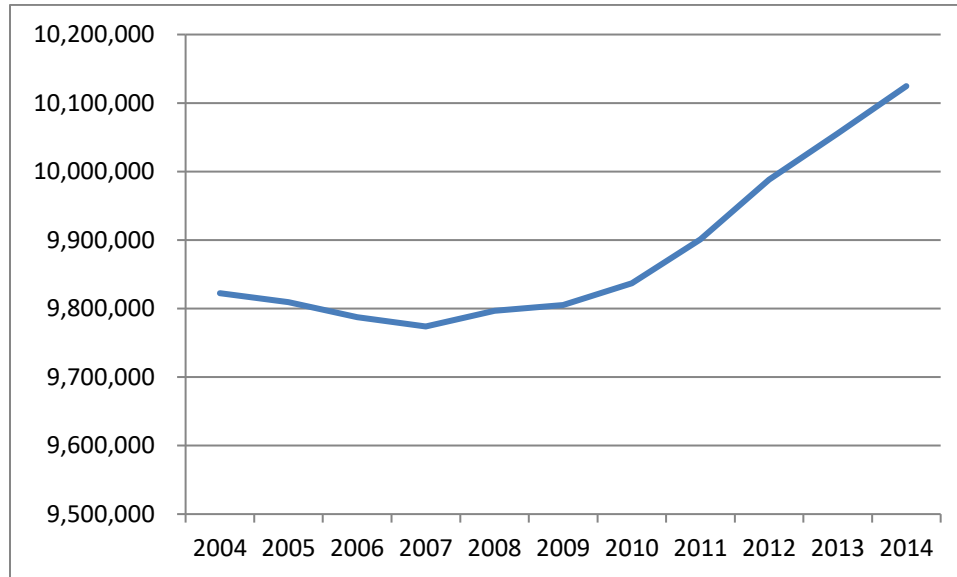
BILLING SECTION

This section is responsible for billing and collecting transportation and handling (T&H) fees from the legal Next of Kin (NOK). California Government Code (Sections 27472 and 54985) and Los Angeles County Code (2.22.100) authorizes the Coroner to charge and collect from the person entitled to control the disposition of the remains the actual expense incurred by the coroner in removing the body from the place of death and keeping the body until its release to the person responsible for its interment. These same codes allow the Coroner to waive the fees if the person entitled to control the disposition of the remains claims and proves to be indigent. Full or make partial payments can be made via mail, on line or in person.

GIFT SHOP

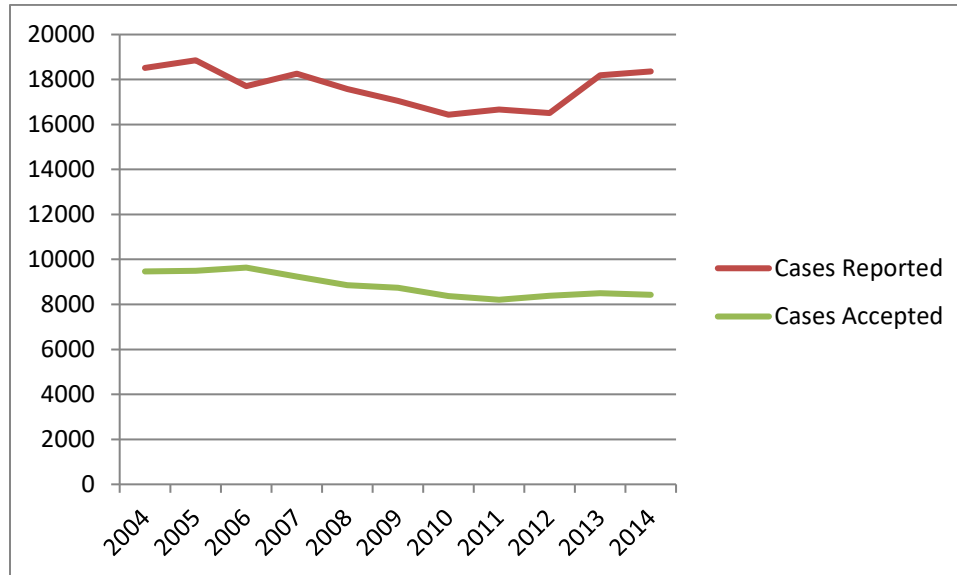
"Skeletons in the Closet" has been operating since September 1993. The purpose of the store is to promote how fragile life is and create awareness and responsibility toward one's actions. Souvenir items, such as beach towels, t-shirts, baseball caps, key chains and more are offered for sale in the store and on-line.

Population of Los Angeles County, 2004-2014



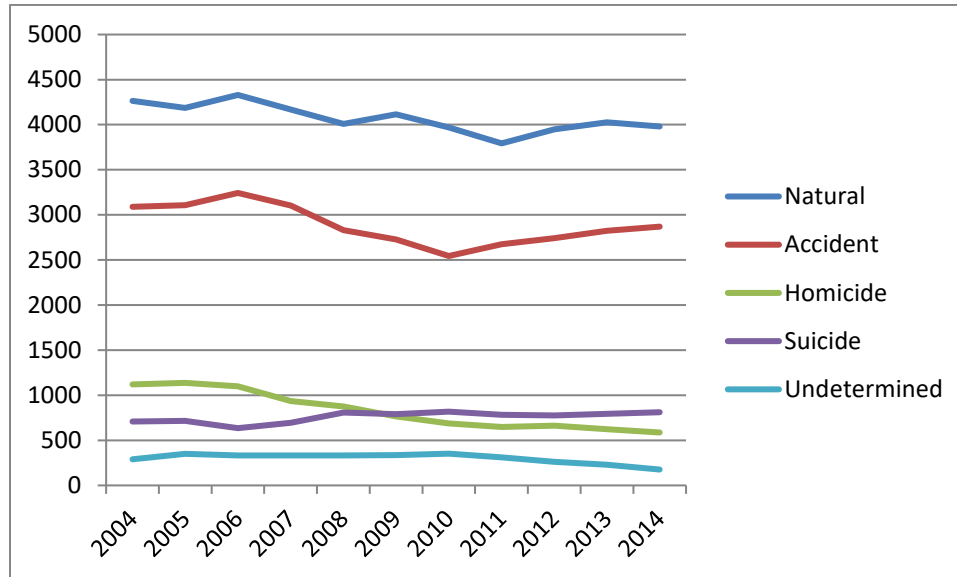
Year	Population
2004	9,822,508
2005	9,809,557
2006	9,787,327
2007	9,773,894
2008	9,796,812
2009	9,805,233
2010	9,837,011
2011	9,900,858
2012	9,988,287
2013	10,055,477
2014	10,124,684

Number of Reported and Accepted Cases per Year, 2004-2014



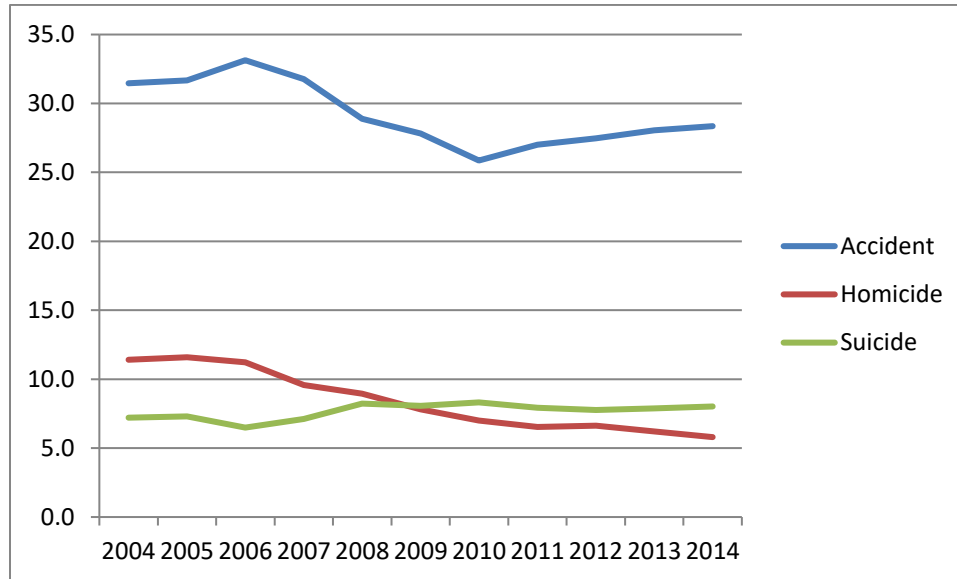
Year	Cases Reported	Cases Accepted
2004	18509	9465
2005	18854	9494
2006	17704	9637
2007	18254	9237
2008	17572	8854
2009	17053	8734
2010	16434	8371
2011	16668	8207
2012	16508	8390
2013	18187	8495
2014	18365	8428

Final Manner of Coroner's Cases, 2004-2014



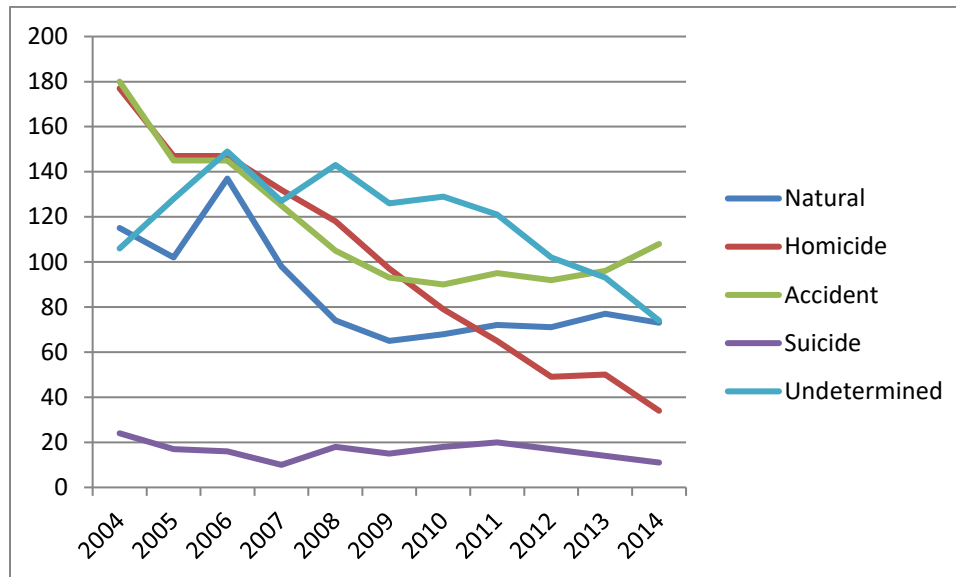
Year	Natural	Accident	Homicide	Suicide	Undetermined
2004	4265	3090	1121	709	289
2005	4186	3106	1137	716	349
2006	4330	3243	1098	635	331
2007	4170	3104	936	696	331
2008	4007	2830	876	807	334
2009	4115	2728	765	791	335
2010	3968	2544	689	818	352
2011	3793	2673	647	784	310
2012	3947	2743	662	776	262
2013	4027	2823	624	793	228
2014	3981	2871	587	813	176

Death Rates per 100,000 Population, 2004-2014



Year	Accident	Homicide	Suicide
2004	31.5	11.4	7.2
2005	31.7	11.6	7.3
2006	33.1	11.2	6.5
2007	31.8	9.6	7.1
2008	28.9	8.9	8.2
2009	27.8	7.8	8.1
2010	25.9	7.0	8.3
2011	27.0	6.5	7.9
2012	27.5	6.6	7.8
2013	28.1	6.2	7.9
2014	28.4	5.8	8.0

Manner for Child Deaths (Ages under 18), 2004-2014

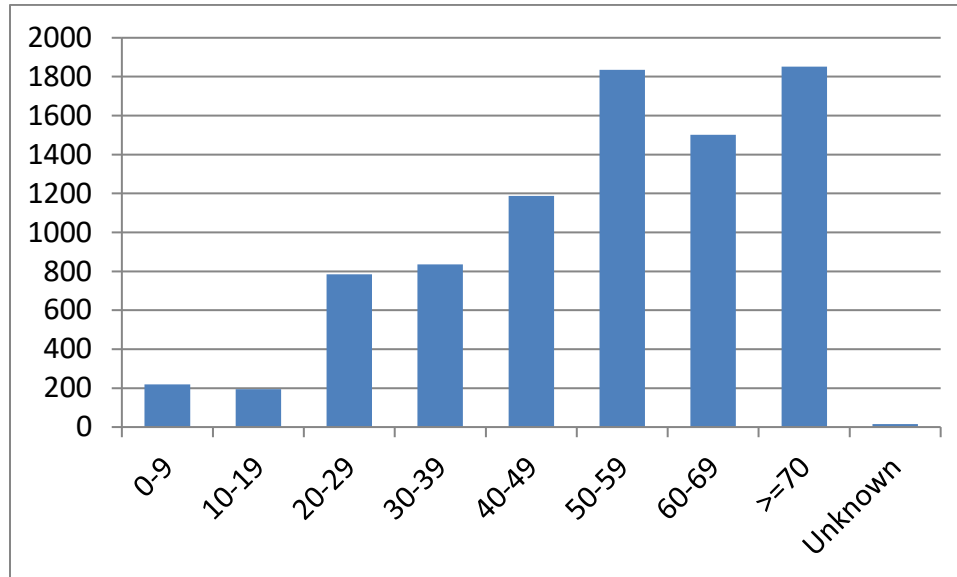


Year	Natural	Homicide	Accident	Suicide	Undetermined
2004	115	177	180	24	106
2005	102	147	145	17	128
2006	137	147	145	16	149
2007	98	132	125	10	127
2008	74	118	105	18	143
2009	65	97	93	15	126
2010	68	79	90	18	129
2011	72	65	95	20	121
2012	71	49	92	17	102
2013	77	50	96	14	93
2014	73	34	108	11	74

**Statistics Required by National Association of Medical
Examiners**

Number of deaths reported:	18,365
Number of cases accepted:	8428
Number of cases by manner of death:	
Accident:	2871
Homicide:	587
Natural:	3981
Suicide:	813
Undetermined:	176
Scene visits:	3621
Number of bodies transported:	6150
External examinations:	
By physician:	2486
By investigator:	2427
Partial autopsies:	234
Complete autopsies:	3538
Hospital autopsies under ME jurisdiction:	0
Cases where toxicology was performed:	5040
Bodies unidentified after examination:	17
Organ and tissue donations:	
Total organ donors:	134
Total tissue donors:	373
Unclaimed bodies:	500
Exhumations:	0

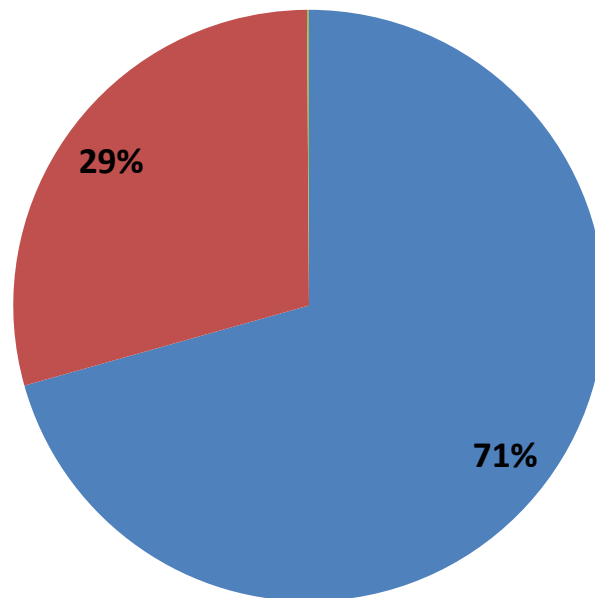
Number of Coroner's Cases by Age



Age	Number of Cases
0-9	219
10-19	195
20-29	785
30-39	836
40-49	1188
50-59	1836
60-69	1502
>=70	1852
Unknown	15

Coroner's Cases by Gender

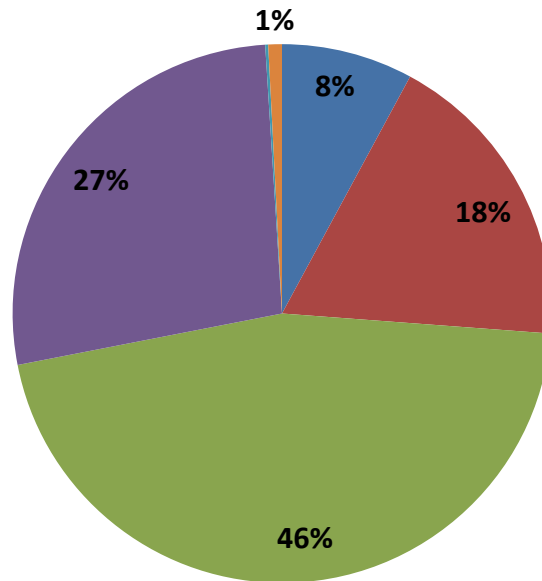
■ Male ■ Female ■ Unknown



Gender	Number of Cases
Male	5953
Female	2466
Unknown	9

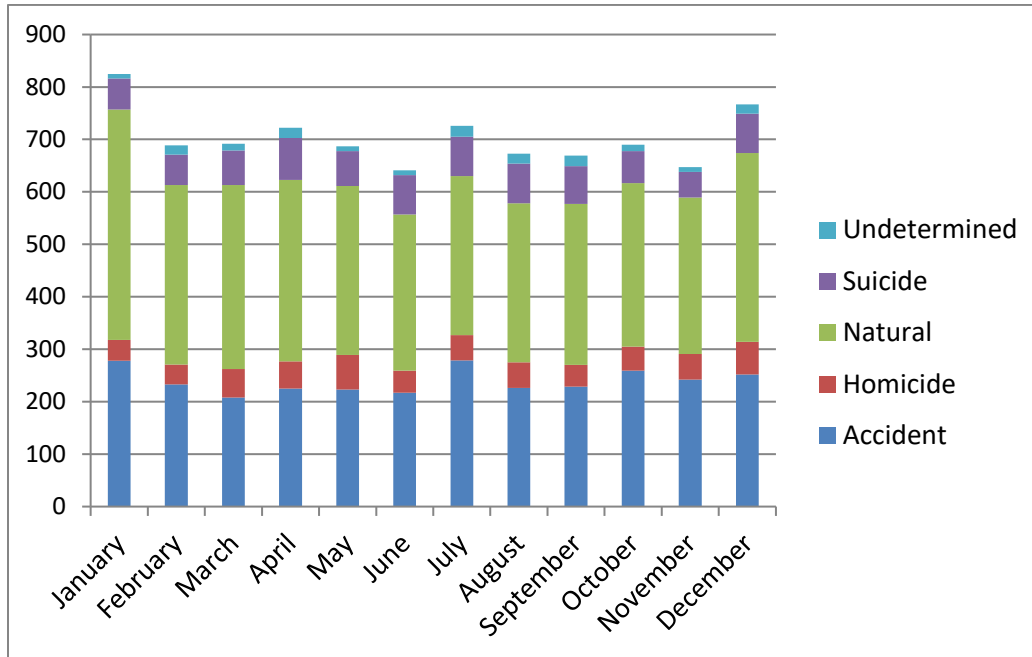
Coroner's Cases by Race

■ Asian ■ Black ■ Caucasian
■ Latino ■ Native American ■ Unknown



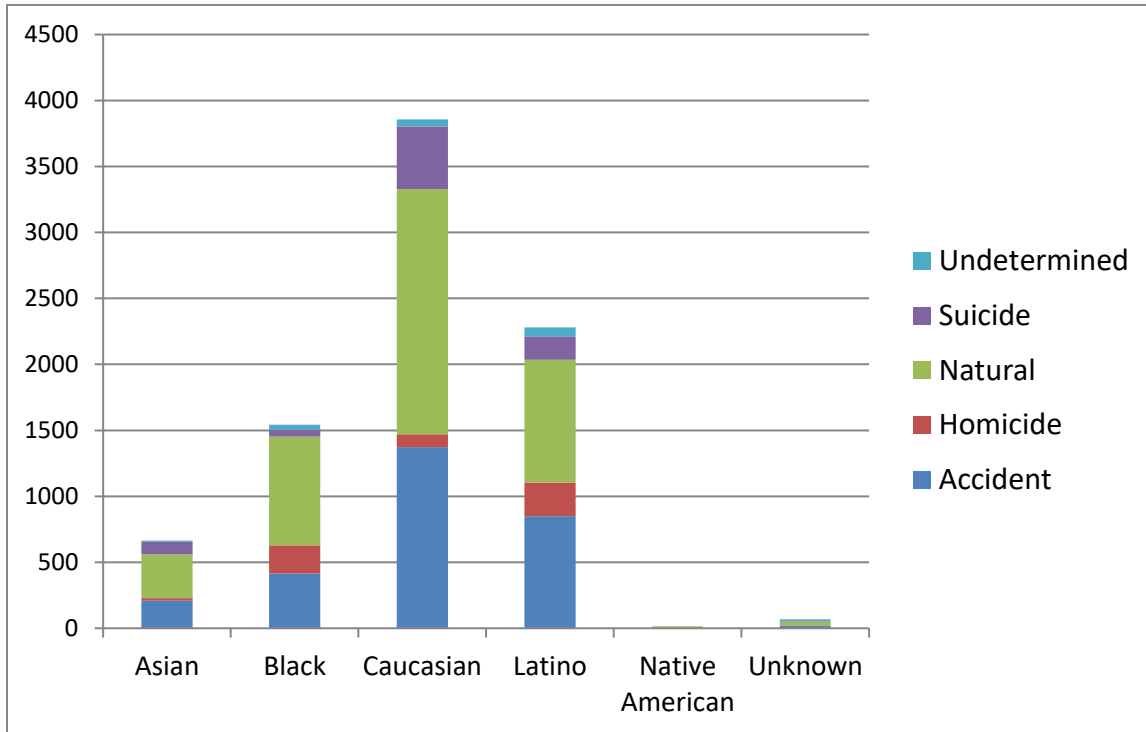
Race	Number of Cases
Asian	665
Black	1542
Caucasian	3856
Latino	2281
Native American	15
Unknown	69

Manner of Death by Month



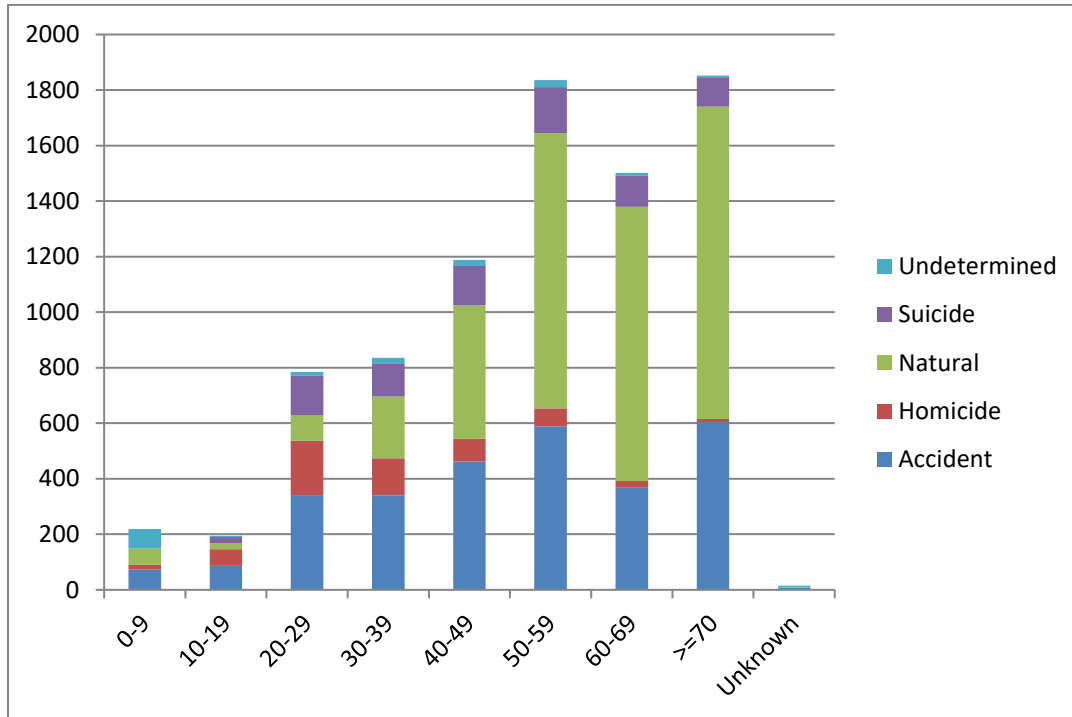
Month	Accident	Homicide	Natural	Suicide	Undetermined
January	278	40	439	59	9
February	233	38	342	58	18
March	208	54	351	66	13
April	225	52	346	80	19
May	223	66	322	67	9
June	217	42	298	75	9
July	279	48	303	75	21
August	226	49	303	76	19
September	229	41	307	72	20
October	259	46	312	61	12
November	242	49	298	49	9
December	252	62	360	75	18

Racial Distribution for Each Manner



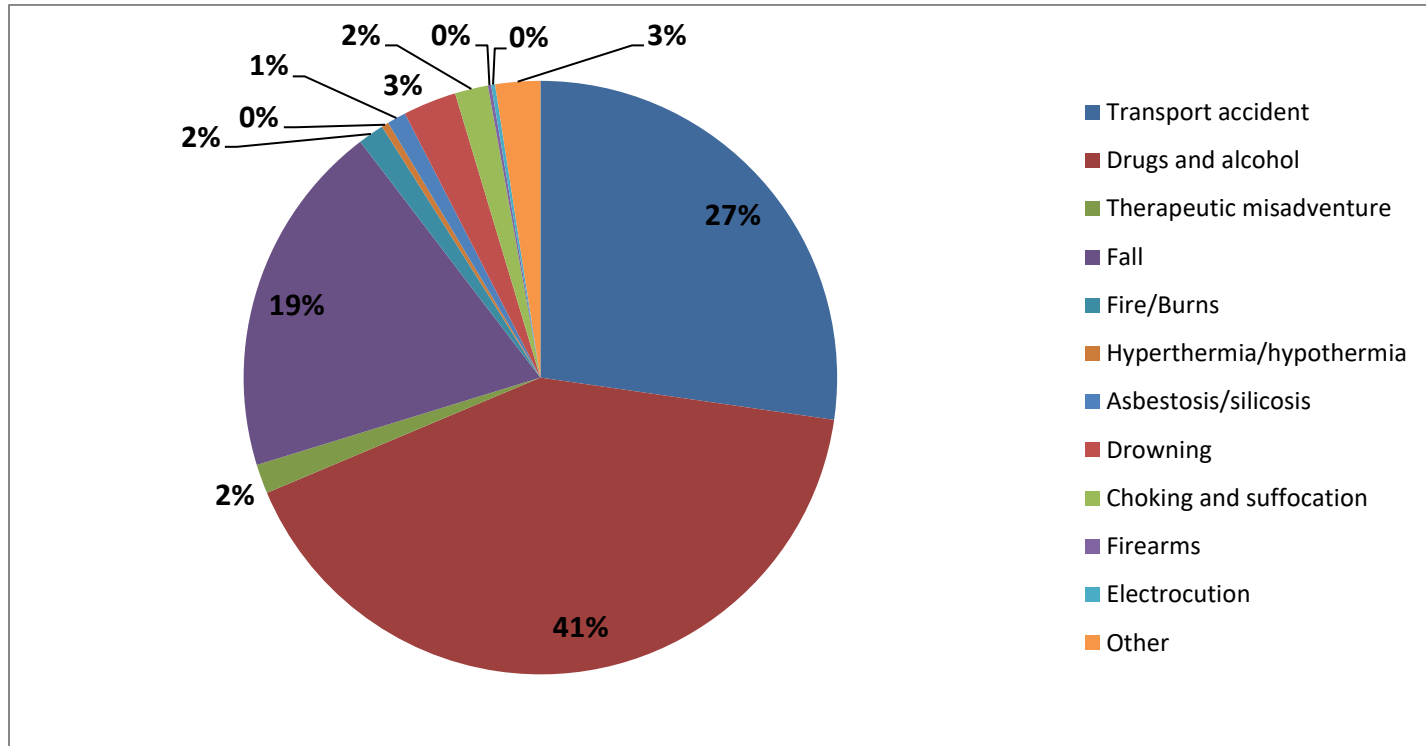
Race	Accident	Homicide	Natural	Suicide	Undetermined
Asian	210	18	332	97	8
Black	415	213	824	54	36
Caucasian	1372	98	1857	477	52
Latino	849	255	931	178	68
Native American	5	1	9	0	0
Unknown	20	2	28	7	12

Manner Distribution for Each Age (Years) Group



Manner	0-9	10-19	20-29	30-39	40-49	50-59	60-69	>=70	Unknown
Accident	74	86	341	340	462	589	368	604	7
Homicide	16	60	196	134	82	64	24	11	0
Natural	59	22	91	222	480	992	987	1125	3
Suicide	0	22	143	120	142	166	114	106	0
Undetermined	70	5	14	20	22	25	9	6	5

Accidental Deaths



Transport accident	770
Drugs and alcohol	1168
Therapeutic misadventure	45
Fall	549
Fire/Burns	40
Hyperthermia/hypothermia	11
Asbestosis/silicosis	29
Drowning	82
Choking and suffocation	51
Firearms	5
Electrocution	6
Other	69

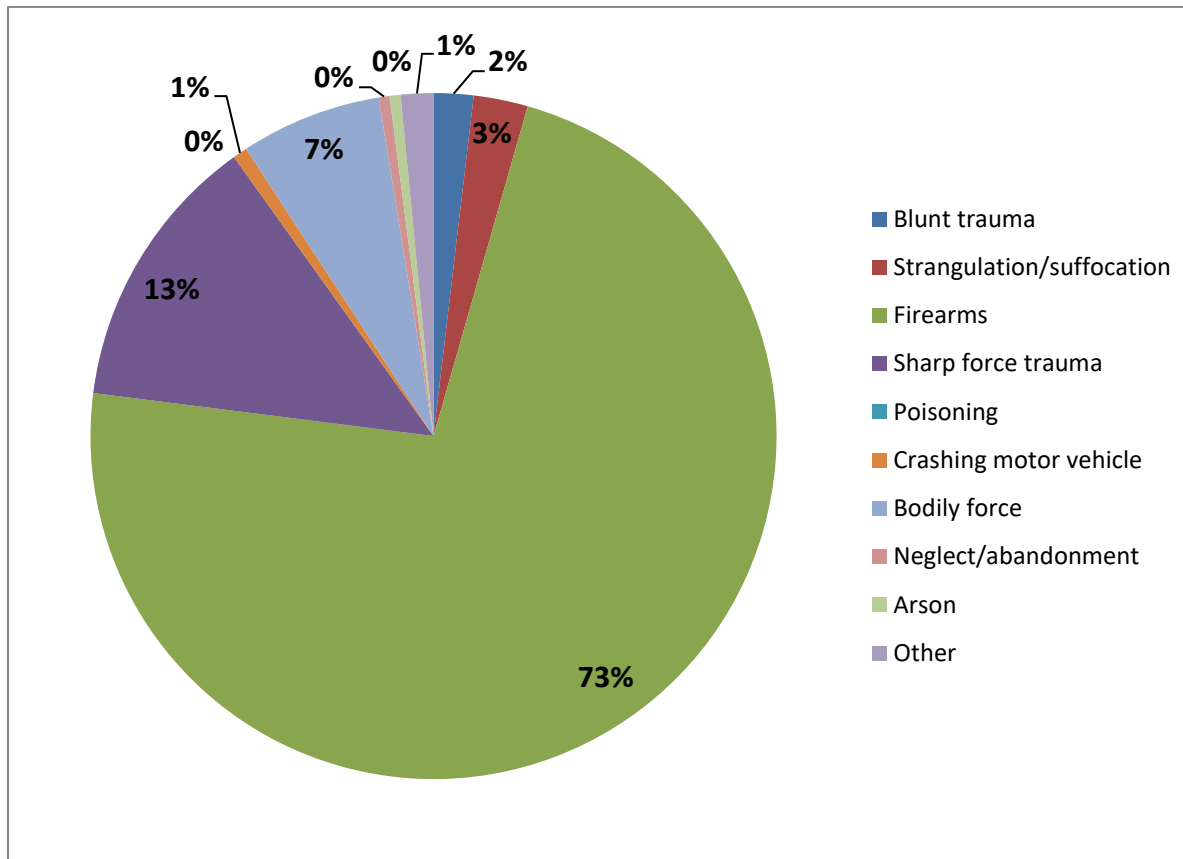
Transportation Accidents

Pedestrians	Collision with car, pick-up truck or van	252
	Collision with heavy transport vehicle or bus	7
	Collision with railway train or railway vehicle	17
	Other and unspecified transport accidents	10
	Total pedestrians	286
Pedal Cyclists	Collision with car, pick-up truck or van	27
	Collision with heavy transport vehicle or bus	2
	Fall from pedal cycle	8
	Collision with train	1
	Collision with fixed object	2
	Total pedal cyclists	40
Motorcycle Riders	Collision with pedestrian or motorcycle	1
	Collision with car, pick-up truck or van	77
	Collision with heavy transport vehicle or bus	7
	Collision with fixed or stationary objects	26
	Non-collision accident (fell or thrown)	13
	Other and unspecified transport accidents	11
	Total motorcycle riders	135
Car Occupants	Collision with car, pick-up truck or van	125
	Collision with heavy transport vehicle or bus	15
	Collision with railway train or railway vehicle	2
	Collision with fixed or stationary objects	99
	Non-collision accident (fell or thrown)	37
	Other and unspecified transport accidents	6
	Total car occupants	284
Other Transport Accidents	Occupant of pick-up truck or van	16
	Fall from horse	2
	Off-road vehicle	6
	Other and unspecified transport accidents	1
	Total other transport accidents	25
	Total transport accidents	770

Accidental Falls

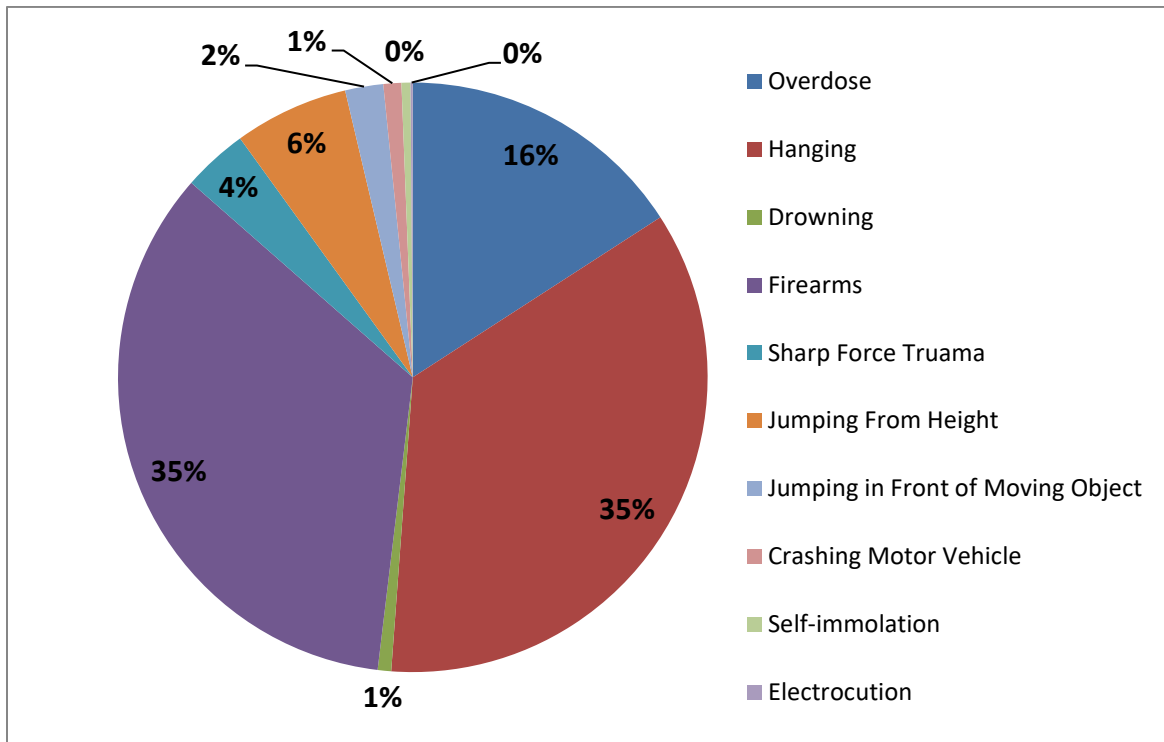
Fall on same level from slipping, tripping and stumbling	435
Fall while being carried or supported by other persons	1
Fall involving wheelchair	9
Fall involving bed	9
Fall involving chair	7
Fall on or from stairs and steps	30
Fall on or from ladder	13
Fall from scaffolding	1
Fall from, out of or through building or structure	22
Fall from tree	5
Fall from cliff	3
Diving into water causing injury other than drowning	3
Other fall from one level to another	6
Other fall on same level	2
Fall off toilet	1
Fall off sofa	1
Other and unspecified falls	1
Total accidental falls	549

Homicidal Deaths



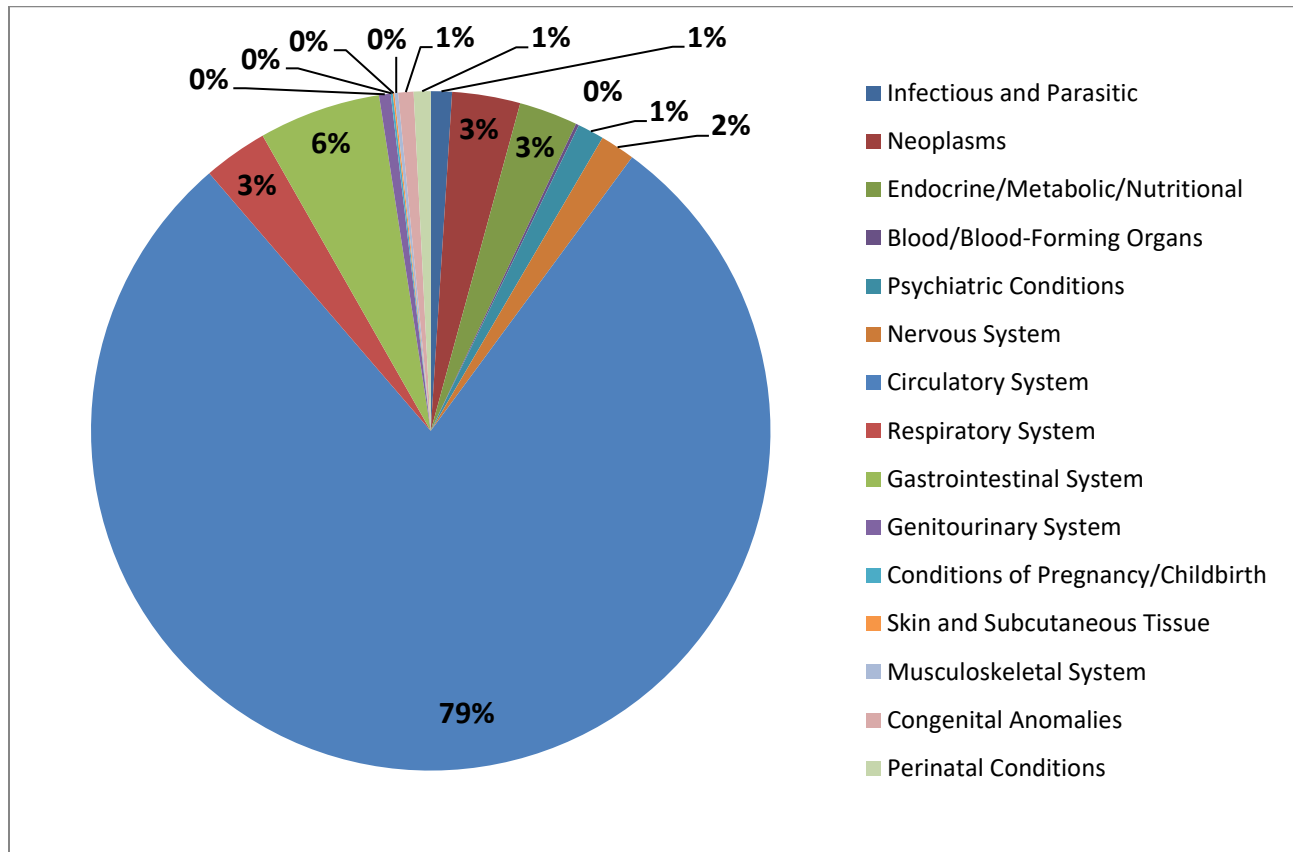
Blunt trauma	11
Strangulation/suffocation	15
Firearms	426
Sharp force trauma	77
Poisoning	0
Crashing motor vehicle	4
Bodily force	39
Neglect/abandonment	3
Arson	3
Other	9
Total homicides	587

Suicidal Deaths



Overdose	129
Hanging	287
Drowning	6
Firearms	281
Sharp Force Trauma	29
Jumping From Height	51
Jumping in Front of Moving Object	17
Crashing Motor Vehicle	8
Self-immolation	4
Electrocutation	1
Total suicides	813

Natural Deaths



Infectious and Parasitic	40
Neoplasms	129
Endocrine/Metabolic/Nutritional	111
Blood/Blood-Forming Organs	6
Psychiatric Conditions	50
Nervous System	66
Circulatory System	3129
Respiratory System	122
Gastrointestinal System	231
Genitourinary System	22
Conditions of Pregnancy/Childbirth	4
Skin and Subcutaneous Tissue	3
Musculoskeletal System	7
Congenital Anomalies	29
Perinatal Conditions	32
Total	3981

Circulatory System Disease Among Natural Deaths

Aneurysms	Cerebral	21
	Aortic	32
Arteriosclerotic disease		2400
Cardiomyopathy	Alcoholic	6
	Dilated	38
	Hypertrophic	77
	Idiopathic	44
	Right ventricular dysplasia	8
Cerebral hemorrhage/infarction		71
Endocarditis		2
Hypertensive disease		331
Myocarditis		8
Pulmonary hypertension		1
Thrombosis/embolism		34
Valvular disease	Aortic valve disease	3
	Mitral valve disease	4
	Unspecified	3
Ruptured esophageal varices		2
Arrhythmia		1
Other		43
Total		3129

Nervous System Disease Among Natural Deaths

Alzheimer Disease	2
Cerebral palsy	8
Epilepsy	43
Huntington Disease	2
Meningitis/encephalitis	1
Parkinson's Disease	1
Spinal abscess	1
Multiple sclerosis	4
Intracranial abscess	1
Amyotrophic lateral sclerosis	1
Idiopathic normal pressure hydrocephalus	1
Guillain-Barre syndrome	1
Total	66

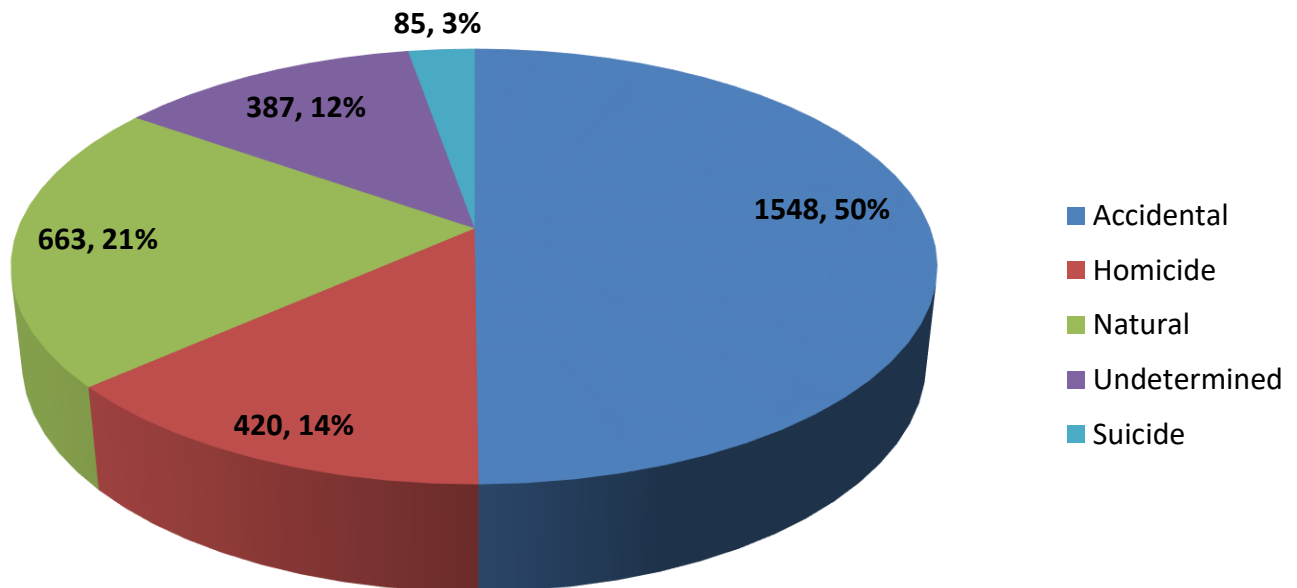
Infectious Diseases Among Natural Deaths

Bacterial infections	<i>Clostridium difficile</i>	3
	<i>Aeromonas hydrophila</i>	1
	<i>Neisseria meningitidis</i>	1
	<i>Streptococcus</i>	2
	<i>Staphylococcus</i>	1
	Legionnaires disease	1
	<i>Enterococcus</i>	1
	Unspecified bacteria	2
Viral infections	Hepatitis B	1
	Hepatitis C	11
	Human immunodeficiency virus	13
	Chikungunya virus	1
Fungal infections	<i>Cryptococcus</i>	1
	<i>Mucor</i>	1
	Total	40

Neoplasms Among Natural Deaths

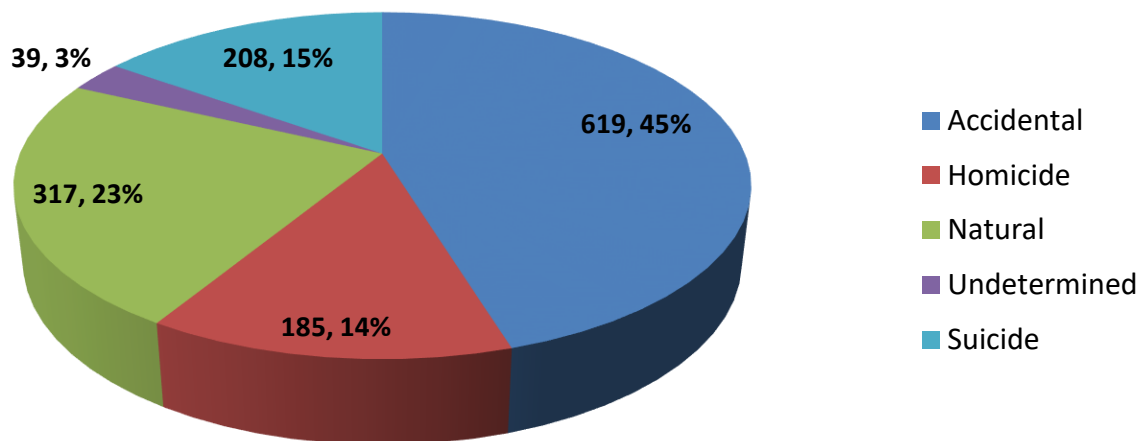
Head and neck	4
Esophagus	1
Stomach	2
Colon	5
Rectum	1
Liver	10
Gallbladder	1
Pancreas	5
Gastrointestinal tract	2
Cardiac	3
Lung	24
Mesothelioma	12
Breast	11
Cervix	1
Uterus	5
Prostate	2
Testis	1
Kidney	4
Brain	7
Unknown primary site	9
Bone	2
Sarcoma	2
Melanoma	2
Lymphoma	8
Leukemia	1
Multiple myeloma	1
Meningioma	1
Cerebral colloid cyst	1
Ependymoma	1
Total	129

2014 All Cases with Drugs Detected by Manner
Total: 3103 Cases



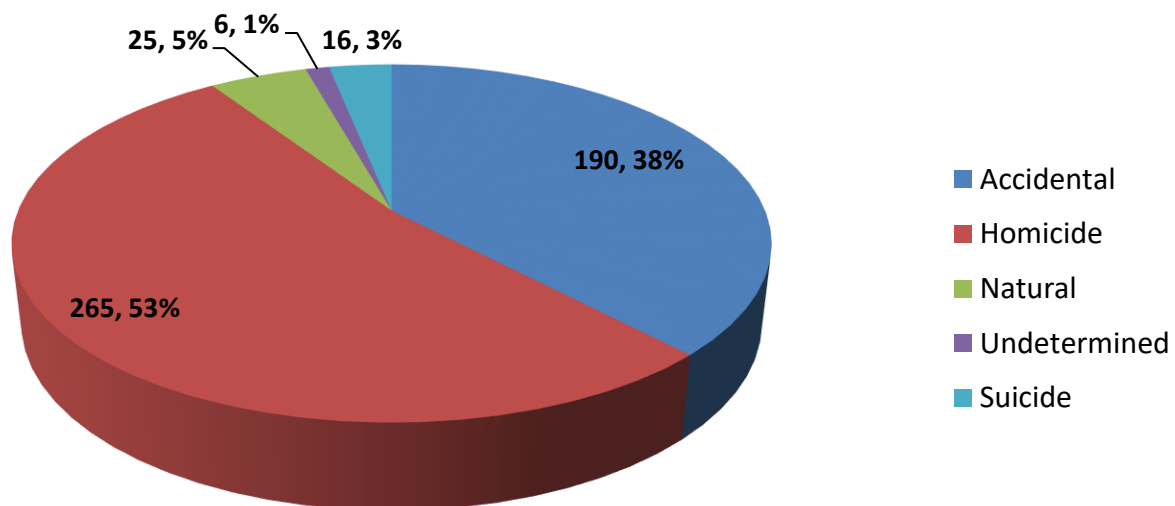
2014 Alcohol Detected by Manner

Total: 1368

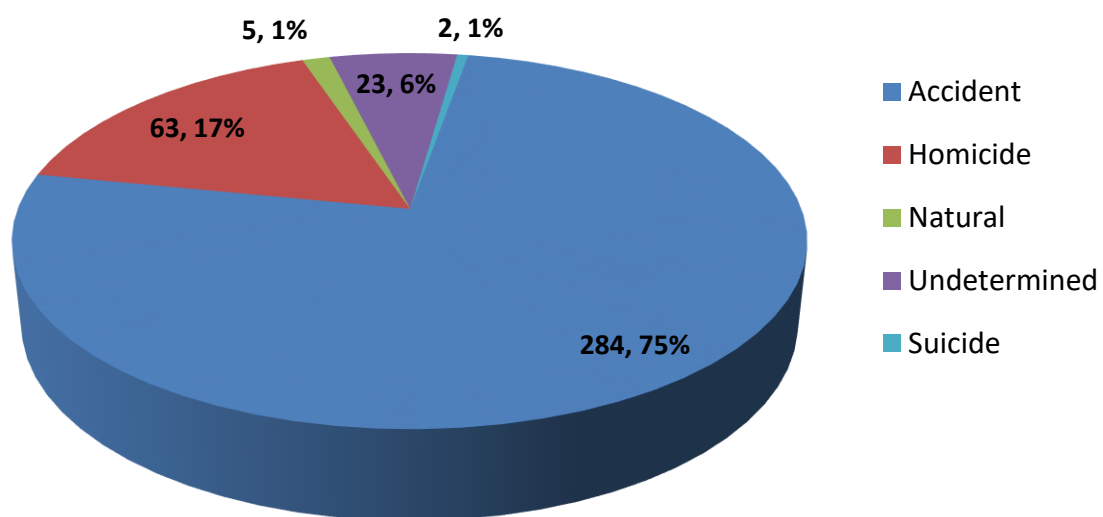


Marijuana Detected by Manner

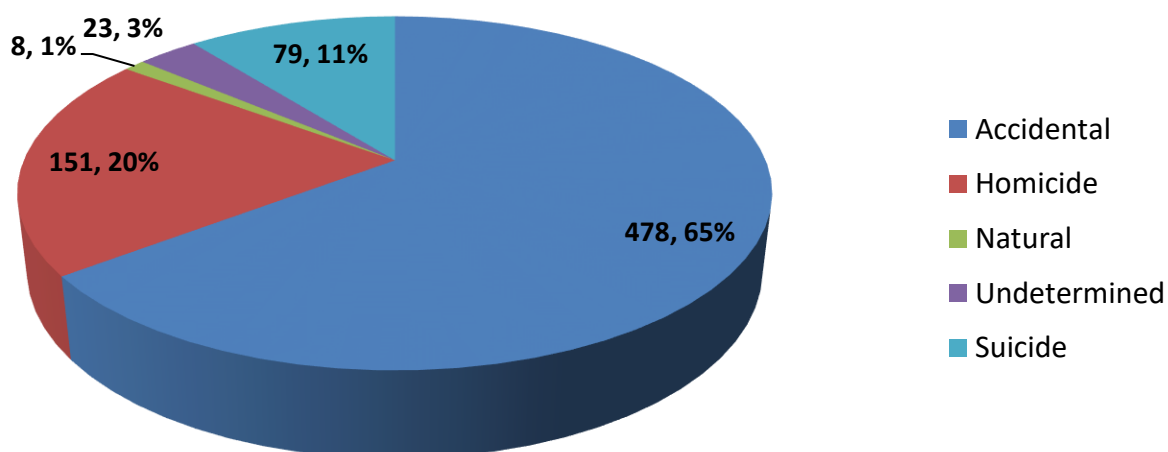
Total: 502 Cases



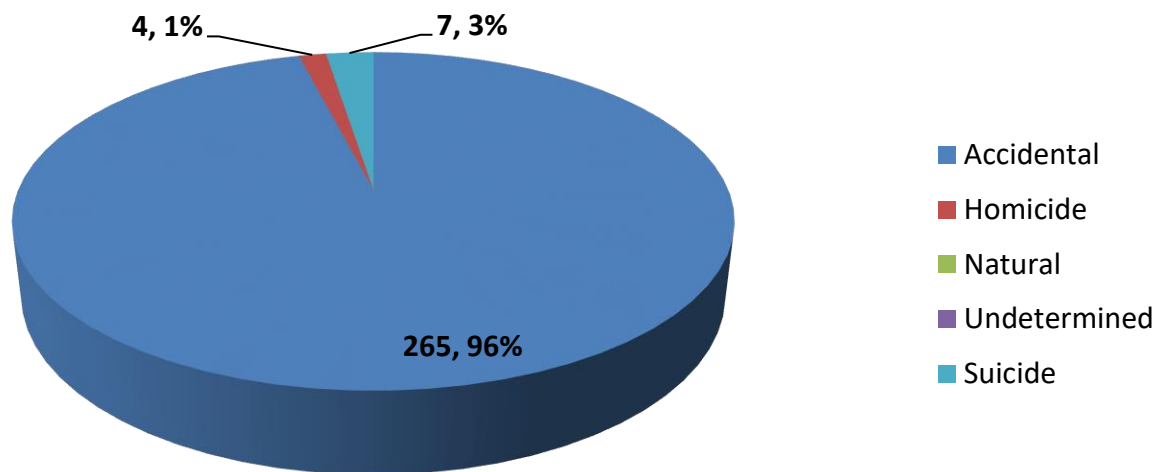
Cocaine Detected by Manner
Total Cases: 377



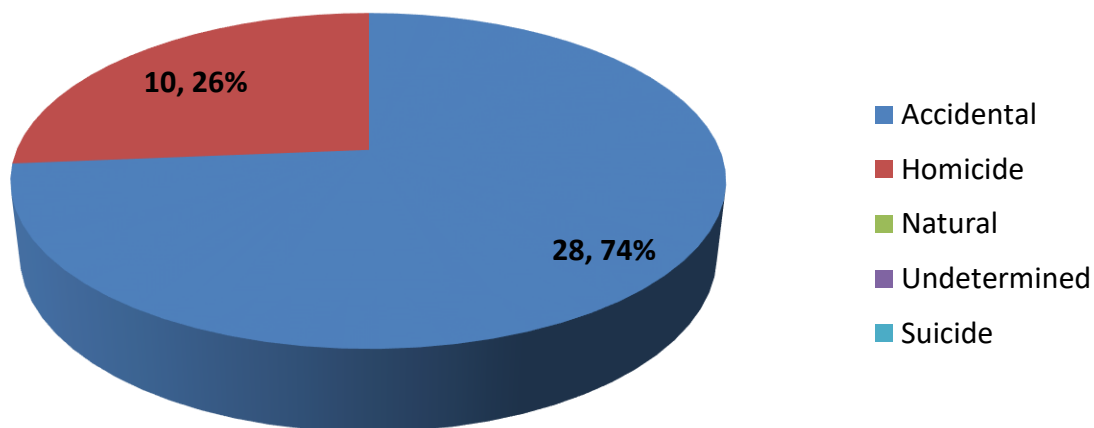
Methamphetamine Detected by Manner
Total: 739 Cases



Heroin Detected by Manner
Total 276



Phencyclidine Detected by Manner
Total: 38 Cases



Fentanyl Detected by Manner
Total 35 Cases

