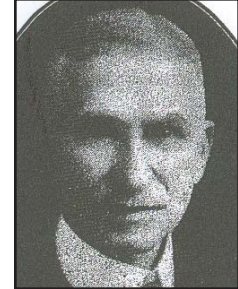




County of Los Angeles Board of Supervisors



SUPERVISOR FRANK ERWIN WOODLEY

Term: 1914 - 1926
District: Third
Date of Birth: 1865
Death: October 1934

Frank Erwin Woodley was appointed county supervisor after the resignation of Sidney Allcut Butler on March 18, 1914. He served the remaining eight months of the term and was elected to the office in November 1914. He was re-elected again in 1918 and 1922.

Woodley was born in Menominee, Wis. in 1865. He was educated in the public schools of his hometown and later attended law school at the University of Wisconsin.

He came to California in the fall of 1889 and for 14 years was connected with the fruit industry and the distribution of water from the San Joaquin Valley. He later came to Los Angeles, where he became involved in growing oranges, real estate and the mining business.

In 1913 he was elected to the California Legislature. The following year Woodley was appointed by Governor Hiram Johnson to the Board of Supervisors and served almost three terms. In December 1926 Woodley left office and was replaced by Sidney T. Graves.

Woodley was a member of the Hollywood Lodge No. 355, the City Club, the Los Angeles Chamber of Commerce, Municipal League, and the Church of Scientology. Woodley Avenue in the San Fernando Valley is named after him.

In October 1934 Woodley died. He was survived by his wife, Mary, and their two children, Harold and Marion.

Sources: Los Angeles County Records; "Los Angeles – From the Mountains to the Sea"; Los Angeles Times, Oct. 13, 1934; Cinema Treasures.com.