

SANTA SUSANA MOUNTAINS TRAILS MASTER PLAN



Los Angeles County
Department of Parks & Recreation

March 6, 2014





OVERVIEW



INTRODUCTIONS

Department of Parks &
Recreation Research & Trails
Planning Section

5th Supervisorial District:
Jarrod DeGonia, Sussy Nemer

Division Chief: Kathy King

Project Manager: Jeremy Bok

Project Team: Lorrie Bradley,
Frank Moreno, James Park,
Olga Ruano, Zachary Likins

Los Angeles County Sheriff's
Parks Bureau

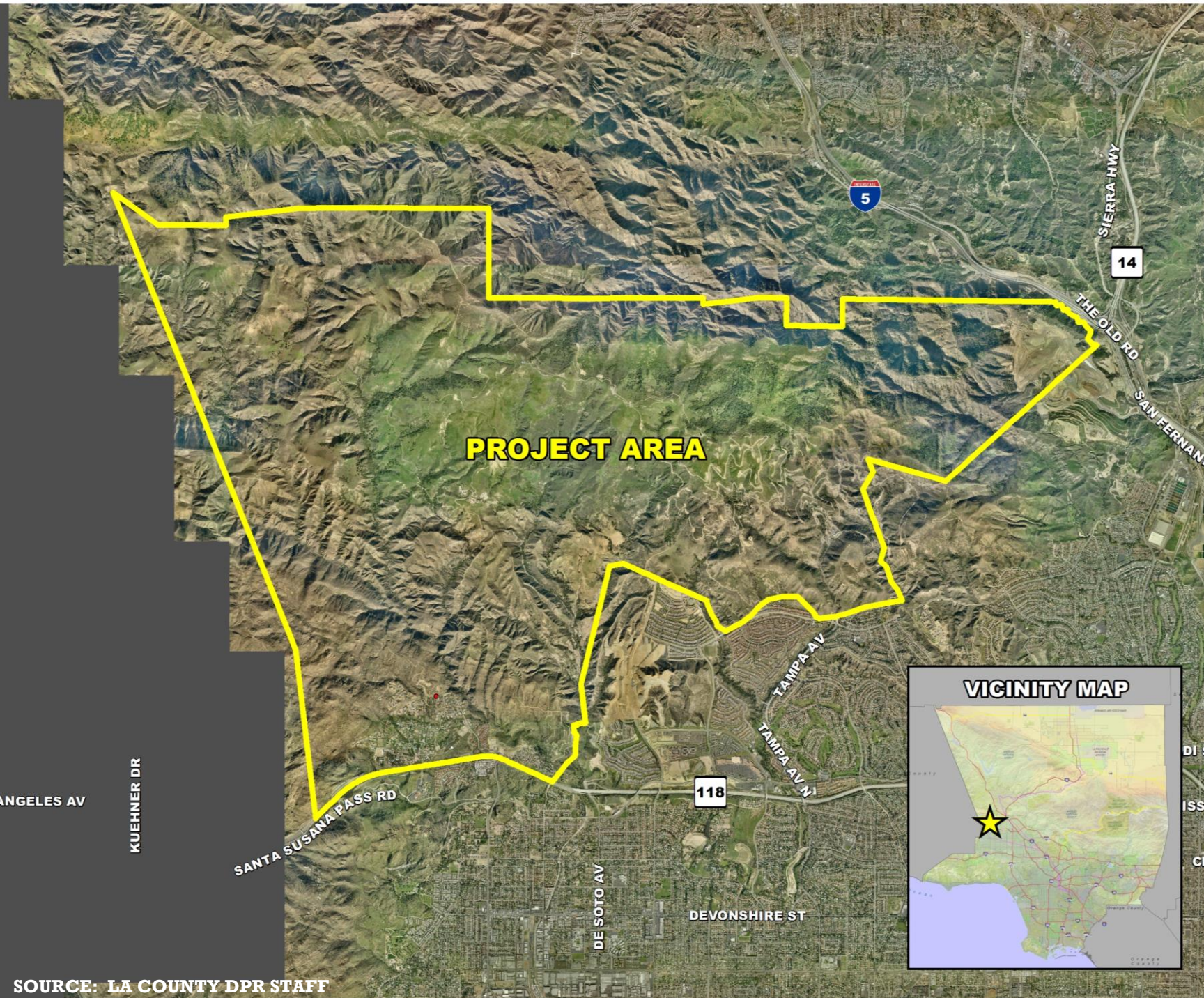




GROUND RULES

- Follow agenda
- Stay focused on intent of meeting
- Acknowledge differences of opinion
- Show mutual respect
- Don't interrupt
- Turn cell phones off





PROJECT AREA / VICINITY MAP





BACKGROUND

Project Initiation:

April, 2012

1st Public Agency Meeting:

July, 2012

1st Community Meeting:

August, 2012

1st Newsletter:

July, 2013

Draft Plan:

Sept, 2012 - Feb, 2014

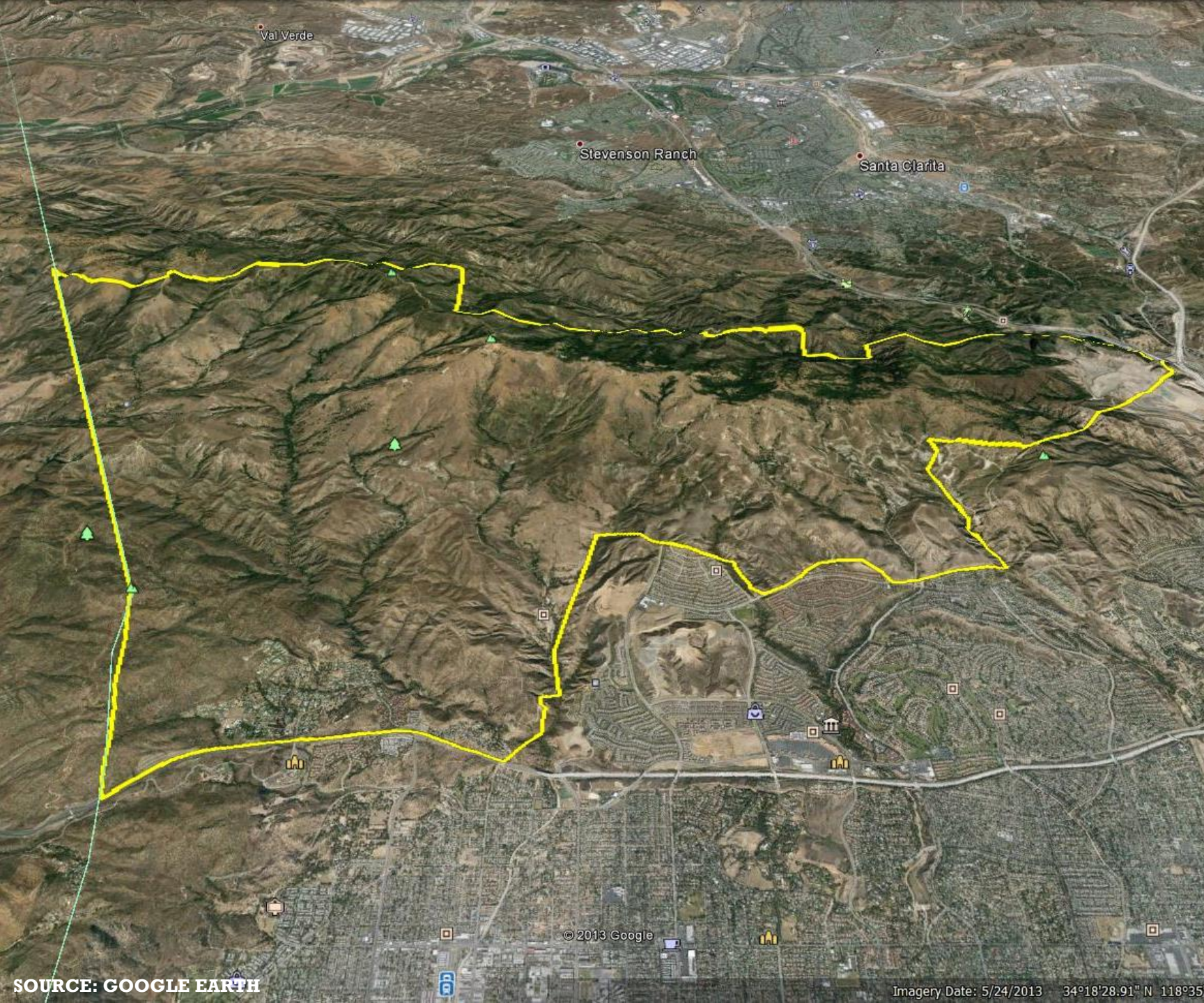
2nd Public Agency Meeting:

February, 2014

2nd Community Meeting:

Tonight





BENEFITS OF A LONG RANGE PLANNING TOOL

- Addresses unmet needs of trail users
- Conveys vision of a trails network
- Improves regional trail connectivity and access
- Allows DPR to prioritize trail development
- Accounts for environmental, economic, and engineering factors





RECAP OF FIRST COMMUNITY MEETING

- Introduced the project
- Discussed the benefits of having a long range planning tool
- Asked for input from trail stakeholders
- Attendees provided input of trail priorities, use patterns and concerns





PLANNING APPROACH



METHODS

- Public input
- Stakeholder meetings
- On-the-ground analysis of select areas
- Reviewed aerial photography
- Gap analysis





FINDINGS

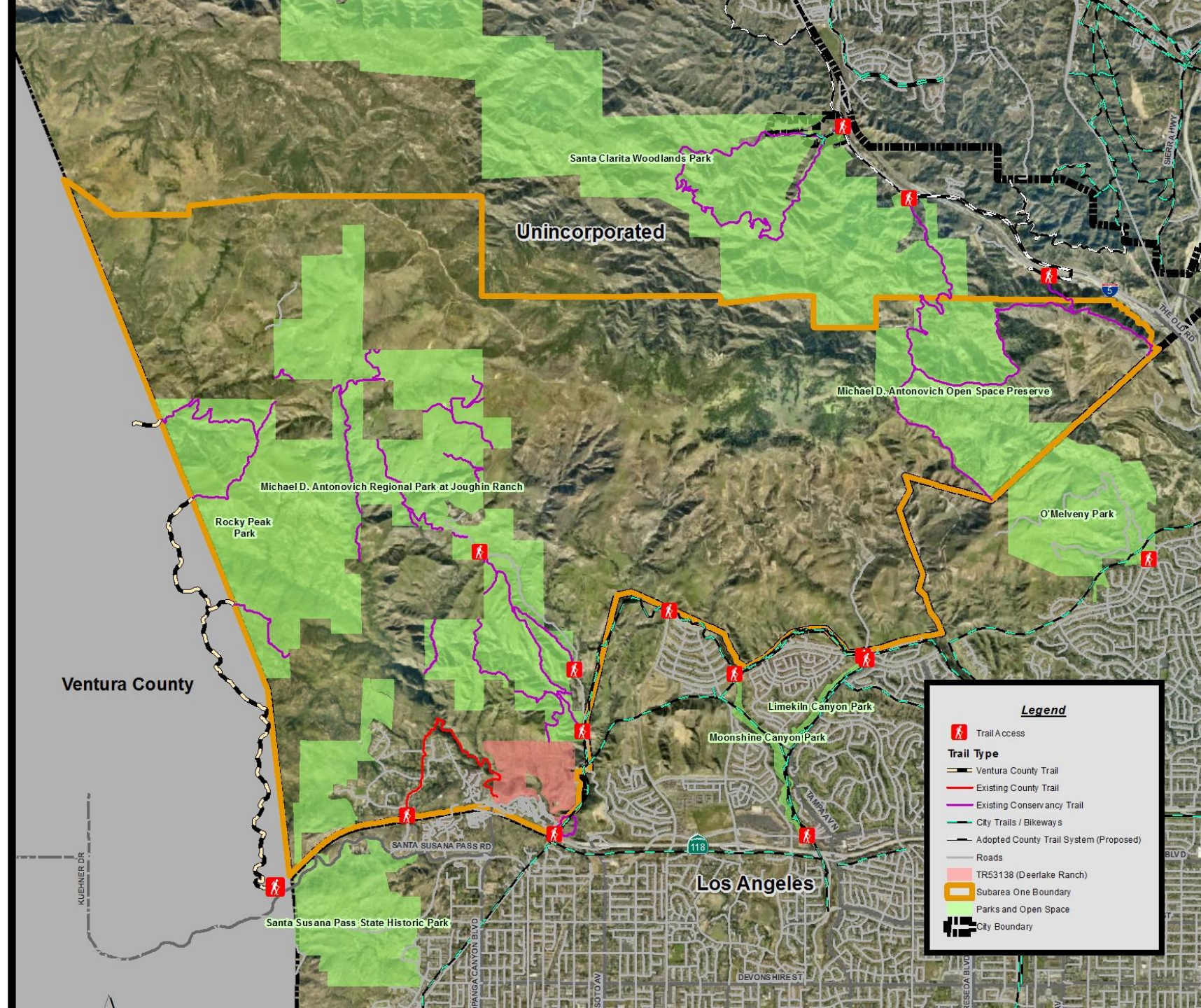
Lack of Connectivity to:

- Public open spaces
- Existing official trails
- Ventura County
- City trails





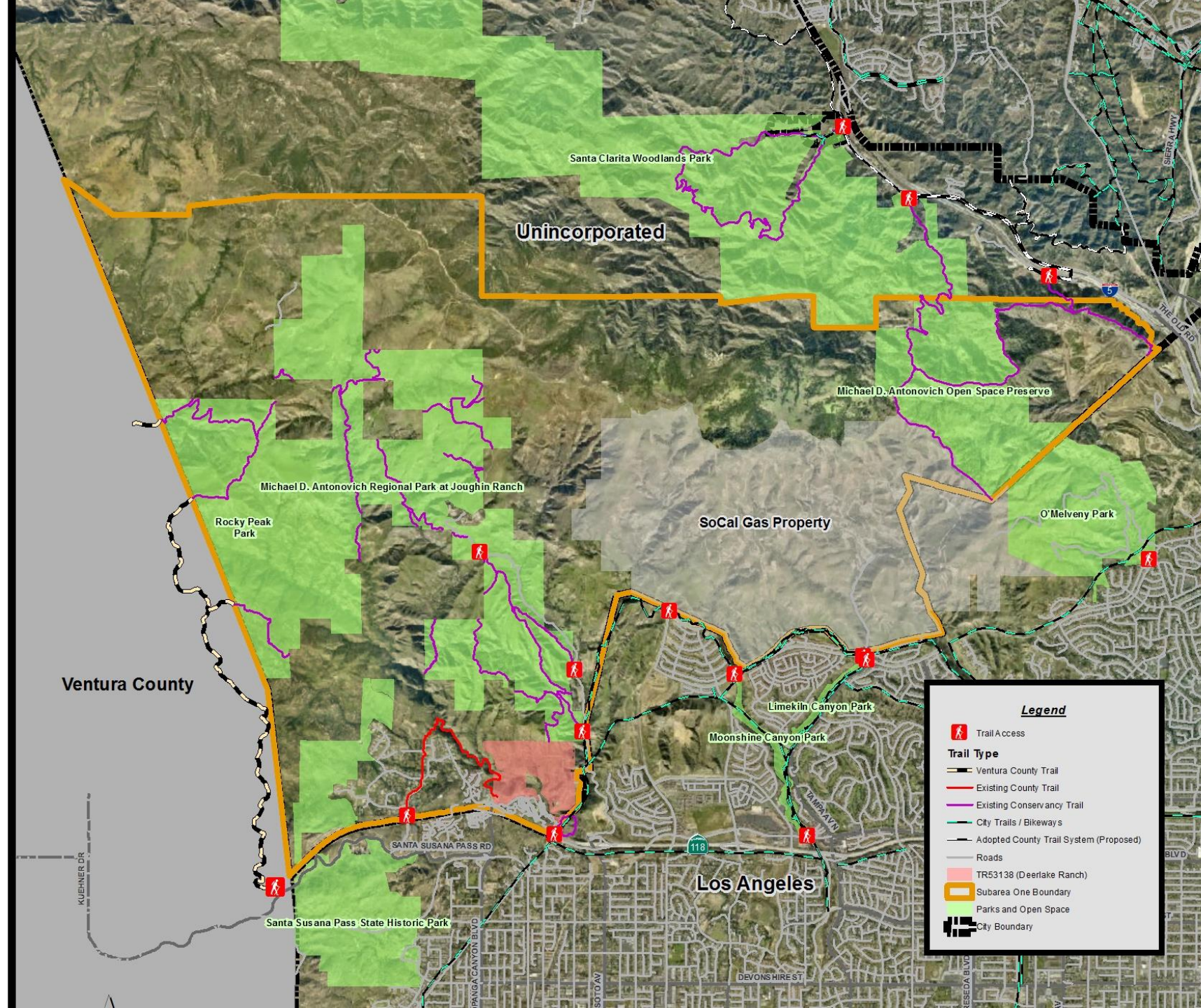
DRAFT PLAN



BIG PICTURE CONNECTIVITY

- North / South
- East / West
- Existing trails & trailheads
- Designated open space
- Cities / Counties
- Planned trails (subdivisions)
- Fill in the gaps





UTILITIES

- Natural gas
- Oil
- Telecommunications

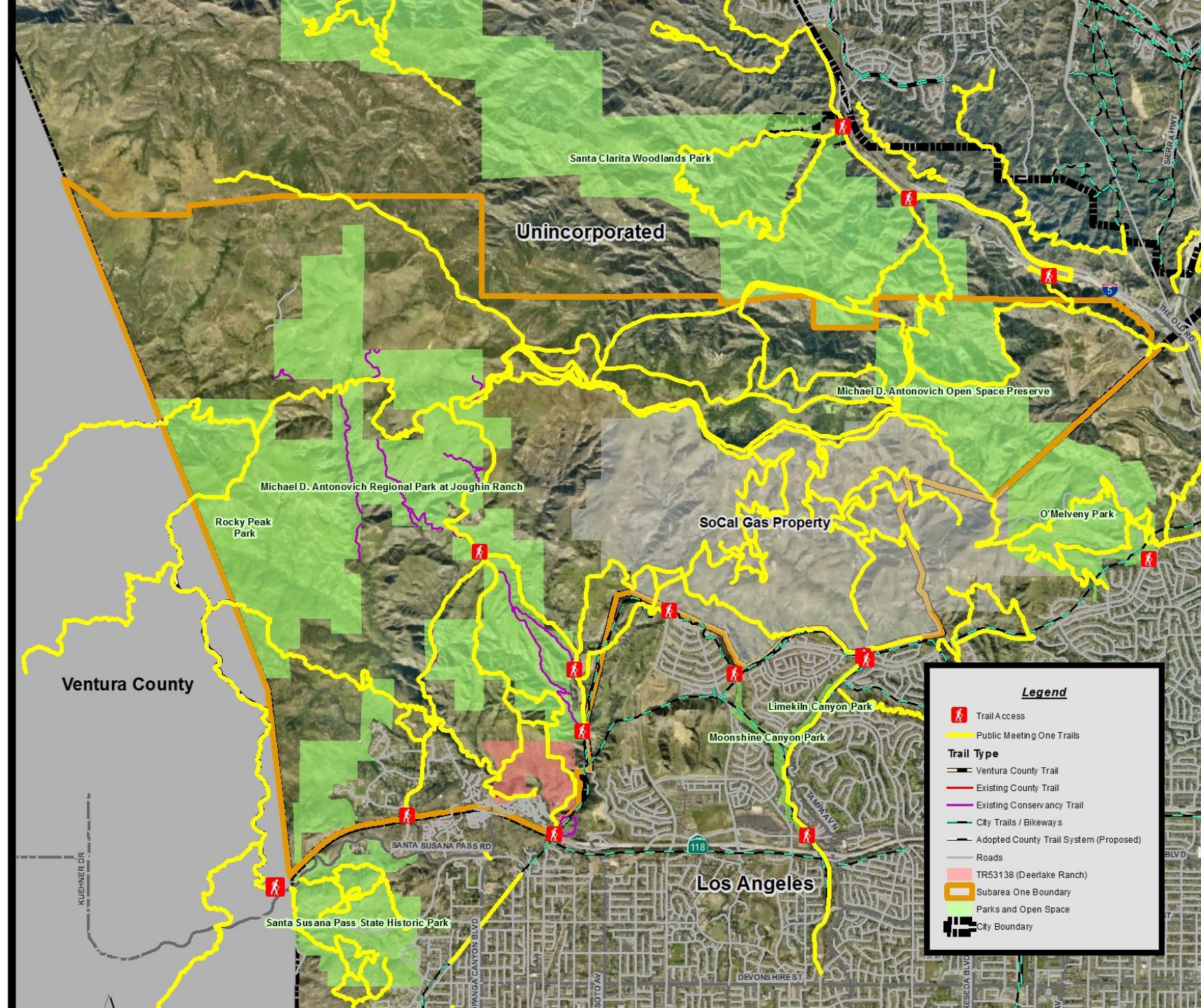
Actively operating facilities

- Safety concerns
- Hazardous materials
- Service vehicles along dirt roads

Facility concerns

- Trespassing
- Vandalism





RESULTS OF 1ST COMMUNITY MEETING

- Verify trails via aerial photography (high resolution)
- Historical trails (Rim of the Valley)
- Streamline the regional trail system
- Sustainable trails





IMPLEMENTATION



TRAIL OPPORTUNITIES

- Obtain easements through development projects
- Purchase of easements
- Donation of easements





FOSTERING PARTNERSHIPS

- Other jurisdictions
- Non-profits
- Property owners
- Conservancies





NEXT STEPS

PUBLIC REVIEW DRAFT JANUARY 2014 TEXT-ONLY VERSION

Los Angeles County

General Plan 2035

ADOPTION PROCESS

- Incorporate into General Plan Update
- Regional Planning Commission Hearing:
March 26, 2014

<http://planning.lacounty.gov/generalplan>





GROUND RULES FOR COMMENTING

- 2 ways to comment
 - Comment card
 - Speaker card
- Must fill out speaker card to speak
- 2 minute maximum to speak
- Please be constructive
- Please respect the speaker





PARKS.LACOUNTY.GOV