



THE GREEN SCENE

SPECIAL EDITION

Department of Parks and Recreation Hard Hit by Recent Windstorms

The recent Santa Ana winds that devastated parts of Los Angeles County on the evening of November 30, 2011 did not leave our parks and facilities untouched. Fifteen parks reported immediate loss of power. Thirty-three of our parks suffered severe damages to plants, trees and structures. The biggest casualties of the storm were our trees, many of which toppled over at their roots and many more severely damaged.

Los Angeles County Mayor Michael D. Antonovich declared a state of emergency for the County of Los Angeles and Governor Jerry Brown proclaimed a state of emergency for Los Angeles County and City of Rancho Cucamonga.

In the early stages of the windstorm aftermath, six parks and golf courses closed to the public for clean up and recovery from severe windstorm damage. Arcadia County Park, Altadena Golf Course, Eaton Canyon Golf Course, Santa Anita Golf Course, Descanso Gardens and the Los Angeles County Arboretum and Botanic Garden were closed and a collaborative effort among Los Angeles County Mayor Michael D. Antonovich, the Chief Executive Office and its County Office of Emergency Management, the Los Angeles County Sheriff's Department, the Los Angeles County Department of Public Works and the County of Los Angeles Department of Parks and Recreation enabled a comprehensive, strategic cleanup response.

Swift and careful response by our own Parks Tree Crew, Grounds Maintenance, Trails Division, Tree Farm Crew, Los Angeles County Arboretum staff, Descanso Gardens staff and the Transportation Crews as well as Tree Crews from the Los Angeles County Department of Public Works, the Los Angeles County Agricultural Commissioner/Weights and Measures, and the Los Angeles County Fire Department allowed three of our closed facilities to reopen quickly, a few in a limited capacity. Currently, only the Arboretum remains closed for clean up and repair, although the Peacock Café, Arboretum Gift Shop and Arboretum Library are now open to the public.

Department-wide, an estimated 1,300 trees were impacted including a loss of approximately 600 trees. Seven hundred trees were damaged. These trees spanned a wide variety of species and ages, some of them were hundred year old Oak Trees. The value of the trees that we lost are in the millions of dollars, still being estimated as of this printing.

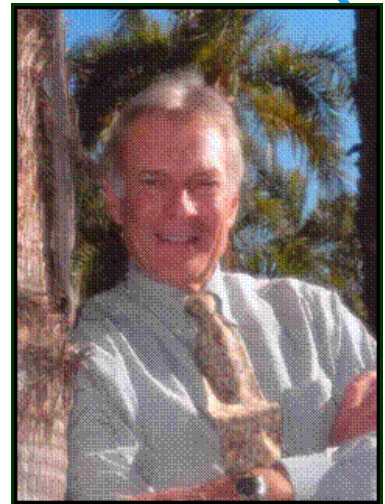
If you haven't witnessed the effects of the damage first hand, see the photos in this issue for an idea of the magnitude of our Department's loss from our hardest hit parks that required public closures.

CONTENTS

DIRECTOR'S MESSAGE	2
DIRECTOR RECEIVES DELEGATED AUTHORITY	2
PHOTOS FROM 2011 WINDSTORM	3-6
PHOTOS FROM WINDSTORM CLEAN UP EFFORTS	7-9

A Message From the Director

The recent windstorm that left Los Angeles County in a state of emergency was the worst that has hit our Department in many, many decades. Cities, streets and homes were ravaged by winds, but the damage to our parks were amazing to behold as well. Hundred year old trees, some more than 50 feet tall, were broken in half, pieces strewn about like toothpicks. Though many of our beloved trees broke, our spirit and energy did not. I am so proud of our Department — at all levels — for the immediate response and action taken in the wake of this devastation. From the tree crews and grounds maintenance out in the field cleaning and making our parks safe again for the public, to our administrative team working on emergency response funding to get our crews the equipment and personnel needed to get their job done, to our swift and regular notification to our patrons on which parks were again available for their use. This event is also a perfect example of how our Department is part of a larger County family, one that comes to mutual aid and assistance when needed. Tree crews from the Los Angeles County Department of Public Works, Los Angeles County Fire Department and Los Angeles County Agricultural Commissioner/Weights and Measures marshaled forces to assist our own Parks Tree Crews to clean up and help with our recovery. Los Angeles County Sheriff's Parks Bureau stepped up patrols to ensure that the public did not enter our closed parks and hurt themselves in the process. The leadership shown by Mayor Michael D. Antonovich, the CEO and its Office of Emergency Management was one our Department could follow with security knowing that we were all in this together.



Russ Guiney, Director

As we approach the holidays, we have yet another thing to be thankful for, our health and the progress we are slowly making to rebuild what we have lost. As your Director, I am thankful for your continued dedication and commitment to this Department. It is people like you who make working for the Department of Parks and Recreation not just joyous during happy times, but hopeful and manageable during our times of need. Thank you and as always, keep up the great work!

**Parks
Make
Life
Better!**

Director Russ Guiney Receives Delegated Authority



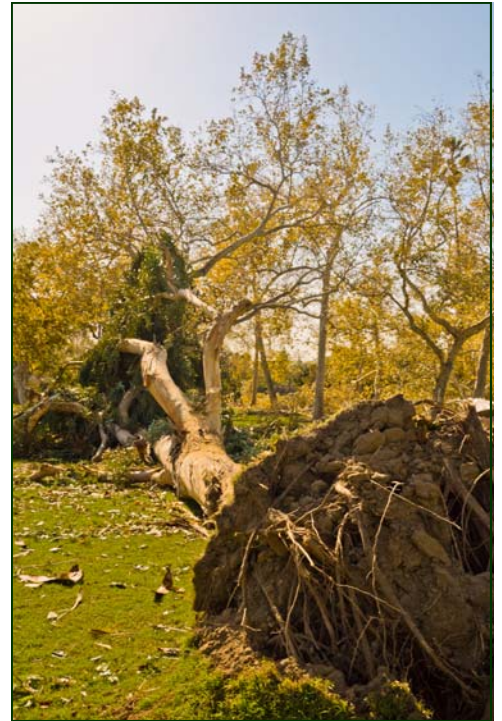
As the Department scrambled to find all the needed resources to clean up after the windstorm, many members of our team went the extra mile to provide assistance or come up with innovative ideas to help. Kandy Hays, Division Chief of the Contracts, Golf and Special Districts Division realized that we have a large number of landscape service companies under contract who could help if we could quickly amend their contracts to allow us to exceed present scope of work and spending limits. She worked with her Contract Manager Chris Kinney who drafted a board motion that would allow this to happen. By the Monday following the windstorm, the motion had been written by Chris and approved by the CEO and County Counsel and Supervisor Michael D. Antonovich brought in the emergency motion. The Board approved the motion and this week landscape contractors were onboard assisting in the clean-up efforts thanks to the creative thinking and swift action of Kandy Hays, Chris Kinney and the staff of the Department's Contracts Unit.

Director Russ Guiney signs amendments to the current landscaping contracts. (Pictured L-R standing: Kandy Hays, Chris Kinney; sitting: Director Russ Guiney, Chief Deputy Director John Wicker)

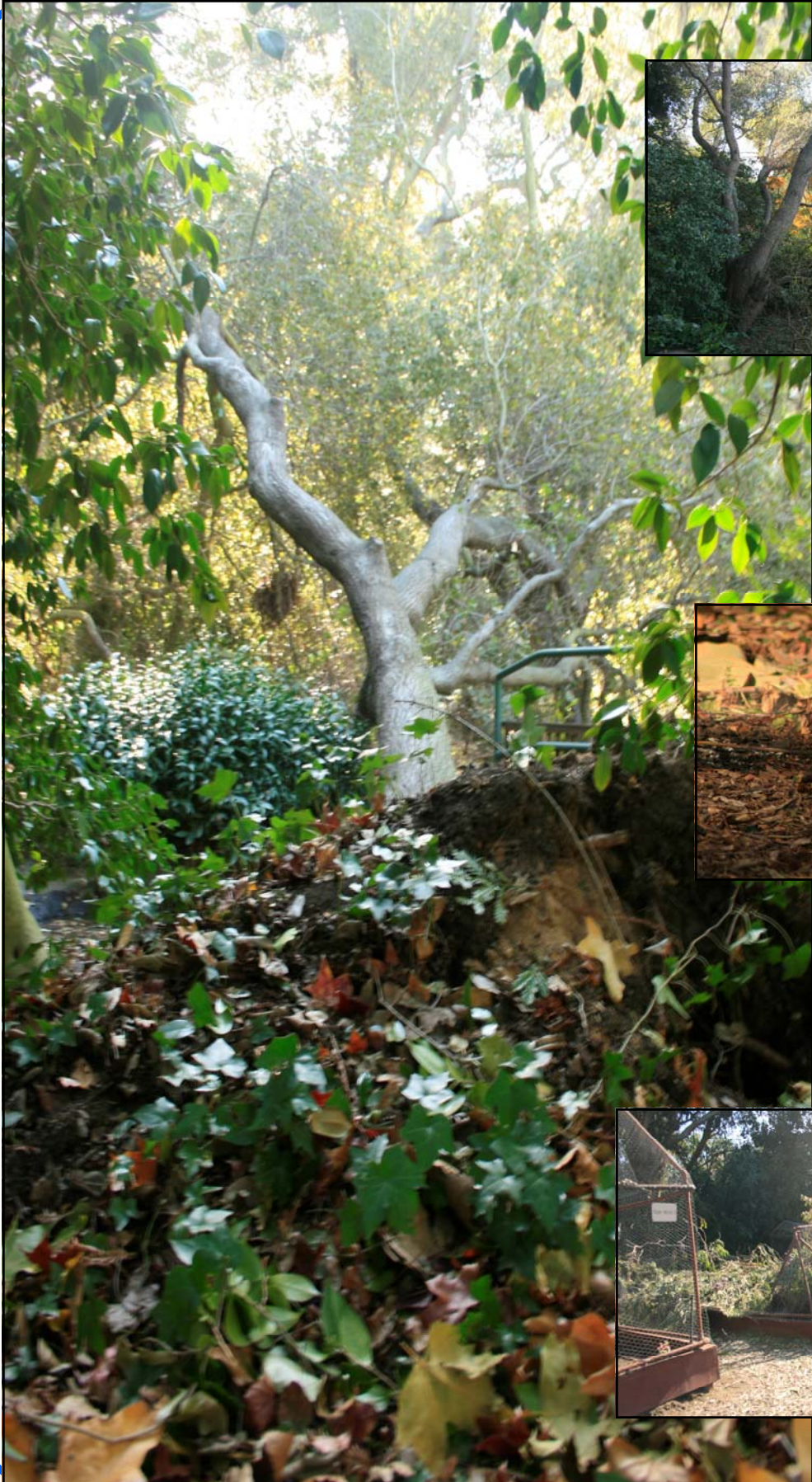
Images of Windstorm Devastation at Los Angeles County Arboretum and Botanic Garden



Images of Windstorm Devastation at Arcadia County Park

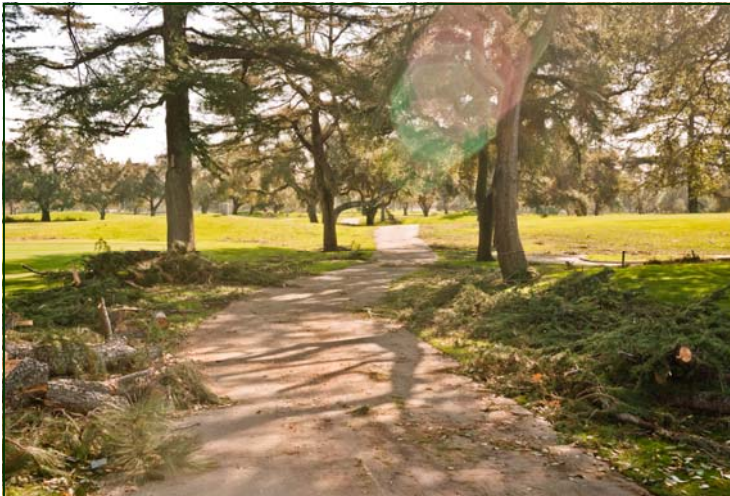
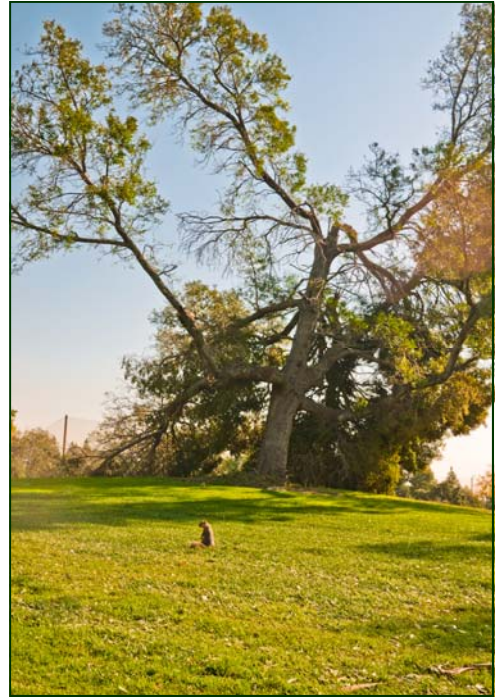


Images of Windstorm Devastation at Descanso Gardens



"To Enrich Lives Through Effective and Caring Service"

Images of Windstorm Devastation at Santa Anita Golf Course



Crews from Parks and Recreation, Department of Public Works, Agricultural Commission and L.A. County Fire Worked Together for Complete and Strategic Clean Up of Parks



Crews from Parks and Recreation, Department of Public Works, Agricultural Commission and L.A. County Fire Worked Together for Complete and Strategic Clean Up of Parks





**County of Los Angeles
Board of Supervisors**

**Michael D. Antonovich
Mayor
Fifth District**

**Gloria Molina
First District**

**Mark Ridley-Thomas
Second District**

**Zev Yaroslavsky
Third District**

**Don Knabe
Fourth District**

**Department of
Parks and Recreation**

**Russ Guiney
Director**

**John Wicker
Chief Deputy Director**

**Kaye Michelson
Special Assistant**

*The Green Scene is published by the Public
Information
Office*

**Imee Gacad Perius
Editor**

**Joyce Fitzpatrick
Assistant Editor**

433 South Vermont Avenue
Los Angeles, CA 90020
(213) 738-2961

iperius@parks.lacounty.gov

<http://lacounty.info/>

<http://parks.lacounty.gov>