

SYSTEM LEADERSHIP TEAM
County of Los Angeles
Department of Mental Health

St. Anne's Auditorium
September 17, 2014
9:30-12:30

Reasons For Meeting

1. Update: Los Angeles County Department of Mental Health
2. Review: Health Neighborhood Case Study
3. Planning & Learning: Continue Planning Health Neighborhood Approach
4. Clarify: Next Steps

AGENDA

- | | |
|-----------------------------|-------------|
| 1. Meeting Opening | 9:30-9:40 |
| 2. LAC-DMH Updates | 9:40-10:00 |
| 3. HN Approach-A Case Study | 10:00-10:30 |
| 4. Small Group Work | 10:30-11:30 |
| 5. Large Group Discussion | 11:30-12:15 |
| 6. Next Steps | 12:15-12:25 |
| 7. Public Comment | 12:25-12:30 |
| 8. Adjourn | 12:30 |

QUESTIONS

1. **What is the learning question(s)?**
 - What do you want to learn?
 - What is your hypothesis?
2. **What is the strategy (or approach we want to learn about)?**
 - What are the components of the strategy?
 - What makes this strategy innovative?
3. **Does the strategy need a Health Neighborhood approach?**
4. **What will DMH do differently based on the learning?**
 - How can it be applied, disseminated?

GENERAL QUESTION

- Can a health neighborhood approach prevent and/or reduce trauma for a population?

REFLECTIONS

- A learning journey for everyone: innovation is already happening.

REFLECTIONS

- Facilitator-to-expert to limits of my expertise.

REFLECTIONS

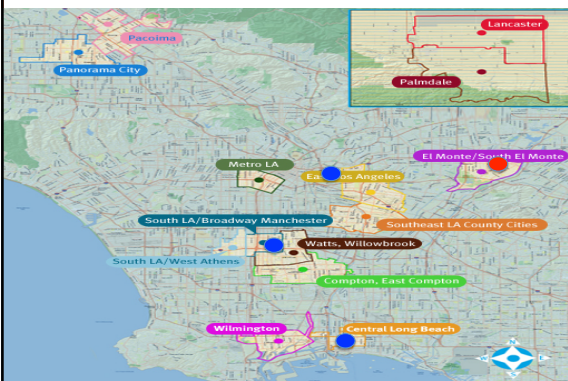
- Everyone's questions, everyone's answers.

A Place-Based Platform for a Health Neighborhood

Los Angeles County

- The California Community Foundation
- The California Endowment
- First 5 Los Angeles: Best Start

Place-Based Initiatives

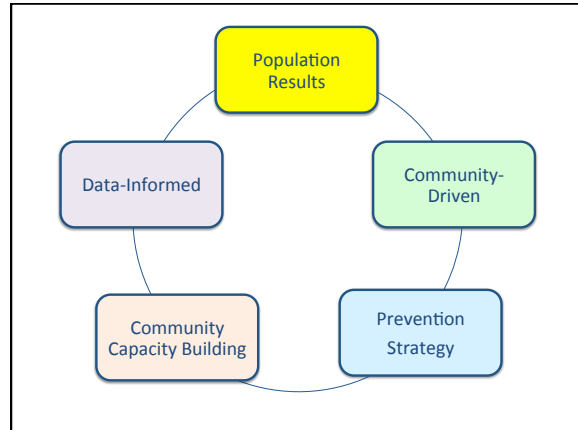


National

- *Making Connections*, Annie E. Casey Foundation
- *Strong Families and Neighborhoods*, Ford Foundation
- *Comprehensive Community Initiatives*, Aspen Institute

National

- Neighborhood Revitalization Initiatives (NRI)
 - DOE, HUD, DOJ, DHHS, Treasury
 - Promise Neighborhood, Choice Neighborhoods, Promise Zones, Building Neighborhood Capacity, etc.



POPULATION RESULTS

Population

- Total population in an area.
- Sub-set of the population.

Result

- Condition of Well-Being in a Population
 - Children are born healthy.
 - Children are ready for school.
 - Students are prepared for college.
 - Residents are safe in their neighborhoods.

POPULATION RESULTS

Population: All high school seniors in the area (5,000)

Result: Students are prepared for college.

Indicators

1. # and % of students who graduated in 2015.
2. # and % of students who graduated with A-G requirements with a B or above.
3. # and % of 10th grade students on track for completing the A-G requirements.

POPULATION RESULTS

Population: All high school seniors in the area (5,000)

Result: Students are prepared for college.

Population Indicators ???

1. # and % of Upward Bound students who graduated in 2015.
2. # and % of students in the tutoring program who graduated with A-G requirements with a B or above.

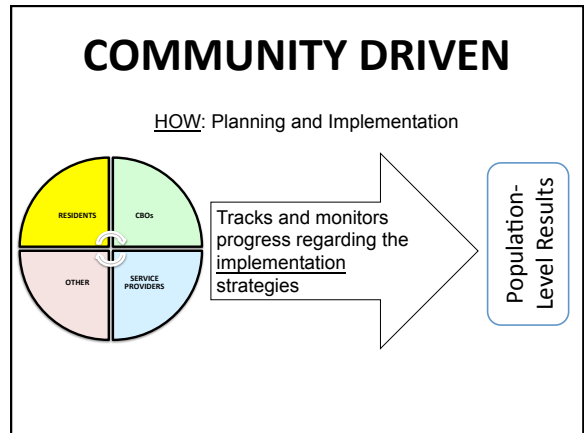
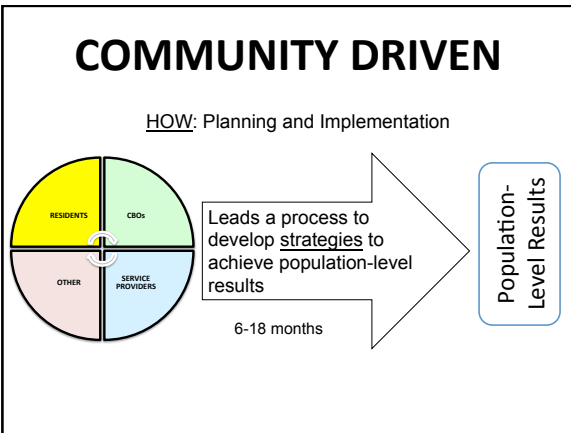
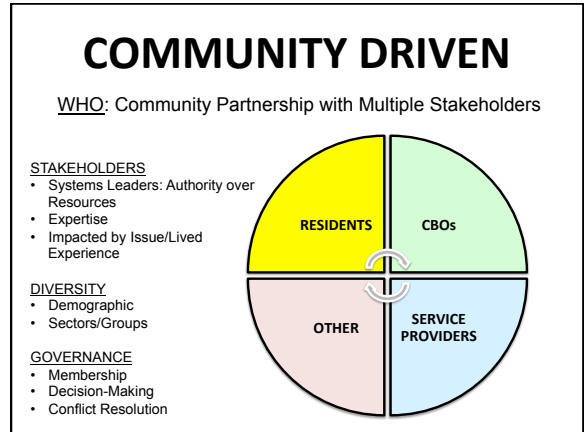
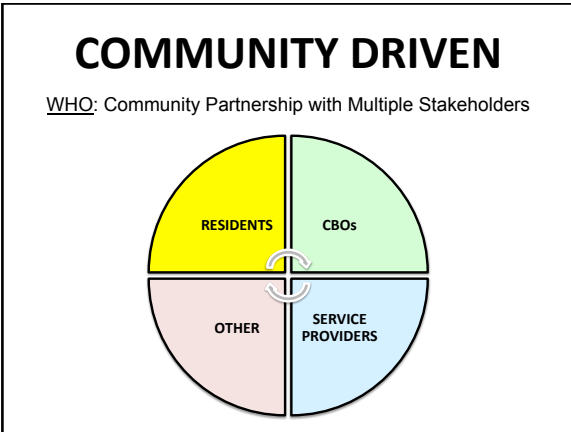
POPULATION RESULTS

Population: All high school seniors in the area (5,000)

Result: Students are prepared for college.

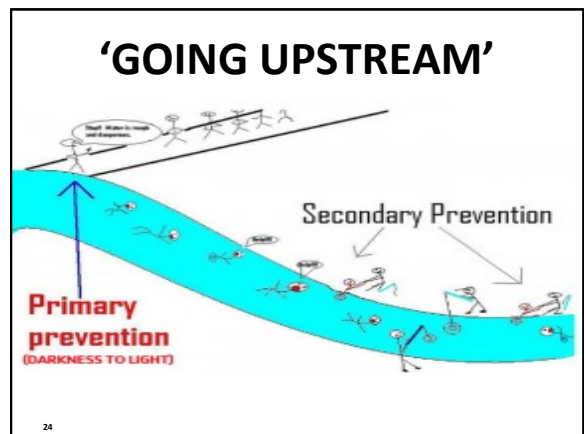
All high school students

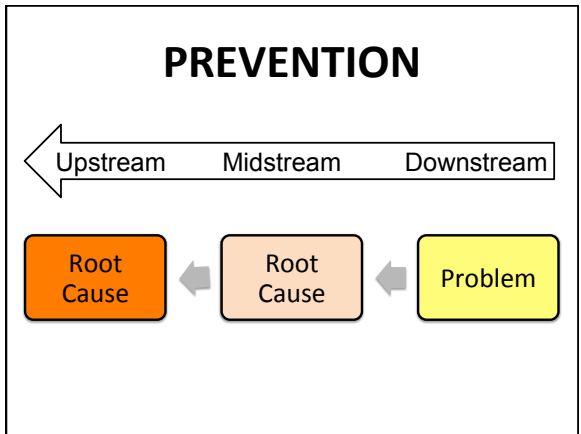
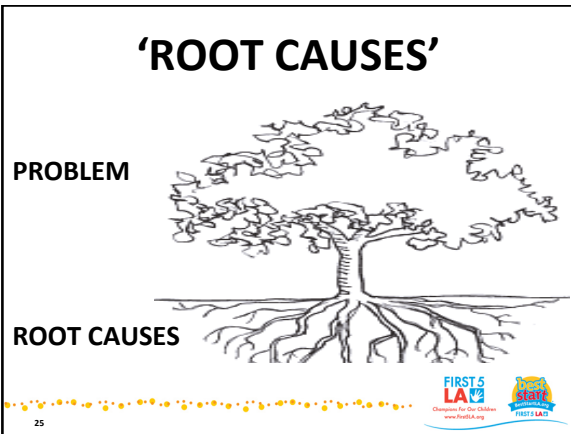
High school seniors enrolled in a program or obtaining a service.



PREVENTION

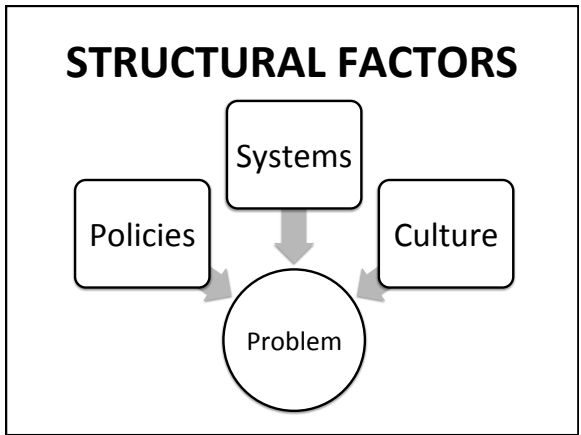
- Focuses attention not just on treating a problem (i.e., direct service), but on preventing it from happening.





STRUCTURAL FACTORS

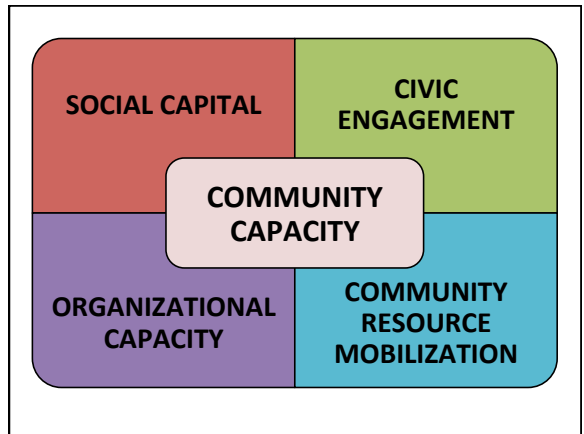
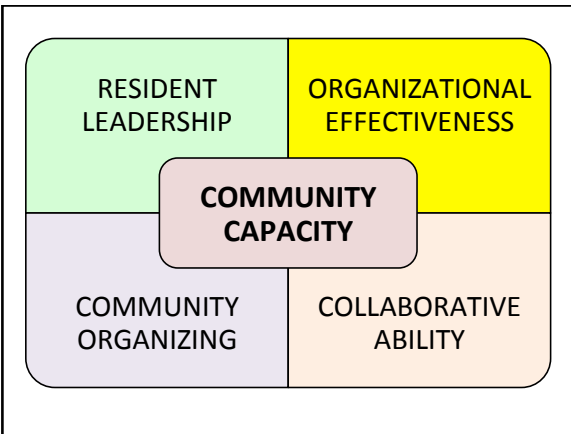
The conditions, including but also going beyond individual behaviors, that are contributing to a problem.



- ## STRUCTURAL FACTORS
1. Policies: Laws, regulations, rules aimed at achieving a goal.
 2. Systems: Processes, roles, practices by which to implement policies.
 3. Culture: Community beliefs, norms, behaviors, etc.

COMMUNITY CAPACITY

- The ability of neighborhood residents, organizations and collaboratives—working together—to improve results for children and families.



DATA-INFORMED

- How can the public mental health system contribute to population-level mental health outcomes in particular places?

OTHER ITEMS

- Service/Treatment Strategy versus Prevention Strategy?
- Limits to Expertise?
- Organizational Interests?

OTHER ITEMS

- Focusing on preventing or reducing 'trauma.'
- Not just one strategy per age group.

QUESTIONS

- 1. What is the learning question(s)?**
 - What do you want to learn?
 - What is your hypothesis?
- 2. What is the strategy (or approach we want to learn about)?**
 - What are the components of the strategy?
 - What makes this strategy innovative?
- 3. Does the strategy need a Health Neighborhood approach?**
- 4. What will DMH do differently based on the learning?**
 - How can it be applied, disseminated?