



# PHARMACY SERVICES

Office of the Medical Director

Contact the Editor: [OMD@dmh.lacounty.gov](mailto:OMD@dmh.lacounty.gov)

## The Pharmacy Connection

A forum for pharmacy related news and updates for DMH programs

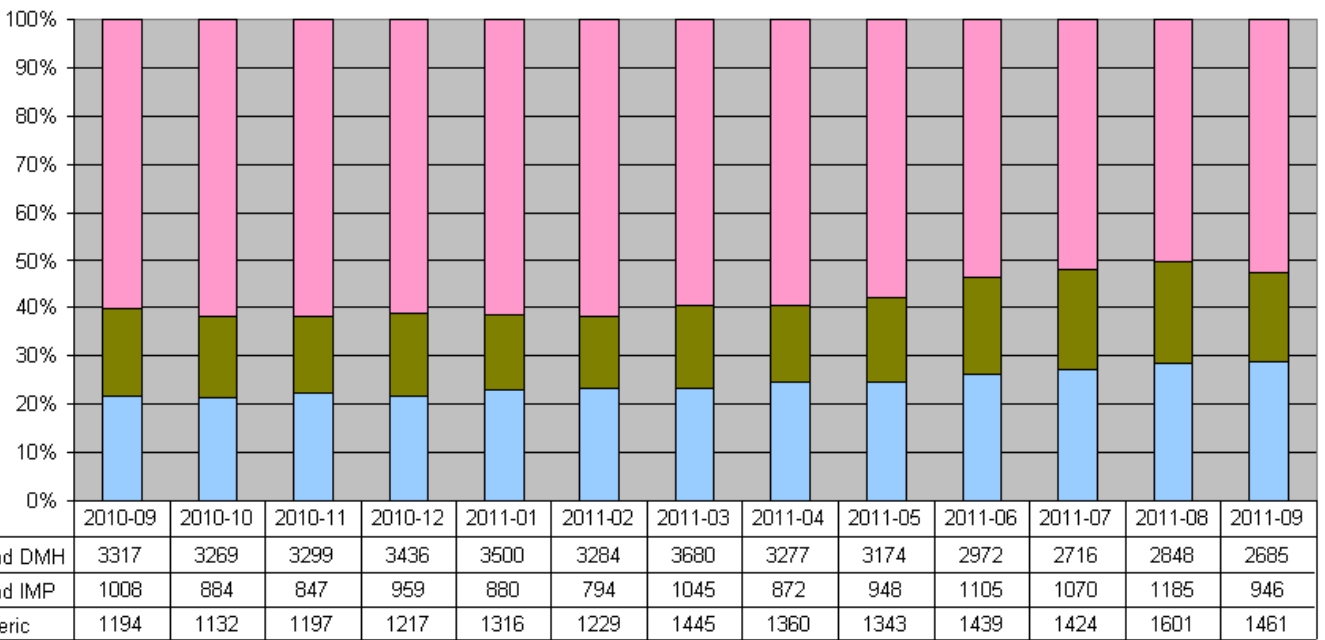
October 12, 2011

### A Message from the Medical Director, Roderick Shaner, M.D.

All of us are aware of the remarkable price differences between generic and branded medications within each class of medications. For this reason, it is critically important that we, as prescribers, be able to clinically justify our selection of particular medications, and that we, as a system, can explain practice variation among prescribers and programs.

Toward this end, the Department has initiated a system to track the percentage of prescriptions for antipsychotic medications, branded versus generic, within each DMH program. This tracking system will allow the Department to develop a credible basis for ensuring a clinically sound allocation of resources for the medications that we must have available. The graph below represents the overall Departmental percentages over the last year. It shows that our use of generic medication relative to branded medication has been increasing.

**Indigent Antipsychotic Prescriptions by Type  
(Directly Operated Programs)**



The percentages for individual programs will be presented at each Strategies for Total Accountability and Total Success (STATS) meeting, starting on Monday, October 17<sup>th</sup>, 2011. Our supervising psychiatrists will be present to address any unusual variances from overall Departmental practices and answer questions from the executive staff.

To access previous bulletins, go to the DMH Pharmacy webpage: [http://dmh.lacounty.gov/wps/portal/dmh/clinical\\_tools/clinical\\_pharmacy](http://dmh.lacounty.gov/wps/portal/dmh/clinical_tools/clinical_pharmacy)

