



## The Blue Ribbon Commission on Child Protection

# Report and Recommendations on Cross Sector Collaborations Affecting Child Safety

*Marilyn Flynn, PhD*  
*Blue Ribbon Commission*  
*Dean, University of Southern California School of Social Work*



---

# Assessing Frontline Provider Perspectives

72 focus  
groups

312 individuals

DCFS, DMH, Probation, Health Care,  
Faith Based Community, and Child  
Welfare Agencies



---

# Three Major Challenges to Improved Child Protection

**Focus on compliance, instead of program incentives and outcomes**

**Many good ideas, weak implementation**

**Breakdown in community partnerships**





# Contracting Processes, Community Partnerships, and Program Outcomes that Protect Children

# Scope of DCFS Contracts, 2013

DCFS Bureau of  
Contract Services



444 Contracts

550 Million Dollars

7,000 Families



---

# Recommendations



Foster Partnership and Collaboration

Developmental Approach

Redesign of the RFP

Performance Contracting Practices

Master Contracting Methodology

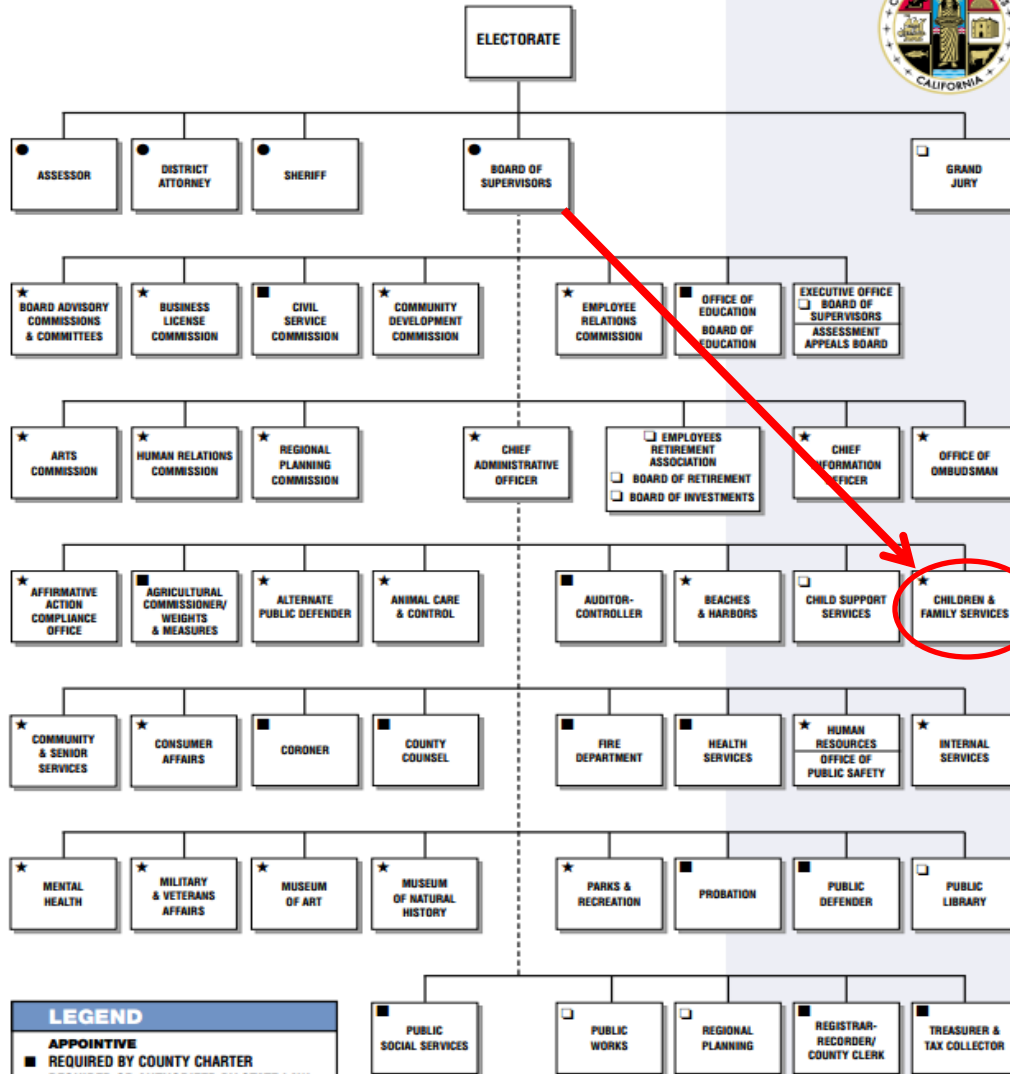


---

# Policy Direction for County Department Heads



## Organizational Chart of the County of Los Angeles

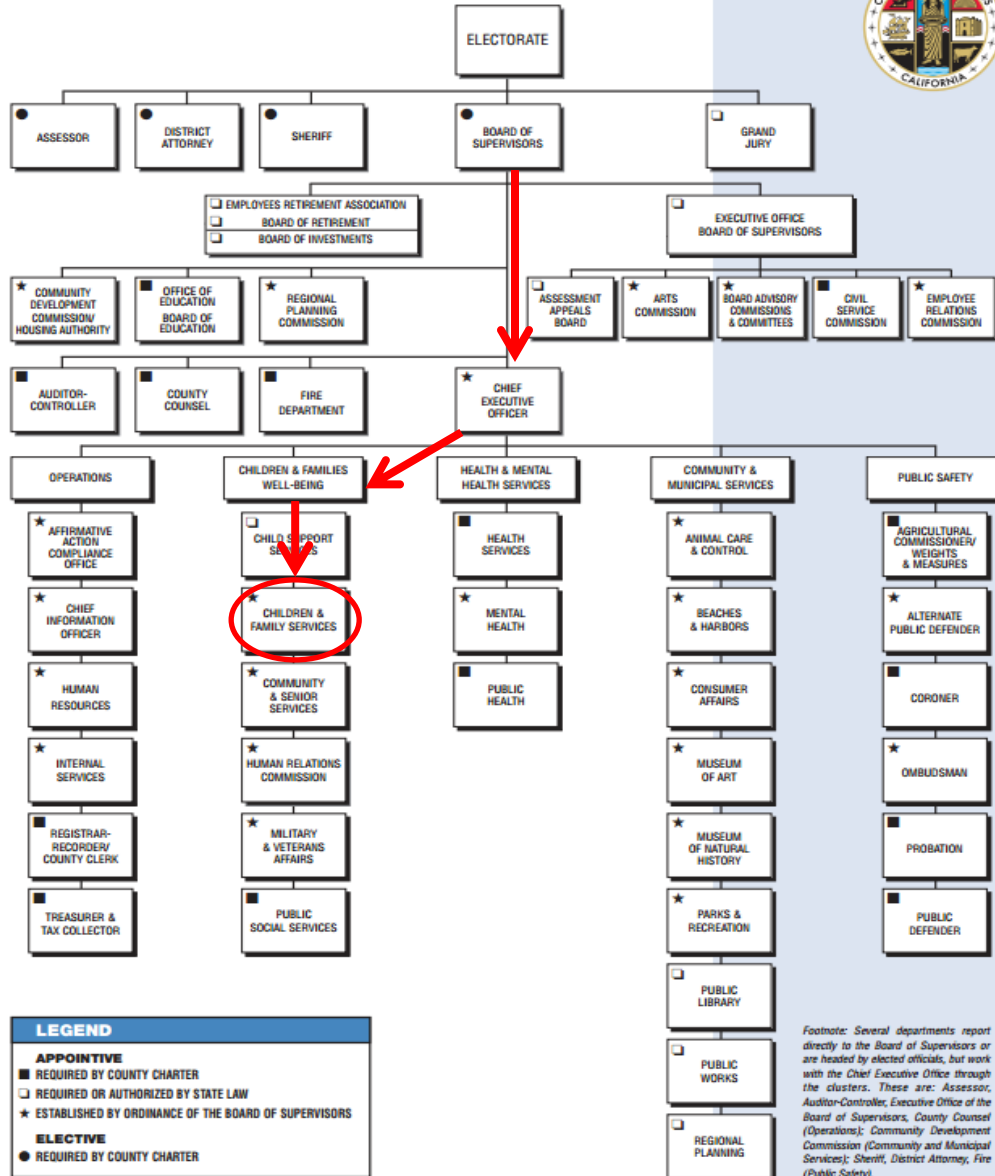


LEGEND	
<b>APPOINTIVE</b>	
■	REQUIRED BY COUNTY CHARTER
□	REQUIRED OR AUTHORIZED BY STATE LAW
★	ESTABLISHED BY ORDINANCE OF THE BOARD OF SUPERVISORS
<b>ELECTIVE</b>	
●	REQUIRED BY COUNTY CHARTER
○	REQUIRED BY STATE LAW/STATE AGENCIES FOR WHICH COUNTY RETAINS LIMITED RESPONSIBILITY





## Organizational Chart of the County of Los Angeles



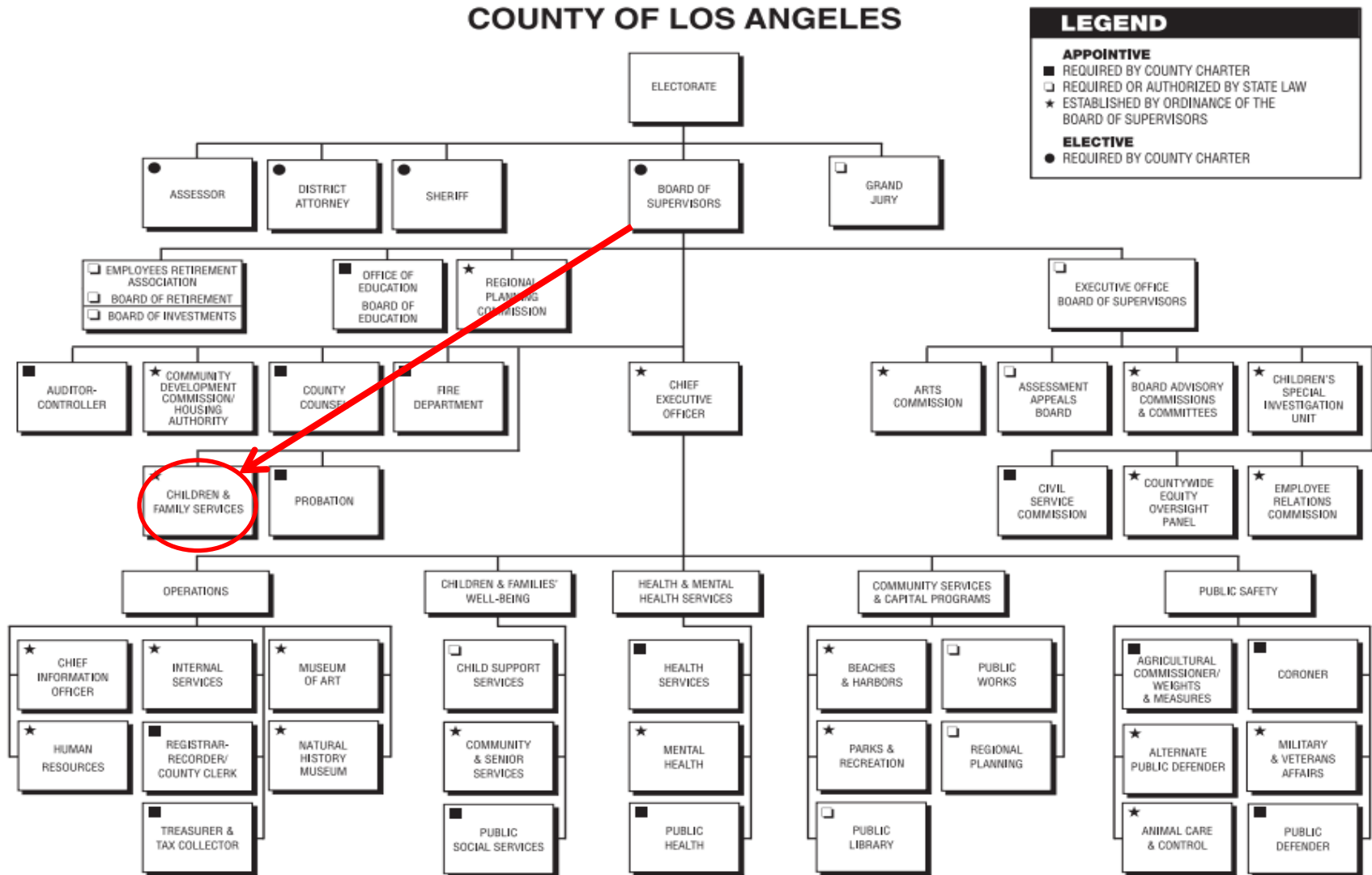
**LEGEND**

- APPOINTIVE
- REQUIRED BY COUNTY CHARTER
- REQUIRED OR AUTHORIZED BY STATE LAW
- ★ ESTABLISHED BY ORDINANCE OF THE BOARD OF SUPERVISORS
- ELECTIVE
- REQUIRED BY COUNTY CHARTER

Footnote: Several departments report directly to the Board of Supervisors or are headed by elected officials, but work with the Chief Executive Office through the clusters. These are: Assessor, Auditor-Controller, Executive Office of the Board of Supervisors, County Counsel (Operations); Community Development Commission; Community and Municipal Services; Sheriff, District Attorney, Fire (Public Safety).



# Current Structure



Footnote: Several departments report directly to the Board of Supervisors or are headed by elected officials, but work with the Chief Executive Office through the clusters. These are: Assessor, Auditor-Controller, Executive Office of the Board of Supervisors, County Counsel (Operations); Community Development Commission (Community Services and Capital Programs); Children & Family Services (Children & Families' Well-Being); Sheriff, District Attorney, Fire, Probation (Public Safety).

---

# Recommendations

Schedule an Annual  
Briefing

Few Clear Cross-  
Sector Policy Priorities

Leadership Retention and  
Transition



# Improved Workforce Training for Child Protection



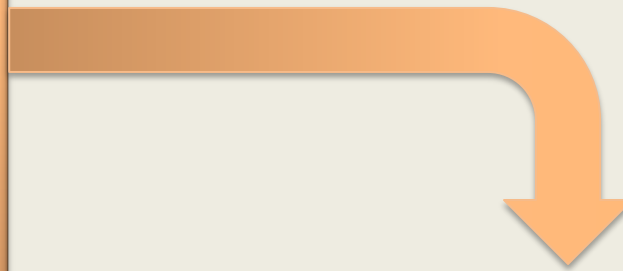
# The University Consortium for Children and Families

23

Years of Partnership  
with DCFS

6

Member  
Universities



143,000

DCFS Staff Utilizing UCCF Courses Since 1991



# Title IV-E Funding

The major source of federal funding for educating and training the child welfare workforce

Requires local match of 25%

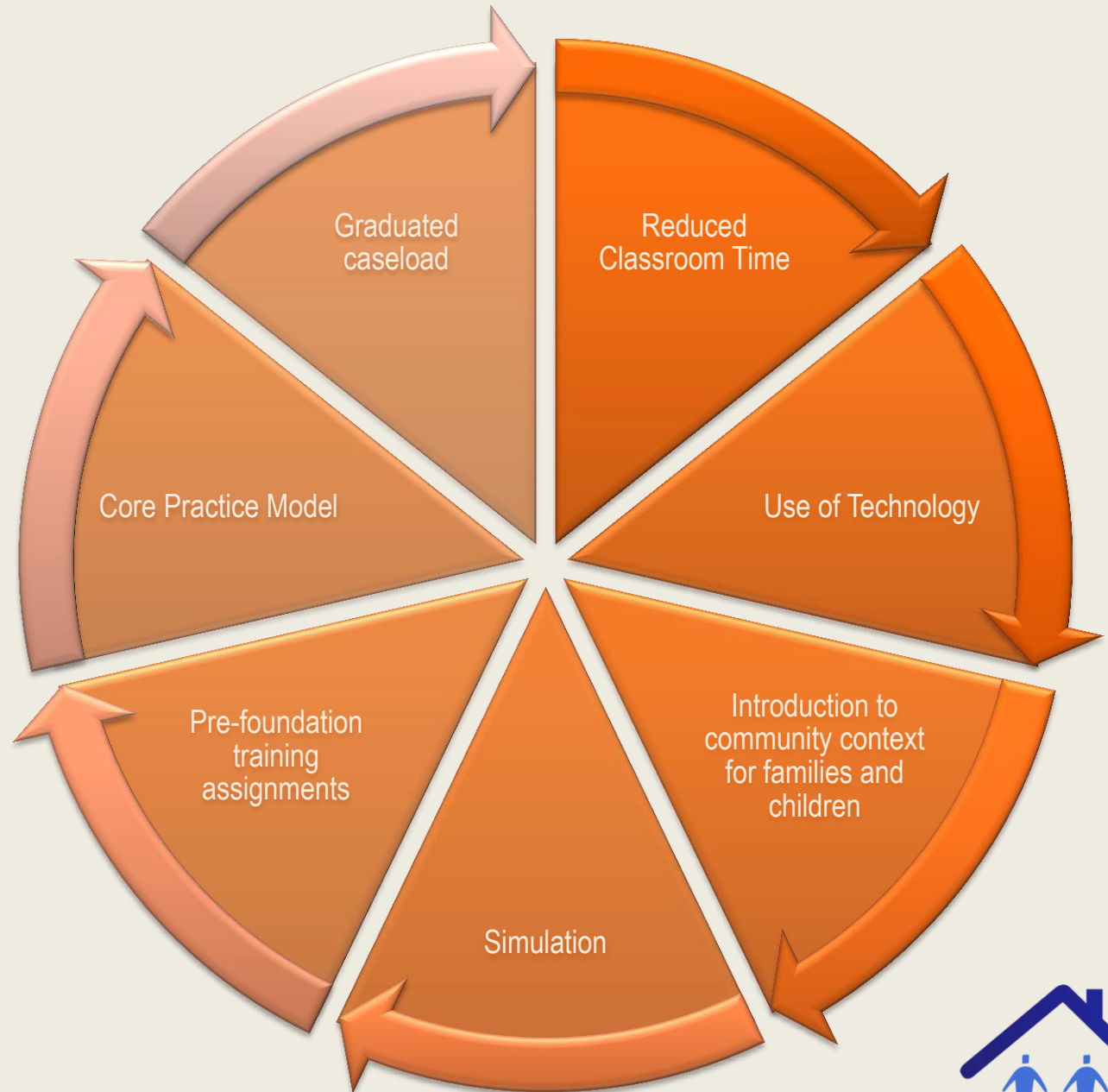
Entitlement Program

Supports internships and employee training

Designed to prevent the institutionalization of at risk children



# Change in Pedagogy



---

# Recommendations

Mandated Cross-training with close DCFS  
Partners

UCCF Training Model Implemented  
County-wide Utilizing Title IV-E  
Funding

Cross-sector Training Reflective of  
BOS Priorities

Annual Meeting with UCCF and  
Department Heads





---

**THANK YOU**

