

ZONING CASE NUMBER 2009-00009-(5)

ORDINANCE NO. 2012-0055Z

An ordinance amending Section 22.16.230 of Title 22 – Planning and Zoning of the Los Angeles County Code, changing regulations for the execution of the Santa Clarita Valley Area Plan Update (One Valley One Vision), a part of the County General Plan.

The Board of Supervisors of the County of Los Angeles ordains as follows:

SECTION 1. Section 22.16.230 of the Los Angeles County Code is amended by amending the maps of the Mount Gleason Zoned District No. 75, Castaic Canyon Zoned District No. 100, Sand Canyon Zoned District No. 106, Soledad Zoned District No. 117, Newhall Zoned District No. 118, and, Bouquet Canyon Zoned District No. 119, as shown on the Santa Clarita Valley zoning map attached hereto.

SECTION 2. The Board of Supervisors finds that this ordinance is consistent with the Santa Clarita Valley Area Plan Update and the General Plan of the County of Los Angeles.

Los Angeles County General Plan

SANTA CLARITA VALLEY AREA PLAN

- BOUQUET CANYON ZONED DISTRICT

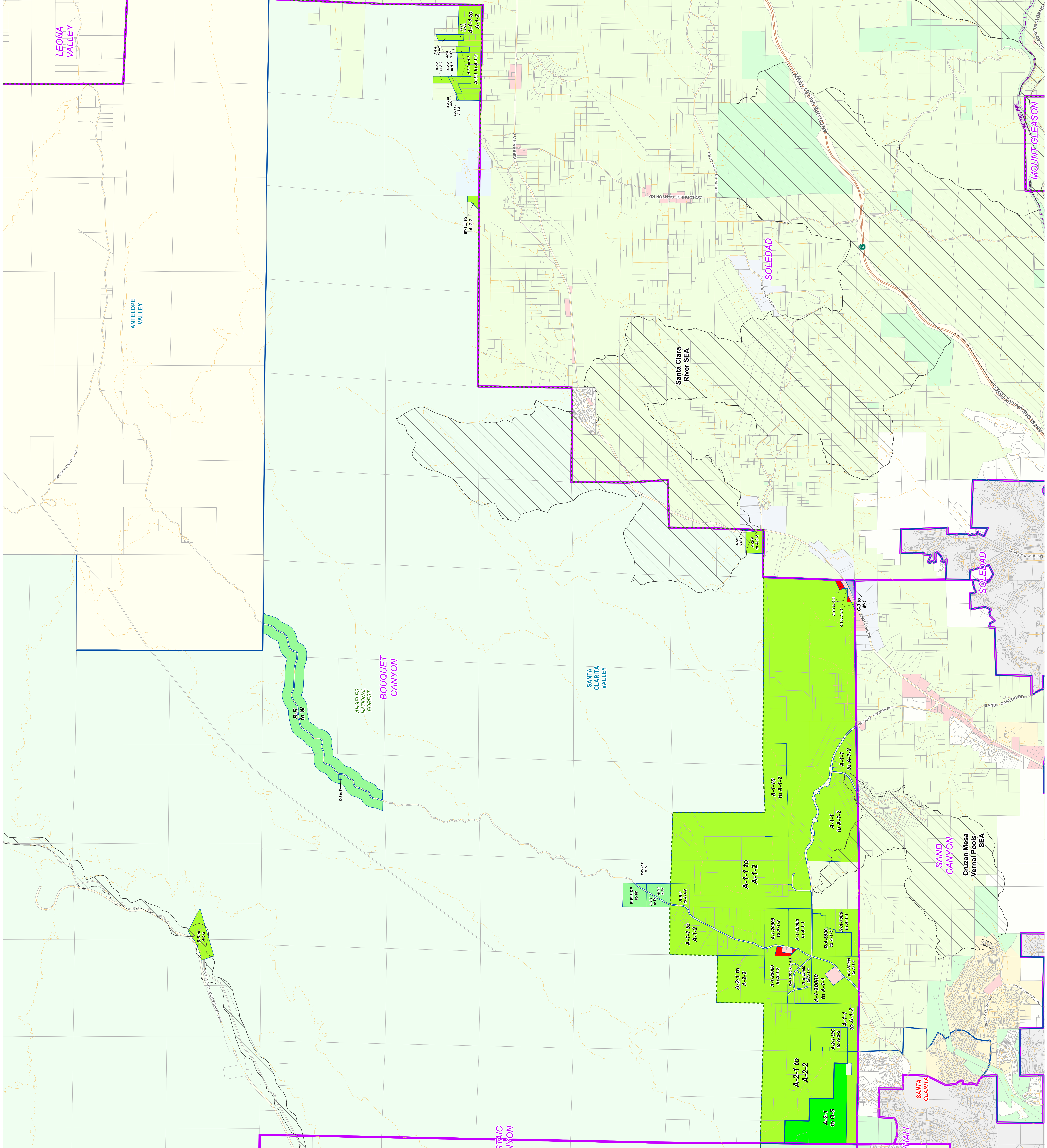
Zone Change Map

LEGEND

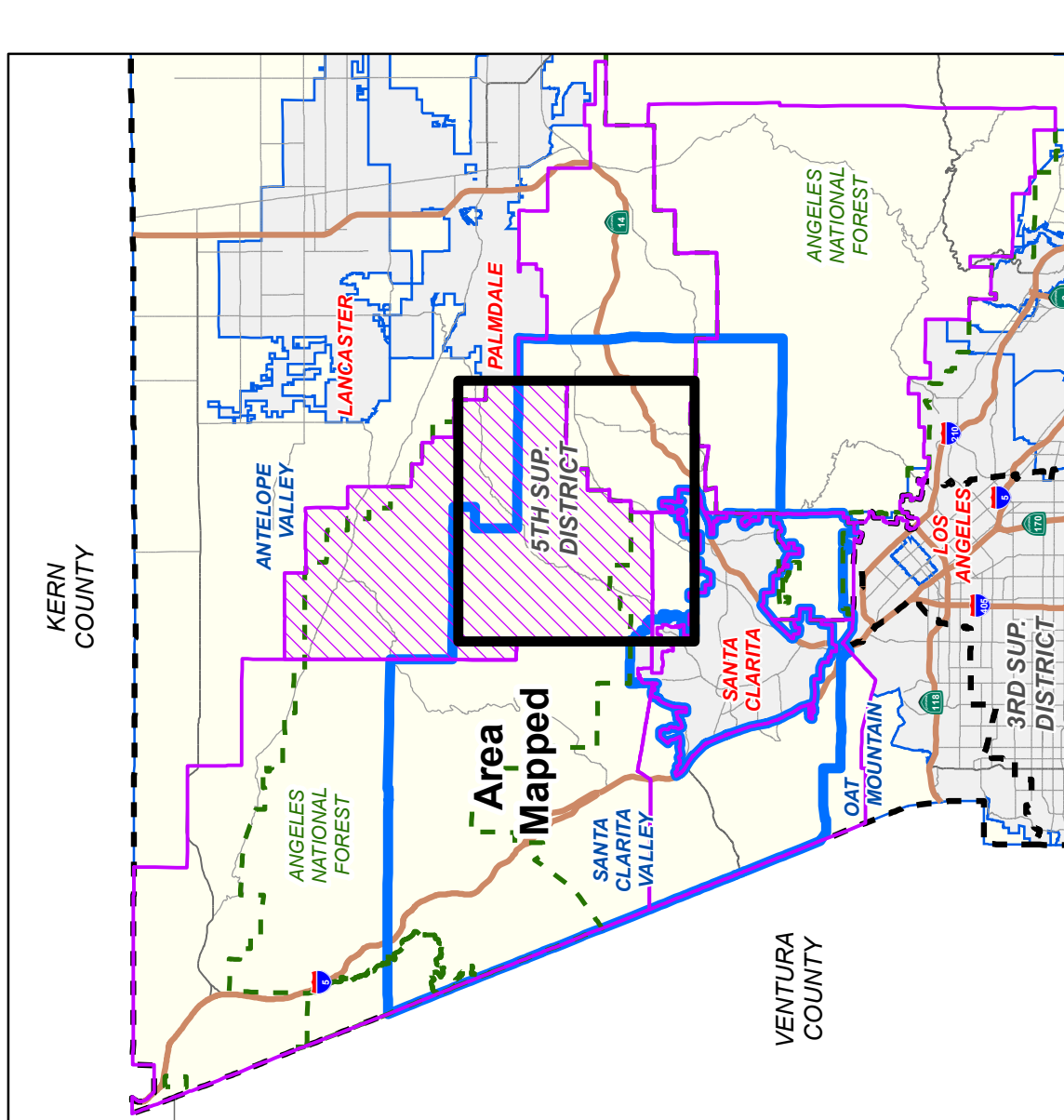
R-1 - Single-family residence	A-1 - Light agriculture	M-1 - Light manufacturing	SP - Specific Plan
R-2 - Two-family residence	A-2 - Heavy agriculture	M-2 - Heavy manufacturing	B-1 - Buffer strip
R-3 - Limited multiple residence	C-1 - Commercial highway	M-3 - Unclassified	B-2 - Corner buffer
R-4 - Limited multiple residence	C-2 - Neighborhood commercial	M-4 - Unlimited manufacturing	RR - Resort and recreation
RA - Residential agriculture	C-3 - Limited commercial	M-5 - Aircraft, heavy industrial	WR - Wetland
RPD - Residential planned development	C4 - Commercial planned development	MFD - Manufacturing industrial	PR - Restricted parking
A-1 - Light agriculture	C-R - Commercial recreation	D-2 - Medium density residential development	SRD - Scientific research and development
A-2 - Heavy agriculture	C-H - Commercial highway	IT - Institutional	O-S - Open space
C-1 - Commercial highway	C-N - Neighborhood commercial	B-1 - Buffer strip	A-C - Arts and crafts
C-2 - Neighborhood commercial	C-U - Unlimited commercial	B-2 - Corner buffer	MXD - Mixed use development
C-3 - Limited commercial	C-PD - Commercial planned development	RR - Resort and recreation	
C4 - Commercial planned development	C-R - Commercial recreation	WR - Wetland	
M-1 - Light manufacturing	M-2 - Heavy manufacturing	PR - Restricted parking	
M-2 - Heavy manufacturing	M-3 - Unclassified	SRD - Scientific research and development	
M-3 - Unclassified	M-4 - Unlimited manufacturing	O-S - Open space	
M-4 - Unlimited manufacturing	M-5 - Aircraft, heavy industrial	A-C - Arts and crafts	
MFD - Manufacturing industrial	D-2 - Medium density residential development	MXD - Mixed use development	
D-2 - Medium density residential development	IT - Institutional		
IT - Institutional	B-1 - Buffer strip		
B-1 - Buffer strip	B-2 - Corner buffer		
B-2 - Corner buffer	RR - Resort and recreation		
RR - Resort and recreation	WR - Wetland		
WR - Wetland	PR - Restricted parking		
PR - Restricted parking	SRD - Scientific research and development		
SRD - Scientific research and development	O-S - Open space		
O-S - Open space	A-C - Arts and crafts		
A-C - Arts and crafts	MXD - Mixed use development		
MXD - Mixed use development			

NOTES:
 The location of zoning boundaries is as accurate as can be portrayed at this scale. For more precise boundary locations, please contact the Land Development Department.
 Parcel boundaries are shown from the parcel database maintained by the Department of Public Works and the Assessor's Office. Boundaries shown on the map reflect the most recent update from the Assessor's Office as of February 2012.

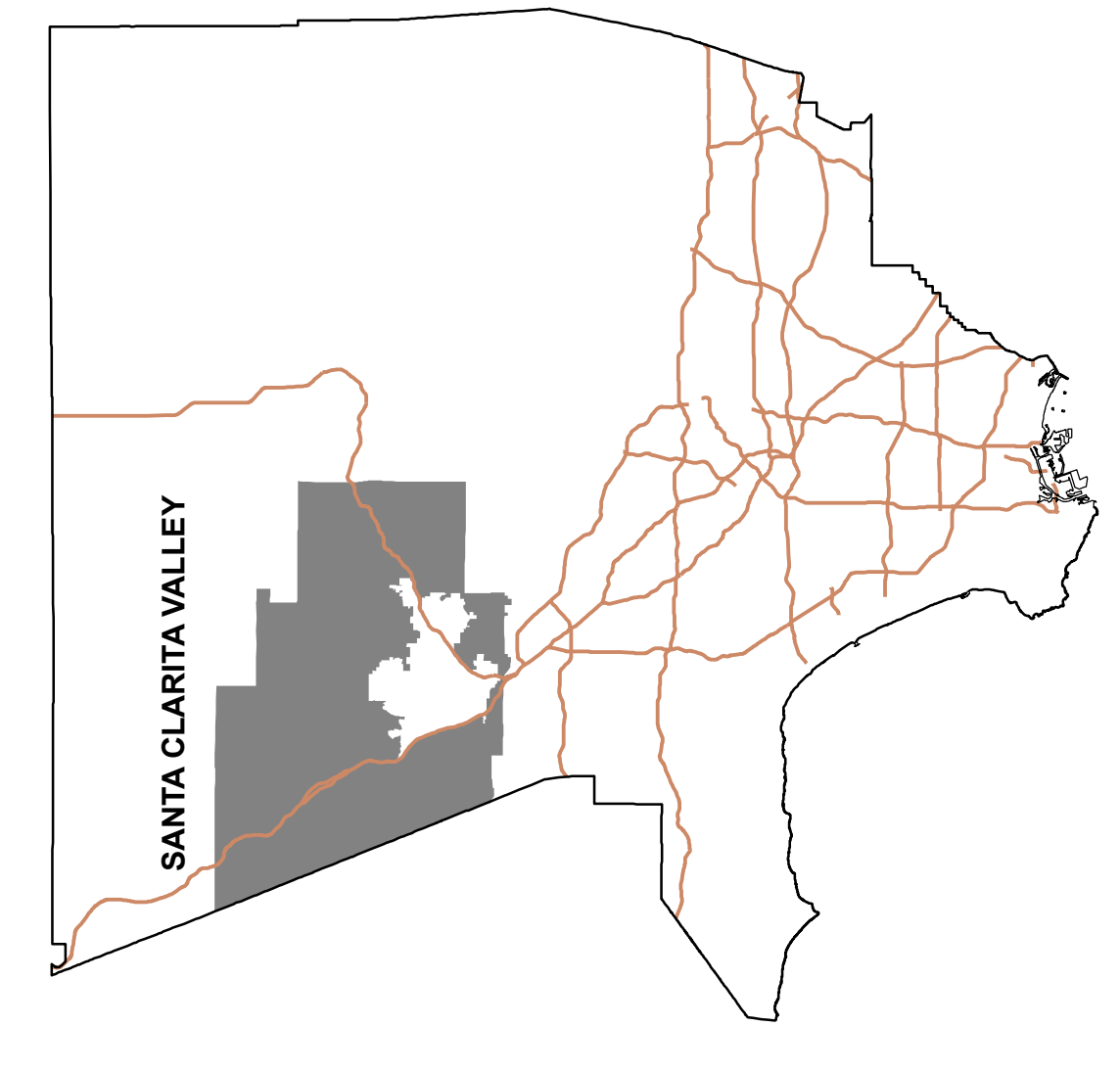
Zoning colors in legend and black text in the map refer to areas of zone change for this zoned district only. All other zoning that is NOT changing in this zoned district has a muted color scheme.



VICINITY MAP:



KEY MAP:



SECTION 3. This ordinance shall be published in The Daily Commerce a newspaper printed and published in the County of Los Angeles.



Zev Yaroslavsky
Chairman

ATTEST:

Sachi A. Hamai
Sachi A. Hamai
Executive Officer -
Clerk of the Board of Supervisors
County of Los Angeles

I hereby certify that at its meeting of November 27, 2012 the foregoing ordinance was adopted by the Board of Supervisors of said County of Los Angeles by the following vote, to wit:

<u>Ayes</u>		<u>Noes</u>	
Supervisors	<u>Gloria Molina</u>	Supervisors	<u>None</u>
	<u>Mark Ridley-Thomas</u>		
	<u>Zev Yaroslavsky</u>		
	<u>Don Knabe</u>		
	<u>Michael D. Antonovich</u>		

Effective Date: December 27, 2012
Operative Date: _____

Sachi A. Hamai
Sachi A. Hamai
Executive Officer -
Clerk of the Board of Supervisors
County of Los Angeles

I hereby certify that pursuant to Section 25103 of the Government Code, delivery of this document has been made

SACHI A. HAMAI
Executive Officer
Clerk of the Board of Supervisors

By John F. Krattli
Deputy



APPROVED AS TO FORM:
JOHN F. KRATTLI
County Counsel

By Richard D. Weiss
Richard D. Weiss
Chief Deputy County Counsel