



County of Los Angeles  
**CHIEF EXECUTIVE OFFICE**

Kenneth Hahn Hall of Administration  
500 West Temple Street, Room 713, Los Angeles, California 90012  
(213) 974-1101  
<http://ceo.lacounty.gov>

WILLIAM T FUJIOKA  
Chief Executive Officer

October 2, 2012

The Honorable Board of Supervisors  
County of Los Angeles  
383 Kenneth Hahn Hall of Administration  
500 West Temple Street  
Los Angeles, CA 90012

Dear Supervisors:

**ADOPTED**

BOARD OF SUPERVISORS  
COUNTY OF LOS ANGELES

15 October 2, 2012

*Sachi A. Hamai*  
SACHI A. HAMAI  
EXECUTIVE OFFICER

Board of Supervisors  
GLORIA MOLINA  
First District

MARK RIDLEY-THOMAS  
Second District

ZEV YAROSLAVSKY  
Third District

DON KNABE  
Fourth District

MICHAEL D. ANTONOVICH  
Fifth District

**FIVE-YEAR LEASE AGREEMENT – SHERIFF’S DEPARTMENT  
301 SOUTH CENTRAL AVENUE, LOS ANGELES  
500 EAST THIRD STREET, LOS ANGELES  
(FIRST DISTRICT) (3 VOTES)**

**SUBJECT**

This recommendation is for a five-year lease agreement for the Sheriff’s Department to occupy 3,100 square feet of office space and a 6,865 square foot parking lot.

**IT IS RECOMMENDED THAT THE BOARD:**

1. Consider the Negative Declaration, together with the fact that no comments were received during the public review process, find that the project will not have a significant effect on the environment, find that the Negative Declaration reflects the independent judgment of the County of Los Angeles to approve the Negative Declaration, find that the project will have no adverse effect on wildlife resources, and authorize the Chief Executive Office to complete and file a Certificate of Fee Exemption for the project.
2. Approve and instruct the Chairman to sign the five-year lease agreement with MP Capital, LLC (Landlord) for the occupancy of 3,100 square feet of office space located at 301 South Central Avenue, Los Angeles and a 6,865 square foot parking lot located at 500 East Third Street, Los Angeles, to be occupied by the Sheriff’s Department for a maximum first year cost of \$170,358. Rental costs are to be funded by an AB 109 State grant.

*“To Enrich Lives Through Effective And Caring Service”*

*Please Conserve Paper – This Document and Copies are Two-Sided  
Intra-County Correspondence Sent Electronically Only*

3. Authorize the Sheriff's Department or the Internal Services Department, at the direction of the Chief Executive Office, to acquire telephone, data, and low voltage systems at a cost not to exceed \$76,500.
4. Authorize the Chief Executive Office and the Sheriff's Department to implement the project. The lease will be effective upon approval by the Board and commence upon completion of the improvements by the Landlord and acceptance by the County.

### **PURPOSE/JUSTIFICATION OF RECOMMENDED ACTION**

The proposed lease will provide office space and supplemental parking for the Sheriff's Department (Sheriff) Parole Compliance Team (PCT). The PCT is a result of the recently enacted AB 109, which shifted responsibility for some parolees to County agencies.

The proposed lease will allow the Sheriff's PCT staff to conduct address verifications, locate Pre-release Supervised Persons (PSP) who evade parole, and perform compliance checks of County supervised parolees. There will be no visitation by parolees to the office. Law enforcement personnel, including Deputy Probation Officers and local agencies, will visit the facility to attend briefings, meetings, and assist with coordination efforts for large-scale operations.

### **Implementation of Strategic Plan Goals**

The Countywide Strategic Plan Goals of Operational Effectiveness (Goal 1) and Integrated Services Delivery (Goal 3) direct that we provide service excellence and focus on the protection of life and property. The proposed lease is consistent with these goals by providing suitable office space that enables staff to deliver quality services while meeting the goals of meeting AB 109 service requirements of monitoring the activities of this new population entering our communities from State prison. The lease is in conformance with Asset Management Principles as outlined in Attachment A.

### **FISCAL IMPACT/FINANCING**

The maximum first year rental costs for the facility and supplemental parking lot funded by an AB 109 State grant will be approximately \$170,358. This cost includes the annual office base rent, the maximum annual reimbursement of the Tenant Improvement (TI) and Change Order allowances if the entire amount is expended, and additional parking.

<b>PROPOSED LEASE</b>	<b>301 SOUTH CENTRAL AVENUE, LOS ANGELES 500 EAST THIRD STREET, LOS ANGELES (PARKING)</b>
Office Area	3,100 square feet (sq. ft.)
Term	Five years, commencing upon completion of the TI's
Annual Office Base Rent	\$ 81,840 (\$26.40 per sq. ft. annually)
Base TI allowance	\$ 46,500 (\$15.00 per sq. ft. included in the Base Rent)
Additional TI allowance	\$217,000 <sup>(1)</sup> (\$70.00 per sq. ft. annually)
Change Order allowance	\$ 40,000 <sup>(1)</sup>
Annual TI Reimbursable	\$ 62,118 <sup>(1)</sup> (\$20.04 per sq. ft.)
Maximum Annual Office Rent	\$143,958 <sup>(2)</sup> (\$46.44 per sq. ft. annually)
Cancellation	After the 40 <sup>th</sup> month, with 60 days prior notice
Parking (included in Rent)	5 parking spaces
Supplemental Parking Lot	6,865 sq. ft. (26 parking spaces)
Annual Supplemental Parking Rent	\$ 26,400 (\$2,200 per month, fixed for the term)
Maximum Total Annual Rent	\$170,358 (office plus supplemental parking)
Option to Renew	Two five-year options
Rental Adjustment	None; fixed for the term

<sup>(1)</sup> \$257,000 represents the maximum amount of reimbursable TI and Change Order funds available for this project. If this entire amount is expended and amortized over 60 months at the proposed rate of 8 percent, the annual TI reimbursement will be \$62,118 (\$20.04 per sq. ft. annually).

<sup>(2)</sup> Includes annual base rent, and the annual reimbursement of the TI and Change Order allowances.

Sufficient funding for the rental costs of the proposed lease is included in the Fiscal Year (FY) 2012-13 Rent Expense budget and will be billed back to the department. The Sheriff has sufficient funding in its FY 2012-13 operating budget to cover the projected lease costs which are funded by an AB 109 State grant.

**FACTS AND PROVISIONS/LEGAL REQUIREMENTS**

The proposed lease will serve as office space and supplemental parking for the Sheriff's AB 109 Parole Compliance Team's Downtown operation. The proposed five-year lease will provide 3,100 rentable square feet of office space with five parking spaces, and a 6,865 square foot supplemental parking lot containing 26 parking spaces. The agreement includes the following provisions:

- A five-year term commencing upon completion of the improvements by the Landlord, and acceptance by the County.

- A modified-gross basis whereby the Landlord is responsible for the maintenance and operational costs associated with the premises, and the County is responsible for utilities.
- A TI allowance of \$46,500, or \$15 per square foot, included in the base rental rate for improvement of the facility.
- A reimbursable TI allowance of \$217,000 and a Change Order allowance of \$40,000 are included in the proposed lease, and are payable in a lump sum or amortized over the five-year term at an annual interest rate of 8 percent.
- There is a cancellation provision allowing the County to cancel the lease at anytime after 40 months with 60 days prior written notice and payment of a cancellation fee equal to the unamortized balance of the TI costs.
- Furniture will be purchased through the lease as part of the TI allowance or by the department through a County Agreement Vendor.
- Two five-year options to renew the lease with 90 days prior written notice.
- Rent for both office and parking is fixed for the term of the lease.
- A supplemental parking lot located next to the proposed office at 500 East Third Street to accommodate 26 additional parking spaces approved for the program, at \$2,200 per month, fixed for the term of the lease.

The Chief Executive Office (CEO), Real Estate staff conducted a survey within the project area to determine the availability of comparable, equally accessible, and more economical sites. Staff was unable to identify any other sites in the survey area that could suitably accommodate this requirement. Based upon said survey, staff has established that the rental range for similar space is between \$24 and \$35 per square foot per year on a modified-gross basis, excluding parking. Thus, the annual base rent of \$26.40 modified-gross, including some parking, represents a rate within market range for the area. Attachment B shows County-owned or leased facilities within the service area. There are no suitable County-owned or leased facilities available for the program.

The Department of Public Works has inspected the facility and found it seismically suitable for County occupancy. Construction of the TIs will be completed in compliance with the Americans with Disabilities Act (ADA) and local building codes. Additionally, the Landlord will ensure ADA path of travel requirements are met.

**NEGATIVE DECLARATION/ENVIRONMENTAL IMPACT REPORT**

The CEO has made an initial study of the environmental factors and has concluded that this project will have no significant impact on the environment and no adverse effect on the wildlife resources. Accordingly, a Negative Declaration has been prepared and a notice posted at the site as required by the California Environmental Quality Act and the California Administrative Code, Section 15072 (Attachment C). No comments to the Negative Declaration were received. A fee must be paid to the State Department of Fish and Game when certain notices are filed with the Registrar-Recorder/County Clerk. The County is exempt from paying this fee when the Board finds that a project will have no impact on wildlife resources.

**IMPACT ON CURRENT SERVICES (OR PROJECTS)**

The proposed lease will provide the necessary office space and supplemental parking for this County requirement and the Sheriff concurs with the proposed lease recommendation.

**CONCLUSION**

It is requested that the Executive Officer, Board of Supervisors return four originals of the executed lease, two certified copies of the Minute Order, and the adopted, stamped Board letter to the CEO, Real Estate Division at 222 South Hill Street, 4<sup>th</sup> Floor, Los Angeles, CA 90012 for further processing.

Respectfully submitted,



WILLIAM T FUJIOKA  
Chief Executive Officer

WTF:RLR:CMM  
CEM:MAC:ls

Attachments

- c: Executive Office, Board of Supervisors
- County Counsel
- Auditor-Controller
- Internal Services
- Sheriff

**SHERIFF DEPARTMENT  
301 SOUTH CENTRAL AVENUE, LOS ANGELES  
Asset Management Principles Compliance Form<sup>1</sup>**

1. <u>Occupancy</u>		Yes	No	N/A
A	Does lease consolidate administrative functions? <sup>2</sup>			X
B	Does lease co-locate with other functions to better serve clients? <sup>2</sup>			X
C	Does this lease centralize business support functions? <sup>2</sup>			X
D	Does this lease meet the guideline of 200 sq. ft of space per person? <sup>2</sup> <b>No, given the nature of the program staff share workstations using approximately 148 sq. ft of space per person.</b>		X	
2. <u>Capital</u>				
A	Is it a substantial net County cost (NCC) program? <b>No, the rental costs are funded by an AB 109 State grant.</b>		X	
B	Is this a long term County program?	X		
C	If yes to 2 A or B; is it a capital lease or an operating license with an option to buy?		X	
D	If no, are there any suitable County-owned facilities available?		X	
E	If yes, why is lease being recommended over occupancy in County-owned space?			X
F	Is Building Description Report attached as Attachment B?	X		
G	Was build-to-suit or capital project considered? <b>Space requirement does not meet criteria for this type of project.</b>		X	
3. <u>Portfolio Management</u>				
A	Did department utilize CEO Space Request Evaluation (SRE)?	X		
B	Was the space need justified?	X		
C	If a renewal lease, was co-location with other County departments considered?			X
D	Why was this program not co-located?			
	1. ___ The program clientele requires a "stand alone" facility.			
	2. <u>X</u> No suitable County occupied properties in project area.			
	3. <u>X</u> No County-owned facilities available for the project.			
	4. ___ Could not get City clearance or approval.			
	5. <u>X</u> The Program is being co-located. This program is co-locating within a facility currently occupied by Probation for its DRC and AB 109 Supervised Persons programs.	X		
E	Is lease a full service license? <sup>2</sup> <b>Landlord will not accept a full-service lease. County to pay for electricity/utility costs.</b>		X	
F	Has growth projection been considered in space request?			X
G	Has the Dept. of Public Works completed seismic review/approval?	X		
	<sup>1</sup> As approved by the Board of Supervisors			X
	<sup>2</sup> If not, why not?			

**SHERIFF DEPARTMENT  
OFFICE SPACE SEARCH  
WITHIN DOWNTOWN LOS ANGELES**

LACO FACILITY NAME	ADDRESS	SQUARE GROSS	FEET NET	OWNERSHIP	SQUARE FEET AVAILABLE
				STATE OF CA AND COUNTY LA (PARTIAL)	NONE
5805 MENTAL HEALTH COURTHOUSE	1150 N SAN FERNANDO RD, LOS ANGELES 90065	28523	20734		NONE
C760 DPSS-EAST L A GROW EMPLOYMENT SERVICES CENTER	2200 N HUMBOLDT ST, LOS ANGELES 90031	23655	17554	LEASED	NONE
C269 DPSS-LINCOLN HEIGHTS WS DISTRICT OFFICE	4077 N MISSION RD, LOS ANGELES 90032	26000	18575	OWNED	NONE
A336 SHERIFF-WILSHIRE CENTRE BUILDING	3055 WILSHIRE BLVD, LOS ANGELES 90010	7755	7115	LEASED	NONE
A369 DCFS-HEADQUARTERS ANNEX	501 SHATTO PL, LOS ANGELES 90020	17751	15976	LEASED	NONE
A413 HUMAN RESOURCES-WILSHIRE SQUARE TWO BUILDING	3333 WILSHIRE BLVD, LOS ANGELES 90010-4109	85994	76176	LEASED	NONE
A425 DCFS-HEADQUARTERS BUILDING	425 SHATTO PL, LOS ANGELES 90020	81912	77816	LEASED	NONE
X317 DCSS-LE SAGE COMPLEX 4 STORY BUILDING	3175 W 6TH ST, LOS ANGELES 90020	52230	42341	OWNED	NONE
X532 DCSS-LE SAGE COMPLEX 1 STORY BLDG(RED-TAGGED)	532 S VERMONT AVE, LOS ANGELES 90020	27179	10314	OWNED	<b>NOT HABITABLE</b>
X550 MENTAL HEALTH-LE SAGE COMPLEX TOWER	550 S VERMONT AVE, LOS ANGELES 90020-1991	171651	149668	OWNED	NONE
Y193 PARKS & RECREATION-HEADQUARTERS BUILDING	433 S VERMONT AVE, LOS ANGELES 90020	31862	21777	OWNED	NONE
B695 HEALTH-IMMUNIZATION PRGM/ENVIRONMENTAL HEALTH	695 S VERMONT AVE, LOS ANGELES 90010	80403	75647	LEASED	NONE
A600 CENTRAL CIVIL WEST COURTHOUSE	600 S COMMONWEALTH AVE, LOS ANGELES 90005	281988	237432	LEASED	NONE
B500 DHS-WORKFORCE DEVELOPMENT PROGRAM	500 S VIRGIL AVE, LOS ANGELES 90020	8000	7200	PERMIT	NONE
A360 DPSS-METRO NORTH AP/ CALWORKS DISTRICT OFFICE	2601 WILSHIRE BLVD, LOS ANGELES 90057	62000	60140	LEASED	NONE
6518 THE ADAMS & GRAND BUILDING	2615 S GRAND AVE, LOS ANGELES 90007	215439	183874	OWNED	NONE
T050 DHS-CLAUDE HUDSON COMPREHEN HEALTH CTR CLINIC	2901 S HOPE ST, LOS ANGELES 90007	2400	2160	OWNED	NONE
Y338 DHS-H CLAUDE HUDSON COMPREHENSIVE HEALTH CTR	2829 S GRAND AVE, LOS ANGELES 90007	82740	41831	OWNED	NONE
Y132 SHERIFF-SCIENTIFIC SERVICES BUREAU LABORATORY	2020 W BEVERLY BLVD, LOS ANGELES 90057	34511	24105	OWNED	NONE
A405 BOS/ARTS COMMISSION-WILSHIRE-BIXEL BUILDING	1055 WILSHIRE BLVD SUITE 800, LOS ANGELES 90017	7873	7479	LEASED	NONE
				STATE OF CA AND COUNTY LA (PARTIAL)	NONE
5267 METROPOLITAN COURTHOUSE-VEHICAL INSPECTION	1997 S HILL ST, LOS ANGELES 90007	9654	8435		NONE
A675 DA-METRO COURT/DCFS METRO NORTH/ERCP/CALL CTR	1933 S BROADWAY, LOS ANGELES 90007	148483	141059	LEASED	NONE
A216 DPSS-APPEALS & STATE HEARINGS	811 WILSHIRE BLVD, LOS ANGELES 90017	4512	4286	LEASED	NONE
0181 KENNETH HAHN HALL OF ADMINISTRATION	500 W TEMPLE ST, LOS ANGELES 90012-2713	2874270	1778505	OWNED	NONE
3155 PERFORMING ARTS CTR-DE LISA BLDG/THE ANNEX	301 N GRAND AVE, LOS ANGELES 90012	55164	35956	OWNED	NONE
5456 HEALTH SERVICES ADMINISTRATION BUILDING	313 N FIGUEROA ST, LOS ANGELES 90012	221359	134851	OWNED	NONE
5546 PH-CENTRAL PUBLIC HEALTH CENTER	241 N FIGUEROA ST, LOS ANGELES 90012	60924	34748	OWNED	NONE
A159 DISTRICT ATTORNEY-FIGUEROA PLAZA	201 N FIGUEROA ST, LOS ANGELES 90012	87810	83420	LEASED	NONE
A442 MENTAL HEALTH-LAPD - SMART TEAM OFFICE	419 S SPRING ST, LOS ANGELES 90013	1000	1000	GRATIS USE	NONE
A627 COUNTY ADMIN OFFICES-LA WORLD TRADE CTR	350 S FIGUEROA ST, LOS ANGELES 90071	52516	49890	LEASED	NONE
A632 PUBLIC DEFENDER-PIAS ET. AL.	312 S HILL ST, LOS ANGELES 90012-3503	9782	9293	LEASED	NONE
0156 HALL OF RECORDS	320 W TEMPLE ST, LOS ANGELES 90012	876190	521552	OWNED	NONE
				STATE OF CA AND COUNTY LA (PARTIAL)	NONE
3154 CLARA SHORTRIDGE FOLTZ CRIMINAL JUSTICE CENTR	210 W TEMPLE ST, LOS ANGELES 90012	1036283	516275		NONE
A218 MENTAL HEALTH-SKID ROW MANAGEMENT TEAM	420 S SAN PEDRO ST, LOS ANGELES 90013	3516	3340	LEASED	NONE
B426 DMH-ADULT SYSTEMS OF CARE-FSP	426 S SAN PEDRO ST, LOS ANGELES 90013	6500	6175	LEASED	NONE
B446 DHS-SKID ROW CLINIC	512 S SAN PEDRO ST, LOS ANGELES 90013	20628	19597	LEASED	NONE
B447 DMH-PROJECT 50 (OFFICE ONLY)	521 S SAN PEDRO ST, LOS ANGELES 90013	2540	2413	LEASED	NONE
Y013 DPSS-CIVIC CENTER DISTRICT/GROW CENTER OFFICE	813 E 4TH PL, LOS ANGELES 90013	39956	25158	OWNED	NONE
5979 CENTRAL ARRAIGNMENT COURTHOUSE	429 BAUCHET ST, LOS ANGELES 90012	83692	46440	OWNED	NONE
5260 CORONER-ADMINISTRATION / INVESTIGATIONS BLDG	1102 N MISSION RD, LOS ANGELES 90033	22479	14251	OWNED	NONE
0837 MED CTR-PERSONNEL OFFICE BUILDING	1200 N STATE ST, LOS ANGELES 90033	2980	1761	OWNED	NONE
0838 MED CTR-QUALITY ASSURANCE UTILIZATION REVIEW	1200 N STATE ST, LOS ANGELES 90033	2980	2341	OWNED	NONE
5699 MED CTR-CHAPLAIN'S CENTER	1200 N STATE ST, LOS ANGELES 90033	1940	1454	OWNED	NONE
T226 MED CTR-LOCAL WORKER HIRING PROGRAM BLDG 304	1200 N STATE ST, LOS ANGELES 90033	1440	1200	PERMIT	NONE
T541 MED CTR-HOME CARE TRAILER T-4	1200 N STATE ST, LOS ANGELES 90033	1376	1223	OWNED	NONE
T542 MED CTR-PATIENT FINANCIAL SERVICES T-5	1200 N STATE ST, LOS ANGELES 90033	10512	7872	OWNED	NONE
T544 MED CTR-QUALITY ASSURANCE/UTILIZATION REVIEW	1200 N STATE ST, LOS ANGELES 90033	4334	3629	OWNED	NONE
T546 MED CTR-PATIENT FINANCIAL SRVICES OFFICE T-16	1240 N MISSION RD, LOS ANGELES 90033	5190	4095	OWNED	NONE
T547 MED CTR-PATIENT FINANCIAL SERVICES T-15	1240 N MISSION RD, LOS ANGELES 90033	2588	1967	OWNED	NONE
T555 MED CTR-PATIENT FINANCIAL SERVICES T-17	1200 N STATE ST, LOS ANGELES 90033	4661	3482	OWNED	NONE
T556 MED CTR-PATIENT FINANCIAL SERVICES TRAILER	1200 N STATE ST, LOS ANGELES 90033	2973	2461	OWNED	NONE
T620 MED CTR-EMERGENCY MEDICAL SVCS TRAILER T-18	1200 N STATE ST, LOS ANGELES 90033	1200	1049	OWNED	NONE
3374 PW CENTRAL YARD-SURVEY OFFICE (CLOSED)	1525 ALCAZAR ST, LOS ANGELES 90033	2219	1616	OWNED	<b>1616</b>
4799 PW CENTRAL YARD-DIVISION ADMINISTRATION	1525 ALCAZAR ST, LOS ANGELES 90033	10438	7224	OWNED	NONE
4946 MED CTR-INTERNS & RESIDENTS BUILDING	2020 ZONAL AVE, LOS ANGELES 90033	142448	79494	OWNED	NONE

# FILED

MAR 27 2012

DEAN C. LOGAN  
REGISTRAR-RECORDER/COUNTY CLERK  
*A. Rubalcava*  
A. RUBALCAVA DEPUTY

COUNTY OF LOS ANGELES  
CHIEF EXECUTIVE OFFICE

FIVE-YEAR LEASE

NEGATIVE DECLARATION

I. Location and Description of the Project

The proposed project is for the County of Los Angeles to lease facilities at 307 South Central Avenue, Los Angeles, which will be used by the Sheriff Department for office space. The facility, located in the First Supervisorial District approximately 1 mile from the Los Angeles Civic Center, includes approximately 3,100 square feet of commercial space for County use within an approximately 7,300 square foot building. The Sheriff Department shall have use of approximately 31 onsite parking spaces for departmental staff. The Landlord has no expansion plans beyond the scope of this project.

II. Finding of No Significant Effect

Based on the attached initial study, it has been determined that the project will not have a significant effect on the environment.

III. Mitigation Measures

None required.

THIS NOTICE WAS POSTED  
ON MAR 28 2012  
UNTIL APR 27 2012  
REGISTRAR-RECORDER/COUNTY CLERK

12 0044950



## INITIAL STUDY

### I. Location and Description of Project

These proposed leased premises are located at 307 South Central Avenue, Los Angeles, located in the First Supervisorial District approximately 1 mile east of the Los Angeles Civic Center (see attached map).

The building to be used is owned by MP Capital LLC, and is intended for use as office space. Located at the site are approximately 31 exclusive off-street parking spaces for the Sheriff Department use located within the parking lot for the complex and street parking is available for use by the public if necessary.

This project consists of leasing this facility for five years in which will be located an Sheriff Department office. It is anticipated that an average of 21 employees will be occupying the premises with the maximum employee occupancy anticipated to be approximately 21 per day. The public will not be allowed to enter this facility. No expansion of existing premises will occur for this project and no exterior alterations, except for interior tenant improvements and furnishings, will be performed for this project.

### II. Compatibility with General Plan

This project site is currently designated as Regional Center Commercial in the City of Los Angeles General Plan and zoned M2-2D-O. The proposed project would be consistent with these designations.

### III. Environmental Setting

The project site is located in an area of commercial type facilities. The site includes approximately 7,300 square feet of developed property. The site is located on South Central Avenue.

### IV. Identification of Environmental Effects

- A. The impact of the proposed project on existing land forms will be negligible as no reshaping of the soil nor excavation nor foundations, utility lines, sewer lines or water lines is anticipated.
- B. The project will not conflict with adopted environmental plans and goals of the City of Los Angeles.
- C. The project will not have a substantial demonstrable negative aesthetic effect on the site. The existing facility will be continued to be maintained as part of the lease arrangement.

- D. No rare or endangered species of animal or plant or the habitat of the species will be affected by the project. Nor will it interfere substantially with the movement of any resident fish or wildlife species or migratory fish or wildlife species.
- E. The project will not breach published national, state or local standards relating to solid waste or litter control.
- F. Development will not substantially degrade water quality, contaminate water supply, substantially degrade or deplete ground water resources, or interfere substantially with ground water recharge.
- G. There are no known archeological sites existing at the project site.
- H. The proposed project will not induce substantial growth or concentration of population.
- I. The project will not cause a substantial increase to existing traffic. Nor will it affect the carrying capacity of the present street system. This is a government use of private property for legal services purposes. The County's use is in conformance with uses approved by the County.
- J. The project will not displace any persons from the site.
- K. The project will not substantially increase the ambient noise levels to adjoining areas. Noise generated by the proposed County use does not exceed that previously experienced in the area when occupied by private tenants.
- L. The proposed developed project will not cause flooding, erosion or siltation.
- M. The project will not expose people or structures to major geologic hazards.
- N. The project is will not expend a sewer trunk line. All necessary utilities are available currently to the facility.
- O. No significant increased energy consumption is anticipated by the County's use of the premises as compared to previous uses.
- P. The project will not disrupt or divide the physical arrangement of established community; nor will it conflict with established recreational, educational, religious or scientific uses of the area.
- Q. No public health or safety hazard or potential public health or safety

hazard will be created by this project.

- R. The project will not violate any ambient air quality standard, contribute substantially to an existing or projected air quality violation, or expose sensitive receptors to substantial pollutant concentrations.

V. Discussions of Ways to Mitigate Significant Effects

The proposed project is not expected to create any significant effects on the environment. To mitigate any effects upon the surrounding community the following measures will be implemented:

- A. None Required.

VI. Initial Study Preparation

This study was prepared by Miguel Covarrubias of the Los Angeles County Chief Executive Office, Real Estate Division. This study was completed on March 27, 2012.

**NEGATIVE DECLARATION**

Department Name: Sheriff  
Project: Parole Compliance Team

Pursuant to Section 15072, California Environmental Quality Act and California Administrative Code Title 14, Division 6

1. Description of Project

The leasing of existing office space in an existing commercial building to be used by the County of Los Angeles, Sheriff Department as office space.

2. a. Location of Project (plot plan attached)

307 South Central Avenue  
Los Angeles, CA 90013

b. Name of Project Proponent

County of Los Angeles  
Chief Executive Office  
222 South Hill Street, 3<sup>rd</sup> Floor  
Los Angeles, CA 900112

3. Finding for Negative Declaration

It has been determined that this project will not have a significant effect on the environment based on information shown in the attached Environmental Information Form dated March 27, 2012 which constitutes the Initial Study of this project.

4. Initial Study

An Initial Study leading to this Negative Declaration has been prepared by the Chief Executive Office and is attached hereto.

5. Mitigation Measures Included in Project

None required.

Date  
March 27, 2012

Real Property Agent  
Miguel Covarrubias

Telephone  
(213) 974-4164

12 : 0044950

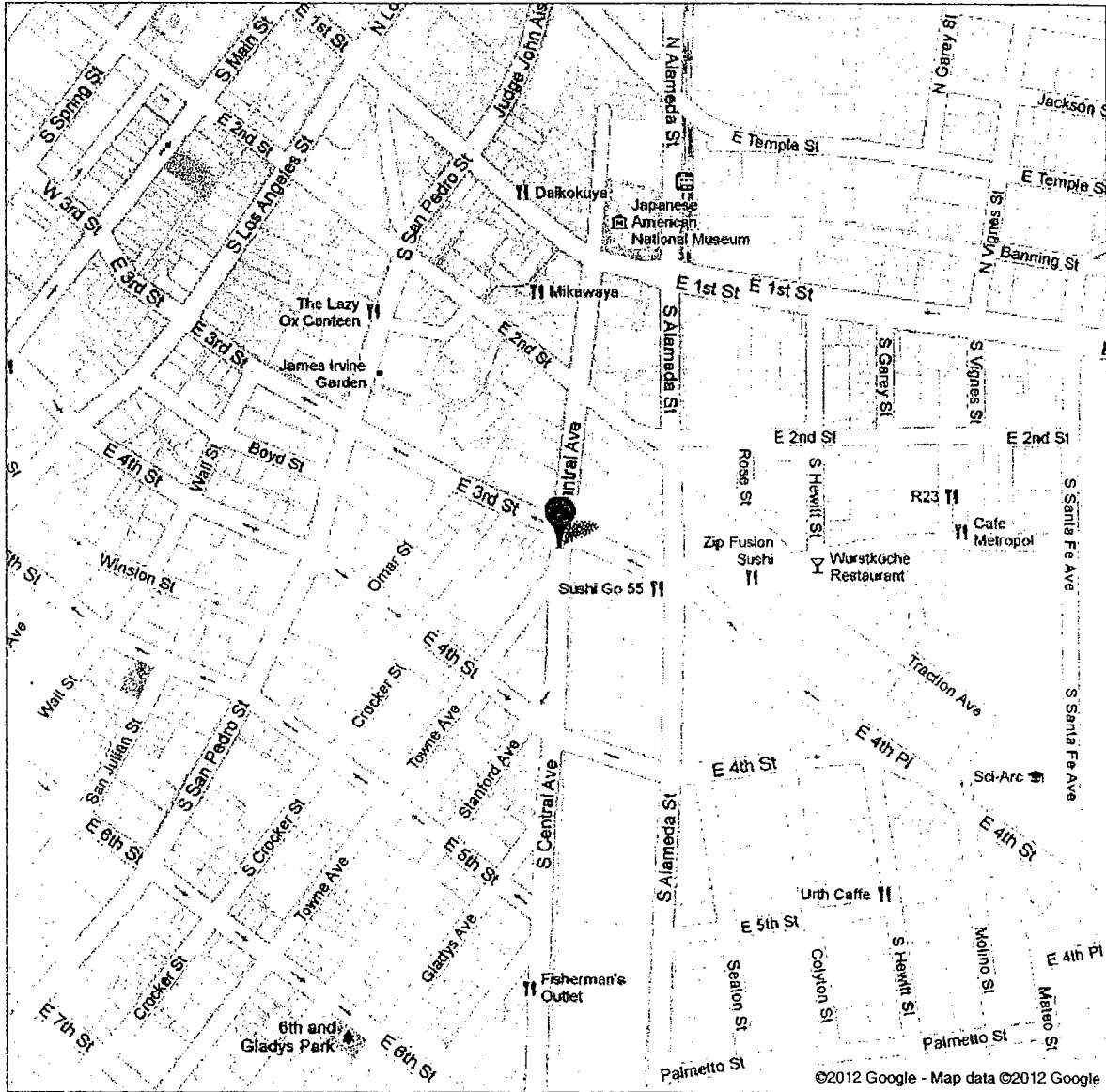


Address 307 S Central Ave  
Los Angeles, CA 90013

Get Google Maps on your phone



Text the word "GMAPS" to 466453



©2012 Google - Map data ©2012 Google

12 0044950

**DATE POSTED – March 27, 2012**

**NOTICE OF PREPARATION OF NEGATIVE DECLARATION**

This notice is provided as required by the California Environmental quality Act and California Administrative Code Title 14 Division 6, Section 15072 (a) (2) B.

A Negative Declaration has been prepared for this site based on an Initial Study which consists of completion and signing of an Environmental Information Form showing background information as follows:

1.     Name of Proponent - County of Los Angeles  
  Chief Executive Office
  
2.     Address/Phone No. - 222 South Hill Street, 3<sup>rd</sup> Floor  
  Los Angeles, California 90012
  

<u>Agent</u>	<u>Telephone</u>
Miguel Covarrubias	(213) 974-4164

  
3.     Date Information Form Submitted –     March 27, 2012
  
4.     Agency Requiring Information Form -     Los Angeles County  
  Chief Executive Office  
  Real Estate Division
  
5.     Name of Proposal, if Applicable -
  
6.     Address of Facility Involved –                 507 South Central Avenue  
  Los Angeles, CA 90013

Interested parties may obtain a copy of the Negative Declaration and the completed Environmental Information Form/Initial Study by contacting the Real Property Agent indicated under 2 above and referring to the proposal by name or to the facility by address.

Si necesita informacion en espanol, por favor de comunicarse con el agente designado, para asistencia en obtener una traduccion.

**COUNTY OF LOS ANGELES  
CHIEF EXECUTIVE OFFICE  
LEASE AGREEMENT**

**DEPARTMENT: SHERIFF, as Tenant**

**LANDLORD: MP Capital, LLC a California Limited Liability Company**

**301 SOUTH CENTRAL AVENUE  
500 EAST 3<sup>RD</sup> STREET  
LOS ANGELES, CA**

**TABLE OF CONTENTS**

	<b><u>Page</u></b>
1. BASIC LEASE INFORMATION .....	1
(a) <u>Landlord's Address for Notice</u> :.....	1
(b) <u>Tenant's Address for Notice</u> : .....	1
(c) <u>Premises</u> :.....	1
(d) <u>Building</u> :.....	1
(e) <u>Term</u> : .....	2
(f) <u>Projected Commencement Date</u> :.....	2
(g) <u>Commencement Date</u> : .....	2
(h) <u>Irrevocable Offer Expiration Date</u> : .....	2
(i) <u>Basic Rent</u> : .....	2
(j) <u>Early Termination Notice Date</u> : .....	2
(k) <u>Rentable Square Feet in the Premises</u> : .....	2
(l) <u>Use</u> : .....	2
(m) <u>Initial Departmental Use</u> : .....	2
(n) <u>Parking Spaces</u> : .....	2
(o) <u>Normal Working Hours</u> :.....	2
(p) <u>Asbestos Report</u> : .....	3
1.2 <u>Defined Terms Relating to Landlord's Work Letter</u> .....	3
(a) <u>Base Tenant Improvement Allowance</u> .....	3
(b) <u>Additional Tenant Improvement Allowance</u> .....	3
(c) <u>Maximum Change Order Allowance</u> .....	3
(d) <u>Additional Tenant Improvement and Change Order Amortization Rate</u> : .....	3



(e) <u>Basic Rent Reduction</u> .....	3
(f) <u>Tenant's Work Letter Representative</u> .....	3
(g) <u>Landlord's Work Letter Representative</u> .....	3
(h) <u>Landlord's Address for Work Letter Notice</u> .....	3
(i) <u>Tenant's Address for Workletter Notice</u> .....	3
1.3 <u>Exhibits to Lease:</u> .....	4
1.4 <u>Landlord's Work Letter:</u> .....	4
1.5 <u>Supplemental Lease Documents:</u> .....	4
2. PREMISES .....	4
3. COMMON AREAS .....	5
4. COMMENCEMENT AND EXPIRATION DATES .....	5
5. RENT .....	6
6. USES .....	6
7. HOLDOVER .....	6
8. COMPLIANCE WITH LAW .....	6
9. DAMAGE OR DESTRUCTION .....	6
10. REPAIRS AND MAINTENANCE .....	7
11. SERVICES AND UTILITIES .....	9
(a) <u>HVAC</u> .....	9
(b) <u>Electricity</u> .....	9
(c) <u>Elevators</u> .....	9
(d) <u>Water</u> .....	9
(e) <u>Janitorial</u> .....	9
(f) <u>Access</u> .....	9
12. LANDLORD ACCESS .....	10

13.	TENANT DEFAULT.....	10
14.	LANDLORD DEFAULT.....	10
	(a) Remedies.....	10
	(b) Waiver.....	11
	(c) Emergency.....	11
15.	ASSIGNMENT AND SUBLETTING.....	11
16.	ALTERATIONS AND ADDITIONS.....	11
17.	CONDEMNATION.....	12
18.	INDEMNIFICATION.....	13
19.	INSURANCE.....	13
20.	PARKING.....	14
21.	ENVIRONMENTAL MATTERS.....	15
22.	ESTOPPEL CERTIFICATES.....	16
23.	TENANT IMPROVEMENTS.....	16
24.	LIENS.....	16
25.	SUBORDINATION AND MORTGAGES.....	16
26.	SURRENDER OF POSSESSION.....	17
27.	SIGNAGE.....	17
28.	QUIET ENJOYMENT.....	17
29.	GENERAL.....	17
30.	AUTHORITY.....	19
31.	ACKNOWLEDGEMENT BY LANDLORD.....	19
32.	IRREVOCABLE OFFER.....	21
33.	OPTION TO EXTEND.....	21

COUNTY OF LOS ANGELES

CHIEF EXECUTIVE OFFICE

LEASE AGREEMENT

THIS LEASE is entered into as of the 2nd day of October, 2012 between MP Capital, LLC ("Landlord"), and COUNTY OF LOS ANGELES, a body politic and corporate ("Tenant" or "County").

Landlord and Tenant agree:

1. BASIC LEASE INFORMATION. The following terms as used herein shall have the meanings provided in this Section, unless otherwise specifically modified by provisions of this Lease.

1.1 Defined Terms Relating to the Lease:

- (a) Landlord's Address for Notice: MP Capital, LLC  
333 South Central Avenue, 2<sup>nd</sup> Floor  
Los Angeles, CA 90013
- (b) Tenant's Address for Notice: Board of Supervisors  
Kenneth Hahn Hall of Administration,  
Room 383  
500 West Temple Street  
Los Angeles, California 90012

With a copy to:  
Chief Executive Office  
Real Estate Division  
222 South Hill Street, 3<sup>rd</sup> Floor  
Los Angeles, California 90012  
Attention: Director of Real Estate  
Fax Number: (213) 830-0927

- (c) Premises: Approximately 3,100 rentable square feet in the Building and an approximately 6,865 square foot adjacent parking lot (defined below) as shown on Exhibit A attached hereto.
- (d) Building: The building located at 301 South Central Avenue and the adjacent supplemental parking lot located at 500 East 3<sup>rd</sup> Street, which is located upon the real property described more

77848

particularly in Exhibit B attached hereto (the "Property");

- (e) Term: Five years commencing upon Tenant's Acceptance of the Premises as defined in Section 4(a) (the "Commencement Date"); and terminating at midnight on the day before the fifth anniversary of the Commencement Date (the "Termination Date"), subject to earlier termination by Tenant as provided herein. The phrase "Term of this Lease" or "the Term hereof" as used in this Lease, or words of similar import, shall refer to the initial Term of this Lease together with any additional Extension Term for which an option has been validly exercised.
- (f) Projected Commencement Date: January 1, 2013
- (g) Commencement Date: See Section 4(a)
- (h) Irrevocable Offer Expiration Date: October 22, 2012
- (i) Basic Rent: \$9,020 per month (which is based upon a rental rate of \$2.20 per rentable square foot and \$2,200 for the adjacent supplemental parking lot (adjustable only as provided in Sections 2(b) and 5 hereof.))
- (j) Early Termination Notice Date: At or after the 40<sup>th</sup> month.
- (k) Rentable Square Feet in the Premises: 3,100 in the building and 6,865 in the adjacent parking lot
- (l) Use: General office use, supplemental parking or for any other lawful purposes not incompatible with other uses in the Building.
- (m) Initial Departmental Use: Sheriff
- (n) Parking Spaces: 5 included, plus supplemental parking lot
- (o) Normal Working Hours: 7:00 a.m. to 7:00 p.m., Monday through Friday and 9:00 a.m. to 2:00 p.m. Saturday, except New Year's Day, President's Day, Memorial

Day, Independence Day, Labor Day, Thanksgiving Day, Christmas Day (on the days such holidays are generally observed) and such other holidays as are generally recognized by the County of Los Angeles, California.

(p) Asbestos Report: A report dated \_\_N/A\_\_ prepared by \_\_\_\_\_, a licensed California Asbestos contractor.

1.2 Defined Terms Relating to Landlord's Work Letter:

- (a) Base Tenant Improvement Allowance: \$46,500
- (b) Additional Tenant Improvement Allowance: \$217,000
- (c) Maximum Change Order Allowance: \$40,000
- (d) Additional Tenant Improvement and Change Order Amortization Rate: 8 % per annum
- (e) Basic Rent Reduction: Not Applicable
- (f) Tenant's Work Letter Representative: Miguel Covarrubias and/or assigned staff person of the Chief Executive Office-Real Estate Division to act on behalf of the Tenant.
- (g) Landlord's Work Letter Representative: An assigned staff person to act on behalf of the Landlord.
- (h) Landlord's Address for Work Letter Notice: See Section 1.1(a)
- (i) Tenant's Address for Workletter Notice: Board of Supervisors  
Kenneth Hahn Hall of Administration,  
Room 383  
500 West Temple Street  
Los Angeles, California 90012

With a copy to:  
Chief Executive Office  
Real Estate Division  
222 South Hill Street, 3<sup>rd</sup> Floor

Los Angeles, California 90012  
Attention: Director of Real Estate  
Fax Number: (213) 830-0927

1.3 Exhibits to Lease:

Exhibit A - Floor Plan of Premises  
Exhibit B- Legal Description of Property  
Exhibit C - Commencement Date  
Memorandum and Confirmation of Lease  
Terms  
Exhibit D - HVAC Standards  
Exhibit E - Cleaning and Maintenance  
Schedule

1.4 Landlord's Work Letter:  
(executed concurrently with this Lease and  
made a part hereof by this reference):

Landlord's Work Letter  
Addendum A: Base Building Improvements  
Addendum B: Tenant Improvements

1.5 Supplemental Lease  
Documents: (delivered to  
Landlord and made a part hereof by this  
reference):

Document I: Subordination, Non-disturbance  
and Attornment Agreement  
Document II: Tenant Estoppel Certificate  
Document III: Community Business  
Enterprises Form  
Document IV: Memorandum of Lease  
Document V: Request for Notice

2. PREMISES.

(a) Landlord does hereby lease to Tenant, and Tenant does hereby lease from Landlord, upon the terms and conditions herein set forth, the Premises described in Section 1 and Exhibit A attached hereto.

(b) Tenant shall have the right within 90 days of approval of this Lease by the Board of Supervisors of the County of Los Angeles ("Board of Supervisors") to field-measure and verify the exact footage of the Premises and/or the Building. All measurements shall be taken in accordance with the methods of measuring rentable/usable area as described in the Standard Method for Measuring Floor Area in Office Buildings, ANSI Z65.1-1996, as promulgated by the Building Owners and Management Association ("BOMA") International except that no penthouse mechanical room space shall be included in the measurement. Should this measurement be less than the square footage stated above, Tenant shall have the right to adjust such square footage and reduce the Basic Rent in Section 1 accomplished by the mutual execution of a memorandum of understanding between the Landlord and the Tenant. Landlord acknowledges the space has been marketed at the above-indicated rental amount and in the event of subsequent physical measurements, Landlord agrees there will be no adjustment made to either the square footage or the Basic Rent in the event the measured square footage exceeds the amount represented by Landlord. Should Landlord and Tenant not agree with respect to the results of the measurement conducted pursuant to

this subsection (b) Landlord shall appoint an independent firm or person who is experienced in making such measurements whose determination with respect to which measurement is correct shall be final and binding upon the parties. Landlord and Tenant shall share equally in the fees of such firm.

3. COMMON AREAS. Tenant may use the following areas ("Common Areas") in common with Landlord and other tenants of the Building: the entrances, lobbies and other public areas of the Building, walkways, landscaped areas, driveways necessary for access to the Premises, parking areas and other common facilities designated by Landlord from time to time for common use of all tenants of the Building. Tenant shall comply with all reasonable, non-discriminatory rules and regulations regarding the use of the Common Areas established by Landlord.

4. COMMENCEMENT AND EXPIRATION DATES.

(a) Term. The term of this Lease shall commence upon the Commencement Date and terminate on the Termination Date. Within 30 days of determining the Commencement Date, Landlord and Tenant shall acknowledge in writing the Commencement Date by executing the Commencement Date Memorandum and Confirmation of Lease Terms attached as Exhibit C. The Commencement Date shall begin 30 days after Tenant's Acceptance of the Premises. The term "Tenant's Acceptance of the Premises" as used in this Lease shall mean the date upon which the Premises are Substantially Complete, Tenant has inspected the Premises and Tenant has accepted the Premises. The term "Substantially Complete" or "Substantial Completion" as used in this Lease shall mean compliance with all of the following: (1) the shell and core of the Building are complete and in compliance with all applicable laws and codes, and all of the building systems are operational to the extent necessary to service the Premises; (2) Landlord has sufficiently completed all the work required to be performed by Landlord in accordance with this Lease, including the installation of modular furniture systems, if so required (except minor punch list items which Landlord shall thereafter promptly complete), such that Tenant can conduct normal business operations from the Premises; (3) Landlord has obtained a certificate of occupancy for the Building, or a temporary certificate of occupancy for that portion of the Building that includes all of the Premises, or its equivalent; (4) Tenant has been provided with the number of parking privileges and spaces to which it is entitled under this Lease; and (5) if Landlord is responsible for the installation of telecommunication systems, then such systems shall be completely operational.

(b) Termination Right. If the Commencement Date has not occurred within 60 days from the Projected Commencement Date, subject to Tenant Delays or Force Majeure Delays as provided in Landlord's Work Letter, which has been executed concurrently herewith, Tenant may thereafter, at any time before the Commencement Date occurs, terminate this Lease effective upon the giving of written notice to Landlord and the parties shall have no further obligations to one another hereunder.

(c) Early Possession. Tenant shall be entitled to possession of the Premises not less than 30 days prior to the Commencement Date for the purpose of

installing Tenant's furniture, fixtures and equipment in the Premises. Such early occupancy shall be subject to all provisions hereof but shall not advance the Termination Date, and Tenant shall not pay Basic Rent for such early occupancy period.

(d) Early Termination. Tenant shall have the right to terminate this Lease at any time after the Early Termination Notice Date, as defined in Section 1, by giving Landlord not less than 60 days prior written notice executed by the Chief Executive Officer of Tenant. In the event of such termination, Tenant shall pay Landlord a termination fee in an amount equal to the cost of the unamortized balance of the Additional Tenant Improvement Allowance including Change Orders (as defined in the Work Letter attached hereto), if any not yet paid by Tenant pursuant to Section 6.2, 6.3, and 8 of the Landlord's Work Letter. Said termination fee shall be paid within 60 days after such termination.

5. RENT. Tenant shall pay Landlord the Basic Rent stated in Section 1 during the Term hereof within 15 days after a claim therefor for each such month has been filed by Landlord with the Auditor of the County of Los Angeles (the "County") prior to the first day of each month. Basic Rent for any partial month shall be prorated in proportion to the number of days in such month.

6. USES. The Premises are to be used only for the uses set forth in Section 1 and for no other business or purpose; however, Landlord shall not unreasonably withhold its consent to a change of use.

7. HOLDOVER. If Tenant remains in possession of the Premises or any part thereof after the expiration of the Term of this Lease, such occupancy shall be a tenancy which is terminable only upon 90 days written notice from Landlord or 30 days written notice from the Chief Executive Officer of Tenant at the last monthly Basic Rent payable under this Lease (as such Basic Rent may be adjusted from time to time in accordance with this Lease) plus all other charges payable under this Lease, and subject to all of the terms, covenants and conditions of this Lease.

8. COMPLIANCE WITH LAW. Tenant shall, at Tenant's expense, comply promptly with all applicable statutes, ordinances, rules, regulations, orders and requirements in effect during the term hereof, regulating the use, occupancy or improvement of the Premises by Tenant. Landlord, not Tenant, shall, at its sole cost, at all times cause the Premises and the Building to comply with all applicable statutes, ordinances, rules, regulations, orders and requirements in effect and binding upon Tenant or Landlord during the term hereof, including without limitation, the Americans with Disabilities Act, except to the extent such compliance is made necessary as a result of Tenant's particular use of or alterations or improvements to the Premises.

9. DAMAGE OR DESTRUCTION.

(a) Damage. In the event any portion of the Premises is damaged by fire or any other cause rendering the Premises totally or partially inaccessible or unusable and the Premises may be restored to a complete architectural unit of the same value, condition



and character that existed immediately prior to such casualty in less than 180 days, then Landlord shall promptly, at Landlord's expense, repair such damage and this Lease shall continue in full force and effect. If all or any portion of the Premises shall be made untenable by fire or other casualty, Landlord shall immediately secure the area to prevent injury to persons and/or vandalism to the improvements. Landlord shall promptly, but in any event within ten days, cause an architect or general contractor selected by Landlord to provide Landlord and Tenant with a written estimate of the amount of time required to substantially complete the repair and restoration of the Premises and make the Premises tenantable again using standard working methods. The failure to do so shall be a material default hereunder. Basic Rent shall abate to the extent that the Premises are unusable by Tenant. Tenant waives the provisions of California Civil Code Sections 1932(2) and 1933(4) with respect to any partial or total destruction of the Premises.

(b) Tenant Termination Right. In the event any portion of the Premises is damaged by fire or any other cause rendering the Premises totally or partially inaccessible or unusable and the Premises will not be restored to a complete architectural unit of the same value, condition and character that existed immediately prior to such casualty in less than 180 days for any reason, then Tenant may terminate this Lease by giving written notice within ten days after notice from Landlord specifying such time period of repair; and this Lease shall terminate and the Basic Rent shall be abated from the date the Premises became untenable. In the event that Tenant does not elect to terminate this Lease, Landlord shall promptly commence and diligently prosecute to completion the repairs to the Building or Premises.

(c) Damage In Last Year. Notwithstanding the foregoing provisions, if any material destruction to the Premises occurs during the last year of the Term, either Landlord or Tenant may terminate this Lease by giving notice to the other not more than 30 days after such destruction, in which case (a) Landlord shall have no obligation to restore the Premises, (b) Landlord may retain all insurance proceeds relating to such destruction, and (c) this Lease shall terminate as of the date which is 30 days after such written notice of termination.

(d) Default By Landlord. If Landlord is required to repair and restore the Premises as provided for in this Section and Landlord should fail to thereafter pursue said repair and restoration work with reasonable diligence to completion, Tenant may (a) declare a default hereunder or (b) perform or cause to be performed the restoration work and deduct the cost thereof plus interest thereon at ten percent (10%) per annum, from the Basic Rent next due as a charge against the Landlord.

## 10. REPAIRS AND MAINTENANCE.

(a) Landlord Representations. Landlord represents to Tenant that (i) the Premises, the Building and all Common Areas, (including electrical, heating, ventilating and air conditioning ("HVAC"), mechanical, plumbing, gas and fire/life safety systems in the Building and similar building service systems) comply with all current laws, codes, and ordinances, including use the Americans With Disabilities Act; and are in reasonable

good working order and condition; (ii) the Building and Premises comply with all covenants, conditions, restrictions and underwriter's requirements; (iii) the Premises, Building and Common Areas are free of the presence of any Hazardous Materials (as hereinafter defined); and (iv) Landlord has not received any notice from any governmental agency that the Building or the Premises are in violation of any law or regulation. Landlord represents, based upon a professional inspection of the Premises and the Building and the Asbestos Report that the Premises and the Building contain no asbestos containing materials (other than as may be reflected in the Asbestos Report). Landlord shall, prior to Tenant's occupancy, abate, at Landlord's sole cost and expense, all asbestos containing materials to the extent required by law and provide Tenant with an updated report from a licensed California Asbestos contractor to that effect.

(b) Landlord Obligations. Landlord shall keep and maintain in good repair and working order and promptly make repairs to and perform maintenance upon and replace as needed: (i) the structural elements of the Building, including without limitation, all permanent exterior and interior walls, floors and ceilings, roof, concealed plumbing, stairways, concealed electrical systems and telephone intrabuilding network cable; (ii) mechanical (including HVAC), electrical, plumbing and fire/life safety systems serving the Building; (iii) the Common Areas; (iv) exterior windows of the Building; and (v) elevators serving the Building. Landlord, at its sole cost and expense, shall also perform all maintenance and repairs to the Premises, and shall keep the Premises in good condition and repair, reasonable wear and tear excepted. Landlord's repair obligations include, without limitation, repairs to: (1) the floor covering (if such floor covering is carpeting it shall be replaced as needed but not less often than after five years of use); (2) interior partitions; (3) doors; (4) the interior side of demising walls (which shall be repainted as needed but not less often than every five years); and (5) signage.

(c) Tenant Obligations.

Without limiting Landlord's Obligations, Tenant shall, at Tenant's sole expense, be responsible for the cost of repairing any area damaged by Tenant or Tenant's agents, employees, invitees and visitors and the repair of low voltage electronic, phone and data cabling and related equipment that is installed by or for the exclusive benefit of Tenant. All repairs and replacements shall: (a) be made and performed by contractors or mechanics approved by Tenant, which consent shall not be unreasonably withheld or delayed; (b) be at least equal in quality, value and utility to the original work or installation; and (c) be in accordance with all laws.

(d) Tenant's Right to Repair. If Tenant provides written notice (or oral notice in the event of an emergency such as damage or destruction to or of any portion of the Building structure and/or the Building systems and/or anything that could cause material disruption to Tenant's business) to Landlord of an event or circumstance which requires the action of Landlord with respect to repair and/or maintenance, and Landlord fails to provide such action within a reasonable period of time, given the circumstances, after the giving of such notice, but in any event not later than five days after the giving of such notice, then Tenant may proceed to take the required action (provided, however, that no such notice shall be required in the event of an emergency which threatens life or

where there is imminent danger to property or a possibility that a failure to take immediate action could cause a material disruption in Tenant's normal and customary business activities). Tenant shall have access to the Building to the extent necessary to perform the work contemplated by this provision. If such action was required under the terms of this Lease to have been taken by Landlord and was not taken by Landlord within such period (unless such notice was not required as provided above), and Tenant took such required action, then Tenant shall be entitled to prompt reimbursement by Landlord of Tenant's reasonable costs and expenses in having taken such action plus interest thereon at ten percent (10%) per annum. If not reimbursed by Landlord within ten days, Tenant shall be entitled to deduct from Basic Rent payable by Tenant under this Lease the amount set forth in its invoice for such work. The remedies provided in this Section are in addition to the remedies provided in Section 14.

#### 11. SERVICES AND UTILITIES.

Landlord shall furnish the following services and utilities to the Premises which electricity has been separately metered by the Landlord and shall be paid for by the Tenant:

(a) Heating, Ventilation and Air Conditioning. Landlord shall furnish heating, ventilation and air conditioning ("HVAC"), during Normal Working Hours in amounts required for the use and occupancy of the Premises for normal office purposes to a standard comparable to other first-class buildings and not less than the standard set forth in Exhibit D attached hereto.

(b) Electricity. Landlord shall furnish to the Premises the amount of electric current provided for in the Working Drawings (if applicable) but in any event not less than seven watts of electric current (connected load) per square foot of Rentable Square Feet in the Premises, for power and lighting and electric current for HVAC, and Landlord shall provide the existing or new transformers or subpanels on each floor of the Premises necessary for Tenant to utilize such capacity in the Premises.

(c) Elevators. N/A

(d) Water. Landlord shall make available water for normal lavatory and potable water meeting all applicable governmental standards for drinking purposes in the Premises.

(e) Janitorial. Landlord shall provide janitorial service on five nights per week generally consistent with that furnished in comparable office buildings in the County of Los Angeles, but not less than the services set forth in the specifications set forth in Exhibit E attached hereto.

(f) Access. Landlord shall furnish to Tenant's employees and agents access to the Building, Premises and Common Areas on a seven day per week, 24 hour per day basis, subject to compliance with such reasonable security measures as shall from time to time be in effect for the Building.

12. LANDLORD ACCESS. Tenant shall permit Landlord and its agents to enter the Premises upon prior written notice for the purpose of inspecting the Premises for any reasonable purpose. If Landlord temporarily closes any portion of the Building or Premises, Basic Rent shall be prorated based upon the percentage of the Premises or Building rendered untenable and not used by Tenant. Landlord shall have the right at any and all times to enter the Premises in the event of an emergency.

13. TENANT DEFAULT.

(a) Default. The occurrence of any one or more of the following events (a "Tenant Default") shall constitute a material default and breach of this Lease by Tenant:

(i) The failure by Tenant to make any payment of Basic Rent or any other payment required to be made by Tenant hereunder (except to the extent an offset is expressly permitted hereunder), as and when due and if the failure continues for a period of ten days after written notice to Tenant;

(ii) The failure by Tenant to observe or perform any of the other covenants, conditions or provisions of this Lease, where such failure shall continue for a period of 30 days after written notice from Landlord specifying in detail the nature of the Tenant Default; provided, however, if more than 30 days are reasonably required for its cure then Tenant shall not be deemed to be in default if Tenant commences such cure within said 30-day period and thereafter diligently prosecutes such cure to completion.

(b) Termination. Tenant agrees that if a Tenant Default should occur and should not be cured within the time periods set forth above, it shall be lawful for Landlord to terminate this Lease upon the giving of written notice to Tenant. In addition thereto, Landlord shall have such other rights or remedies as may be provided by law.

(c) No Effect on Indemnity. Nothing in this Article shall be deemed to affect either Landlord or Tenant's right to indemnification under any indemnification clause or clauses set forth in this Lease.

14. LANDLORD DEFAULT.

(a) Remedies. In addition to the provisions for Landlord's default provided by Sections 9(d), 10(c) 19 and 20(b), Landlord shall be in default ("Landlord Default") in the performance of any obligation required to be performed by Landlord under this Lease if Landlord has failed to perform such obligation within five days after the giving of written notice with respect thereto by Tenant (which notice shall be, if appropriate, the same notice given under Section 10(c)) ; provided, however, that if the nature of the Landlord Default is such that the same cannot reasonably be cured within such five day period, Landlord shall not be deemed to be in Landlord Default if Landlord shall within such period commence such cure and thereafter diligently prosecute the same to completion. If the Landlord Default is of such a nature that it materially and substantially interferes with Tenant's occupancy and use of the Premises and if such Landlord Default is not cured within the foregoing cure period, then Tenant shall have

the right, at its option, with or without further notice or demand of any kind to Landlord or any other person, to any one or more of the following described remedies in addition to all other rights and remedies provided at law or in equity or elsewhere herein: (i) to remedy such default or breach and deduct the costs thereof (including but not limited to attorneys' fees) plus interest at the rate of ten (10%) per annum from the installments of Basic Rent next falling due; (ii) to pursue the remedy of specific performance; (iii) to seek money damages for loss arising from Landlord's failure to discharge its obligations under this Lease or offset such damages against Basic Rent next coming due; and/or (iv) to terminate this Lease.

(b) Waiver. Nothing herein contained shall relieve Landlord from its duty to effect the repair, replacement, correction or maintenance required to restore any affected services, or to perform any other obligations to the standard prescribed in this Lease, nor shall this Section be construed to obligate Tenant to undertake any such work.

(c) Emergency. Notwithstanding the foregoing cure period, Tenant may cure any default without notice where the failure promptly to cure such default would, in the reasonable opinion of Tenant, create or allow to persist an emergency condition or materially and adversely affect the operation of Tenant's business in the Premises.

15. ASSIGNMENT AND SUBLETTING. Tenant may assign, mortgage, encumber or otherwise transfer this Lease or sublet the whole or any part of the Premises without first obtaining Landlord's prior consent: provided, however, that no such assignment, subletting or other transfer shall relieve Tenant of any liability under this Lease unless Landlord has given its written consent thereto, which Landlord shall not unreasonably withhold if the assignee has a financial condition which is reasonably sufficient for it to be responsible for all future obligations under this Lease.

#### 16. ALTERATIONS AND ADDITIONS.

(a) Landlord Consent. Tenant shall not make any structural alterations, improvements, additions, or utility installations in or about the Premises (collectively, "Alterations") without first obtaining the written consent of Landlord, which consent shall not be unreasonably withheld, conditioned or delayed. However, Landlord's consent shall not be required for any Alteration that satisfies all of the following criteria: (1) complies with all Laws; (2) is not visible from the exterior of the Premises or Building; (3) will not materially affect the systems or structure of the Building; and (4) does not unreasonably interfere with the normal and customary business office operations of other tenants in the Building. If Landlord fails to respond in writing within 30 days of such request, Landlord shall be deemed to approve the Alterations.

(b) End of Term. Any Alterations not removed by Tenant shall become the property of Landlord and remain upon and be surrendered with the Premises at the expiration of the Term.

## 17. CONDEMNATION.

(a) Controlling Terms If during the Term, or during the period of time between the execution of this Lease and the Commencement Date, there is any taking of all or any part of the Premises or any interest in this Lease by Condemnation (as defined below), this Section shall determine the rights and obligations of Tenant and Landlord. "Condemnation" shall mean the exercise of any governmental power to take title to any portion of the Premises, whether by legal proceedings or otherwise, by a Condemnor (as defined below) or a voluntary sale or transfer by Landlord to any Condemnor, either under threat of a Condemnor's exercise of such power or while legal proceedings are pending for the exercise of such power. "Condemnor" shall mean any public or quasi-public authority, or private corporation or individual, having the power of Condemnation.

(b) Total Taking. If the Premises are totally taken by Condemnation, this Lease shall terminate on the date the Condemnor has a right to possession of the Premises (the "Date of Taking").

(c) Partial Taking. If any portion, but not all, of the Premises is taken by Condemnation, this Lease shall remain in effect, except that Tenant may elect to terminate this Lease if, in Tenant's reasonable judgment, the remaining portion of the Premises (including the space available for parking) is rendered unsuitable for Tenant's continued use of the Premises. If Tenant elects to so terminate this Lease, Tenant must exercise its right to terminate by giving notice to Landlord within 30 days after the date that the nature and the extent of the Condemnation have been determined (the "Determination Date"), which notice shall set forth the date of termination. Such termination date shall not be earlier than 30 days nor later than 90 days after Tenant has notified Landlord of its election to terminate; except that this Lease shall terminate on the Date of Taking if the Date of Taking falls on a date before the date of termination as designated by Tenant. If Tenant does not so notify Landlord within 30 days after the Determination Date, all obligations of Tenant under this Lease shall remain in effect, except that Basic Rent shall be equitably abated.

(d) Restoration. Notwithstanding the preceding paragraph, if, within 30 days after the Determination Date, Landlord notifies Tenant that Landlord at its cost will add to the remaining Premises so that the area of the Premises and the space available for parking, will be substantially the same after the Date of Taking as they were before the Date of Taking, and Landlord commences the restoration promptly and, subject to reasonable allowance for delays that are not caused by Landlord, completes it within 90 days after Landlord so notifies Tenant, this Lease shall continue in effect. All obligations of Tenant under this Lease shall remain in effect, except that Basic Rent shall be equitably abated or reduced during the period from the Date of Taking until the completion of such restoration.

(e) Award. The Award (as defined below) shall be divided between Landlord and Tenant as their respective interests may appear. "Award" shall mean all compensation, sums or anything of value awarded, paid or received on a total or partial Condemnation of the Premises.

(f) Waiver of Statute. Landlord and Tenant hereby waive the provision of California Code of Civil Procedure Section 1265.130 allowing Landlord or Tenant to petition the superior court to terminate this Lease in the event of a partial taking of the Premises.

#### 18. INDEMNIFICATION.

(a) Tenant's Indemnity. Tenant shall indemnify, defend and hold Landlord harmless from and against all loss, cost and expense, including attorneys' fees, arising from any injury or damage to any person or property, occurring in or about the Building or Premises as a result of any negligent act, omission or willful misconduct of Tenant or its employees, or arising from any breach or default under this Lease by Tenant. The foregoing provisions shall not be construed to make Tenant responsible for loss, damage, liability or expense resulting from injuries to third parties caused by the negligence or willful misconduct of Landlord, or its officers, contractors, licensees, agents, employees or invitees.

(b) Landlord's Indemnity. Landlord shall indemnify, defend and hold Tenant harmless from and against all loss, cost and expense, including attorneys' fees, arising from any injury or damage to any person or property, occurring in or about the Building or Premises as a result of any negligent act, omission or willful misconduct of Landlord, or its officers, contractors, licensees, agents, employees, guests, or visitors, or arising from any breach or default under this Lease by Landlord. The foregoing provisions shall not be construed to make Landlord responsible for loss, damage, liability or expense resulting from injuries to third parties caused by the negligence or willful misconduct of Tenant, or its officers, contractors, licensees, agents, employees or invitees.

#### 19. INSURANCE.

(a) Landlord's Insurance. During the term of this Lease, Landlord shall maintain the following insurance:

(i) Commercial property insurance which shall (1) cover damage to Landlord's property, including improvements and betterments, from perils covered by the causes-of-loss special form (ISO form CP 10 30), and include ordinance or law coverage (and coverage against acts of terrorism to the extent such coverage is reasonably available and priced at commercially reasonable rates); and (2) be written for full replacement cost of the property, with a deductible of no greater than 5% of the property value. Landlord shall carry insurance on any furniture and furnishings which will become the property of Tenant at the expiration of the Term and on all modular furniture installed in the Premises. Insurance proceeds shall be payable to Landlord and Tenant as their interests may appear and be utilized for repair and restoration of the Premises.

(ii) General liability insurance (written on ISO policy form CG 00 01 or its equivalent) with limits of not less than the following: (1) per occurrence and

general aggregate amount of \$2,000,000; (2) products/completed operations aggregate of \$2,000,000; and (3) personal and advertising injury of \$1,000,000.

(iii) Failure by Landlord to maintain the insurance required by this Section and deliver evidence thereof as required by this Lease or to use any insurance proceeds to timely repair and restore the Premises shall constitute a material breach of this Lease.

(b) Insurance Requirements. All insurance policies required to be maintained by Landlord under this Lease shall be issued by insurance companies which have a Best's Rating of "AVII" or better and which are qualified to do business in the State of California. All liability and property damage and other casualty policies of Landlord shall be written as primary policies, not contributing with, and not in excess of coverage which Tenant may carry.

(c) Certificates. Landlord shall deliver to Tenant on the Commencement Date of this Lease and thereafter at least 15 days prior to expiration of any insurance required to be carried hereunder, certificates of insurance evidencing this coverage with limits not less than those specified above. Certificates shall include the address of the Premises and must document that each party has named the other as an additional insured (or its equivalent) on its general liability and property insurance policy, and that Tenant has been named a loss payee on Landlord's commercial property insurance policy, as required. Further, all certificates shall expressly provide that no less than 30 days' prior written notice shall be given to Tenant in the event of material change to, expiration or cancellation of the coverages or policies evidenced by the certificates.

(d) Waiver of Subrogation. Landlord and Tenant each hereby waive their rights of subrogation against one another to the extent it is covered by the property insurance policies required to be carried hereunder. Landlord shall cause its insurance carriers to consent to the foregoing waiver of rights of subrogation against Tenant.

## 20. PARKING.

(a) Tenant's Rights. Tenant shall have the right to the number of exclusive reserved parking stalls set forth in Section 1 without charge onsite or within two blocks from the Premises for the Term of this Lease. Tandem parking is permitted and Tenant shall be entitled to full in/out privileges. Tenant's parking rights shall be subject to reasonable parking rules and regulations adopted by Landlord from time to time, provided that such procedures shall be uniformly applied to all tenants. Tenant acknowledges that all other parking spaces are not for the exclusive use of Tenant, rather, all such parking spaces are to be used on a non-exclusive, first-come, first-served basis by Tenant and other tenants, occupants, licensees, invitees and permittees of the Building.

(b) Remedies. Landlord acknowledges that it is a material term of this Lease that Tenant receive all of the Parking Spaces to which it is entitled under this Lease for the entire Term of this Lease and that it would be impracticable and extremely difficult to fix the actual damages for a breach of such provisions. It is therefore agreed



that if, for any reason whatsoever, a material number of the Parking Spaces required above are not available to Tenant, (in addition to the rights given to Tenant under Section 14 and Sections 9 and 17 in the event of casualty or condemnation) Tenant may (a) terminate this Lease by giving written notice of such termination to Landlord, which notice shall be effective thirty (30) days thereafter or (b) deduct from the Basic Rent thereafter accruing hereunder an amount each month equal to the Basic Rent times the percentage of Parking Spaces not so provided times 1.5 but such deduction from Basic Rent shall be not less than ten percent (10%) nor more than one hundred percent (100%).

## 21. ENVIRONMENTAL MATTERS.

(a) Hazardous Materials. Tenant shall not cause nor permit, nor allow any of Tenant's employees, agents, customers, visitors, invitees, licensees, contractors, assignees or subtenants to cause or permit, any Hazardous Materials to be brought upon, stored, manufactured, generated, blended, handled, recycled, treated, disposed or used on, under or about the Premises, the Building or the Common Areas, except for routine office and janitorial supplies in usual and customary quantities stored, used and disposed of in accordance with all applicable Environmental Laws. As used herein, "Hazardous Materials" means any chemical, substance, material, controlled substance, object, condition, waste, living organism or combination thereof, whether solid, semi solid, liquid or gaseous, which is or may be hazardous to human health or safety or to the environment due to its radioactivity, ignitability, corrosivity, reactivity, explosivity, toxicity, carcinogenicity, mutagenicity, phytotoxicity, infectiousness or other harmful or potentially harmful properties or effects, including, without limitation, molds, toxic levels of bacteria, tobacco smoke within the Premises, petroleum and petroleum products, asbestos, radon, polychlorinated biphenyls (PCBs), refrigerants (including those substances defined in the Environmental Protection Agency's "Refrigerant Recycling Rule," as amended from time to time) and all of those chemicals, substances, materials, controlled substances, objects, conditions, wastes, living organisms or combinations thereof which are now or become in the future listed, defined or regulated in any manner by any Environmental Law based upon, directly or indirectly, such properties or effects. As used herein, "Environmental Laws" means any and all federal, state or local environmental, health and/or safety-related laws, regulations, standards, decisions of courts, ordinances, rules, codes, orders, decrees, directives, guidelines, permits or permit conditions, currently existing and as amended, enacted, issued or adopted in the future which are or become applicable to Tenant, the Premises, the Building or the Common Areas.

(b) Landlord Indemnity. Landlord shall indemnify, protect, defend (by counsel acceptable to Tenant) and hold harmless Tenant from and against any and all claims, judgments, causes of action, damage, penalties, fine, taxes, costs, liabilities, losses and expenses arising at any time during or after the Term as a result (directly or indirectly) of or in connection with the presence of Hazardous Materials on, under or about the Premises, Building or Common Areas or other violation of laws relating to Hazardous Materials other than caused by Tenant. This indemnity shall include, without limitation, the cost of any required or necessary repair, cleanup or detoxification, and the preparation and implementation of any closure, monitoring or other required plans, as

such action is required by local or state laws or any governmental agency. Landlord shall promptly deliver to Tenant a copy of any notice received from any governmental agency during the Term of this Lease concerning the presence of Hazardous Materials in the Building or the Premises. Landlord's obligations pursuant to the foregoing indemnity shall survive the expiration or termination of this Lease. A default by Landlord under this Section shall constitute a material default under this Lease.

22. ESTOPPEL CERTIFICATES. Tenant shall, within 30 days after written request of Landlord, execute, acknowledge and deliver to Landlord or its designee a written statement in the form of Document II in the Supplemental Lease Documents delivered to Landlord concurrently herewith (properly completed) but shall have no other obligation to deliver any other form of estoppel certificate. It is intended that any such statement delivered pursuant to this Section may be relied upon by a prospective purchaser of Landlord's interest or holder of any mortgage upon Landlord's interest in the Premises.

23. TENANT IMPROVEMENTS. Prior to the Commencement Date, Landlord shall construct the Tenant Improvements in the manner set forth in the Landlord's Work Letter executed by Landlord and Tenant concurrently herewith.

24. LIENS. Tenant shall keep its interest in this Lease and the Premises free from any liens arising out of any work performed or materials ordered or obligations incurred by Tenant. Landlord shall keep its interest in this Lease and the Premises free from any liens which would impair the interest of Tenant hereunder and hereby indemnifies and holds Tenant harmless from any liability or loss from any such lien.

25. SUBORDINATION AND MORTGAGES .

(a) Subordination and Non-Disturbance. Tenant agrees, at Landlord's option, to subordinate this Lease to the lien of any mortgages or deeds of trust now or hereafter in force against the Building; provided, however, Tenant's obligation to subordinate this Lease is expressly conditioned upon Tenant receiving a written agreement in the form of Document I in the Supplemental Lease Documents delivered to Landlord concurrently herewith and provided further that no such subordination shall affect any option to extend the Term of this Lease, right of first offer to lease additional premises, option to purchase or right of first offer to purchase the Property which may be included herein.

(b) Existing Deeds of Trust. The beneficiary under any existing deed of trust affecting the Building shall provide a written agreement to Tenant in the form of Document I in the Supplemental Lease Documents delivered to Landlord concurrently herewith within 30 days after the execution of this Lease.

(c) Request for Notice. Landlord acknowledges that Tenant intends to record a Request for Notice with respect to any mortgages or deeds of trust affecting the Property in the form of Document V in the Supplemental Lease Documents delivered to Landlord concurrently herewith.

(d) Notice of Default. If any mortgagee or beneficiary under a deed of trust affecting the Property gives written notice of its name and address to Tenant by registered mail requesting any such notice with reference to this Section, Tenant agrees to use its best efforts (but without liability for failure to do so) to give such mortgagee a copy of any notice of default served upon Landlord hereunder which could permit Tenant to terminate this Lease and an additional ten days within which to cure such default.

26. SURRENDER OF POSSESSION. Subject to casualty, at the expiration of the Term of this Lease, whether by lapse of time or otherwise, Tenant shall promptly and peacefully surrender the Premises to Landlord in a "broom-clean" condition. Tenant may (but shall not be required to) remove, at its own expense, all fixtures, equipment and all other personal property placed or installed in or upon the Premises by Tenant, or under its authority (including any modular furniture).

27. SIGNAGE. Tenant shall be permitted to install at the Premises reasonably appropriate signs that conform with any and all applicable laws and ordinances.

28. QUIET ENJOYMENT. So long as Tenant is not in default hereunder, Tenant shall have the right to the quiet and peaceful enjoyment and possession of the Premises and the Common Areas during the Term of this Lease, subject to the terms and conditions of this Lease.

#### 29. GENERAL.

(a) Headings. Titles to Sections of this Lease are not a part of this Lease and shall have no effect upon the construction or interpretation of any part hereof.

(b) Successors and Assigns. All of the covenants, agreements, terms and conditions contained in this Lease shall inure to and be binding upon the Landlord and Tenant and their respective successors and assigns.

(c) Brokers. Landlord and Tenant each represent and warrant to each other that it has not engaged any broker, finder or other person who would be entitled to any commission or fees in respect of the negotiation, execution or delivery of this Lease other than as disclosed to the other in writing and shall indemnify and hold harmless each other against any loss, cost, liability or expense incurred by the other party as a result of any claim asserted by any such broker, finder or other person on the basis of any arrangements or agreements made or alleged to have been made in variance with this representation. Tenant shall receive from Landlord or Landlord's broker, within ten days after the execution of this Lease, an amount equal to 50% of all commissions due to Landlord's broker as a result of the execution of this Lease.

(d) Entire Agreement. This Lease (and the Landlord's Work Letter and Supplemental Lease Documents) is the final and complete expression of Landlord and Tenant relating in any manner to the leasing, use and occupancy of the Premises, to Tenant's use of the Building and other matters set forth in this Lease. No prior agreements or understanding pertaining to the same shall be valid or of any force or

effect and the covenants and agreements of this Lease shall not be altered, modified or added to except in writing signed by both Landlord and Tenant.

(e) Severability. Any provision of this Lease which shall prove to be invalid, void or illegal shall in no way affect, impair or invalidate any other provision hereof and the remaining provisions hereof shall nevertheless remain in full force and effect.

(f) Notices. All notices and communications to any party hereunder shall be in writing and shall be deemed properly given if delivered personally, sent by registered or certified mail, postage prepaid, or by a recognized overnight commercial messenger providing proof of delivery, facsimile (electronically confirmed) to Landlord's Address for Notice and Tenant's Address for Notice as set forth in Section 1. Any notice so given shall be deemed to have been given as of the date of delivery (whether accepted or refused) established by U.S. Post Office return receipt or the overnight carrier's proof of delivery, as the case may be. Any such notice not so given shall be deemed given upon receipt of the same by the party to whom the same is to be given.

(g) Governing Law and Forum. This Lease shall be governed by and construed in accordance with the internal laws of the State of California. Any litigation with respect to this Lease shall be conducted in the County of Los Angeles, State of California.

(h) Waivers. No waiver by Landlord or Tenant of any provision hereof shall be deemed a waiver of any other provision hereof or of any subsequent breach by Landlord or Tenant of the same or any other provision. Landlord's or Tenant's consent to or approval of any act shall not be deemed to render unnecessary the obtaining of Landlord's or Tenant's consent to or approval of any subsequent act by Landlord or Tenant.

(i) Time of Essence. Time is of the essence for the performance of all of the obligations specified hereunder.

(j) Consent. Whenever any consent is required by Landlord or Tenant hereunder, such consent shall not be unreasonably withheld, conditioned or delayed and, unless otherwise specifically provided herein, shall be deemed granted if not refused within ten (10) days after written request is made therefore, together with all necessary information.

(k) Community Business Enterprises.

Landlord shall complete and deliver to Tenant concurrently with the execution hereof a Community Business Enterprises form set forth as Document III in the Supplemental Lease Documents delivered to Landlord concurrently herewith.

(l) Memorandum of Lease.

If requested by Tenant, Landlord and Tenant shall execute and acknowledge a Memorandum of Lease in the form of Document IV in the Supplemental Lease Documents delivered to Landlord concurrently herewith, which Memorandum may be recorded by Tenant in the Official Records of Los Angeles County.

30. AUTHORITY. Only the Board of Supervisors has the authority, by formally approving and/or executing this Lease, to bind the County to the terms included herein. Each individual executing this Lease on behalf of Tenant represents and warrants that he or she is duly authorized to execute and deliver this Lease on behalf of Tenant, and that this Lease is binding upon Tenant in accordance with its terms. Landlord understands that no material terms of this Lease may be altered or deleted, nor may any new material terms be added to this Lease, without the express written approval of the Board of Supervisors, either through an amendment to the Lease or by other formal board action. No County officer, employee, agent or independent contractor has any authority to alter, add or delete the material terms of this Lease and Landlord may not rely upon any representations to the contrary. This limitation of authority applies to all material terms of the Lease including, without limitation, any monetary ceiling established for Tenant Improvements or other project costs of Landlord which are subject to reimbursement by County. County shall not reimburse Landlord for any expenses which exceed this ceiling. Notwithstanding the foregoing, the Chief Executive Officer of the County or its delegee (the "Chief Executive Officer") may take any administrative act on behalf of Tenant hereunder which does not have the effect of increasing Basic Rent or other financial obligations of Tenant under this Lease, including without limitation, granting any approvals, terminating this Lease in the manner provided herein by an Early Termination Notice or otherwise, signing estoppel certificates, signing the Commencement Date Memorandum and Confirmation of Lease Terms or subordinating this Lease. Each individual executing this Lease on behalf of Landlord represents and warrants that he or she is duly authorized to execute and deliver this Lease on behalf of Landlord, and that this Lease is binding upon Landlord in accordance with its terms.

31. ACKNOWLEDGEMENT BY LANDLORD

Landlord acknowledges that it is aware of the following provisions:

(a) Consideration of GAIN Program Participants. Should Landlord require additional or replacement personnel after the effective date of this Lease, Landlord shall give consideration for any such employment, openings to participants in the County Department of Public Social Services' Greater Avenues for Independence ("GAIN") Program who meet Landlord's minimum qualifications for the open position. The County will refer GAIN participants by job category to Landlord.

(b) Solicitation of Consideration. It is improper for any County officer, employee or agent to solicit consideration in any form from a landlord with the implication, suggestion or statement that the landlord's provision of the consideration may secure more favorable treatment for the landlord in the award of the Lease or that

landlord's failure to provide such consideration may negatively affect the County's consideration of the landlord's offer to lease. A landlord shall not offer or give, either directly or through an intermediary, consideration in any form to a County officer, employee or agent for the purpose of securing favorable treatment with respect to the award of the Lease.

Landlord shall immediately report any attempt by a County officer, employee or agent to solicit such improper consideration. The report shall be made either to the County manager charged with the supervision of the employee or to the County Auditor-Controller's Employee Fraud Hotline at (213) 974-0914 or (800) 544-6861. Failure to report such solicitation may result in the landlord's submission being eliminated from consideration.

(c) Landlord Assignment.

(i) Landlord may assign, transfer, mortgage, hypothecate or encumber Landlord's right, title and interest in and to this Lease or any portion thereof (including the right to receive rental payments but excluding its duties and obligations hereunder), and Landlord may execute any and all instruments providing for the payment of Basic Rent directly to an assignee or transferee, but only if the conditions set forth in this Section are met.

(ii) Any document or agreement purporting to assign, transfer, mortgage, hypothecate or encumber Landlord's right, title and interest in and to this Lease or any portion thereof, is hereinafter referred to as a "Security Agreement." Any Security Agreement which is executed without full compliance with the requirements of this Section shall be void.

(iii) Each assignee or transferee under the Security Agreement shall certify and agree in writing that such assignee or transferee has read and is familiar with the requirements of Sections 5950-5955 of the California Government Code, which prohibits the offer or sale of any security constituting a fractional interest in this Lease or any portion thereof, without the prior written consent of the County. Notwithstanding the foregoing, the County hereby acknowledges and agrees that Landlord shall have the right to encumber the Property with CMBS (collateralized mortgage backed securities) financing or other traditional real estate financing. However, Landlord may not encumber the Property through any type of bond financing vehicle, including, but not limited to certificate of participation financing.

(iv) Violation by Landlord of the provisions of Section 5951 of the California Government Code will constitute a material breach of this Lease, upon which the County may impose damages in an amount equal to the greater of (a) \$500,000 or (b) 10% of the aggregate principal portion of all rental payments payable by the County during the entire Term of this Lease, it being expressly agreed that the aforesaid amount shall be imposed as liquidated damages, and not as a forfeiture or penalty. It is further specifically agreed that the aforesaid amount is presumed to be the amount of damages sustained by reason of any such violation, because from the circumstances and

nature of the violation it would be impracticable and extremely difficult to fix actual damages. In addition, the County may exercise or pursue any other right or remedy it may have under this Lease or applicable law.

(v) Landlord shall give the County notice and a copy of each Security Agreement and any other instrument relating thereto (including, but not limited to, instruments providing for the payment of Basic Rent directly to an assignee or transferee) at least two weeks prior to the effective date thereof.

(vi) Landlord shall not furnish any information concerning County or the subject matter of this Lease (including, but not limited to, offering memoranda, financial statements, economic and demographic information, and legal opinions rendered by the office of counsel for the County) to any person or entity, except with County's prior written consent. Landlord shall indemnify, defend and hold County and its officers, agents and employees harmless from and against all claims and liability alleged to arise from the inaccuracy or incompleteness of any information furnished by Landlord in violation of this Section.

(vii) The provisions of this Section shall be binding upon and applicable to the parties hereto and their respective successors and assigns. Whenever in this Section Landlord is referred to, such reference shall be deemed to include Landlord's successors or assigns, and all covenants and agreements by or on behalf of Landlord herein shall bind and apply to Landlord's successors and assigns whether so expressed or not.

32. IRREVOCABLE OFFER. In consideration for the time and expense that Tenant will invest, including, but not limited to, preliminary space planning, legal review, and preparation and noticing for presentation to the Tenant Real Estate Management Commission of Los Angeles County in reliance on Landlord's agreement to lease the Premises to Tenant under the terms of this Lease, Landlord irrevocably offers to enter into this Lease and not to revoke this offer until the Irrevocable Offer Expiration Date, as defined in Section 1.

33. OPTION TO EXTEND.

(a) Terms of Option. Provided that no material default has occurred and is continuing under the Lease at the time the option is exercised, Tenant shall have two options to renew this Lease for additional periods of five years each (each, an "Option Term").

(b) Exercise of Option. Tenant must exercise its option to extend this Lease, if it elects to do so, by giving Landlord written notice of its intent to do so by Chief Executive Office letter no later than 180 days prior to the end of the initial Term, or first option term, as the case may be.

(c) Terms and Conditions of Extension Term. Each Option Term shall be on all the terms and conditions of this Lease, except that Basic Rent for each Option Term shall be the rate in effect during the last year of the original Lease term (or First Option Term, as the case may be), increased to fair market value by negotiation and mutual agreement of the parties.



IN WITNESS WHEREOF this Lease has been executed the day and year first above set forth.

LANDLORD:

MP Capital, a California Limited Liability Company

By: [Signature]  
Name: \_\_\_\_\_  
Its: \_\_\_\_\_

TENANT:

COUNTY OF LOS ANGELES  
a body politic and corporate

By: [Signature]  
ZEV YAROSLAVSKY  
Chairman, Board of Supervisors

ATTEST:

Sachi A. Hamai  
Executive Officer-Clerk  
of the Board of Supervisors

By: [Signature]  
Deputy



I hereby certify that pursuant to Section 25103 of the Government Code, delivery of this document has been made.

SACHI A. HAMAI  
Executive Officer  
Clerk of the Board of Supervisors

By: [Signature]  
Deputy

APPROVED AS TO FORM:  
John F. Krattli  
County Counsel

By: [Signature]  
Deputy

**ADOPTED**  
BOARD OF SUPERVISORS  
COUNTY OF LOS ANGELES

15:00 OCT 02 2012

[Signature]  
SACHI A. HAMAI  
EXECUTIVE OFFICER

77848

EXHIBIT A  
 FLOOR PLAN OF PREMISES

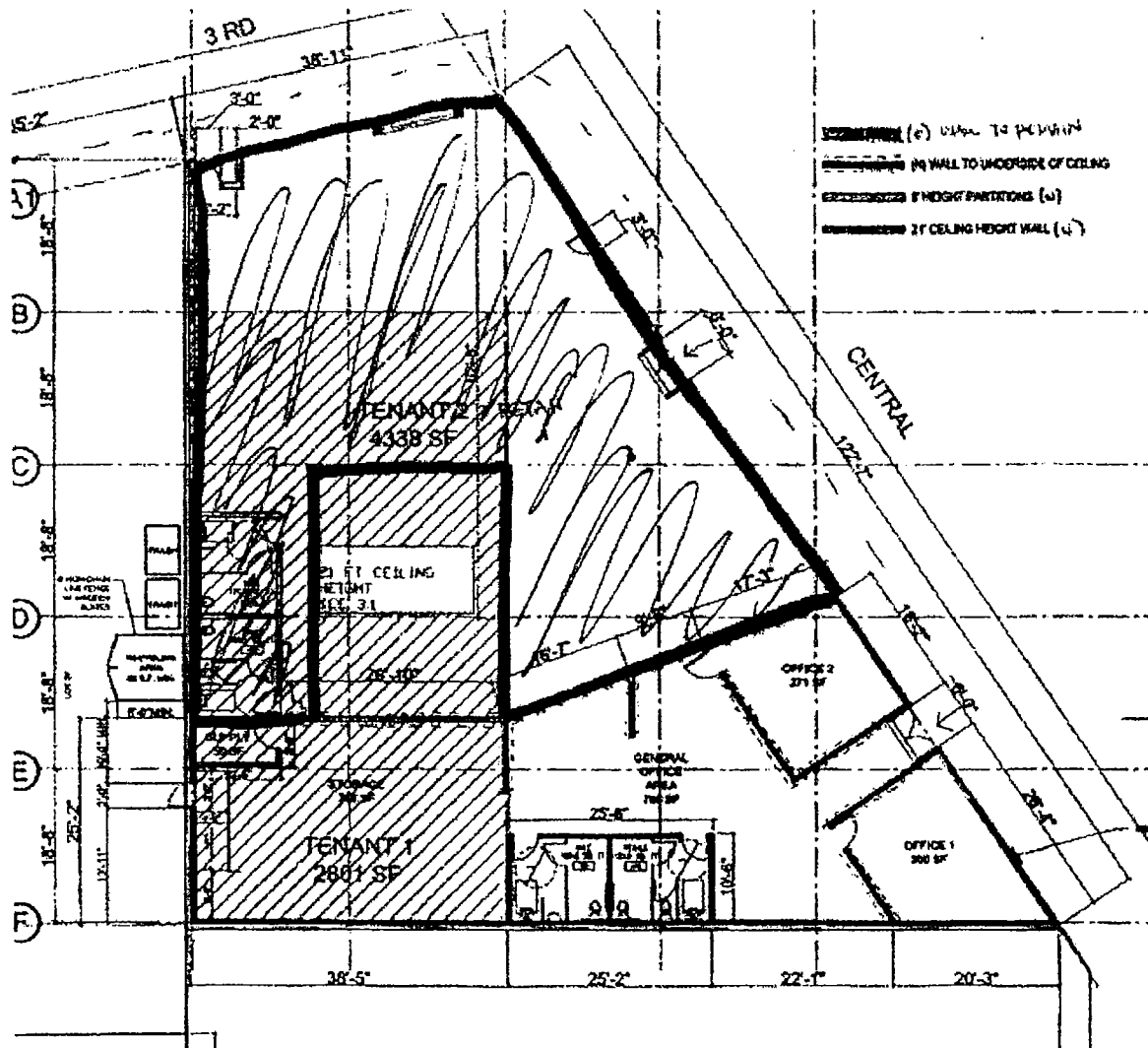


EXHIBIT B

LEGAL DESCRIPTION OF PROPERTY

Lots 28 and 29 of block 5 of Wolf Skill Orchard Tract, in the City of Los Angeles, County of Los Angeles, State of California, as per map recorded in book 30 page 9 of miscellaneous records, of maps, in the office of the County Recorder of said County.

EXHIBIT C

COMMENCEMENT DATE MEMORANDUM  
AND CONFIRMATION OF LEASE TERMS

Reference is made to that certain lease ("Lease") dated \_\_\_\_\_ 2012, between County of Los Angeles, a body politic and corporate ("Tenant"), MP Capital, LLC, a California Limited Liability Company

("Landlord"), whereby Landlord leased to Tenant and Tenant leased from Landlord certain premises in the building located at 301 South Central Avenue and 500 East 3<sup>rd</sup> Street, Los Angeles ("Premises"),

Landlord and Tenant hereby acknowledge as follows:

- (1) Landlord delivered possession of the Premises to Tenant in a Substantially Complete condition on \_\_\_\_\_ ("Possession Date");
- (2) Tenant has accepted possession of the Premises and now occupies the same;
- (3) The Lease commenced on \_\_\_\_\_ ("Commencement Date");
- (4) The Premises contains 3,100 square feet of office space, an 6,865 square foot adjacent supplemental parking lot and
- (5) Basic Rent per Month is \$9,020.

IN WITNESS WHEREOF, this Memorandum is executed this \_\_\_ day of \_\_\_\_\_, 2012.

"Tenant"

"Landlord"

COUNTY OF LOS ANGELES,  
a body politic and corporate

MP Capital, LLC  
a California Limited Liability Company

By: \_\_\_\_\_  
Name: \_\_\_\_\_  
Its: \_\_\_\_\_

By: \_\_\_\_\_  
Name: \_\_\_\_\_  
Its: \_\_\_\_\_

## EXHIBIT D

### HVAC STANDARDS

Landlord shall supply cooling, ventilating and heating with capacity to produce the following results effective during Normal Working Hours established by the Lease and within tolerances normal in comparable office buildings; maintenance of inside space conditions of not greater than 78 degrees Fahrenheit when the outside air temperature is not more than 93 degrees Fahrenheit dry bulb and 70 degrees Fahrenheit wet bulb, and not less than 70 degrees Fahrenheit when the outside air temperature is not lower than 42 degrees Fahrenheit dry bulb. Interior space is designated at a rate of one zone for approximately each 1,000 square feet and one diffuser for each 200 square feet of usable square footage within the Premises. If energy requirements prohibit Landlord from complying with these requirements, Tenant shall not unreasonably withhold its consent to temporary waivers or modifications.

## EXHIBIT E

### CLEANING AND MAINTENANCE SCHEDULE

1. DAILY (Monday through Friday)
  - A. Carpets vacuumed.
  - B. Composition floors dust-mopped.
  - C. Desks, desk accessories and office furniture dusted. Papers and folders left on desk not to be moved.
  - D. Waste baskets, other trash receptacles emptied.
  - E. Chairs and waste baskets returned to proper position.
  - F. Fingerprints removed from glass doors and partitions.
  - G. Drinking fountains cleaned, sanitized and polished.
  - H. Lavatories, toilets and toilet rooms cleaned and mopped. Toilet supplies replenished.
  - I. Bulb and tube replacements, as required.
  - J. Graffiti expunged as needed within two working days after notice by Tenant.
  - K. Floors washed as needed.
  - L. Kitchen/Lunchroom supplies replenished including paper supplies and soap.
  - M. Exclusive day porter service from \_\_\_\_ to \_\_\_\_ **(if provided by contract)**.
  
2. WEEKLY
  - A. Low-reach areas, chair rungs, baseboards and insides of door jambs dusted.
  - B. Window sills, ledges and wood paneling and molding dusted.
  
3. MONTHLY
  - A. Floors washed and waxed in uncarpeted office area.
  - B. High-reach areas, door frames and tops of partitions dusted.
  - C. Upholstered furniture vacuumed, plastic and leather furniture wiped.
  - D. Picture moldings and frames dusted.
  - E. Wall vents and ceiling vents vacuumed.
  - F. Carpet professionally spot cleaned as required to remove stains.
  - G. HVAC chiller water checked for bacteria, water conditioned as necessary.
  
4. QUARTERLY
  - A. Light fixtures cleaned and dusted, but not less frequently than Quarterly.
  - B. Wood furniture polished.
  - C. Draperies or mini-blinds cleaned as required, but not less frequently than Quarterly.
  - D. HVAC units serviced for preventative maintenance purposes, all filters changed.

5. SEMI-ANNUALLY

A. Windows washed as required inside and outside but not less frequently than twice annually.

B. All painted wall and door surfaces washed and stains removed.

C. All walls treated with vinyl covering washed and stains removed.

6. ANNUALLY

A. Furniture Systems and any other fabric or upholstered surfaces including chairs, couches, walls, etc., spot cleaned, or if determined to be necessary in Tenant's sole discretion, professionally cleaned in their entirety using a water extraction system.

B. Bathroom and any other ceramic tile surfaces professionally cleaned using a hand scrub process. All grout and porous surfaces resealed with a professional grade sealant.

C. Touch-up paint all interior painted surfaces in a color and finish to match existing.

7. AS NEEDED

A. Premises and the sidewalks, driveways, parking areas and all means of access and egress for the Premises should be maintained in good repair, and in clean and safe condition at all times.

B. All lawns, shrubbery and foliage on the grounds of the Premises should be maintained in good condition and neat in appearance. Grass and shrubbery must be replanted as needed to maintain the grounds in good appearance and condition.

C. Carpets to be cleaned using a non-detergent, low moisture, soil encapsulation system as recommended by the carpet manufacturer. The following schedule will be maintained for carpet cleaning: (i) heavy traffic areas as needed with a minimum frequency of bi-monthly [six (6) times per year]; (ii) moderate traffic areas cleaned as needed with a minimum of once every six (6) months [two (2) times per year]; and (iii) clean light traffic areas a minimum of once per year. Landlord agrees that bonnet cleaning is not an acceptable method of cleaning carpets.

D. All walls repainted and wall coverings replaced throughout the Premises. The paint finish should be eggshell or semi-gloss as directed by Tenant and in a color acceptable to Tenant. In no event will Landlord be required to repaint or replace wall coverings more than one (1) time in a five (5) year period (the "Occurrence"). The initial tenant improvements completed prior to Tenant's occupancy or as a condition to the renewal of the Lease shall not constitute an Occurrence for the purpose of determining the frequency of this work.

8. GENERAL

Landlord shall, upon request of Tenant, produce written service contracts as evidence of compliance with the terms of this Cleaning and Maintenance Schedule.

**LANDLORD'S WORK LETTER**

**For**

**COUNTY OF LOS ANGELES  
CHIEF EXECUTIVE OFFICE  
LEASE AND AGREEMENT**

**DEPARTMENT: Sheriff, as Tenant**

**LANDLORD: MP Capital, LLC, a California Limited Liability Company**

**301 SOUTH CENTRAL AVENUE**

**500 EAST 3<sup>RD</sup> STREET**

**LOS ANGELES, CA**



## LANDLORD'S WORK LETTER

This Work Letter supplements the Lease (the "Lease") dated \_\_\_\_\_, 20\_\_, executed concurrently herewith, by and between MP Capital, LLC, a California Limited Liability Company ("Landlord") as Landlord, and COUNTY OF LOS ANGELES ("Tenant" or "County") as Tenant, covering certain Premises described in the Lease. Terms capitalized but not otherwise defined herein shall have the meanings ascribed to them in the Lease.

The parties hereby agree as follows:

1. Basic Work Letter Information. The following terms as used herein shall have the meanings provided in this Section unless otherwise specifically modified by provisions of this Work Letter.

(a) <u>Base Tenant Improvement Allowance:</u>	\$46,500 (i.e., \$15 per rentable square foot of the Premises).
(b) <u>Additional Tenant Improvement Allowance:</u>	\$217,000 (i.e., \$70 per rentable square foot of the Premises).
(c) <u>Maximum Change Order Allowance:</u>	\$40,000
(d) <u>Additional Tenant Improvement and Change Order Amortization Rate:</u>	8% per annum.
(e) <u>Basic Rent Reduction per \$1,000:</u>	Not Applicable.
(f) <u>Tenant's Work Letter Representative:</u>	Miguel Covarrubias or an assigned staff person of the Chief Executive Office-Real Estate Division.
(g) <u>Landlord's Work Letter Representative:</u>	An assigned staff person of the Landlord.
(h) <u>Landlord's Address for Work Letter Notice:</u>	See Section 1.1(a) of the Lease.
(i) <u>Tenant's Address for Work Letter Notice:</u>	Board of Supervisors Kenneth Hahn Hall of Administration Room 383 500 West Temple Street Los Angeles, California 90012

	With a copy to: Chief Executive Office- Real Estate Division 222 South Hill Street, 3 <sup>rd</sup> Floor Los Angeles, California 90012 Attention: Director of Real Estate Fax Number: (213) 217-4971
(j) <u>Addenda:</u>	Addendum A: Base Building Improvements Addendum B: Tenant Improvements

2. **Construction of the Building.**

2.1 **Base Building Improvements.** Landlord has constructed or shall construct the base Building improvements as a part of the Building described on Addendum A hereto (the "Base Building Improvements"). To the extent that the Base Building Improvements must be changed or added to in order to accommodate the special needs of Tenant in the Premises, such changes or additions shall be considered Tenant Improvements (as defined below) only to the extent such changes or additions are specifically described in Addendum B hereto.

2.2 **Additional Costs Not Tenant Improvement Costs.**

(a) In the event that the Building as initially constructed does not comply with current life-fire safety codes, disabled access codes (including, without limitation, the ADA), and/or earthquake safety codes, and Landlord incurs increased design or construction costs that it would not have incurred had the Building been in compliance with such codes, such costs shall not be included in the calculation of Tenant Improvement Costs as defined below and Tenant shall have no financial responsibility for such costs.

(b) Any work that Landlord must undertake to cause the Premises to comply with the access requirements of the ADA or make existing building systems, including, but not limited to, electrical service and HVAC equipment, fully operational shall be at Landlord's sole cost and expense. Tenant Improvement Costs shall not include any costs associated with (i) asbestos abatement or compliance with the Hazardous Materials provision of the Lease, including all expenses associated with curing any "Sick Building Syndromes"; (ii) fire sprinkler system installation or upgrade; (iii) conversion of air conditioning systems to eliminate use of CFC refrigerants that are harmful to the atmosphere; (iv) utility costs incurred during construction; (v) costs incurred in order to cause the Premises to comply with any mechanical or electrical requirements set forth in the Lease; or (vi) supervision or overhead costs of Landlord.

(c) Landlord shall be solely responsible for all costs and expenses necessary to increase permitted structural floor loading in order to accommodate Tenant's libraries, file rooms, unusual live loads and other such uses.

2.3 **Base Building Plans.** Landlord has delivered to Tenant "as built" plans and specifications for the Building in an AutoCAD 2000 format. In the event Tenant incurs additional costs because such plans and specifications are incomplete or inaccurate, such increased costs will

be reimbursed to Tenant and any delay caused thereby shall not be a Tenant Delay, as defined below.

3. **Selection of Architect and Engineer.** Landlord shall promptly solicit at least three proposals from qualified licensed architects ("Architect") and engineers ("Engineer") familiar with all applicable laws and building requirements detailing a scope of work sufficient to complete the Working Drawings as defined below. The Architect and the Engineer shall be selected by Landlord subject to Tenant's consent, which consent shall not be unreasonably withheld, and which consent (or refusal to consent for reasonable reasons) shall be granted within three business days after Landlord has submitted the name of the Architect and the Engineer to Tenant together with detailed proposals outlining the cost for design/engineering services. This procedure shall be repeated until the Architect and the Engineer is/are finally approved by Tenant and written consent has been delivered to and received by Landlord.

4. **Selection of Contractor.** The Final Plans, as defined below, and a proposed construction contract approved by Tenant, shall be submitted to contractors, selected by Landlord and approved by Tenant, sufficient in number so that a minimum of three bids are received. Each approved contractor shall be requested to submit a sealed fixed price contract bid price (on such contract form as Landlord shall designate) to construct the Tenant Improvements designated on the Final Plans. Landlord and Tenant shall jointly open and review the bids. Landlord and Tenant, after adjustments for inconsistent assumptions, shall select the most qualified bidder offering the lowest price and such contractor ("Contractor") shall enter into a construction contract ("Construction Contract") with Landlord consistent with the terms of the bid to construct the Tenant Improvements.

5. **Preparation of Plans and Specifications and Construction Schedule.**

5.1 **Preparation of Space Plan.** Concurrently with the execution of this Lease, Tenant shall submit to Landlord a space plan and specifications for the Premises showing all demising walls, corridors, entrances, exits, doors, interior partitions, and the locations of all offices, conference rooms, computer rooms, mini-service kitchens, and the reception area, library, and file room (collectively the "Space Plan").

5.2 **Preparation and Approval of Working Drawings.** Within ten days of the date the Space Plan is submitted to Landlord (the "Plan Submission Date"), Landlord shall instruct the Architect to commence preparation of Working Drawings (the "Working Drawings"), which shall be compatible with the design, construction and equipment of the Building, comply with all applicable laws, be capable of physical measurement and construction, contain all such information as may be required for the construction of the Tenant Improvements and the preparation of the Engineering Drawings (as defined below), and contain all partition locations, plumbing locations, air conditioning system and duct work, special air conditioning requirements, reflected ceiling plans, office equipment locations, and special security systems. The Working Drawings may be submitted in one or more stages and at one or more times. Landlord shall provide Tenant the Working Drawings, or such portion as has from time to time been submitted, for review. Landlord shall be solely responsible for insuring that the Working Drawings fully comply with all applicable building codes and are free from errors or omissions on the part of the Architect.

5.3 **Preparation and Approval of Engineering Drawings.** Landlord shall cause the Architect to coordinate all engineering drawings prepared by the Engineer, showing complete mechanical, electrical, plumbing, and HVAC plans ("Engineering Drawings") to be integrated into

the Working Drawings. The Engineering Drawings may be submitted in one or more stages and at one or more times for Tenant's review.

5.4 Integration of Working Drawings and Engineering Drawings into Final Plans. After Tenant has approved the Engineering Drawings, Landlord shall cause the Architect to integrate the approved Working Drawings with the approved Engineering Drawings (collectively "Final Plans") and deliver five sets of the Final Plans to Tenant. The Final Plans shall be suitable for plan check review and permitting by local agencies having jurisdiction, for the layout, improvement and finish of the Premises consistent with the design and construction of the Base Building Improvements, including electrical and mechanical drawings, capacity reports, dimensioned partition plans, floor and wall finish plans, reflected ceiling plans, power, telephone communications and data plans, life safety devices, construction detail sheets including millwork detail plans showing the location of partitions, light fixtures, electrical outlets, telephone outlets, sprinklers, doors, equipment specifications (including weight specifications and cooling requirements) and power requirements (including voltage, amps, phase, and special plugs and connections), wall finishes, floor coverings, millwork and other Tenant Improvements.

5.5 Approval of Plans by Tenant. Approval by Tenant shall not be deemed to be a representation by Tenant as to the adequacy or correctness of the design of the Tenant Improvements.

5.6 Schedule. Within 30 days after the Plan Submission Date, Landlord shall submit to Tenant a detailed construction schedule, subject to approval by Tenant which approval shall not be unreasonably withheld, setting forth the dates specific completion of certain project benchmarks including, but not limited to, completion of Working Drawings, completion of Engineering Drawings, submission of plans to local jurisdiction for review, issuance of building permit, submission of plans to contractors for bidding, award of construction contract, construction commencement, construction completion, Projected Commencement Date and other similar dates. As the construction continues, Landlord shall amend the schedule from time to time to reflect any changes to the projected dates.

## 6. Final Construction Budget and Payment of Tenant Construction Costs.

6.1 Construction Budget. Within three days after the Plan Submission Date, Landlord shall submit to Tenant a preliminary budget (the "Preliminary Budget"). Such budget shall be revised into final form within ten days from of the date the Contractor is selected and will be referred to herein as the "Final Construction Budget". Tenant shall have five days from the date of receipt of the Final Construction Budget to approve or disapprove the Final Construction Budget. Construction of the Tenant Improvements shall not begin until such time as Tenant indicates its approval or disapproval of the Final Construction Budget or the five day period expires without any response from Tenant. In the event Tenant disapproves the Final Construction Budget due to matters related to cost and the Final Construction Budget is ten percent (10%) or more higher in cost than was projected in the Preliminary Construction Budget, then any delay caused by the necessity to rebid or redesign the Tenant Improvements shall not be considered a Tenant Delay. Landlord shall review the Space Plan, Working Drawings, Engineering Drawings and Final Plans at its sole cost and expense. No fee for profit, overhead or general conditions in connection with the construction of the Tenant Improvements shall be included in the Final Construction Budget unless approved by Tenant.

6.2 Additional Tenant Improvement Allowance. All improvements required by the Working Plans and modular furniture described in the Modular Specifications, as further described in Addendum B hereto (collectively, the "Tenant Improvements") shall be at Landlord's sole cost and expense. Costs of Tenant Improvements shall include, without limitation, construction costs, furniture, telecommunications equipment, soft costs and any other costs designated in writing by Tenant not to exceed, in the aggregate, the sum of the Base Tenant Improvement Allowance, the Additional Tenant Improvement Allowance and costs of Change Orders, as defined below (collectively "Tenant Improvement Costs"). Landlord shall be solely responsible for any delay or increased cost in completing the Tenant Improvements except for delays or costs arising from Tenant Delays as defined below. It is anticipated that the Tenant Improvement Costs will exceed the Tenant Improvement Allowance, and Tenant's Chief Executive Office may authorize Landlord to pay the overage in an amount not exceeding the Additional Tenant Improvement Allowance. The Additional Tenant Improvement Allowance shall be paid to Landlord as provided herein.

6.3 Method of Payment. That portion of the Additional Tenant Improvement Allowance used to pay for the Tenant Improvement Costs may, at Tenant's election be paid to Landlord (i) in a lump sum when the Tenant Improvements are Substantially Complete, or (ii) in equal amortized monthly payments over the term of the Lease at the Tenant Improvement Amortization Rate. Tenant may at any time during the Term prepay Landlord in a lump sum for all or any portion of the Tenant Improvement Costs, amortizing any remaining amount in monthly payments over the term of the Lease at the Tenant Improvement Amortization Rate.

## 7. Construction of Tenant Improvements.

7.1 Tenant Improvements. Tenant Improvements to be constructed by Landlord are described more particularly on Addendum B hereto. If any work required by the Final Plans is not described on Addendum B hereto the work shall be performed by Landlord at its own cost and expense and not included in the cost of Tenant Improvements.

7.2 Bids. Unless waived by Tenant in writing, any major contractors, subcontractors and materials providers providing labor and/or materials for the Tenant Improvements shall be selected only after at least three bids have been solicited from responsible and qualified persons. Landlord shall submit at least three sealed fixed price bids for the construction of the Tenant Improvements to Tenant for its review prior to the award of the Construction Contract. The bids shall be jointly opened and reviewed. The bids shall include an itemized list of all materials and labor and shall include all additional costs, including architects and engineering fees, permits, reasonable contractor's profit and overhead, and project management fees. At least three bids for the purchase and installation of the office furniture system, prepared by the furniture dealer, shall be included in the construction estimates, if applicable.

(a) Permits. Landlord shall secure the approval of governmental authorities, and all permits required by governmental authorities having jurisdiction over such approvals and permits for the Tenant Improvements, promptly after approval of the Final Plans.

(b) Commencement of Construction. Landlord shall commence construction of the Tenant Improvements within 15 days after issuance of all such necessary permits. Landlord shall commence and, once commenced, shall thereafter diligently proceed to construct and complete all Tenant Improvements, subject to any cessation that may be caused by Force Majeure Delays.

7.3 Construction. Construction of the Tenant Improvements will be subject to the following terms and conditions:

(a) Notice of Nonresponsibility. Landlord and the Contractor shall cooperate with Tenant in posting a notice or notices of nonresponsibility by Tenant.

(b) Decorating Decisions. All design and programming, space planning and interior decorating services, such as selection of wall paint colors and/or wall coverings, furniture, fixtures, carpeting and any or all other decorator selection efforts required by Tenant, shall be provided by Landlord at Landlord's expense in accordance with Tenant's Space Plan. Landlord shall consult with Tenant with respect to all such decorating services and decisions.

(c) Clean-Up and Substandard Work. Landlord will be responsible for all clean-up with respect to the Tenant Improvements, whether in the Premises themselves or in other areas utilized by Landlord or its contractors, and agrees to reimburse Tenant for any and all expenses incurred by Tenant by reason of substandard work performed by Landlord's contractor or contractors (as reasonably determined by Tenant according to the usual standards of work in the Building) or as a result of inadequate clean-up.

(d) Compliance with Laws. Construction of the Tenant Improvements shall comply with all applicable laws and regulations and shall be subject to the general inspection of Tenant. The Premises shall comply with all applicable city, county, state and federal building codes, regulations and ordinances required for beneficial occupancy, including, but not limited to, all provisions of the Labor Code of the State of California. Under the provisions of the Labor Code, the State Department of Industrial Relations will ascertain the prevailing hourly rate in dollars and details pertinent thereto for each craft, classification or type of workman or mechanic needed for the construction of the improvements. Particulars of the current Prevailing Wage Scale as approved by the Board of Supervisors which are applicable to the work are filed with the Clerk of the Board of Supervisors and must be posted at the site.

7.4 Conformed Plans. Within 60 days after Substantial Completion of the Tenant Improvements and receipt from the Contractor of all field changes, Landlord shall submit to Tenant a set of conformed plans ("as-builts") incorporating, in accordance with standard industry custom and practice, field changes made and changes and/or revisions that have been made subsequent to the submission of the Final Plans. Such "as-built" or "record documents" shall be submitted on three and one-half inch (3½") 1.4Mb magnetic media diskettes in Auto CAD R 12.dwg (or later version) format or .DXF format, along with one complete set of mylar transparencies of drawings and one complete set of specifications.

8. Change Orders. Tenant and Landlord may make changes, additions, deletions or alterations in the Final Plans ("Change Order") provided both Tenant and Landlord approve such changes in writing. The amount of the Maximum Change Order Allowance set forth in Section 1 has been authorized by the Board of Supervisors of the County to be used to pay the costs of all authorized Change Orders but only the Chief Executive Officer is authorized to approve Change Orders on behalf of Tenant and then only if the aggregate amount of such approved Change Orders does not exceed the Maximum Change Order Allowance. Tenant may elect to pay for Change Orders by: (a) payment in a lump sum upon Substantial Completion of the Tenant Improvements, or (b) amortization of such costs over the initial Term of the Lease at the Change Order Amortization Rate payable in equal monthly installments over the initial Term of the Lease. Landlord shall submit to the Chief Executive Officer with each requested Change Order (i) the specific cost of the requested change, (ii) the cumulative net total cost of all Change Orders previously approved, and (iii) an estimate of the construction time which will be increased or shortened if the Change Order is approved. Each Change Order must be signed and dated by the Chief Executive Officer.

9. **Furniture System.**

9.1 Tenant shall deliver to Landlord within ten days after execution hereof, modular furniture plans and specifications (the "Modular Specifications"). Based on the Modular Specifications, Landlord and /or Landlord's Architect, shall prepare a modular furniture specifications bid package for submission to no less than three furniture vendors. Prior to submission for bids, Landlord shall review the bid package with Tenant and Tenant shall have the right to approve or disapprove the bid package. Landlord shall provide at its cost the modular furniture set forth in the Modular Specifications and shall not be responsible for the cost of such modular furniture in excess of the Additional Tenant Improvement Allowance. Tenant shall reimburse the Landlord in a lump sum or in accordance with a financed transaction entered into between Landlord and the furniture vendor acceptable to the Tenant, including, but not limited to, a lease purchase agreement, provided the outstanding balance can be no more than One Dollar (\$1) at the end of a term not to exceed 120 months.

9.2 Tenant may opt to finance the lump-sum payment for the cost of modular furniture through lease-purchase financing with a third-party vendor ("Creditor"). In the event the Tenant elects to enter into a lease-purchase financing of the furniture and telecommunications equipment (the "Personal Property") through a Creditor, Landlord expressly agrees as follows:

(a) The Personal Property shall not become part of the realty or real property, but shall remain personal property removable by the Creditor and its assigns, provided that any damage occasioned by such removal shall be repaired by Creditor.

(b) Landlord shall be notified by Creditor of any plan by Creditor to remove the Personal Property.

(c) This section shall be binding on the representatives, successors and assigns of all parties hereto and shall inure to the benefit of the successors-in-interest to all parties hereto.

(d) Landlord does hereby waive any right to gain possession of any of Personal Property during the term of this Lease.

10. **Tenant Improvement Costs Adjustment and Right to Audit.** Within five days of the issuance of a Certificate of Occupancy, or a final sign-off by the City of Los Angeles, which ever occurs first, Landlord shall provide to Tenant a statement showing in reasonable detail all Tenant Improvement Costs and the total amount payable hereunder by Tenant to Landlord. Upon approval of the statement by Tenant, payments by either party pursuant to the Lease and this Landlord's Work Letter shall be adjusted as appropriate, based upon such statement. Tenant shall have the right to audit these costs for a period of 24 months from the date of acceptance by Tenant of the Premises. In the event the audit shows that Tenant is entitled to a reduction in payments to the Landlord under this Landlord's Work Letter, Tenant shall provide Landlord with a copy of the audit summary and Landlord, within 30 days, shall refund to Tenant the amount of any overpayment made by Tenant and all future payments shall be adjusted as appropriate based upon the audit results.

11. **Exclusions.** The Tenant Improvement Costs shall not include any costs incurred for asbestos abatement, fire sprinkler system, or conversion of air conditioning systems to eliminate use of CFC refrigerants that are harmful to the atmosphere. All work for required asbestos abatement, fire sprinkler system, or air conditioning system conversion shall be performed at the sole cost and expense of Landlord.

12. **Telephone/Computer Room and Equipment.** Landlord shall complete the telephone equipment room(s) including permanent power and HVAC, in compliance with the Space Plan and specifications provided by Tenant, at least 30 days prior to the Projected Commencement Date. During this 30 day period, the Landlord shall be solely responsible for any telephone/data equipment delivered to the site for programming prior to the Projected Commencement Date.

13. **Delay.**

13.1. **Tenant Delays and Force Majeure Delays.** Except as set forth herein, no delay in the completion of construction of the Tenant Improvements shall be considered in the determination of the Commencement Date of the Lease and, except as set forth herein or in the Lease, under no circumstance shall Tenant be charged with any delay whatsoever as a result of delay in the construction of Tenant Improvements. Subject to the provisions of Section 13.2, the Projected Commencement Date set forth in the Lease shall be extended one (1) day for each day that: (i) Tenant fails or refuses to give authorizations or approvals within the time periods required herein but only to the extent such delays delay the commencement or completion of construction of the Tenant Improvements (referred to herein as "Tenant Delay(s)"); or (ii) Substantial Completion of the Tenant Improvements is delayed by lightning, earthquake, fire, storm, tornado, flood, washout, explosion, strike, lockout, labor disturbance, civil disturbance, riot, war, act of a public enemy, sabotage or other similar causes beyond the reasonable control of Landlord (referred to herein as "Force Majeure Delay(s)").

13.2. **Limitations.**

(a) **Notice.** No Tenant Delay or Force Majeure Delay shall be deemed to have occurred unless Landlord has provided written notice, within 48 hours of the event giving rise to such claim, in compliance with the Lease, to Tenant specifying that a delay is claimed to have occurred because of actions, inaction or circumstances specified in the notice in reasonable detail. If such actions, inaction or circumstances qualify as a Tenant Delay or Force Majeure Delay, then a Tenant Delay or Force Majeure Delay, as applicable, shall be deemed to have occurred only commencing as of the date Tenant received such notice from Landlord.

(b) **Mitigation.** Tenant Delays and Force Majeure Delays shall delay the Projected Commencement Date only in the event that Substantial Completion of the Tenant Improvements is delayed, despite Landlord's reasonable efforts to adapt and compensate for such delays, which efforts Landlord shall be obligated to make (provided such additional cost incurred by Landlord due to such effort does not exceed \$1,000 on a cumulative basis, unless Tenant agrees to pay to such excess).

(c) **Concurrent Delays.** Tenant Delays and Force Majeure Delays shall be recognized hereunder only to the extent the same are not concurrent with any other Tenant Delay or Force Majeure Delay which is effective hereunder. For example, if there are ten days of Tenant Delays and four days of Force Majeure Delays which occur during the same ten day period of such Tenant Delays, then the Projected Commencement Date would be extended by only ten days; on the other hand, if such Tenant Delays and Force Majeure Delays did not occur during the same period, the Projected Commencement Date would be extended by 14 days.



(d) Change Orders. Landlord may not claim that a Change Order requested by Tenant was the cause of a delay in the construction of the Tenant Improvements unless the anticipated delay is specified in writing in the Change Order authorization.

14. **Default**. Any default by Landlord under the terms of this Landlord's Work Letter shall constitute a default under the Lease and shall entitle Tenant to exercise all remedies set forth in the Lease.

15. **Tenant Remedies**. If Landlord fails to obtain the building permit to construct the Tenant Improvements within a reasonable time, taking all factors into consideration, or if Tenant Improvements have not been completed within 60 days after the Projected Commencement Date, Tenant may, at its option:

15.1. Cancel the Lease upon 30 days written notice to Landlord; or

15.2. Upon 30 days written notice to Landlord, assume the responsibility for providing the Tenant Improvements itself. If Tenant elects to provide Tenant Improvements itself, then:

(a). Tenant, its officers, employees, agents, contractors and assignees, shall have free access to the Premises and the Building at all reasonable times for the purpose of constructing the Tenant Improvements and for any other purposes reasonably related thereto; and

(b). Rent shall be reduced by Tenant's total expense in constructing the Tenant Improvements, including any financing charges for capital and a reasonable amount for its administrative costs, and including interest at the rate of six percent (6%) (collectively, "Tenant's Total Expense"). The rent reduction schedule shall be as mutually agreed to between the parties or, if no such agreement is made, Tenant's Total Expense shall be fully amortized in equal monthly amounts over five years and deducted from the rent payable under the Lease.

16. **Representatives**.

16.1 Tenant Representative. Tenant has designated Tenant's Work Letter Representative as its sole representative with respect to the matters set forth in this Landlord's Work Letter who, until further notice to Landlord, shall have the full authority and responsibility to act on behalf of Tenant as required in this Work Letter and whose address, for purposes of any notices to be given regarding matters pertaining to this Landlord's Work Letter only, is Tenant's Address for Work Letter Notice as set forth in Section 1.

16.2 Landlord Representative. Landlord has designated Landlord's Work Letter Representative as its sole representative with respect to the matters set forth in this Work Letter who, until further notice to Tenant, shall have the full authority and responsibility to act on behalf of Landlord as required in this Landlord's Work Letter and whose address, for purposes of any notices to be given regarding matters pertaining to this Landlord's Work Letter only, is Landlord's Address for Work Letter Notice as set forth in Section 1.

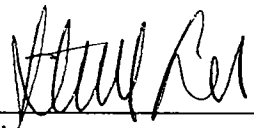
17. **Elevator Usage During Move-In**. In the event that the use of the freight elevators and/or hoists is not sufficient to meet Tenant's requirements, Landlord shall cause to be made operational (a) a temporary construction elevator and hoist, or (b) Tenant shall have priority usage of two passenger elevators in the elevator bank that services the Premises in order to assist Tenant in the installation of Tenant's fixtures, furniture and equipment.

18. **Construction Meetings.** During the course of construction, meetings shall be held between the Contractor, Landlord and Tenant at least once per week, unless Tenant directs otherwise, at a time and place which is mutually convenient. An initial construction meeting shall be held within five days of the date the Contractor is selected.

19. **Delivery.** Delivery of all plans and drawings referred to in this Work Letter shall be by commercial messenger service or personal hand delivery, unless otherwise agreed by Landlord and Tenant.

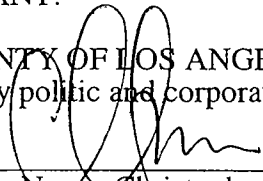

LANDLORD:

MP Capital, LLC  
a California Limited Liability Company

By:   
Name: \_\_\_\_\_  
Title: \_\_\_\_\_  
Date Signed: \_\_\_\_\_

TENANT:

COUNTY OF LOS ANGELES,  
a body politic and corporate

By:   
Name: Christopher M. Montana  
Title: Acting Director of Real Estate  
Date Signed:  7/18/12

## ADDENDUM A To Landlord's Work Letter

### BASE BUILDING IMPROVEMENTS

Landlord has constructed (or will construct) the Building to include the following:

- (a) The Building shell and exterior, including perimeter window frames, mullions and glazing in good condition;
- (b) The core area, including mechanical, electrical, sprinkler, plumbing, life safety, heating, air conditioning, ventilation and structural systems within the Building core, stubbed out to the face of the core wall at locations determined by Landlord;
- (c) Separate men's and women's toilet rooms, including necessary plumbing fixtures, ceramic tile floors, accessories, ceilings and lighting, with running hot and cold water;
- (d) Unpainted exterior dry wall or lath and plaster covering the exposed side of all exposed core walls, core and perimeter columns and the interior exposed side of all exterior building wall areas except at and under windows;
- (e) Public stairways;
- (f) Passenger and freight elevators;
- (g) Parking facilities;
- (h) Ground floor lobby;
- (i) Finished elevator lobbies (with carpet, lights, finished walls and ceiling);
- (j) Exterior plazas and landscaping;
- (k) Loading dock and/or area;
- (l) Two drinking fountains at the core with one ADA compliant;
- (m) Electrical/telephone closet with not less than seven watts per square foot of rentable area of normal power in the floor electrical closet;
- (n) Conduit access sufficient for Tenant's electrical wiring (no additional improvement to increase conduit access will be furnished by Landlord unless there is not sufficient riser space as required for a 1.5" diameter signal cable from the Building main telecommunication vault to the telephone closets on floors \_\_\_\_\_, in which case Landlord, at no cost to Tenant and without deduction from the Tenant Improvement Allowance, shall cause such riser space to be made available to Tenant, and provided further that Tenant shall be responsible for the cost for removing the riser floor seal at each floor and the patching of each seal after installation of Tenant's cable);
- (o) Two 208/120 and one 480/277 volt panels connected to the Building power system;
- (p) Mechanical equipment room with ducted mechanical exhaust system;
- (q) Concrete floors with trowelled finish, level to specified tolerances and designed to support a minimum live load of 50 pounds per square foot and a partition load of 20 pounds per square foot;

- (r) Standard window coverings;
- (s) Primary HVAC duct for cooling and primary HVAC duct for heating (heating is for perimeter zone only) to loop from the mechanical equipment room around the building core;
- (t) Hot and cold air loops located within the Premises;
- (u) Primary fire sprinkler distribution, including secondary piping and sprinkler heads as required for the unoccupied Premises;
- (v) Primary fire-life safety enunciation system "backbone" and panels suitable for Tenant's secondary distribution;
- (w) Access at panels in the service core for distribution of Building requirements electrical power (initially 120/208 V for power and 277V for fluorescent lighting) up to the limits permitted under applicable law at the time the Building receives the initial temporary certificate of occupancy for the Building; and
- (x) Gypsum board on the service core walls, columns and sills in the Premises.

## **ADDENDUM B To Landlord's Work Letter**

### **TENANT IMPROVEMENTS**

Tenant improvements shall include:

- (a) Tenant ceilings and lighting;
- (b) Floor finish in the Premises (except elevator lobbies and public corridors on multi-tenant floors and toilet rooms);
- (c) Interior finishes of any kind within the Premises (except elevator lobbies and public corridors on multi-tenant floors and core area toilet rooms);
- (d) Interior partitions, doors and hardware within the Premises;
- (e) Terminal boxes and reheat coils or other HVAC or air distribution devices to or within the Premises;
- (f) As applicable, Tenant's furniture, fixtures and equipment, including telephones, computers and cabling therefor;
- (g) Distribution of electrical services, plumbing services and sprinklers from the core to the Premises, and domestic hot water heater and associated hot water piping;
- (h) Any and all signs for Tenant and the power therefor;
- (i) Security, fire and life-safety systems throughout the Premises, including exit signs, intercoms and extinguishers;
- (j) Additional and/or above standard electrical capacity; and
- (k) Fiber optic access.