



LEROY D. BACA, SHERIFF

County of Los Angeles  
Sheriff's Department Headquarters  
4700 Ramona Boulevard  
Monterey Park, California 91754-2169



September 18, 2012

The Honorable Board of Supervisors  
County of Los Angeles  
383 Kenneth Hahn Hall of Administration  
Los Angeles, California 90012

Dear Supervisors:

**30-DAY STATUS OF RECOMMENDATIONS MADE IN THE OCTOBER 18, 2011,  
BOARD OF SUPERVISORS' MEETING REGARDING THE MERRICK BOBB AND  
OFFICE OF INDEPENDENT REVIEW REGARDING THE JAIL SYSTEM**

On October 18, 2011, the Board requested that the Los Angeles County Sheriff's Department (Department) report back on the motion to immediately implement the recommendations previously made by Special Counsel Merrick Bobb and the Office of Independent Review (OIR). In addition, the Board requested the Department report back on deputy worn video cameras, the status of the Department's hiring practices, sting audits, a force rollout team, and the length of time deputies serve in the jails. Attached is an update on each recommendation from the August 24, 2012, response.

Should you have any questions or require additional information, please contact me or Assistant Sheriff Cecil W. Rhambo, Jr., at (323) 526-5065.

Sincerely,

A handwritten signature in blue ink that reads "Leroy Baca".

LEROY D. BACA  
SHERIFF

*A Tradition of Service*

RECOMMENDATIONS BY MERRICK BOBB AND OFFICE OF INDEPENDENT REVIEW  
REGARDING THE JAIL SYSTEM

**COUNTY OF LOS ANGELES - SHERIFF'S DEPARTMENT**

The purpose of this document is to provide a status of the recommendations by date and title, prepared by Special Counsel Merrick Bobb, the Office of Independent Review, and the Board of Supervisors.

- I. Install surveillance cameras at the Men's Central Jail, the Inmate Reception Center and the Twin Towers Correctional Facility within 30 days and develop a plan to purchase and install surveillance cameras at the remaining jail facilities.**

*The Department has installed all 705 cameras at Men's Central Jail (MCJ). As of May 31, 2012, all cameras are online and recording.*

*The Department is installing cameras at Twin Towers Correctional Facility (TTCF) and the Inmate Reception Center (IRC). Currently, 649 cameras have been installed at TTCF (2 recording) and 66 cameras have been installed at IRC (19 recording).*

*The attached document (Camera Project Status Report) depicts the Department's current status on camera installation and the projected total of cameras.*

**Data Storage**

*The servers and storage equipment, together, provide storage of video footage. They were deployed the first quarter of 2012. Additional hard drives and storage enclosures have been deployed to provide long-term storage of the video footage. Technicians are analyzing equipment efficiency and storage capacity as cameras are added to the storage system. Options regarding the expansion of video storage have been considered in order to meet legal and Board approved requirements for archived video, while ensuring quality resolution at various frame rates.*

*The network upgrade for MCJ was completed at the end of April 2012. The installation of the servers and storage equipment was completed at the end of May 2012. The network upgrade for all of TTCF and IRC is currently underway and is scheduled to be completed in November 2012. The remaining cameras for TTCF and IRC are scheduled to be brought on line in December 2012.*

RECOMMENDATIONS BY MERRICK BOBB AND OFFICE OF INDEPENDENT REVIEW  
REGARDING THE JAIL SYSTEM

**Policy**

*The Department has drafted a new policy regarding video surveillance. The policy is in the final stages of being reviewed by Department executives and County Counsel.*

**II. Eliminate the use of heavy flashlights as batons to subdue inmates.**

*Recommendation implemented – Effective September 1, 2012*

*The Sheriff directed and approved a new policy to limit the size and weight of the flashlight. The policy specifies that the flashlights shall not weigh more than 16 ounces, and shall not be more than 13 inches in length. Flashlights longer than 6 inches shall be of plastic or nylon composite material only. The Custody Division Manual (CDM) section 3-06/055.20 Flashlights, was published on May 23, 2012. The policy was implemented on September 1, 2012, in order to provide a reasonable period of time to acquire policy conforming flashlights.*

*In August 2012, all custody assistants were issued new high quality flashlights, made of durable lightweight composite material, approximately 13 inches in length. All deputies were provided a light weight battery sleeve to bring their current duty-issued flashlights into compliance with the new policy.*

**III. Eliminate the use of “steel-toe” shoes.**

*Recommendation implemented.*

*On October 24, 2011, the Department made revisions to the existing “Footwear” policy (MPP 3-03/225.00). This policy was published into the Department’s Manual of Policy and Procedures and disseminated to all personnel on February 10, 2012.*

*Research of existing personnel showed that Department personnel have never worn “steel toe” boots in any capacity; however, the Department formally revised the policy to strictly prohibit any use of “steel toe” boots.*

**IV. Revise the Policy on Head Strikes with Impact Weapons to forbid all head strikes, including, but not limited to, head strikes against fixed objects such as floors, walls or jail bars, unless the standard for lethal force has been met.**

*Recommendation implemented.*

RECOMMENDATIONS BY MERRICK BOBB AND OFFICE OF INDEPENDENT REVIEW  
REGARDING THE JAIL SYSTEM

*On October 10, 2011, the Sheriff initiated a "Force Prevention" policy (CDM 3-02/035.00) which provides direction for personnel relating to respect based treatment of incarcerated individuals. This policy was published into the Custody Division Manual and disseminated to all custody assigned personnel on November 8, 2011. The policy was then discussed with the ALADS working group in which revisions were made. The revised Force Prevention policy was republished and redistributed to all personnel in the jails on March 19, 2012.*

*On October 26, 2011, the Department made additions to the existing "Unreasonable Force" (MPP 3-01/025.10) policy and the "Activation of Force/Shooting Response Teams" (MPP 5-09/434.05) to strictly prohibit head strikes against a hard object. Unless otherwise handled by the Internal Affairs Bureau (IAB), the Custody Force Response Team (CFRT) responds to all force incidents where any head strike occurs, whether the strike is initiated by personnel, or by contact with floors, walls or other hard objects. The "Unreasonable Force" and "Activation of Force/Shooting Response Teams" policies were published into the Department's Manual of Policy and Procedures and disseminated to all personnel on February 13, 2012.*

**V. Rotate jail deputies between floors at Men's Central Jail and other jail facilities at no less than six-month intervals.**

*Recommendation implemented partially.*

*In January 2011, Men's Central Jail began rotating their staff no less than every six months. After consulting with ALADS, a new Custody Directive "Mandatory Rotation of Line Personnel in Custody" (12-001) was published and disseminated to all custody personnel on February 17, 2012, mandating the rotation of all custody line personnel every six months within their assigned facility. All facilities (MCJ, TTCF, IRC, CRDF, MLDC, and all PDC facilities) began rotating personnel every six months effective February 17, 2012. Due to a myriad of complications, there are no plans to mandate the rotation of custody personnel between facilities at this time.*

**VI. Enforce the Anti-Retaliation Policy to prevent Sheriff's deputies from retaliating against inmates speaking with legal representatives or inmate advocacy groups or for expressing dissatisfaction with jail conditions.**

*Recommendation implemented.*

*In August 2011, the Department made revisions to the existing "Treatment of Inmates" (CDM 5-12/005.00) policy to prevent deputies from retaliating against inmates. All staff assigned to Custody Division were provided a formal briefing*

RECOMMENDATIONS BY MERRICK BOBB AND OFFICE OF INDEPENDENT REVIEW  
REGARDING THE JAIL SYSTEM

*on the revisions to the policy. The briefing began August 4, 2011, and continued for a two-week period. In addition, the Department redistributed the policy on October 25, 2011, for another two-week recurring briefing to ensure each staff member was fully aware of the expectations of the policy and mandated quarterly recurring briefings be conducted.*

*The Department made additional revisions to the existing "Treatment of Inmates" policy in order to separate and create specific orders relating to retaliation against inmates. The Custody Division Manual, "Anti-Retaliation Policy" (CDM 5-12/005.05) mandates that all complaints of retaliation are forwarded to IAB; the captain of IAB will determine which unit will conduct the investigation. This revised version of the "Treatment of Inmates" policy and the new "Anti-Retaliation Policy" were published and disseminated to all custody personnel on February 27, 2012. In response to further discussions with the ACLU, the Department is reexamining the current policies.*

- VII. Interviews of inmates who make claims of excessive force should not be conducted by, or in the presence of, the deputies or their supervising sergeant involved in the alleged use of force.**

*Recommendation implemented.*

*On October, 26, 2011, the Department made revisions to the existing "Use of Force Reporting and Review Procedures" (MPP 5-09/430.00) policy ensuring privacy during force interviews. This policy was published in the Department's Manual of Policy and Procedures and disseminated to all personnel on February 13, 2012.*

- VIII. Interviews of inmates alleging use of force and any witnesses must occur as soon as feasibly possible, but no later than 48 hours of the incident.**

*Recommendation implemented.*

*On October, 26, 2011, the Department made revisions to the existing "Use of Force Reporting and Review Procedures" (MPP 5-09/430.00) policy directing supervisors to immediately conduct interviews. As noted in VII, this policy was published in the Department's Manual of Policy and Procedures and disseminated to all personnel on February 13, 2012.*

- IX. Develop a prioritization process for Use of Force Investigations to ensure that the most severe incidents are completed within 30 days and that all others are completed within 60 to 90 days.**

RECOMMENDATIONS BY MERRICK BOBB AND OFFICE OF INDEPENDENT REVIEW  
REGARDING THE JAIL SYSTEM

*Recommendation implemented.*

*The Department developed the CFRT to ensure that significant force cases, not handled by IAB, are externally evaluated and completed within 30 days. Upon completion, they are reviewed by the newly formed Custody Force Review Committee (CFRC), which consists of three commanders. The last CFRC was conducted on August 23, 2012, and included oversight by the Office of Independent Review (OIR). The next CFRC is scheduled for September 18, 2012. To date, the CFRC has reviewed 38 cases. Of those, 5 have been referred to IAB and none have been referred to ICIB.*

*The Department continues to process the most severe incidents as IAB investigations, which are generally completed within 90 days unless unexpected circumstances arise.*

*The CFRT Directive was published and disseminated to all custody personnel on November 7, 2011. The aforementioned CFRT Directive was revised and published as a Custody Division Policy on May 23, 2012. The CFRC policy was published and disseminated to all custody personnel on April 16, 2012.*

- X. Develop a plan for more intense supervision that requires jail sergeants to directly supervise jail deputies, including walking the row of jail cells and floors and responding as soon as possible to any notification of interaction where force is being used on an inmate.**

*Recommendation Implemented at MCJ.*

*On October 27, 2011, the Department delivered a letter to the Chief Executive Officer requesting additional supervisory staff in the jails. However, the Department felt it was imperative to immediately increase staffing at MCJ.*

*Effective November 6, 2011, 19 sergeants were added to MCJ's current staffing to ensure the appropriate supervision was in place. These items were removed from other critical areas within the Department and deployed to cover both Day and PM shifts. Funding for these items was requested in a letter to the CEO on October 26, 2011, however to date the request has gone unfulfilled. There are now 2 sergeants assigned to 2000, 3000, 4000, 5000, and 9000 floors, and a full-time sergeant is dedicated to 1700/1750. All sergeants were briefed on the expectations to be visible and actively monitoring activity on the floor at all times. In addition, the Department has completed "duty statements" for all custody personnel to ensure they have a full understanding of the expectations of their assignment.*

RECOMMENDATIONS BY MERRICK BOBB AND OFFICE OF INDEPENDENT REVIEW  
REGARDING THE JAIL SYSTEM

- XI. Immediately mandate that all custody medical personnel report all suspicious injuries of inmates to the Internal Affairs Bureau or the captain of the jail facility where the inmate is housed.**

*Recommendation implemented.*

*On October 26, 2011, the Department's Medical Services Bureau revised the "Injury/Illness Report - Inmate" policy (M206.09) to include a provision requiring medical staff to advise the facility watch commander in the event an inmate reports/alleges that their injuries are the result of force used by a Department employee. This policy was disseminated to all medical personnel on October 26, 2011.*

- XII. Report back on the role of the new jail commanders and how they will be used to reduce jail violence.**

*As reported to the Board on November 1, 2011.*

*Since the implementation of efforts by the CMTF to reduce jail violence and associated use of force incidents, total significant uses of force continue to decline. Two documents are attached relating to force incidents in the jails:*

- Force Used by Month – Significant force vs. Less significant force*
- Force Year to Date – 2007 to 2012*

*The jail commanders continue to work with each custody unit to accomplish the goals set forth by the Sheriff.*

*The jail commanders oversee the operations of the CMTF, comprised of five commanders, eight lieutenants, eight sergeants, and four support staff. The lieutenants, sergeants, and support staff are all items that were removed from critical units within the Department and deployed to this task force.*

*The CMTF Mission is to assess and transform the culture of the custody facilities in order to provide a safe, secure learning environment for our Department personnel and the inmates placed in the Department's care. The CMTF's purpose is to empower Department personnel to provide a level of professionalism and serve the needs of inmates consistent with the Department's "Core Values."*

*The CMTF's responsibilities and goals include promoting community trust, reducing jail violence by changing the deputy culture of the custody environment, encouraging respect based communications with inmates, reviewing and*

RECOMMENDATIONS BY MERRICK BOBB AND OFFICE OF INDEPENDENT REVIEW  
REGARDING THE JAIL SYSTEM

*implementing new training for staff assigned to the jails, preparing and revising all directives/policies necessary to implement Special Counsel Merrick Bobb/OIR recommendations, analyzing force incidents and developing and implementing a custodial career path.*

*The CMTF and Custody Support Services have been working collaboratively to fulfill recommendation requests made by the American Civil Liberties Union (ACLU), Special Counsel Merrick Bobb, the OIR, and the Los Angeles County Board of Supervisors, which pertain to the Jails.*

*The eight CMTF lieutenants work directly in accomplishing the goals set forth by the Sheriff and commanders. The eight CMTF sergeants are comprised as a jail force "roll-out" team (CFRT) who oversee, mentor and review all significant force cases that meet a particular criterion, yet do not rise to the level of an IAB investigation.*

- XIII. Sheriff to work with the Chief Executive Office to immediately study the feasibility of purchasing officer worn video cameras for all custody personnel to use, to identify potential funding for this purpose, and develop appropriate policies and procedures for the use of these cameras. Policies should include a requirement that custody personnel record all interactions with inmates, including Title 15 checks, any movement throughout the jail facilities and any use of force. Each failure to record or immediately report any use of force against inmates must be appropriately disciplined.**

*The Department conducted a six month "Proof of Concept" in order to determine whether there is a practical use for Personal Video Recording Devices (PVRD) in Custody Operations Divisions.*

*The Department received and issued 30 PVRD's for the pilot program. The CMTF drafted a guideline, and conducted training for the volunteer deputies involved in the program. The PVRD's were worn by deputies interacting with inmates at MCJ and TTCF. The Department conducted testing of PVRD models from two different manufacturers. The pilot program, which began on February 26, 2012, was completed on August 3, 2012. Attached is a report on the preliminary findings from this pilot program.*

- XIV. Consider the feasibility of targeted and random undercover sting operations performed in custody facilities to ensure deputies are working within policy.**



RECOMMENDATIONS BY MERRICK BOBB AND OFFICE OF INDEPENDENT REVIEW  
REGARDING THE JAIL SYSTEM

*As reported in closed session.*

*The Sheriff discussed this motion during the November 1, 2011, closed session meeting.*

**XV. Consider a “roll-out team” to investigate when there is a use of force in a custody facility.**

*Recommendation implemented.*

*Beginning November 2011, the Department created the CFRT, comprised of eight sergeants and a lieutenant, who are tasked with responding to selected custody facility force incidents.*

*The CMTF created set criteria that mandate facility watch commanders to contact the CFRT and request a response. The CFRT sergeant will oversee and assist in the force documentation for the facility. In the course of reviewing the incident, the CFRT sergeant shall give specific direction to the handling supervisor. If any policy violations are discovered, the CFRT will immediately assume responsibility of the force investigation and initiate an IAB investigation.*

*All incidents requiring a CFRT response will be reviewed by a newly formed CFRC comprised of three commanders assigned to Custody Division. The CFRC has the authority to order additional investigation, make recommendations, or request an IAB investigation if there appears to be a possible violation of Department policy. Since inception (November, 2011), the CFRT has been notified/consulted on 164 incidents and has responded to 89. Year to date in 2012, the CFRT has been notified/consulted on 136 incidents and has responded to 77. The remaining 59 cases did not meet the CFRT response criteria.*

**XVI. Report back in 30 days on the hiring standards for deputy sheriffs and how they changed during the last hiring push.**

*Recommendation completed - a full report on the hiring standards was provided in the November 1, 2011, letter.*

**XVII. Consider a two-track career path for deputies, patrol deputies and custody deputies.**

*Feasibility study is ongoing.*

RECOMMENDATIONS BY MERRICK BOBB AND OFFICE OF INDEPENDENT REVIEW  
REGARDING THE JAIL SYSTEM

*On December 16, 2011, the CMTF concluded an extensive two-month study which analyzed different methods of implementing a two-track career path within the Department. Study results and CMTF recommendations have been presented to the CEO, ALADS, PPOA, and the Public Safety Cluster Agenda Review meeting on February 8, 2012.*

*The Department formed a subject matter expert working group to update the current sergeant and lieutenant classifications for the Dual Track Career Path proposal, and is also working with the CEOs Classification Unit regarding its implementation. The CMTF continues to conduct informational meetings concerning the proposal with the CEO, ALADS, and PPOA.*

**XVIII. Review existing policy of assigning new deputies to custody functions, specifically, the length of time spent in custody and the hiring trend as its primary determining factor, and revise the policy to reduce the length of time deputies serve in custody.**

*On October 28, 2011, the Department authorized custody personnel to initiate extensions if they desire to remain in their current assignment. As of August 17, 2012, 496 deputies have taken advantage of this offer, which will ultimately cause a reduction of time that deputies will serve in a custody assignment.*

*As noted in the above item, recommendations for a two-track career path were presented to the CEO, ALADS, Professional Peace Officers Association, and the Public Safety CARs meeting on February 8, 2012, which will reduce the length of time deputies, serve in custody.*

## CAMERA PROJECT STATUS REPORT

9/17/2012

MCJ

| MEN CENTRAL JAIL | CAMERAS REQUIRED | INSTALLED  | NEEDED   |
|------------------|------------------|------------|----------|
| 1750 FLOOR       | 42               | 42         | 0        |
| 2000 FLOOR       | 139              | 139        | 0        |
| 3000 FLOOR       | 146              | 146        | 0        |
| 4000 FLOOR       | 97               | 97         | 0        |
| 5000 FLOOR       | 42               | 42         | 0        |
| 9000 FLOOR       | 24               | 24         | 0        |
| 6000 FLOOR       | 25               | 25         | 0        |
| 7000 FLOOR       | 23               | 23         | 0        |
| 8000 FLOOR       | 29               | 29         | 0        |
| PAROLE           | 36               | 36         | 0        |
| OLD IRC          | 24               | 24         | 0        |
| BASEMENT/KITCHEN | 55               | 55         | 0        |
| VISITING         | 23               | 23         | 0        |
| <b>TOTAL:</b>    | <b>705</b>       | <b>705</b> | <b>0</b> |

## TTCF

|                           | CAMERAS REQUIRED | INSTALLED  | NEEDED     |
|---------------------------|------------------|------------|------------|
| <b>TOWER 1</b>            |                  |            |            |
| LEVEL 1                   | 49               | 0          | 49         |
| LEVEL 2                   | 36               | 24         | 12         |
| LEVEL 3                   | 58               | 58         | 0          |
| LEVEL 4                   | 58               | 58         | 0          |
| LEVEL 5                   | 58               | 58         | 0          |
| LEVEL 6                   | 58               | 58         | 0          |
| LEVEL 7                   | 58               | 56         | 2          |
| <b>TOWER 2</b>            |                  |            | 0          |
| LEVEL 1                   | 48               | 22         | 26         |
| LEVEL 2                   | 28               | 19         | 9          |
| LEVEL 3                   | 64               | 64         | 0          |
| LEVEL 4                   | 58               | 58         | 0          |
| LEVEL 5                   | 58               | 58         | 0          |
| LEVEL 6                   | 58               | 58         | 0          |
| LEVEL 7                   | 60               | 58         | 2          |
| <b>TOTAL TWIN TOWERS:</b> | <b>749</b>       | <b>649</b> | <b>100</b> |
| <b>IRC</b>                |                  |            |            |
| LEVEL 1                   | 48               | 34         | 14         |
| LEVEL 2                   | 57               | 32         | 25         |
| <b>TOTAL IRC:</b>         | <b>105</b>       | <b>66</b>  | <b>39</b>  |
| <b>GRAND TOTAL</b>        | <b>854</b>       | <b>715</b> | <b>139</b> |



## LOS ANGELES COUNTY SHERIFF'S DEPARTMENT

### FORCE USED BY MONTH SIGNIFICANT VS LESS SIGNIFICANT

#### 2011

| CUSTODY DIVISION   | January 2011 |                |           | February 2011 |                |           | March 2011 |                |           | April 2011 |                |           | May 2011  |                |           | June 2011 |                |           |
|--------------------|--------------|----------------|-----------|---------------|----------------|-----------|------------|----------------|-----------|------------|----------------|-----------|-----------|----------------|-----------|-----------|----------------|-----------|
|                    | Sig Force    | Less Sig Force | Total     | Sig Force     | Less Sig Force | Total     | Sig Force  | Less Sig Force | Total     | Sig Force  | Less Sig Force | Total     | Sig Force | Less Sig Force | Total     | Sig Force | Less Sig Force | Total     |
| CRDF               | 6            | 2              | 8         | 8             | 5              | 13        | 4          | 4              | 8         | 2          | 2              | 4         | 5         | 2              | 7         | 10        | 1              | 11        |
| CST                | 0            | 0              | 0         | 0             | 0              | 0         | 0          | 0              | 0         | 0          | 0              | 0         | 0         | 0              | 0         | 0         | 0              | 0         |
| EAST FACILITY      | 2            | 3              | 5         | 4             | 0              | 4         | 0          | 0              | 0         | 0          | 0              | 0         | 1         | 1              | 0         | 1         | 1              | 1         |
| IRC                | 9            | 3              | 12        | 9             | 1              | 10        | 12         | 1              | 13        | 10         | 0              | 10        | 8         | 6              | 14        | 8         | 2              | 10        |
| MEN'S CENTRAL JAIL | 16           | 1              | 17        | 19            | 1              | 20        | 11         | 1              | 12        | 9          | 2              | 11        | 17        | 5              | 22        | 10        | 3              | 13        |
| MIRA LOMA FACILITY | 0            | 0              | 0         | 0             | 2              | 2         | 1          | 0              | 1         | 0          | 0              | 0         | 0         | 0              | 0         | 0         | 0              | 0         |
| NCCF               | 6            | 6              | 12        | 1             | 3              | 4         | 5          | 2              | 7         | 2          | 1              | 3         | 2         | 3              | 5         | 7         | 4              | 11        |
| NORTH FACILITY     |              |                |           |               |                |           |            |                |           |            |                |           |           |                |           |           |                |           |
| SOUTH FACILITY     | 0            | 1              | 1         | 0             | 0              | 0         | 2          | 0              | 2         | 1          | 0              | 1         | 2         | 0              | 2         | 0         | 0              | 0         |
| TWIN TOWERS        | 5            | 2              | 7         | 8             | 1              | 9         | 3          | 2              | 5         | 7          | 1              | 8         | 9         | 0              | 9         | 6         | 2              | 8         |
| <b>TOTALS</b>      | <b>44</b>    | <b>18</b>      | <b>62</b> | <b>49</b>     | <b>13</b>      | <b>62</b> | <b>38</b>  | <b>10</b>      | <b>48</b> | <b>31</b>  | <b>6</b>       | <b>37</b> | <b>43</b> | <b>17</b>      | <b>60</b> | <b>41</b> | <b>13</b>      | <b>54</b> |

| CUSTODY DIVISION   | July 2011 |                |           | August 2011 |                |           | September 2011 |                |           | October 2011 |                |           | November 2011 |                |           | December 2011 |                |           |
|--------------------|-----------|----------------|-----------|-------------|----------------|-----------|----------------|----------------|-----------|--------------|----------------|-----------|---------------|----------------|-----------|---------------|----------------|-----------|
|                    | Sig Force | Less Sig Force | Total     | Sig Force   | Less Sig Force | Total     | Sig Force      | Less Sig Force | Total     | Sig Force    | Less Sig Force | Total     | Sig Force     | Less Sig Force | Total     | Sig Force     | Less Sig Force | Total     |
| CRDF               | 7         | 2              | 9         | 6           | 2              | 8         | 6              | 1              | 7         | 3            | 1              | 4         | 4             | 4              | 8         | 2             | 4              | 6         |
| CST                | 0         | 0              | 0         | 0           | 0              | 0         | 0              | 0              | 0         | 0            | 0              | 0         | 0             | 0              | 0         | 1             | 1              | 2         |
| EAST FACILITY      | 0         | 1              | 1         | 1           | 0              | 1         | 3              | 2              | 5         | 0            | 0              | 0         | 0             | 3              | 3         | 1             | 0              | 1         |
| IRC                | 6         | 2              | 8         | 5           | 1              | 6         | 12             | 4              | 16        | 1            | 4              | 5         | 2             | 2              | 4         | 2             | 0              | 2         |
| MEN'S CENTRAL JAIL | 17        | 3              | 20        | 17          | 0              | 17        | 10             | 2              | 12        | 4            | 5              | 9         | 6             | 6              | 12        | 3             | 4              | 7         |
| MIRA LOMA FACILITY | 0         | 0              | 0         | 0           | 0              | 0         | 0              | 0              | 0         | 0            | 0              | 0         | 0             | 0              | 0         | 0             | 0              | 0         |
| NCCF               | 5         | 3              | 8         | 5           | 1              | 6         | 2              | 3              | 5         | 4            | 1              | 5         | 3             | 3              | 6         | 1             | 4              | 5         |
| NORTH FACILITY     |           |                |           |             |                |           |                |                |           |              |                |           |               |                |           |               |                |           |
| SOUTH FACILITY     | 2         | 0              | 2         | 0           | 0              | 0         | 2              | 0              | 2         | 1            | 0              | 1         | 1             | 1              | 2         | 0             | 0              | 0         |
| TWIN TOWERS        | 7         | 1              | 8         | 5           | 1              | 6         | 4              | 4              | 8         | 7            | 4              | 11        | 3             | 5              | 8         | 4             | 3              | 7         |
| <b>TOTALS</b>      | <b>44</b> | <b>12</b>      | <b>56</b> | <b>39</b>   | <b>5</b>       | <b>44</b> | <b>39</b>      | <b>16</b>      | <b>55</b> | <b>20</b>    | <b>15</b>      | <b>35</b> | <b>19</b>     | <b>24</b>      | <b>43</b> | <b>14</b>     | <b>16</b>      | <b>30</b> |

#### 2012

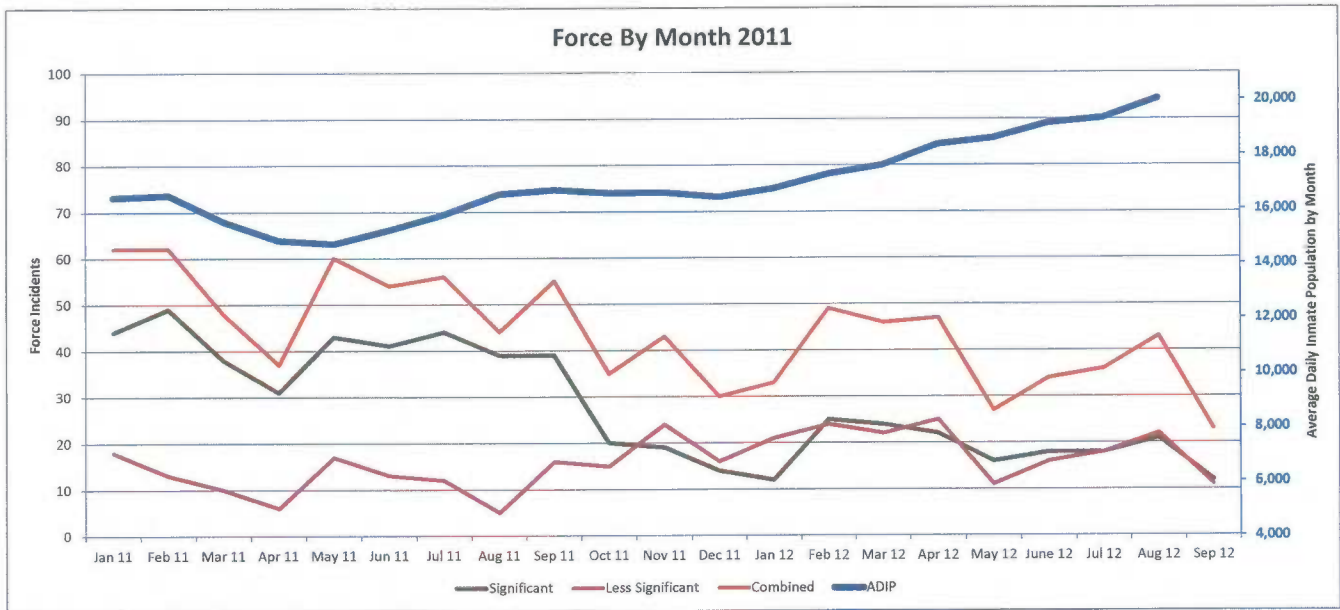
| CUSTODY DIVISION   | January 2012 |                |           | February 2012 |                |           | March 2012 |                |           | April 2012 |                |           | May 2012  |                |           | June 2012 |                |           |
|--------------------|--------------|----------------|-----------|---------------|----------------|-----------|------------|----------------|-----------|------------|----------------|-----------|-----------|----------------|-----------|-----------|----------------|-----------|
|                    | Sig Force    | Less Sig Force | Total     | Sig Force     | Less Sig Force | Total     | Sig Force  | Less Sig Force | Total     | Sig Force  | Less Sig Force | Total     | Sig Force | Less Sig Force | Total     | Sig Force | Less Sig Force | Total     |
| CRDF               | 2            | 6              | 8         | 1             | 3              | 4         | 1          | 2              | 3         | 2          | 6              | 8         | 2         | 2              | 1         | 1         | 1              | 2         |
| CST                | 0            | 0              | 0         | 3             | 3              | 3         | 1          | 1              | 2         | 1          | 1              | 2         |           | 1              | 1         |           |                | 0         |
| EAST FACILITY      | 1            | 2              | 3         | 1             | 1              | 2         | 1          | 1              | 2         | 1          | 1              | 2         | 2         | 1              | 3         | 2         | 1              | 1         |
| IRC                | 1            | 3              | 4         | 2             | 4              | 6         | 1          | 8              | 9         | 3          | 5              | 8         | 1         | 1              | 2         | 2         | 2              | 4         |
| MEN'S CENTRAL JAIL | 4            | 6              | 10        | 14            | 6              | 20        | 4          | 5              | 9         | 8          | 4              | 12        | 4         | 3              | 7         | 4         | 7              | 11        |
| MIRA LOMA FACILITY | 0            | 0              | 0         |               |                |           |            |                |           |            |                |           |           |                |           | 1         | 1              | 1         |
| NCCF               | 1            | 3              | 4         | 2             | 2              | 4         | 6          | 1              | 7         | 2          | 3              | 5         | 3         | 3              | 6         | 5         | 2              | 7         |
| NORTH FACILITY     | 0            | 0              | 0         |               |                |           |            |                |           |            |                |           |           |                |           |           |                | 0         |
| SOUTH FACILITY     | 1            | 0              | 1         |               | 2              | 2         | 2          | 2              | 2         |            |                |           | 1         | 1              | 2         |           |                | 0         |
| TWIN TOWERS        | 2            | 1              | 3         | 2             | 6              | 8         | 8          | 4              | 12        | 5          | 6              | 11        | 3         | 1              | 4         | 5         | 3              | 8         |
| <b>TOTALS</b>      | <b>12</b>    | <b>21</b>      | <b>33</b> | <b>25</b>     | <b>24</b>      | <b>49</b> | <b>24</b>  | <b>22</b>      | <b>46</b> | <b>22</b>  | <b>25</b>      | <b>47</b> | <b>16</b> | <b>11</b>      | <b>27</b> | <b>18</b> | <b>16</b>      | <b>34</b> |

| CUSTODY DIVISION   | July 2012 |                |           | August 2012 |                |           | September 2012 |                |           | October 2012 |                |          | November 2012 |                |          | December 2012 |                |          |
|--------------------|-----------|----------------|-----------|-------------|----------------|-----------|----------------|----------------|-----------|--------------|----------------|----------|---------------|----------------|----------|---------------|----------------|----------|
|                    | Sig Force | Less Sig Force | Total     | Sig Force   | Less Sig Force | Total     | Sig Force      | Less Sig Force | Total     | Sig Force    | Less Sig Force | Total    | Sig Force     | Less Sig Force | Total    | Sig Force     | Less Sig Force | Total    |
| CRDF               | 1         |                | 1         | 1           | 3              | 4         | 1              | 1              | 2         |              |                | 0        |               |                | 0        |               |                | 0        |
| CST                |           |                | 0         |             |                | 0         |                |                | 0         |              |                | 0        |               |                | 0        |               |                | 0        |
| EAST FACILITY      | 1         | 2              | 3         |             |                | 0         | 1              | 1              | 1         |              |                | 0        |               |                | 0        |               |                | 0        |
| IRC                | 3         | 2              | 5         | 4           | 3              | 7         | 3              | 2              | 5         |              |                | 0        |               |                | 0        |               |                | 0        |
| MEN'S CENTRAL JAIL | 4         | 6              | 10        | 5           | 3              | 8         | 3              | 1              | 4         |              |                | 0        |               |                | 0        |               |                | 0        |
| MIRA LOMA FACILITY |           |                | 0         |             |                | 0         |                |                | 0         |              |                | 0        |               |                | 0        |               |                | 0        |
| NCCF               | 2         | 1              | 3         | 3           | 2              | 5         |                | 5              | 5         |              |                | 0        |               |                | 0        |               |                | 0        |
| NORTH FACILITY     |           |                | 0         |             |                | 0         |                |                | 0         |              |                | 0        |               |                | 0        |               |                | 0        |
| SOUTH FACILITY     | 1         | 1              | 2         | 1           | 1              | 2         |                |                | 0         |              |                | 0        |               |                | 0        |               |                | 0        |
| TWIN TOWERS        | 6         | 6              | 12        | 7           | 10             | 17        | 4              | 2              | 6         |              |                | 0        |               |                | 0        |               |                | 0        |
| <b>TOTALS</b>      | <b>18</b> | <b>18</b>      | <b>36</b> | <b>21</b>   | <b>22</b>      | <b>43</b> | <b>12</b>      | <b>11</b>      | <b>23</b> | <b>0</b>     | <b>0</b>       | <b>0</b> | <b>0</b>      | <b>0</b>       | <b>0</b> | <b>0</b>      | <b>0</b>       | <b>0</b> |

| CUSTODY DIVISION   | 2011 Totals |                |            | 2012 YTD Totals |                |            | 2012 Projection** |                |            | Projected % Change** |                |             |
|--------------------|-------------|----------------|------------|-----------------|----------------|------------|-------------------|----------------|------------|----------------------|----------------|-------------|
|                    | Sig Force   | Less Sig Force | Total      | Sig Force       | Less Sig Force | Total      | Sig Force         | Less Sig Force | Total      | Sig Force            | Less Sig Force | Total       |
| CRDF               | 63          | 30             | 93         | 12              | 22             | 34         | 17                | 31             | 48         | -73%                 | 3%             | -48%        |
| CST                | 1           | 1              | 2          | 5               | 3              | 8          | 7                 | 4              | 11         | 600%                 | 300%           | 450%        |
| EAST FACILITY      | 11          | 11             | 22         | 8               | 8              | 16         | 11                | 11             | 22         | 0%                   | 0%             | 0%          |
| IRC                | 84          | 26             | 110        | 20              | 30             | 50         | 28                | 42             | 70         | -67%                 | 62%            | -36%        |
| MEN'S CENTRAL JAIL | 139         | 33             | 172        | 50              | 41             | 91         | 70                | 58             | 128        | -50%                 | 76%            | -26%        |
| MIRA LOMA FACILITY | 1           | 2              | 3          | 1               | 0              | 1          | 1                 | 0              | 1          | 0%                   | -100%          | -67%        |
| NCCF               | 43          | 34             | 77         | 24              | 22             | 46         | 34                | 31             | 65         | -21%                 | -9%            | -16%        |
| NORTH FACILITY     | 0           | 0              | 0          | 0               | 0              | 0          | 0                 | 0              | 0          | N/C                  | N/C            | N/C         |
| SOUTH FACILITY     | 11          | 2              | 13         | 6               | 5              | 11         | 8                 | 7              | 15         | -27%                 | 250%           | 15%         |
| TWIN TOWERS        | 68          | 26             | 94         | 42              | 39             | 81         | 59                | 55             | 114        | -13%                 | 112%           | 21%         |
| <b>TOTALS</b>      | <b>421</b>  | <b>165</b>     | <b>586</b> | <b>168</b>      | <b>170</b>     | <b>338</b> | <b>235</b>        | <b>239</b>     | <b>474</b> | <b>-44%</b>          | <b>45%</b>     | <b>-19%</b> |

\*Totals presented are as of 09/16/2012

\*\*Projection based on 2012 data YTD and is only an estimate.



Reportable force is *less significant* when it is limited to any of the following and there is no injury or complaint of pain nor any indication of misconduct:

- Searching and handcuffing techniques resisted by the suspect,
- Department-approved control holds, come-along, or take down,
- Use of Oleoresin Capsicum spray, Freeze +P or Deep Freeze aerosols, or Oleoresin Capsicum powder from a Pepperball projectile when the suspect is not struck by a Pepperball projectile.

Reportable force is *significant* when it involves any of the following:

- Suspect injury resulting from use of force,
- Complaint of pain or injury resulting from use of force,
- Indication or allegation of misconduct in the application of force,
- Any application of force that is greater than a Department-approved control hold, come-along, or take down. This includes the activation of the electronic immobilization belt or the use of the Total Appendage Restraint Procedure (TARP).

\*Totals presented are as of 09/17/2012

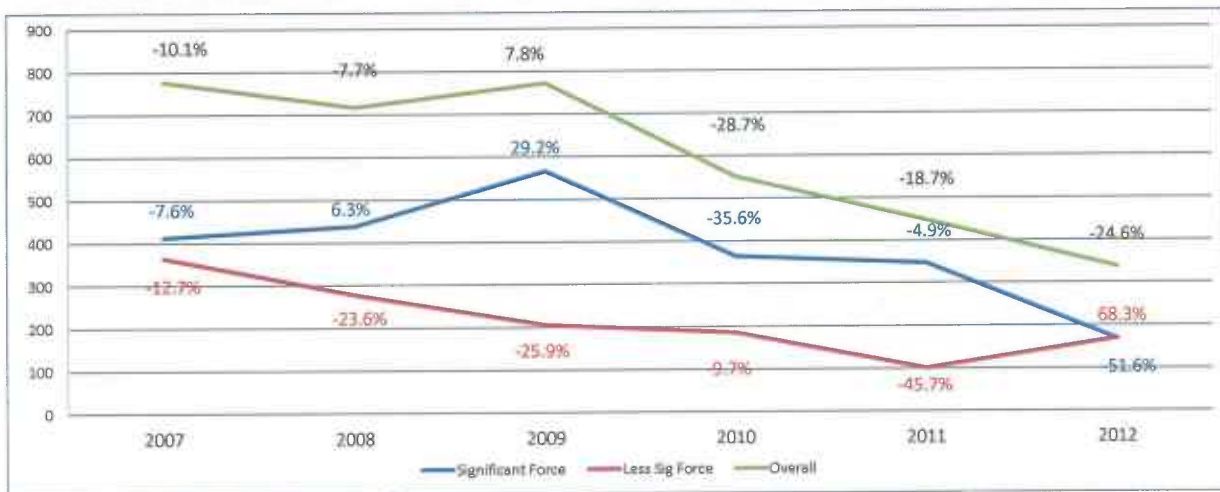


## LOS ANGELES COUNTY SHERIFF'S DEPARTMENT FORCE USED YTD 2007-2012

| CUSTODY DIVISION   | January 1 - September 16, 2007 |                |            | January 1 - September 16, 2008 |                |            | January 1 - September 16, 2009 |                |            | January 1 - September 16, 2010 |                |            |
|--------------------|--------------------------------|----------------|------------|--------------------------------|----------------|------------|--------------------------------|----------------|------------|--------------------------------|----------------|------------|
|                    | Significant Force              | Less Sig Force | Total      | Significant Force              | Less Sig Force | Total      | Significant Force              | Less Sig Force | Total      | Significant Force              | Less Sig Force | Total      |
| CRDF               | 39                             | 22             | 61         | 30                             | 30             | 60         | 30                             | 21             | 51         | 41                             | 25             | 66         |
| CST                | 3                              | 2              | 5          | 2                              | 0              | 2          |                                |                | 0          |                                |                | 0          |
| EAST FACILITY      | 8                              | 11             | 19         | 1                              | 6              | 7          | 12                             | 14             | 26         | 4                              | 9              | 13         |
| IRC                | 123                            | 75             | 198        | 124                            | 63             | 187        | 119                            | 42             | 161        | 73                             | 32             | 105        |
| MEN'S CENTRAL JAIL | 96                             | 159            | 255        | 126                            | 73             | 199        | 198                            | 53             | 251        | 79                             | 34             | 113        |
| MIRA LOMA FACILITY | 2                              | 5              | 7          | 3                              | 3              | 6          | 1                              | 0              | 1          | 4                              | 1              | 5          |
| NCCF               | 28                             | 29             | 57         | 25                             | 18             | 43         | 30                             | 17             | 47         | 40                             | 35             | 75         |
| NORTH FACILITY     | 12                             | 14             | 26         | 16                             | 12             | 28         | 4                              | 1              | 5          |                                |                | 0          |
| SOUTH FACILITY     |                                |                | 0          | 8                              | 4              | 12         | 17                             | 1              | 18         | 9                              | 4              | 13         |
| TWIN TOWERS        | 102                            | 47             | 149        | 104                            | 69             | 173        | 156                            | 57             | 213        | 115                            | 46             | 161        |
| <b>TOTAL</b>       | <b>413</b>                     | <b>364</b>     | <b>777</b> | <b>439</b>                     | <b>278</b>     | <b>717</b> | <b>567</b>                     | <b>206</b>     | <b>773</b> | <b>365</b>                     | <b>186</b>     | <b>551</b> |

| CUSTODY DIVISION   | January 1 - September 16, 2011 |                |            |                      | January 1 - September 16, 2012 |                |            |                      |
|--------------------|--------------------------------|----------------|------------|----------------------|--------------------------------|----------------|------------|----------------------|
|                    | Significant Force              | Less Sig Force | Total      | Diff. from '10 - '11 | Significant Force              | Less Sig Force | Total      | Diff. from '11 - '12 |
| CRDF               | 50                             | 20             | 70         | 6.06%                | 12                             | 22             | 34         | -51.43%              |
| CST                |                                |                | 0          |                      | 5                              | 3              | 8          |                      |
| EAST FACILITY      | 8                              | 8              | 16         | 23.08%               | 8                              | 8              | 16         | 0.00%                |
| IRC                | 77                             | 17             | 94         | -10.48%              | 20                             | 30             | 50         | -46.81%              |
| MEN'S CENTRAL JAIL | 118                            | 17             | 135        | 19.47%               | 50                             | 41             | 91         | -32.59%              |
| MIRA LOMA FACILITY | 1                              | 2              | 3          |                      | 1                              | 1              | 2          | 0.00%                |
| NCCF               | 34                             | 24             | 58         | -22.67%              | 24                             | 22             | 46         | -20.69%              |
| NORTH FACILITY     | 0                              | 0              | 0          | CLOSED               |                                |                | 0          | CLOSED               |
| SOUTH FACILITY     | 8                              | 1              | 9          | 0.00%                | 6                              | 5              | 11         | 22.22%               |
| TWIN TOWERS        | 51                             | 12             | 63         | -60.87%              | 42                             | 39             | 81         | 28.57%               |
| <b>TOTAL</b>       | <b>347</b>                     | <b>101</b>     | <b>448</b> | <b>-18.69%</b>       | <b>168</b>                     | <b>170</b>     | <b>338</b> | <b>-24.55%</b>       |

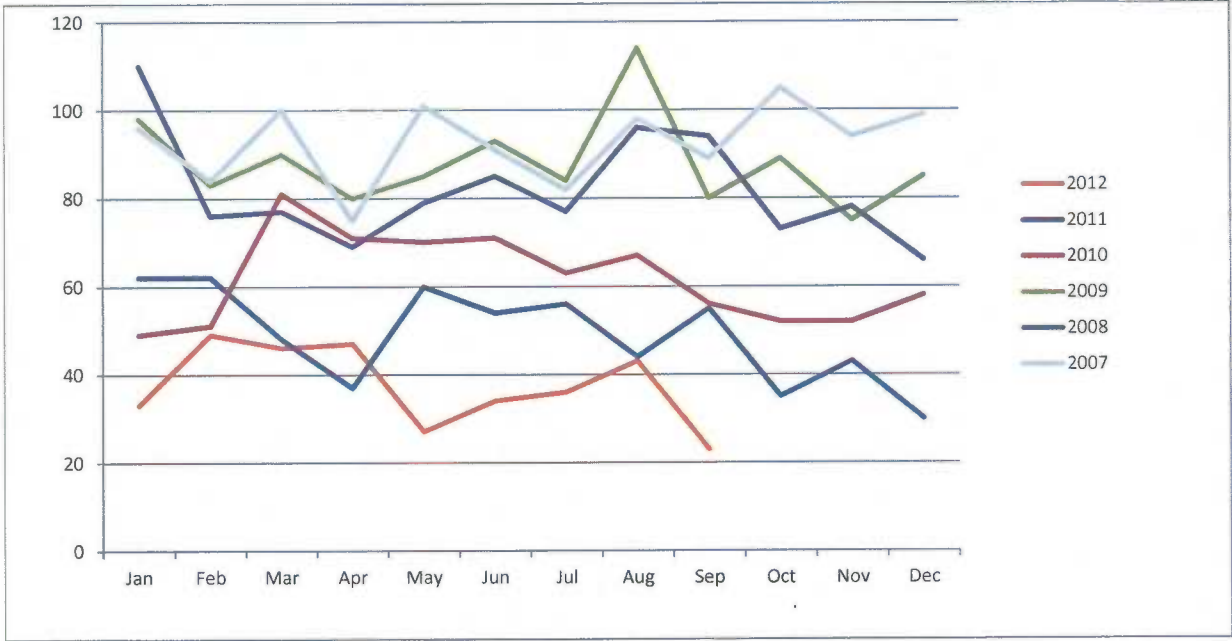
\*Totals presented are as of 09/16/2012





## LOS ANGELES COUNTY SHERIFF'S DEPARTMENT

### FORCE USED YTD 2007-2012



|                       | 2007            | 2008            | 2009            | 2010            | 2011            | 2012            |
|-----------------------|-----------------|-----------------|-----------------|-----------------|-----------------|-----------------|
| Month                 | Total Incidents | Total Incidents | Total Incidents | Total Incidents | Total Incidents | Total Incidents |
| Jan                   | 96              | 110             | 98              | 49              | 62              | 33              |
| Feb                   | 84              | 76              | 83              | 51              | 62              | 49              |
| Mar                   | 100             | 77              | 90              | 81              | 48              | 46              |
| Apr                   | 75              | 69              | 80              | 71              | 37              | 47              |
| May                   | 101             | 79              | 85              | 70              | 60              | 27              |
| Jun                   | 91              | 85              | 93              | 71              | 54              | 34              |
| Jul                   | 82              | 77              | 84              | 63              | 56              | 36              |
| Aug                   | 98              | 96              | 114             | 67              | 44              | 43              |
| Sep                   | 89              | 94              | 80              | 56              | 55              | 23              |
| Oct                   | 105             | 73              | 89              | 52              | 35              |                 |
| Nov                   | 94              | 78              | 75              | 52              | 43              |                 |
| Dec                   | 99              | 66              | 85              | 58              | 30              |                 |
| Grand Total           | 1114            | 980             | 1056            | 741             | 586             | 338             |
| Percentage Difference |                 | -12.03%         | 7.76%           | -29.83%         | -20.92%         | -24.55%         |

2012 Numbers reflect the difference between the same time span from 2011.

\*Totals presented are as of 09/16/2012

**CUSTODY OPERATIONS DIVISION**

**PERSONAL VIDEO RECORDING DEVICE  
PRELIMINARY FINDINGS**



**SHERIFF LEROY D. BACA**

**Los Angeles County Sheriff's Department**



## **EXECUTIVE BRIEF**

The Los Angeles County Sheriff's Department (LASD) operates the largest county jail system in the nation, with an inmate population ranging from 15,000 to 20,000. Over 70 percent of incarcerated inmates are documented gang members, and frequently pose an immediate threat to Sheriff's personnel and other inmates.

In response to recommendations by the Board of Supervisors, the Sheriff's Department pursued a Personal Video Recording Device (PVRD) proof of concept project in Custody Division. The PVRD proof of concept project equipped line personnel in three custody facilities with a personally worn video/audio recording device. One of the goals of the project is to provide an irrefutable record (video and audio recording) of force and/or contact with disruptive inmates. It is believed that high quality audio/video recordings of such incidents will serve to provide indisputable evidence regarding circumstances leading to negative encounters between Sheriff's personnel and inmates.

Recorded video files will be stored for a period of 25 months on a secured network server. The use of security procedures and anti-tampering technologies will ensure the veracity of recorded evidence.

## **PROOF OF CONCEPT**

A *Request for Information* (RFI) was solicited by ISD and LASD experts for the purposes of identifying industry leaders in PVRD technologies. Subsequently, a six month no-cost/no obligation evaluation commenced on or about February 26, 2012, and ended on August 3, 2012. The evaluation encompassed a real world deployment of various types of PVRD technologies to identify the following:

- Minimum specifications for PVRDs to meet with LASD requirements
- Infrastructure requirements
- Identification of PVRD strengths and weaknesses
- Identification of operational issues
- Identification of operational best practices
- Development of policies and procedures

Various PVRD manufacturers provided samples of their devices at no cost or obligation to LASD for use in this proof of concept evaluation. The intent of the evaluation was to employ PVRDs, at no cost, at three custody facilities. This approach would ensure the PVRDs are tested and evaluated in a practical manner. This approach would ensure LASD experts are able to establish appropriate requirements for a PVRD solution if determined to be a viable option.

During the six month evaluation period, the use of PVRDs in a custody environment was expected to achieve the following results:

- Provide documented recordings of force incidents
- Provide documented recordings of incidents of interest to the Department
- A reduction in liabilities due to the recording of incidents
- A deterrent effect on inmates and staff created by the use of PVRDs

### **PVRD MANUFACTURERS**

There are a large number of manufactures and distributors of PRVDs in the United States. Many of the PVRDs, on the market, were designed for commercial use and are not compatible with sustained service in a law enforcement environment. The purpose of this Test and Evaluation (T&E) was not to test all PVRDs on the market; rather the purpose of the assessment was to test the design, durability, reliability and usability of two representative types of PVRDs designed specifically for law enforcement applications. Data from this six month T&E was utilized to define potential specifications, requirements and feasibility for a PVRD solution for LASD. The below listed PVRDs were evaluated pursuant to this project:

#### **A. VIEVU PVR-LE2**

The VIEVU recording system is a singular device approximately the size and configuration of a pager. The device is generally clipped onto the front of a uniform shirt and activated by sliding a small switch which exposes the lens of a camera. The VIEVU will record up to four hours of video footage. Recorded video is downloaded to a desktop computer and videos are managed by proprietary software developed by VieVu.

#### **B. TASER AXON FLEX**

The Taser Axon Flex is a two piece unit comprised of a small camera connected via a cable to a battery pack. The camera is worn on the shoulder or collar while the battery pack is clipped to the belt. The device is activated by the user pushing a button. The Taser Flex has a unique capability in which it has a "recording buffer" capability. This capability allows the unit to continuously record in a buffer for up to 30 seconds. Once the device is activated, by the user, the Taser Flex saves the preceding 30 seconds (prior to the activation) and continues to record until it is turned off. The unit can record up to four hours. Recorded video is downloaded to a desktop computer and videos are managed by proprietary software developed by Taser.

### **INITIAL USER FEEDBACK**

Deputy personnel utilizing the two representative PVRDs provided the above listed feedback, on a weekly basis, via written surveys throughout the six month process. Much of the input was positive in which the devices were described as simple to activate. Quality of the video was generally good when lighting conditions were sufficient. The T&E did bring to light numerous issues with the devices which encompassed a lack of durability, less than ideal mounting positions, limited field of view of the cameras, difficulty with the video management software, video storage issues, downloading issues, etc. Users found that the cameras only recorded about 70 percent of the incidents that they deployed on. In addition, they were only able to successfully download about 60 percent of the incidents they captured. Many differences and similarities were noted between the two types of PVRD devices, to include a commonality in many of the identified challenges towards a large scale deployment.

### **INFRASTRUCTURE LIMITATIONS**

Although the primary purpose of the T&E was to evaluate PVRDs, a significant issue was identified in reference to existing facility infrastructure which was potentially incapable of supporting a deployment of PVRD technology. The PVRDs evaluated, encompass the latest technology while the computer systems utilized at MCJ were antiquated in comparison. During the six month T&E at MCJ, not a single computer at MCJ was capable of downloading recorded video from the PVRDs. LASD staff acquired a single latest generation desktop computer which was utilized to download all video from PVRDs utilized at the facility. For a large scale deployment of PVRDs, a large scale upgrade of desktop computer systems at MCJ and similar facilities would be required. Other potential infrastructure upgrade costs are still to be determined.

### **VIDEO INFRASTRUCTURE**

A limited amount of PVRDs were utilized during the T&E period. These videos were stored on a local video storage drive. If a large scale deployment of PVRDs was initiated, considerations would have to be made for the procurement of dedicated video storage servers for each facility utilizing this technology. Potential video storage server costs are still to be determined.

### **POLICY AND PROCEDURES**

Policies would have to be developed which specifically address PVRD technology. These policies would have to encompass their use, activation, maintenance, downloading capability, viewing rights, evidentiary procedures, training, retention of

video, etc. An encompassing training program would also have to be developed and implemented.

### **UNIONS**

Considerations would have to be made to concerns voiced by employees and their corresponding unions. These concerns include but are not limited to privacy issues, voluntary versus mandatory wear, discipline, viewing rights, etc.

### **COSTS**

The cost of ruggedized PVRDs is approximately \$1,000 - \$2,000 each. Maintenance costs would encompass an additional annual cost of 15-20 percent of the purchase price for each device. The *cost of ownership* for LASD will be considerably higher. An enterprise level use of PVRDs will require the purchase of the individual PVRDs, maintenance costs for the PVRDs, infrastructure upgrades, desktop computer upgrades, the procurement of dedicated video storage servers for each Custody Facility, training costs, etc.

### **PRELIMINARY FINDINGS AND RECOMMENDATIONS**

Although the concept of utilizing PVRDs is still an emerging technology, the use of PVRDs by LASD personnel may have some future validity. The use of PVRDs, when activated, will generally provide an irrefutable record of the occurrences and actions of persons involved in a given incident. Unfortunately, the effectiveness of the PVRD system is compromised by infrastructure limitations, the need for large scale storage servers, a potentially prohibitive cost of ownership, suspect reliability, and other technical considerations. The concept of PVRDs shows enough promise that it should be revisited after the technology has matured further.