



Health Services
LOS ANGELES COUNTY

November 8, 2011

**Los Angeles County
Board of Supervisors**

Gloria Molina
First District

Mark Ridley-Thomas
Second District

Zev Yaroslavsky
Third District

Don Knabe
Fourth District

Michael D. Antonovich
Fifth District

TO: Each Supervisor

FROM: Mitchell H. Katz, M.D.
Director

SUBJECT: **STATUS REPORT ON KEY INDICATORS OF PROGRESS, HOSPITAL OPERATIONS, AND OTHER ISSUES RELATED TO THE TRANSITION TO THE NEW LAC+USC MEDICAL CENTER – PROGRESS REPORT #67 (Agenda Item #S-1, November 8, 2011)**

This is to provide your Board with the bi-monthly report on the status of transitioning to the new LAC+USC Medical Center (LAC+USC). This report is the interim report of Emergency Department (ED) and hospital admission volumes as well as specialty services with trends to include the month of October 2011.

Mitchell H. Katz, M.D.
Director

Hal F. Yee, Jr., M.D., Ph.D.
Chief Medical Officer

John F. Schunhoff, Ph.D.
Chief Deputy Director

Census Trending (ADC includes Psychiatric & Newborn Patients)

The Average Daily Census (ADC) for the month of October was 575 out of 676 licensed beds, an estimated 83% utilization rate (85% occupancy). The census for Medical/Surgical units was 302, an estimated 96% utilization rate (98% occupancy) for October 2011.

Emergency Department (ED) Indicators

Attachment #1 demonstrates the trending of ED registration as well as admissions to both the ED and the hospital. The number of hospital admissions this period was 2,877 which reflects a 0.5% increase from September 2011. ED registration volume increased by 1.8% during this period.

Attachment #2 shows the ADC trends for specialty care areas of OB/GYN, Pediatrics, ICU, Psychiatry, Jail and Burn Units with no significant changes.

If you have any questions or need additional information please contact me or Pete Delgado, LAC+USC Chief Executive Officer at (323) 409-2800.

MHK:PD:bh

Attachments

cc: Chief Executive Office
County Counsel
Executive Office, Board of Supervisors

313 N. Figueroa Street, Suite 912
Los Angeles, CA 90012

Tel: (213) 240-8101
Fax: (213) 481-0503

www.dhs.lacounty.gov

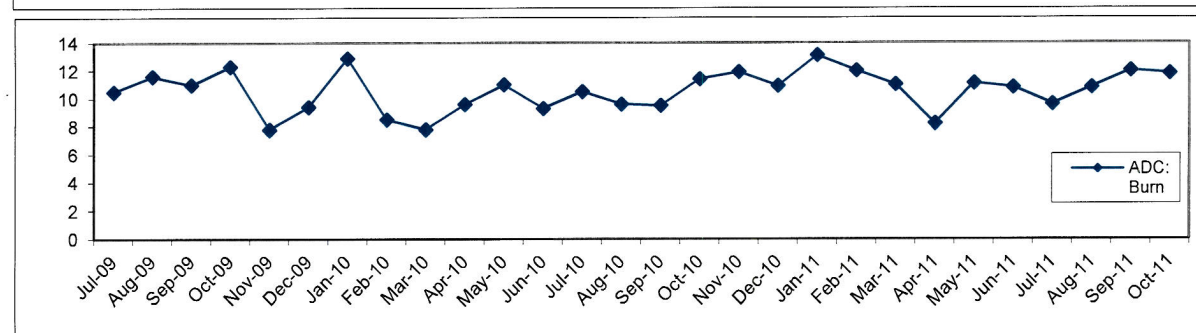
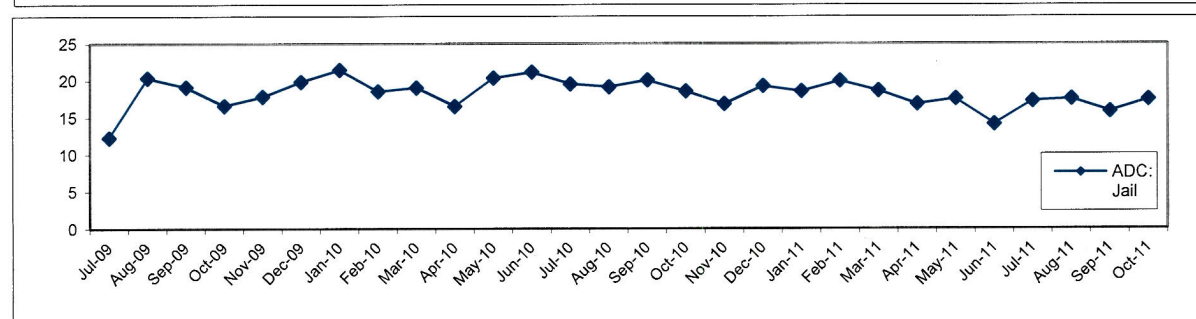
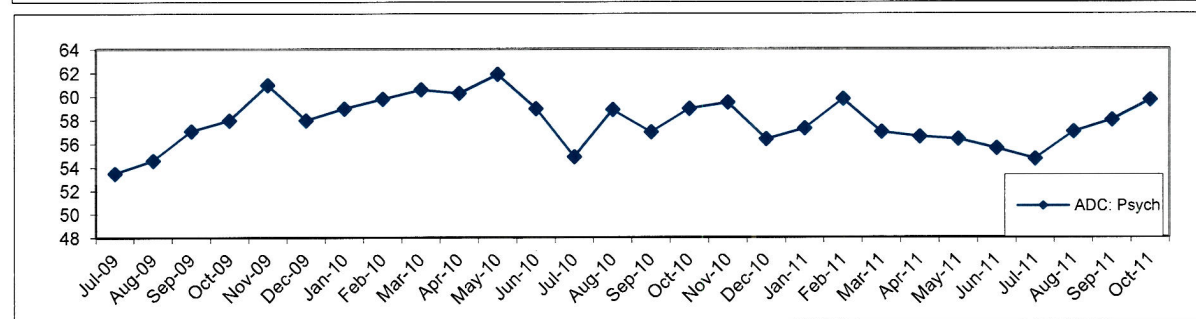
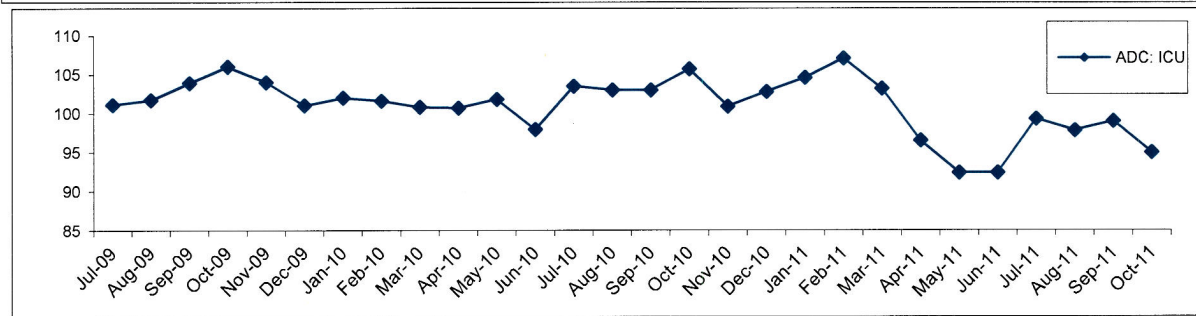
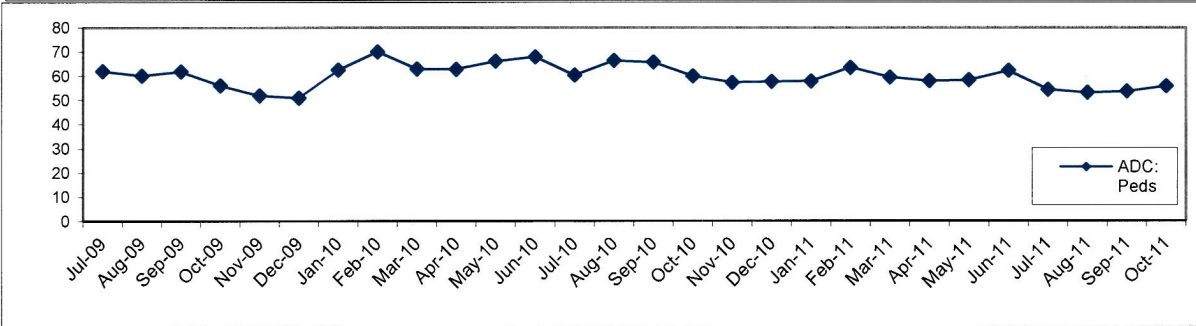
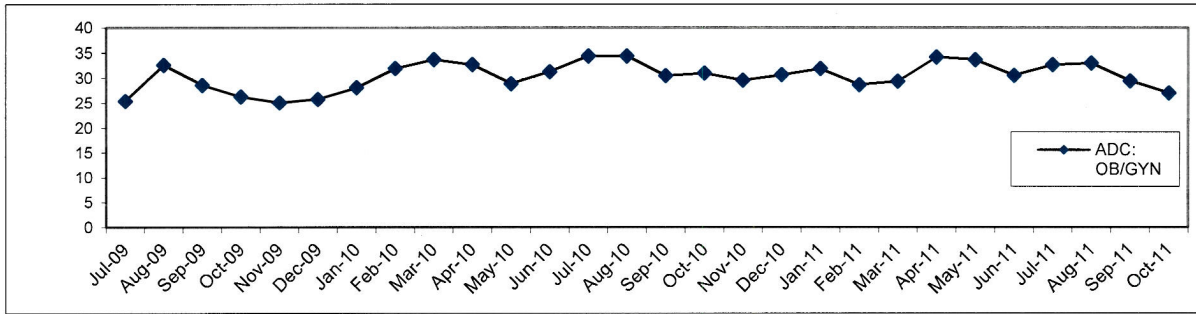
www.dhs.lacounty.gov

To ensure access to high-quality, patient-centered, cost-effective health care to Los Angeles County residents through direct services at DHS facilities and through collaboration with community and university partners.

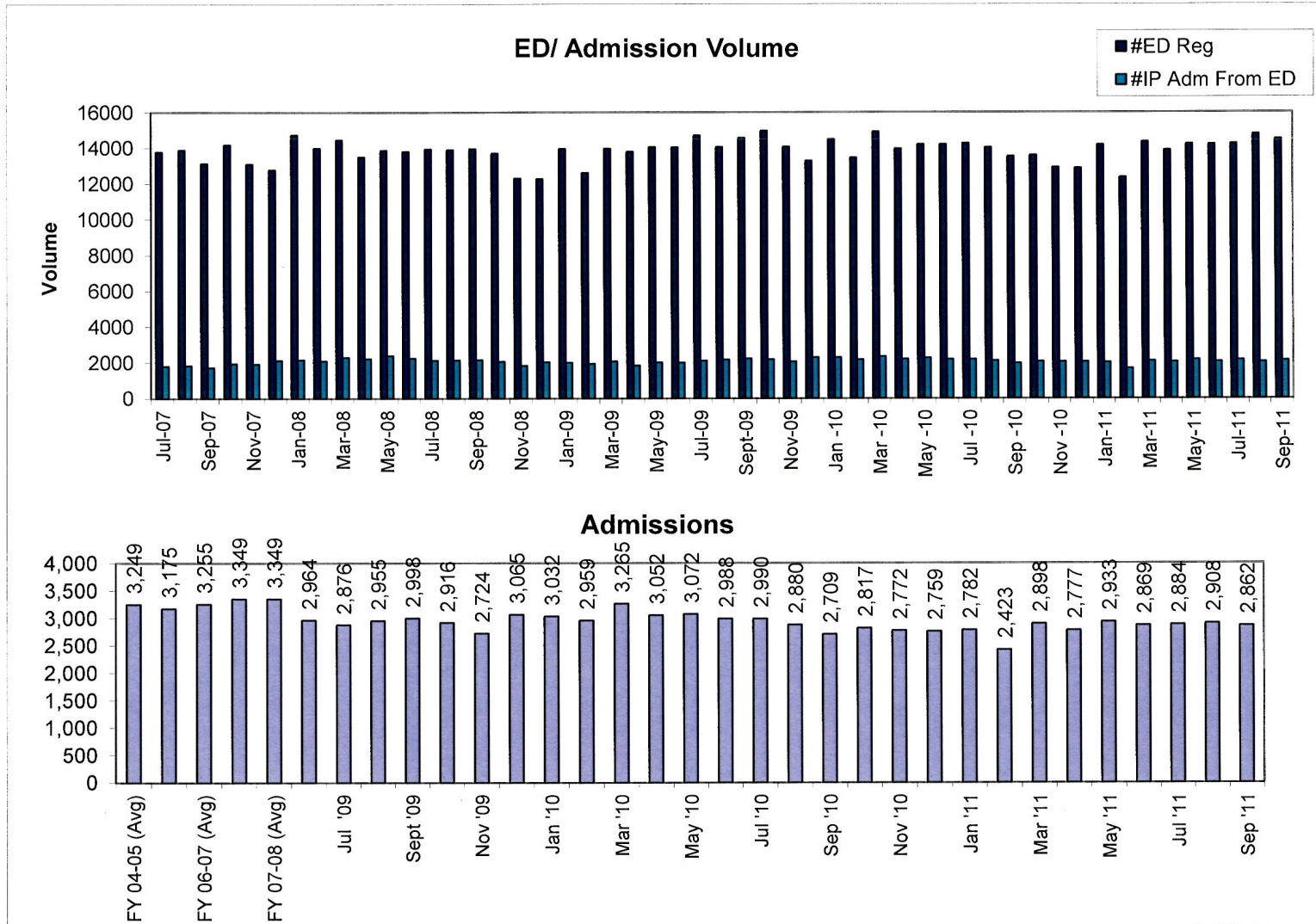


LAC+USC Healthcare Network

Average Daily Census by Nursing Unit Subset, July 2009 to Oct 2011
Based on Affinity Nursing Unit Statistical Report



LAC+USC Medical Center Workload Summary



ED registration is the number of patients accessing the ED (Registrations) and includes the following categories:

- * Left without being seen
- * Transferred to the UADC on the same day
- * Admitted as an inpatient
- * Dispositioned from the ED
- * Women's Walk-in