


ANALYSIS

This ordinance revises the Santa Clara River Floodway and certain related floodway maps and water surface elevations to reflect changes to the floodway that will result from the proposed drainage improvements designated as Private Drain No. 2615, which will be constructed as part of the State Route 126 – Commerce Center Drive Interchange Improvement Project. This ordinance also makes conforming changes to Chapter 11.60 of Title 11 – Health and Safety of the Los Angeles County Code. This ordinance will not become operative until said improvements have been completed and accepted by the Director of Public Works.

ANDREA SHERIDAN ORDIN
County Counsel

By: 
MARK T. YANAI
Principal Deputy County Counsel
Property Division

MTY:vn

12/28/10 (Requested)

01/12/11 (Revised)

ORDINANCE NO. _____

An ordinance revising the Santa Clara River Floodway and certain related floodway maps and water surface elevations, and making conforming amendments to Title 11 – Health and Safety of the Los Angeles County Code, to become operative upon the completion of the construction of Private Drain No. 2615 and the acceptance of said improvements by the Director of Public Works.

The Board of Supervisors of the County of Los Angeles ordains as follows:

SECTION 1. The Santa Clara River Floodway is revised as depicted on the Floodway Map Nos. 43-ML26.1 and 43-ML27.1, which are on file with the Director of Public Works and incorporated herein as if fully set forth.

SECTION 2. Section 11.60.020 is hereby amended to read as follows:

11.60.020 Areas designated -- Provisions added by reference.

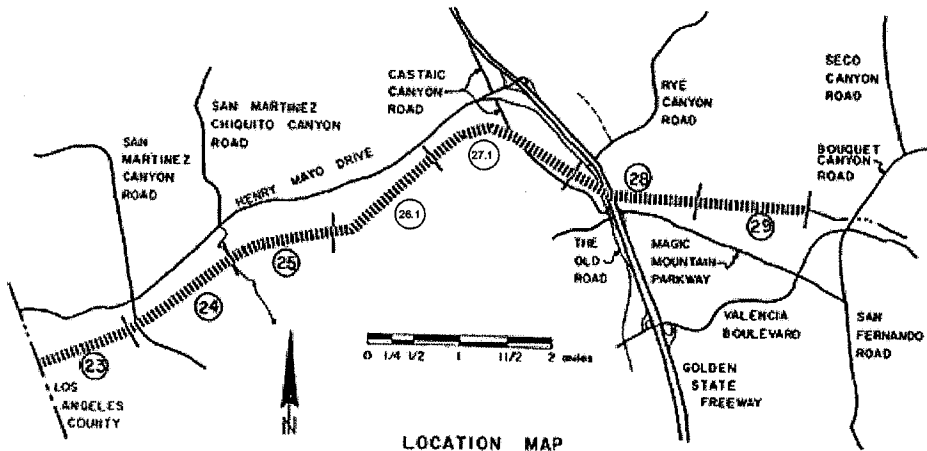
The following floodways are added by reference, together with all maps, water surface elevations, and provisions pertaining thereto:

Floodway Name	Floodway Map No.
...	
Santa Clara River	43-ML23, 43-ML24, 43-ML25, 43-ML26 43-ML26.1, 43-ML27 43-ML27.1, 43-ML28, 43-ML29, 43-ML40, 43-ML41, 43-ML42, 43-ML43, 43-ML44,

43-ML45, 43-ML46,
43-ML47 and 43-ML48

...

SECTION 3. Section 11.60.030 is hereby amended by replacing the location map for the Santa Clara River Floodway with the following map:

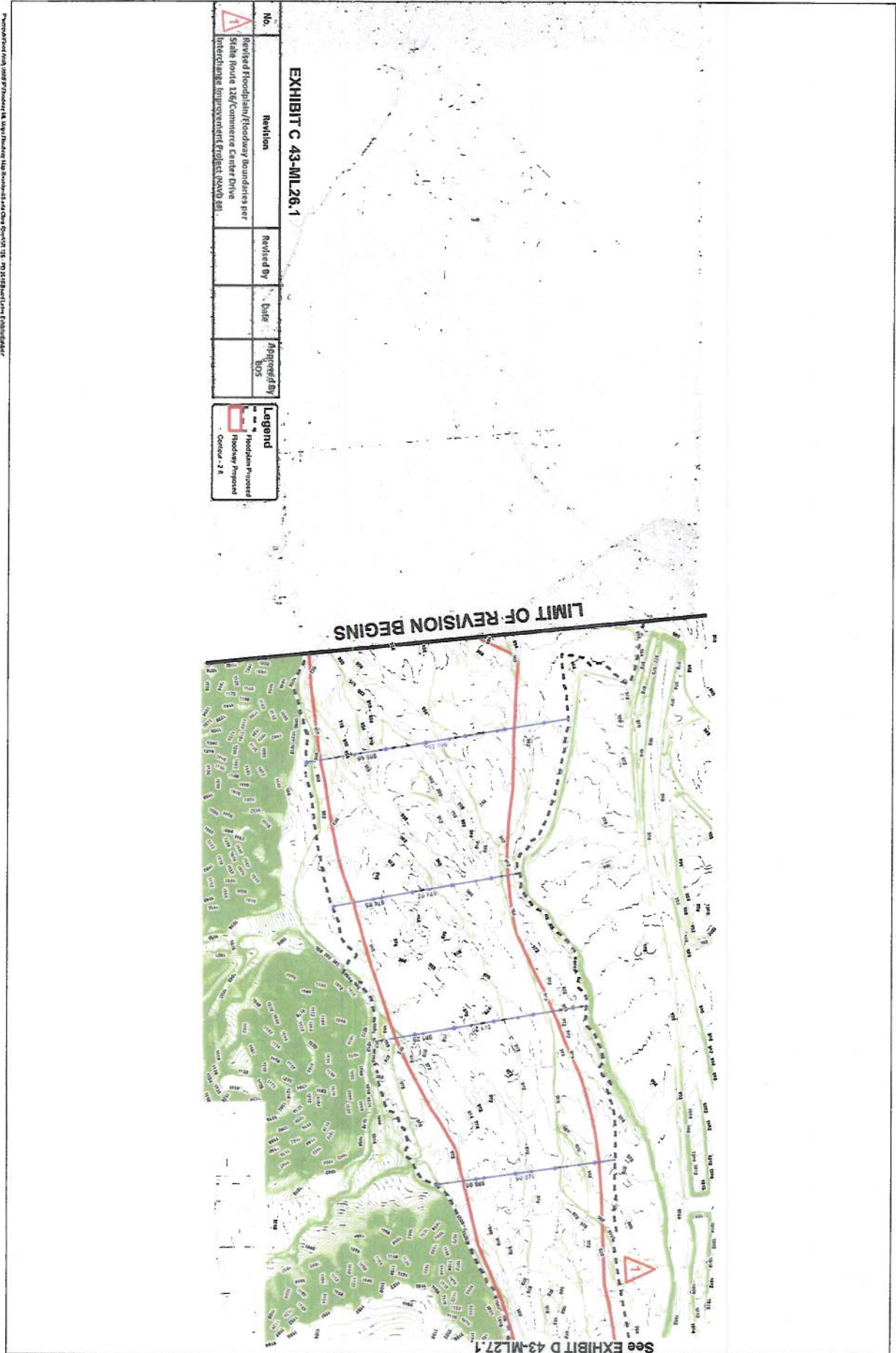


LOCATION MAP
SANTA CLARA RIVER FLOODWAY, LOWER REACH
REACH LIMITS
MAP NUMBERS 43-ML23 to 43-ML29

SECTION 4. This ordinance shall become operative upon the completion of the construction of Private Drain No. 2615 and the acceptance of said improvements by the Director of Public Works, which acceptance shall be promptly reported in writing by the Director to the Executive Officer of the Board of Supervisors.

[1160MYCC]

EXHIBIT C



See EXHIBIT D 43-ML27.1

EXHIBIT C 43-ML26.1

No.	Revision	Revised By	Date	Approved By
1	Revised Floodplain/Floodway Boundaries per State Route 156/Commerce Center Drive Interchange Improvement Project (RWD 88)			BOS

Legend

- Floodplain Proposed
- Floodway Proposed
- Center - 2 ft

Prepared for the State of Oregon by the Oregon Department of Transportation, 1111 NE Oregon Street, Salem, Oregon 97331

See EXHIBIT C 43-ML26.1

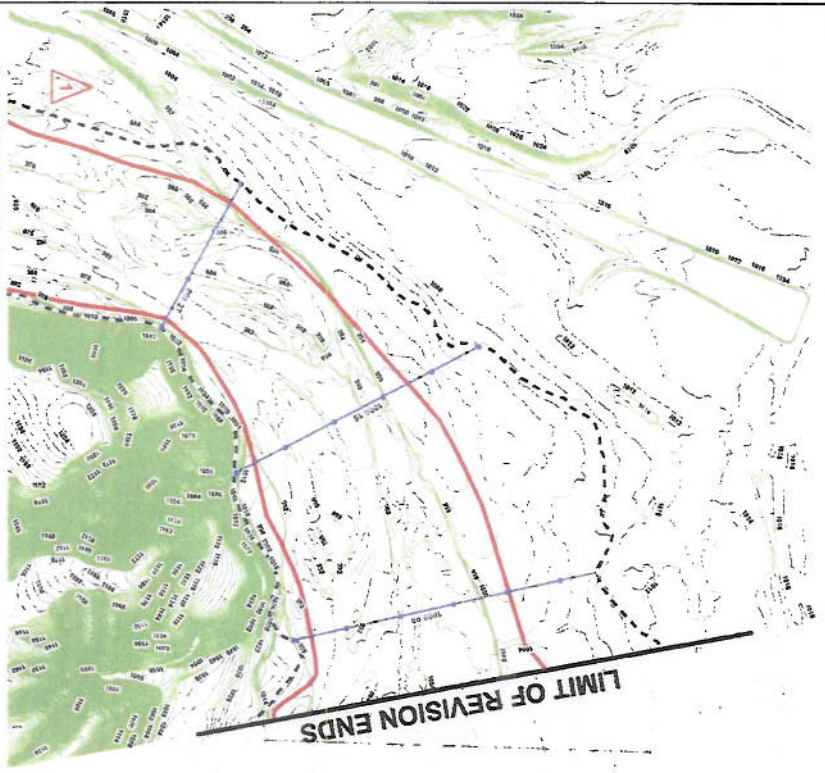


EXHIBIT D 43-ML27 1

No.	Revision	Revised By	Date	Approved By
1	Revised Floodplain/Foodway Boundaries per State Route 125/Commerce Center Drive Interchange Improvement Project. (NAVD 89)			BOS

Legend

- Floodplain Proposed
- Foodway Proposed
- Center - 2 ft