

Spotted Winged Drosophila (*Drosophila suzukii*)

Distribution: Occurs in Canada, China, India, Italy, Japan, Korea, Myanmar, Russia (Far East), Spain, and Thailand. In the U.S.: Florida, Oregon, Hawaii, Washington, and California.

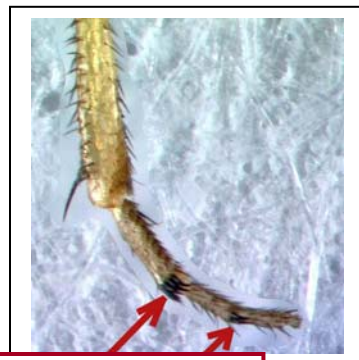
Hosts and Damage: Known to infest fresh, ripe cherries, blackberries, blueberries, raspberries, strawberries, etc.

Field ID: Adults are brownish yellow flies with black bands on the abdomen. Eyes are bright red. Male (about 2.6-2.8 mm long) with black spots on wings and two rows of combs on each fore tarsus; genitalia with several stout clasper bristles and thickened bristles on anal plate. Females (about 3.2-3.4 mm long) without tarsal combs and markings on the wings.

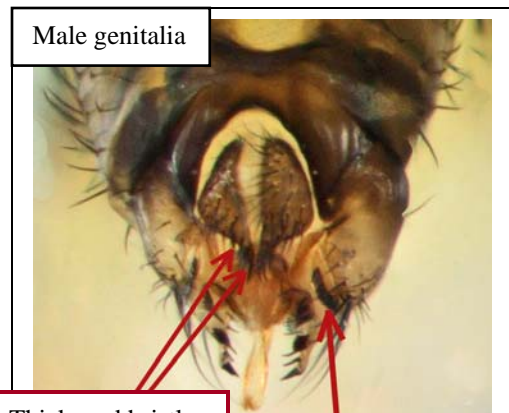
Larva (maggot) with white, cylindrical body tapered anteriorly and elevated posterior spiracles.



Male *D. suzukii*



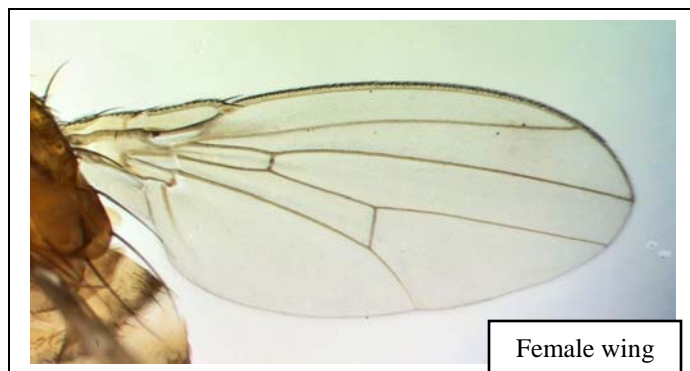
Combs on fore tarsus (male)



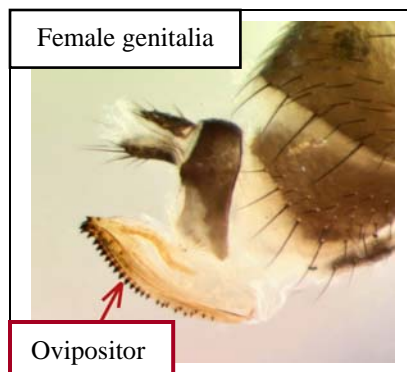
Male genitalia

Thickened bristles
on anal plate

Stout clasper bristles



Female wing



Female genitalia

Ovipositor