

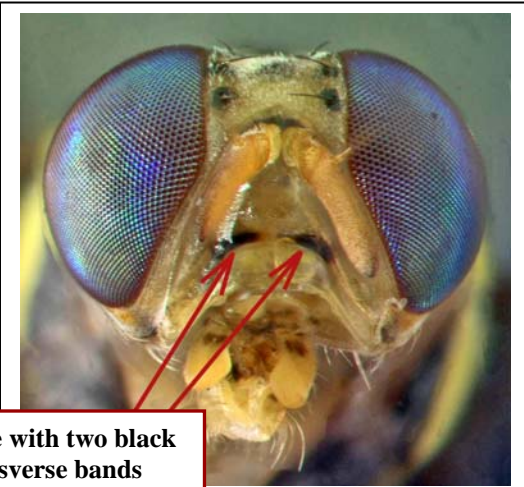
Guava Fruit Fly (*Bactrocera correcta*)

Distribution: Occurs in China, India, Myanmar, Nepal, Pakistan, Sri Lanka, and Thailand. **Not present in the U.S.**

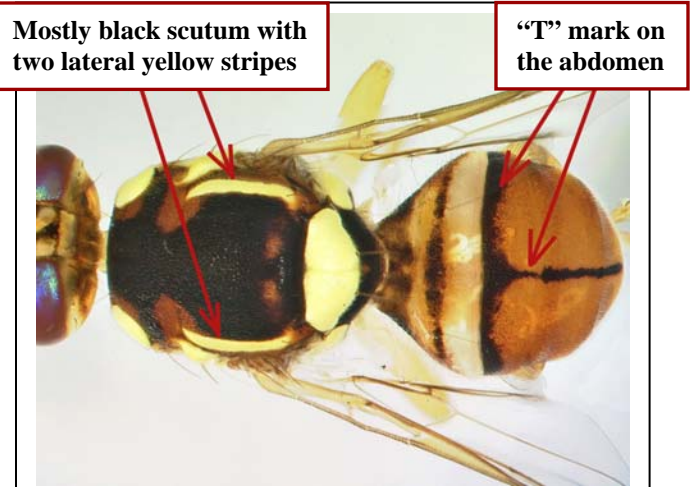
Hosts and Damage: Known to attack apple, citrus, fig, guava, jujube, mango, peach, roseapple, sapodilla, etc.

Larvae (maggots) feed inside the fruit making it unfit for consumption.

Field ID: Guava fruit fly is slightly larger than a housefly. It has two black transverse bands on its face and predominately black scutum with two yellow lateral stripes (vittae). Yellow costal band on the wing is interrupted and expanded at apex into a brown spot. Abdomen yellow to orange-yellow with a black “T” mark on dorsal surface. Larvae (maggots) are white to creamy white, legless with cylindrical bodies narrowed at the anterior end. After developing inside the fruit they enter the soil to pupate.

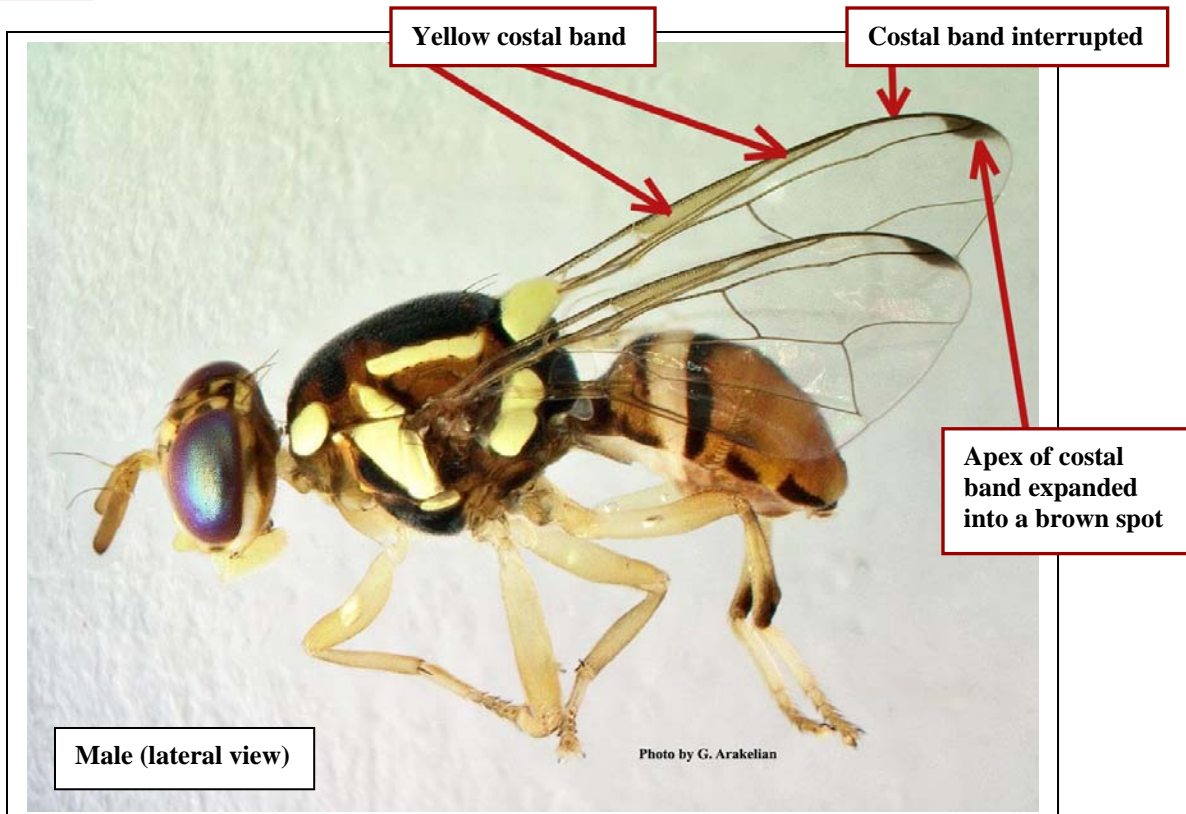


Face with two black transverse bands



Mostly black scutum with two lateral yellow stripes

“T” mark on the abdomen



Yellow costal band

Costal band interrupted

Apex of costal band expanded into a brown spot

Male (lateral view)

Photo by G. Arakelian