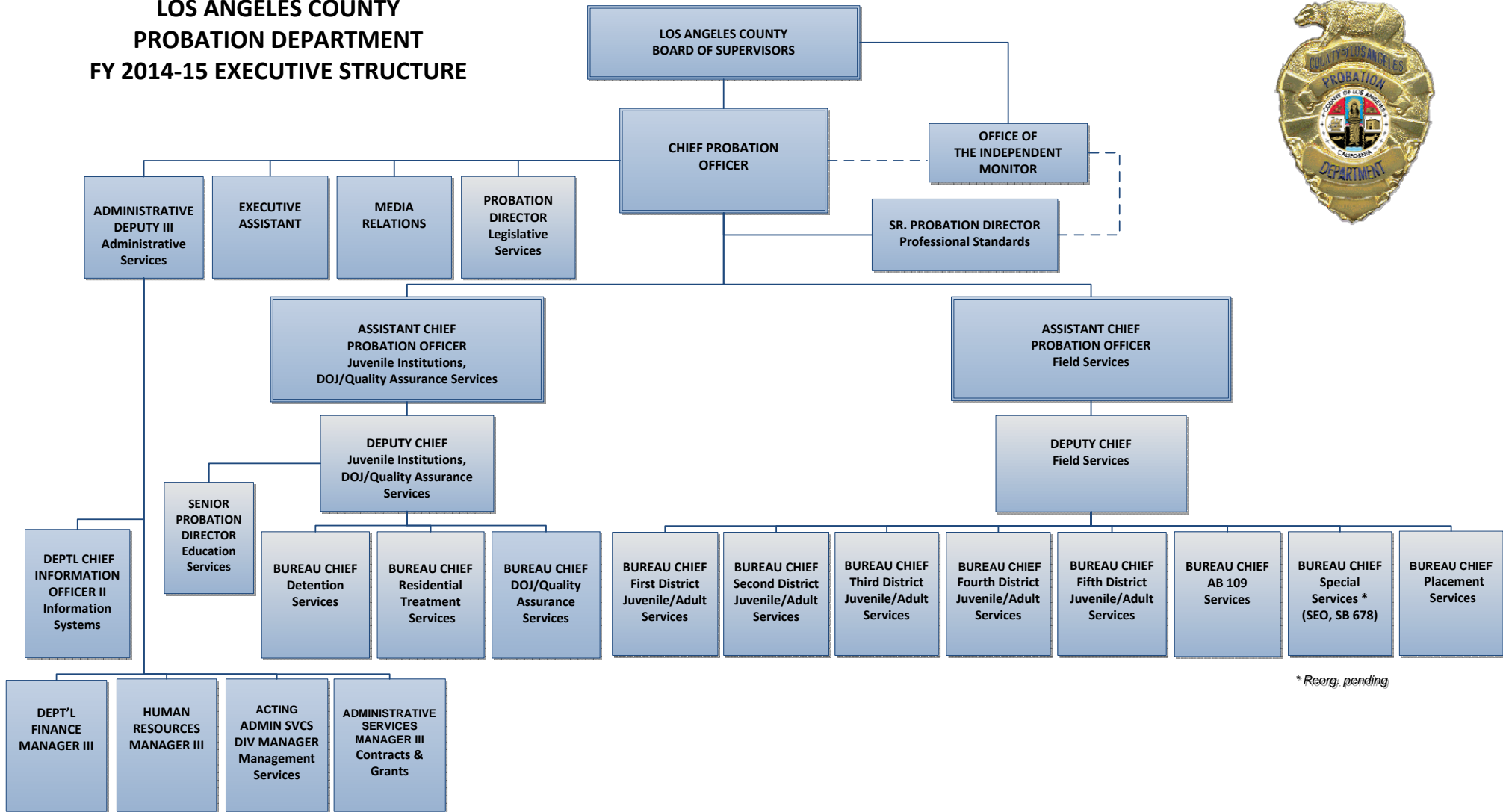


**LOS ANGELES COUNTY
PROBATION DEPARTMENT
FY 2014-15 EXECUTIVE STRUCTURE**



* Reorg. pending

DISTRICT BUREAU CHIEFS' JUVENILE AND ADULT AREA OFFICES AND OTHER FUNCTIONS

First District
 East Los Angeles Area Office
 N.E. Juv. Justice Center (Incl. Spec. Needs Court)
 NEJJC - Dual Supervision // 241.1 WIC Investigation
 Juvenile Day Reporting Center
 Pomona Valley Area Office (Incl. DUI Grant)
 San Gabriel Valley Area Office
 CCTP/CCTP-YOBG
 JJCPA - School-Based Cluster 1

Second District
 Adult Day Reporting Center
 Centinela Area Office
 Crenshaw Area Office
 Firestone Area Office
 Juvenile Day Reporting Center
 Kenyon Juvenile Justice Center
 South Central Area Office
 Intensive Gang Supv // DJJ
 JJCPA - School-Based Cluster 2

Third District
 East San Fernando Valley Area Office
 Juvenile Day Reporting Center
 Santa Monica Area Office
 Van Nuys Area Office
 Developmentally Disabled Minors
 Juvenile Citation Diversion
 JJCPA - School-Based Cluster 3
 Pretrial Services
 Teen Court

Fourth District
 Harbor Area Office
 Long Beach Area Office
 Rio Hondo Area Office
 ASCOT Program
 Central Adult Investigations
 Central Records
 JJCPA - School-Based Cluster 4

Fifth District
 Adult Day Reporting Center
 Antelope Valley Area Office
 Foothill Area Office
 Riverview Area Office
 Valencia Sub-Office
 Court Officers
 JJCPA - Administration
 JJCPA - School-Based Cluster 5