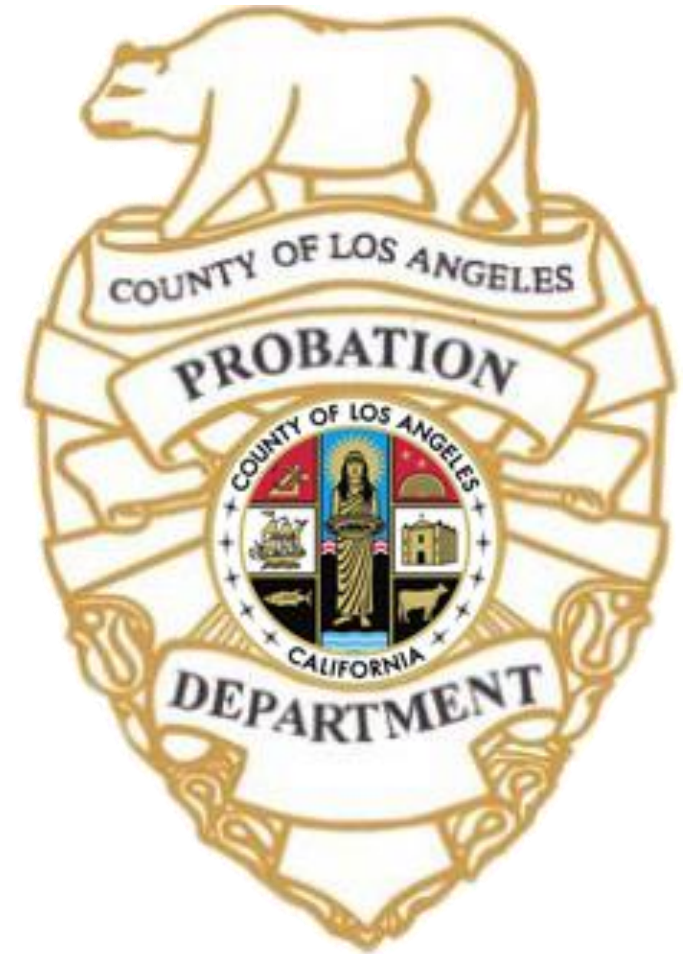


# Los Angeles County Probation Department Juvenile Hall





# Programs & Services

---

- Medical and Mental Health Treatment
- Educational Programs
- Religious Services
- Outdoor Recreational Activities
- Library on Campus
- Behavior Management Program





# Visiting Procedures

---

- All visitors must walk through a detection machine and subject to search by a narcotic canine.
- All visitors are subject to search and seizure by a Peace Officer.
- Visitors can only have a photo ID card, a locker key and/or a car key.
- Visitors who attempt to bring in any items other than the three listed above may be subject to arrest and prosecution.



# Prohibited Items

The following are examples of prohibited items:

- Firearms, knives, pepper spray and weapons of any kind
- Narcotics of any kind including prescription medication, alcohol, drug paraphernalia, marijuana and vape pens
- Metal, glass and wood (paperclips, rulers, hairclips, staples, bottles, etc.)
- Sharp instruments (tweezers, knives, scissors)
- Electronic devices (cellphones, smart watches, cameras, iPods, DVDs)
- Writing tools (pens, pencils, markers, etc.)

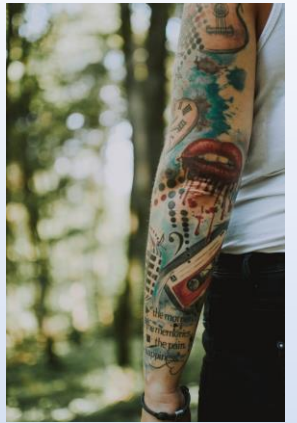






# Inappropriate Attire for Visiting

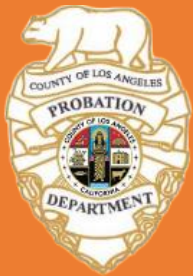
Visitors must adhere to the Juvenile Hall's visitation dress code.



- Purses, wallets, backpacks, bags
- Sports teams insignias (ex: Lakers, Dodgers, etc.)
- Earrings larger than 3/8 in diameter
- Excessive/exposed gang related tattoos
- Open-toed/open heel shoes or heels higher than 2 inches
- Shorts, short skirts, or dresses (above mid thigh)/ torn jeans
- Sleeveless/tight fitting/midriff bearing/low cut/ strapless or tank tops.
- See-through clothing and white T-shirts
- Excessive red or blue attire



# Assistance



If you have a question or concern, please ask a  
Probation Staff Member for assistance.

**(562) 940-8681**

For compliments, complaints, or grievances  
please contact the Office of the Ombudsman at

**(877) 822-3222**

For more information, please refer to the  
Detention Services Bureau Parent Handbook



**Thank you for visiting the  
Los Angeles County  
Probation Department's  
Juvenile Hall.**