

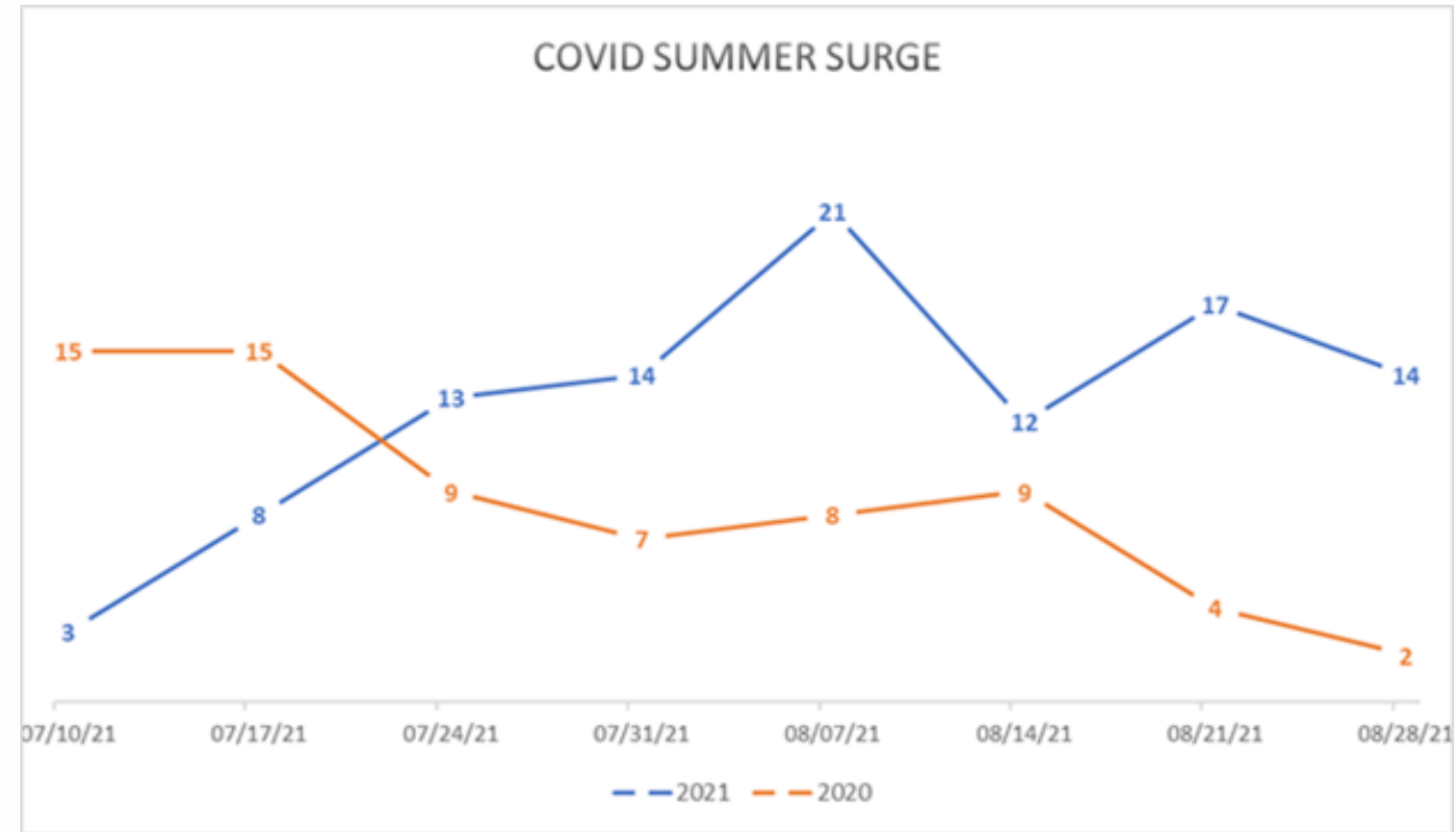
COVID ROARS BACK

COUNTY ORDERS VACCINES, TESTING TO COMBAT DELTA VARIANT

Starting of August 23rd, Los Angeles County required all staff to be fully vaccinated or to be tested on a weekly basis. This includes sworn and nonsworn, contractors and volunteers assigned to Institutional locations including DSB, RTSB and some Adult programs under AB109/Pretrial. The order also requires all vaccinated or non-vaccinated persons to wear masks in indoor public settings and in the workplace.

Effective October 1st, ALL County employees must be vaccinated. Exceptions will be limited to medical issues and strongly held religious beliefs. All staff will require vaccine certification. There is a link to the Vaccine Verification Guide below. All exempted staff will be tested weekly. The testing protocols link is below.

Delta is currently the predominant variant of the virus in the United States and is highly contagious, more than 2x as contagious as previous variants. In two different studies from Canada and Scotland, patients infected with the Delta variant were more likely to be hospitalized than patients infected with Alpha or the original virus that causes COVID-19. Most of the hospitalizations and deaths caused by COVID-19 are unvaccinated people.



The Probation Department had more positives tests during summer 2021 (102) than during the same period in 2020 (69). After positive cases dropped overall through Oct 31, the holiday surge began. We can stop a holiday surge this year but we must all comply with the vaccination order and mask mandate. Please be part of the solution.

Probation News

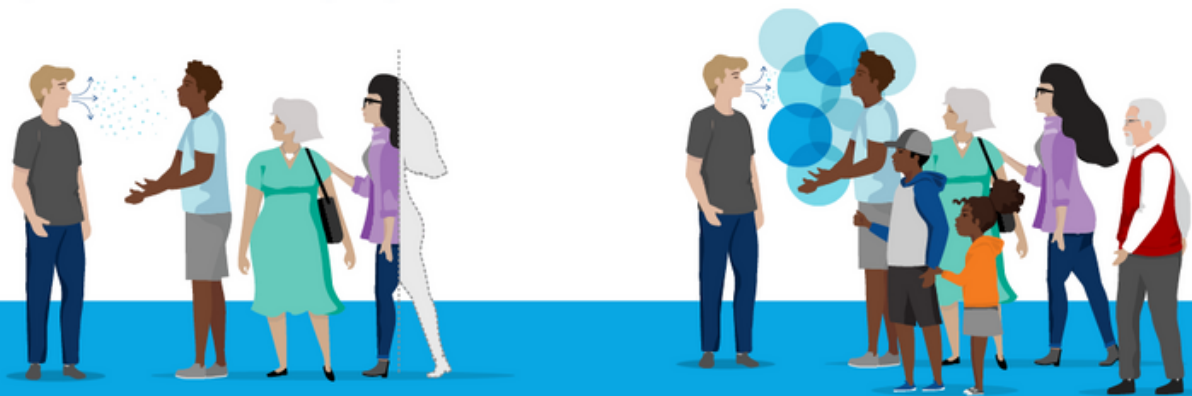
[Get your vaccine here. It's Free!](#)

[Download the LA County Workforce COVID-19 Testing Protocol](#)

[Download the LA County Vaccination Verification Guide](#)

SARS-CoV-2
1 person → 2.5 people

Delta variant
1 person → up to 6 people



COVID-19 rates of transmission

According to the [CDC](#), the Delta variant infection rate is more than double that of the original virus.

Vaccines Save Lives.