



DEPARTMENT OF YOUTH REHABILITATION SERVICES



REDEFINING YOUTH JUSTICE THROUGH COMMUNITY CAPACITY BUILDING



dyrs.dc.gov



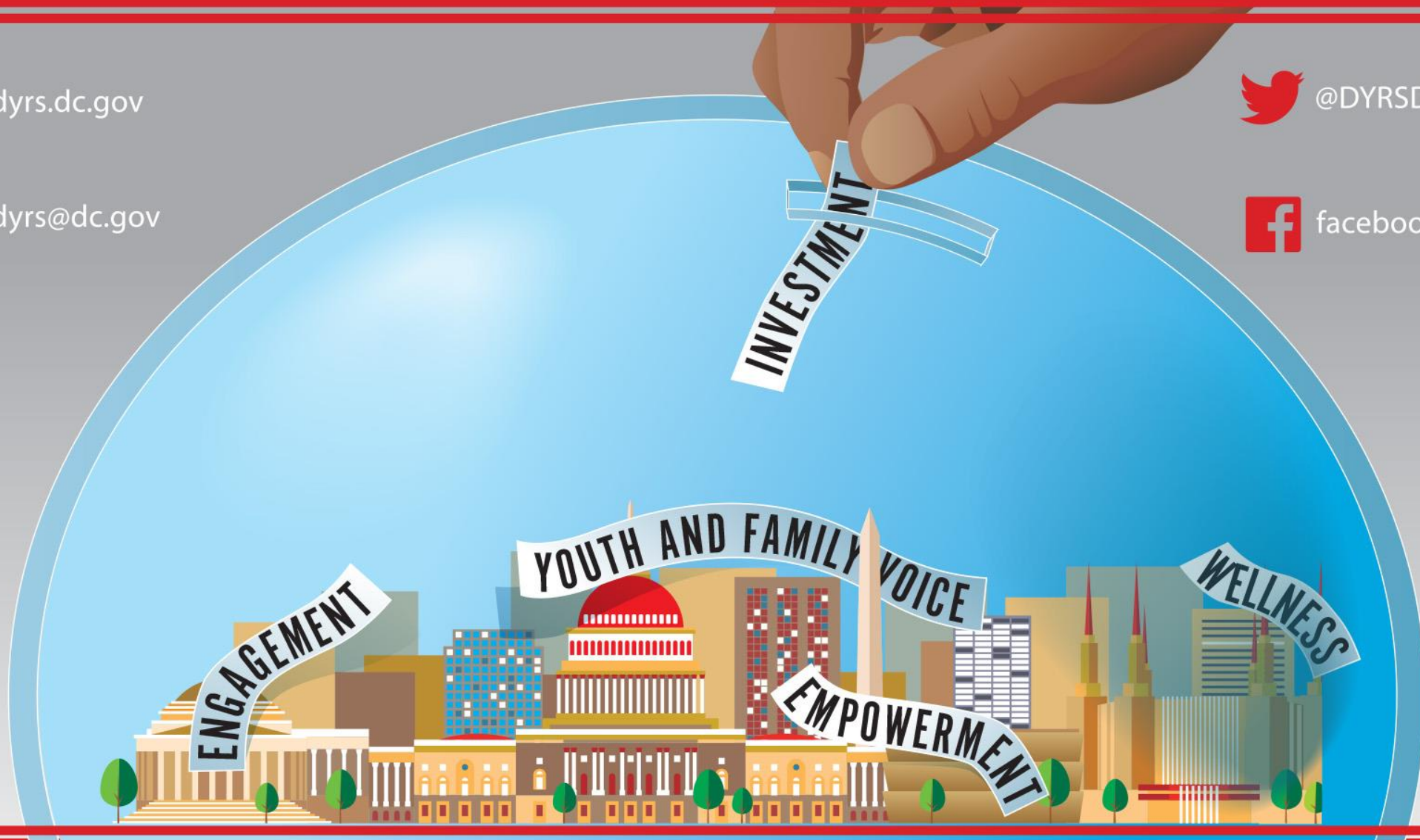
dyrs@dc.gov



[@DYRSDC](https://twitter.com/DYRSDC)



facebook.com/dyrsdc



EVOLUTION OF THE FIELD

- **Punitive Era**

- Horribly Destructive
- Legacy of Harmful Root Assumptions and Dangerously Low Expectations for Youth of Color

- **Reform Era**

- Kinder, Smarter, more Efficient
- Still Grappling with Unresolved Issues
- System Focused

- **Transformative Era.....**

- Healing Centered
- Committed to Restorative Practices
- Community Driven
- A New System Identity

IT TAKES A VILLAGE

...Investing in Village Capacity

- Youth**
- Families**
- Networks**
- Neighborhoods**
- Formal and Informal Institutions & Leaders**

PROBATION'S REINTRODUCTION TO THE COMMUNITY

- **NeONs**

- Neighborhood Opportunity Networks
- Outreach, Training & Organizational Culture Change

- **The Young Men's Initiative**

- \$130 Million: Health, Education, Employment & Justice

- **Arches: Transformative Mentoring Initiative**

TRANSFORMATIVE MENTORING INITIATIVE

- **Indigenous Natural Leaders**
- **Shared Life Experiences**
- **Track Record of Commitment**
- **Consistent Presence**
- **Impactful Messages**
- **Transformative Relationships**

Transformative Mentoring in Action

- **16 – 24 year-old case loads**
- **Group Empowerment Sessions**
- **Individual Transformative Mentoring**
- **24/7 Responsiveness & Intervention**
- **Restorative Justice & Community Peace Making**
- **Urban Institute Evaluation**

D.C. Department of Youth Rehabilitation Services



DYRS is the District of Columbia's cabinet level juvenile justice agency, which administers detention, commitment, and aftercare services for youth held under its care in its facilities or residing in the community.

BIFERCATED SYSTEM OVERVIEW

Court Social Services

1. Pre-Adjudication Community Supervision
2. Pre-Adjudication Detention Intake
3. Post-Adjudication Probation Supervision
3. Post – Adjudication Probation Supervision

Department of Youth Rehabilitation Services

1. Operation of Detention Facility (88 beds)
2. Oversight of Pre-Adjudication Non-Secure Group Homes
3. Post Adjudication Committed Youth
4. Operation of Secure Facility for Committed Youth (60 beds)
5. Operation & Oversight of a Community-Based Continuum of Care

Transformative Justice

- **Examination of Beliefs and Values**
- **Organizational Culture Change**
- **A New Identity A New Purpose**

Continuum of Care

Home

Foster
Home

Indep.
Living

Group
Home

RTC

New
Beginnings

←
**Lowest
Supervision**

**More
Independence**

**Intensive
Supervision**
→

**Less
Independence**

A Restorative Justice Lens

- **Assessments**
- **Structured Decision Making**
- **Least Restrictive Setting**
- **Addressing Harm & Promoting Healing**
- **Restoring Victims and Survivors**

Reinvestment in Local Community Based Options

- **Decreased Reliance on Residential Placement**
- **Initial Investment in Community Capacity**
 - \$8 million Annually
- **Implementation of Credible Messenger Mentoring**

Evolution of the Credible Messenger Model

- **8 Contracted Agencies**
 - Hiring 75 credible messengers full time
 - Serving Youth AND FAMILIES
 - Secure Facilities and in Community
- **Shared Responsibility for Court Committed Youth**
 - Intensive engagement & wrap around supports
 - Policy formation and program design
- **Mayor's Public Safety Strategic Plan**

DYRS Achievement Centers

- **Comprehensive Programs & Services**
 - Clinical support
 - Social Services
 - Educational Assistance
 - Workforce Development & Entrepreneurship Projects
 - Vocational Training
 - Barbering
 - Culinary Arts
 - Film Making
 - Graphic Arts.....

Basic Implementation Steps

- **Stakeholder Consensus on CM3 Concept and Programmatic Framework**
- **Define Scope of Service and Implementation Timeline**
- **Procurement of Credible Messenger Services**
- **Stakeholder Trainings and Orientations**
- **Credible Messenger Program Implementation**
- **Credible Messenger Program Operation**
- **Track & Evaluate Impacts and Outcomes**

A Bridge to Transformation

SERVICE
PARADIGM

New Identity for:

YOUTH, FAMILY, CREDIBLE MESSENGERS AND SYSTEM PARTNERS

EMPOWERMENT
PARADIGM

