

Ready to Rise:

Expanding Opportunities for All L.A. County Youth

**A Public-Private Partnership
between
California Community Foundation
Liberty Hill Foundation
and the
Los Angeles County Probation Department**



California
COMMUNITY
Foundation



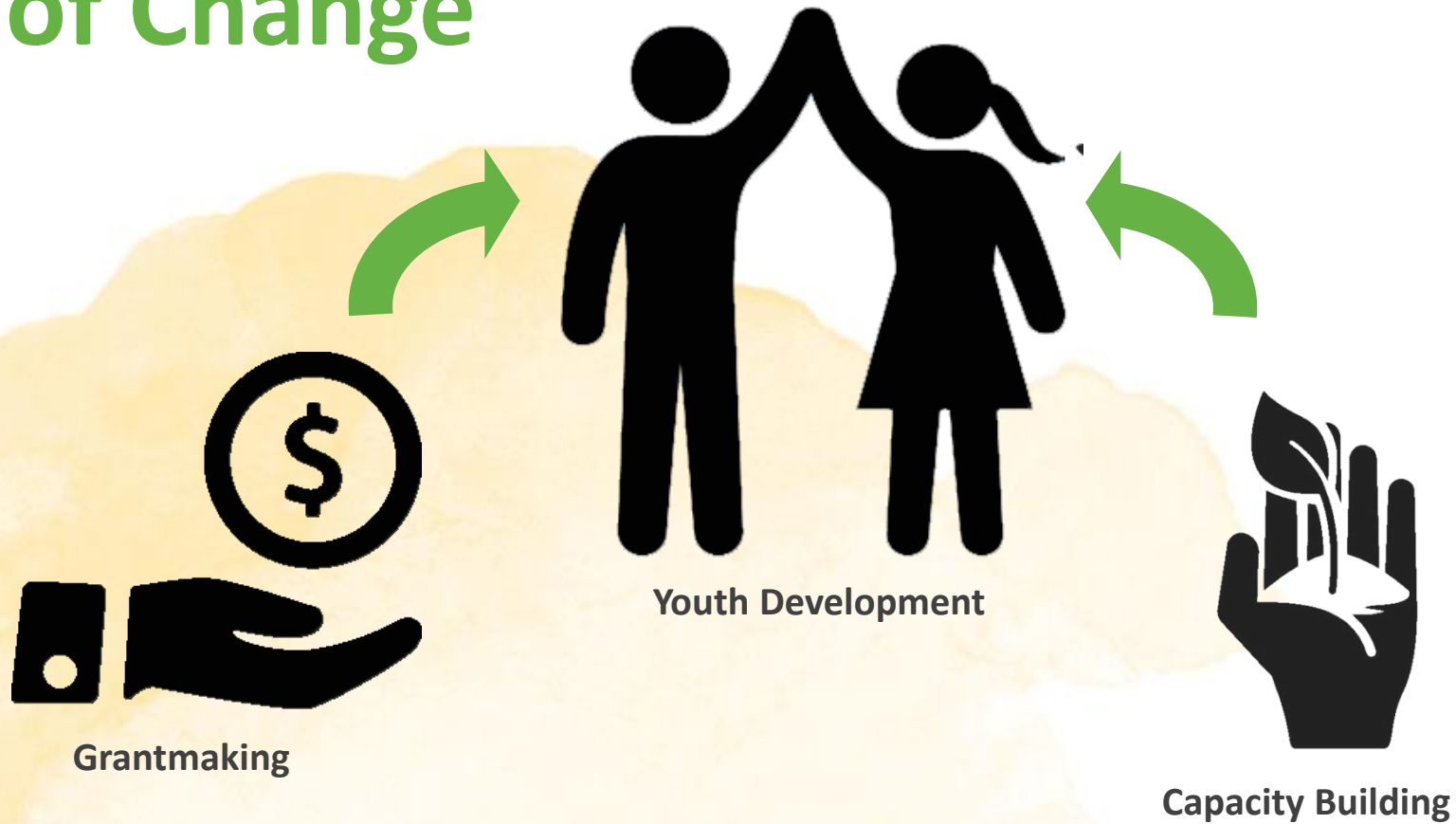


R2R Vision

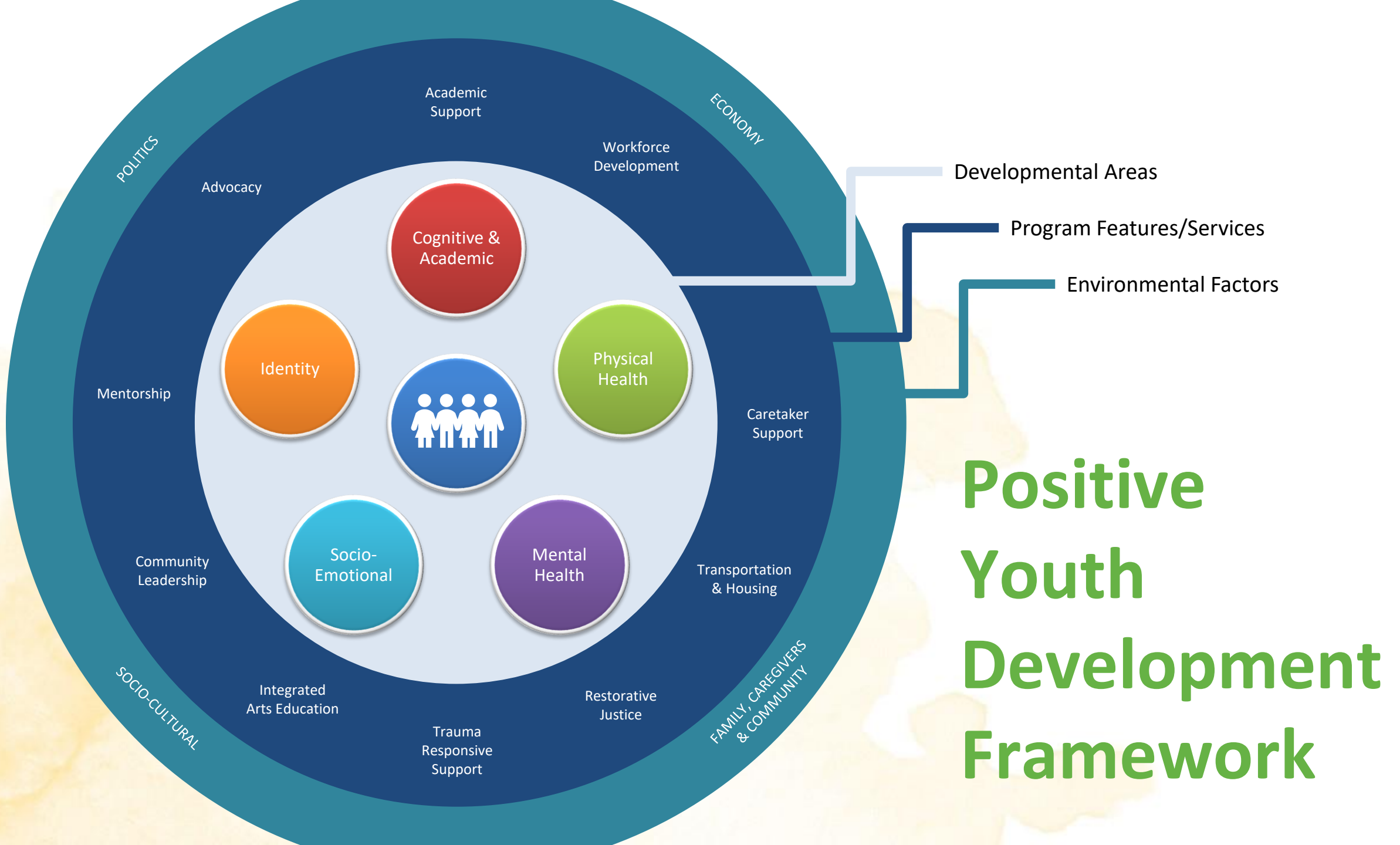
Ready is to Rise is focused on building the nation's largest youth development system by investing in the community organizations that serve our County's highest need youth.

Through a community centered, positive youth development approach, success will be achieved when all L.A. County youth have the access and opportunity to succeed, learn, and thrive.

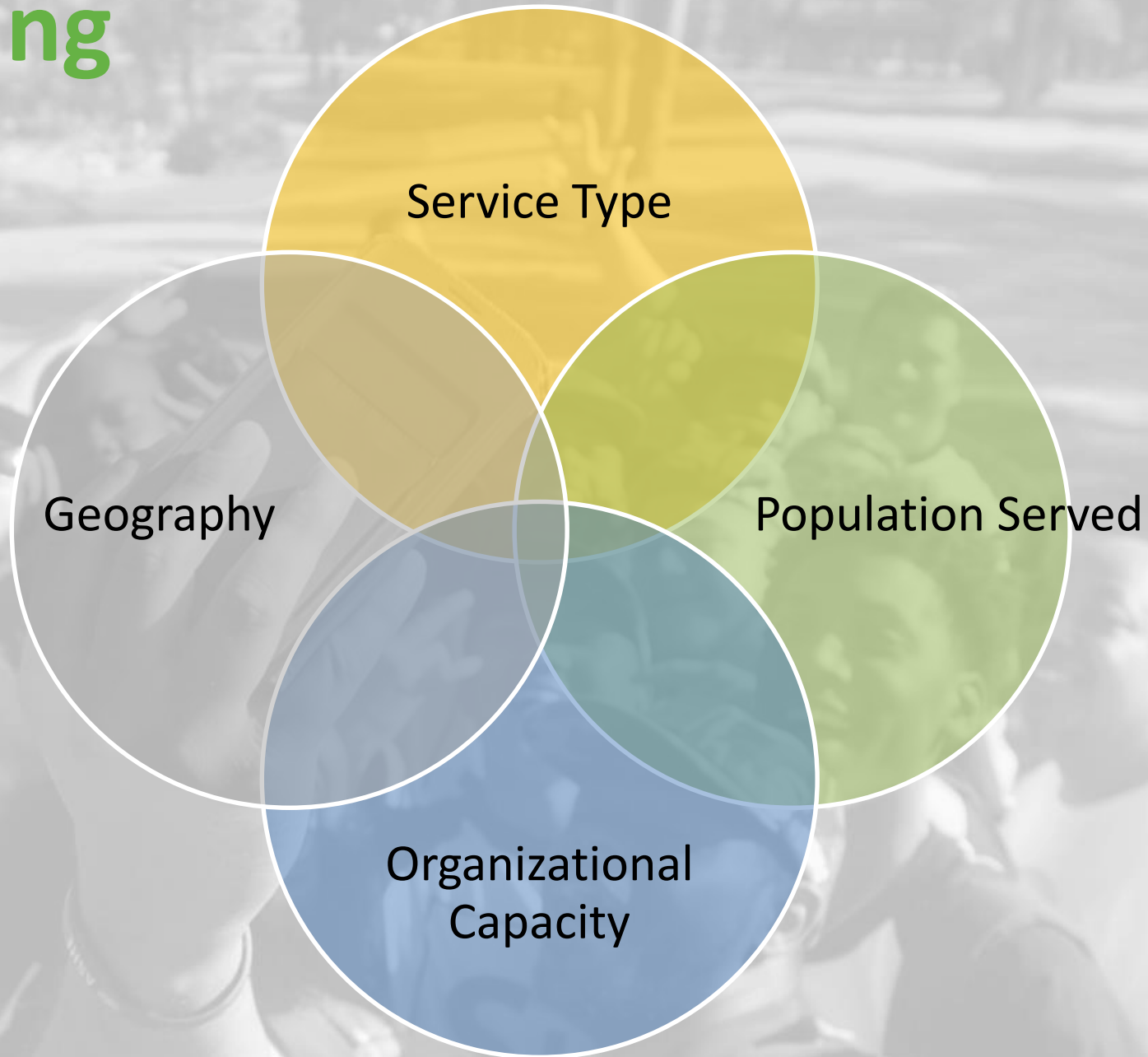
Theory of Change



1. Expand services to support high-needs youth
2. Integrate a comprehensive youth development framework
3. Strengthen organizations to do their work



Grantmaking Priorities

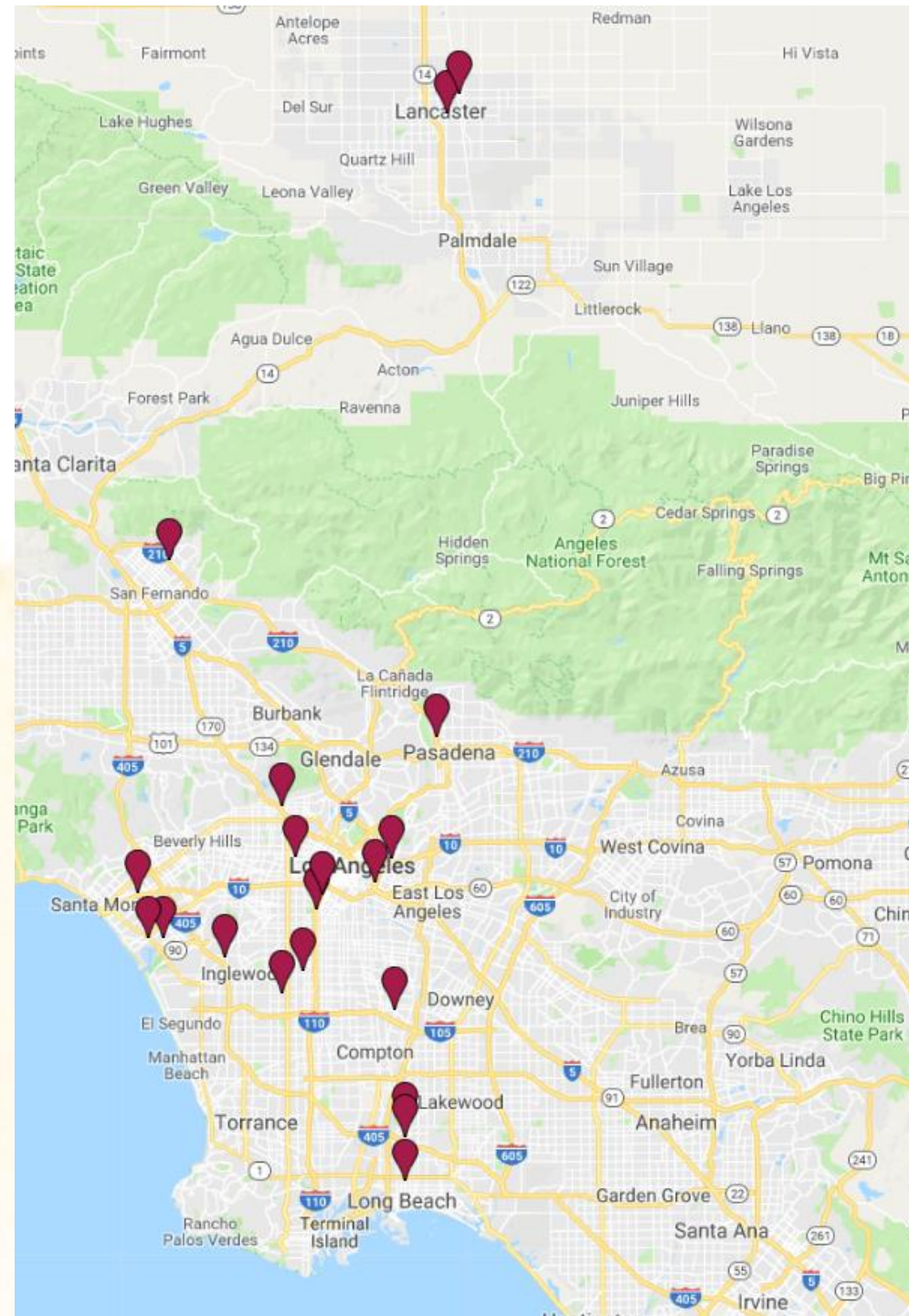


Grantmaking Overview



R2R Cohort 1

Organization Name
Antelope Valley Boys & Girls Club
California Youth Connection
Centro Community Hispanic Association Inc.
Coalition for Engaged Education
Community Coalition
Community Development Technologies Center
Safe Place for Youth
Teens Exploring Technology
EmpowHer Institute
Flintridge Center
Girls Club of Los Angeles
InnerCity Struggle
Legacy LA Youth Development Corporation
Long Beach BLAST
Los Angeles Youth Network
Lost Angels Children's Project Inc
Pops The Club
Southern California Crossroads
The California Conference for Equality and Justice
Tia Chucha's Centro Cultural



Positive Youth Development

Connecting grantee program models to core developmental areas

Organization Name	Developmental Areas				
	Identity	Mental Health	Socio-Emotional	Cognitive, Academic	Physical Health
Antelope Valley Boys & Girls Club					
California Youth Connection					
Centro Community Hispanic Association Inc.					
Coalition for Engaged Education					
Community Coalition					
Community Development Technologies Center					
Safe Place for Youth					
Teens Exploring Technology					
EmpowHer Institute					
Flintridge Center					
Girls Club of Los Angeles					
InnerCity Struggle					
Legacy LA Youth Development Corporation					
Long Beach BLAST					
Los Angeles Youth Network					
Lost Angels Children's Project Inc					
Pops The Club					
Southern California Crossroads					
The California Conference for Equality and Justice					
Tia Chucha's Centro Cultural					
	20	20	20	18	8

Capacity Building

Support for community based organizations that is customized and responsive to their needs. This includes access to experts, consultants, coaches, and trainers that will help organizations meet their own goals.



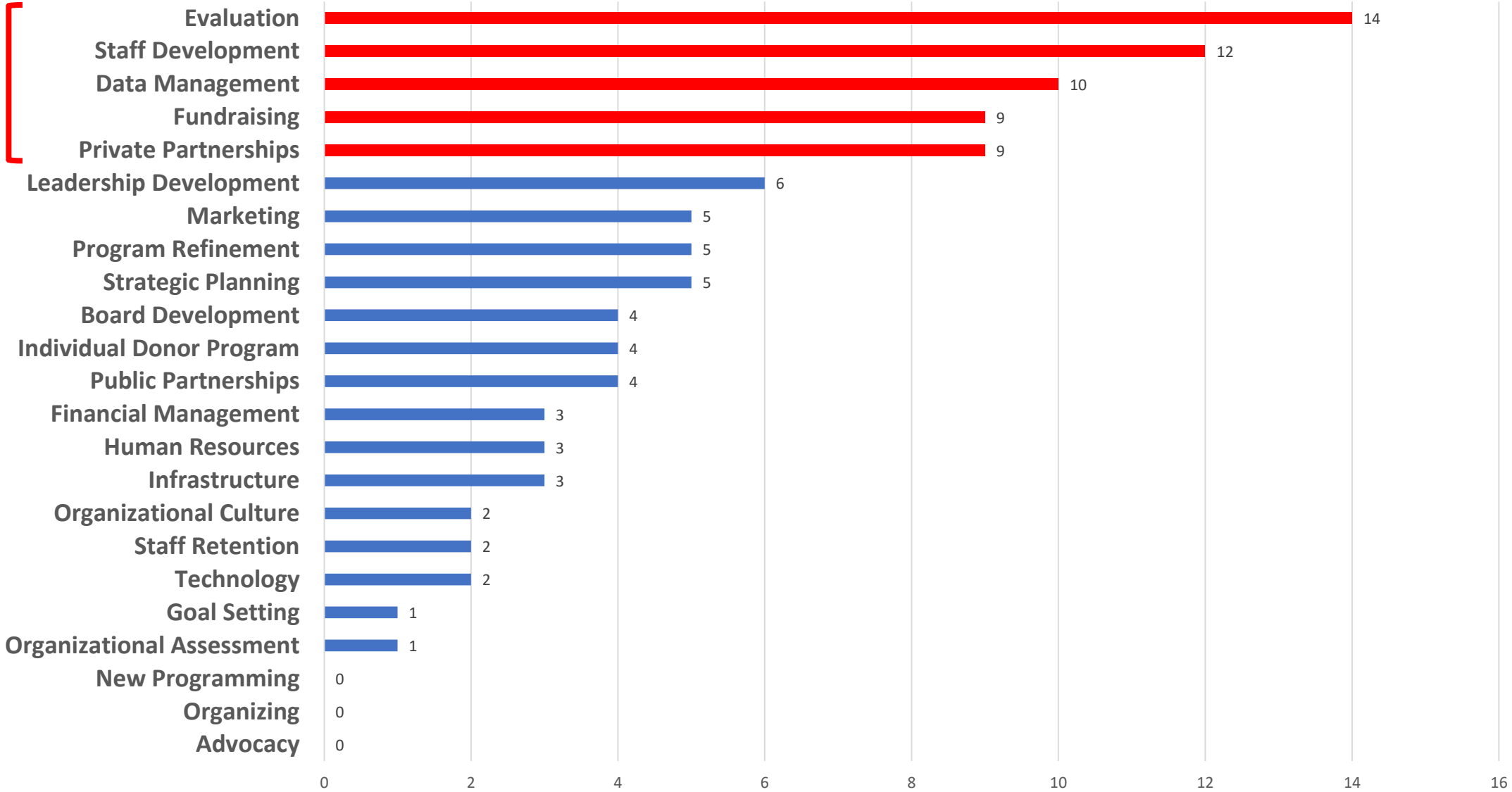
R2R CAPACITY BUILDING NEEDS

COHORT 1 (20)

Number of Organizations

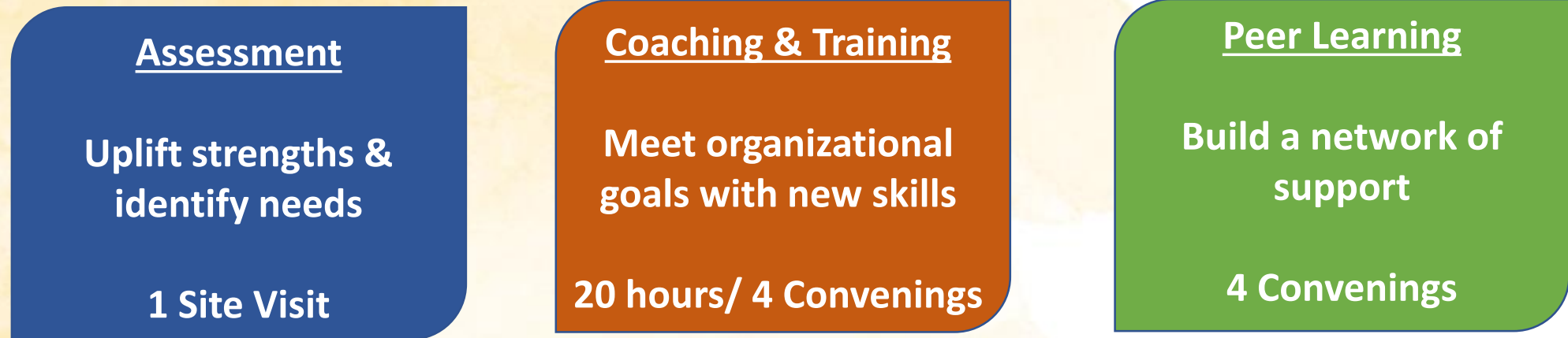
Top 5 Domains

Capacity Building Category



R2R Capacity Building Model

By investing in the talent and leadership of community partners, organizations are better positioned to fulfill their long term missions and provide high quality services for youth.



Capacity building = Supports nonprofits to increase the specific capacities needed to deliver stronger programs, take risks, build connections, innovate and iterate.

R2R Grantee Engagement

Launch Convening (50 grantees participants) – August 2019

"It has been extremely valuable to hear from other programs about the strategies and tools used with their populations"

20 Site Visits & Comprehensive Assessments – October 2019

Revised Objectives, Capacity Building Plans & Coaching Initiated – October & November 2019

2-Day Cohort Based Training – November 2019

"Appreciated the honesty and transparency each agency shared regarding their challenges. Almost all organizations were able to relate."

"The convening was very well organized. It was clear that a great deal of thought went into planning and setting the tone for both days."

1-Day Cohort Based Training – February 2020

Next Steps

January 2020

- ❖ 25-30 additional organizations
- Cohort 2: < \$1 million
 - Growth funding for effective organizations to serve more youth
 - Enhance their sustainability and community impact
- Cohort 3: > \$1 million
 - Growth funding for smaller and/or emergent organizations with the opportunity to grow
 - Enhance stability and expand the youth development system in LA County
- ❖ Provide workshops and training opportunities for organizations outside the cohorts





Questions

