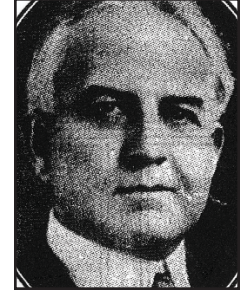




County of Los Angeles Board of Supervisors



SUPERVISOR HENRY W. WRIGHT

Term: 1921- 1930
District: Fifth
Date of Birth: March 4, 1868
Death: Aug. 19, 1948

Henry W. Wright served as county supervisor for more than two terms. On June 7, 1921, he was appointed to the supervisorial seat by the governor to succeed Jonathan S. Dodge, who resigned to accept a position in state government. He was elected to the seat in 1922 and again in 1926.

Wright was born March 4, 1868 in Iowa, where he grew up and attended public schools. He went to Iowa State College and graduated from the Omaha Commercial College.

From 1892 to 1899 he was purchasing agent for the Iowa School for Handicapped Children at Glenwood, Iowa. In 1901 he became secretary of the State Board of Control of Minnesota. He held that position until 1904, when he moved to Los Angeles and entered the real estate business.

Wright was a staunch Republican, and his involvement in civic affairs led to his election to the State Assembly, a position he held from 1914 - 1920. During that time he served two terms as chairman of the Ways and Means Committee, and was twice unanimously elected speaker.

During his terms as county supervisor, Wright oversaw the Law Library; Museum of History, Science and Art; Grand Jury and Custodian of Buildings and Janitors. During World War I, he served as a member of the district draft board.

Wright's credits included member of the Board of Regents of the University of California, Methodist Church and Masonic Lodge.

On Aug. 19, 1948, Wright died. He was 80, and was survived by his wife, Blanche, and three boys: Wilber, Harold and Ralph.

Source: Los Angeles County Records.