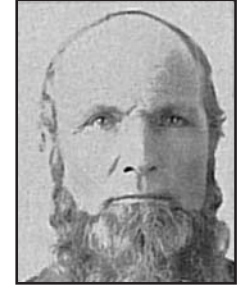




## County of Los Angeles Board of Supervisors



### SUPERVISOR JOHN WILLIAM COOK

Term: 1891 – 1895  
District: First  
Date of Birth: 1857  
Death: Not Available

John William Cook served as county supervisor for one term. He assumed office in 1891.

Cook was born in Crawford County, Pa. and grew up on the family farm. He attended public schools in his hometown, but eventually dropped out to go to work for his brother in the grain and warehouse business. Cook worked there for seven years, helping to grow the business to be one of the largest of its kind in northeastern Missouri.

In 1885, seeking a change of climate, Cook moved West and settled in Los Angeles County. He partnered with George D. Whitcomb, and along with some other early pioneering families, purchased hundreds of acres of land. These early settlers laid out what is today the town of Glendora, and are credited with being the founding fathers. Cook became the secretary of the Glendora Land Company and also of the Glendora Water Company. Cook also maintained hundreds of acres of oranges, and continued his real estate business.

In 1891 he was elected a member of the Board of Supervisors of Los Angeles County, and in 1893-94 served as its chairman. While on the Board he also had supervision of more than 1,000 miles of road in the County. He was appointed by the governor of California as one of a board of three leading fruit growers to manage the state citrus fruit fair.

In 1895 Cook moved to Oregon for health reasons. He turned his attention to mining and real estate development. By the early 1900s, Cook was considered one of the most successful land developers in the Western United States.

Cook was a staunch Republican, and his credits include membership in the Knights Templar Mason, Portland Chamber of Commerce, the Oregon Good Roads Association, the Portland Realty Board, the Commercial Club and the Presbyterian Church. His hobbies included fishing and hunting.

Cook was survived by his daughter, Inez.

Source: Portland, Oregon, Its History and Builders: In Connection with the Antecedent Explorations; History of Glendora; Glendora City Records; Los Angeles County Records.