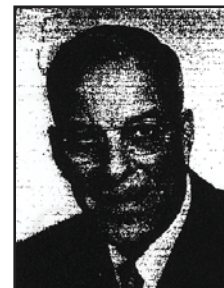




County of Los Angeles Board of Supervisors



SUPERVISOR HERBERT C. LEGG

Term: 1934 – 38, 1950 - 58
District: First
Date of Birth: June 3, 1887
Death: March 27, 1958

Herbert C. Legg was elected county supervisor in 1934. He was re-elected again in 1950 and 1954. On March 27, 1958, Legg died of a heart attack while in office, and was replaced by Frank G. Bonelli on June 4, 1958.

Born June 3, 1887 in Leroy, N.Y., Legg moved to California in 1923 and was a timekeeper/building contractor for a construction firm until 1931, when he began developing real estate and raising oranges on a ranch near Downey.

In 1934 he entered politics and was elected county supervisor for the First District. During his first term in office, he was active in solving the flood control problems for his district.

In 1939 he was named the Southern California administrator for the Works Progress Administration, a federally mandated program designed to provide employment for the jobless. Two years later he became the city manager of Long Beach.

During World War II, Legg was appointed chairman of President Roosevelt's Wartime Commission on Congested Areas in Southern California. He entered the contracting business near the close of the war.

He remained active in other political arenas for many years and at one time was a candidate for the Democratic gubernatorial nomination, but was beaten by Culbert Olsen.

Credits included membership in the National Association of County Officials, Knight Templar, Scottish Rite, Al Malaikah Shrine Temple, San Gabriel County Club and the Jonathon Club.

In 1950 Legg was elected to a second term as county supervisor and was nearing the close of a third term when he died. He was 70, and was survived by his wife, Helen, and daughters Martha and Bernice.

Source: Who's Who in California, 1957; Los Angeles Times, March 28, 1958.