

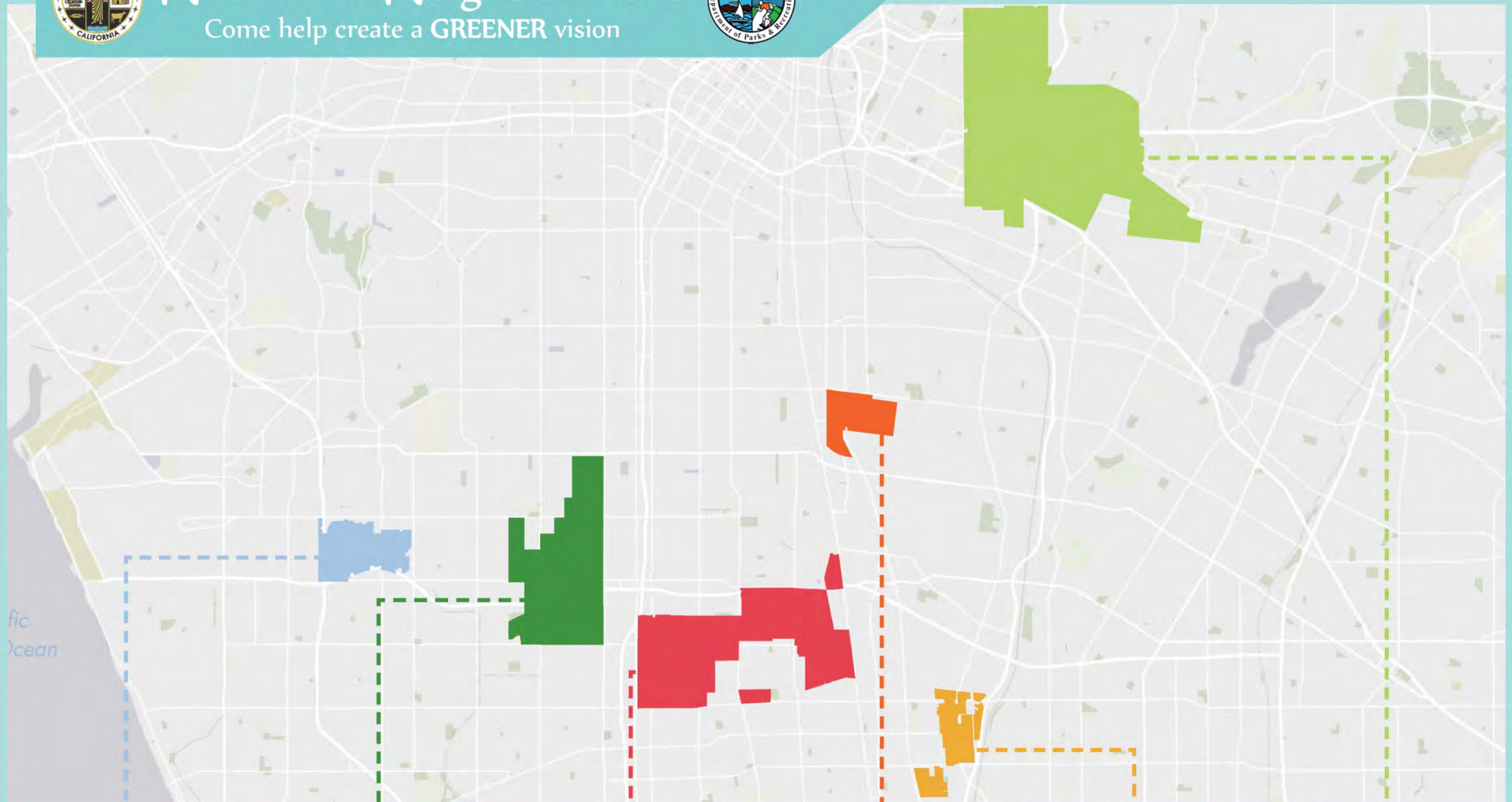


Nature for Neighborhoods

Come help create a GREENER vision



PLACEWORKS



COMMUNITY PARKS AND RECREATION PLANS

LENNOX

WEST ATHENS
- WESTMONT

WILLOWBROOK

WALNUT
PARK

EAST RANCHO
DOMINGUEZ

EAST LOS
ANGELES

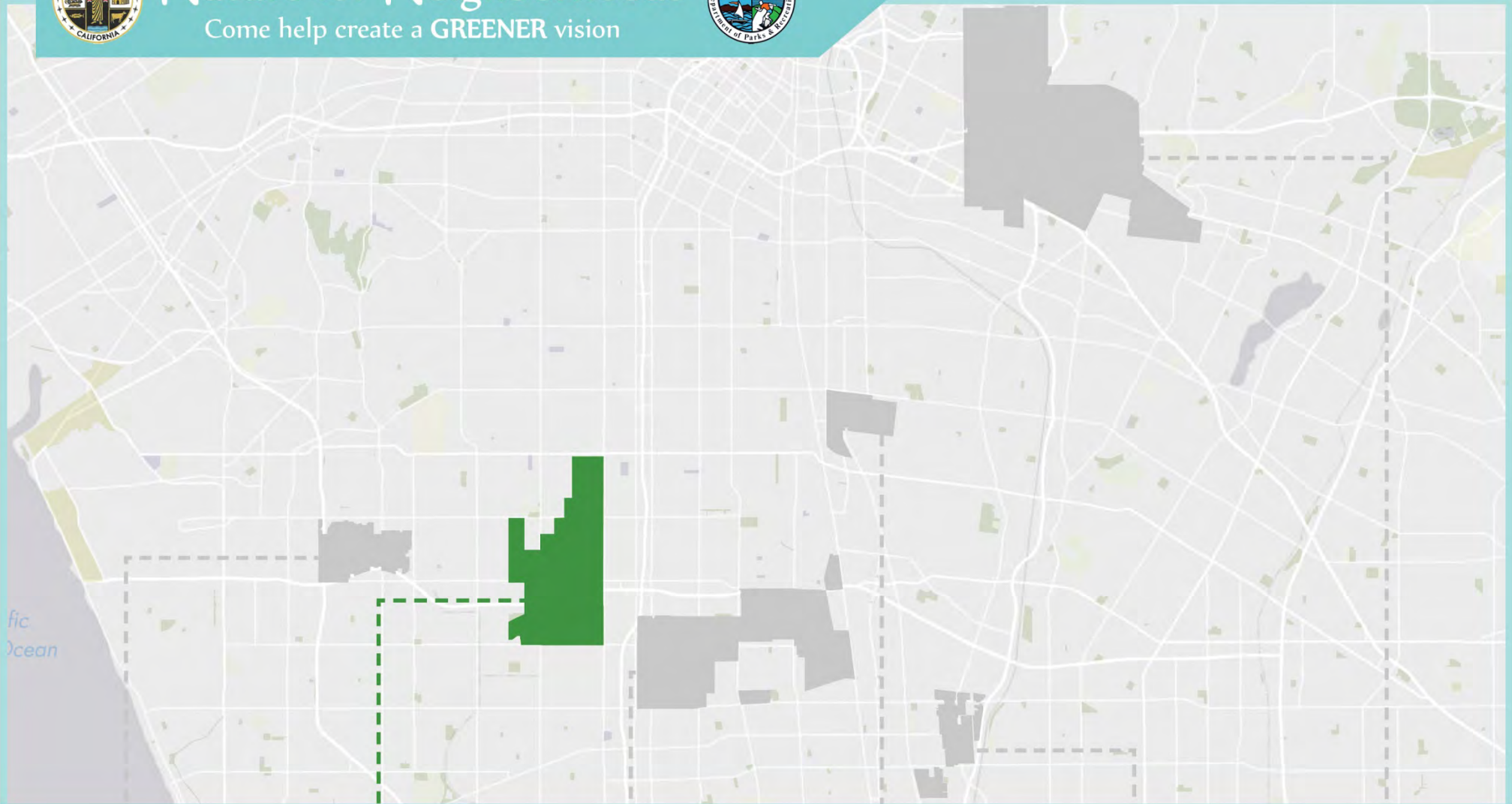


Nature for Neighborhoods

Come help create a GREENER vision



PLACEWORKS



WEST ATHENS-WESTMONT COMMUNITY DESIGN WORKSHOP

LENNOX

**WEST ATHENS
- WESTMONT**

WILLOWBROOK

WALNUT
PARK

EAST RANCHO
DOMINGUEZ

EAST LOS
ANGELES

TONIGHT'S MEETING

TALLER DE ESTA NOCHE

1. About West Athens - Westmont
Sobre West Athens-Westmont
 - Existing Conditions
Condiciones Existentes
 - Park Needs
Necesidades del parque
 - What we've heard from the Community
Lo que escuchamos de la comunidad
2. Health and Safety
Salud y Seguridad
3. Vision and Strategies
Visión y Estrategias
4. Three Opportunity Sites
Tres Sitios de Oportunidad
 - Site Conditions
Las condiciones del sitio
 - Opportunities and Limitations
Oportunidades y Limitaciones
5. Park Features
Amenidades del Parque
6. Site Design Activity
Ejercicio de Diseño del Sitio

ABOUT WEST ATHENS-WESTMONT

SOBRE WEST ATHENS-WESTMONT

West Athens-Westmont Population: 40,582

Población de West Athens-Westmont: 40,582

Los Angeles County Standard: 4 acres / 1,000 people

Norma del Condado de Los Angeles: 4 acres / 1,000 people

- Total amount of open space needed In West Athens-Westmont: 60.5 acres

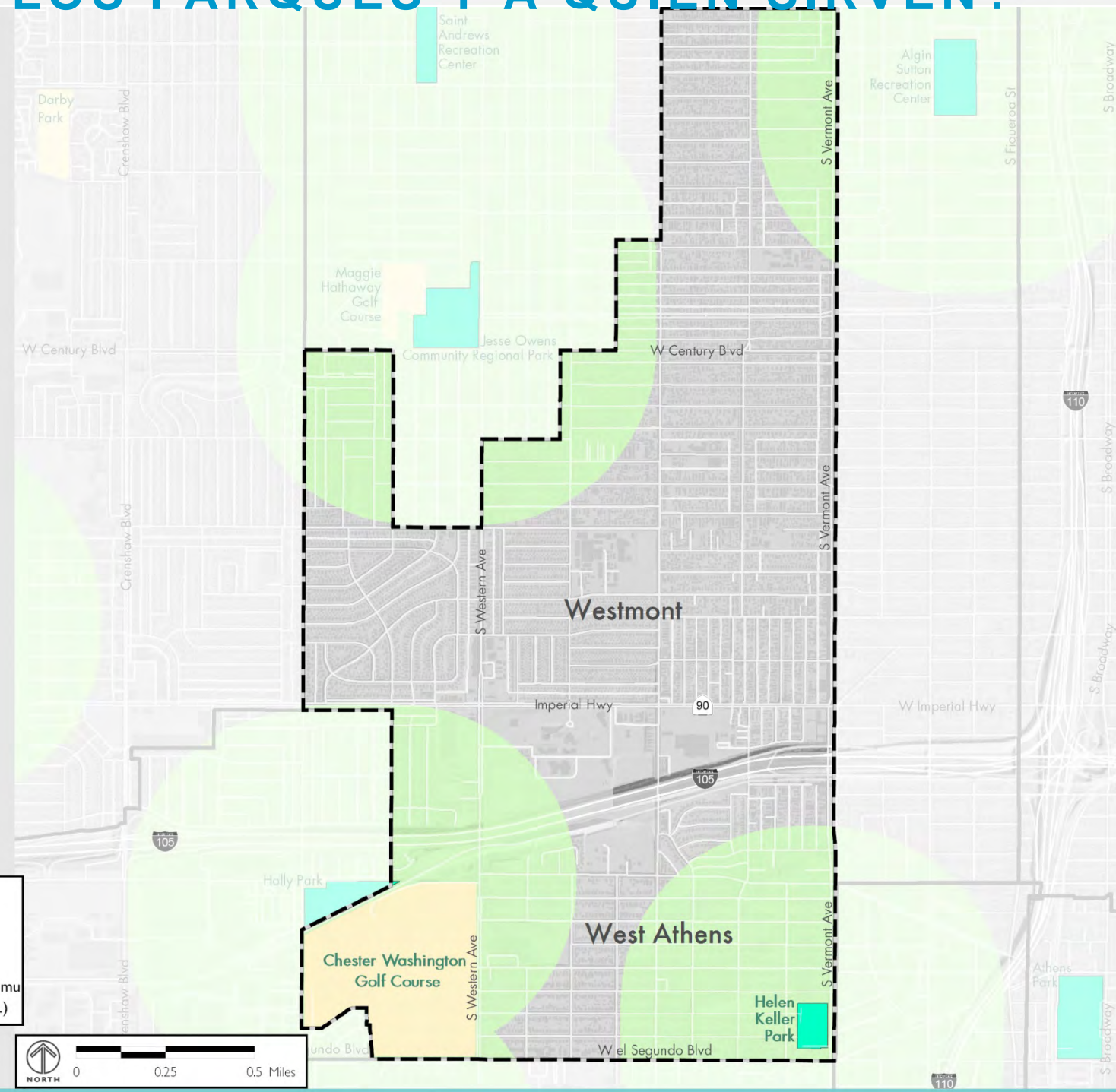
Cantidad total de espacio libre necesario en West Athens-Westmont: 60.5 acres

Existing Park Acres: 9.6 (0.2 acres/ 1,000 people)

Acres de Parques Existentes: 9.6 (0.2 acres/ 1000 personas)

WHERE ARE THE PARKS and WHO DO THEY SERVE?

¿DÓNDE ESTÁN LOS PARQUES Y A QUIÉN SIRVEN?



Park Access

- Areas Not Within 1/2 Mile of a Local Park
- 1/2 Mile Service Radius from Local Parks

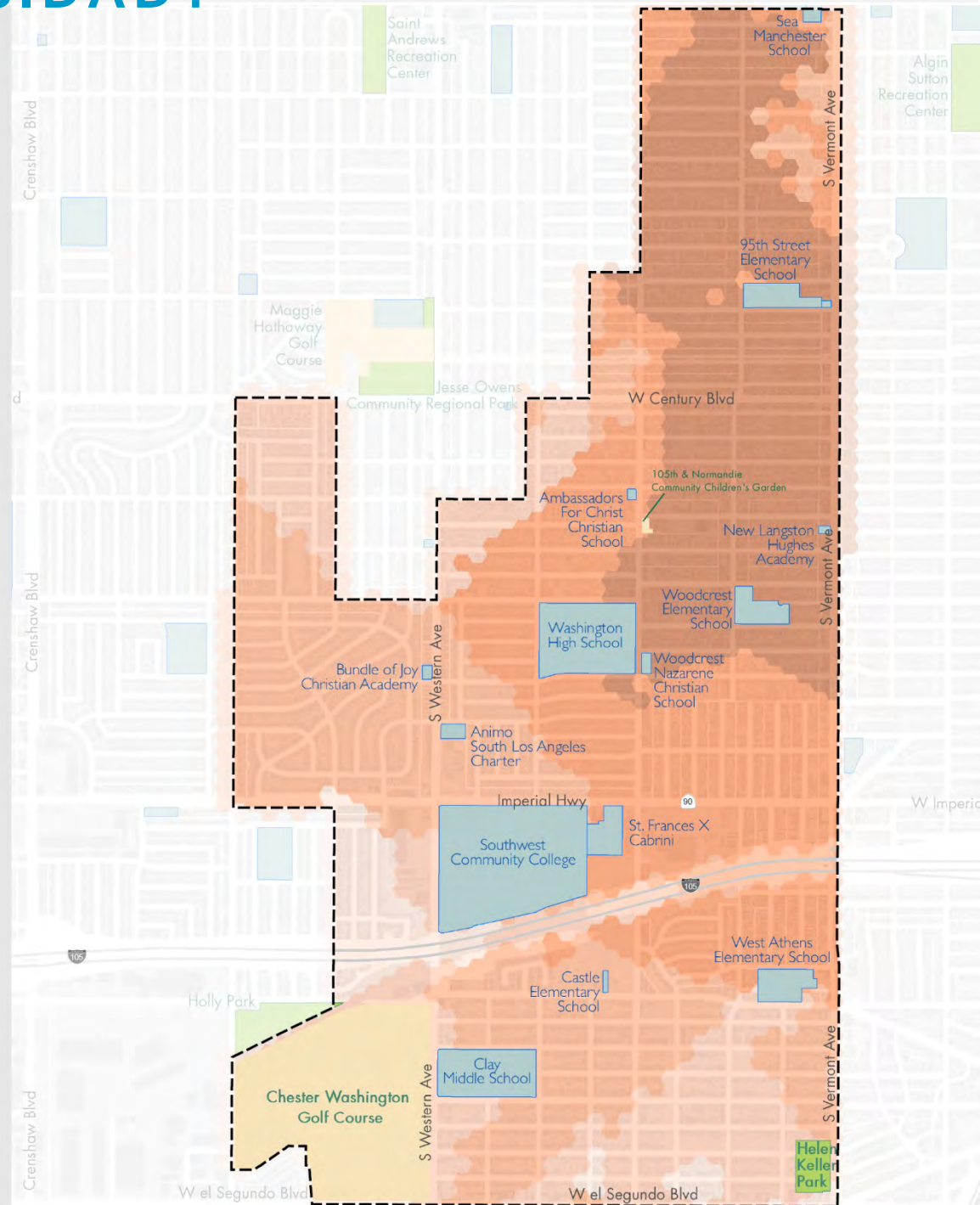
Parklands

- Parks Included in Analysis (includes parks within 1/2 mile of Commu
- Other Open Space (historical parks, golf courses, cemeteries, etc.)



WHERE IS THE NEED?

¿DÓNDE ESTÁ LA NECESIDAD?



WHAT IS IN OUR PARKS?

¿QUÉ HAY EN NUESTROS PARQUES?

	Size (Acres)	PARK AMENITIES																PLAY-GROUNDS			RECREATION AMENITIES							BUILDINGS/STRUCTURES								Security Lighting	Parking Spaces		
		Restrooms	Group Picnic Shelters	Picnic Tables	Barbecues	Splash Pads	Fitness Zone	Outdoor Stage	Vending Machines	Drinking Fountains	Art or Monument	Golf	Lake	2-5 year old	5-12 year old	2-12 year old	Soft Ball Fields	Multi-purpose Overlay Field	Soccer Fields	Football Field	Basketball Courts	Tennis Courts	Handball Courts	Skate Park	Walking Paths/Trails	Swimming Pool/Bath House	Community building	Senior Center	Offices	Gymnasium	Multi-purpose Room	Computer Lab	Library	Concession Stand	Commercial Kitchen			Sheriff's Office	
Hellen Keller Park (under renovation)	9.56	1	1									1	1		1	1				1																		50	
Chester Washington Golf Course	124.91										1	2																		2		2							500

- Upgrades to Hellen Keller Park

COMMUNITY OUTREACH

AYUDA SOCIAL

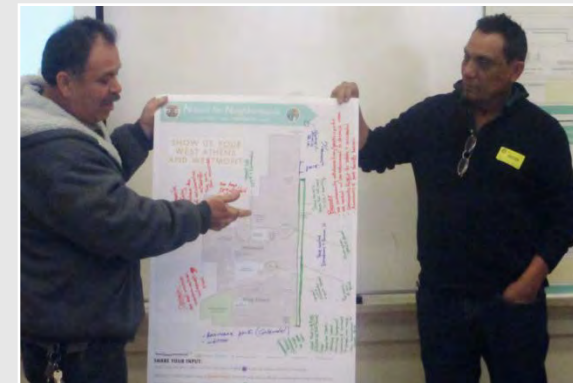
■ 200 Community Surveys *Encuestas Comunitarias*

■ 9 Stakeholder Meetings *Reuniones*

- South Los Angeles Youth Activities League (YAL)
- Reclaiming America's Community through Empowerment (RACE)
- St. John's Well Child and Family Center
- St. Francis Xavier Cabrini Catholic Church and School
- First Christian Fellowship
- Hale Morris Lewis Manor
- Southwest Community Association
- Department of Parks and Recreation

■ 3 Focus Groups *Grupos de Enfoque*

- Seniors
- Parents
- Youth



■ 2 Community Workshops *Talleres comunitario*

■ 1 Youth Activity *Actividad para Jóvenes*

WHAT WE DID

LO QUE HICIMOS

WEST ATHENS - WESTMONT

KEY ISSUES

PREOCUPACIONES IMPORTANTES

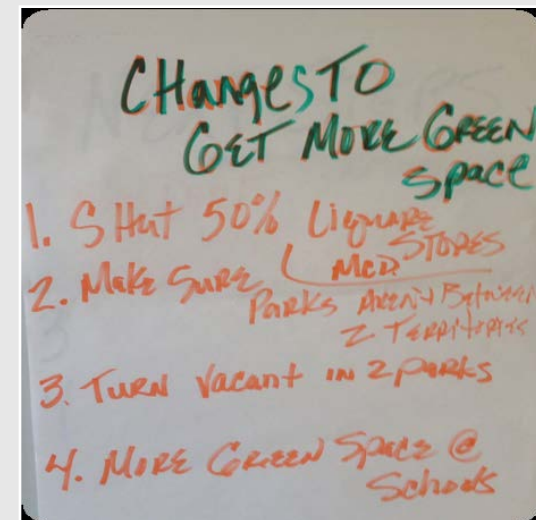
- PARKS AND OPEN SPACE *PARQUES Y ESPACIOS VERDES*
 - Need for new green space *Necesidad de nuevos espacios verdes*
 - Helen Keller Park is not currently accessible *Parque de Helen Keller no está accesible*
- COMMUNITY SAFETY *SEGURIDAD de la COMUNIDAD*
 - Residents feel very insecure in public spaces *Residentes no se sienten seguros en los espacios públicos*
 - Safe pedestrian and bike corridors *Pasillos para peatones y bicicletas seguras*
- SPACES FOR YOUTH *ESPACIOS PARA JÓVENES*
 - Youth activities and spaces for youth recreation *Actividades de los jóvenes y el espacio para la recreación juvenil*
- PLACES TO EXERCISE *LUGARES PARA EJERCER*
 - Walking paths, exercise equipment, multi-use spaces for sports *Senderos, equipos de ejercicio, espacios para el deporte*

WHAT WE HEARD FROM YOU
LO QUE ESCUCHAMOS DE USTEDES
WEST ATHENS - WESTMONT

COMMUNITY SUGGESTIONS

SUGERENCIAS DE LA COMUNIDAD

- Transform **VACANT LOTS** into green space
Cambiar TERRENOS BALDÍOS en el espacio verde
- Partner with **SCHOOLS** to create new green space
Asociarse con las ESCUELAS para crear más espacios verdes
- Create spaces for older youth: **SKATEPARK, BASKETBALL COURTS, WATER PARKS**
Crear espacios para jóvenes mayores
PARQUES DE PATINAJE, CANCHAS DE BALCONCESTO, PARQUES ACUÁTICOS



WHAT WE HEARD FROM YOU
LO QUE ESCUCHAMOS DE USTEDES
WEST ATHENS - WESTMONT

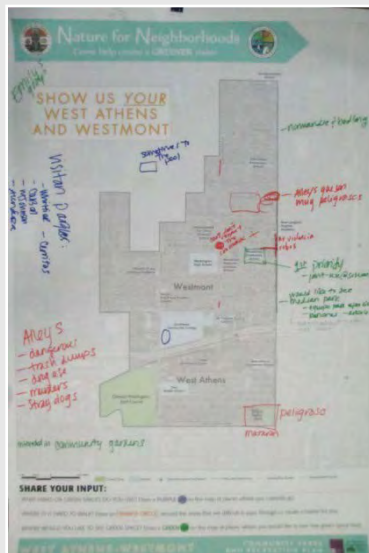
COMMUNITY SUGGESTIONS

SUGERENCIAS DE LA COMUNIDAD



■ Safety *Seguridad*

- Community ownership of the spaces
Dueno comunitario de los espacios
- Collaboration with Sheriff's department
Colaboración con la policía



■ Focused attention on crime hotspots *Enfoque en áreas de alto crimen*

- S. Vermont Ave
- W. El Segundo Blvd
- Alleyways

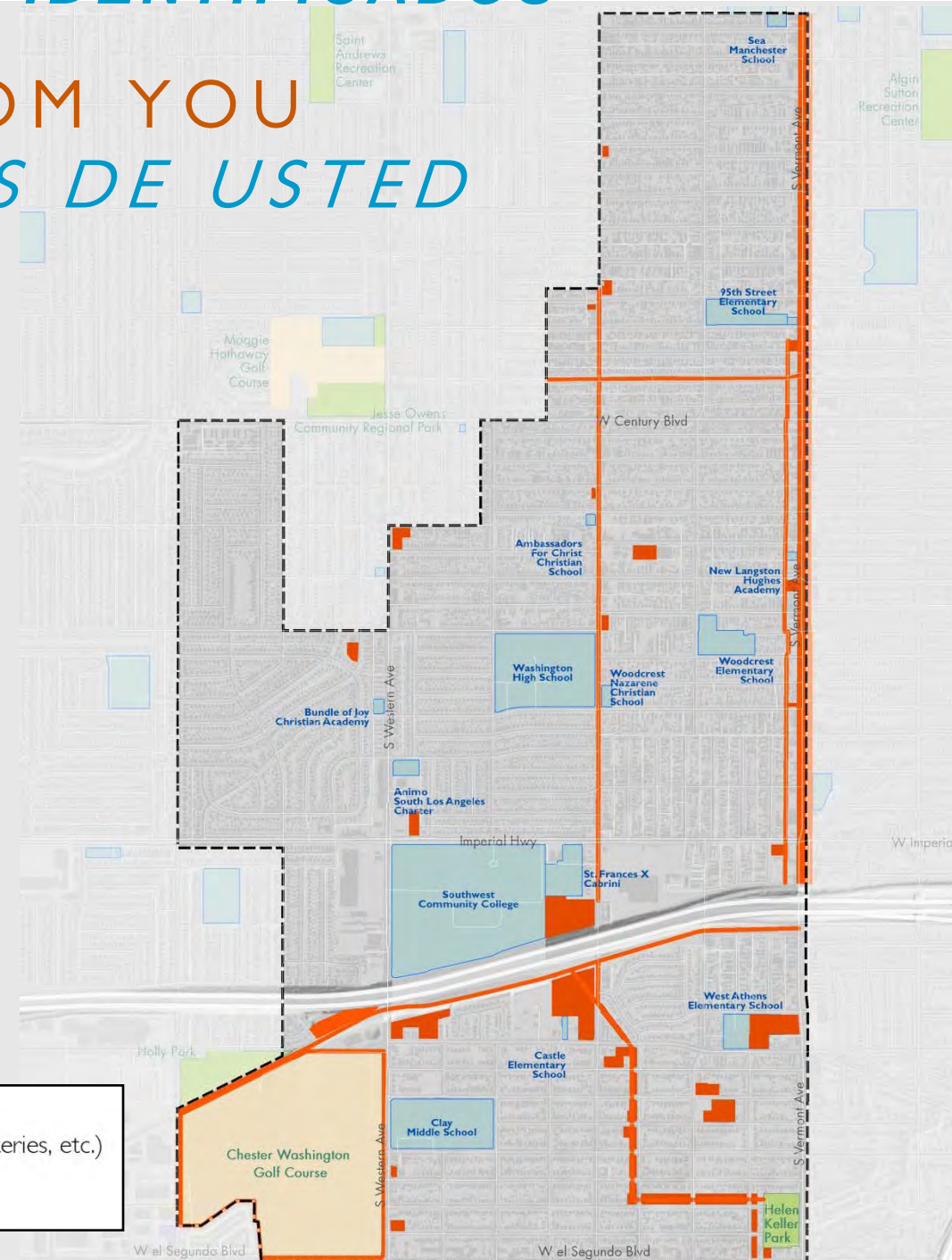
WHAT WE HEARD FROM YOU
LO QUE ESCUCHAMOS DE USTEDES
WEST ATHENS - WESTMONT

COMMUNITY IDENTIFIED SITES

SITIOS DE LA COMUNIDAD IDENTIFICADOS

WHAT WE HEARD FROM YOU
LO QUE ESCUCHAMOS DE USTED

- Existing and Planned Parks
- Other Open Space (historical parks, golf courses, cemeteries, etc.)
- Schools
- Opportunity Sites Identified by the Community



SUMMARY OF NEEDS

RESUMEN DE LAS NECESIDADES

**NEW GREEN SPACE
IN AREAS W/O PARKS**
*ESPACIOS VERDES EN
LUGARES SIN PARQUES*



**SAFE OPEN
SPACES**
ESPACIOS SEGUROS



**SAFE CONNECTION
ROUTES**
*CONEXIONES
SEGURAS*



WHAT TO INCLUDE IN NEW PARKS? *LO QUE DEBE INCLUIR NUEVOS PARQUES*

**OPPORTUNITIES
TO WALK**
*OPPORTUNIDADES
PARA CAMINAR*



**EXERCISE AND
FITNESS**
*EJERCICIO Y
SALUD FÍSICA*



SPACES TO PLAY
*ESPACIOS PARA
JUGAR*



**SPACES FOR OLDER
YOUTH**
*ESPACIOS PARA
JÓVENES MAYORES*



**SAFE AND
GREEN**

***SEGURO Y
VERDE***

**Active Corridors and
Nodes in West Athens
and Westmont**

*Corredores y nodos
activos en West
Athens y Westmont*

STRATEGIES

ESTRATEGIAS

- Utilize **infrastructure** to create safe pathways and connections. *Utilizar la **infraestructura** para crear rutas y conexiones seguras*
- Activate **vacant land** to create sense of protected community space. *Activar **terrenos baldíos** para crear sensación de espacio protegido de la comunidad.*
- Create nodes for seniors for **exercise** and **healthy living**. *Crear nodos para las personas mayores para **el ejercicio y la vida sana**.*
- Design spaces for **children and youth** to safely recreate. *Diseñar los espacios para **niños y jóvenes** para recrear de manera segura.*

SAFE AND
GREEN

SEGURO Y
VERDE

EMPHASIS ON SAFETY

ÉNFASIS EN SEGURIDAD

SAFE AND GREEN
SEGURO Y VERDE

- Parks after Dark. *Parques después del anochecer*



- Sheriff's Youth Activities League (YAL). *Liga de Actividades Juveniles*



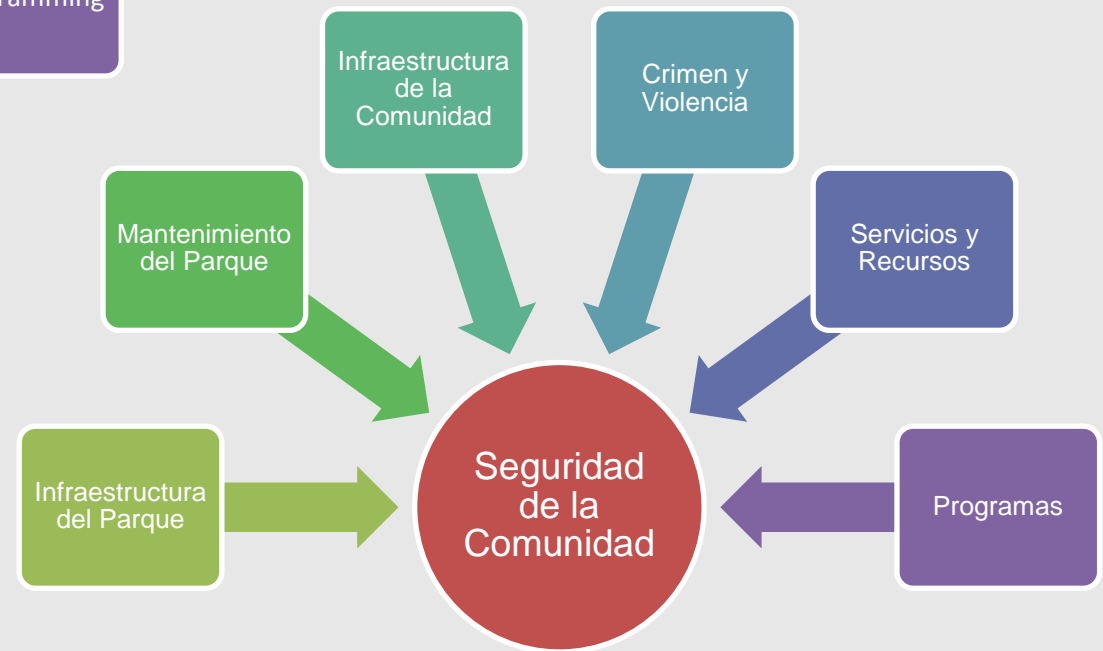
- Utility corridor parks.
Parques en los corredores de servicios públicos.



WHAT IS HAPPENING IN LA COUNTY
LO QUE ESTÁ PASANDO EN CONDADO DE LA
WEST ATHENS - WESTMONT

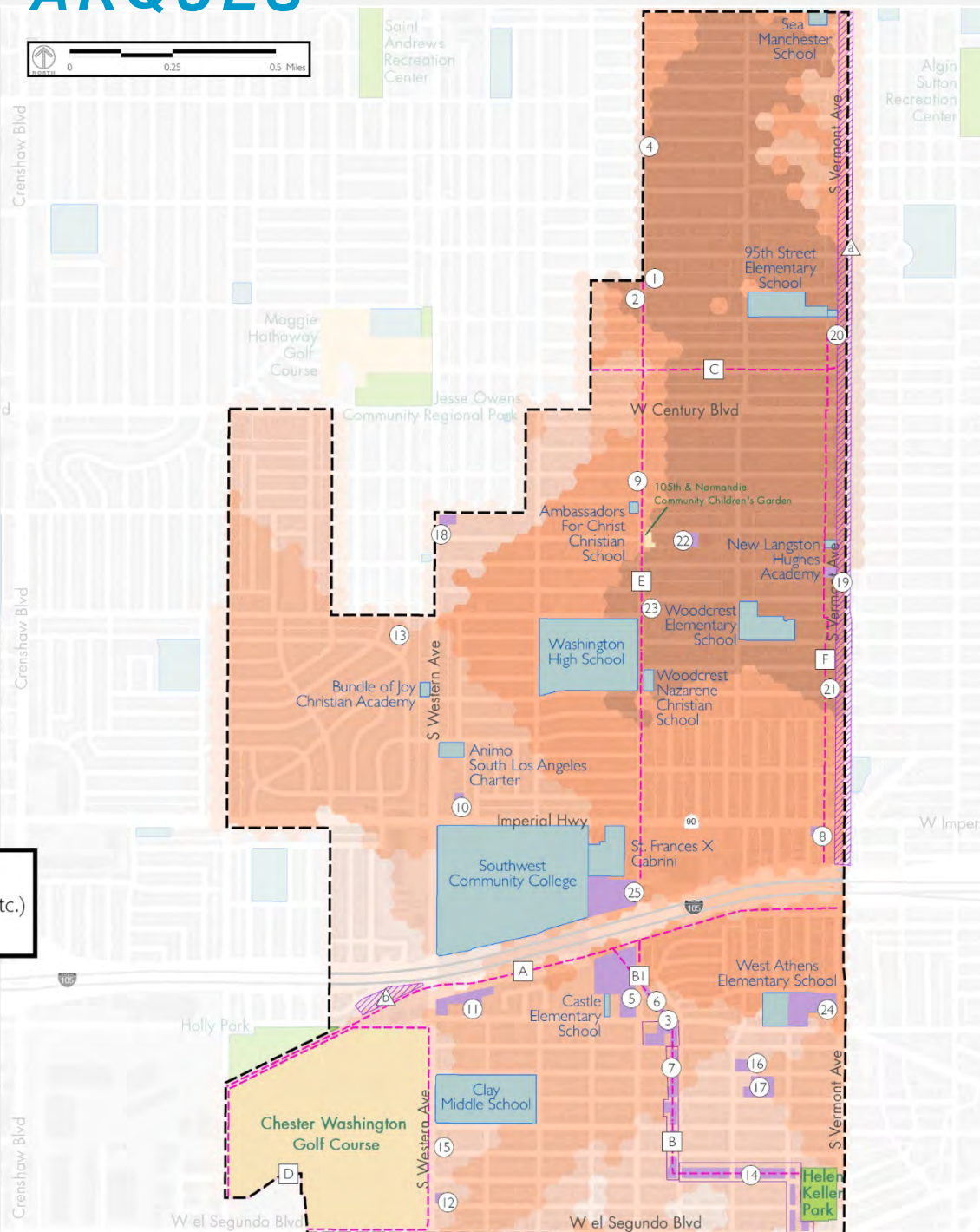
EMPHASIS ON SAFETY

ÉNFASIS EN SEGURIDAD



PARKLAND OPPORTUNITIES

OPORTUNIDADES PARA PARQUES



- Existing and Planned Parks
- Other Open Space (historical parks, community gardens, golf courses, cemeteries, etc.)
- Schools

Park Need	 Parkland Opportunities
 20 - 24 - Very High	 Potential Walking Trails
 16 - 20 - High	 Potential Infrastructure Improvements
 12 - 16 - Moderate	
 8 - 12 - Low	
 5 - 8 - Very Low	

SELECTING THE FIRST PROJECTS

SELECCIÓN DE LOS PRIMEROS PROYECTOS

NEED



NECESIDAD

SIZE



ESPACIO

TIMING



TIEMPO

OWNERSHIP



PROPIETARIO

PRIORITY
PROJECTS

*PROYECTOS
PRIORITARIOS*

FIRST PRIORITIES

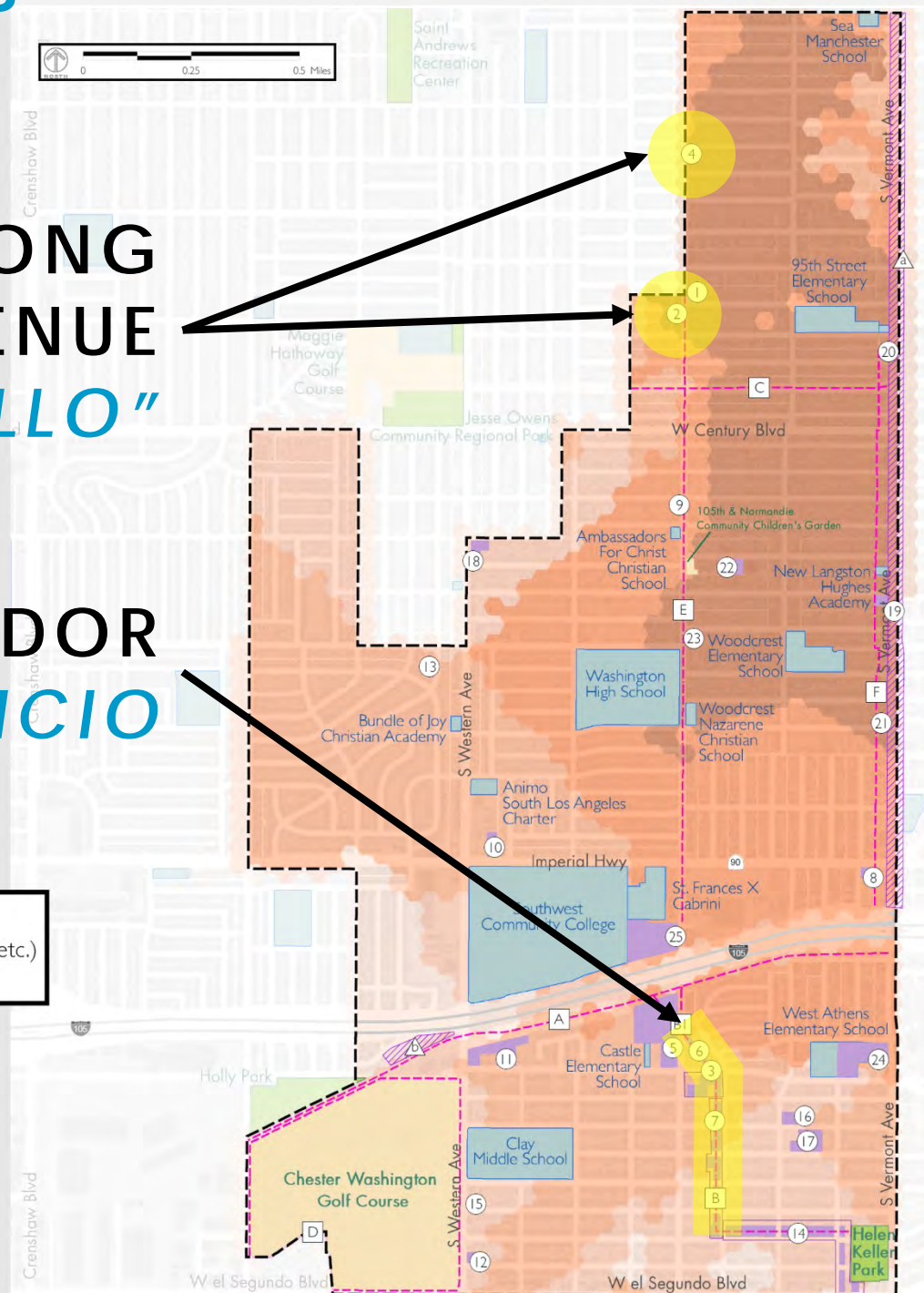
PRIMEROS PRIORIDADES

POCKET PARKS ALONG NORMANDIE AVENUE PARQUES DE "BOLSILLO"

UTILITY CORRIDOR PASILLO DE SERVICIO

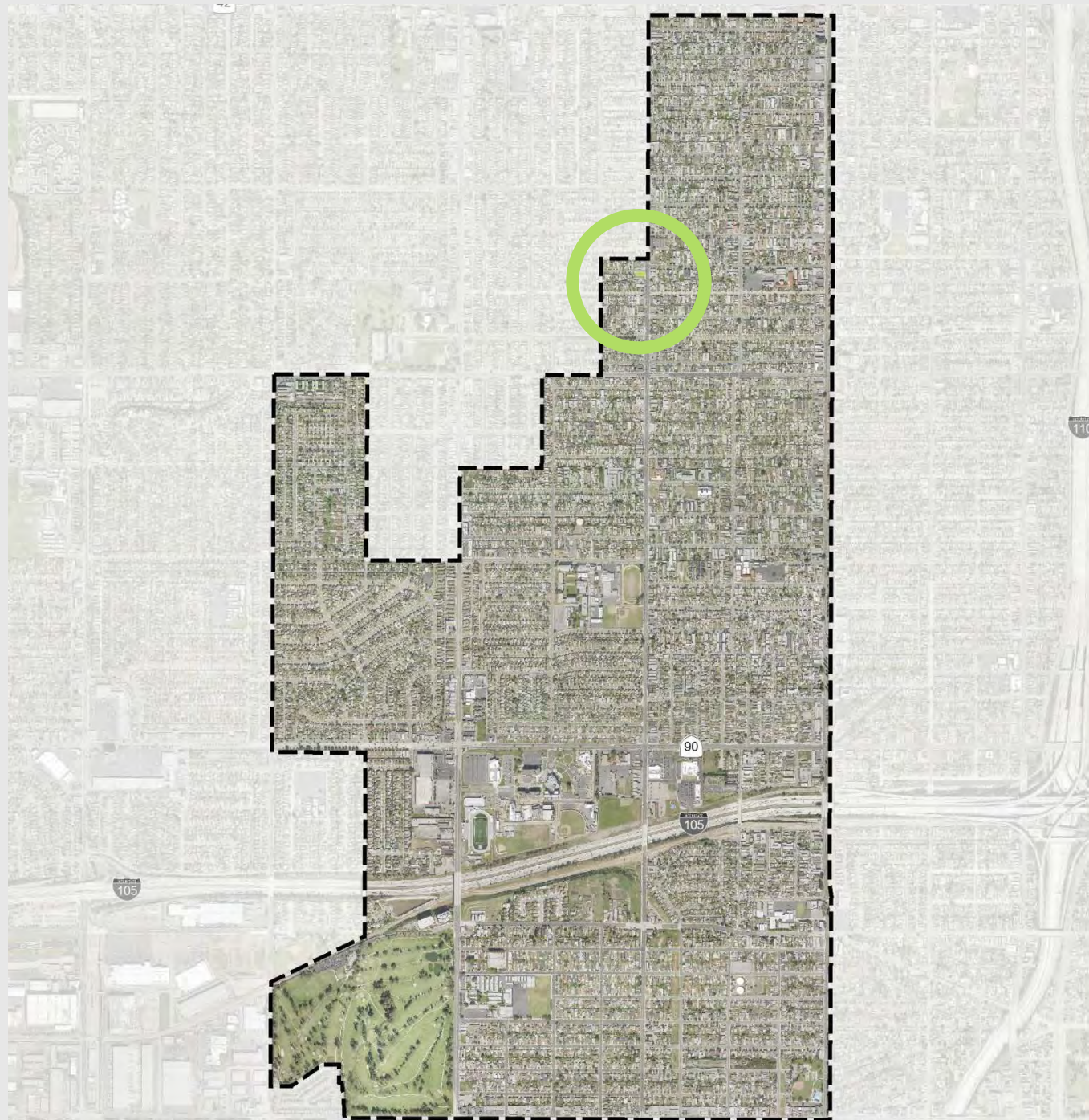
- Existing and Planned Parks
- Other Open Space (historical parks, community gardens, golf courses, cemeteries, etc.)
- Schools

- | | |
|--|---|
| Park Need | Parkland Opportunities |
| 20 - 24 - Very High | Potential Walking Trails |
| 16 - 20 - High | Potential Infrastructure Improvements |
| 12 - 16 - Moderate | |
| 8 - 12 - Low | |
| 5 - 8 - Very Low | |



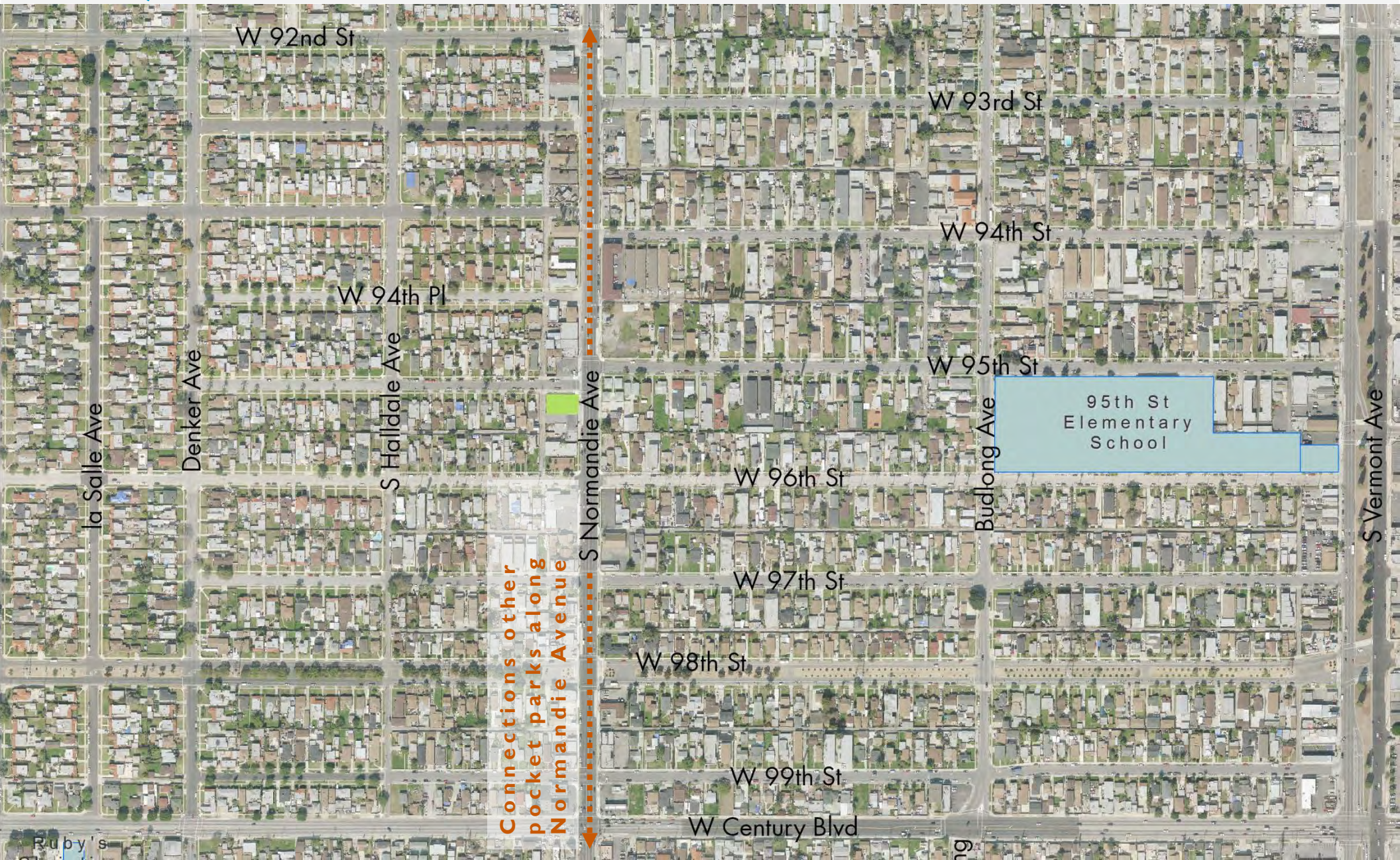
POCKET PARK: SITE 2

PARQUE DE BOLSILLO: SITIO 2



POCKET PARK: SITE 2

PARQUE DE BOLSILLO: SITIO 2



CONTEXT AND CONNECTIONS

CONTEXTO Y CONEXIONES

POCKET PARK: SITE 2

PARQUE DE BOLSILLO: SITIO 2



W 95th St

S Normandie Ave

**IPM
Adult
Day
Program**

SITE CONDITIONS
CONDICIONES DEL SITIO

Total Size: 0.2 acres

WEST ATHENS - WESTMONT

POCKET PARK: SITE 2
PARQUE DE BOLSILLO: SITIO 2



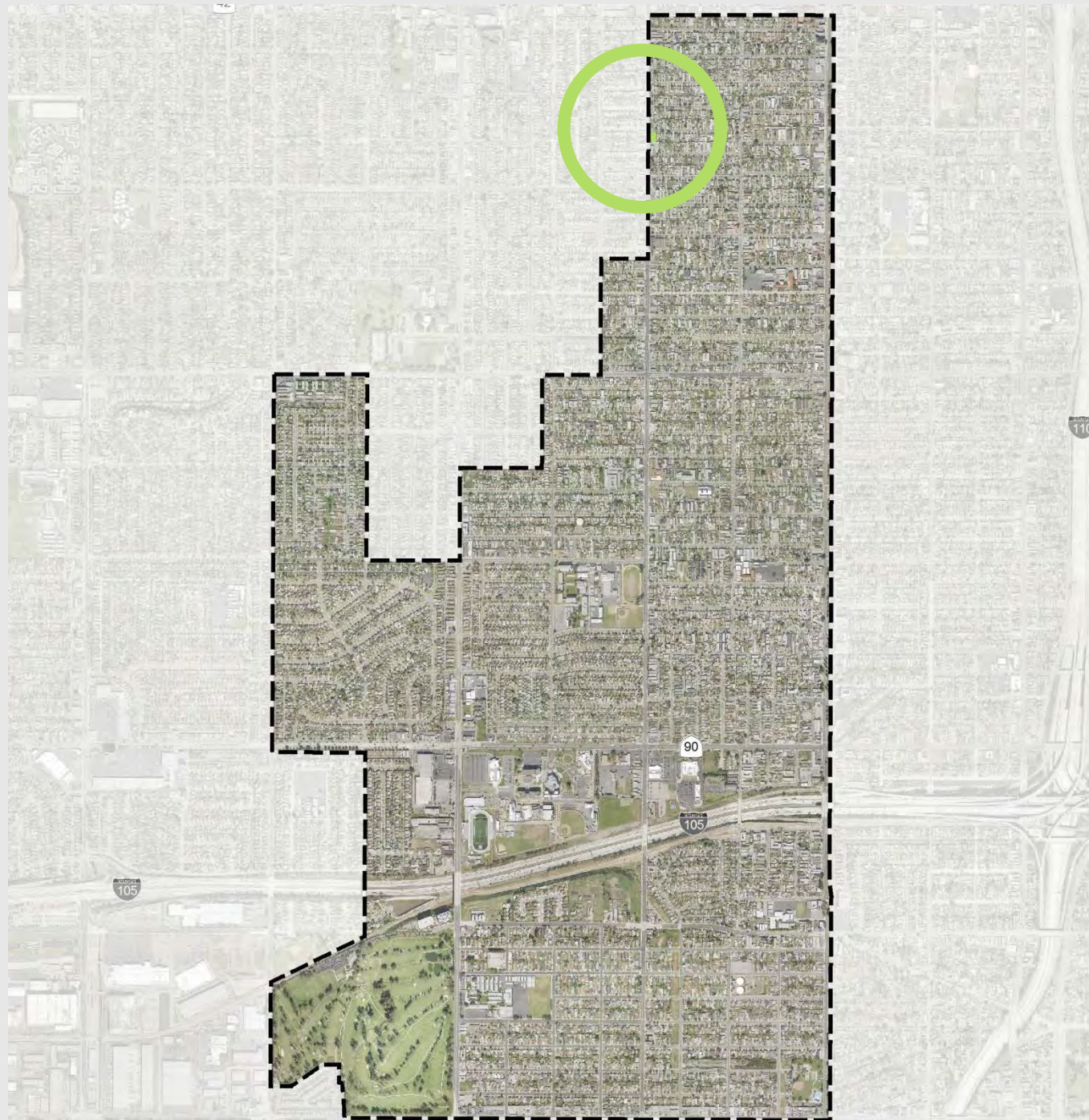
**W. 95TH
STREET**

NORMANDIE AVENUE

SITE CONDITIONS
CONDICIONES DEL SITIO

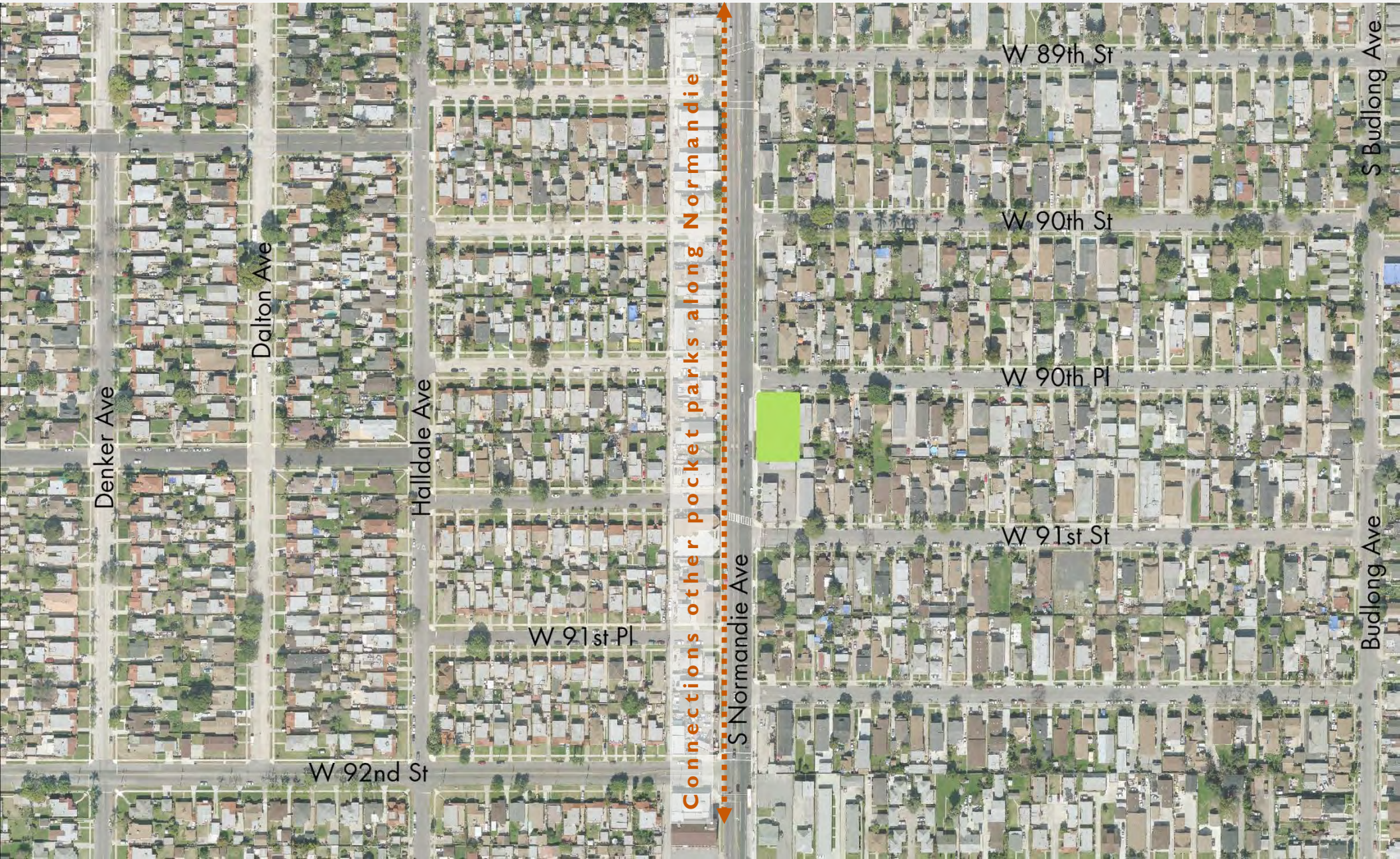
POCKET PARK: SITE 4

PARQUE DE BOLSILLO: SITIO 4



POCKET PARK: SITE 4

PARQUE DE BOLSILLO: SITIO 4



CONTEXT AND CONNECTIONS

CONTEXTO Y CONEXIONES

POCKET PARK: SITE 4

PARQUE DE BOLSILLO: SITIO 4



SITE CONDITIONS
CONDICIONES DEL SITIO

Total Size: 0.25 acres

POCKET PARK: SITE 4

PARQUE DE BOLSILLO: SITIO 4



W. 90TH PLACE

NORMANDIE AVENUE



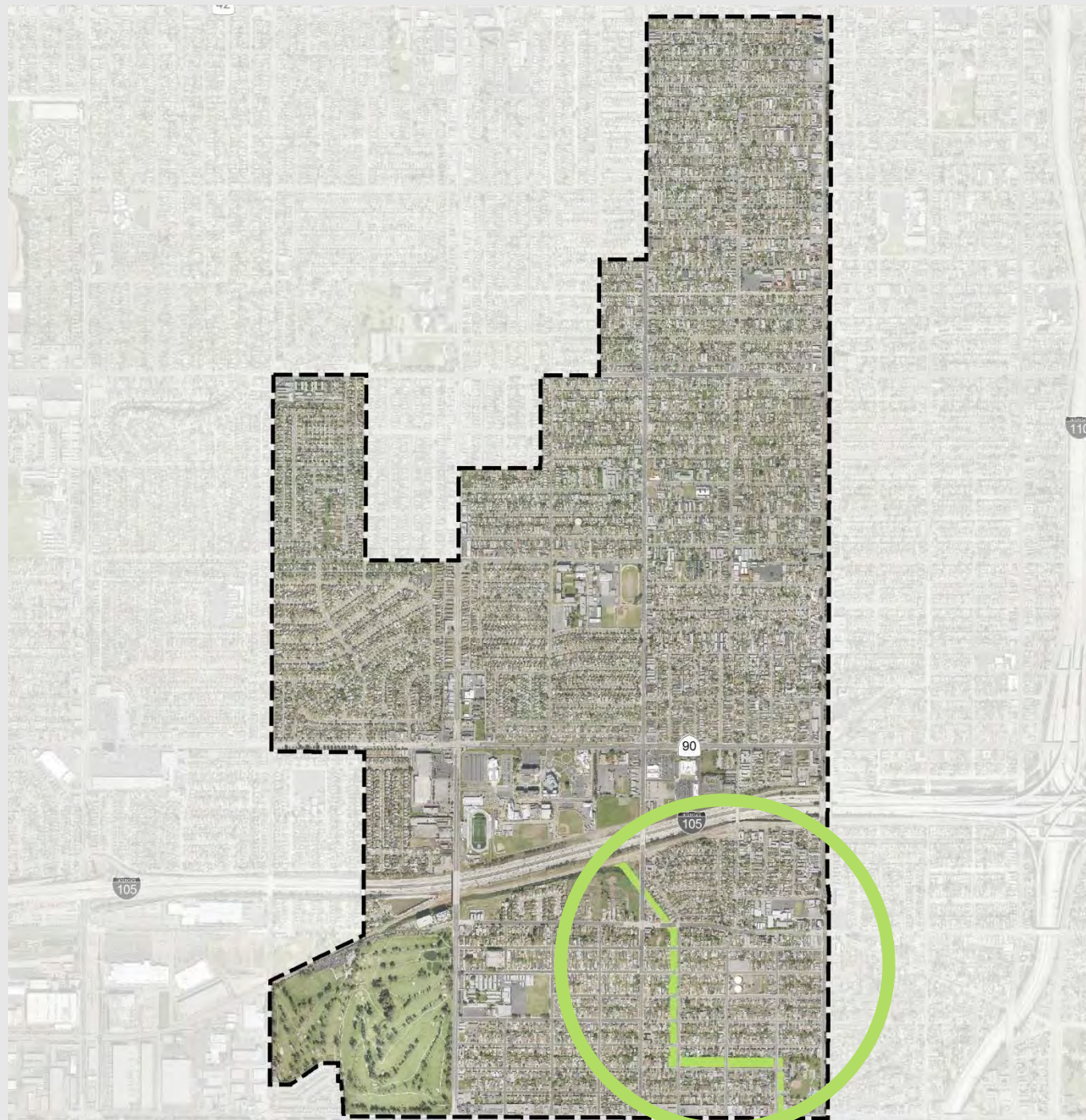
SITE CONDITIONS

CONDICIONES DEL SITIO

WEST ATHENS - WESTMONT

UTILITY CORRIDOR

PASILLO DE SERVICIO



WEST ATHENS - WESTMONT

UTILITY CORRIDOR

PASILLO DE SERVICIO



CONTEXT AND CONNECTIONS

CONTEXTO Y CONEXIONES

UTILITY CORRIDOR *PASILLO DE SERVICIO*

Northern Section



Middle



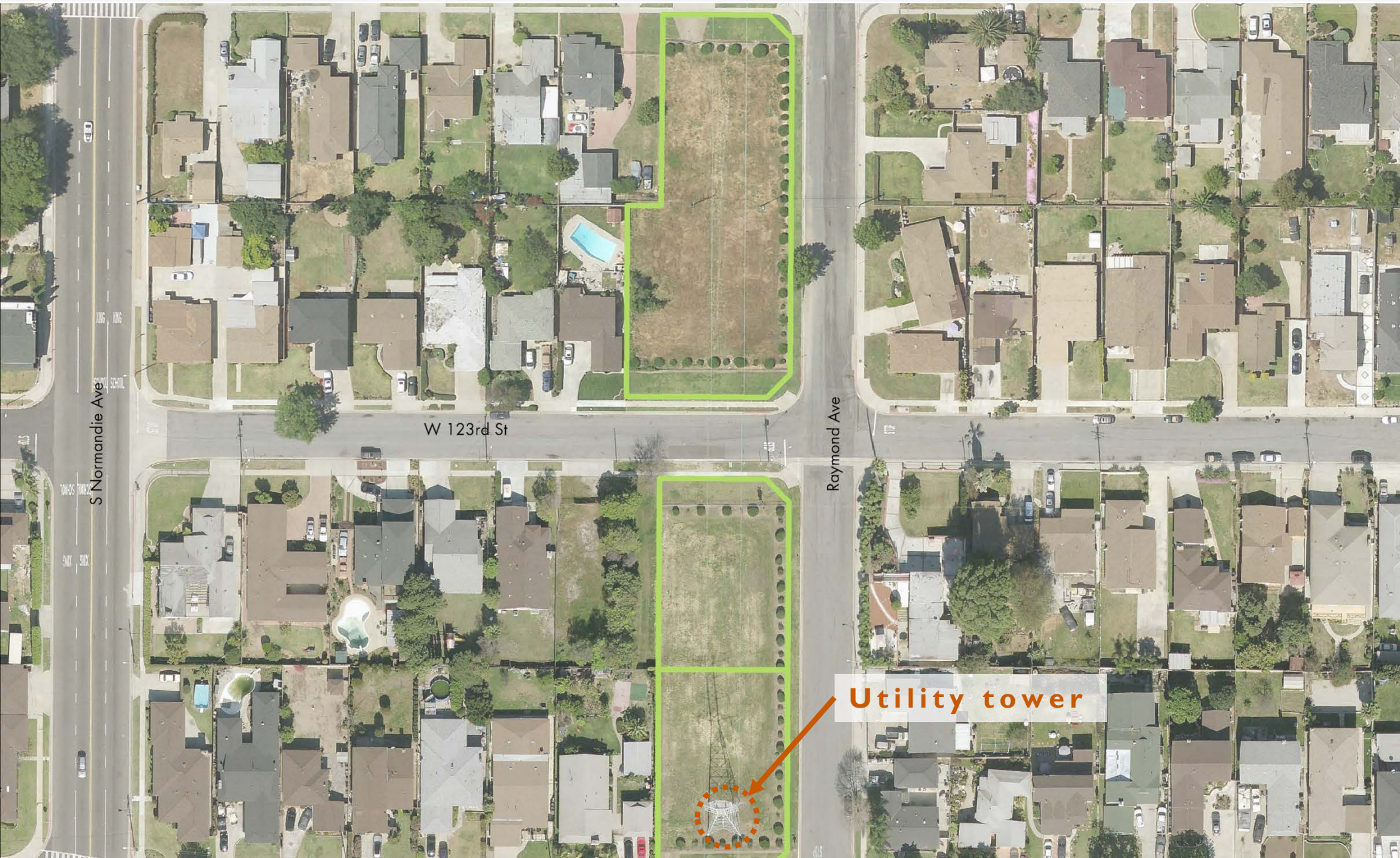
Southern



CONTEXT AND CONNECTIONS *CONTEXTO Y CONEXIONES*

UTILITY CORRIDOR

PASILLO DE SERVICIO



SITE CONDITIONS

CONDICIONES DEL SITIO

UTILITY CORRIDOR *PASILLO DE SERVICIO*



Residential properties

Overhead power lines

Utility tower

Approx. 100' wide

SITE CONDITIONS *CONDICIONES DEL SITIO*

SITE DESIGN

SITIO DISEÑO

TOOLBOX OF PARK FEATURES

HERRAMIENTAS PARA EL DISEÑO DE LOS PARQUES

WEST ATHENS-WESTMONT COMMUNITY DESIGN WORKSHOP
08.19.2014

VISUAL INSPIRATION

Inspirational images for
designing new open spaces.



 **Nature for Neighborhoods**
Come help create a GREENER vision 

EXERCISE *EJERCICIO*



Fitness Equipment



Stationary Bicycles



Exercise Nodes

Considerations: *Consideraciones:*

- Surface material *Materiales del piso*
- Signage *Signos*
- Types of exercise *Tipos de ejercicio*
- Where would they be most used? *¿A dónde serían más utilizados?*

SPORTS

DEPORTES



Futsal



Ping Pong



Tennis



Multipurpose Field



Basketball

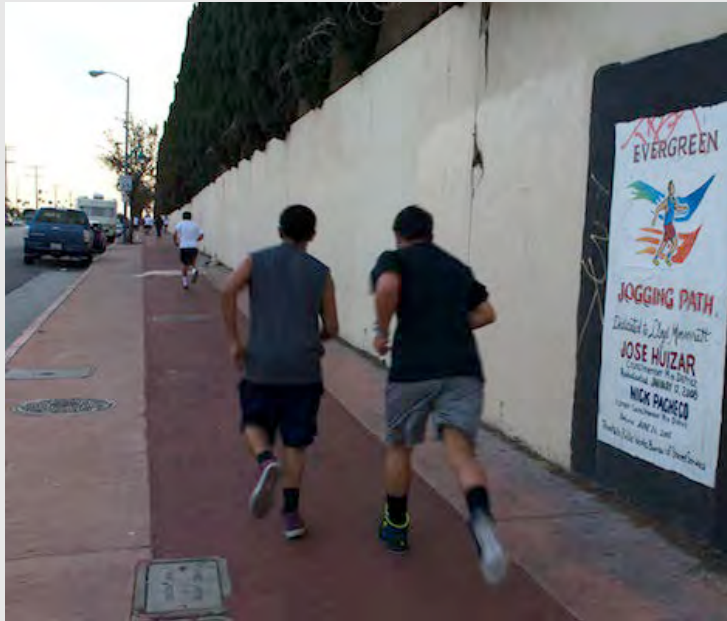
Considerations:

Consideraciones:

- Size *Tamaño*
- Sports preference
Deportes preferidos
- Surface material
Materiales del piso

WALKING/RUNNING TRAIL

SENDEROS PARA CAMINANDO Y CORRIENDO



Rubberized Surface



Concrete Path



DG path



Paved Path

Considerations: *Consideraciones:*

- Surface material (one type, multiple types) *Materiales del piso (un tipo, tipo múltiple)*
- Modes (pedestrian, bike, skate board, horse) *Modos de transportación (a pie, en bicicleta, en patineta, el caballo)*
- Stopping points/resting place *Lugares para parar o descansar*

PATHWAYS *SENDAS*



Meandering



Arcing



Linear



Width Change

Considerations: *Consideraciones:*

- Direction
Dirección
- Nodes *Nodos*
- Purpose of path
(running, walking, biking, equestrian)
*Propósito de la senda
(correr, caminar, ir en
bicicleta, montar a
caballo)*

PLAY

LUGARES PARA JUGAR



Considerations: *Consideraciones:*

- Surface material
Materiales del piso
- Play elements
Elementos de juegos
- Age groups
Grupos de edad
- Accessibility
Accesibilidad
- Feature colors
Colores
- Water features
Características de agua

SPECIAL USES

USOS ESPECIALES



Skateboard or BMX Park



Community Garden



Performance Space

Considerations:

Consideraciones:

- Are there any amenities missing in neighborhood?
¿Hay servicios que faltan en la comunidad?

GATHERING *REUNIÓN*



The Plaza at Harvard
Stoss Landscape Urbansism

Playful Shape



Shading



Cooking



Metal



Wood

Considerations: *Consideraciones:*

- Types of seating
Tipos de sillas
- Types of tables
Tipos de mesas
- Ability to cook
Herramientas para cocinar
- Site furniture needs (bike racks, trash and recycling, dogi-pots)
Otros muebles necesarios
- Shade needs
Sombras necesarias

KIOSKS AND SIGNAGE

QUIOSCOS Y CARTELES



Considerations:

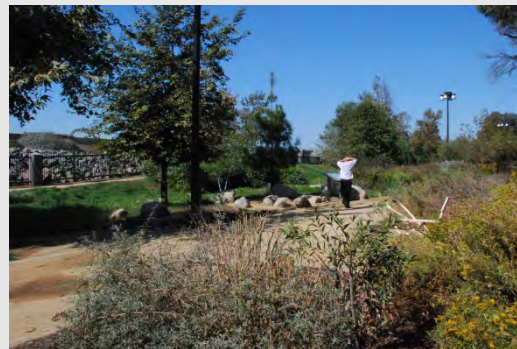
Consideraciones:

- Trailhead needs *Necesidades para el fuente de la senda*
- Informational needs *Necesidades de información*
- Is the community allowed to post? *¿Puedo poner información miembros de la comunidad?*

TREES AND PLANTING

ARBOLES Y PLANTAS

Tree Types



Naturalistic Planting

Formal Planting

Native

Considerations:

Consideraciones:

- Evergreen or deciduous
Tipos de arboles
- Large trees or small ones
Grandes o pequeños
- Flowers *Flores*
- Grass *Césped*

ART

ARTE



Fitness Theme



Community Theme



© Rafael Rivera 2013

Interactive Piece

Considerations:

Consideraciones:

- Themes of the piece *Temas del sitio*
- Medium (mural, sculpture, etc.) *Medio (mural, escultura, etc.)*

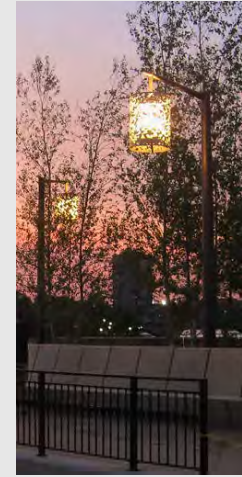
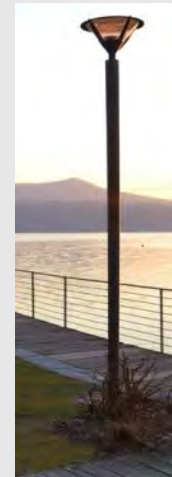
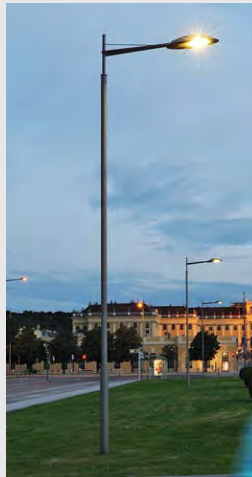
SAFETY

SEGURIDAD

Fence



Lighting



Considerations:

Consideraciones:

- Access Points
Puntos de acceso
- Style of lighting
Estilo de luces
- Security cameras
Cameras de seguridad
- Visibility *Visibilidad*
- Lines of sight and good observation points for law enforcement
Vista y observación para la policía

SITE DESIGN ACTIVITY

EJERCICIO DE DISEÑO DEL SITIO



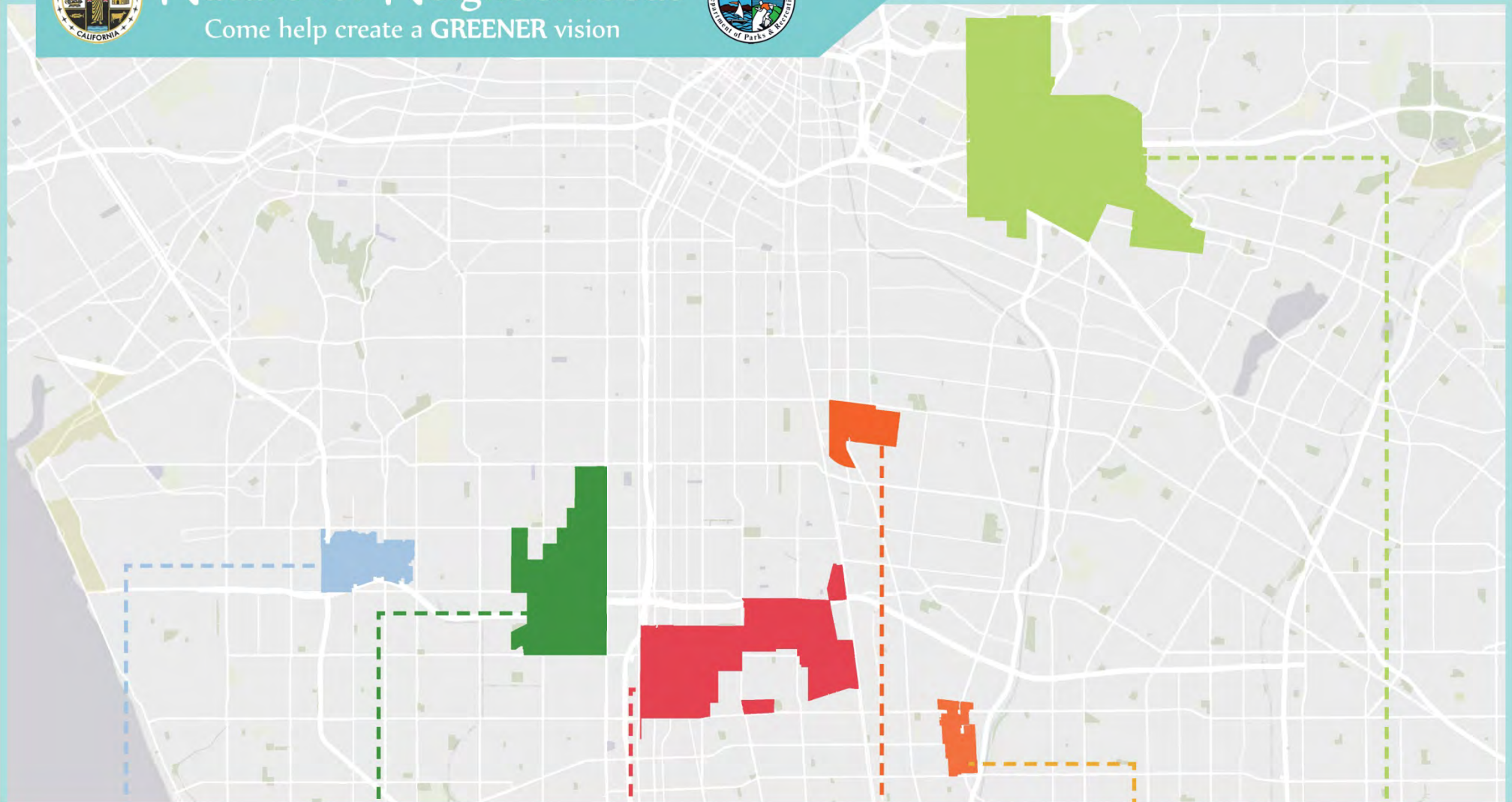


Nature for Neighborhoods

Come help create a GREENER vision



PLACEWORKS



COMMUNITY PARKS AND RECREATION PLANS

LENNOX

WESTMONT-
WEST ATHENS

WILLOWBROOK

WALNUT
PARK

EAST RANCHO
DOMINGUEZ

EAST LOS
ANGELES