

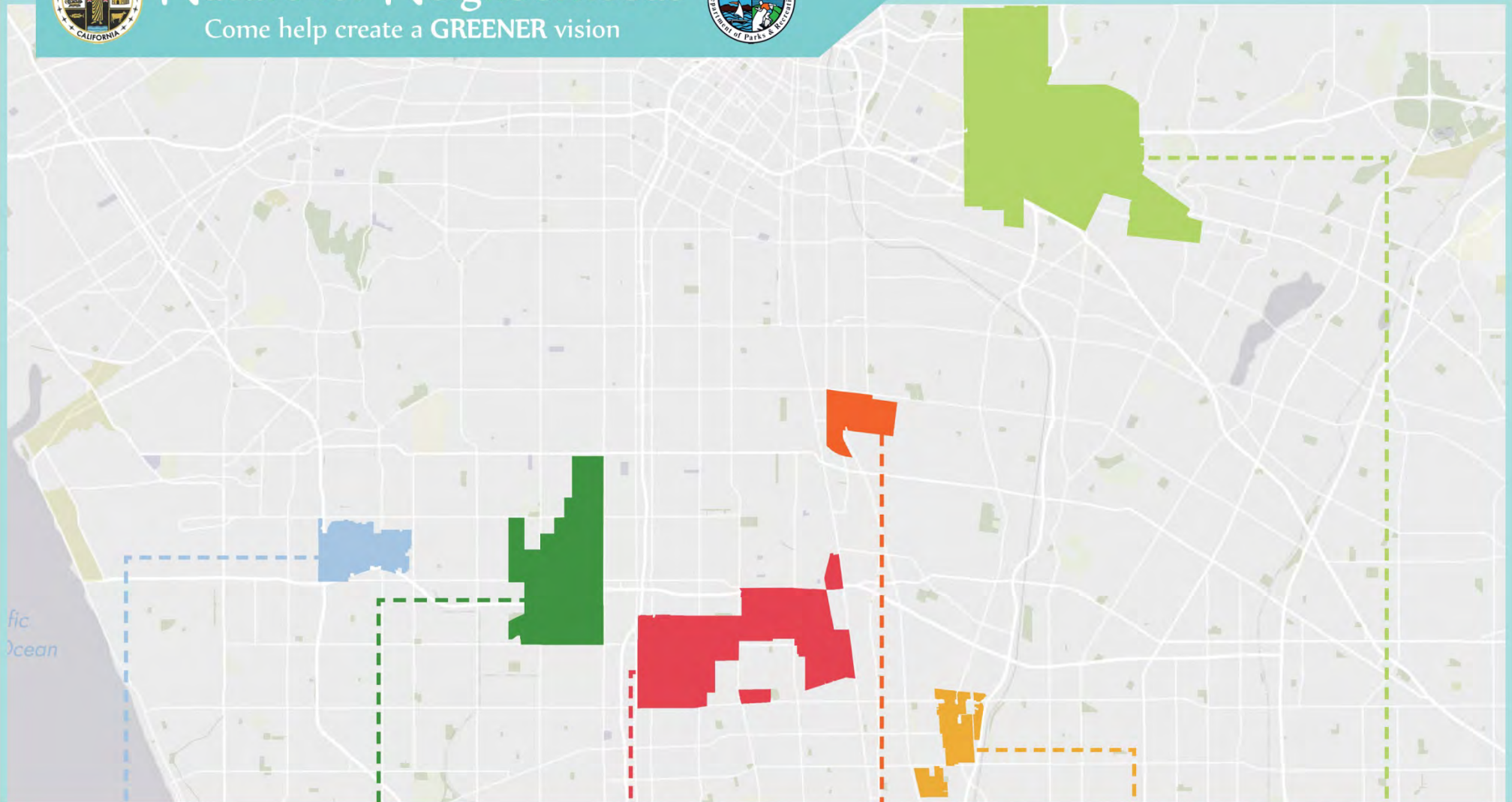


# Nature for Neighborhoods

Come help create a GREENER vision



## PLACEWORKS



## COMMUNITY PARKS AND RECREATION PLANS

LENNOX

WEST ATHENS  
- WESTMONT

WILLOWBROOK

WALNUT  
PARK

EAST RANCHO  
DOMINGUEZ

EAST LOS  
ANGELES

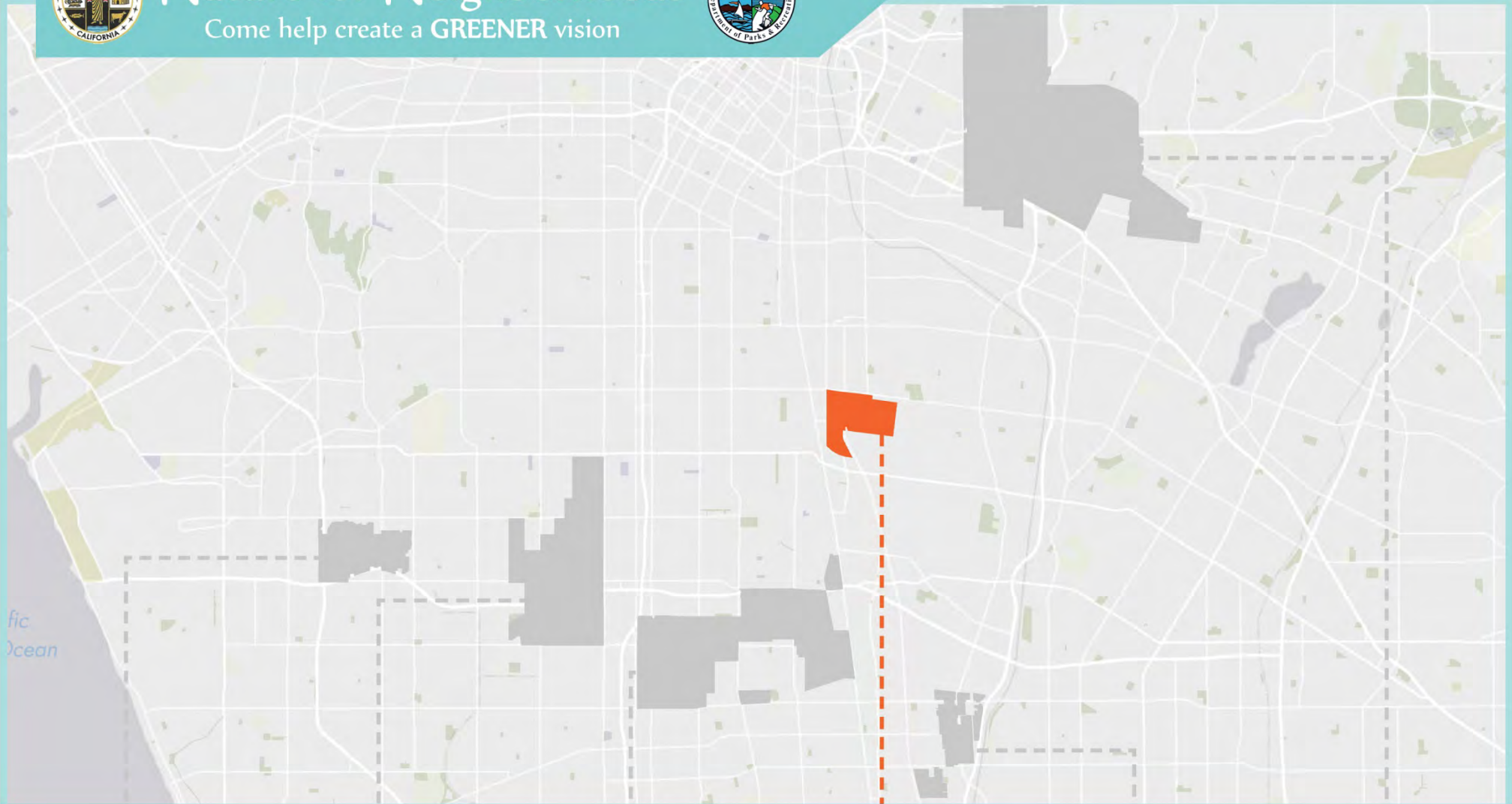


# Nature for Neighborhoods

Come help create a GREENER vision



# PLACEWORKS



## WALNUT PARK COMMUNITY DESIGN WORKSHOP

LENNOX

WEST ATHENS  
- WESTMONT

WILLOWBROOK

**WALNUT  
PARK**

EAST RANCHO  
DOMINGUEZ

EAST LOS  
ANGELES

# TONIGHT'S MEETING

## TALLER DE ESTA NOCHE

1. About Walnut Park  
*Sobre Walnut Park*
  - Existing Conditions  
*Condiciones Existentes*
  - Park Needs  
*Necesidades del parque*
  - What we've heard from the Community  
*Lo que escuchamos de la comunidad*
2. Health and Safety  
*Salud y Seguridad*
3. Vision and Strategies  
*Visión y Estrategias*
4. Potential Projects  
*Proyectos potenciales*
  - Site Conditions  
*Las condiciones del sitio*
  - Opportunities and Limitations  
*Oportunidades y Limitaciones*
5. Park Features  
*Amenidades del Parque*
6. Site Design Activity  
*Ejercicio de Diseño del Sitio*

# ABOUT WALNUT PARK

## *SOBRE WALNUT PARK*

Walnut Park Population: 15,966

*Población de Walnut Park: 15,966*

Los Angeles County Standard: 4 acres / 1,000 people

*Norma del Condado de Los Angeles: 4 acres / 1,000 people*

- Total amount of open space needed in Walnut Park: 64 acres

*Cantidad total de espacio libre necesario en Walnut Park: 64 acres*

Existing Park Acres: 4.5 (0.3 acres/ 1,000 people)

*Acres de Parques Existentes: 4.5 (0.3 acres/ 1000 personas)*

# WHERE ARE THE PARKS and WHO DO THEY SERVE? ¿DÓNDE ESTÁN LOS PARQUES Y A QUIÉN SIRVEN?

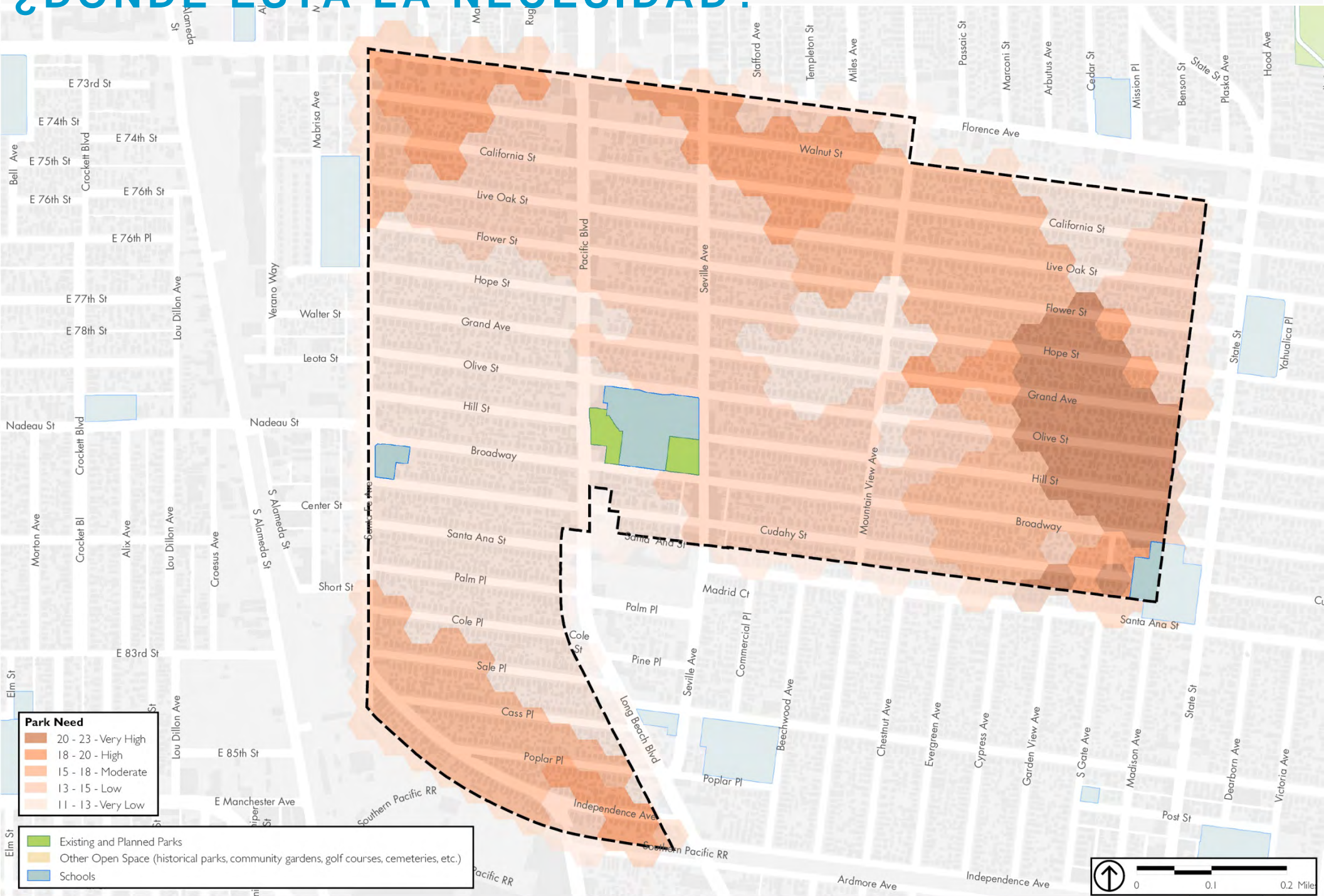


**Park Access**  
Areas Not Within 1/2 Mile of a Local Park  
1/2 Mile Service Radius from Local Parks

**Parklands**  
Parks Included in Analysis (includes parks within 1/2 mile of Community boundary)

# WHERE IS THE NEED?

## ¿DÓNDE ESTÁ LA NECESIDAD?



# WHAT IS IN OUR PARKS?

## ¿QUÉ HAY EN NUESTROS PARQUES?

	Size (Acres)	PARK AMENITIES							PLAY-GROUND			RECREATION AMENITIES							BUILDINGS/STRUCTURES							Security Lighting	Parking Spaces											
Walnut Nature Park	4.5 (combined with school)	Restrooms	Group Picnic Shelters	Picnic Tables	Barbecues	Splash Pads	Fitness Zone	Outdoor Stage	Vending Machines	Drinking Fountains	Art or Monument	Fishing Lake	2-5 year old	5-12 year old	2-12 year old	Soft Ball Fields	Multi-purpose Overlay Field	Soccer Fields	Football Field	Basketball Courts	Tennis Courts	Handball Courts	Skate Park	Walking Paths/Trails	Swimming Pool/Bath House	Community building	Senior Center	Offices	Gymnasium	Multi-purpose Room	Computer Lab	Library	Concession Stand	Commercial Kitchen	Sheriff's Office			
		2					1						1		1	1			4																			

# COMMUNITY OUTREACH

## AYUDA SOCIAL

■ 200 Community Surveys *Encuestas Comunitarias*

■ 8 Stakeholder Meetings *Reuniones*

- Walnut Park Florence Firestone Chamber of Commerce
- Walnut Park Residents' Association
- School Principal
- LA County Board of Supervisors

- Walnut Park Mutual Company
- LA County Department of Parks & Recreation
- Local Historian
- Non-profit Education

■ 3 Focus Groups *Grupos de Enfoque*

- Walnut Park Residents Association
- Walnut Park Chamber of Commerce
- First5/Best Start
- Communities for a Better Environment
- Organización de Líderes en Acción de Walnut Park (OLAWP)



■ 2 Community Workshops *Talleres comunitario*

■ 1 Youth Activity *Actividad para Jóvenes*

WHAT WE DID  
LO QUE HICIMOS  
WALNUT PARK



# KEY ISSUES

## PREOCUPACIONES IMPORTANTES

### ■ WALNUT NATURE PARK *PARQUE NATURAL DE NOGAL*

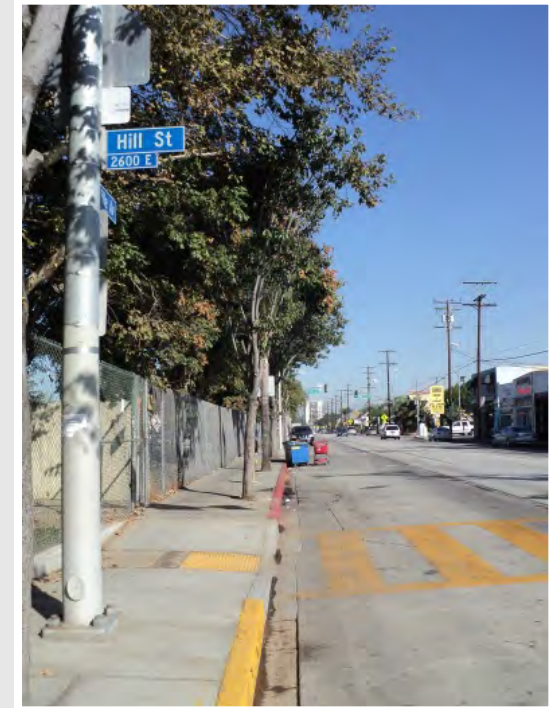
- Hours of operation are unclear and extremely limited *Las horas de operación no son claras y sumamente limitado*
- Playfield is undeveloped *Campo de juego no está desarrollado*

### ■ NEED FOR NEW PARKS AND OPEN SPACE

## NECESIDAD DE NUEVOS PARQUES Y

## ESPACIOS VERDES

- 30 minutes to walk to nearest green space *30 minutos para caminar a los espacios verdes más cercana*
- Need for social gathering spaces and playgrounds *Necesidad de espacios de reunión social y parques infantiles*



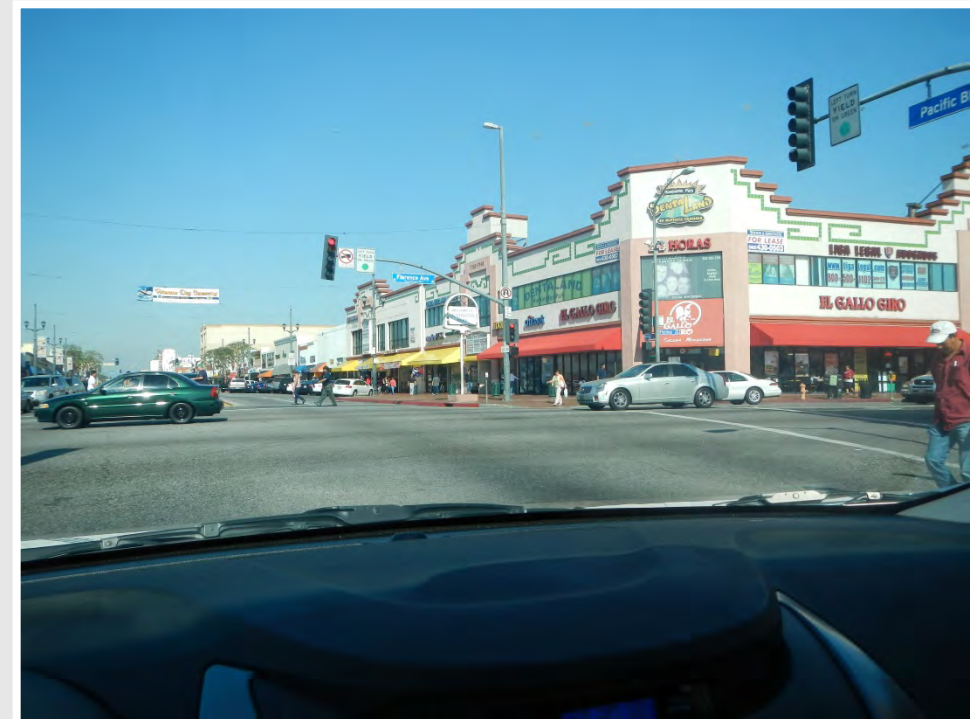
WHAT WE HEARD FROM YOU  
LO QUE ESCUCHAMOS DE USTEDES  
WALNUT PARK

# KEY ISSUES

## PREOCUPACIONES IMPORTANTES

### ■ UNSAFE STREETS AND ENVIRONMENTAL HEALTH CALLES INSEGURAS Y SALUD AMBIENTAL

- Illegal garage conversion and illegal car sales on vacant lots. *Conversión garaje ilegal y la venta de coches ilegales en terrenos baldíos.*
- Bad traffic conditions and poor pedestrian environment. *Las condiciones de tránsito inseguros y mal ambiente peatonal.*
- Speeding on weekends along Pacific Blvd. *El exceso de velocidad en Pacific Blvd.*
- Prostitution along Pacific Blvd. *La prostitución en Pacific Blvd.*
- Public health concern about industrial uses along Sante Fe Ave. *Problema de salud pública acerca de los usos industriales a lo largo de Sante Fe Ave.*



WHAT WE HEARD FROM YOU  
LO QUE ESCUCHAMOS DE USTEDES  
WALNUT PARK

# COMMUNITY SUGGESTIONS

## SUGERENCIAS DE LA COMUNIDAD

- Incorporate **lighting and security** into site design of new projects. *Incorporar la iluminación y la seguridad en el diseño de sitios de nuevos proyectos.*
- Improve **pedestrian conditions** by reducing traffic speed and introducing green along the streets. *Mejorar las condiciones de los peatones por la reducción de la velocidad del tráfico y la introducción de verde a lo largo de las calles.*
- Design spaces with **community use** and **family in mind**. *Diseñar espacios con uso de la comunidad y la familia en mente.*



WHAT WE HEARD FROM YOU  
LO QUE ESCUCHAMOS DE USTEDES  
WALNUT PARK

# COMMUNITY SUGGESTIONS

## SUGERENCIAS DE LA COMUNIDAD

- Create new spaces for **community gardening**. *Crear nuevos espacios para jardinería comunitaria.*
- Develop opportunities to **walk and bike** for exercise. *Desarrollar oportunidades para caminar y ciclar como ejercicio.*
- Integrate **exercise equipment** and other opportunities for fitness. *Integrar equipos de ejercicio y otras oportunidades para el ejercicio físico.*
- Make the green space **accessible** during the times that the community wants to use it. *Hacer el espacio verde accesible durante los tiempos en que la comunidad quiere usarlo.*

WHAT WE HEARD FROM YOU  
LO QUE ESCUCHAMOS DE USTEDES  
WALNUT PARK

# COMMUNITY SUGGESTIONS

## SUGERENCIAS JUVENILES

- Amenities for **social and leisure** activities (food stands, music, free wi-fi) *Servicios para las actividades sociales y de ocio (puestos de comida, música, internet wi -fi)*
- Alternative** types of **exercise** (rock climbing wall, parkour court, dog park) *Tipos alternativos de ejercicio (pared de escalada, pista de parkour, parque para perros)*
- Arts** programming (music, cooking, photography) *Programación de artes (música, la cocina, la fotografía)*
- Park amenities that could be used for **creative community activities** (murals, performance space, tables) *Servicios que podrían ser utilizados para actividades de la comunidad creativa (murales, espacio de actuación , mesas)*

PROGRAM	VOTES
Music	15
Cooking	15
Photography	14
Animal Rescue Club	12
Skateboarding	8
Gardening	6
Basketball	6
Archery	6
Art Lessons	5
Folklorico	4
Parkour	3

AMENITY/ DESIGN	VOTES
Wifi	28
Rock Climbing Wall	23
Food Stand	19
Performance Space	18
Water Park	18
Dog Park	15
Art Mural	13
Toddler Friendly	11
Nature	11
Parkour Court	11
Cultural Events	9
Basketball Courts	7
Skate Park	6
Running Tracks	6
Merry-Go-Round	5
Swimming pool	4
Playground	3
Walnut Trees	3

WHAT WE HEARD FROM YOU  
 LO QUE ESCUCHAMOS DE USTEDES  
 WALNUT PARK

# COMMUNITY IDENTIFIED SITES

## SITIOS DE LA COMUNIDAD IDENTIFICADOS



WHAT WE HEARD FROM YOU

LO QUE ESCUCHAMOS DE USTEDES

WALNUT PARK

# SUMMARY OF NEEDS

## RESUMEN DE LAS NECESIDADES

**MORE GREEN  
SPACE** *MÁS  
ESPACIOS  
VERDES*



**SPACES TO  
PLAY** *ESPACIOS  
PARA JUGAR*



**SPACES TO  
GATHER** *ESPACIOS PARA  
REUNIRSEN*



**SPACES TO  
EXERCISE** *ESPACIOS  
PARA EJERCER*



**SPACES FOR A  
SAFER AND  
HEALTHIER  
ENVIRONMENT** *ESPACIOS PARA  
UN SEGURO Y  
MEDIO  
AMBIENTE  
SALUDABLE*



**OPPORTUNITIES  
TO WALK** *OPORTUNIDADES  
PARA CAMINAR*



**GREEN  
STREETS** *CALLES VERDES*



**IMPROVE  
ENVIRONMENTAL  
HEALTH** *MEJORAR LA  
SALUD AMBIENTAL*

**GREENING  
THE CORE**  
*ENVERDECIENDO  
EL NÚCLEO*

**Streets and Small  
Spaces to Create an  
Open Space Network  
in Walnut Park**

*Calles y espacios  
pequeños que crean  
una systema de  
espacios abiertos en  
Walnut Park*



# STRATEGIES

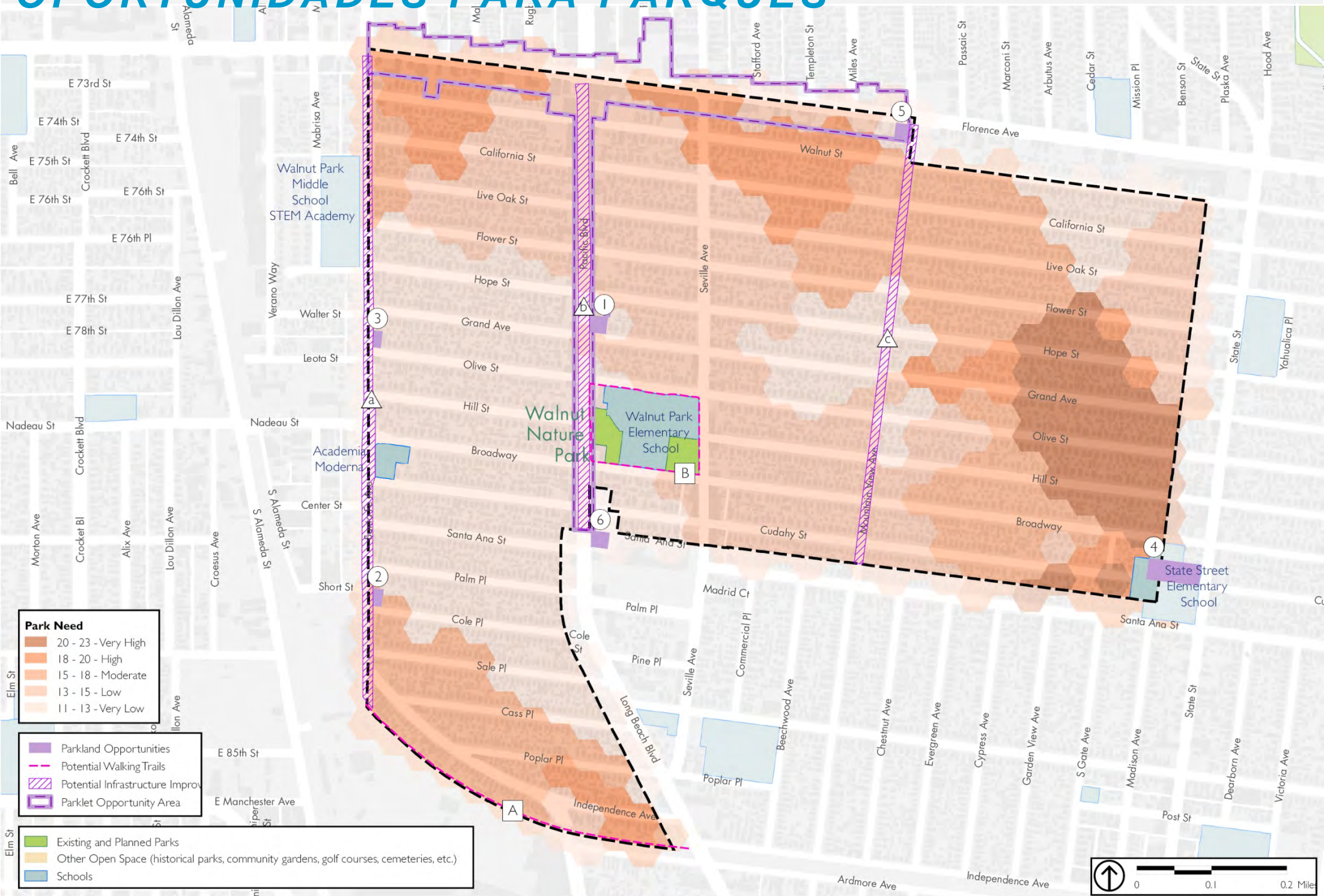
## ESTRATEGIAS

GREENING  
THE CORE  
ENVERDECIENDO  
EL NÚCLEO

- Acquire and green the **vacant and underutilized lots** strategically throughout the community. *Adquirir y hacer verde los terrenos baldíos y subutilizados estratégicamente en toda la comunidad.*
- **Improve existing resources** – make Walnut Nature Park a better community hub. *Mejorar los recursos existentes - hacer Walnut Parque Natural en un mejor centro comunitario .*
- Provide resources for **exercise and fitness**. *Proveer recursos para el ejercicio y la salud.*
- Provide **green buffer at western edge** to address environmental hazards. *Proveer una zona verde en el borde occidental para abordar los riesgos ambientales.*
- Create **greenways** and mini spaces along **wide roadways**. *Crear vías verdes y mini espacios alado de las carreteras anchas.*
  - Pacific Blvd
  - Santa Fe Ave
  - Mountain View Ave

# PARKLAND OPPORTUNITIES

## OPORTUNIDADES PARA PARQUES



# VISIONING OPPORTUNITIES

## OPORTUNIDADES PARA LA VISIÓN

**SIDEWALK TRAIL  
CONNECTING  
WALNUT NATURE  
PARK AND  
YWCA**

**CAMINO ACERA  
CONEXIÓN NUEZ  
PARQUE  
NATURAL Y  
YWCA**

**CONCEPTUAL  
POCKET PARKS  
PARQUES DE  
"BOLSILLO"  
CONCEPTUALES**

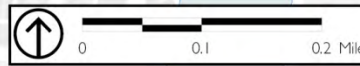
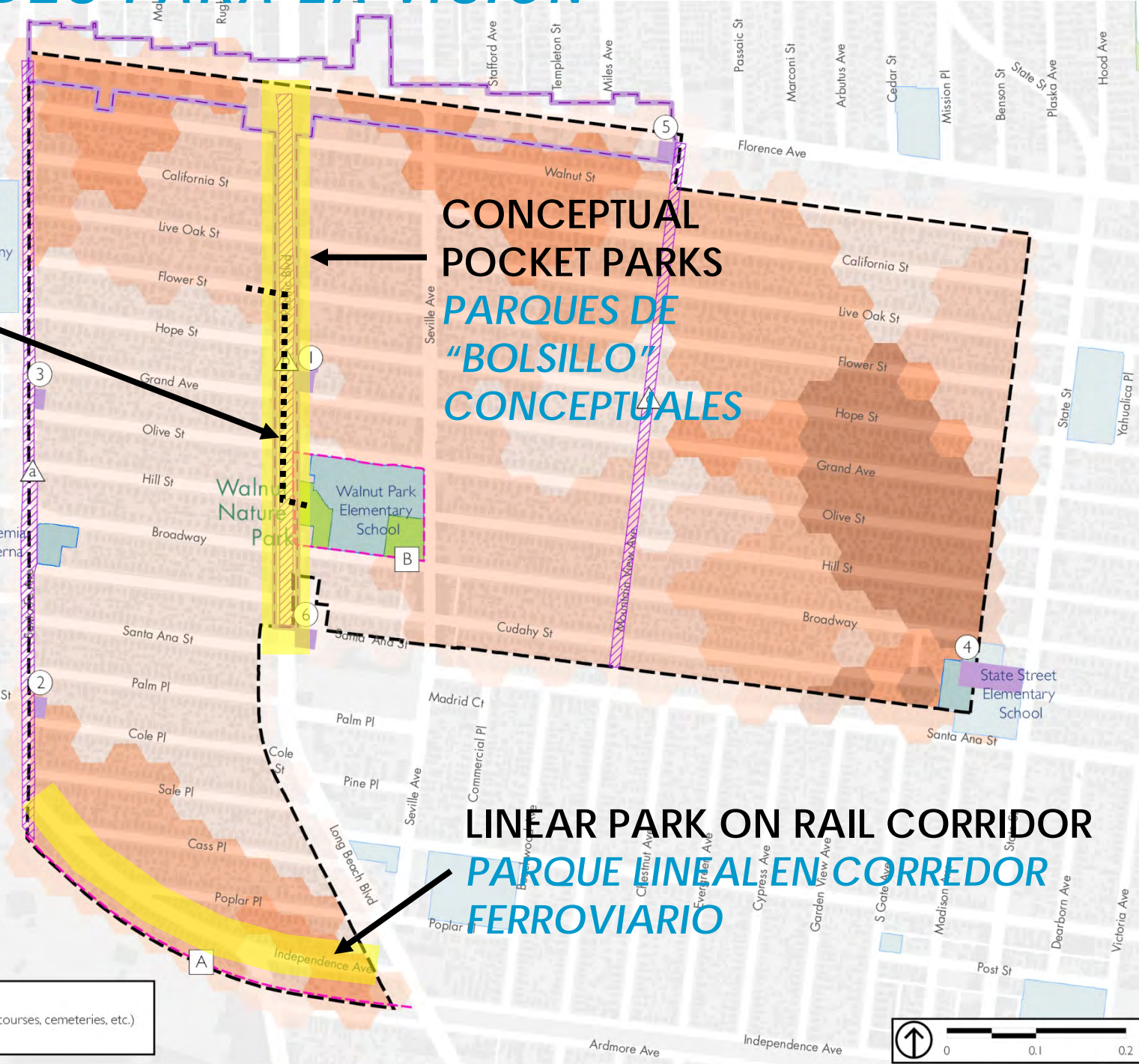
**LINEAR PARK ON RAIL CORRIDOR  
PARQUE LINEAL EN CORREDOR  
FERROVIARIO**

**Park Need**

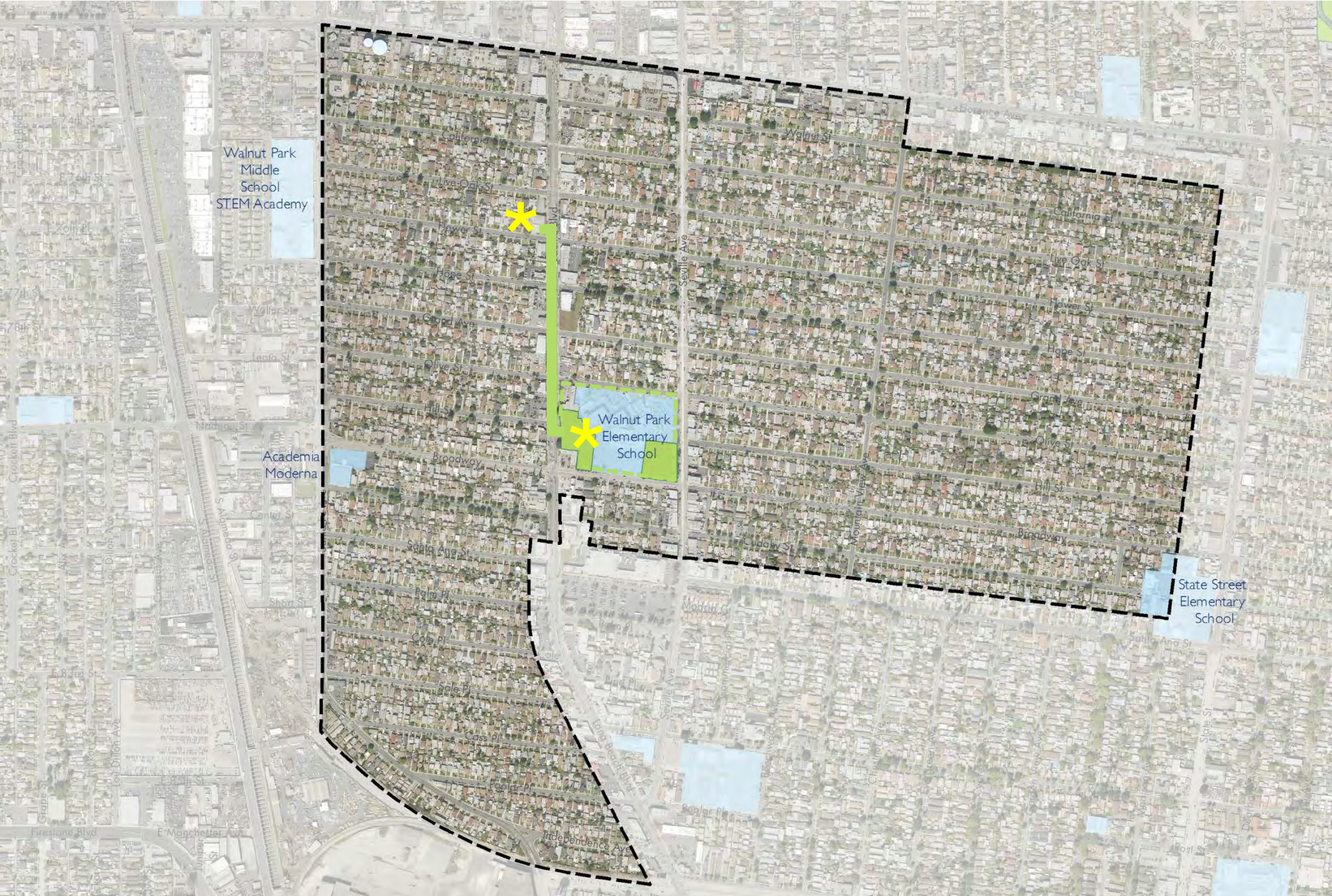
Dark Orange	20 - 23 - Very High
Orange	18 - 20 - High
Light Orange	15 - 18 - Moderate
Very Light Orange	13 - 15 - Low
White	11 - 13 - Very Low

Green	Existing and Planned Parks
Yellow	Other Open Space (historical parks, community gardens, golf courses, cemeteries, etc.)
Blue	Schools

Red dashed line	Parkland Opportunities
Black dashed line	Potential Walking Trails
Blue hatched area	Potential Infrastructure Improvements
Red hatched area	Parklet Opportunity Area



# SIDEWALK TRAIL CAMINO ACERA

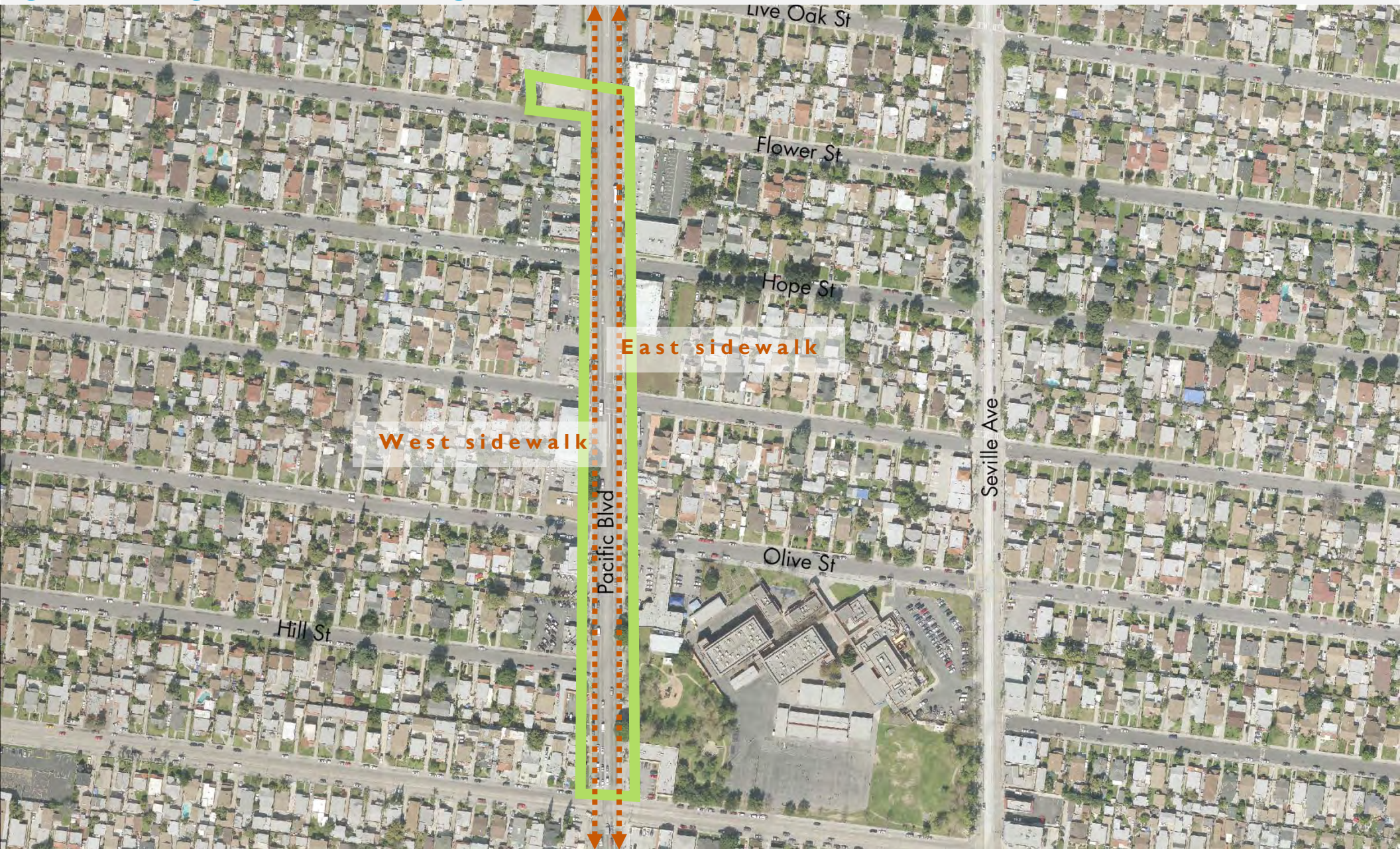


Walnut Park  
Middle  
School  
STEM Academy

Walnut Park  
Elementary  
School

State Street  
Elementary  
School

# SIDEWALK TRAIL *CAMINO EN LA ACERA*



## CONTEXT AND CONNECTIONS *CONTEXTO Y CONEXIONES*

# SIDEWALK TRAIL

## *CAMINO en la ACERA*



# SITE CONDITIONS

## *CONDICIONES DEL SITIO*

# SIDEWALK TRAIL

*CAMINO en la ACERA*



**MOSTLY EXISTING PALMS  
ALONG THIS SEGMENT**



**TRAIL SPACE**



**SITE CONDITIONS**  
*CONDICIONES DEL SITIO*

# SIDEWALK TRAIL *CAMINO ACERA*

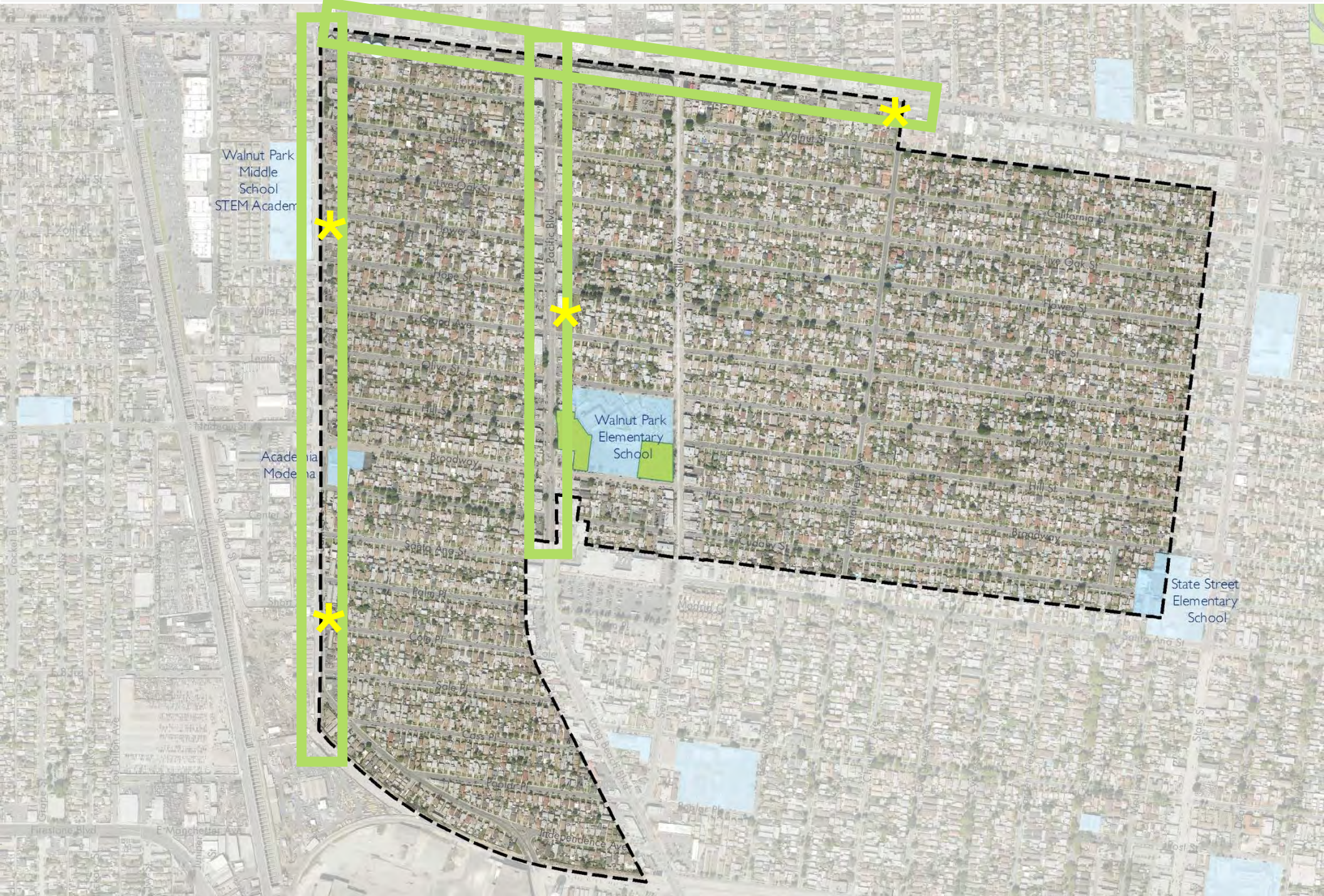


POTENTIAL AMENITIES  
*COMODIDADES POSIBLES*



# CONCEPTUAL POCKET PARK

## PARQUE DE "BOLSILLO" CONCEPTUAL



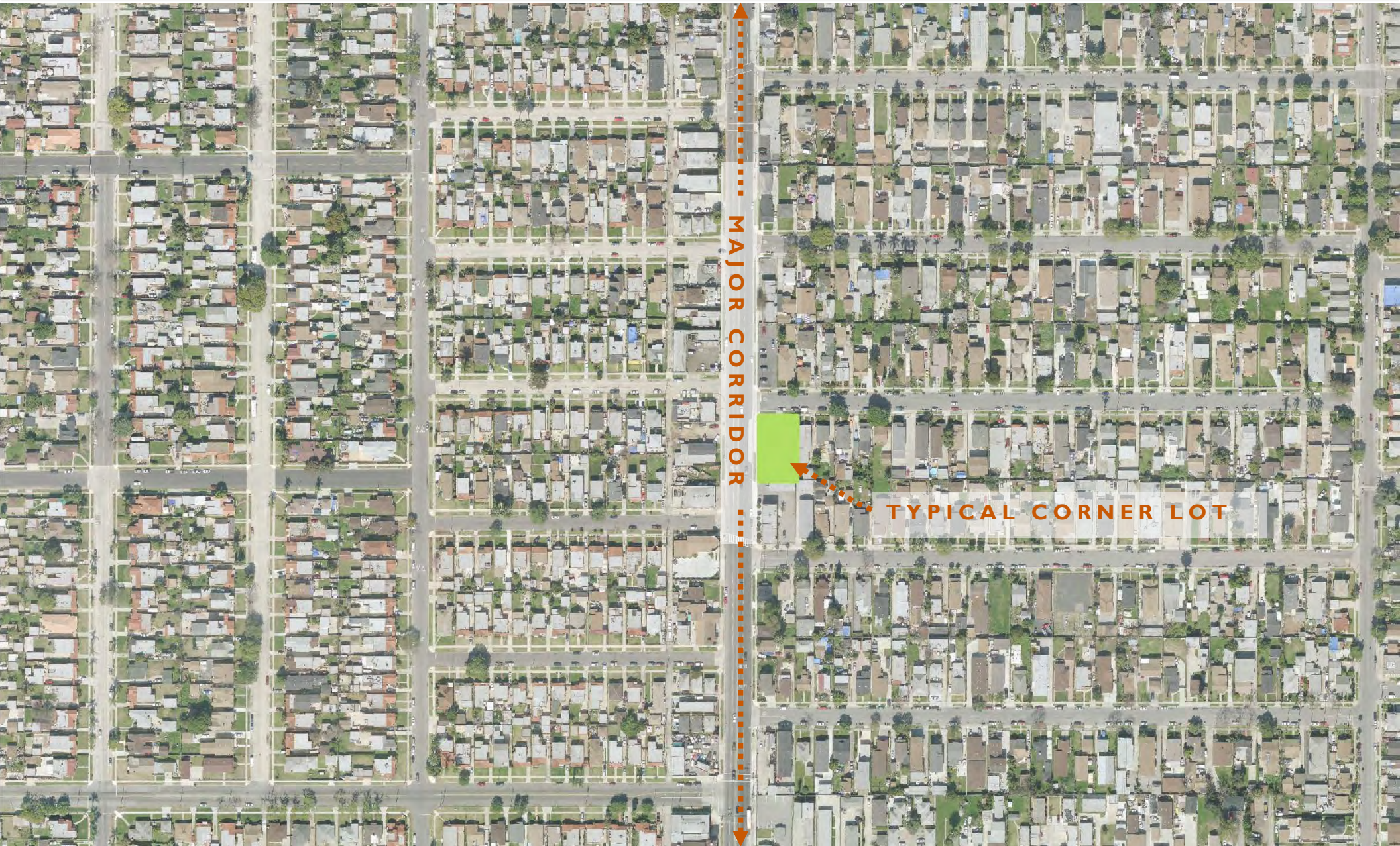
Walnut Park  
Middle  
School  
STEM Academ

Walnut Park  
Elementary  
School

State Street  
Elementary  
School

# CONCEPTUAL POCKET PARK

## PARQUE DE "BOLSILLO" CONCEPTUAL



# CONTEXT AND CONNECTIONS

## CONTEXTO Y CONEXIONES

# CONCEPTUAL POCKET PARK

## *PARQUE DE "BOLSILLO" CONCEPTUAL*



**SAMPLE SITE**  
for workshop.

What  
features  
would you  
want to see  
in any new  
park?

CONTEXT AND CONNECTIONS  
*CONTEXTO Y CONEXIONES*

# LINEAR PARK ON RAIL CORRIDOR

## PARQUE LINEAL EN CORREDOR FERROVIARIO



Walnut Park  
Middle  
School  
STEM Academy

Walnut Park  
Elementary  
School

State Street  
Elementary  
School

# LINEAR PARK ON RAIL CORRIDOR

## PARQUE LINEAL EN CORREDOR FERROVIARIO



# CONTEXT AND CONNECTIONS

## CONTEXTO Y CONEXIONES

# LINEAR PARK ON RAIL CORRIDOR

## PARQUE LINEAL EN CORREDOR FERROVIARIO



SITE CONDITIONS  
*CONDICIONES DEL SITIO*

# LINEAR PARK ON RAIL CORRIDOR

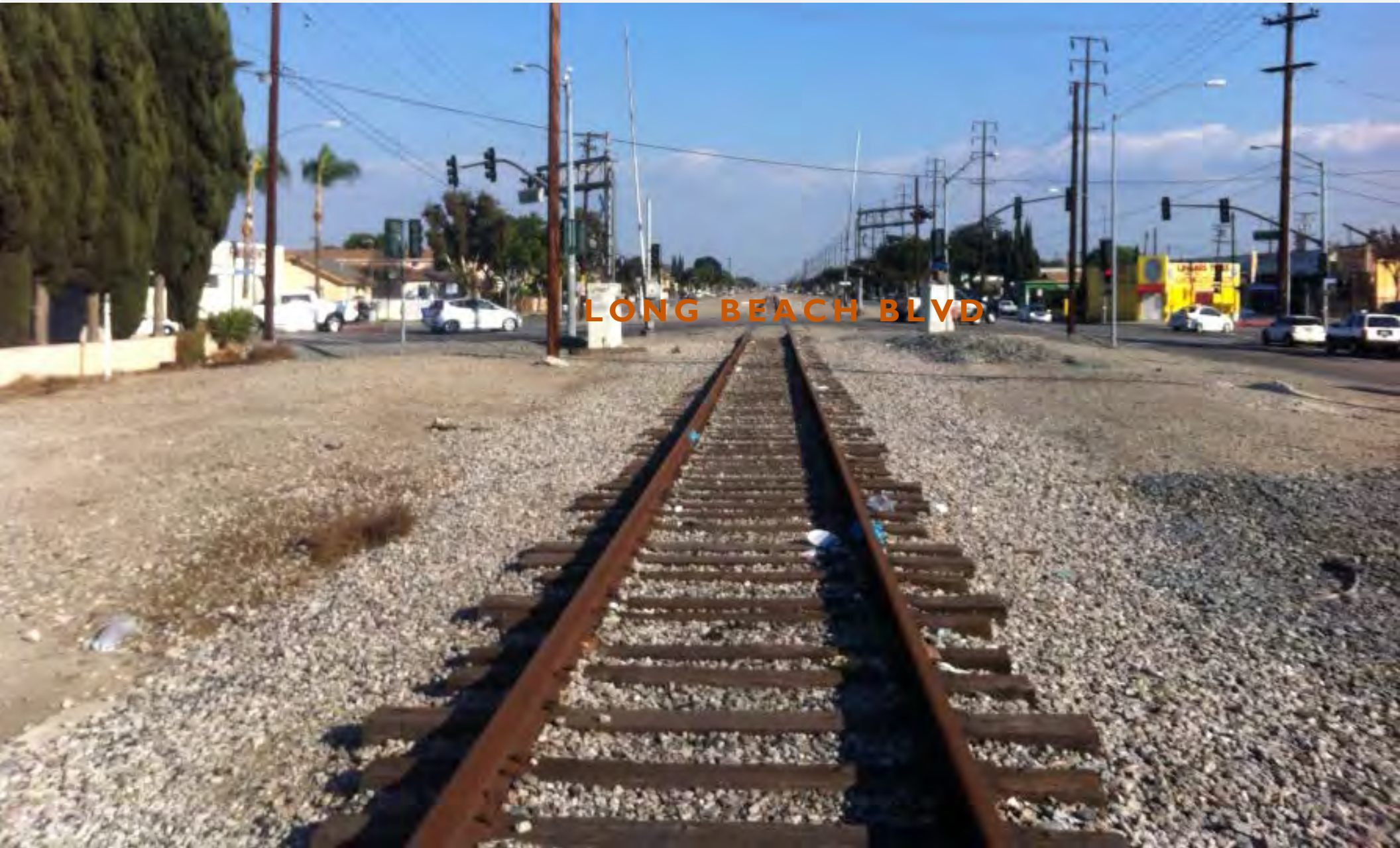
## *PARQUE LINEAL EN CORREDOR FERROVIARIO*



SITE CONDITIONS  
*CONDICIONES DEL SITIO*

# LINEAR PARK ON RAIL CORRIDOR

## *PARQUE LINEAL EN CORREDOR FERROVIARIO*



LONG BEACH BLVD

SITE CONDITIONS

*CONDICIONES DEL SITIO*

WALNUT PARK



# SITE DESIGN

## *SITIO DISEÑO*

## TOOLBOX OF PARK FEATURES

## *HERRAMIENTAS PARA EL DISEÑO DE LOS PARQUES*

WALNUT PARK COMMUNITY DESIGN WORKSHOP  
08.25.2014

### VISUAL INSPIRATION

Inspirational images for  
designing new open spaces.

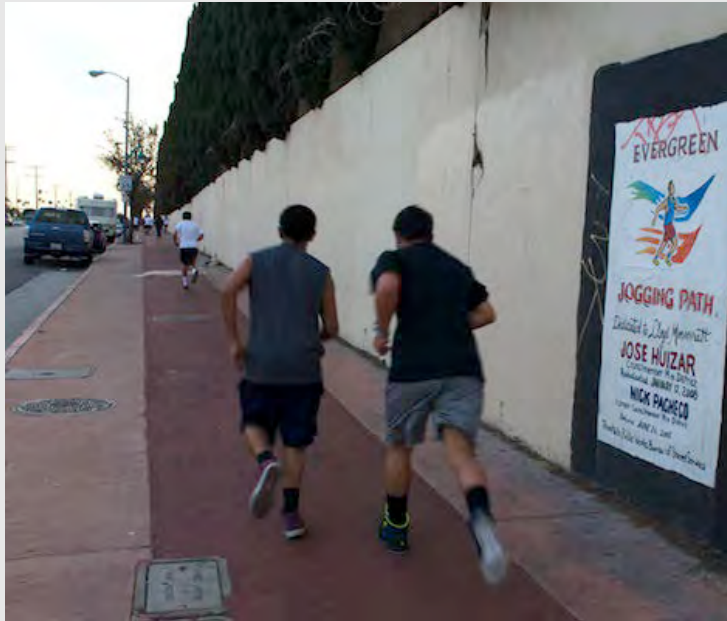


Nature for Neighborhoods  
Come help create a GREENER vision



# WALKING/RUNNING TRAIL

## SENDEROS PARA CAMINANDO Y CORRIENDO



Rubberized Surface



Concrete Path



DG path



Paved Path

### Considerations: *Consideraciones:*

- Surface material (one type, multiple types) *Materiales del piso (un tipo, tipo múltiple)*
- Modes (pedestrian, bike, skate board, horse) *Modos de transportación (a pie, en bicicleta, en patineta, el caballo)*
- Stopping points/resting place *Lugares para parar o descansar*

# CROSSWALKS

## PASEOS DE PEATONES



Curb extension



Crossing Refuge



Rapid Flashing Beacons



Pedestrian Hybrid Beacon

### Considerations:

### Consideraciones:

- Where are they most important?  
*¿Dónde están más importante?*

# EXERCISE *EJERCICIO*



Fitness Equipment



Stationary Bicycles



Exercise Nodes

## Considerations: *Consideraciones:*

- Surface material *Materiales del piso*
- Signage *Signos*
- Types of exercise *Tipos de ejercicio*
- Where would they be most used? *¿A dónde serían más utilizados?*

# SPORTS

## DEPORTES



Futsal



Ping Pong



Basketball



Tennis

### Considerations:

### Consideraciones:

- Size *Tamaño*
- Sports preference  
*Deportes preferidos*
- Surface material  
*Materiales del piso*

# PLAY

## LUGARES PARA JUGAR



### Considerations: *Consideraciones:*

- Surface material  
*Materiales del piso*
- Play elements  
*Elementos de juegos*
- Age groups  
*Grupos de edad*
- Accessibility  
*Accesibilidad*
- Feature colors  
*Colores*
- Water features  
*Características de agua*

# SPECIAL USES

## USOS ESPECIALES



Skateboard or BMX Park



Community Garden



Performance Space

## Considerations:

### Consideraciones:

- Are there any amenities missing in neighborhood?  
*¿Hay servicios que faltan en la comunidad?*

# GATHERING

## REUNIÓN



The Plaza at Harvard  
Stoss Landscape Urbansism

Playful Shape



Metal



Shading



Cooking



Wood

## Considerations:

### Consideraciones:

- Types of seating  
*Tipos de sillas*
- Types of tables  
*Tipos de mesas*
- Ability to cook  
*Herramientas para cocinar*
- Site furniture needs (bike racks, trash and recycling, dogi-pots)  
*Otros muebles necesarios*
- Shade needs  
*Sombras necesarias*



# KIOSKS AND SIGNAGE

## QUIOSCOS Y CARTELES



### Considerations:

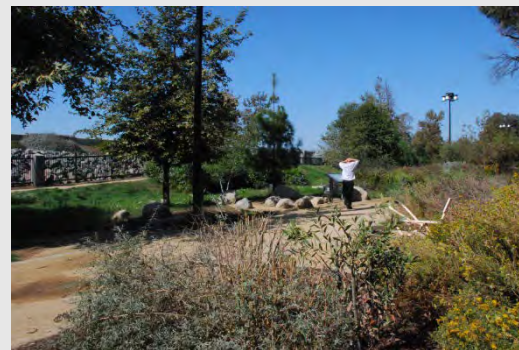
### *Consideraciones:*

- Trailhead needs *Necesidades para el fuente de la senda*
- Informational needs *Necesidades de información*
- Is the community allowed to post? *¿Puedo poner información miembros de la comunidad?*

# TREES AND PLANTING

## ARBOLES Y PLANTAS

### Tree Types



Naturalistic Planting

Formal Planting

Native

### Considerations:

#### Consideraciones:

- Evergreen or deciduous  
*Tipos de arboles*
- Large trees or small ones  
*Grandes o pequeños*
- Flowers *Flores*
- Grass *Césped*

# ART

## ARTE



Fitness Theme



Community Theme



© Rafael Rivera 2013

Interactive Piece

## Considerations:

### Consideraciones:

- Themes of the piece *Temas del sitio*
- Medium (mural, sculpture, etc.) *Medio (mural, escultura, etc.)*

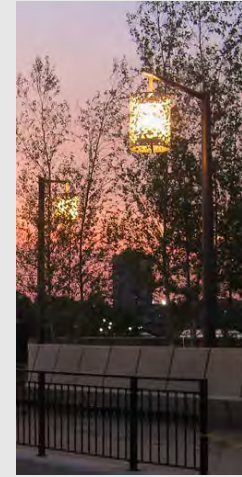
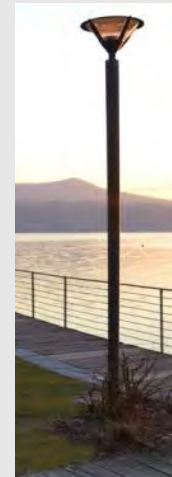
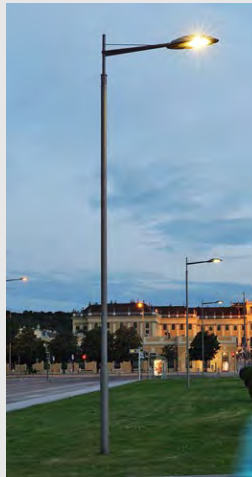
# SAFETY

## SEGURIDAD

### Fence



### Lighting



### Considerations:

#### Consideraciones:

- Access Points  
*Puntos de acceso*
- Style of lighting  
*Estilo de luces*
- Security cameras  
*Cameras de seguridad*
- Visibility *Visibilidad*
- Lines of sight and good observation points for law enforcement  
*Vista y observación para la policía*

# SITE DESIGN ACTIVITY

## *EJERCICIO DE DISEÑO DEL SITIO*



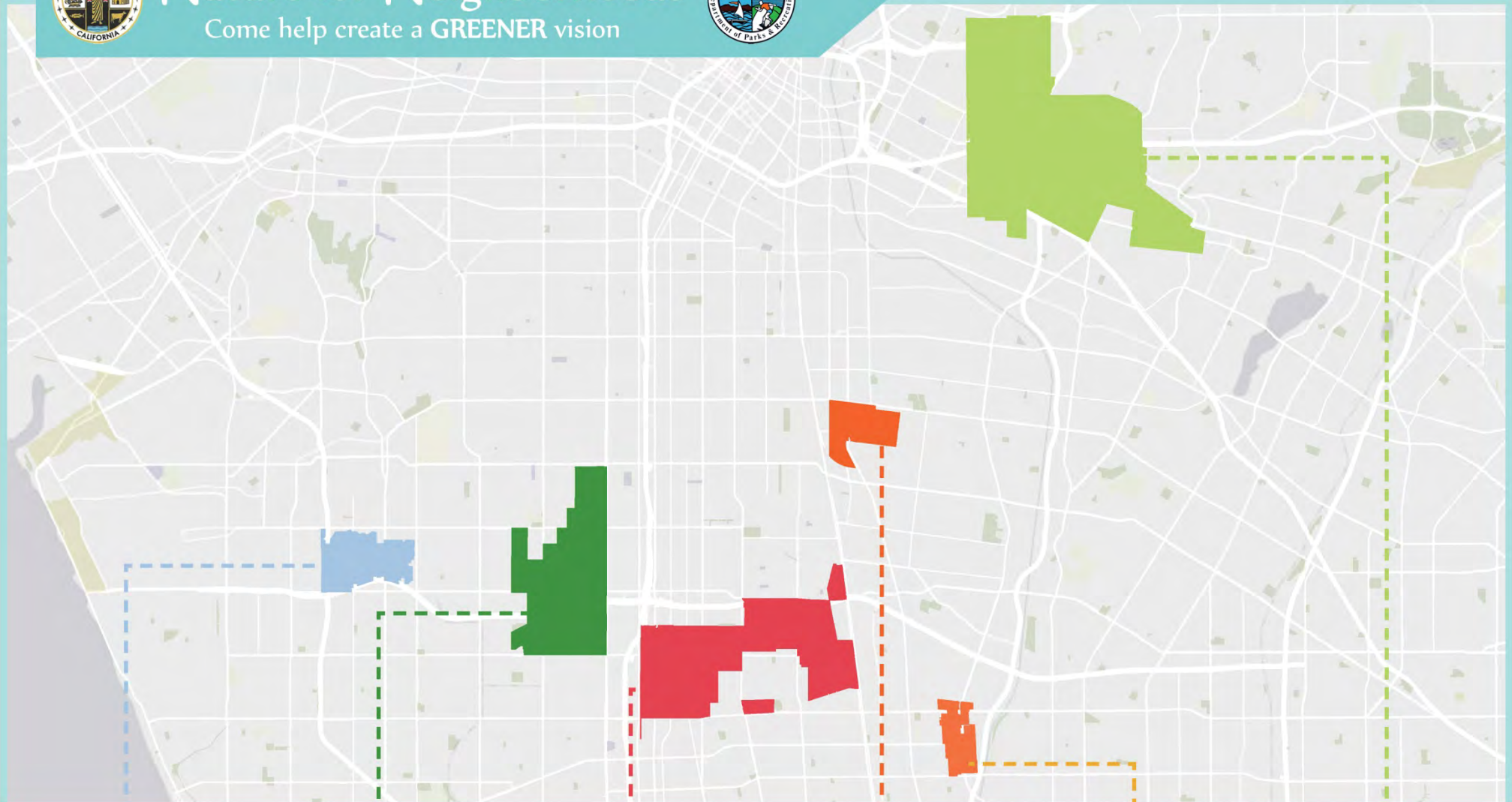


# Nature for Neighborhoods

Come help create a GREENER vision



PLACEWORKS



## COMMUNITY PARKS AND RECREATION PLANS

LENNOX

WESTMONT-  
WEST ATHENS

WILLOWBROOK

WALNUT  
PARK

EAST RANCHO  
DOMINGUEZ

EAST LOS  
ANGELES